



Fisheries and Oceans  
Canada

Pêches et Océans  
Canada

Canadian  
Coast Guard

Garde côtière  
canadienne

# NOTICES TO MARINERS PUBLICATION WESTERN EDITION

MONTHLY EDITION N°02  
February 22, 2019



Safety First, Service Always

Published Monthly by the  
**CANADIAN COAST GUARD**  
[www.notmar.gc.ca/subscribe](http://www.notmar.gc.ca/subscribe)

## CONTENTS

	Page
Section 1	General and Safety Information..... 1 - 4
Section 2	Chart Corrections..... 5 - 10
Section 3	Radio Aids to Marine Navigation Corrections ..... N/A
Section 4	Sailing Directions and Small Craft Guide Corrections..... 12 - 14
Section 5	List of Lights, Buoys and Fog Signals Corrections..... 15

Notices to Mariners Publication  
Western Edition  
Monthly Edition N°02/2019

**Published under the authority of:**  
Canadian Coast Guard Programs  
Aids to Navigation and Waterways  
Fisheries and Oceans Canada  
Montreal, Quebec  
H2Y 2E7

© Her Majesty the Queen in Right of Canada, 2019  
DFO/2019-2026  
Fs152-6E-PDF  
ISSN 1719-7708

Available on the Notices to Mariners website:  
[www.notmar.gc.ca](http://www.notmar.gc.ca)

Disponible en français :  
Publication des Avis aux navigateurs  
Édition de l'Ouest  
Édition mensuelle N°02/2019

## EXPLANATORY NOTES

**Geographical positions** refer directly to the graduations of the largest scale Canadian Hydrographic chart unless otherwise indicated.

**Bearings** refer to the true compass and are measured clockwise from 000° (North) clockwise to 359°; those relating to lights are from seaward.

**Visibility** of lights is that in clear weather.

**Depths** - The units used for soundings (metres, fathoms or feet) are stated in the title of each chart.

**Elevations** are normally given above Higher High Water, Large Tide unless otherwise indicated.

**Distances** may be calculated as follows:

1 nautical mile = 1,852 metres (6,076.1 feet)

1 statute mile = 1,609.3 metres (5,280 feet)

1 metre = 3.28 feet

**Temporary & Preliminary Notices** are indicated by a (T) or a (P) in Section 1, respectively. Please note that Nautical charts are not amended by the Canadian Hydrographic Service for Temporary (T) and Preliminary (P) Notices. It is recommended that mariners chart these corrections in pencil. The list of charts affected by Temporary and Preliminary Notices are revised and promulgated quarterly in Section 1 of the Monthly Edition.

**Please note that, in addition to the temporary and preliminary changes normally advertised as (T) and (P) Notices, there are a few permanent changes to aids to navigation that have been advertised as Preliminary Notices to Mariners while charts are being updated for new editions.**

### Marine Information Report & Suggestion Sheet

Mariners are requested to notify the responsible authorities when new or suspected dangers to navigation are discovered, changes observed in aids to navigation or corrections to publications are seen to be necessary. Such communications can be made using the *Marine Information Report & Suggestion Sheet* inserted on the last page of each monthly edition of *Notices to Mariners*.

### Canadian Hydrographic Service – Information Published in Section 2 of *Notices to Mariners*

Mariners are advised that only the most critical changes that directly affect safety to navigation are issued in Section 2 – Chart Corrections. This limitation is required to ensure that charts remain as clear and easy to read as possible. As a result, mariners may see minor discrepancies of a non-critical nature between information in official publications. For example, a small change in the nominal range or focal height of a light may not result in the production of a chart correction in *Notices to Mariners*, but may result in a correction in the *List of Lights, Buoys and Fog Signals* publication.

**In case of discrepancy between information provided on CHS charts relating to aids to navigation, and the *List of Lights, Buoys and Fog Signals* publication, the latter shall be deemed as containing the most up-to-date information.**

### Canadian Nautical Charts & Publications

A source list of Canadian nautical charts and publications is published in Notice No. 14 of the *Notices to Mariners Annual Edition 2018*. The source supply and the prices effective at the time of printing are listed. For current chart edition dates, please refer to the following website: [www.chs-shc.gc.ca/charts-cartes/paper-papier/index-eng.asp](http://www.chs-shc.gc.ca/charts-cartes/paper-papier/index-eng.asp)

## CHART CORRECTIONS – SECTION 2

Corrections to nautical charts will be listed in numerical order by chart number. Each chart correction listed applies only to that particular chart. Related charts, if any, will have their own specific correction listed separately.

Users should also refer to CHS *Chart 1: Symbols, Abbreviations and Terms* for additional information pertaining to the correction of charts.

The illustration below describes the elements that will comprise a typical Section 2 chart correction:

	Chart Number	Chart Title	Charts latest new edition date	Horizontal Chart Datum	Last Correction
Weekly chart correction date	1202	Cap Eternité à/to Saint-Fulgence – New Edition – 20-MAY-94 – NAD 1927			
	6-Aug-1999				LNM/D 23-Jul-1999
	Add	light Fl G		48°26'36.4"N 70°53'08.6"W	
		(See Chart No 1 P24)		(F2007-107) LL (700) DFO(6829264-01)	
	Chart action	Chart No 1 reference no.	CCG reference no.	List of light no.	CHS reference no.

The last correction number is identified with the **LNM/D** or Last Notice to **Mariners** Number / Date.

## NOTICES TO MARINERS WEBSITE – MONTHLY EDITIONS, CHART CORRECTIONS, AND CHART PATCHES

The Notices to Mariners website allows users to access the [monthly publications](#), [chart corrections](#), and [chart patches](#).

Users can subscribe for free to the [email notification service](#) to receive notifications when charts of interest are updated, including their patches, as well as when a new monthly edition becomes available online.

## ADVISORY NAVIGATIONAL WARNINGS / NOTICES TO SHIPPING

The Canadian Coast Guard is implementing a number of changes to the aids to navigation system in Canada.

These changes are advertised as Navigational Warnings, formerly called Notices to Shipping<sup>1</sup>, that are broadcast by the Canadian Coast Guard, and are then followed up with Notices to Mariners, then charts are updated by hand correction, reprints or new editions.

Mariners are advised that all relevant Navigational Warnings (NAVWARNs) should be kept until superseded by Notices to Mariners or through revised charts issued by the Canadian Hydrographic Service (CHS).

Navigational Warnings are accessible on the applicable regional page on the Canadian Coast Guard e-Navigation Maritime Information Portal at <http://www.marinfo.gc.ca/e-nav>.

The Canadian Hydrographic Service is reviewing the impact of these changes with the Canadian Coast Guard and together are preparing an action plan on the issuing of chart revisions.

For further information, contact your regional Navigational Warning (NAVWARN) Issuing Desk.

### Western Region

#### **Prince Rupert MCTS Centre**

Canadian Coast Guard  
Bag 4444  
Prince Rupert, BC V8J 4K2

Telephone: (250) 627-3070

Email: [NAVWARN.MCTSPRinceRupert@innav.gc.ca](mailto:NAVWARN.MCTSPRinceRupert@innav.gc.ca)

Website: <http://www.marinfo.gc.ca/e-nav>

### Central & Arctic Region

#### **\* Iqaluit MCTS Centre**

*Operational from approximately mid-May until late December.*

Canadian Coast Guard  
P.O. Box 189  
Iqaluit, NU X0A 0H0

#### "A" Series

Telephone: (867) 979-5269

#### "H" Series

Telephone: (867) 979-0310

Facsimile: (867) 979-4264

Email: [NAVWARN.MCTSIqaluit@innav.gc.ca](mailto:NAVWARN.MCTSIqaluit@innav.gc.ca)

Website: <http://www.marinfo.gc.ca/e-nav>

\* Service available in English and French.

---

<sup>1</sup> The expression "Notice to Shipping" was changed to "Navigational Warning" in January 2019.

---



---

**INDEX**

---

**SECTION 1 – GENERAL AND SAFETY INFORMATION** **1**

---

Canadian Hydrographic Service – Announcement Regarding CHS Chart Patches .....	1	
Canadian Hydrographic Service – Cumulative Chart Corrections .....	1	
Canadian Hydrographic Service – Current Chart Edition Dates .....	1	
Canadian Hydrographic Service – Print On Demand Charts - Care and Use .....	1	
Canadian Hydrographic Service, Transport Canada – Navigation Safety - ECDIS .....	2	
Notices to Mariners Website – Monthly Publication and Related Files to Download now Available in a Single ZIP File ....	2	
*201 Canadian Hydrographic Service – Nautical Charts .....	2	
*202 Canadian Hydrographic Service – Electronic Navigational Charts .....	2	
*203 Canadian Hydrographic Service – Raster Digital Charts (BSB V3) .....	3	
*205 Barkley Sound – Structure for a Daybeacon Rebuilt and Repositioned .....	3	
*206 Plans - Quatsino Sound – Front Range Rebuilt and Repositioned .....	3	
*209(P) Vancouver Fraser Port Authority – New Traffic Separation Scheme to be Implemented for Approaches to Vancouver Harbour .....	3	
*210 Winnipeg to/au Lake Winnipeg/Lac Winnipeg – Aids to Navigation Permanently Discontinued .....	4	
*211 Plans - Barkley Sound – Daybeacon Permanently Discontinued .....	4	

**SECTION 2 – CHART CORRECTIONS** **5**

---

**SECTION 3 – RADIO AIDS TO MARINE NAVIGATION CORRECTIONS** **N/A**

---

**SECTION 4 – SAILING DIRECTIONS AND SMALL CRAFT GUIDE CORRECTIONS** **12**

---

**SECTION 5 – LIST OF LIGHTS, BUOYS AND FOG SIGNALS CORRECTIONS** **15**

---

**NUMERICAL INDEX OF CANADIAN CHARTS AFFECTED**

<b>Chart No.</b>	<b>Page</b>	<b>Chart No.</b>	<b>Page</b>	<b>Chart No.</b>	<b>Page</b>
3001	5				
3311	6				
3410	6				
3463	3, 4, 6, 7				
3475	7				
3481	3, 4				
3489	7				
3512	7, 8				
3513	8				
3514	8, 9				
3526	9				
3548	9				
3646	4, 9				
3671	3				
3681	3				
3890	9				
3894	10				
3934	10				
3935	10				
3945	10				
3947	10				
6242	4				
6417	10				

#### **CANADIAN HYDROGRAPHIC SERVICE – ANNOUNCEMENT REGARDING CHS CHART PATCHES**

Colour Web Patches are free to the mariner, and given the quality of many printers, should reproduce well. They will be available in real time all around the world.

CHS welcomes your feedback on this service at [chsinfo@dfo-mpo.gc.ca](mailto:chsinfo@dfo-mpo.gc.ca)

#### **CANADIAN HYDROGRAPHIC SERVICE – CUMULATIVE CHART CORRECTIONS**

The cumulative chart corrections published in *Notices to Mariners* can now be accessed at <https://www.notmar.gc.ca/corrections-en.php>

#### **CANADIAN HYDROGRAPHIC SERVICE – CURRENT CHART EDITION DATES**

##### **CHART EDITIONS**

The three terms described below are used to indicate the publication status of Canadian charts.

##### **NEW CHART - "NEWCHT"**

The first publication of a Canadian chart embracing an area not previously charted to the scale shown, or embracing an area different from any existing Canadian chart.

##### **NEW EDITION - "NEWEDT"**

A new issue of an existing chart containing amendments essential to navigation in addition to those issued in *Notices to Mariners* and making existing editions obsolete.

##### **REPRINTS**

A new issue of the current edition of a chart incorporating no amendments of navigational significance other than those previously promulgated in *Notices to Mariners*. It may also contain amendments from other sources provided they are not essential to navigation. Previous printings of the current edition remain in force.

The current chart edition dates can be accessed at [www.chs-shc.gc.ca/charts-cartes/paper-papier/index-eng.asp](http://www.chs-shc.gc.ca/charts-cartes/paper-papier/index-eng.asp)

#### **CANADIAN HYDROGRAPHIC SERVICE – PRINT ON DEMAND CHARTS - CARE AND USE**

##### **Background**

By providing nautical charts to the public, the goal of the Canadian Hydrographic Service (CHS) is to provide services for safe navigation in a fiscally responsible manner. As a result, CHS continues to expand its portfolio of nautical paper charts that are printed using Print On Demand (POD) technology. These charts are easily recognized by their whiter paper and the coloured logo of the Canadian Hydrographic Service. This new technology enables CHS to print charts in a more efficient manner, while enhancing chart content through being able to quickly add new and important information. POD technology provides customers with up-to-date charts without the historical hand-drawn corrections or glued-on patches. Additionally, this technology eliminates out-of-stock situations which arise with the traditional printing and warehousing methods. In the event of a national emergency, CHS can respond to the appropriate authorities with the best available information very quickly.

##### **Care of Your POD Chart**

CHS encourages its customers to handle the POD charts more carefully than the traditional lithographic charts. When plotting information on POD charts, use HB pencils and apply limited pressure. Testing has suggested that an Indian gum eraser is more effective than alternatives when used on the product. This eraser is also suitable for charts printed using lithographic processes.



**CANADIAN HYDROGRAPHIC SERVICE, TRANSPORT CANADA – NAVIGATION SAFETY - ECDIS**

Mariners are advised that ECDIS may not display some isolated shoal depths when operating in "base or standard display" mode. Route planning and monitoring alarms for these shoal depths may not always be activated. To ensure safe navigation and to confirm that a planned route is clear of such dangers, mariners should visually inspect the planned route and any deviations from it using ECDIS configured to display "all data". The automated voyage planning check function should not be solely relied upon.

**NOTICES TO MARINERS WEBSITE – MONTHLY PUBLICATION AND RELATED FILES TO DOWNLOAD NOW AVAILABLE IN A SINGLE ZIP FILE**

The Notices to Mariners website has now added a new functionality where the monthly publication and related files to download, such as chart patches and *Sailing Directions* diagrams, can be obtained all together through the download of a single ZIP file.

The NOTMAR team would appreciate any feedback concerning this new functionality by sending an email to [Notmar.XNCR@dfo-mpo.gc.ca](mailto:Notmar.XNCR@dfo-mpo.gc.ca).

**\*201 CANADIAN HYDROGRAPHIC SERVICE – NAUTICAL CHARTS**

CHARTS	MAIN TITLE	SCALE	PUBLISHED	CAT#	PRICE
<b>New Editions</b>					
CAT-3	Catalogue of Nautical Charts and Publications - Ontario/Manitoba Including the Great Lakes / Catalogue des Cartes et publications nautiques - Ontario/Manitoba Incluant les Grands Lacs		25-JAN-2019	N/A	0.00
CAT-4	Catalogue of Nautical Charts and Publications - Arctic / Catalogue des Cartes et publications nautiques - Arctique		25-JAN-2019	N/A	0.00

**\*202 CANADIAN HYDROGRAPHIC SERVICE – ELECTRONIC NAVIGATIONAL CHARTS**

S-57 ENC NUMBER	CHART TITLE
<b>WITHDRAWN PRODUCTS</b>	
CA576096	International Piers
CA576097	North Sydney
CA576098	Sydney River
CA576099	Sydney Wharves/Quais
CA576100	Sydport
CA576305	Channel Port Aux Basques
CA576420	St. Anthony Harbour

**\*203 CANADIAN HYDROGRAPHIC SERVICE – RASTER DIGITAL CHARTS (BSB V3)**

CHARTS	MAIN TITLE	SCALE	PUBLISHED
<b>New Editions</b>			
RM-1430	Lac Saint-Louis	1:25 000	23-NOV-2018
RM-2314	Port of Thunder Bay	1:20 000	02-NOV-2018
RM-3891	Skidegate Channel	1:40 000	26-OCT-2018
RM-4203	Halifax Harbour: Black Point to / à Point Pleasant	1:10 000	28-DEC-2018
RM-4920	Plans Baie des Chaleurs / Chaleur Bay - Côte sud / South Shore	1:20 000	14-DEC-2018
RM-5625	Schooner Harbour to/à Baker Lake	1:40 000	28-DEC-2018
RM-7150	Pangnirtung and Approaches/et les approches	1:40 000	02-NOV-2018
<b>Charts Permanently Withdrawn</b>			
RM-4437	Pictou Harbour		
RM-4443	East River of Pictou: Indian Cross Point to / à Trenton and New Glasgow		

**\*205 BARKLEY SOUND – STRUCTURE FOR A DAYBEACON REBUILT AND REPOSITIONED**

Reference Chart: 3671

The structure of the following daybeacon has been rebuilt and repositioned to the following coordinates:

Cia Rock port daybeacon (LL 5078.1): 48° 50' 16.9"N 125° 10' 57.6"W

(P2019-004)

**\*206 PLANS - QUATSINO SOUND – FRONT RANGE REBUILT AND REPOSITIONED**

Reference Chart: 3681

The following front range has been rebuilt and repositioned to the following coordinates:

Quatsino Narrows front range (LL 5006): 50° 32' 50.5"N 127° 33' 34.9"W

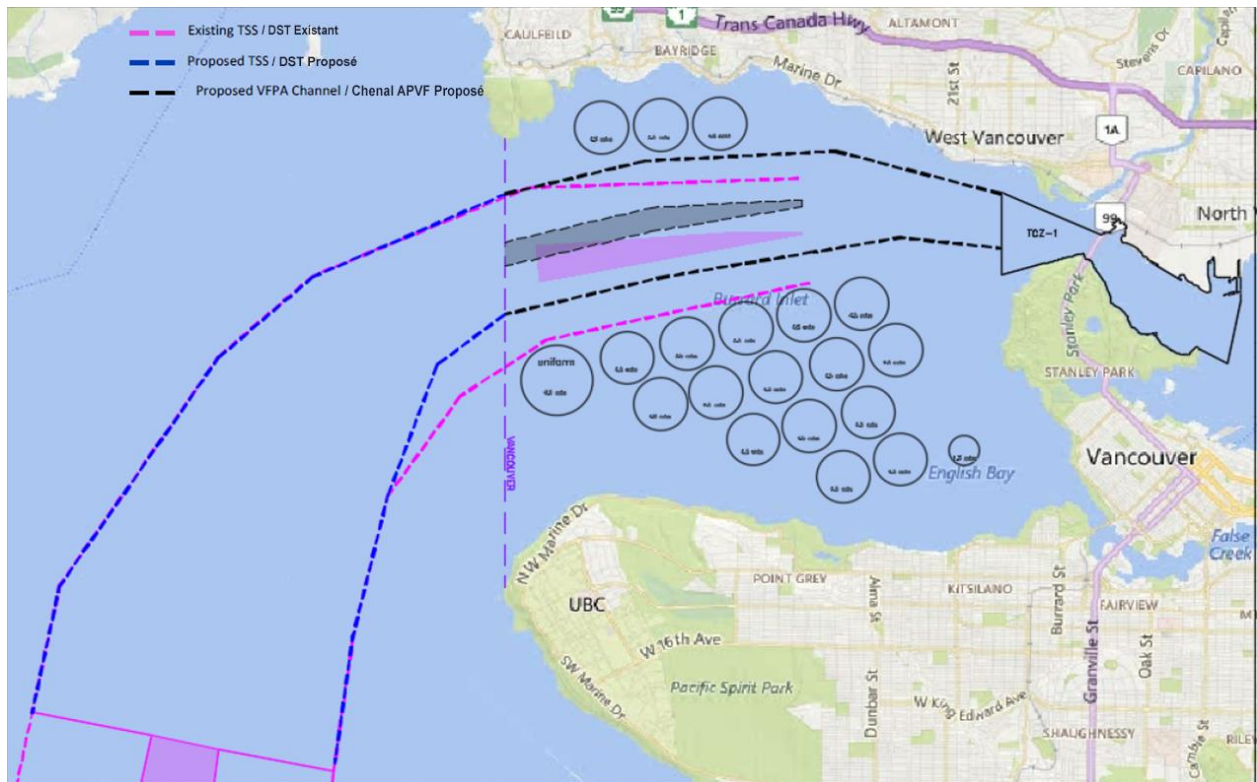
(P2018-142)

**\*209(P) VANCOUVER FRASER PORT AUTHORITY – NEW TRAFFIC SEPARATION SCHEME TO BE IMPLEMENTED FOR APPROACHES TO VANCOUVER HARBOUR**

Reference Charts: 3463 & 3481

Vancouver Fraser Port Authority (VFPA) is implementing a new traffic separation scheme (TSS) for the approaches to Vancouver Harbour, which will come into effect on May 1, 2019. These changes are primarily affecting charts Strait of Georgia, Southern Portion/Partie Sud (Chart 3463) and Approaches to/Approches à Vancouver Harbour (Chart 3481). For more details, please refer to the graphic below.

MONTHLY NOTICES TO MARINERS  
WESTERN EDITION 02/2019  
SECTION 1 – GENERAL AND SAFETY INFORMATION



- \*210 WINNIPEG TO/AU LAKE WINNIPEG/LAC WINNIPEG – AIDS TO NAVIGATION PERMANENTLY DISCONTINUED**  
Reference: Notice 417(P)/18 is cancelled (Chart 6242).  
(A2018-051, 053, 055, 056)
- \*211 PLANS - BARKLEY SOUND – DAYBEACON PERMANENTLY DISCONTINUED**  
Reference: Notice 611(P)/18 is cancelled (Chart 3646).  
(P2018-141)

MONTHLY NOTICES TO MARINERS  
WESTERN EDITION 02/2019  
SECTION 2 – CHART CORRECTIONS

---

**3001 - Vancouver Island / Île de Vancouver, Juan de Fuca Strait to/à Queen Charlotte Sound - New Edition - 23-FEB-2001**

**- NAD 1927**

15-FEB-2019

LNMD. 28-SEP-2018

Delete	depth of 1788 fathoms (See Chart No. 1, I10) This notice affects Electronic Navigational Chart: CA270389	50°07'24.9"N 129°35'59.0"W  <i>DFO(6203950-01)</i>
Add	depth of 859 fathoms (See Chart No. 1, I10) This notice affects Electronic Navigational Chart: CA270389	50°07'27.4"N 129°35'38.9"W  <i>DFO(6203950-02)</i>
Delete	depth of 307 fathoms (See Chart No. 1, I10) This notice affects Electronic Navigational Chart: CA270389	48°45'29.4"N 127°09'17.2"W  <i>DFO(6203950-03)</i>
Delete	depth of 379 fathoms (See Chart No. 1, I10) This notice affects Electronic Navigational Chart: CA270389	48°44'23.6"N 126°56'14.7"W  <i>DFO(6203950-04)</i>
Delete	depth of 312 fathoms (See Chart No. 1, I10) This notice affects Electronic Navigational Chart: CA270389	48°43'59.7"N 126°47'13.9"W  <i>DFO(6203950-05)</i>
Delete	depth of 222 fathoms (See Chart No. 1, I10) This notice affects Electronic Navigational Chart: CA270389	48°43'25.6"N 126°40'40.3"W  <i>DFO(6203950-06)</i>
Add	depth of 694 fathoms (See Chart No. 1, I10) This notice affects Electronic Navigational Chart: CA270389	48°43'24.0"N 126°40'41.8"W  <i>DFO(6203950-07)</i>
Add	depth of 1108 fathoms (See Chart No. 1, I10) This notice affects Electronic Navigational Chart: CA270389	48°45'29.0"N 127°09'20.3"W  <i>DFO(6203950-08)</i>
Add	depth of 735 fathoms (See Chart No. 1, I10) This notice affects Electronic Navigational Chart: CA270389	48°43'59.2"N 126°47'14.3"W  <i>DFO(6203950-09)</i>
Add	depth of 792 fathoms (See Chart No. 1, I10) This notice affects Electronic Navigational Chart: CA270389	48°44'23.8"N 126°56'14.3"W  <i>DFO(6203950-10)</i>

MONTHLY NOTICES TO MARINERS  
WESTERN EDITION 02/2019  
SECTION 2 – CHART CORRECTIONS

---

**3311 - Port Moody to/à Howe Sound - Sheet/Feuille 1 - New Edition - 31-DEC-1993 - NAD 1983**

22-FEB-2019

LNMD. 14-DEC-2018

Add submarine cable joining 49°20'36.4"N 123°25'44.2"W  
(See Chart No. 1, L30.1) 49°20'38.4"N 123°25'54.4"W  
49°20'34.1"N 123°27'22.3"W  
49°20'28.6"N 123°28'07.9"W  
49°20'34.4"N 123°29'13.5"W  
49°20'52.8"N 123°30'59.8"W  
49°21'16.4"N 123°31'58.7"W  
and 49°23'00.0"N 123°37'53.3"W

This notice affects Electronic Navigational Chart: CA370016, CA370381, CA370382, CA470004

*DFO(6203983-01)*

**3311 - Howe Sound to/à Pender Harbour - Sheet/Feuille 3 - New Edition - 31-DEC-1993 - NAD 1983**

22-FEB-2019

LNMD. 14-DEC-2018

Add submarine cable joining 49°20'36.4"N 123°25'44.2"W  
(See Chart No. 1, L30.1) 49°20'38.4"N 123°25'54.4"W  
49°20'34.1"N 123°27'22.3"W  
49°20'28.6"N 123°28'07.9"W  
49°20'34.4"N 123°29'13.5"W  
49°20'52.8"N 123°30'59.8"W  
49°21'16.4"N 123°31'58.7"W  
49°24'39.7"N 123°44'00.9"W  
49°25'57.3"N 123°46'53.1"W  
49°26'13.0"N 123°49'17.7"W  
and 49°25'20.9"N 123°54'50.3"W

This notice affects Electronic Navigational Chart: CA370016, CA370381, CA370382, CA470004

*DFO(6203983-01)*

**3410 - Pedder Bay - New Edition - 17-MAY-2013 - World Geodetic System 1984**

08-FEB-2019

LNMD. 12-SEP-2014

Reposition green port hand pillar buoy, marked V11 from 48°20'31.3"N 123°33'28.7"W  
(See Chart No. 1, Qg) to 48°20'31.1"N 123°33'28.2"W  
This notice affects Electronic Navigational Chart: CA570101

*(P2018137) DFO(6203943-01)*

**3463 - Strait of Georgia, Southern Portion/Partie Sud - New Edition - 01-JUL-2005 - NAD 1983**

22-FEB-2019

LNMD. 19-OCT-2018

Add SILTING 49°03'15.0"N 122°58'00.0"W  
Mariners are advised that depths shown in the vicinity of Boundary Bay  
are subject to change as a result of silting.

**ENVASEMENT**

Les navigateurs prendront garde que les profondeurs cartographiées à  
proximité de Boundary Bay peuvent changer en raison de l'ensablement.

This notice affects Electronic Navigational Chart: CA370145

*DFO(6203975-01)*

MONTHLY NOTICES TO MARINERS  
WESTERN EDITION 02/2019  
SECTION 2 – CHART CORRECTIONS

---

Add submarine cable joining 49°20'36.4"N 123°25'44.2"W  
(See Chart No. 1, L30.1) 49°20'38.4"N 123°25'54.4"W  
49°20'34.1"N 123°27'22.3"W  
49°20'28.6"N 123°28'07.9"W  
49°20'34.4"N 123°29'13.5"W  
49°20'52.8"N 123°30'59.8"W  
49°21'16.4"N 123°31'58.7"W  
and 49°22'00.0"N 123°34'23.7"W

This notice affects Electronic Navigational Chart: CA370016, CA370381, CA370382, CA470004  
DFO(6203983-01)

**3475 - Dodd Narrows to/à Flat Top Islands - New Edition - 30-DEC-2005 - NAD 1983**

08-FEB-2019

LNMD. 29-JUN-2018

Add pile 49°08'22.0"N 123°51'07.4"W  
(See Chart No. 1, F22)  
This notice affects Electronic Navigational Chart: CA570156  
DFO(6203946-01)

Add pile 49°08'22.0"N 123°51'06.2"W  
(See Chart No. 1, F22)  
This notice affects Electronic Navigational Chart: CA570156  
DFO(6203946-02)

Add breakwater between 49°08'22.9"N 123°51'04.9"W  
(See Chart No. 1, F4.1) and 49°08'19.0"N 123°51'06.2"W  
This notice affects Electronic Navigational Chart: CA570156  
DFO(6203946-03)

**3489 - Pattullo Bridge to/à Barnston Island - Sheet/Feuille 1 - New Chart - 21-OCT-1994 - NAD 1983**

22-FEB-2019

LNMD. 06-APR-2018

Affix patch 49°11'37.0"N 122°41'00.0"W  
Download Patch - [ftp://ftp.dfo-mpo.gc.ca/patches/3489A Patch\\_NTM20190222.pdf](ftp://ftp.dfo-mpo.gc.ca/patches/3489A Patch_NTM20190222.pdf)  
DFO(6203987-01)

**3489 - Barnston Island to/à Crescent Island - Sheet/Feuille 2 - New Chart - 21-OCT-1994 - NAD 1983**

22-FEB-2019

LNMD. 06-APR-2018

Affix patch 49°12'00.0"N 122°40'00.0"W  
Download Patch - [ftp://ftp.dfo-mpo.gc.ca/patches/3489B Patch\\_NTM20190222.pdf](ftp://ftp.dfo-mpo.gc.ca/patches/3489B Patch_NTM20190222.pdf)  
DFO(6203987-02)

**3512 - Strait of Georgia, Central Portion/Partie Centrale - New Edition - 25-DEC-1998 - NAD 1983**

22-FEB-2019

LNMD. 30-NOV-2018

Add rock awash at chart datum 49°45'44.1"N 123°57'00.0"W  
(See Chart No. 1, K12)  
This notice affects Electronic Navigational Chart: CA370381, CA470095  
DFO(6203964-03)

MONTHLY NOTICES TO MARINERS  
WESTERN EDITION 02/2019  
SECTION 2 – CHART CORRECTIONS

---

Add submarine cable (See Chart No. 1, L30.1) joining 49°20'36.4"N 123°25'44.2"W  
 49°20'38.4"N 123°25'54.4"W  
 49°20'34.1"N 123°27'22.3"W  
 49°20'28.6"N 123°28'07.9"W  
 49°20'34.4"N 123°29'13.5"W  
 49°20'52.8"N 123°30'59.8"W  
 49°21'16.4"N 123°31'58.7"W  
 49°24'39.7"N 123°44'00.9"W  
 49°25'57.3"N 123°46'53.1"W  
 49°26'13.0"N 123°49'17.7"W  
 49°25'16.2"N 123°55'18.0"W  
 49°23'40.5"N 124°07'10.7"W  
 49°23'16.2"N 124°08'57.8"W  
 49°22'57.4"N 124°09'36.9"W  
 49°20'40.8"N 124°17'00.8"W  
 49°20'39.6"N 124°18'06.3"W  
 49°21'00.7"N 124°20'14.0"W  
 49°20'55.8"N 124°20'43.9"W  
 and 49°20'37.5"N 124°21'11.7"W

This notice affects Electronic Navigational Chart: CA370016, CA370381, CA370382, CA470004  
 DFO(6203983-01)

**3513 - Strait of Georgia, Northern Portion/Partie Nord - New Edition - 29-OCT-1999 - NAD 1983**  
 22-FEB-2019 LNM/D. 14-DEC-2018

Add submarine cable (See Chart No. 1, L30.1) between 49°20'39.0"N 124°21'11.0"W  
 and 49°20'56.9"N 124°20'41.2"W  
 This notice affects Electronic Navigational Chart: CA370016, CA370381, CA370382, CA470004  
 DFO(6203983-01)

**3514 - Jervis Inlet - New Edition - 02-AUG-1996 - NAD 1983**  
 22-FEB-2019 LNM/D. 17-AUG-2018

Delete depth of 5.5 metres (See Chart No. 1, I10) 49°45'44.9"N 123°57'02.6"W  
 This notice affects Electronic Navigational Chart: CA470095  
 DFO(6203964-01)

Add rock which covers and uncovers with drying height of 0.6 metres (See Chart No. 1, K11) 49°45'01.3"N 123°53'56.6"W  
 This notice affects Electronic Navigational Chart: CA470095  
 DFO(6203964-02)

Add rock awash at chart datum (See Chart No. 1, K12) 49°45'44.1"N 123°57'00.0"W  
 This notice affects Electronic Navigational Chart: CA370381, CA470095  
 DFO(6203964-03)

Add rock which covers and uncovers with drying height of 0.5 metres (See Chart No. 1, K11) 49°44'51.4"N 123°54'59.0"W  
 This notice affects Electronic Navigational Chart: CA470095  
 DFO(6203964-04)

Add depth of 1.5 metres (See Chart No. 1, I10) 49°45'32.2"N 123°55'23.5"W  
 This notice affects Electronic Navigational Chart: CA470095  
 DFO(6203964-05)

MONTHLY NOTICES TO MARINERS  
WESTERN EDITION 02/2019  
SECTION 2 – CHART CORRECTIONS

---

Add depth of 4.2 metres 49°45'45.6"N 123°56'38.9"W  
(See Chart No. 1, I10)  
This notice affects Electronic Navigational Chart: CA470095

*DFO(6203964-06)*

**3514 - Sechart Rapids - New Edition - 02-AUG-1996 - NAD 1983**

22-FEB-2019

LNM/D. 17-AUG-2018

Affix patch 49°44'00.0"N 123°53'00.0"W  
Download Patch - [ftp://ftp.dfo-mpo.gc.ca/patches/3514\\_Patch\\_NTM20190222.pdf](ftp://ftp.dfo-mpo.gc.ca/patches/3514_Patch_NTM20190222.pdf)  
This notice affects Electronic Navigational Chart: CA570097

*DFO(6203964-07)*

**3526 - Howe Sound - New Edition - 01-JUL-2005 - NAD 1983**

22-FEB-2019

LNM/D. 07-JUL-2017

Add submarine cable joining 49°20'36.4"N 123°25'44.2"W  
(See Chart No. 1, L30.1) 49°20'38.4"N 123°25'54.4"W  
49°20'34.1"N 123°27'22.3"W  
49°20'28.6"N 123°28'07.9"W  
49°20'34.4"N 123°29'13.5"W  
49°20'52.8"N 123°30'59.8"W  
49°21'16.4"N 123°31'58.7"W  
and 49°21'32.2"N 123°32'52.8"W

This notice affects Electronic Navigational Chart: CA370016, CA370381, CA370382, CA470004

*DFO(6203983-01)*

**3548 - Port Hardy - New Edition - 26-SEP-1997 - NAD 1983**

22-FEB-2019

LNM/D. 24-AUG-2018

Affix patch 50°43'00.0"N 127°29'00.0"W  
Download Patch - [ftp://ftp.dfo-mpo.gc.ca/patches/3548\\_Patch\\_NTM20190222.pdf](ftp://ftp.dfo-mpo.gc.ca/patches/3548_Patch_NTM20190222.pdf)  
This notice affects Electronic Navigational Chart: CA570033

*DFO(6203959-01)*

**3646 - Bamfield Inlet - New Edition - 30-JUN-1995 - NAD 1983**

15-FEB-2019

LNM/D. 05-OCT-2018

Delete starboard hand daybeacon 48°49'43.3"N 125°08'22.1"W  
(See Chart No. 1, Qt) (P2018141) *DFO(6203956-01)*

Add drying height of 0.8 metres 48°49'42.9"N 125°08'21.9"W  
(See Chart No. 1, I15)  
This notice affects Electronic Navigational Chart: CA570227

*DFO(6203956-02)*

**3890 - Alliford Bay - New Chart - 14-MAR-1986 - NAD 1927**

01-FEB-2019

LNM/D. 28-SEP-2018

Amend Fl to read Fl 6s against light 53°12'56.7"N 131°59'27.9"W  
(See Chart No. 1, P1)

*LL(782) DFO(6203940-01)*



MONTHLY NOTICES TO MARINERS  
WESTERN EDITION 02/2019  
SECTION 2 – CHART CORRECTIONS

---

**3934 - Selwyn Inlet to/à Lawn Point - New Edition - 12-JUN-1998 - NAD 1983**

01-FEB-2019

LNMD. 28-SEP-2018

Amend FI to read FI 6s against light  
(See Chart No. 1, P1)

53°12'55.8"N 131°59'34.1"W

*LL(782) DFO(6203940-01)*

**3934 - Approaches to/Approches à Smith Sound and/et Rivers Inlet - New Chart - 21-FEB-1992 - NAD 1983**

22-FEB-2019

LNMD. 23-NOV-2018

Amend FI to read FI 6s against light  
(See Chart No. 1, P1)

51°25'27.5"N 127°42'01.5"W

*LL(583) DFO(6203984-01)*

**3935 - Hakai Passage and Vicinity/et Environs - New Chart - 28-JAN-2000 - NAD 1983**

15-FEB-2019

LNMD. 09-NOV-2018

Add yellow ODAS/SADO lighted pillar buoy FI(5) Y20s, marked Priv  
(See Chart No. 1, Q58)  
This notice affects Electronic Navigational Chart: CA470358

51°39'10.1"N 128°05'13.0"W

*DFO(6203958-01)*

**3945 - Coghlan Anchorage - New Chart - 25-DEC-2009 - NAD 1983**

08-FEB-2019

LNMD. 26-OCT-2018

Add rock which covers and uncovers with drying height of 1.1 metres  
(See Chart No. 1, K11)  
This notice affects Electronic Navigational Chart: CA570592

53°25'25.4"N 129°14'14.6"W

*DFO(6203952-01)*

Delete depth of 0.4 metres  
(See Chart No. 1, I10)

53°25'25.3"N 129°14'14.7"W

This notice affects Electronic Navigational Chart: CA570592

*DFO(6203952-02)*

**3947 - Grenville Channel to/à Chatham Sound - New Chart - 25-DEC-2009 - NAD 1983**

08-FEB-2019

LNMD. 26-OCT-2018

Reposition ON CERTAIN COPIES  
rock which covers and uncovers with drying height of 0.4 metres  
(See Chart No. 1, K11)

from 54°10'18.4"N 130°17'00.3"W  
to 54°10'18.4"N 130°17'03.0"W

*DFO(6203951-01)*

**6417 - Tulita (Fort Norman), Police Island to/aux Halfway Islands Kilometre 810 / kilometre 860 - New Edition - 27-APR-2018 - NAD 1983**

22-FEB-2019

Add green port hand can buoy  
(See Chart No. 1, Qg)

64°54'49.0"N 125°46'36.0"W

*DFO(6604517-01)*

MONTHLY NOTICES TO MARINERS  
WESTERN EDITION 02/2019  
SECTION 3 – RADIO AIDS TO MARINE NAVIGATION CORRECTIONS

---

NO CORRECTIONS FOR THIS SECTION.

SECTION 4 – SAILING DIRECTIONS AND SMALL CRAFT GUIDE CORRECTIONS

---

ARC 401 — Hudson Strait, Hudson Bay and Adjoining Waters, First Edition, 2009 —

Chapter 6 — Paragraph 238

Delete: 000°

Replace by: 358½°

(C2018-018.01)

Chapter 6 — Paragraph 239

Delete: 029½°

Replace by: 027°

(C2018-018.02)

PAC 201 — Juan de Fuca Strait and Strait of Georgia, First Edition, 2012 —

Chapter 4 — Delete paragraph 235

Replace by: 235 **Golden Ears Bridge** (*TransLink*) is a fixed span road bridge. Bishops Reach (north side) has a vertical clearance of 34 m. Parsons Channel (south side) has a vertical clearance of 14 m.

(P2019-3.1)

Chapter 9 — Before paragraph 369

Insert: 368.1 Two underwater **rocks**, close NE of Three Islets are a **hazard** to navigation. These rocks, and Three Islets collectively, are known locally as **Cod Rocks**. Mariners are advised to give Cod Rocks a wide berth.

(P2019-3.2)

Chapter 9 — Adjacent to paragraph 368.1, add a caution pictograph.

(P2019-3.3)

INDEX — After “Cockburn Bay, C9/P124”

Insert: Cod Rocks, C9/P368.1

(P2019-3.4)

PAC 202 — Discovery Passage to Queen Charlotte Strait and West Coast of Vancouver Island, First Edition, 2016 —

Chapter 6 — Paragraph 63

Delete: and has a **starboard hand daymark**

(P2019-2.1)

Chapter 6 — Paragraph 263

Delete: has a **starboard hand daymark**

Replace by: is shown from a mast

(P2019-2.2)

PAC 205 — Inner Passage, Queen Charlotte Sound to Chatham Sound, First Edition, 2002 —

Chapter 1 — In the vicinity of paragraph 452

Delete the photograph of **Dryad Point light (1986)** and replace it with the new **Dryad Point Light (2018)** photograph provided in **Section 4** of this Monthly Edition.

[www.notmar.gc.ca/publications/monthly-mensuel/images/ed0219-sec4-pac205-dryad-point-light-2018.pdf](http://www.notmar.gc.ca/publications/monthly-mensuel/images/ed0219-sec4-pac205-dryad-point-light-2018.pdf)

(P2018-18.1)

SECTION 4 – SAILING DIRECTIONS AND SMALL CRAFT GUIDE CORRECTIONS

---

PAC 206 — Hecate Strait, Dixon Entrance, Portland Inlet and Adjacent Waters, and Haida Gwaii, Second Edition, 2015 —

Chapter 1 — Paragraph 165

Delete: 44 feet (13.3 m) from a white mast

Replace by: 62 feet (19 m) from a white tower

(P2018-30.1)

Chapter 1 — After paragraph 237

Insert: 237.1 *Baird Point light* (742.5), on the west side of McCauley Island, is shown from a white tower fitted with a **Racon** (— • —).

(P2019-1.1)

Chapter 1 — Adjacent to paragraph 237.1, add a light pictograph.

(P2019-1.2)

Chapter 1 — Paragraph 249

Delete: 15 feet (4.7 m) from a white tower

Replace by: 22 feet (6.6 m) from a white tower with a green band at the top

(P2018-30.2)

Chapter 1 — Paragraph 500

Delete: 27 feet (8.2 m) from a skeleton tower

Replace by: 30.5 feet (9.3 m) from a white tower

(P2018-30.3)

Chapter 1 — Paragraph 503

Delete: grey tower

Replace by: mast with a white base

(P2018-30.4)

Chapter 1 — Paragraph 508

Delete: 28 feet (8.6 m) from a white tower

Replace by: 29.5 feet (9 m) from a white tower with a red band at the top

(P2018-30.5)

Chapter 1 — Paragraph 524

Delete: 15 feet (4.7 m) from a skeleton tower

Replace by: 23 feet (7 m) from a white tower with a red band at the top

(P2018-30.6)

Chapter 1 — Paragraph 527

Delete: 34 feet (10.3 m) from a skeleton tower

Replace by: 28 feet (8.4 m) from a white tower with a green band at the top

(P2018-30.7)

Chapter 1 — Delete paragraph 634

Replace by: 634 *Nepean Rock South Cardinal light and bell buoy* “EM” (741.5), SW of Fleishman Point at the west entrance to Otter Channel, is fitted with a **Racon** (— •).

(P2018-30.8)

SECTION 4 – SAILING DIRECTIONS AND SMALL CRAFT GUIDE CORRECTIONS

---

Chapter 2 — After paragraph 141

Insert: 141.1 Boat Rock **light** (*US 21915*), 2 miles NE of Cape Fox, is shown at an elevation of 38 feet (11.6 m) from a spindle. The light is obscured from 049° to 210°, through east and south.

(P2018-30.9)

Chapter 2 — Adjacent to paragraph 141.1, add a light pictograph.

(P2018-30.10)

Chapter 2 — Paragraph 375

Delete: orange

Replace by: red

(P2018-30.11)

Chapter 3 — Paragraph 165

Delete: 2 feet (0.6 m)

Replace by: 3 feet (1.0 m)

(P2018-30.12)

Chapter 3 — Paragraph 168

Delete: 14-foot (4.3-m)

Replace by: 13-foot (4-m)

(P2019-1.3)

Chapter 3 — Paragraph 173

Delete: 15 feet (4.6 m)

Replace by: 13 feet (4.1 m)

(P2019-1.4)

Chapter 3 — Delete paragraph 402

Replace by: 402 **Lights.** — Kwuna Point **light** (*782*), on rocks NW of the public dock, is shown at an elevation of 6.4 m from a white tower.

(P2018-30.13)

MONTHLY NOTICES TO MARINERS  
WESTERN EDITION 02/2019

SECTION 5 – LIST OF LIGHTS, BUOYS AND FOG SIGNALS CORRECTIONS

The amendments are highlighted and deletions are crossed out. For general and region-specific information on the List of Lights, click on the following links: [Newfoundland and Labrador Coast](#), [Atlantic Coast](#), [Inland Waters](#) and [Pacific Coast](#).

No.	Name	Position ----- Latitude N. Longitude W.	Light Characteristics	Focal Height in m. above water	Nomi- nal Range	Description ----- Height in meters above ground	Remarks ----- Fog Signals
-----	------	--	--------------------------	--	-----------------------	--	---------------------------------

**PACIFIC COAST**

**WEST COAST, VANCOUVER ISLAND (LL 66 – 179.1)**

147 G5254.2	Hand Island	On islet NE. of island. 48 57 07.6 125 18 27.8	Fl W 4s	8.8	5	White square tower.	Visible from 108° through S., W. and N. to 005°; obscured from 005° to 011°; visible from 011° to 040°; obscured from 040° to 108°; Year round.  Chart:3670 Edn 02/19 (P18-147)
171.5 G5258.4	Grappler Inlet	On point, N. shore, W. of Port Désiré. 48 49 54.7 125 07 38.1	Fl W 4s	1.4	4	Pipe tower.	Year round.  Chart:3646 Edn 02/19 (P19-015)

**HOWE SOUND (LL 417 – 432)**

417 G5419.4	Cape Roger Curtis	On cape, near entrance to Collingwood Channel. 49 20 24.0 123 25 58.3	Fl(3) W 12s	9.6	5	White square tower.	Flash 0.5 s; eclipse 2 s; flash 0.5 s; eclipse 2 s; flash 0.5 s; eclipse 6.5 s. Radar reflector. Year round.  Chart:3526 Edn 02/19 (P19-009)
----------------	-------------------	---	-------------	-----	---	---------------------	---

**QUEEN CHARLOTTE SOUND (LL 569.2 – 586)**

583 G5668	Major Brown Rock	On rock, entrance to Rivers Inlet. 51 25 27.5 127 42 01.4	Fl W 6s	13.3	5	Square skeleton tower.	Flash 0.5 s; eclipse 5.5 s. Year round.  Chart:3934 Edn 02/19
--------------	------------------	---	---------	------	---	------------------------	--

**CANADIAN COAST GUARD – MARINE INFORMATION REPORT AND SUGGESTION SHEET**

Name of Ship or Sender: ..... Date: .....

Address of Sender: .....  
Street # Street Name

Town / City: ..... Prov / State: ..... Postal Code / Zip Code: .....

Tel / Fax / E-mail address of sender: .....

Observation Date: ..... Time (UTC): .....

Geographical Position: .....

Coordinate Position: Lat: ..... Long: .....

Position Method:  DGPS  GPS with WAAS  GPS  Radar  Other

Horizontal Datum Used:  WGS 84  NAD 27  Other

Estimated Position Accuracy: .....

Chart #: ..... Datum:  NAD 27  NAD 83

Chart Edition: ..... Last Correction applied: .....

Publications affected (Quote edition and page number): .....

\*Full details (Attach additional sheets as necessary): .....

Mariners are requested to notify the responsible authorities when new or suspected dangers to navigation are discovered, changes are observed in aids to navigation, or corrections to publications are seen to be necessary.

*In the case of new or suspected dangers to navigation, it is important that all details be given in order to aid with future investigations. Items of interest include heights, depths, physical description, type of bottom and equipment method used to position the item. It is helpful to mark details on the chart, which will be promptly replaced by the Canadian Hydrographic Service.*

Reports should be made to the nearest Marine Communications and Traffic Services Centre (MCTS) and should be confirmed in writing to:

Leader, Notices to Mariners  
Canadian Coast Guard  
Department of Fisheries and Oceans  
Montreal, QC H2Y 2E7  
[Notmar.XNCR@dfo-mpo.gc.ca](mailto:Notmar.XNCR@dfo-mpo.gc.ca)

In the case of information concerning aids to navigation or the List of Lights, Buoys and Fog Signals book.

**OR**

Director General, Canadian Hydrographic Service &  
Oceanographic Services  
Department of Fisheries and Oceans  
Ottawa, ON K1A 0E6  
[CHSINFO@dfo-mpo.gc.ca](mailto:CHSINFO@dfo-mpo.gc.ca)

In the case of new or suspected dangers to navigation or where corrections to "Sailing Directions" appear to be necessary.

For general questions on Canadian Coast Guard programs or services, please send an e-mail to:  
[info@dfo-mpo.gc.ca](mailto:info@dfo-mpo.gc.ca)