



Fisheries and Oceans  
Canada

Pêches et Océans  
Canada

Canadian  
Coast Guard

Garde côtière  
canadienne

# NOTICES TO MARINERS PUBLICATION EASTERN EDITION

MONTHLY EDITION N°03  
March 27, 2020



Safety First, Service Always

Published Monthly by the  
**CANADIAN COAST GUARD**  
[www.notmar.gc.ca/subscribe](http://www.notmar.gc.ca/subscribe)

## CONTENTS

	Page
Section 1	General and Safety Information..... 1 - 8
Section 2	Chart Corrections..... 9 - 29
Section 3	Radio Aids to Marine Navigation Corrections ..... 30 - 31
Section 4	Sailing Directions and Small Craft Guide Corrections..... 32 - 34
Section 5	List of Lights, Buoys and Fog Signals Corrections..... 35 - 37

Notices to Mariners Publication  
Eastern Edition  
Monthly Edition N°03/2020

**Published under the authority of:**  
Canadian Coast Guard Programs  
Aids to Navigation and Waterways  
Fisheries and Oceans Canada  
Montreal, Quebec  
H2Y 2E7

© Her Majesty the Queen in Right of Canada, 2020  
Fs152-5E-PDF  
ISSN 1719-7678

Available on the Notices to Mariners website:  
[www.notmar.gc.ca](http://www.notmar.gc.ca)

Disponible en français :  
Publication des Avis aux navigateurs  
Édition de l'Est  
Édition mensuelle N°03/2020

## EXPLANATORY NOTES

**Geographical positions** refer directly to the graduations of the largest scale Canadian Hydrographic chart unless otherwise indicated.

**Bearings** refer to the true compass and are measured clockwise from 000° (North) clockwise to 359°; those relating to lights are from seaward.

**Visibility** of lights is that in clear weather.

**Depths** - The units used for soundings (metres, fathoms or feet) are stated in the title of each chart.

**Elevations** are normally given above Higher High Water, Large Tide unless otherwise indicated.

**Distances** may be calculated as follows:

1 nautical mile = 1,852 metres (6,076.1 feet)

1 statute mile = 1,609.3 metres (5,280 feet)

1 metre = 3.28 feet

**Temporary & Preliminary Notices** are indicated by a (T) or a (P) in Section 1, respectively. Please note that Nautical charts are not amended by the Canadian Hydrographic Service for Temporary (T) and Preliminary (P) Notices. It is recommended that mariners chart these corrections in pencil. The list of charts affected by Temporary and Preliminary Notices are revised and promulgated quarterly in Section 1 of the Monthly Edition.

**Please note that, in addition to the temporary and preliminary changes normally advertised as (T) and (P) Notices, there are a few permanent changes to aids to navigation that have been advertised as Preliminary Notices to Mariners while charts are being updated for new editions.**

### Marine Information Report & Suggestion Sheet

Mariners are requested to notify the responsible authorities when new or suspected dangers to navigation are discovered, changes observed in aids to navigation or corrections to publications are seen to be necessary. Such communications can be made using the *Marine Information Report & Suggestion Sheet* inserted on the last page of each monthly edition of *Notices to Mariners*.

### Canadian Hydrographic Service – Information Published in Section 2 of *Notices to Mariners*

Mariners are advised that only the most critical changes that directly affect safety to navigation are issued in Section 2 – Chart Corrections. This limitation is required to ensure that charts remain as clear and easy to read as possible. As a result, mariners may see minor discrepancies of a non-critical nature between information in official publications. For example, a small change in the nominal range or focal height of a light may not result in the production of a chart correction in *Notices to Mariners*, but may result in a correction in the *List of Lights, Buoys and Fog Signals* publication.

**In case of discrepancy between information provided on CHS charts relating to aids to navigation, and the *List of Lights, Buoys and Fog Signals* publication, the latter shall be deemed as containing the most up-to-date information.**

### Canadian Nautical Charts & Publications

A source list of Canadian nautical charts and publications is published in Notice No. 14 of the *Notices to Mariners Annual Edition 2020*. The source supply and the prices effective at the time of printing are listed. For current chart edition dates, please refer to the following website: [www.chs-shc.gc.ca/charts-cartes/paper-papier/index-eng.asp](http://www.chs-shc.gc.ca/charts-cartes/paper-papier/index-eng.asp)

## CHART CORRECTIONS – SECTION 2

Corrections to nautical charts will be listed in numerical order by chart number. Each chart correction listed applies only to that particular chart. Related charts, if any, will have their own specific correction listed separately.

Users should also refer to CHS *Chart 1: Symbols, Abbreviations and Terms* for additional information pertaining to the correction of charts.

The illustration below describes the elements that will comprise a typical Section 2 chart correction:

	Chart Number	Chart Title	Charts latest new edition date	Horizontal Chart Datum	Last Correction
Weekly chart correction date	1202	Cap Eternité à/to Saint-Fulgence – New Edition – 20-MAY-94 – NAD 1927			
	6-Aug-1999				LNM/D 23-Jul-1999
	Add	light Fl G		48°26'36.4"N 70°53'08.6"W	
		(See Chart No 1 P24)	(F2007-107) LL (700)	DFO(6829264-01)	
	Chart action	Chart No 1 reference no.	CCG reference no.	List of light no.	CHS reference no.

The last correction number is identified with the **LNM/D** or Last Notice to **Mariners** Number / Date.

## NOTICES TO MARINERS WEBSITE – MONTHLY EDITIONS, CHART CORRECTIONS, AND CHART PATCHES

The Notices to Mariners website allows users to access the [monthly publications](#), [chart corrections](#), and [chart patches](#).

Users can subscribe for free to the [email notification service](#) to receive notifications when charts of interest are updated, including their patches, as well as when a new monthly edition becomes available online.

In addition, the monthly publication and related files to download, such as chart patches and *Sailing Directions* diagrams, can be obtained all together through the download of a single ZIP file.

## ADVISORY NAVIGATIONAL WARNINGS / NOTICES TO SHIPPING

The Canadian Coast Guard is implementing a number of changes to the aids to navigation system in Canada.

These changes are advertised as Navigational Warnings, formerly called Notices to Shipping<sup>1</sup>, that are broadcast by the Canadian Coast Guard, and are then followed up with Notices to Mariners, then charts are updated by hand correction, reprints or new editions.

Mariners are advised that all relevant Navigational Warnings (NAVWARNs) should be kept until superseded by Notices to Mariners or through revised charts issued by the Canadian Hydrographic Service (CHS).

Navigational Warnings are accessible on the applicable regional page on the Canadian Coast Guard e-Navigation Maritime Information Portal at <http://www.marinfo.gc.ca/e-nav>.

The Canadian Hydrographic Service is reviewing the impact of these changes with the Canadian Coast Guard and together are preparing an action plan on the issuing of chart revisions.

For further information, contact your regional Navigational Warning (NAVWARN) Issuing Desk.

### Atlantic Region

#### \* Port aux Basques MCTS Centre

Canadian Coast Guard  
49 Stadium Rd.  
P.O. Box 99  
Port aux Basques, NL A0M 1C0

Telephone: (709) 695-2168 or 1-800-563-9089  
Facsimile: (709) 695-7784

Email: [NAVWARN.MCTSPortAuxBasques@innav.gc.ca](mailto:NAVWARN.MCTSPortAuxBasques@innav.gc.ca)  
Website: <http://www.marinfo.gc.ca/e-nav>

#### \* Sydney MCTS Centre

Canadian Coast Guard  
1190 Westmount Road  
Sydney, NS B1R 2J6

Telephone: (902) 564-7751 or 1-800-686-8676  
Facsimile: (902) 564-7662

Email: [NAVWARN.MCTSSydney@innav.gc.ca](mailto:NAVWARN.MCTSSydney@innav.gc.ca)  
Website: <http://www.marinfo.gc.ca/e-nav>

### Central & Arctic Region

#### \* Prescott MCTS Centre

Canadian Coast Guard  
401 King Street West  
P.O. Box 1000  
Prescott, ON K0E 1T0

"C" and "Q" Series  
Telephone: (613) 925-0666  
Facsimile: (613) 925-4519

Email: [NAVWARN.MCTSPrescott@innav.gc.ca](mailto:NAVWARN.MCTSPrescott@innav.gc.ca)  
Website: <http://www.marinfo.gc.ca/e-nav>

#### \* Iqaluit MCTS Centre

*Operational from approximately mid-May until late December.*

Canadian Coast Guard  
P.O. Box 189  
Iqaluit, NU X0A 0H0

"A" Series  
Telephone: (867) 979-5269

"H" Series  
Telephone: (867) 979-0310

Facsimile: (867) 979-4264  
Email: [NAVWARN.MCTSIqaluit@innav.gc.ca](mailto:NAVWARN.MCTSIqaluit@innav.gc.ca)  
Website: <http://www.marinfo.gc.ca/e-nav>

\* Service available in English and French.

---

<sup>1</sup> The expression "Notice to Shipping" was changed to "Navigational Warning" in January 2019.

**INDEX**

**SECTION 1 – GENERAL AND SAFETY INFORMATION 1**

Transport Canada – Restricted Speed Area - St. Clair and Detroit Rivers .....	1
Canadian Coast Guard Publication – Comments and Suggestions on Notices to Mariners (Notmar) Publications .....	1
Canadian Hydrographic Service – Modifications to the 2020 Canadian Tide and Current Tables Volume 1 – Atlantic Coast and Bay of Fundy .....	1
*301 Canadian Hydrographic Service – Nautical Charts .....	1
*302 Canadian Hydrographic Service – Electronic Navigational Charts .....	1
*303 Canadian Hydrographic Service – Raster Digital Charts (BSB V3) .....	1
*304 Transport Canada – Ship Safety Bulletins #01, #02, #03, #04 and #05/2020 .....	2
*305 Canadian Hydrographic Service – Sailing Directions – Atl 120 is Now Available As a Print-On-Demand (POD) Product. ....	2
*306 Guyon Island to / à Flint Island – Changes to the Period of Service .....	2
*307(P) St. Margaret's Bay – Notice of Proposed Changes .....	3
*308(P) Little Bay Island to / à League Rock – Light Buoy to be Repositioned .....	4
*309(P) White Bay and / et Notre Dame Bay – Light Buoy to be Discontinued .....	4
*310(P) Cape Tormentine à / to West Point – Notice of Proposed Changes .....	5
*311(P) Entrée à / Entrance to Miramichi River – Notice of Proposed Changes .....	6
*312(P) St. Lewis Sound and / et Inlet – Light Buoy to be Discontinued .....	7
*313(P) St. Lewis Sound and / et Inlet – Light Buoys to be Established .....	7
*314(T) Toronto Harbour – Construction Operations .....	8

**SECTION 2 – CHART CORRECTIONS 9**

**SECTION 3 – RADIO AIDS TO MARINE NAVIGATION CORRECTIONS 30**

*315 Radio Aids to Marine Navigation 2019 (Atlantic, St. Lawrence, Great Lakes, Lake Winnipeg, Arctic and Pacific) .....	30
--	----

**SECTION 4 – SAILING DIRECTIONS AND SMALL CRAFT GUIDE CORRECTIONS 32**

**SECTION 5 – LIST OF LIGHTS, BUOYS AND FOG SIGNALS CORRECTIONS 35**

NUMERICAL INDEX OF CANADIAN CHARTS AFFECTED

Chart No.	Page	Chart No.	Page	Chart No.	Page	Chart No.	Page
1234	<a href="#">9</a>	4394	<a href="#">17, 35</a>	7783	<a href="#">28</a>		
1236	<a href="#">9</a>	4402	<a href="#">17, 18</a>	8006	<a href="#">29</a>		
1314	<a href="#">9, 10, 36, 37</a>	4405	<a href="#">18, 19</a>	8007	<a href="#">29</a>		
1315	<a href="#">10, 36</a>	4406	<a href="#">20, 21</a>				
1317	<a href="#">36</a>	4425	<a href="#">21</a>				
1429	<a href="#">10, 37</a>	4430	<a href="#">21, 36</a>				
1430	<a href="#">10, 11</a>	4452	<a href="#">36</a>				
2021	<a href="#">37</a>	4485	<a href="#">21</a>				
2085	<a href="#">8</a>	4583	<a href="#">21</a>				
2274	<a href="#">11</a>	4592	<a href="#">4</a>				
2292	<a href="#">1</a>	4625	<a href="#">21, 35</a>				
4000	<a href="#">11</a>	4663	<a href="#">22</a>				
4001	<a href="#">11</a>	4679	<a href="#">22, 23</a>				
4002	<a href="#">11</a>	4680	<a href="#">23, 24</a>				
4003	<a href="#">11, 12</a>	4821	<a href="#">4</a>				
4006	<a href="#">12</a>	4822	<a href="#">24</a>				
4011	<a href="#">12</a>	4841	<a href="#">24, 25</a>				
4012	<a href="#">13</a>	4905	<a href="#">5, 25</a>				
4021	<a href="#">13</a>	4911	<a href="#">6, 36</a>				
4024	<a href="#">13</a>	4921	<a href="#">25, 35</a>				
4026	<a href="#">13</a>	4950	<a href="#">26, 35</a>				
4115	<a href="#">14, 15</a>	4954	<a href="#">26</a>				
4124	<a href="#">15</a>	4970	<a href="#">26, 36</a>				
4141	<a href="#">15, 35</a>	5031	<a href="#">7, 27</a>				
4236	<a href="#">15</a>	5163	<a href="#">27</a>				
4320	<a href="#">15</a>	6409	<a href="#">27</a>				
4375	<a href="#">2, 35</a>	6410	<a href="#">27</a>				
4381	<a href="#">16, 17</a>	6427	<a href="#">27</a>				
4384	<a href="#">17</a>	7750	<a href="#">28</a>				
4386	<a href="#">3, 17</a>	7778	<a href="#">28</a>				

**TRANSPORT CANADA – RESTRICTED SPEED AREA - ST. CLAIR AND DETROIT RIVERS**

(Recurrent publication of notice \*1103/12, originally published in the *Notices to Mariners Publication - Eastern Edition 11/2012*.)

Since November 14, 2012, the restricted speed area currently in place as per the St. Clair and Detroit River Navigation Safety Regulations between the Detroit River light and Peche Island light is reduced in size by relocating the southern point of the restricted speed area from its current location at the Detroit River light to a new location at Bar Point light D33.

**CANADIAN COAST GUARD PUBLICATION – COMMENTS AND SUGGESTIONS ON NOTICES TO MARINERS (NOTMAR) PUBLICATIONS**

In an effort to continuously improve the Notices to Mariners publications and to provide the most efficient service possible, the Notices to Mariners team invites all mariners and other interested parties to submit comments and suggestions on possible improvements to its various publications and services at the following email address: [Notmar.XNCR@dfo-mpo.gc.ca](mailto:Notmar.XNCR@dfo-mpo.gc.ca)

**CANADIAN HYDROGRAPHIC SERVICE – MODIFICATIONS TO THE 2020 CANADIAN TIDE AND CURRENT TABLES VOLUME 1 – ATLANTIC COAST AND BAY OF FUNDY**

The Canadian Hydrographic Service of the Atlantic Region has identified an error in the 2020 Canadian Tide and Current Tables Volume 1 - Atlantic Coast and Bay of Fundy, Tide tables for Holyrood, Newfoundland (station #925)

**Mariners must refer to the following link for updated information on Holyrood's Tide Tables:**  
[http://tides.gc.ca/eng/data/table/2020/wlev\\_sec/925](http://tides.gc.ca/eng/data/table/2020/wlev_sec/925)

**\*301 CANADIAN HYDROGRAPHIC SERVICE – NAUTICAL CHARTS**

CHARTS	MAIN TITLE	SCALE	PUBLISHED	CAT#	PRICE
<b>New Editions</b>					
2292	Chantry Island to Cove Island	1:90 000	31-JAN-2020	3	20.00

**\*302 CANADIAN HYDROGRAPHIC SERVICE – ELECTRONIC NAVIGATIONAL CHARTS**

S-57 ENC NUMBER	CHART TITLE
<b>NEW PRODUCTS</b>	
CA373468	St. Roch and/et Rasmussen Basins
CA373486	Middlebrun Bay to/à Washington Island
CA473525	Sullukuluk (Albert Harbour)
<b>WITHDRAWN PRODUCTS</b>	
CA373065	Thunder Cape to Pigeon River

**\*303 CANADIAN HYDROGRAPHIC SERVICE – RASTER DIGITAL CHARTS (BSB V3)**

CHARTS	MAIN TITLE	SCALE	PUBLISHED
<b>New Editions</b>			
RM-2292	Chantry Island to Cove Island	1:90 000	31-JAN-2020



**\*304 TRANSPORT CANADA – SHIP SAFETY BULLETINS #01, #02, #03, #04 AND #05/2020**

New **Ship Safety Bulletins** have recently been posted to the Transport Canada website at [www.tc.gc.ca/ssb-bsn/](http://www.tc.gc.ca/ssb-bsn/).

To view or download these bulletins, please click on the links below:

[SSB#01/2020](#) – Vessel reporting requirements under the *Oil Tanker Moratorium Act*  
RDIMS#15513277

[SSB#02/2020](#) – Navigation Bridge Visibility Obstruction  
RDIMS#15841218

[SSB#03/2020](#) – Extending the Validity of Canadian Marine Personnel Certificates  
RDIMS#16367208

[SSB#04/2020](#) – Shore leave access  
RDIMS#16372746

[SSB#05/2020](#) – Deferral of the Canadian Cruise Ship Season for Vessels Capable of Carrying 500 Persons or More  
Until July 1, 2020  
RDIMS#16366492

Sign yourself up for [e-Bulletin](#) to receive an e-mail notice each time a new Ship Safety Bulletin is published on our website.

Contact us at [marinesafety-securitemaritime@tc.gc.ca](mailto:marinesafety-securitemaritime@tc.gc.ca) or 1-855-859-3123 (Toll Free).

**\*305 CANADIAN HYDROGRAPHIC SERVICE – SAILING DIRECTIONS – ATL 120 IS NOW AVAILABLE AS A PRINT-ON-DEMAND (POD) PRODUCT.**

The Sailing Directions booklet *ATL 120 – Labrador, Camp Islands to Hamilton Inlet (including Lake Melville), Second Edition, 2020* cancels and replaces Sailing Directions booklet *ATL 120 – Labrador, Camp Islands to Hamilton Inlet (including Lake Melville), First Edition, 2004*. This new booklet is now available as a Print-on-Demand (POD) product. All hard copy Print-on-Demand (POD) Sailing Directions booklets are being printed with current Notices to Mariners updates applied. These POD booklets are available for purchase from authorized chart dealers across Canada and around the world. The price for the hard copy of booklet *ATL 120, Second Edition, 2020* is \$18.95.

To access the free downloadable updated pdf files, please click on the link below:  
<http://charts.gc.ca/publications/sailingdirections-instructionsnautiques-eng.asp>

**Important Note**

It is the mariners' responsibility to maintain their digital Sailing Directions file by ensuring that the latest version is always downloaded. If the mariner chooses to print their own Sailing Directions booklet, it is imperative that the current Notices to Mariners updates are applied. Please check [this page](#) by the 15th of the month to verify the last update date for the booklet that has been downloaded, and download a new copy as required. **Do not leave port without it!**

**\*306 GUYON ISLAND TO / À FLINT ISLAND – CHANGES TO THE PERIOD OF SERVICE**

Reference Chart: 4375

The period of service for the following unlit buoys have been permanently changed from "Seasonal" to "Year round":

Gabarus Harbour buoy JX11	(LL 5752.02):	(45° 50' 00.4"N 060° 08' 00.2"W)
Gabarus Harbour buoy JX12	(LL 5752.03):	(45° 50' 32.6"N 060° 08' 16.3"W)
Gabarus Harbour buoy JX13	(LL 5752.04):	(45° 50' 31.9"N 060° 08' 16.0"W)
Gabarus Harbour buoy JX15	(LL 5752.05):	(45° 50' 28.6"N 060° 08' 18.9"W)
Gabarus Harbour buoy JX16	(LL 5752.06):	(45° 50' 28.6"N 060° 08' 19.4"W)

(G2020-011)

**\*307(P) ST. MARGARET'S BAY – NOTICE OF PROPOSED CHANGES**

Reference Chart: 4386

The Canadian Coast Guard proposes to permanently change the following aids to navigation:

LL #	Aid Name	Position	Proposed Changes
490	Dover Castle light and whistle buoy AT	44° 26' 42.5"N 063° 53' 33.5"W	Discontinue the whistle. The buoy and its light will remain.
491	Shag Bay Breakers light and bell buoy AT50	44° 28' 03.3"N 063° 50' 10.7"W	Discontinue the bell. The buoy and its light will remain.
5491.09	West Dover buoy AT68	44° 29' 48.3"N 063° 51' 50.8"W	Discontinue buoy.
5491.11	West Dover buoy AT72	44° 30' 00.3"N 063° 52' 03.7"W	Discontinue buoy.
5491.12	West Dover buoy AT73	44° 30' 05.3"N 063° 52' 03.7"W	Discontinue buoy.

Comments on this action are solicited from mariners and other interested parties by June 26, 2020, three months following the initial publication date of March 27, 2020. Following this date, this notice will be cancelled. Comments should be directed to the following:

Superintendent, Aids to Navigation  
Canadian Coast Guard  
P.O. Box 1000  
50 Discovery Drive  
Dartmouth, NS B2Y 3Z8  
Telephone: (902) 407-7623  
Email: [shannon.sellers@dfo-mpo.gc.ca](mailto:shannon.sellers@dfo-mpo.gc.ca)

Any objections raised must state the facts on which they are based and should include supporting information on safety, commerce and public benefit.

(F2020-005 to 009)

**\*308(P) LITTLE BAY ISLAND TO / À LEAGUE ROCK – LIGHT BUOY TO BE REPOSITIONED**

Reference Chart: 4592

The Canadian Coast Guard proposes to reposition the following aid to navigation:

LL #	Aid Name	Position	Proposed Changes
331.9	Black Rock Sunker light buoy DLB2	49° 38' 13.3"N 055° 46' 00.9"W	Reposition buoy to the following position: 49° 38' 11.3"N 055° 45' 55.7"W.

Comments on this action are solicited from mariners and other interested parties by June 26, 2020, three months following the initial publication date of March 27, 2020. Following this date, this notice will be cancelled. Comments should be directed to the following:

Superintendent, Aids to Navigation  
Canadian Coast Guard  
P.O. Box 1000  
50 Discovery Drive  
Dartmouth, NS B2Y 3Z8  
Telephone: (902) 407-7623  
Email: [shannon.sellers@dfo-mpo.gc.ca](mailto:shannon.sellers@dfo-mpo.gc.ca)

Any objections raised must state the facts on which they are based and should include supporting information on safety, commerce and public benefit.

(N2020-016)

**\*309(P) WHITE BAY AND / ET NOTRE DAME BAY – LIGHT BUOY TO BE DISCONTINUED**

Reference Chart: 4821

The Canadian Coast Guard proposes to permanently discontinue the following aid to navigation:

Mussel Rock Shoal West Cardinal light buoy DBB (LL 335.9) (49° 37' 39.6"N 055° 48' 19.5"W)

Comments on this action are solicited from mariners and other interested parties by June 26, 2020, three months following the initial publication date of March 27, 2020. Following this date, this notice will be cancelled. Comments should be directed to the following:

Superintendent, Aids to Navigation  
Canadian Coast Guard  
P.O. Box 1000  
50 Discovery Drive  
Dartmouth, NS B2Y 3Z8  
Telephone: (902) 407-7623  
Email: [shannon.sellers@dfo-mpo.gc.ca](mailto:shannon.sellers@dfo-mpo.gc.ca)

Any objections raised must state the facts on which they are based and should include supporting information on safety, commerce and public benefit.

(N2020-013)

MONTHLY NOTICES TO MARINERS  
EASTERN EDITION 03/2020  
SECTION 1 – GENERAL AND SAFETY INFORMATION

**\*310(P) CAPE TORMENTINE À / TO WEST POINT – NOTICE OF PROPOSED CHANGES**

Reference Chart: 4905

The Canadian Coast Guard proposes to permanently change the following aids to navigation:

Fixed Aids			
LL #	Aid Name	Position	Proposed Changes
1026	Canoe Gully Outer front range	46° 26' 53.5"N 064° 06' 20.5"W	Discontinue range light.
1027	Canoe Gully Outer rear range	105° 49' 175.6 m from front.	Discontinue range light.
1027.31	Abrams Village Wharf	46° 26' 25.9"N 064° 06' 48.4"W	Increase intensity of lantern and change flash characteristics to Fl 1 s, Ec 3 s.

Floating Aids			
LL #	Aid Name	Position	Proposed Changes
1023	Abram Village Fairway light buoy DH	46° 27' 18.7"N 064° 08' 25.9"W	Establish a fairway buoy equipped with a white lantern with flash characteristics: Mo (A) 6s
1023.3	Abrams Village light buoy DH8	46° 27' 02.7"N 064° 07' 13.0"W	Reposition buoy to the following position: 46° 27' 03.8"N 064° 07' 13.6"W.
1023.4	Abrams Village light buoy DH9	46° 27' 05.1"N 064° 07' 14.6"W	Reposition buoy to the following position: 46° 27' 03.6"N 064° 07' 11.3"W.
6023.14	Abrams Village buoy DH12	46° 26' 53.2"N 064° 07' 03.3"W	Reposition buoy to the following position: 46° 26' 53.3"N 064° 07' 03.2"W.
6023.17	Abrams Village buoy DH13	46° 26' 50.5"N 064° 06' 56.9"W	Reposition buoy to the following position: 46° 26' 50.2"N 064° 06' 57.4"W.
6023.22	Abrams Village buoy DH7	46° 27' 04.9"N 064° 07' 14.9"W	Establish an unlit port hand buoy.
6023.52	Abrams Village buoy DH16	46° 26' 37.1"N 064° 06' 53.3"W	Add a red lantern with flash characteristics: Fl 0.5 s, Ec 3.5 s.
6023.54	Abrams Village buoy DH15	46° 26' 43.3"N 064° 06' 53.3"W	Reposition buoy to the following position: 46° 26' 43.2"N 064° 06' 53.6"W.
6023.7	Abrams Village buoy DH5	46° 27' 07.2"N 064° 07' 21.6"W	Add a green lantern with flash characteristics: Fl 0.5 s, Ec 3.5 s. Reposition buoy to the following position: 46° 27' 06.7"N 064° 07' 20.8"W.

Comments on this action are solicited from mariners and other interested parties by June 26, 2020, three months following the initial publication date of March 27, 2020. Following this date, this notice will be cancelled. Comments should be directed to the following:

Superintendent, Aids to Navigation  
Canadian Coast Guard  
P.O. Box 1000  
50 Discovery Drive  
Dartmouth, NS B2Y 3Z8  
Telephone: (902) 407-7623  
Email: [shannon.sellers@dfo-mpo.gc.ca](mailto:shannon.sellers@dfo-mpo.gc.ca)

Any objections raised must state the facts on which they are based and should include supporting information on safety, commerce and public benefit.

(G2020-012P, 013P, 014)

MONTHLY NOTICES TO MARINERS  
EASTERN EDITION 03/2020  
SECTION 1 – GENERAL AND SAFETY INFORMATION

**\*311(P) ENTRÉE À / ENTRANCE TO MIRAMICHI RIVER – NOTICE OF PROPOSED CHANGES**

Reference Chart: 4911

The Canadian Coast Guard proposes to permanently change the following aids to navigation:

LL #	Aid Name	Position	Proposed Changes
1168	Horse Shoe Bar front range	47° 09' 12.1"N 065° 02' 24.3"W	Establish a front range equipped with a white lantern with flash characteristics Fl 2 s, Ec 2 s and a red daymark with a black stripe.
1169	Horse Shoe Bar rear range	47° 09' 22.0"N 065° 02' 09.7"W	Establish a rear range equipped with a white lantern with flash characteristics Fl 2 s, Ec 2 s and a red daymark with a black stripe.
1170.5	Fox Island South front range	47° 05' 14.5"N 064° 58' 42.0"W	Change flash characteristics to Fl 2 s, Ec 2s. Change daymark colour to red with white stripe and increase size.
1170.6	Fox Island South rear range	248° 28' 214.6 m from front.	Change daymark colour to red with white stripe and increase size.
1179.5	Portage Island South	47° 09' 20.7"N 065° 02' 07.6"W	Establish a leading light equipped with a fixed red lantern and a red-white-red daymark, in operation 24 h.
6173.61	Portage Island Reach 25 Daybeacon 1	47° 09' 28.8"N 065° 02' 02.4"W	Discontinue aid.
6173.71	Portage Island Reach 25 Daybeacon 2	47° 09' 38.8"N 065° 02' 16.3"W	Discontinue aid.
6180.61	Portage Island Reach 23B Daybeacon 1	47° 09' 28.8"N 065° 02' 02.4"W	Discontinue aid.
6180.71	Portage Island Reach 23B Daybeacon 2	47° 09' 12.1"N 065° 02' 24.5"W	Discontinue aid.

Comments on this action are solicited from mariners and other interested parties by June 26, 2020, three months following the initial publication date of March 27, 2020. Following this date, this notice will be cancelled. Comments should be directed to the following:

Superintendent, Aids to Navigation  
Canadian Coast Guard  
P.O. Box 1000  
50 Discovery Drive  
Dartmouth, NS B2Y 3Z8  
Telephone: (902) 407-7623  
Email: [shannon.sellers@dfo-mpo.gc.ca](mailto:shannon.sellers@dfo-mpo.gc.ca)

Any objections raised must state the facts on which they are based and should include supporting information on safety, commerce and public benefit.

(G2020-006)

**\*312(P) ST. LEWIS SOUND AND / ET INLET – LIGHT BUOY TO BE DISCONTINUED**

Reference Chart: 5031

The Canadian Coast Guard proposes to permanently discontinue the following aid to navigation:

Mary's Harbour (Inner Harbour) light buoy NMH5 (LL 276.772) (52° 18' 35.5"N 055° 50' 11.4"W)

Comments on this action are solicited from mariners and other interested parties by June 26, 2020, three months following the initial publication date of March 27, 2020. Following this date, this notice will be cancelled. Comments should be directed to the following:

Superintendent, Aids to Navigation  
Canadian Coast Guard  
P.O. Box 1000  
50 Discovery Drive  
Dartmouth, NS B2Y 3Z8  
Telephone: (902) 407-7623  
Email: [shannon.sellers@dfo-mpo.gc.ca](mailto:shannon.sellers@dfo-mpo.gc.ca)

Any objections raised must state the facts on which they are based and should include supporting information on safety, commerce and public benefit.

(N2020-014)

**\*313(P) ST. LEWIS SOUND AND / ET INLET – LIGHT BUOYS TO BE ESTABLISHED**

Reference Chart: 5031

The Canadian Coast Guard proposes to establish the following aids to navigation:

Fox Harbour light buoy NF1 (LL 276.3): (52° 21' 37.2"N 055° 41' 49.6"W)  
Shag Rocks light buoy NMS2 (LL 276.55): (52° 20' 26.0"N 055° 44' 32.2"W)

Comments on this action are solicited from mariners and other interested parties by June 26, 2020, three months following the initial publication date of March 27, 2020. Following this date, this notice will be cancelled. Comments should be directed to the following:

Superintendent, Aids to Navigation  
Canadian Coast Guard  
P.O. Box 1000  
50 Discovery Drive  
Dartmouth, NS B2Y 3Z8  
Telephone: (902) 407-7623  
Email: [shannon.sellers@dfo-mpo.gc.ca](mailto:shannon.sellers@dfo-mpo.gc.ca)

Any objections raised must state the facts on which they are based and should include supporting information on safety, commerce and public benefit.

(N2020-018, 019)

**\*314(T) TORONTO HARBOUR – CONSTRUCTION OPERATIONS**

Reference: Notice 209(T)/20 is now cancelled.

Reference Chart: 2085

Construction is taking place at Ashbridge's Bay and consists of the construction of two breakwaters and of a landform. A variety of equipment will be used, including tug boats and barges. Temporary aids to navigation will be placed prior to and during construction. The operations are scheduled to take at the following positions:

**Breakwater construction operations**

43° 39' 20.7"N 079° 18' 48.1"W

Phase 1: 2020-04-01 through 2020-12-31

Phase 2: 2021-04-01 through 2021-12-31

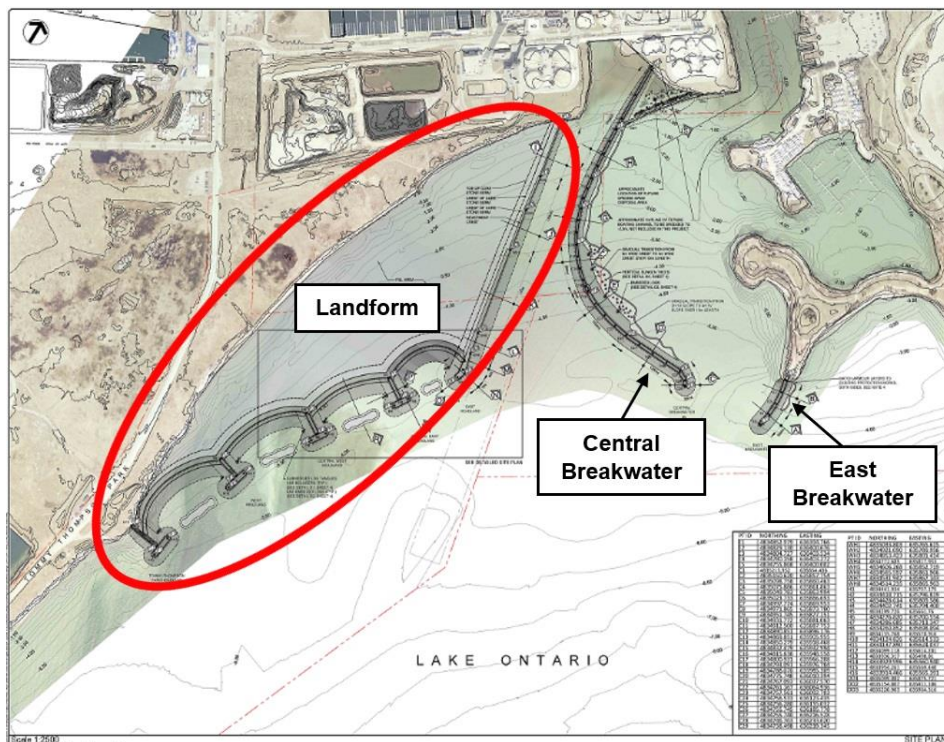
Phase 3: 2022-04-01 through 2022-12-31

**Landform construction operations**

43° 39' 01.4"N 079° 19' 01.9"W

Implementation of the shoreline infill area is expected to take approximately five years.

Mariners are requested to keep out of the construction zone.



MONTHLY NOTICES TO MARINERS  
EASTERN EDITION 03/2020  
SECTION 2 – CHART CORRECTIONS

---

**1234 - Cap de la Tête au Chien au/to Cap aux Oies - New Edition - 04-NOV-2011 - NAD 1983**

13-MAR-2020

LNMD. 31-MAY-2019

Delete Ru against wharf  
(See Chart No. 1, F33)  
This notice affects Electronic Navigational Chart: CA379029  
47°48'20.6"N 069°53'52.9"W  
*DFO(6410296-01)*

Add Ru against wharf  
(See Chart No. 1, F33)  
This notice affects Electronic Navigational Chart: CA379029  
47°33'48.2"N 069°52'30.1"W  
*DFO(6410296-02)*

Delete Ru against wharf  
(See Chart No. 1, F33)  
This notice affects Electronic Navigational Chart: CA379029  
47°33'32.9"N 070°12'10.7"W  
*DFO(6410296-03)*

**1236 - Rimouski - New Edition - 26-OCT-2012 - NAD 1983**

13-MAR-2020

LNMD. 02-AUG-2019

Affix patch  
Download Patch - <ftp://ftp.dfo-mpo.gc.ca/patches/pa1236-20200211.pdf>  
This notice affects Electronic Navigational Chart: CA579041  
48°28'45.0"N 068°30'54.0"W  
*DFO(6410292-01)*

**1314 - Donnacona à/to Batiscan - New Edition - 15-MAR-2019 - NAD 1983**

06-MAR-2020

LNMD. 28-JUN-2019

Replace red starboard hand lighted pillar buoy FIR, marked Q48 with  
red starboard hand lighted spar buoy FIR, marked Q48  
(See Chart No. 1, Q24, Qf)  
This notice affects Electronic Navigational Chart: CA479017  
46°38'26.5"N 071°42'48.4"W  
*(Q2019143) LL(1984) DFO(6410272-01)*

Replace green port hand lighted pillar buoy FIG, marked Q57 with  
green port hand lighted spar buoy FIG, marked Q57  
(See Chart No. 1, Q24, Qg)  
This notice affects Electronic Navigational Chart: CA479017  
46°40'03.9"N 071°48'59.4"W  
*(Q2019145) LL(1992) DFO(6410274-01)*

Replace green port hand lighted pillar buoy QG, marked Q61 with  
green port hand lighted spar buoy QG, marked Q61  
(See Chart No. 1, Q24, Qg)  
This notice affects Electronic Navigational Chart: CA479017  
46°40'37.5"N 071°50'58.2"W  
*(Q2019146) LL(1993) DFO(6410275-01)*

Replace red starboard hand lighted pillar buoy FIR, marked Q68 with  
red starboard hand lighted spar buoy FIR, marked Q68  
(See Chart No. 1, Q24, Qf)  
This notice affects Electronic Navigational Chart: CA479017  
46°39'10.1"N 071°54'13.1"W  
*(Q2019147) LL(2001.1) DFO(6410276-01)*

Replace red starboard hand lighted pillar buoy FIR, marked Q76 with  
red starboard hand lighted spar buoy FIR, marked Q76  
(See Chart No. 1, Q24, Qf)  
This notice affects Electronic Navigational Chart: CA479017  
46°37'35.2"N 071°56'41.5"W  
*(Q2019149) LL(2008.1) DFO(6410278-01)*



MONTHLY NOTICES TO MARINERS  
EASTERN EDITION 03/2020  
SECTION 2 – CHART CORRECTIONS

---

Replace	green port hand lighted pillar buoy FIG, marked Q77 with green port hand lighted spar buoy FIG, marked Q77 (See Chart No. 1, Q24, Qg) This notice affects Electronic Navigational Chart: CA479017	46°37'25.0"N 071°56'42.4"W  (Q2019150) LL(2008) DFO(6410279-01)
Replace	red starboard hand lighted pillar buoy FIR, marked D4 with red starboard hand lighted spar buoy FIR, marked D4 (See Chart No. 1, Q24, Qf) This notice affects Electronic Navigational Chart: CA479017	46°35'30.2"N 072°00'25.7"W  (Q2019151) LL(2014) DFO(6410280-01)
Replace	red starboard hand lighted pillar buoy QR, marked D18 with red starboard hand lighted spar buoy QR, marked D18 (See Chart No. 1, Q24, Qf) This notice affects Electronic Navigational Chart: CA479017	46°34'09.7"N 072°03'29.3"W  (Q2019152) LL(2018.5) DFO(6410281-01)
Replace	red starboard hand lighted pillar buoy QR, marked D24 with red starboard hand lighted spar buoy QR, marked D24 (See Chart No. 1, Q24, Qf) This notice affects Electronic Navigational Chart: CA479017	46°33'56.1"N 072°04'45.6"W  (Q2019153) LL(2022) DFO(6410282-01)
<b>1315 - Québec à/to Donnacona - New Edition - 24-MAY-2019 - NAD 1983</b>		
06-MAR-2020		
Replace	green port hand lighted pillar buoy FIG, marked Q19 with green port hand lighted spar buoy FIG, marked Q19 (See Chart No. 1, Q24, Qg) This notice affects Electronic Navigational Chart: CA479020	46°42'41.2"N 071°26'41.8"W  (Q2019141) LL(1967) DFO(6410270-01)
Replace	red starboard hand lighted pillar buoy FIR, marked Q48 with red starboard hand lighted spar buoy FIR, marked Q48 (See Chart No. 1, Q24, Qf) This notice affects Electronic Navigational Chart: CA479017	46°38'26.5"N 071°42'48.4"W  (Q2019143) LL(1984) DFO(6410272-01)
<b>1429 - Canal de la Rive Sud - New Chart - 09-APR-2010 - NAD 1983</b>		
27-MAR-2020		
Add	private light (Priv)F G (See Chart No. 1, P1) This notice affects Electronic Navigational Chart: CA579227	LNMD. 08-NOV-2019 45°28'06.3"N 073°30'14.8"W  (Q2019139) LL(0.05) DFO(6410254-01)
Add	private light F G(Priv) (See Chart No. 1, P1) This notice affects Electronic Navigational Chart: CA579227	45°28'04.6"N 073°30'14.0"W  (Q2019140) LL(0.06) DFO(6410255-01)
<b>1430 - Lac Saint-Louis - New Edition - 23-NOV-2018 - NAD 1983</b>		
20-MAR-2020		
Affix	patch Download Patch - <a href="ftp://ftp.dfo-mpo.gc.ca/patches/pa1430-20200224.pdf">ftp://ftp.dfo-mpo.gc.ca/patches/pa1430-20200224.pdf</a> This notice affects Electronic Navigational Chart: CA479228	LNMD. 19-JUL-2019 45°19'04.7"N 073°52'35.7"W  DFO(6410262-01)

MONTHLY NOTICES TO MARINERS  
EASTERN EDITION 03/2020  
SECTION 2 – CHART CORRECTIONS

---

Add underwater rock of unknown depth, dangerous to surface navigation, 45°19'53.2"N 073°56'05.1"W  
(Rep 2019)  
(See Chart No. 1, K13, I3.2)  
This notice affects Electronic Navigational Chart: CA479228  
DFO(6410262-02)

Add underwater rock of unknown depth, dangerous to surface navigation, 45°19'48.0"N 073°56'00.0"W  
(Rep 2019)  
(See Chart No. 1, K13, I3.2)  
This notice affects Electronic Navigational Chart: CA479228  
DFO(6410262-03)

**1430 - Rapides de Vaudreuil - New Edition - 23-NOV-2018 - NAD 1983**  
20-MAR-2020

Affix patch 45°22'54.9"N 074°00'12.8"W  
Download Patch - <ftp://ftp.dfo-mpo.gc.ca/patches/pa1430-20200225.pdf>  
This notice affects Electronic Navigational Chart: CA579229  
DFO(6410262-04)

**2274 - Cape Hurd to/à Tobermory and/et Cove Island - New Edition - 08-NOV-2019 - World Geodetic System 1984**  
20-MAR-2020

Affix patch 45°17'17.0"N 081°43'08.0"W  
Download Patch - [ftp://ftp.dfo-mpo.gc.ca/patches/2274PA\\_20200320.pdf](ftp://ftp.dfo-mpo.gc.ca/patches/2274PA_20200320.pdf)  
DFO(6604614-01)

**4000 - Gulf of Maine to/à Baffin Bay / Baie de Baffin - New Edition - 25-JUL-2003 - NAD 1983**  
06-MAR-2020

Add fish haven with depth of 18 metres over an artificial feature 40°36'44.0"N 072°31'39.0"W  
(See Chart No. 1, K46.2)  
(USCG:01/2020) DFO(6308933-03)

**4001 - Gulf of Maine to Strait of Belle Isle / au Detroit de Belle Isle - New Edition - 01-DEC-1995 - NAD 1983**  
06-MAR-2020

Add fish haven with depth of 18 metres over an artificial feature 40°36'44.0"N 072°31'39.0"W  
(See Chart No. 1, K46.2)  
(USCG:01/2020) DFO(6308933-03)

Add private yellow ODAS/SADO lighted pillar FI Y, (Priv) 40°50'29.0"N 070°14'56.2"W  
(See Chart No. 1, Q58)  
(USCG:01/2020) DFO(6308933-04)

**4002 - Golfe du Saint-Laurent / Gulf of St. Lawrence - New Edition - 30-OCT-2015 - NAD 1983**  
27-MAR-2020

Amend FI 12M to read FI 13M against light 49°51'50.6"N 064°31'23.7"W  
(See Chart No. 1, P16)  
This notice affects Electronic Navigational Chart: CA179245, CA279044, CA479152  
(Q2019186) LL(1523) DFO(6410299-01)

**4003 - Cape Breton to / à Cape Cod - New Edition - 21-MAR-2003 - NAD 1983**  
06-MAR-2020

Amend FIR19M to read FI R 14M against light 43°39'29.0"N 070°01'36.0"W  
(See Chart No. 1, P16)  
(USCG:01/2020) DFO(6308933-02)

MONTHLY NOTICES TO MARINERS  
EASTERN EDITION 03/2020  
SECTION 2 – CHART CORRECTIONS

---

Add	private yellow ODAS/SADO lighted pillar FI Y, (Priv) (See Chart No. 1, Q58)	40°50'29.0"N 070°14'56.2"W  (USCG:01/2020) DFO(6308933-04)
20-MAR-2020		LNM/D. 06-MAR-2020
Amend	depth of 95 fathoms to read 97 fathoms against subsurface Ocean Data Acquisition System ODAS/SADO (See Chart No. 1, L25) This notice affects Electronic Navigational Chart: CA276206	43°18'00.0"N 067°29'56.0"W  DFO(6308935-01)
Amend	depth of 785 fathoms to read 790 fathoms against subsurface Ocean Data Acquisition System ODAS/SADO (See Chart No. 1, L25)	42°02'36.0"N 065°21'42.0"W  DFO(6308935-02)
Amend	depth of 48 fathoms to read 51 fathoms against subsurface Ocean Data Acquisition System ODAS/SADO (See Chart No. 1, L25) This notice affects Electronic Navigational Chart: CA176140, CA276801	43°29'47.4"N 062°52'09.1"W  DFO(6308935-03)
Amend	depth of 49 fathoms to read 56 fathoms against subsurface Ocean Data Acquisition System ODAS/SADO (See Chart No. 1, L25) This notice affects Electronic Navigational Chart: CA276206	43°00'05.1"N 065°33'36.0"W  DFO(6308935-04)
<b>4006 - Newfoundland and Labrador/Terre-Neuve-et-Labrador to Bermuda / aux Bermudes - New Edition - 08-AUG-2003 - NAD 1983</b>		
06-MAR-2020		LNM/D. 22-NOV-2019
Reposition	yellow ODAS/SADO lighted super-buoy, marked 41002 (See Chart No. 1, Q58)	from 31°51'31.0"N 074°50'25.0"W to 31°53'12.0"N 074°55'17.0"W (NGA:04/2020) DFO(6308933-01)
Add	fish haven with depth of 18 metres over an artificial feature (See Chart No. 1, K46.2)	40°36'44.0"N 072°31'39.0"W  (USCG:01/2020) DFO(6308933-03)
Add	private yellow ODAS/SADO lighted pillar FI Y, (Priv) (See Chart No. 1, Q58)	40°50'29.0"N 070°14'56.2"W  (USCG:01/2020) DFO(6308933-04)
<b>4011 - Approaches to / Approches à Bay of Fundy / Baie de Fundy - New Edition - 03-JAN-2003 - NAD 1983</b>		
20-MAR-2020		LNM/D. 01-NOV-2019
Amend	depth of 173 metres to read 177 metres against subsurface Ocean Data Acquisition System ODAS/SADO (See Chart No. 1, L25) This notice affects Electronic Navigational Chart: CA276206	43°18'00.0"N 067°29'56.0"W  DFO(6308935-01)
Amend	depth of 89 metres to read 103 metres against subsurface Ocean Data Acquisition System ODAS/SADO (See Chart No. 1, L25) This notice affects Electronic Navigational Chart: CA276206	43°00'09.0"N 065°33'53.0"W  DFO(6308935-04)

MONTHLY NOTICES TO MARINERS  
EASTERN EDITION 03/2020  
SECTION 2 – CHART CORRECTIONS

---

**4012 - Yarmouth to / à Halifax - New Edition - 14-FEB-2003 - NAD 1983**

20-MAR-2020

LNM/D. 08-NOV-2019

Amend depth of 87 metres to read 94 metres against subsurface Ocean Data Acquisition System ODAS/SADO 43°29'47.4"N 062°52'09.1"W  
(See Chart No. 1, L25)  
This notice affects Electronic Navigational Chart: CA176140, CA276801  
*DFO(6308935-03)*

Amend depth of 89 metres to read 103 metres against subsurface Ocean Data Acquisition System ODAS/SADO 43°00'09.0"N 065°33'53.0"W  
(See Chart No. 1, L25)  
This notice affects Electronic Navigational Chart: CA276206  
*DFO(6308935-04)*

27-MAR-2020

LNM/D. 20-MAR-2020

Amend FI 12s24m8M to read LFI 12s24m8M against light 44°13'47.0"N 064°16'31.0"W  
(See Chart No. 1, P16)  
This notice affects Electronic Navigational Chart: CA276801, CA476664  
*(F2020003) LL(432) DFO(6308940-01)*

**4021 - Pointe Amour à / to Cape Whittle et / and Cape George - New Edition - 01-NOV-2002 - NAD 1983**

06-MAR-2020

LNM/D. 14-FEB-2020

Amend Iso R 2s38ft to read Iso 2s42ft7M against light 51°19'18.0"N 057°50'36.0"W  
(See Chart No. 1, P16)  
This notice affects Electronic Navigational Chart: CA276138, CA479249  
*(Q2019176) LL(1539.13) DFO(6410266-01)*

27-MAR-2020

LNM/D. 06-MAR-2020

Delete depth of 6 fathoms, 5 feet 50°41'35.4"N 057°26'06.8"W  
(See Chart No. 1, I10)  
This notice affects Electronic Navigational Chart: CA276138  
*DFO(6308865-01)*

Add depth of 6 fathoms, 2 feet 50°41'28.0"N 057°26'30.1"W  
(See Chart No. 1, I10)  
This notice affects Electronic Navigational Chart: CA276138  
*DFO(6308865-02)*

**4024 - Baie des Chaleurs/Chaleur Bay aux/to Îles de la Madeleine - New Edition - 06-MAR-2015 - NAD 1983**

20-MAR-2020

LNM/D. 15-NOV-2019

Amend 2 Lts F R to read F R against light 47°33'22.9"N 061°33'44.4"W  
(See Chart No. 1, P16)  
This notice affects Electronic Navigational Chart: CA279075  
*DFO(6410317-02)*

**4026 - Havre Saint-Pierre et/and Cap des Rosiers à/to Pointe des Monts - New Edition - 23-MAY-2014 - NAD 1983**

27-MAR-2020

LNM/D. 12-JUL-2019

Amend FI 5s28m12M to read FI 5s28m13M against light 49°51'50.6"N 064°31'23.7"W  
(See Chart No. 1, P16)  
This notice affects Electronic Navigational Chart: CA179245, CA279044, CA479152  
*(Q2019186) LL(1523) DFO(6410299-01)*

MONTHLY NOTICES TO MARINERS  
EASTERN EDITION 03/2020  
SECTION 2 – CHART CORRECTIONS

---

**4115 - Passamaquoddy Bay and / et St. Croix River - New Edition - 24-FEB-2012 - World Geodetic System 1984**

20-MAR-2020

LNM/D. 23-FEB-2018

Replace	depth of 2.5 metres with depth of 0.7 metres (See Chart No. 1, I10) This notice affects Electronic Navigational Chart: CA476035	45°01'05.8"N 066°55'27.8"W  <i>DFO(6308895-02)</i>
Delete	depth of 0.3 metres (See Chart No. 1, I10) This notice affects Electronic Navigational Chart: CA476035	45°01'09.0"N 066°55'41.4"W  <i>DFO(6308895-04)</i>
Add	drying height of 0.1 metres (See Chart No. 1, I15) This notice affects Electronic Navigational Chart: CA476035	45°01'08.9"N 066°55'43.2"W  <i>DFO(6308895-05)</i>
Replace	depth of 0.8 metres with depth of 0.5 metres (See Chart No. 1, I10) This notice affects Electronic Navigational Chart: CA476035	45°01'16.1"N 066°55'56.0"W  <i>DFO(6308895-06)</i>
Add	depth of 0.9 metres (See Chart No. 1, I10) This notice affects Electronic Navigational Chart: CA476035	45°01'22.0"N 066°55'36.1"W  <i>DFO(6308895-08)</i>
Delete	depth of 2.4 metres (See Chart No. 1, I10) This notice affects Electronic Navigational Chart: CA476035	45°01'16.8"N 066°55'19.4"W  <i>DFO(6308895-09)</i>
Add	drying height of 0.3 metres (See Chart No. 1, I15) This notice affects Electronic Navigational Chart: CA476035	45°01'20.0"N 066°55'16.7"W  <i>DFO(6308895-10)</i>
Add	depth of 1.4 metres (See Chart No. 1, I10) This notice affects Electronic Navigational Chart: CA476035	45°01'26.3"N 066°54'55.0"W  <i>DFO(6308895-11)</i>
Delete	depth of 3.8 metres (See Chart No. 1, I10) This notice affects Electronic Navigational Chart: CA476035	45°01'35.0"N 066°55'29.0"W  <i>DFO(6308895-12)</i>
Add	depth of 0.9 metres (See Chart No. 1, I10) This notice affects Electronic Navigational Chart: CA476035	45°01'37.2"N 066°55'27.5"W  <i>DFO(6308895-13)</i>
Add	depth of 0.8 metres (See Chart No. 1, I10) This notice affects Electronic Navigational Chart: CA476035	45°01'44.3"N 066°56'13.9"W  <i>DFO(6308895-14)</i>

MONTHLY NOTICES TO MARINERS  
EASTERN EDITION 03/2020  
SECTION 2 – CHART CORRECTIONS

---

Delete	depth of 7.3 metres (See Chart No. 1, I10) This notice affects Electronic Navigational Chart: CA476035	45°02'27.0"N 066°56'20.2"W  <i>DFO(6308895-15)</i>
Add	depth of 4 metres (See Chart No. 1, I10) This notice affects Electronic Navigational Chart: CA476035	45°02'27.3"N 066°56'17.5"W  <i>DFO(6308895-16)</i>
<b>4124 - Letete Passage, Letang Harbour and / et Blacks Harbour - New Edition - 07-APR-2000 - NAD 1983</b>		
	20-MAR-2020	LNM/D. 05-FEB-2016
Affix	patch Download Patch - <a href="ftp://ftp.dfo-mpo.gc.ca/patches/4124v2PA3_Deer_Island_Shoals.pdf">ftp://ftp.dfo-mpo.gc.ca/patches/4124v2PA3_Deer_Island_Shoals.pdf</a> This notice affects Electronic Navigational Chart: CA576022	45°01'39.8"N 066°55'24.5"W  <i>DFO(6308895-01)</i>
<b>4141 - Saint John to / à Grand Bay including / y compris Kennebecasis River - Sheet / Feuille A-B - New Edition - 30-OCT-2009 - NAD 1983</b>		
	13-MAR-2020	LNM/D. 15-NOV-2019
Amend	LFIG to read FI G against light (See Chart No. 1, P16)	45°16'56.7"N 066°07'16.8"W  <i>(F2020001) LL(116) DFO(6308924-01)</i>
<b>4236 - Continuation A - New Edition - 13-JUL-2001 - NAD 1983</b>		
	13-MAR-2020	LNM/D. 06-DEC-2019
Reposition	green port hand spar buoy, marked YM23 (See Chart No. 1, Qg) This notice affects Electronic Navigational Chart: CA476089	from 44°48'23.5"N 062°51'31.8"W to 44°48'24.1"N 062°51'36.0"W  <i>(F2020002) DFO(6308939-01)</i>
<b>4320 - Egg Island to / à West Ironbound Island - New Edition - 26-SEP-1997 - NAD 1983</b>		
	27-MAR-2020	LNM/D. 06-DEC-2019
Add	depth of 1 fathom, 2 feet (See Chart No. 1, I10) This notice affects Electronic Navigational Chart: CA476199	44°26'17.0"N 064°19'23.0"W  <i>DFO(6308903-02)</i>
Delete	depth of 8 fathoms, 4 feet (See Chart No. 1, I10)	44°26'57.9"N 064°17'20.1"W  <i>DFO(6308903-03)</i>
Add	depth of 1 fathom, 3 feet (See Chart No. 1, I10) This notice affects Electronic Navigational Chart: CA476199	44°26'58.7"N 064°17'15.7"W  <i>DFO(6308903-04)</i>
Amend	FI 12s80ft8M to read LFI 12s77ft8M against light (See Chart No. 1, P16) This notice affects Electronic Navigational Chart: CA276801, CA476664	44°13'44.2"N 064°16'25.5"W  <i>(F2020003) LL(432) DFO(6308940-01)</i>

MONTHLY NOTICES TO MARINERS  
EASTERN EDITION 03/2020  
SECTION 2 – CHART CORRECTIONS

---

**4381 - Chester Harbour - New Edition - 30-AUG-2019 - NAD 1983**

27-MAR-2020

Amend	FI R 31m3M to read FI R 31m against light (See Chart No. 1, P16) This notice affects Electronic Navigational Chart: CA576200	44°30'53.7"N 064°13'57.2"W  <i>LL(456) DFO(6308903-12)</i>
-------	--	--

**4381 - Mahone Bay - New Edition - 30-AUG-2019 - NAD 1983**

27-MAR-2020

Delete	depth of 3.5 metres (See Chart No. 1, I10) This notice affects Electronic Navigational Chart: CA476199	44°26'18.2"N 064°19'23.4"W  <i>DFO(6308903-01)</i>
--------	--	--

Add	depth of 2.5 metres (See Chart No. 1, I10) This notice affects Electronic Navigational Chart: CA476199	44°26'17.0"N 064°19'23.0"W  <i>DFO(6308903-02)</i>
-----	--	--

Add	depth of 2.6 metres (See Chart No. 1, I10) This notice affects Electronic Navigational Chart: CA476199	44°26'58.7"N 064°17'15.7"W  <i>DFO(6308903-04)</i>
-----	--	--

Delete	depth of 7.1 metres (See Chart No. 1, I10) This notice affects Electronic Navigational Chart: CA476199	44°26'19.2"N 064°20'17.0"W  <i>DFO(6308903-05)</i>
--------	--	--

Add	depth of 5.4 metres (See Chart No. 1, I10) This notice affects Electronic Navigational Chart: CA476199	44°26'18.5"N 064°20'17.3"W  <i>DFO(6308903-06)</i>
-----	--	--

Amend	FI to read FI 10m7M against light (See Chart No. 1, P16) This notice affects Electronic Navigational Chart: CA476199	44°26'09.8"N 064°20'15.3"W  <i>LL(451) DFO(6308903-07)</i>
-------	--	--

Delete	depth of 11.8 metres (See Chart No. 1, I10) This notice affects Electronic Navigational Chart: CA476199	44°28'16.9"N 064°17'16.0"W  <i>DFO(6308903-09)</i>
--------	---	--

Add	depth of 11.6 metres (See Chart No. 1, I10) This notice affects Electronic Navigational Chart: CA476199	44°28'13.7"N 064°17'11.5"W  <i>DFO(6308903-10)</i>
-----	---	--

Amend	FI R 4s31m3M to read FI R 31m3M against light (See Chart No. 1, P16) This notice affects Electronic Navigational Chart: CA476199	44°30'53.7"N 064°13'57.2"W  <i>LL(456) DFO(6308903-11)</i>
-------	--	--

MONTHLY NOTICES TO MARINERS  
EASTERN EDITION 03/2020  
SECTION 2 – CHART CORRECTIONS

---

**4381 - Mahone Harbour - New Edition - 30-AUG-2019 - NAD 1983**

27-MAR-2020

Amend	FI 10m7M to read FI against light (See Chart No. 1, P16) This notice affects Electronic Navigational Chart: CA576201	44°26'09.8"N 064°20'15.3"W  <i>DFO(6308903-08)</i>
-------	--	--

**4384 - Pearl Island to / à Cape La Have - New Edition - 10-JAN-2003 - NAD 1983**

27-MAR-2020

Amend	FI 12s24m8M to read LFI 12s24m8M against light (See Chart No. 1, P16) This notice affects Electronic Navigational Chart: CA276801, CA476664	LNMD. 01-DEC-2017 44°13'43.6"N 064°16'27.7"W  <i>(F2020003) LL(432) DFO(6308940-01)</i>
-------	---	--

**4386 - Head Harbour - New Edition - 16-JUL-2004 - NAD 1983**

20-MAR-2020

Delete	depth of 0.6 metres (See Chart No. 1, I10)	LNMD. 10-JAN-2020 44°39'34.8"N 063°54'59.5"W  <i>DFO(6308928-01)</i>
Add	depth of 0.1 metres (See Chart No. 1, I10)	44°39'34.2"N 063°54'58.8"W  <i>DFO(6308928-02)</i>
Delete	depth of 0.6 metres (See Chart No. 1, I10)	44°39'31.2"N 063°54'52.8"W  <i>DFO(6308928-03)</i>
Add	drying height of 0.2 metres (See Chart No. 1, I15)	44°39'31.2"N 063°54'52.8"W  <i>DFO(6308928-04)</i>

**4394 - LaHave River: West Ironbound Island to / à Riverport - New Edition - 26-JUL-2002 - NAD 1983**

27-MAR-2020

Amend	FI 12s80ft8M to read LFI 12s77ft8M against light (See Chart No. 1, P16) This notice affects Electronic Navigational Chart: CA276801, CA476664	LNMD. 25-AUG-2017 44°13'43.6"N 064°16'27.5"W  <i>(F2020003) LL(432) DFO(6308940-01)</i>
-------	---	--

**4402 - Wallace Harbour - New Edition - 25-DEC-1998 - NAD 1983**

06-MAR-2020

Add	depth of 10 feet (See Chart No. 1, I10) This notice affects Electronic Navigational Chart: CA376161	LNMD. 27-OCT-2017 45°48'06.5"N 063°20'08.6"W  <i>DFO(6308892-01)</i>
Delete	depth of 12 feet (See Chart No. 1, I10) This notice affects Electronic Navigational Chart: CA376161	45°48'09.5"N 063°21'38.3"W  <i>DFO(6308892-03)</i>
Add	depth of 8 feet (See Chart No. 1, I10) This notice affects Electronic Navigational Chart: CA376161	45°48'10.4"N 063°21'37.0"W  <i>DFO(6308892-04)</i>



MONTHLY NOTICES TO MARINERS  
EASTERN EDITION 03/2020  
SECTION 2 – CHART CORRECTIONS

---

Delete	depth of 12 feet (See Chart No. 1, I10)	45°49'01.7"N 063°25'14.2"W  <i>DFO(6308892-05)</i>
Add	depth of 4 feet (See Chart No. 1, I10) This notice affects Electronic Navigational Chart: CA376161	45°49'02.7"N 063°25'15.8"W  <i>DFO(6308892-06)</i>
Add	depth of 18 feet (See Chart No. 1, I10)	45°50'23.3"N 063°25'38.5"W  <i>DFO(6308892-07)</i>
Add	depth of 5 feet (See Chart No. 1, I10)	45°49'08.4"N 063°25'45.8"W  <i>DFO(6308892-08)</i>
Add	depth of 12 feet (See Chart No. 1, I10)	45°48'57.3"N 063°27'25.6"W  <i>DFO(6308892-09)</i>
Add	depth of 12 feet (See Chart No. 1, I10) This notice affects Electronic Navigational Chart: CA376161	45°48'54.8"N 063°26'45.9"W  <i>DFO(6308892-10)</i>
Delete	depth of 26 feet (See Chart No. 1, I10)	45°48'55.5"N 063°26'45.7"W  <i>DFO(6308892-11)</i>
Delete	depth of 18 feet (See Chart No. 1, I10)	45°48'53.7"N 063°26'46.3"W  <i>DFO(6308892-12)</i>
<b>4405 - Pictou Island to / aux Tryon Shoals - New Edition - 21-FEB-2003 - NAD 1983</b>		
06-MAR-2020		LNMD. 14-FEB-2020
Add	depth of 2 feet (See Chart No. 1, I10) This notice affects Electronic Navigational Chart: CA376178	46°10'33.5"N 063°31'23.3"W  <i>DFO(6308890-20)</i>
Add	depth of 10 feet (See Chart No. 1, I10) This notice affects Electronic Navigational Chart: CA376161	45°48'06.5"N 063°20'08.6"W  <i>DFO(6308892-01)</i>
Delete	depth of 12 feet (See Chart No. 1, I10) This notice affects Electronic Navigational Chart: CA376161	45°48'07.2"N 063°21'39.2"W  <i>DFO(6308892-03)</i>
Add	depth of 8 feet (See Chart No. 1, I10) This notice affects Electronic Navigational Chart: CA376161	45°48'10.4"N 063°21'37.0"W  <i>DFO(6308892-04)</i>

MONTHLY NOTICES TO MARINERS  
EASTERN EDITION 03/2020  
SECTION 2 – CHART CORRECTIONS

---

Add	depth of 4 feet (See Chart No. 1, I10) This notice affects Electronic Navigational Chart: CA376161	45°49'02.7"N 063°25'15.8"W  <i>DFO(6308892-06)</i>
Add	depth of 12 feet (See Chart No. 1, I10) This notice affects Electronic Navigational Chart: CA376161	45°48'54.8"N 063°26'45.9"W  <i>DFO(6308892-10)</i>
Delete	depth of 26 feet (See Chart No. 1, I10) This notice affects Electronic Navigational Chart: CA376161	45°48'53.2"N 063°26'44.2"W  <i>DFO(6308892-13)</i>
Add	depth of 3 feet (See Chart No. 1, I10) This notice affects Electronic Navigational Chart: CA376161	45°52'25.0"N 063°26'32.6"W  <i>DFO(6308897-01)</i>
Add	depth of 2 feet (See Chart No. 1, I10) This notice affects Electronic Navigational Chart: CA376161	45°47'45.7"N 063°02'35.0"W  <i>DFO(6308897-02)</i>
Add	depth of 2 feet (See Chart No. 1, I10) This notice affects Electronic Navigational Chart: CA376161	45°47'18.0"N 062°58'43.1"W  <i>DFO(6308897-03)</i>
Add	depth of 4 feet (See Chart No. 1, I10) This notice affects Electronic Navigational Chart: CA376161	45°47'26.5"N 062°57'59.6"W  <i>DFO(6308897-04)</i>
Add	rock awash at chart datum (See Chart No. 1, K12) This notice affects Electronic Navigational Chart: CA376161	45°46'55.7"N 062°56'20.8"W  <i>DFO(6308897-05)</i>
Add	depth of 15 feet (See Chart No. 1, I10) This notice affects Electronic Navigational Chart: CA376161	45°46'54.4"N 062°54'58.4"W  <i>DFO(6308897-06)</i>
Delete	depth of 4 feet (See Chart No. 1, I10) This notice affects Electronic Navigational Chart: CA376161	45°46'16.6"N 062°50'00.6"W  <i>DFO(6308897-07)</i>
Add	rock awash at chart datum (See Chart No. 1, K12) This notice affects Electronic Navigational Chart: CA376161	45°46'16.6"N 062°50'00.6"W  <i>DFO(6308897-08)</i>

MONTHLY NOTICES TO MARINERS  
EASTERN EDITION 03/2020  
SECTION 2 – CHART CORRECTIONS

---

**4406 - Tryon Shoals to / à Cape Egmont - New Edition - 27-FEB-1998 - NAD 1983**

06-MAR-2020

LNM/D. 21-FEB-2020

Add	rock awash at chart datum (See Chart No. 1, K12)	46°18'50.6"N 063°48'33.5"W  <i>DFO(6308890-01)</i>
Add	depth of 1.1 metres (See Chart No. 1, I10)	46°18'13.2"N 063°45'28.8"W  <i>DFO(6308890-02)</i>
Replace	depth of 5.2 metres with depth of 0.3 metres (See Chart No. 1, I10)	46°18'50.3"N 063°48'02.1"W  <i>DFO(6308890-03)</i>
Add	depth of 0.6 metres (See Chart No. 1, I10) This notice affects Electronic Navigational Chart: CA376076	46°18'20.4"N 063°46'36.7"W  <i>DFO(6308890-04)</i>
Delete	depth of 2.6 metres (See Chart No. 1, I10)	46°18'19.0"N 063°46'43.7"W  <i>DFO(6308890-05)</i>
Add	drying height of 0.5 metres (See Chart No. 1, I15) This notice affects Electronic Navigational Chart: CA376076	46°16'49.2"N 063°43'47.3"W  <i>DFO(6308890-11)</i>
Delete	depth of 0.8 metres (See Chart No. 1, I10)	46°16'43.6"N 063°43'44.7"W  <i>DFO(6308890-12)</i>
Delete	depth of 1.4 metres (See Chart No. 1, I10) This notice affects Electronic Navigational Chart: CA376076	46°16'51.4"N 063°44'00.5"W  <i>DFO(6308890-13)</i>
Add	depth of 1.2 metres (See Chart No. 1, I10) This notice affects Electronic Navigational Chart: CA376076	46°16'45.8"N 063°44'06.2"W  <i>DFO(6308890-14)</i>
Delete	depth of 2.4 metres (See Chart No. 1, I10)	46°16'41.1"N 063°44'06.7"W  <i>DFO(6308890-15)</i>
Replace	depth of 0.8 metres, with drying height of 0.4 metres (See Chart No. 1, I10, I15)	46°16'04.8"N 063°42'27.2"W  <i>DFO(6308890-16)</i>
Replace	depth of 0.4 metres, with drying height of 0.8 metres (See Chart No. 1, I10, I15)	46°15'39.5"N 063°42'19.7"W  <i>DFO(6308890-17)</i>
Add	drying height of 0.3 metres (See Chart No. 1, I15) This notice affects Electronic Navigational Chart: CA376076	46°12'57.8"N 063°37'41.6"W  <i>DFO(6308890-18)</i>

MONTHLY NOTICES TO MARINERS  
EASTERN EDITION 03/2020  
SECTION 2 – CHART CORRECTIONS

---

Delete	depth of 0.4 metres (See Chart No. 1, I10)	46°13'03.0"N 063°37'47.6"W  <i>DFO(6308890-19)</i>
Add	depth of 0.7 metres (See Chart No. 1, I10) This notice affects Electronic Navigational Chart: CA376178	46°10'33.5"N 063°31'23.3"W  <i>DFO(6308890-20)</i>
<b>4425 - Covehead Bay - New Edition - 01-NOV-2002 - NAD 1983</b>		
27-MAR-2020		LNMD. 11-OCT-2019
Affix	patch Download Patch - <a href="ftp://ftp.dfo-mpo.gc.ca/patches/4425v3PA2_Covehead_Bay.pdf">ftp://ftp.dfo-mpo.gc.ca/patches/4425v3PA2_Covehead Bay.pdf</a>	46°25'40.0"N 063°08'30.0"W  <i>DFO(6308841-01)</i>
Affix	patch Download Patch - <a href="ftp://ftp.dfo-mpo.gc.ca/patches/4425v3PA3_Covehead_Bay.pdf">ftp://ftp.dfo-mpo.gc.ca/patches/4425v3PA3_Covehead Bay.pdf</a>	46°24'30.0"N 063°07'30.0"W  <i>DFO(6308841-02)</i>
<b>4430 - Pointe Ouest - New Edition - 22-MAY-2015 - NAD 1983</b>		
27-MAR-2020		LNMD. 31-MAY-2019
Amend	FI 5s28m12M to read FI 5s28m13M against light (See Chart No. 1, P16) This notice affects Electronic Navigational Chart: CA179245, CA279044, CA479152 <i>(Q2019186) LL(1523) DFO(6410299-01)</i>	49°51'50.6"N 064°31'23.7"W
<b>4485 - Cap des Rosiers à/to Chandler - New Edition - 17-JUN-2011 - NAD 1983</b>		
13-MAR-2020		LNMD. 07-FEB-2020
Amend	Iso G 2s3M to read FI G 5s6m5M against light (See Chart No. 1, P16) This notice affects Electronic Navigational Chart: CA379086, CA579064 <i>(Q2019174) LL(1401.5) DFO(6410283-01)</i>	48°24'50.5"N 064°23'32.4"W
<b>4583 - St. Julien Island to / à Hooping Harbour including / y compris Canada Bay - New Edition - 31-MAY-2002 - Unknown</b>		
27-MAR-2020		LNMD. 28-JUN-2013
Replace	depth of 4¾ fathoms with depth of 3½ fathoms (See Chart No. 1, I10)	50°47'23.5"N 056°06'15.2"W  <i>DFO(6308941-03)</i>
<b>4625 - Burin Peninsula to / à Saint-Pierre - New Edition - 24-JAN-2003 - NAD 1983</b>		
27-MAR-2020		LNMD. 22-NOV-2019
Add	Breakwater (See Chart No. 1, F4.1)  This notice affects Electronic Navigational Chart: CA376164	joining 46°56'33.4"N 055°32'25.8"W 46°56'29.1"N 055°32'29.3"W and 46°56'27.2"N 055°32'29.3"W  <i>DFO(6308937-01)</i>
Reposition	light FI G (See Chart No. 1, P1) This notice affects Electronic Navigational Chart: CA376164	from 46°56'34.4"N 055°32'27.5"W to 46°56'27.2"N 055°32'29.3"W  <i>(N2020010) LL(73.84) DFO(6308937-02)</i>

MONTHLY NOTICES TO MARINERS  
EASTERN EDITION 03/2020  
SECTION 2 – CHART CORRECTIONS

---

**4663 - Cow Head to / à Pointe Riche - New Edition - 01-AUG-2003 - NAD 1983**

27-MAR-2020

LNMD. 14-FEB-2020

Delete	depth of 13 fathoms (See Chart No. 1, I10)	50°36'29.3"N 057°14'55.2"W  <i>DFO(6308820-02)</i>
Add	depth of 8 fathoms (See Chart No. 1, I10)	50°36'29.3"N 057°14'44.0"W  <i>DFO(6308820-03)</i>
Delete	depth of 9 fathoms (See Chart No. 1, I10) This notice affects Electronic Navigational Chart: CA276138	50°41'33.8"N 057°26'26.8"W  <i>DFO(6308865-01)</i>
Add	depth of 6 fathoms (See Chart No. 1, I10) This notice affects Electronic Navigational Chart: CA276138	50°41'28.0"N 057°26'30.1"W  <i>DFO(6308865-02)</i>
Add	depth of 8 fathoms (See Chart No. 1, I10)	50°41'22.1"N 057°22'45.0"W  <i>DFO(6308865-05)</i>
Delete	depth of 13 fathoms (See Chart No. 1, I10)	50°41'15.6"N 057°22'41.2"W  <i>DFO(6308865-06)</i>
Delete	depth of 12 fathoms (See Chart No. 1, I10)	50°41'37.0"N 057°22'03.7"W  <i>DFO(6308865-07)</i>
Add	depth of 10 fathoms (See Chart No. 1, I10)	50°41'37.9"N 057°22'05.6"W  <i>DFO(6308865-08)</i>

**4679 - Hawkes Bay, Port Saunders, Back Arm - New Edition - 29-NOV-2002 - NAD 1983**

27-MAR-2020

LNMD. 14-FEB-2020

Add	depth of 11 fathoms (See Chart No. 1, I10)	50°36'49.4"N 057°13'06.7"W  <i>DFO(6308820-01)</i>
Add	depth of 8 fathoms (See Chart No. 1, I10)	50°36'29.3"N 057°14'44.0"W  <i>DFO(6308820-03)</i>
Delete	depth of 13 fathoms (See Chart No. 1, I10)	50°36'38.1"N 057°13'04.2"W  <i>DFO(6308820-04)</i>
Add	depth of 7 fathoms (See Chart No. 1, I10)	50°36'38.7"N 057°13'06.1"W  <i>DFO(6308820-05)</i>
Delete	depth of 9 fathoms (See Chart No. 1, I10) This notice affects Electronic Navigational Chart: CA276138	50°41'28.3"N 057°26'30.6"W  <i>DFO(6308865-01)</i>

MONTHLY NOTICES TO MARINERS  
EASTERN EDITION 03/2020  
SECTION 2 – CHART CORRECTIONS

---

Add	depth of 6 fathoms (See Chart No. 1, I10) This notice affects Electronic Navigational Chart: CA276138	50°41'28.0"N 057°26'30.1"W  <i>DFO(6308865-02)</i>
Add	depth of 8 fathoms (See Chart No. 1, I10)	50°41'23.9"N 057°23'05.1"W  <i>DFO(6308865-03)</i>
Delete	depth of 9 fathoms (See Chart No. 1, I10)	50°41'23.4"N 057°22'46.5"W  <i>DFO(6308865-04)</i>
Add	depth of 8 fathoms (See Chart No. 1, I10)	50°41'22.1"N 057°22'45.0"W  <i>DFO(6308865-05)</i>
Delete	depth of 12 fathoms (See Chart No. 1, I10)	50°41'40.1"N 057°22'03.6"W  <i>DFO(6308865-07)</i>
Add	depth of 10 fathoms (See Chart No. 1, I10)	50°41'37.9"N 057°22'05.6"W  <i>DFO(6308865-08)</i>
Delete	depth of 2 fathoms (See Chart No. 1, I10)	50°36'18.5"N 057°11'08.8"W  <i>DFO(6308865-09)</i>
Add	depth of 1 fathom, 2 feet (See Chart No. 1, I10)	50°36'19.7"N 057°11'08.6"W  <i>DFO(6308865-10)</i>
 <b>4679 - Hawkes Harbour - New Edition - 29-NOV-2002 - NAD 1983</b>		
27-MAR-2020		LNMD. 14-FEB-2020
Add	depth of 8 fathoms (See Chart No. 1, I10)	50°36'29.3"N 057°14'44.0"W  <i>DFO(6308820-03)</i>
 <b>4680 - Hawkes Bay to / à Ste Geneviève Bay including / y compris St. John Bay - New Edition - 07-NOV-2003 - NAD 1983</b>		
27-MAR-2020		LNMD. 14-FEB-2020
Add	depth of 11 fathoms (See Chart No. 1, I10)	50°36'49.4"N 057°13'06.7"W  <i>DFO(6308820-01)</i>
Add	depth of 8 fathoms (See Chart No. 1, I10)	50°36'29.3"N 057°14'44.0"W  <i>DFO(6308820-03)</i>
Delete	depth of 9 fathoms (See Chart No. 1, I10) This notice affects Electronic Navigational Chart: CA276138	50°41'29.1"N 057°26'32.7"W  <i>DFO(6308865-01)</i>

MONTHLY NOTICES TO MARINERS  
EASTERN EDITION 03/2020  
SECTION 2 – CHART CORRECTIONS

---

Add	depth of 6 fathoms (See Chart No. 1, I10) This notice affects Electronic Navigational Chart: CA276138	50°41'28.0"N 057°26'30.1"W  <i>DFO(6308865-02)</i>
Delete	depth of 9 fathoms (See Chart No. 1, I10)	50°41'22.4"N 057°22'48.4"W  <i>DFO(6308865-04)</i>
Add	depth of 8 fathoms (See Chart No. 1, I10)	50°41'22.1"N 057°22'45.0"W  <i>DFO(6308865-05)</i>
Delete	depth of 12 fathoms (See Chart No. 1, I10)	50°41'34.5"N 057°22'03.7"W  <i>DFO(6308865-07)</i>
Add	depth of 10 fathoms (See Chart No. 1, I10)	50°41'37.9"N 057°22'05.6"W  <i>DFO(6308865-08)</i>
<b>4822 - Cape St John to / à St Anthony - New Chart - 30-JUN-2006 - NAD 1983</b> 27-MAR-2020		LNMD. 08-JUN-2018
Delete	obstruction with known depth of 8 metres with legend 'Rep (2018)' (See Chart No. 1, K41, I3.2) This notice affects Electronic Navigational Chart: CA376660	50°47'21.6"N 056°06'07.8"W  <i>DFO(6308941-01)</i>
Add	depth of 6.3 metres (See Chart No. 1, I10) This notice affects Electronic Navigational Chart: CA376660	50°47'18.7"N 056°06'08.8"W  <i>DFO(6308941-02)</i>
<b>4841 - Cape St Mary's to / à Argentia - New Edition - 29-MAY-2015 - NAD 1983</b> 27-MAR-2020		LNMD. 18-OCT-2019
Delete	depth of 0.5 metres (See Chart No. 1, I10) This notice affects Electronic Navigational Chart: CA376296, CA576299	47°14'57.0"N 053°57'34.7"W  <i>DFO(6308918-03)</i>
Add	rock which covers and uncovers with drying height of 0.9 metres (See Chart No. 1, K11) This notice affects Electronic Navigational Chart: CA376296, CA576299	47°14'56.0"N 053°57'34.5"W  <i>DFO(6308918-04)</i>
<b>4841 - Placentia Road - New Edition - 29-MAY-2015 - NAD 1983</b> 27-MAR-2020		LNMD. 18-OCT-2019
Replace	depth of 3.2 metres with depth of 0.5 metres (See Chart No. 1, I10) This notice affects Electronic Navigational Chart: CA576299	47°14'34.2"N 053°57'13.6"W  <i>DFO(6308918-01)</i>
Replace	depth of 1.4 metres with depth of 0.6 metres (See Chart No. 1, I10) This notice affects Electronic Navigational Chart: CA576299	47°14'45.7"N 053°57'29.3"W  <i>DFO(6308918-02)</i>

MONTHLY NOTICES TO MARINERS  
EASTERN EDITION 03/2020  
SECTION 2 – CHART CORRECTIONS

---

Delete	depth of 0.5 metres (See Chart No. 1, I10) This notice affects Electronic Navigational Chart: CA376296, CA576299	47°14'57.2"N 053°57'35.4"W  <i>DFO(6308918-03)</i>
Add	rock which covers and uncovers with drying height of 0.9 metres (See Chart No. 1, K11) This notice affects Electronic Navigational Chart: CA376296, CA576299	47°14'56.0"N 053°57'34.5"W  <i>DFO(6308918-04)</i>
<b>4905 - Cape Tormentine à / to West Point - New Edition - 29-DEC-2000 - NAD 1983</b> 06-MAR-2020		LNMD. 07-FEB-2020
Add	depth of 0.6 metres (See Chart No. 1, I10) This notice affects Electronic Navigational Chart: CA376076	46°18'20.4"N 063°46'36.7"W  <i>DFO(6308890-04)</i>
Delete	depth of 3.4 metres (See Chart No. 1, I10) This notice affects Electronic Navigational Chart: CA376076	46°18'15.9"N 063°46'42.3"W  <i>DFO(6308890-06)</i>
Add	depth of 0.3 metres (See Chart No. 1, I10) This notice affects Electronic Navigational Chart: CA376076	46°18'50.3"N 063°48'02.1"W  <i>DFO(6308890-07)</i>
Add	drying height of 0.5 metres (See Chart No. 1, I15) This notice affects Electronic Navigational Chart: CA376076	46°16'49.2"N 063°43'47.3"W  <i>DFO(6308890-11)</i>
Delete	depth of 1.4 metres (See Chart No. 1, I10) This notice affects Electronic Navigational Chart: CA376076	46°16'51.4"N 063°44'00.5"W  <i>DFO(6308890-13)</i>
Add	depth of 1.2 metres (See Chart No. 1, I10) This notice affects Electronic Navigational Chart: CA376076	46°16'45.8"N 063°44'06.2"W  <i>DFO(6308890-14)</i>
Add	drying height of 0.3 metres (See Chart No. 1, I15) This notice affects Electronic Navigational Chart: CA376076	46°12'57.8"N 063°37'41.6"W  <i>DFO(6308890-18)</i>
<b>4921 - Sainte-Thérèse-de-Gaspé - New Edition - 02-DEC-2016 - NAD 1983</b> 13-MAR-2020		LNMD. 07-FEB-2020
Amend	Iso G 2s6m3M to read FI G 5s6m5M against light (See Chart No. 1, P16) This notice affects Electronic Navigational Chart: CA379086, CA579064	48°24'50.5"N 064°23'32.4"W  <i>(Q2019174) LL(1401.5) DFO(6410283-01)</i>



MONTHLY NOTICES TO MARINERS  
EASTERN EDITION 03/2020  
SECTION 2 – CHART CORRECTIONS

---

**4950 - La Passe - New Edition - 19-JUL-2013 - NAD 1983**

20-MAR-2020

LNMD. 02-AUG-2019

Add depth of 3 metres 8 decimetres 47°16'53.6"N 061°45'13.9"W  
(See Chart No. 1, I10)  
This notice affects Electronic Navigational Chart: CA479226

*DFO(6410326-01)*

Delete depth of 7 metres 0 decimetres 47°16'59.2"N 061°45'11.1"W  
(See Chart No. 1, I10)  
This notice affects Electronic Navigational Chart: CA479226

*DFO(6410326-02)*

Add depth of 6 metres 7 decimetres 47°16'59.2"N 061°45'11.9"W  
(See Chart No. 1, I10)  
This notice affects Electronic Navigational Chart: CA479226

*DFO(6410326-03)*

**4950 - Îles de la Madeleine - New Edition - 19-JUL-2013 - NAD 1983**

20-MAR-2020

LNMD. 02-AUG-2019

Amend Iso R 2s11m4M to read Iso R 2s7m4M against light 47°12'56.4"N 061°59'02.8"W  
(See Chart No. 1, P16)  
This notice affects Electronic Navigational Chart: CA379216

*(Q2019134) LL(1499.3) DFO(6410231-01)*

Delete front range/leading light F R 15M, with leading line on a bearing of 026° 47°33'22.9"N 061°33'44.4"W  
and a reciprocal 206  
(See Chart No. 1, P20.2)  
This notice affects Electronic Navigational Chart: CA379216, CA579084

*(Q2020020) LL(1483) DFO(6410317-01)*

Add subsurface Ocean Data Acquisition System (SADO/ODAS) with 47°24'21.4"N 061°57'34.6"W  
unknown depth  
(See Chart No. 1, L25)  
This notice affects Electronic Navigational Chart: CA379216

*DFO(6410327-01)*

**4954 - Chenal du Havre de la Grande Entrée - New Edition - 18-MAR-2016 - NAD 1983**

20-MAR-2020

LNMD. 29-MAR-2019

Delete front range/leading light F R 6m, with leading line on a bearing of 026° 47°33'22.9"N 061°33'44.4"W  
and a reciprocal 206  
(See Chart No. 1, P20.2)  
This notice affects Electronic Navigational Chart: CA379216, CA579084

*(Q2020020) LL(1483) DFO(6410317-01)*

**4970 - Baie de Bonne-Espérance à/to Île Mistanoque - New Chart - 04-AUG-2017 - NAD 1983**

06-MAR-2020

LNMD. 06-DEC-2019

Amend Iso 2s12m6M to read Iso 2s13m7M against light 51°19'20.7"N 057°50'31.3"W  
(See Chart No. 1, P16)  
This notice affects Electronic Navigational Chart: CA276138, CA479249

*(Q2019176) LL(1539.13) DFO(6410266-01)*

MONTHLY NOTICES TO MARINERS  
EASTERN EDITION 03/2020  
SECTION 2 – CHART CORRECTIONS

---

**5031 - Battle Harbour - New Edition - 31-DEC-1999 - NAD 1983**

27-MAR-2020

LNMD. 11-MAY-2018

Affix patch 52°16'25.8"N 055°35'12.6"W  
Download Patch - [ftp://ftp.dfo-mpo.gc.ca/patches/5031v2PA3\\_Battle\\_Harbour.pdf](ftp://ftp.dfo-mpo.gc.ca/patches/5031v2PA3_Battle_Harbour.pdf)  
This notice affects Electronic Navigational Chart: CA576382  
*DFO(6308917-01)*

**5163 - Rigolet - New Chart - 30-MAR-2018 - NAD 1983**

13-MAR-2020

Add depth of 1.3 metres 54°10'50.0"N 058°25'28.3"W  
(See Chart No. 1, I10)  
This notice affects Electronic Navigational Chart: CA576737  
*DFO(6308934-01)*

Delete depth of 2.2 metres 54°10'51.8"N 058°25'32.1"W  
(See Chart No. 1, I10)  
*DFO(6308934-02)*

Add depth of 1 metre 54°10'51.5"N 058°25'32.4"W  
(See Chart No. 1, I10)  
*DFO(6308934-03)*

Add depth of 0.9 metres 54°10'51.2"N 058°25'34.4"W  
(See Chart No. 1, I10)  
This notice affects Electronic Navigational Chart: CA576737  
*DFO(6308934-04)*

**6409 - Rabbitskin River to Fort Simpson (Kilometre 300 to Kilometre 330) - New Edition - 31-DEC-2010 - NAD 1983**

27-MAR-2020

LNMD. 14-FEB-2014

Reposition green port hand can buoy from 61°50'32.4"N 121°10'28.2"W  
(See Chart No. 1, Qg) to 61°50'36.5"N 121°10'30.3"W  
*DFO(6604601-01)*

**6410 - Fort Simpson to/à Trail River Kilometre 330 / Kilometre 390 - New Edition - 11-SEP-2009 - NAD 1983**

27-MAR-2020

LNMD. 14-FEB-2014

Reposition green port hand can buoy from 61°50'33.6"N 121°10'30.8"W  
(See Chart No. 1, Qg) to 61°50'36.1"N 121°10'34.6"W  
*DFO(6604601-01)*

**6427 - Point Separation to/au Aklavik Channel Kilometre 1480 / Kilomètre 1540 - New Edition - 27-APR-2018 - World Geodetic System 1984**

20-MAR-2020

LNMD. 24-MAY-2019

Reposition green port hand can buoy from 67°44'04.5"N 134°13'02.9"W  
(See Chart No. 1, Qg) to 67°44'06.5"N 134°13'00.5"W  
*DFO(6604611-01)*

Reposition red starboard hand conical buoy from 67°44'19.4"N 134°12'35.4"W  
(See Chart No. 1, Qf) to 67°44'25.2"N 134°12'31.7"W  
*DFO(6604611-02)*

MONTHLY NOTICES TO MARINERS  
EASTERN EDITION 03/2020  
SECTION 2 – CHART CORRECTIONS

---

**7750 - Approaches to/Approches à Cambridge Bay - New Edition - 19-JAN-2007 - NAD 1983**

06-MAR-2020

LNMD. 08-JUL-2016

Delete depth of 10.5 metres  
(See Chart No. 1, I10)  
This notice affects Electronic Navigational Chart: CA373331

69°00'30.8"N 105°50'47.3"W

*DFO(6604610-01)*

Add depth of 8.9 metres  
(See Chart No. 1, I10)  
This notice affects Electronic Navigational Chart: CA373331

69°00'30.7"N 105°50'49.4"W

*DFO(6604610-02)*

**7778 - Coronation Gulf Eastern Portion/Partie Est - New Edition - 13-JUN-1997 - NAD 1983**

13-MAR-2020

LNMD. 19-SEP-2014

Delete depth of 10.4 metres  
(See Chart No. 1, I10)  
This notice affects Electronic Navigational Chart: CA373337

68°28'37.2"N 111°03'28.0"W

*DFO(6604607-01)*

Add depth of 5.4 metres  
(See Chart No. 1, I10)  
This notice affects Electronic Navigational Chart: CA373337

68°28'30.2"N 111°03'39.7"W

*DFO(6604607-02)*

**7778 - Johansen Bay and/et Edinburgh Channel - New Edition - 13-JUN-1997 - NAD 1983**

13-MAR-2020

LNMD. 19-SEP-2014

Add depth of 5.4 metres  
(See Chart No. 1, I10)  
This notice affects Electronic Navigational Chart: CA373337

68°28'30.2"N 111°03'39.7"W

*DFO(6604607-02)*

Add obstruction with known depth of 6.1 metres  
(See Chart No. 1, K41)  
This notice affects Electronic Navigational Chart: CA373337

68°35'24.6"N 111°01'17.1"W

*DFO(6604607-03)*

**7783 - Jenny Lind Bay - New Edition - 13-JUN-1997 - NAD 1983**

06-MAR-2020

LNMD. 30-AUG-2019

Delete depth of 33 metres  
(See Chart No. 1, I10)  
This notice affects Electronic Navigational Chart: CA373267

68°37'41.0"N 101°46'20.5"W

*DFO(6604608-01)*

Add depth of 3.7 metres  
(See Chart No. 1, I10)  
This notice affects Electronic Navigational Chart: CA373267

68°37'51.2"N 101°46'28.0"W

*DFO(6604608-02)*

Add depth of 6.1 metres  
(See Chart No. 1, I10)  
This notice affects Electronic Navigational Chart: CA373267

68°37'41.3"N 101°46'22.3"W

*DFO(6604608-03)*

MONTHLY NOTICES TO MARINERS  
EASTERN EDITION 03/2020  
SECTION 2 – CHART CORRECTIONS

---

**8006 - Scotian Shelf / Plate-Forme Néo-Écossaise: Browns Bank to Emerald Bank / Banc de Brown au Banc D'Émeraude  
- New Edition - 14-FEB-2003 - NAD 1983**

20-MAR-2020

LNMD. 23-NOV-2018

Amend depth of 785 fathoms to read 790 fathoms against subsurface Ocean 42°02'37.0"N 065°21'42.0"W  
Data Acquisition System ODAS/SADO  
(See Chart No. 1, L25)

*DFO(6308935-02)*

Amend depth of 48 fathoms to read 51 fathoms against subsurface Ocean 43°29'47.4"N 062°52'09.1"W  
Data Acquisition System ODAS/SADO  
(See Chart No. 1, L25)

This notice affects Electronic Navigational Chart: CA176140, CA276801

*DFO(6308935-03)*

Amend depth of 49 fathoms to read 56 fathoms against subsurface Ocean 43°00'09.0"N 065°33'53.0"W  
Data Acquisition System ODAS/SADO  
(See Chart No. 1, L25)

This notice affects Electronic Navigational Chart: CA276206

*DFO(6308935-04)*

**8007 - Halifax to / à Sable Island / Île de Sable, Including / y compris Emerald Bank / Banc d'Émeraude and / et Sable  
Island Bank / Banc de l'Île de Sable - New Edition - 30-AUG-2002 - NAD 1983**

20-MAR-2020

LNMD. 08-NOV-2019

Amend depth of 48 fathoms to read 51 fathoms against subsurface Ocean 43°29'47.4"N 062°52'09.1"W  
Data Acquisition System ODAS/SADO  
(See Chart No. 1, L25)

This notice affects Electronic Navigational Chart: CA176140, CA276801

*DFO(6308935-03)*

\*315 RADIO AIDS TO MARINE NAVIGATION 2019 (ATLANTIC, ST. LAWRENCE, GREAT LAKES, LAKE WINNIPEG, ARCTIC AND PACIFIC)

**PART 4 – Pages 85 to 86**

**DELETE THE FOLLOWING SECTION:**

**4.3.8.5 Quarantine Messages**

**REPLACE WITH THE FOLLOWING:**

**4.3.8.5 Quarantine Messages**

1. In the following circumstances only, the person in charge of a vessel shall inform a quarantine officer, or cause a quarantine officer to be informed, at the Public Health Agency of Canada's Central Notification System (CNS), by telephone, email, or radio (via the nearest MCTS Centre), when during the course of a vessel voyage:

- a) A person on board has a fever of 38°C or greater (OR 2 or more signs of fever e.g., shivering, flushed skin, excessive sweating, complains of feeling feverish);

**AND**

One, or more, of the following symptoms:

- i. Difficulty breathing;
- ii. Repeated cough;
- iii. Diarrhea;
- iv. Headache;
- v. Recent confusion;
- vi. Skin rash;
- vii. Bruising or bleeding without previous injury.

- b) A person on board appears obviously unwell.

- c) A person on board exhibits cough with blood.

- d) There is a death on board.

- e) Human remains are on board.

2. To inform a quarantine officer, the person in charge of a vessel shall provide a Maritime Declaration of Health by email at [phac.cns-snc.aspc@canada.ca](mailto:phac.cns-snc.aspc@canada.ca). If this method not be available, a person in charge of a vessel shall provide the following information to the nearest MCTS Centre:

- a) the name and nationality of the vessel;
- b) the ports called at during the vessel voyage;
- c) the nature of the cargo on board the vessel;
- d) the number of persons comprising the crew of the vessel;
- e) the number of passengers on board the vessel;
- f) the port of destination of the vessel and the name of the vessel's owner or, if the owner is not in Canada, the name of the vessel's agent in Canada;

SECTION 3 – RADIO AIDS TO MARINE NAVIGATION CORRECTIONS

---

- g) the condition of all persons on board the vessel and details of any death or illness occurring during the voyage;
  - h) whether the body of any person is being carried on the vessel;
  - i) the estimated time of arrival of the vessel at the port of destination; and,
  - j) the date and place of issuance of any de-ratting certificate or de-ratting exemption certificate applicable to the vessel.
3. Notification is requested 48 hours or greater prior to arrival. Should there be any change in the situation being reported, an updated report must be sent.
4. All Maritime Declarations of Health (new or updated) submitted 24 hours or less prior to arrival, must be accompanied by a call to the CNS at 1-833-615-2384.
5. The person in charge of a vessel who wishes to change their port of destination after receiving instructions from a quarantine officer, shall notify the quarantine officer of such change and request new instructions.

SECTION 4 – SAILING DIRECTIONS AND SMALL CRAFT GUIDE CORRECTIONS

ARC 401 — Hudson Strait, Hudson Bay and Adjoining Waters, 2009 —

Chapter 1 — Paragraph 178, after ‘...swept-depth symbols.’

Insert: A **conspicuous radio tower** (59°18.190'N, 069°36.070'W) with an elevation of 184 feet (56 m) showing a fixed red light is visible up to 20 miles to seaward while on the usual track through the approaches.

(C2020-003.01)

ATL 108 — Gulf of St. Lawrence (Southwest Portin), First Edition, 2006

Chapter 4 — Paragraph 280

Delete : « 4 feet (1.2 m) »

Replace by : 3 feet (0.9 m)

(Q2020-007.1)

Chapter 4 — Paragraph 280

Delete : « 2 feet (0.6 m) »

Replace by : 3 feet (1 m)

(Q2020-007.2)

ATL 110 — St. Lawrence River — Cap Whittle/Cap Gaspé to Les Escoumins and Anticosti Island, Third Edition, 2011

Chapter 3 — Paragraph 191

Delete : 4.6 m (2017)

Replace by : 4.9 m (2019)

(Q2020-015.1)

Chapter 3 — Paragraph 200

Delete : “An L-shaped breakwater”

Replace by : A breakwater

(Q2020-015.2)

Chapter 3 — In the vicinity of Paragraph 197

Delete the **Table 3.5 Port of Rimouski Wharves**

Replace by this one :

**Table 3.5 Port of Rimouski Wharves**

Berth	Length	Depth †	Remarks
	metres	metres	
<b>West Wharf</b>			
1	213	—	Wharf in ruins / Berthing is prohibited / Vessels are not to approach within 20 m of the wharf.
8	30	—	Wharf in ruins / Berthing is prohibited / Vessels are not to approach within 20 m of the wharf.
<b>Cross-Wharf</b>			
2	184	—	Wharf in ruins / Berthing is prohibited / Vessels are not to approach within 20 m of the wharf.
<b>East Wharf</b>			
3	130	5.7	
4	150	6.3	Oil pipeline for petroleum products
5	150	7.1	Oil pipeline for petroleum products
6	113	2.5	
7	255	2.5	A portion is used for the seasonal ferry

† Depths are referred to chart datum.

(Q2020-015.3)

SECTION 4 – SAILING DIRECTIONS AND SMALL CRAFT GUIDE CORRECTIONS

---

ATL 111 — St. Lawrence River — Île Verte to Québec and Fjord du Saguenay, Third Edition, 2007

Chapter 1 — Paragraph 33

Delete : “A conspicuous microwave tower, marked by lights, is situated 0.8 mile NE of Pointe aux Vaches.”  
(Q2020-003.1)

Chapter 1 — Paragraph 45, after “equipped with a movable ramp for pedestrians”

Add : and floating pontoons  
(Q2020-003.2)

Chapter 1 — Paragraph 46, after “west of the wharf ”

Insert : and is used for landing helicopters.  
(Q2020-003.3)

Chapter 3 — Paragraph 22

Delete : “the wharf (Quai d’en Haut) is in ruins.”  
Replace by : there is a **dock** and a **boat launch**.  
(Q2020-005.1)

Chapter 3 — Paragraph 28

Delete : “stakes with **daybeacons**”  
Replace by : lighted and unlighted **buoys**  
(Q2020-006.1)

Chapter 3 — Paragraph 38

Delete : “A 282 m long **wharf** with depths ... side of the harbour. ”  
Replace by : A 282 m long **wharf** runs along the ESE side of the  
harbour. It has a minimum depth of 9.1 m.  
(Q2019-074.1)

ATL 112 — St. Lawrence River — Cap-Rouge to Montreal and Richelieu River, Third Edition, 2009

Chapter 1 — Paragraph 27, end of paragraph

Add : A wreck is located 0.4 miles WSW from the anchorage area.  
(Q2020-012.1)

Chapter 1 — Adjacent to Paragraph 27, add a caution pictograph.

(Q2020-012.2)

ATL 120 — Labrador, Camp Islands to Hamilton Inlet (including Lake Melville), First Edition, 2004

The booklet ATL 120 – Labrador, Camp Islands to Hamilton Inlet (including Lake Melville),  
First Edition, 2004 is now cancelled and replaced with new booklet *ATL 120 – Labrador,  
Camp Islands to Hamilton Inlet (including Lake Melville), Second Edition, 2020.*

(N2020-00.1)



SECTION 4 – SAILING DIRECTIONS AND SMALL CRAFT GUIDE CORRECTIONS

---

CEN 301 — St. Lawrence River — Montréal to Kingston, Second Edition, 2010

Chapter 1 — After paragraph 124

Insert :           124.1     The **public wharf** at Sainte-Anne-de-Bellevue is located on the north shore 400 feet (122 m) east of the downstream entrance to the lock. It is 120 feet (37 m) long, 5 feet (1.5 m) high and has a depth of 6 feet (1.8 m).

(Q2020-017.1)

Chapter 1 — Paragraph 159

Delete : “A **breakwater** on the east side ... then 15 m to the NW. ”

Replace by :     Directly north of the wharf and centered on this one, an area 215 m seaward by 230 m parallel to the coast is designated as unsuitable for anchorage and may present **hazards** to surface navigation. This area contains 53 submerged anchor blocks and the remains of a breakwater. Cables connect the blocks and cause an obstruction to navigation.

(Q2019-070.1)

Chapter 1 — Adjacent to Paragraph 159, add a caution pictograph.

(Q2019-070.2)

MONTHLY NOTICES TO MARINERS  
EASTERN EDITION 03/2020

SECTION 5 – LIST OF LIGHTS, BUOYS AND FOG SIGNALS CORRECTIONS

The amendments are highlighted and deletions are crossed out. For general and region-specific information on the List of Lights, click on the following links: [Newfoundland and Labrador Coast](#), [Atlantic Coast](#), [Inland Waters](#) and [Pacific Coast](#).

No.	Name	Position ----- Latitude N. Longitude W.	Light Characteristics	Focal Height in m. above water	Nomi- nal Range	Description ----- Height in meters above ground	Remarks ----- Fog Signals
-----	------	--	--------------------------	--	-----------------------	--	---------------------------------

**NEWFOUNDLAND AND LABRADOR COAST**

**PLACENTIA BAY (LL 14.4 – 79)**

73.84 <del>H0358</del>	Lawn West Breakwater Light	46 56 27.2 055 32 29.3	Fl G 4s	3.5	2	Cylindrical Mast.	Year round.
							Chart:4625 Edn 03/20 (N20-010)

**ATLANTIC COAST**

**SAINT JOHN RIVER (LL 114.5 – 141.5)**

116 H4090	Swift Point	W. of point. 45 16 56.7 066 07 16.8	Fl G 4s	28.1	5	White pyramid tower with red top. 13.9	Flash 1 s; eclipse 3 s. Seasonal.
							Chart:4141 Edn 03/20 (F20-001)

**NOVA SCOTIA, SOUTHEAST COAST (LL 327 – 684.02)**

432 H3708	West Ironbound Island	On S. side of island, entrance to LaHave River. 44 13 43.7 064 16 28.0	LFl W 12s	23.6	8	Square skeleton tower, red rectangular daymark with white horizontal bands. 10.0	Flash 2 s; eclipse 10 s. <del>Operates at night only.</del> Year round.
							Chart:4394 Edn 03/20 (F20-003)

**CAPE BRETON ISLAND, N.S. (LL 704.85 – 882.5)**

752.6 H3359	Rouses Point	45 50 35.0 060 07 56.8	LFl Y 6s	9.0	12	Square skeleton tower, red rectangular daymark with white band.	Flash 2 s; eclipse 4 s. Year round.
							Chart:4375 Edn 03/20 (G20-011, 017)
752.7	Gabarus light buoy JX10	45 50 32.3 060 08 15.7	Fl R 4s	.....	.....	Red, marked "JX10".	Year round.
							Chart:4375 Edn 03/20 (G20-011)
753 H3358	Gabarus	On Harbour Point, S. shore of bay. 45 50 35.2 060 08 50.3	F R .....	16.5	8	White hexagonal tower with red top. 9.5	Operates at night only. Year round.
							Chart:4375 Edn 03/20 (G20-011)

**GULF OF ST. LAWRENCE (LL 883.2 – 940.3, 1169.1 – 1426, 1477.5 – 1584)**

1401.5 H1715	Sainte-Thérèse; de Gaspé FR	On outer end of breakwater. 48 24 50.5 064 23 32.4	Fl G 5s	6.1	5	Mast.	Flash 1 s; eclipse 4 s. Seasonal.
							Chart:4921 Edn 03/20 (Q19-174)
1499.3 H0907.5	Quai de L'Anse-à- la-Cabane East Breakwater	Les Îles-de-la- Madeleine. 47 12 56.4 061 59 02.8	Iso R 2s	6.8	4	Mast. 2.7	Operates at night only. Seasonal.
							Chart:4950 Edn 03/20 (Q19-134)

MONTHLY NOTICES TO MARINERS  
EASTERN EDITION 03/2020

SECTION 5 – LIST OF LIGHTS, BUOYS AND FOG SIGNALS CORRECTIONS

No.	Name	Position ----- Latitude N. Longitude W.	Light Characteristics	Focal Height in m. above water	Nomi- nal Range	Description ----- Height in meters above ground	Remarks ----- Fog Signals
1523 H1878	Pointe Ouest	On W. extremity of <b>Anticosti</b> Island. 49 51 50.6 064 31 23.7	Fl W 5s	27.8	13	Skeleton tower. 29.4	Flash 1 s; eclipse 4 s. Operates at night only. Omnidirectional. Year round.  Chart:4430 Edn 03/20 (Q19-186)
1539.13 H1890.1	Île Mermettes  Racon - - (M) X & S Bands	<b>Archipel du Vieux Fort.</b> 51 19 20.7 057 50 31.3	Iso W 2s	12.8	7	Square skeleton tower. 6.7	Omnidirectional. Year round.  Chart:4970 Edn 03/20 (Q19-176)
1573.1	<b>Kegaska, John Guy barge</b>	<b>SE. extremity of barge.</b> 50 11 03.2 061 16 00.5	<b>Fl Y 4s</b>	.....	.....	.....	Private aid. Year round.  Chart:4452 Edn 03/20 (Q20-004)
<b><u>NORTHUMBERLAND STRAIT (LL 1085 – 1165.9)</u></b>							
1165.8 H1430	Escuminac Breakwater	On outer end of middle breakwater. 47 04 57.3 064 53 14.6	LFl Y 6s	8.2	11	Square skeleton tower, red rectangular daymark with white band. 6.9	Flash 2 s; eclipse 4 s. Operates 24 h. Year round.  Chart:4911 Edn 03/20 (G20-002)
<b><u>ST. LAWRENCE RIVER (LL 1584.5 – 1772, 1823.8 – 2185.7, 2273 – 2365.95)</u></b>							
1884 H2244	<b>Rocher de l'Hôpital range</b>						Delete from list.
1885 H2244.1							Delete from list.  Chart:1317 Edn 03/20 (Q20-025, 026)
1967	<b>Pointe Saint- Nicolas light buoy Q19</b>	<b>Route Saint- Augustin.</b> 46 42 41.2 071 26 41.8	Fl G 4s	.....	.....	Green spar, marked "Q19".	<del>(Winter spar.)</del> Year round.  Chart:1315 Edn 03/20 (Q19-141)
1984	<b>Banc des Ecureuils light buoy Q48</b>	<b>Sainte-Croix.</b> 46 38 26.5 071 42 48.4	Fl R 4s	.....	.....	Red spar, marked "Q48".	<del>(Winter spar.)</del> Year round.  Chart:1315 Edn 03/20 (Q19-143)
1992	<b>Poulier Paget light buoy Q57</b>	<b>Traverse de Cap- Santé.</b> 46 40 03.9 071 48 59.4	Fl G 4s	.....	.....	Green spar, marked "Q57".	<del>(Winter spar.)</del> Year round.  Chart:1314 Edn 03/20 (Q19-145)
1993	<b>Pointe Platon light buoy Q61</b>	N. of point. 46 40 37.5 071 50 58.2	Q G 1s	.....	.....	Green spar, marked "Q61".	<del>(Winter spar.)</del> Year round.  Chart:1314 Edn 03/20 (Q19-146)
2001.1	<b>Rapides Richelieu light buoy Q68</b>	46 39 10.1 071 54 13.1	Fl R 4s	.....	.....	Red spar, marked "Q68".	<del>(Winter spar.)</del> Year round.  Chart:1314 Edn 03/20 (Q19-147)

MONTHLY NOTICES TO MARINERS  
EASTERN EDITION 03/2020

SECTION 5 – LIST OF LIGHTS, BUOYS AND FOG SIGNALS CORRECTIONS

No.	Name	Position ----- Latitude N. Longitude W.	Light Characteristics	Focal Height in m. above water	Nomi- nal Range	Description ----- Height in meters above ground	Remarks ----- Fog Signals
2008	Barre à Boulard light buoy Q77	<del>N. of</del> Lotbinière. 46 37 25.0 071 56 42.4	Fl G 4s	.....	.....	Green spar, marked "Q77".	<del>(Winter spar.)</del> Year round.  Chart:1314 Edn 03/20 (Q19-150)
2008.1	Barre à Boulard light buoy Q76	Lotbinière. 46 37 35.2 071 56 41.5	Fl R 4s	.....	.....	Red spar, marked "Q76".	<del>(Winter spar.)</del> Year round.  Chart:1314 Edn 03/20 (Q19-149)
2014	Batture Simon light buoy D4	46 35 30.2 072 00 25.7	Fl R 4s	.....	.....	Red spar, marked "D4".	<del>(Winter spar.)</del> Year round.  Chart:1314 Edn 03/20 (Q19-151)
2018.5	Batture de la Grande Pointe light buoy D18	Grondines-Ouest. 46 34 09.7 072 03 29.3	Q R 1s	.....	.....	Red spar, marked "D18".	<del>(Winter spar.)</del> Year round.  Chart:1314 Edn 03/20 (Q19-152)
2022	Poulier du Calvaire light buoy D24	Pointe des Grondines. 46 33 56.1 072 04 45.6	Q R 1s	.....	.....	Red spar, marked "D24".	Year round.  Chart:1314 Edn 03/20 (Q19-153)

INLAND WATERS

**ST. LAWRENCE RIVER SEAWAY (LL 0.05 - 401, 1193 – 1204.5)**

0.05	Pont Samuel-de- Champlain downstream	Above the seaway, under the N. side of the bridge. 45 28 06.3 073 30 14.8	F G	.....	52.2	.....	Private aid. Operates 24 h. Seasonal (in place year round).	Chart:1429 Edn 03/20 (Q19-139)
0.06	Pont Samuel-de- Champlain upstream	Above the seaway, under the S. side of the bridge. 45 28 04.6 073 30 14.0	F G	.....	52.2	.....	Private aid. Operates 24 h. Seasonal (in place year round).	Chart:1429 Edn 03/20 (Q19-140)
5.2	Pointe Bell light buoy A1	Lac Saint-Louis. 45 24 26.2 073 43 11.3	Fl G 4s	.....	.....	Green spar, marked "A1".	Seasonal (in place year round).	Chart:1429 Edn 03/20 (Q20-022)

**LAKE ONTARIO (LL 403.4 – 551)**

492.2	Proctor Point	S. end of High Bluff Island. 43 58 21.4 077 44 44.6	Fl R 4s	12.1	5	White cylindrical tower with red top. 9.4	Seasonal.	Chart:2021 Edn 03/20 (B20-001)
-------	---------------	--	---------	------	---	---	-----------	-----------------------------------

**CANADIAN COAST GUARD – MARINE INFORMATION REPORT AND SUGGESTION SHEET**

Name of Ship or Sender: ..... Date: .....

Address of Sender: .....  
Street # Street Name

Town / City: ..... Prov / State: ..... Postal Code / Zip Code: .....

Tel / Fax / E-mail address of sender: .....

Observation Date: ..... Time (UTC): .....

Geographical Position: .....

Coordinate Position: Lat: ..... Long: .....

Position Method:  DGPS  GPS with WAAS  GPS  Radar  Other

Horizontal Datum Used:  WGS 84  NAD 27  Other

Estimated Position Accuracy: .....

Chart #: ..... Datum:  NAD 27  NAD 83

Chart Edition: ..... Last Correction applied: .....

Publications affected (Quote edition and page number): .....

\*Full details (Attach additional sheets as necessary): .....

Mariners are requested to notify the responsible authorities when new or suspected dangers to navigation are discovered, changes are observed in aids to navigation, or corrections to publications are seen to be necessary.

*In the case of new or suspected dangers to navigation, it is important that all details be given in order to aid with future investigations. Items of interest include heights, depths, physical description, type of bottom and equipment method used to position the item. It is helpful to mark details on the chart, which will be promptly replaced by the Canadian Hydrographic Service.*

Reports should be made to the nearest Marine Communications and Traffic Services Centre (MCTS) and should be confirmed in writing to:

Leader, Notices to Mariners  
Canadian Coast Guard  
Department of Fisheries and Oceans  
Montreal, QC H2Y 2E7  
[Notmar.XNCR@dfo-mpo.gc.ca](mailto:Notmar.XNCR@dfo-mpo.gc.ca)

In the case of information concerning aids to navigation or the  
List of Lights, Buoys and Fog Signals book.

**OR**

Director General, Canadian Hydrographic Service &  
Oceanographic Services  
Department of Fisheries and Oceans  
Ottawa, ON K1A 0E6  
[CHSINFO@dfo-mpo.gc.ca](mailto:CHSINFO@dfo-mpo.gc.ca)

In the case of new or suspected dangers to navigation or  
where corrections to "Sailing Directions" appear to be  
necessary.

For general questions on Canadian Coast Guard programs or services, please send an e-mail to:  
[info@dfo-mpo.gc.ca](mailto:info@dfo-mpo.gc.ca)