



Fisheries and Oceans  
Canada

Pêches et Océans  
Canada

Canadian  
Coast Guard

Garde côtière  
canadienne

# NOTICES TO MARINERS PUBLICATION EASTERN EDITION

MONTHLY EDITION N°09  
September 25, 2020



Safety First, Service Always

Published Monthly by the  
**CANADIAN COAST GUARD**  
[www.notmar.gc.ca/subscribe](http://www.notmar.gc.ca/subscribe)

## CONTENTS

	Page
Section 1	General and Safety Information..... 1 - 12
Section 2	Chart Corrections..... 13 - 24
Section 3	Radio Aids to Marine Navigation Corrections ..... 25
Section 4	Sailing Directions and Small Craft Guide Corrections..... 26 - 40
Section 5	List of Lights, Buoys and Fog Signals Corrections..... 41 - 45

Notices to Mariners Publication  
Eastern Edition  
Monthly Edition N°09/2020

**Published under the authority of:**  
Canadian Coast Guard Programs  
Aids to Navigation and Waterways  
Fisheries and Oceans Canada  
Montreal, Quebec  
H2Y 2E7

© Her Majesty the Queen in Right of Canada, 2020  
Fs152-5E-PDF  
ISSN 1719-7678

Available on the Notices to Mariners website:  
[www.notmar.gc.ca](http://www.notmar.gc.ca)

Disponible en français :  
Publication des Avis aux navigateurs  
Édition de l'Est  
Édition mensuelle N°09/2020

## EXPLANATORY NOTES

**Geographical positions** refer directly to the graduations of the largest scale Canadian Hydrographic Service chart unless otherwise indicated.

**Bearings** refer to the true compass and are measured clockwise from 000° (North) clockwise to 359°; those relating to lights are from seaward.

**Visibility** of lights is that in clear weather.

**Depths** - The units used for soundings (metres, fathoms or feet) are stated in the title of each chart.

**Elevations** are normally given above Higher High Water, Large Tide unless otherwise indicated.

**Distances** may be calculated as follows:

1 nautical mile = 1,852 metres (6,076.1 feet)

1 statute mile = 1,609.3 metres (5,280 feet)

1 metre = 3.28 feet

**Temporary and Preliminary Notices to Mariners** are indicated by a (T) or a (P) in Section 1, respectively. Please note that nautical charts are not amended by the Canadian Hydrographic Service for temporary (T) and preliminary (P) notices. It is recommended that mariners chart these corrections in pencil. For the list of charts affected by (T) & (P) notices, please refer to the index on page ii of the current [Monthly Summary of \(T\) and \(P\) Notices](#) publication.

**Please note that, in addition to the temporary and preliminary changes normally advertised as (T) & (P) notices, there are a few permanent changes to aids to navigation that have been advertised as preliminary Notices to Mariners while charts are being updated for new editions.**

### Marine Information Report & Suggestion Sheet

Mariners are requested to notify the responsible authorities when new or suspected dangers to navigation are discovered, changes observed in aids to navigation or corrections to publications are seen to be necessary. Such communications can be made using the *Marine Information Report & Suggestion Sheet* inserted on the last page of each monthly edition of *Notices to Mariners*.

### Canadian Hydrographic Service (CHS) – Information Published in Section 2 of *Notices to Mariners*

Mariners are advised that only the most critical changes that directly affect safety to navigation are issued in Section 2 – Chart Corrections. This limitation is required to ensure that charts remain as clear and easy to read as possible. As a result, mariners may see minor discrepancies of a non-critical nature between information in official publications. For example, a small change in the nominal range or focal height of a light may not result in the production of a chart correction in *Notices to Mariners*, but may result in a correction in the *List of Lights, Buoys and Fog Signals* publication.

**In the case of a discrepancy between information provided on CHS charts relating to aids to navigation, and the *List of Lights, Buoys and Fog Signals* publication, the latter shall be deemed as containing the most up-to-date information.**

### Canadian Nautical Charts & Publications

A source list of Canadian nautical charts and publications is published in Notice No. 14 of the *Notices to Mariners Annual Edition 2020*. The source supply and the prices effective at the time of printing are listed. For current chart edition dates, please refer to the following website: [www.chs-shc.gc.ca/charts-cartes/paper-papier/index-eng.asp](http://www.chs-shc.gc.ca/charts-cartes/paper-papier/index-eng.asp)

## CHART CORRECTIONS – SECTION 2

Corrections to nautical charts will be listed in numerical order by chart number. Each chart correction listed applies only to that particular chart. Related charts, if any, will have their own specific correction listed separately.

Users should also refer to CHS *Chart 1: Symbols, Abbreviations and Terms* for additional information pertaining to the correction of charts.

The illustration below describes the elements that will comprise a typical Section 2 chart correction:

	Chart Number	Chart Title	Charts latest new edition date	Horizontal Chart Datum	Last Correction
Weekly chart correction date	1202	Cap Eternité à/to Saint-Fulgence – New Edition – 20-MAY-94 – NAD 1927			
	6-Aug-1999				LNM/D 23-Jul-1999
	Add	light Fl G		48°26'36.4"N 70°53'08.6"W	
		(See Chart No 1 P24)	(F2007-107) LL (700)	DFO(6829264-01)	
	Chart action	Chart No 1 reference no.	CCG reference no.	List of light no.	CHS reference no.

The last correction number is identified with the **LNM/D** or Last Notice to **Mariners** Number / Date.

## NOTICES TO MARINERS WEBSITE – MONTHLY EDITIONS, CHART CORRECTIONS, AND CHART PATCHES

The Notices to Mariners website allows users to access the [monthly publications](#), [chart corrections](#), and [chart patches](#).

Users can subscribe for free to the [email notification service](#) to receive notifications when charts of interest are updated, including their patches, as well as when a new monthly edition becomes available online.

In addition, the monthly publication and related files to download, such as chart patches and *Sailing Directions* diagrams, can be obtained all together through the download of a single ZIP file.

## ADVISORY NAVIGATIONAL WARNINGS / NOTICES TO SHIPPING

The Canadian Coast Guard is implementing a number of changes to the aids to navigation system in Canada.

These changes are advertised as Navigational Warnings, formerly called Notices to Shipping<sup>1</sup>, that are broadcast by the Canadian Coast Guard, and are then followed up with Notices to Mariners, then charts are updated by hand correction, reprints or new editions.

Mariners are advised that all relevant Navigational Warnings (NAVWARNs) should be kept until superseded by Notices to Mariners or through revised charts issued by the Canadian Hydrographic Service (CHS).

Navigational Warnings are accessible on the applicable regional page on the Canadian Coast Guard e-Navigation Maritime Information Portal at <http://www.marinfo.gc.ca/e-nav>.

The Canadian Hydrographic Service is reviewing the impact of these changes with the Canadian Coast Guard and together are preparing an action plan on the issuing of chart revisions.

For further information, contact your regional Navigational Warning (NAVWARN) Issuing Desk.

### Atlantic Region

#### \* Port aux Basques MCTS Centre

Canadian Coast Guard  
49 Stadium Rd.  
P.O. Box 99  
Port aux Basques, NL A0M 1C0

Telephone: (709) 695-2168 or 1-800-563-9089  
Facsimile: (709) 695-7784

Email: [NAVWARN.MCTSPortAuxBasques@innav.gc.ca](mailto:NAVWARN.MCTSPortAuxBasques@innav.gc.ca)  
Website: <http://www.marinfo.gc.ca/e-nav>

#### \* Sydney MCTS Centre

Canadian Coast Guard  
1190 Westmount Road  
Sydney, NS B1R 2J6

Telephone: (902) 564-7751 or 1-800-686-8676  
Facsimile: (902) 564-7662

Email: [NAVWARN.MCTSSydney@innav.gc.ca](mailto:NAVWARN.MCTSSydney@innav.gc.ca)  
Website: <http://www.marinfo.gc.ca/e-nav>

### Central Region

#### \* Prescott MCTS Centre

Canadian Coast Guard  
401 King Street West  
P.O. Box 1000  
Prescott, ON K0E 1T0

"C" and "Q" Series  
Telephone: (613) 925-0666  
Facsimile: (613) 925-4519

Email: [NAVWARN.MCTSPrescott@innav.gc.ca](mailto:NAVWARN.MCTSPrescott@innav.gc.ca)  
Website: <http://www.marinfo.gc.ca/e-nav>

### Arctic Region

#### \* Iqaluit MCTS Centre

*Operational from approximately mid-May until late December.*

Canadian Coast Guard  
P.O. Box 189  
Iqaluit, NU X0A 0H0

"A" Series  
Telephone: (867) 979-5269

"H" Series  
Telephone: (867) 979-0310

Facsimile: (867) 979-4264  
Email: [NAVWARN.MCTSIqaluit@innav.gc.ca](mailto:NAVWARN.MCTSIqaluit@innav.gc.ca)  
Website: <http://www.marinfo.gc.ca/e-nav>

\* Service available in English and French.

---

<sup>1</sup> The expression "Notice to Shipping" was changed to "Navigational Warning" in January 2019.

**INDEX**

**SECTION 1 – GENERAL AND SAFETY INFORMATION 1**

Transport Canada – Restricted Speed Area - St. Clair and Detroit Rivers .....	1
Canadian Coast Guard Publication – Comments and Suggestions on Notices to Mariners (Notmar) Publications.....	1
Canadian Hydrographic Service – Modifications to the 2020 Canadian Tide and Current Tables Volume 1 – Atlantic Coast and Bay of Fundy .....	1
Saguenay-St. Lawrence Marine Park and Surrounding Waters – Whale Protection .....	1
Transport Canada – COVID-19 Measures, Updates and Guidance.....	2
Canadian Hydrographic Service – Modifications to the 2020 Canadian Tide and Current Tables, Volume 2 – Gulf of St. Lawrence .....	2
Saguenay–St. Lawrence Marine Park - Beluga Whale Protection: Slowdown Area at the Mouth of the Saguenay Fjord and Area Closure at Baie Sainte-Marguerite.....	3
Gulf of St. Lawrence – Protection of the North Atlantic Right Whale.....	5
*901 Canadian Hydrographic Service – Nautical Charts .....	10
*902 Canadian Hydrographic Service – Electronic Navigational Charts .....	11
*903 Canadian Hydrographic Service – Raster Digital Charts (BSB V3) .....	11
*904 Canadian Hydrographic Service – Canadian Tide and Current Tables – Printing to be Discontinued .....	11
*905 Canadian Hydrographic Service – Chart 1 – Printing to be Discontinued .....	11
*906 Canadian Hydrographic Service – Notices to Mariners for Changes in Buoy Shape .....	12
*907 Canadian Coast Guard– Iridium SafetyCast Service.....	12
*908(T) Smith Falls to/à Kingston including/y compris Tay River to/à Perth – Construction Operations .....	12

**SECTION 2 – CHART CORRECTIONS 13**

**SECTION 3 – RADIO AIDS TO MARINE NAVIGATION CORRECTIONS 25**

*909 Radio Aids to Marine Navigation 2020 (Atlantic, St. Lawrence, Great Lakes, Lake Winnipeg, Arctic and Pacific).....	25
---	----

**SECTION 4 – SAILING DIRECTIONS AND SMALL CRAFT GUIDE CORRECTIONS 26**

**SECTION 5 – LIST OF LIGHTS, BUOYS AND FOG SIGNALS CORRECTIONS 41**

**NUMERICAL INDEX OF CANADIAN CHARTS AFFECTED**

This numerical index lists all nautical charts mentioned in this monthly edition of Notices to Mariners. Only charts appearing in Section 2 of this publication require a chart correction. The appearance of charts in all other sections, particularly those related to the correction of other nautical publications, is included here for reference.

Chart No.	Page	Chart No.	Page	Chart No.	Page	Chart No.	Page
1430	<a href="#">45</a>	4507	<a href="#">18, 19</a>	7573	<a href="#">26, 30</a>		
1513	<a href="#">12</a>	4512	<a href="#">19, 41</a>	7646	<a href="#">26, 27</a>		
1553	<a href="#">13, 45</a>	4514	<a href="#">19</a>	7736	<a href="#">26</a>		
2011	<a href="#">10</a>	4515	<a href="#">19, 20</a>	7737	<a href="#">26</a>		
2018	<a href="#">10</a>	4516	<a href="#">20</a>	7738	<a href="#">26</a>		
2077	<a href="#">10</a>	4519	<a href="#">20</a>	7739	<a href="#">26, 30</a>		
2207	<a href="#">45</a>	4530	<a href="#">21, 42</a>	7760	<a href="#">10, 26, 27, 30</a>		
2259	<a href="#">45</a>	4583	<a href="#">41</a>	7770	<a href="#">26, 29</a>		
2301	<a href="#">33, 37, 38</a>	4592	<a href="#">42</a>	7779	<a href="#">24</a>		
2307	<a href="#">13</a>	4667	<a href="#">41</a>	7782	<a href="#">24</a>		
2311	<a href="#">10, 35, 37</a>	4679	<a href="#">41</a>	7787	<a href="#">10, 27, 29, 30</a>		
2314	<a href="#">38</a>	4820	<a href="#">21</a>	7788	<a href="#">10, 26, 27</a>		
2326	<a href="#">10, 33, 34, 35, 37, 38, 39</a>	4831	<a href="#">21</a>	14883(U.S.)	<a href="#">45</a>		
3477	<a href="#">10</a>	4841	<a href="#">41</a>				
4016	<a href="#">13</a>	4844	<a href="#">41</a>				
4020	<a href="#">13</a>	4862	<a href="#">21, 42</a>				
4025	<a href="#">14</a>	4863	<a href="#">21, 42</a>				
4141	<a href="#">14</a>	4881	<a href="#">41</a>				
4209	<a href="#">14, 15</a>	4906	<a href="#">44</a>				
4302	<a href="#">42</a>	4913	<a href="#">21, 22, 23, 42, 43, 44</a>				
4381	<a href="#">16</a>	4920	<a href="#">23, 43</a>				
4406	<a href="#">44</a>	4935	<a href="#">23, 44</a>				
4428	<a href="#">16, 17, 18</a>	5412	<a href="#">23</a>				
4454	<a href="#">18</a>	5510	<a href="#">10</a>				
4472	<a href="#">44</a>	7082	<a href="#">24</a>				
4483	<a href="#">42</a>	7083	<a href="#">26, 27, 30</a>				

#### TRANSPORT CANADA – RESTRICTED SPEED AREA - ST. CLAIR AND DETROIT RIVERS

(Recurrent publication of notice \*1103/12, originally published in the *Notices to Mariners Publication - Eastern Edition 11/2012*.)

Since November 14, 2012, the restricted speed area currently in place as per the St. Clair and Detroit River Navigation Safety Regulations between the Detroit River light and Peche Island light is reduced in size by relocating the southern point of the restricted speed area from its current location at the Detroit River light to a new location at Bar Point light D33.

#### CANADIAN COAST GUARD PUBLICATION – COMMENTS AND SUGGESTIONS ON NOTICES TO MARINERS (NOTMAR) PUBLICATIONS

In an effort to continuously improve the Notices to Mariners publications and to provide the most efficient service possible, the Notices to Mariners team invites all mariners and other interested parties to submit comments and suggestions on possible improvements to its various publications and services at the following email address: [Notmar.XNCR@dfo-mpo.gc.ca](mailto:Notmar.XNCR@dfo-mpo.gc.ca)

#### CANADIAN HYDROGRAPHIC SERVICE – MODIFICATIONS TO THE 2020 CANADIAN TIDE AND CURRENT TABLES VOLUME 1 – ATLANTIC COAST AND BAY OF FUNDY

(Recurrent publication of notice \*203/20, originally published in the *Notices to Mariners Publication - Eastern Edition 02/2020*.)

The Canadian Hydrographic Service of the Atlantic Region has identified an error in the 2020 Canadian Tide and Current Tables Volume 1 - Atlantic Coast and Bay of Fundy, Tide tables for Holyrood, Newfoundland (station #925)

**Mariners must refer to the following link for updated information on Holyrood's Tide Tables:**  
[http://tides.gc.ca/eng/data/table/2020/wlev\\_sec/925](http://tides.gc.ca/eng/data/table/2020/wlev_sec/925)

#### SAGUENAY-ST. LAWRENCE MARINE PARK AND SURROUNDING WATERS – WHALE PROTECTION

(Recurrent publication of notice \*404/20, originally published in the *Notices to Mariners Publication - Eastern Edition 04/2020*.)

The waters in and around the Saguenay–St. Lawrence Marine Park are well known for the resident endangered beluga population and the wide diversity of whales that migrate there to feed, particularly between April and November.

##### REGULATORY PROTECTION MEASURES

All whale species that are found in the St. Lawrence are protected under the *Marine Mammal Regulations*, pursuant to the *Fisheries Act*. Within the boundaries of the Marine Park, specific measures are set out in the *Marine Activities in the Saguenay–St. Lawrence Marine Park Regulations*, pursuant to the establishment of the *Saguenay–St. Lawrence Marine Park Act*. Any collision with a marine mammal within the Marine Park must immediately be reported to a park warden at 1-866-508-9888. For collisions that occur outside the Marine Park or for any situation involving a marine mammal that is dead or in trouble, contact the emergency network at 1-877-722-5346 or on VHF channel 16.

For more information on the Saguenay–St. Lawrence Marine Park, see notice 5C of the *Notices to Mariners Annual Edition 2020*.

##### VOLUNTARY PROTECTION MEASURES

Provisional measures in effect from May 1 to October 31, 2020. See map at the end of this notice.

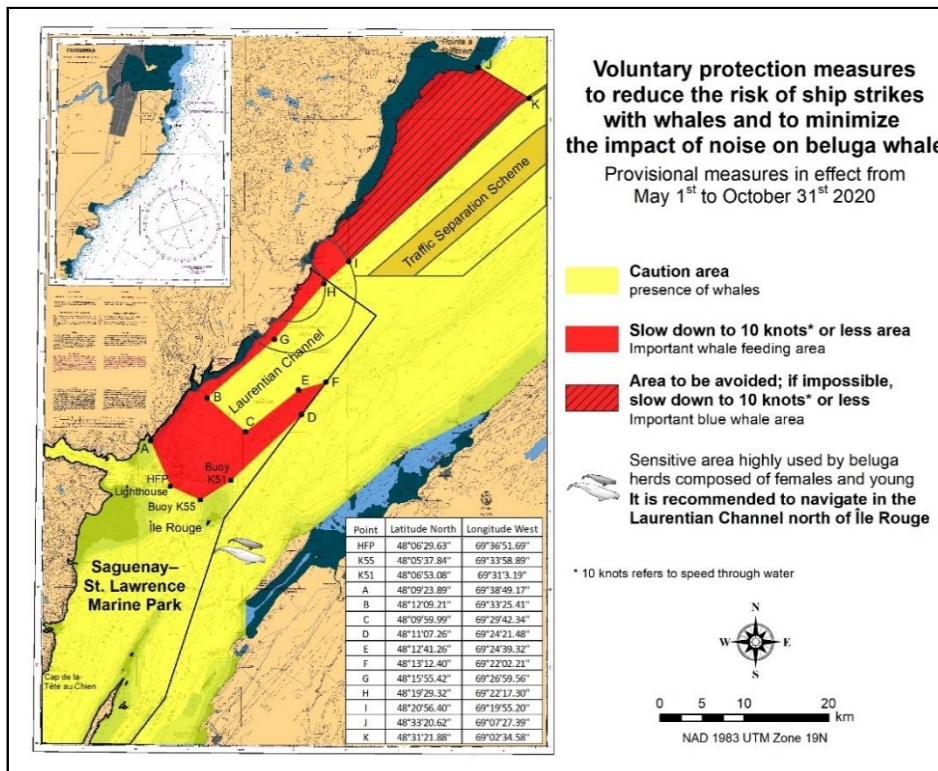
These measures apply to merchant vessels and cruise ships between Pointe à Boisvert and Cap de la Tête au Chien to prevent collisions with whales. These measures should only be taken when they will not jeopardize navigational safety.

**Caution area (yellow area):** To reduce the risk of collisions with whales that can be present anywhere in this area, heightened vigilance of navigators is critical. Posting a lookout is recommended in order to increase the chances of seeing the whales and thus taking necessary measures to avoid them. If bypassing the whales is not possible, slow down and wait for the animals to move away to a distance greater than 400 metres (0.215 nautical miles) before resuming original speed. It is more difficult to see the animals at night therefore increased caution is recommended.



**Slow down to 10 knots or less area (red area):** To reduce the risk of collisions with whales in this feeding area, it is recommended that vessels slow down to a maximum speed through the water of 10 knots and post a lookout. It is further recommended to remain in the Laurentian Channel to the north of Île Rouge to minimize the impact of noise in a sensitive area south of this island, which is highly frequented by herds of beluga whales composed of females and young.

**Area to be avoided (hatched red area):** To reduce noise and the risk of collisions with whales, vessels should avoid transiting through this area which is highly frequented by blue whales, an endangered species. If the area cannot be avoided, slow down to a speed through the water of 10 knots or less.



**TRANSPORT CANADA – COVID-19 MEASURES, UPDATES AND GUIDANCE**

(Recurrent publication of notice \*401/20, originally published in the *Notices to Mariners Publication - Eastern Edition 04/2020*.)

Please refer to the link below for the latest updates to transportation related measures taken by Transport Canada in response to the evolving novel Coronavirus disease (COVID-19):

<https://www.tc.gc.ca/en/initiatives/covid-19-measures-updates-guidance-tc.html>

For travel advice and all other updates, please visit: [Canada.ca/coronavirus](https://Canada.ca/coronavirus)

**CANADIAN HYDROGRAPHIC SERVICE – MODIFICATIONS TO THE 2020 CANADIAN TIDE AND CURRENT TABLES, VOLUME 2 – GULF OF ST. LAWRENCE**

(Recurrent publication of notice \*506/20, originally published in the *Notices to Mariners Publication - Eastern Edition 05/2020*.)

The Canadian Hydrographic Service of the Quebec Region has identified a correction in the 2020 Canadian Tide and Current Tables, Volume 2, Gulf of St. Lawrence, on page 79.

**Mariners should replace a section of Table 3 with the corresponding section annexed below:**

<https://www.notmar.gc.ca/publications/monthly-mensuel/images/ed052020-part1-vol2-p79.pdf>

**SAGUENAY–ST. LAWRENCE MARINE PARK - BELUGA WHALE PROTECTION: SLOWDOWN AREA AT THE MOUTH OF THE SAGUENAY FJORD AND AREA CLOSURE AT BAIE SAINTE-MARGUERITE**

(Recurrent publication of notice \*605/20, originally published in the *Notices to Mariners Publication - Eastern Edition 06/2020*.)

The Saguenay–St. Lawrence Marine Park and its surrounding area are at the heart of endangered beluga whale critical summer habitat. Marine mammal protection measures have been put in place in accordance with the *Marine Activities in the Saguenay–St. Lawrence Marine Park Regulations* within the limits of the Marine Park.

However, important feeding, calving and rearing areas for beluga whales require greater protection to ensure the recovery of the species. The portion of the Saguenay situated between the mouth of the Fjord and Baie Sainte-Marguerite is one of the areas most used by females and their young from May to October. The mouth of the Saguenay is known as a feeding ground and Baie Sainte-Marguerite as a calving and rearing area.

In order to prevent collisions with beluga whales, a compulsory 15-knot slowdown area is in effect from May 1<sup>st</sup> to October 31<sup>st</sup> at the mouth of the Saguenay. To ensure tranquility for female belugas and their young during the critical calving period, access to Baie Sainte-Marguerite is prohibited to all vessels from June 21<sup>st</sup> to September 21<sup>st</sup>, except for special authorizations (see description below).

For safety reasons, *the slowdown area measure at the mouth of the Saguenay Fjord does not apply* to cargo ships (see the monthly edition of *Notice to Mariners* from May to October for voluntary protection measures in the St. Lawrence Estuary). An enhanced vigilance is, however, recommended to all navigators between the mouth of the Saguenay Fjord and Baie Sainte-Marguerite for the protection of beluga whales.

For more information on the Saguenay–St. Lawrence Marine Park, see notice 5C of the *Notices to Mariners Annual Edition 2020* or visit <http://parcmarin.qc.ca/home/>.

**REGULATORY PROTECTION MEASURES — BELUGA WHALE**

**Entire Marine Park Territory:**

- When beluga whales are less than half a nautical mile (926 metres) from a motorized vessel, the vessel must maintain a speed of between 5 and 10 knots.
- All vessels, including human-powered vessels (kayaks and canoes), must continue to move forward and maintain their heading.
- All vessels must maintain a minimum distance of 400 metres from beluga whales at all times.

For more information concerning the regulations, consult: <http://marinepark.ca/protect/#regulations>.

**Mouth of the Saguenay Fjord (Figure 1) — Slowdown Area (area cross-hatched in red):**

- Maximum speed at the mouth of the Saguenay between buoys S7 and S8 and the ferry docks between Baie-Sainte-Catherine and Tadoussac is 15 knots from May 1<sup>st</sup> to October 31<sup>st</sup>.

**Baie Sainte-Marguerite (Figure 2) — Area Closure (red area):**

- From June 21<sup>st</sup> to September 21<sup>st</sup>, vessels must not enter the red area, which follows a line between Cap Nord-Ouest and Cap Sainte-Marguerite.
- Special authorizations are granted only for kayaks, canoes and recreational fishermen who must travel without stopping along a corridor within 10 metres of the shore or in shallow areas.

**VOLUNTARY PROTECTION MEASURES**

**Baie Sainte-Marguerite sector (Figure 2) — Transit Area (area cross-hatched in yellow):**

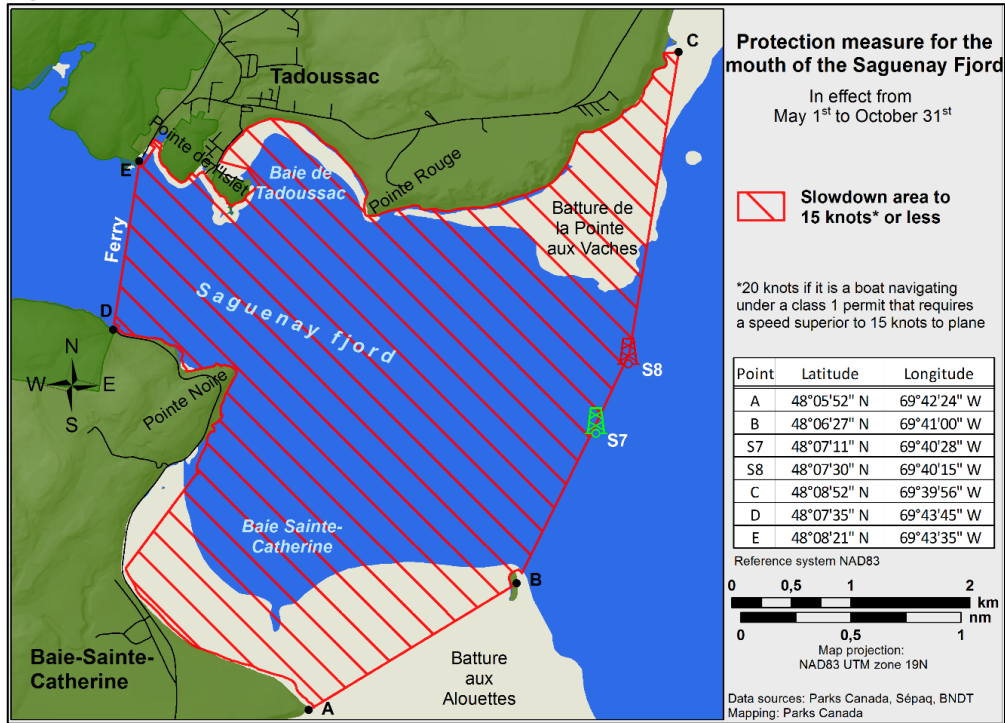
- From June 21<sup>st</sup> to September 21<sup>st</sup>, navigation in this area is recommended at a speed of between 5 and 10 knots without stopping.

The purpose of this transit area is to favour respect of the *Marine Activities in the Saguenay–St. Lawrence Marine Park Regulations*, since beluga whales are often present in the Baie Sainte-Marguerite sector.

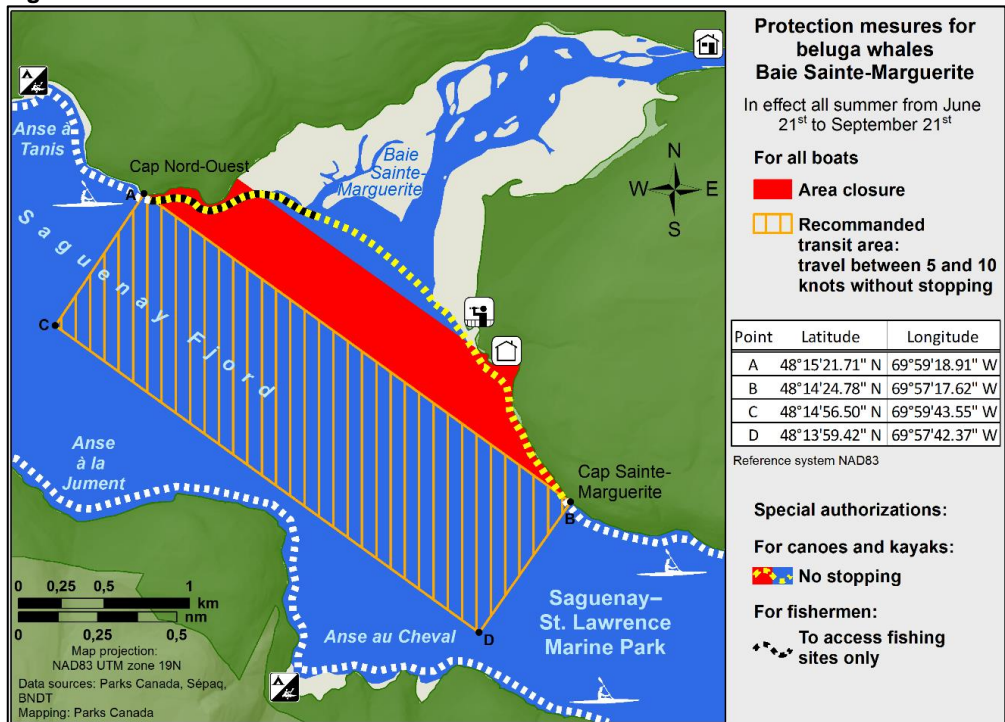
**INFORMATION**

All incidents, including collisions with whales, must be reported without delay by dialling 1-866-508-9888. For any other situation concerning a marine mammal that is either dead or in trouble, contact the emergency network at 1-877-722-5346, or use VHF channel 16.

**Figure 1**



**Figure 2**



## GULF OF ST. LAWRENCE – PROTECTION OF THE NORTH ATLANTIC RIGHT WHALE

(Recurrent publication of notice \*706/20, originally published in the *Notices to Mariners Publication - Eastern Edition 07/2020*.)

Reference: Notice \*504/20 is cancelled.

Due to changing migration patterns of North Atlantic right whales and their increased presence in the Gulf of St. Lawrence, the Government of Canada has established seasonal speed restrictions in specific zones. These speed restrictions are defined as “static zones”, “dynamic shipping zones”, “seasonal management areas”, a trial “voluntary speed restriction zone” and a “restricted area”. [See the map below for details](#).

Note: Navigational Warnings with these speed restrictions are considered to be Notices to Shipping, which vessels **must follow** as per the *Interim Order Protecting North Atlantic Right Whales (Eubalaena Glacialis) in the Gulf of St Lawrence* and the *Interim Order for the protection of North Atlantic Right Whales (Eubalaena Glacialis) in and near the Shediac Valley* for the restricted area.

Speed restriction zones are described in monthly Notices to Mariners (NOTMARs), which are published by the Canadian Coast Guard (CCG). The status of these zones is broadcast through Navigational Warnings (NAVWARNs), which are published by the CCG’s Marine Communications and Traffic Services (MCTS) Centres.

### Changes to speed restriction zones

Based on consultations with industry and on scientific data, changes to the speed restriction zones will be effective from April 28<sup>th</sup>, 2020, while the [restricted area](#) will be implemented as per the *Interim Order for the Protection of North Atlantic Right Whales (Eubalaena glacialis) in and near the Shediac Valley*.

- Portions of the static zones located north and south of dynamic shipping zone E are now changed to seasonal management area 1 (north of dynamic shipping zone E) and seasonal management area 2 (south of dynamic shipping zone E).
- A trial voluntary speed restriction of 10.0 knots over the ground spanning from Cabot Strait (a line running from Cape North NS to Cape Ray NL) to the eastern edge of dynamic shipping zone E, at the beginning and end of the season.
- A restricted area located in and near the Shediac Valley, determined based on aggregation of North Atlantic right whales.

Please refer to the latest NAVWARN issued by the CCG-MCTS for all speed restrictions currently in effect.

### Speed Restriction Measures for 2020

These restrictions will be in effect from **April 28 to November 15, 2020**.

#### Static zones

In the static zones, **all** vessels above **13 m** in length overall (LOA) must proceed at a speed of not more than 10.0 knots over the ground.

#### Coordinates for the northern static zone:

- 50° 20' N 065° 00' W
- 49° 13' N 065° 00' W
- 48° 40' N 064° 13' W
- 48° 40' N 062° 40' W
- 48° 03' N 061° 07.5' W
- 47° 58.1' N 061° 03.5' W
- 48° 00' N 061° 00' W
- 49° 04' N 061° 00' W
- 49° 04' N 062° 00' W
- 49° 43' N 063° 00' W
- 50° 20' N 063° 00' W

#### Coordinates for the southern static zone:

- 48° 40' N 065° 00' W
- 48° 40' N 062° 40' W
- 48° 03' N 061° 07.5' W
- 47° 58.1' N 061° 03.5' W
- 47° 10' N 062° 30' W
- 47° 10' N 065° 00' W

Mariners will be notified ahead via a NAVWARN should the speed restriction status change, due to inclement weather.

Within any static zone that is not subject to a speed restriction, mariners may proceed at a safe operational speed. Mariners are however encouraged to take into consideration the potential for their vessel striking North Atlantic right whales when considering a “safe operational speed” during navigation.

### Dynamic shipping zones

There are five dynamic shipping zones (DSZ) located in the routing systems north and south of Anticosti Island: A, B, C, D and E

#### Coordinates for the dynamic shipping zones:

- |   |   |   |
|---|---|---|
| <b>Zone A</b> <ul style="list-style-type: none"><li>• 49° 41' N 065° 00' W</li><li>• 49° 20' N 065° 00' W</li><li>• 49° 11' N 064° 00' W</li><li>• 49° 22' N 064° 00' W</li></ul> | <b>Zone B</b> <ul style="list-style-type: none"><li>• 49° 22' N 064° 00' W</li><li>• 49° 11' N 064° 00' W</li><li>• 48° 48' N 063° 00' W</li><li>• 49° 00' N 063° 00' W</li></ul>   | <b>Zone C</b> <ul style="list-style-type: none"><li>• 49° 00' N 063° 00' W</li><li>• 48° 48' N 063° 00' W</li><li>• 48° 24' N 062° 00' W</li><li>• 48° 35' N 062° 00' W</li></ul> |
| <b>Zone D</b> <ul style="list-style-type: none"><li>• 50° 16' N 064° 00' W</li><li>• 50° 00' N 064° 00' W</li><li>• 49° 56' N 063° 00' W</li><li>• 50° 16' N 063° 00' W</li></ul> | <b>Zone E</b> <ul style="list-style-type: none"><li>• 48° 35' N 062° 00' W</li><li>• 48° 24' N 062° 00' W</li><li>• 48° 03' N 061° 07.5' W</li><li>• 47° 58.1' N 061° 03.5' W</li><li>• 48° 00' N 061° 00' W</li><li>• 48° 10.5' N 061° 00' W</li></ul> |   |

If the Government of Canada does not detect North Atlantic right whales in these zones, vessels may transit through them at a safe operational speed.

When the Government of Canada detects a North Atlantic right whale in a dynamic shipping zone, vessels above **13 m** in length overall (LOA):

- will be notified through a NAVWARN; and
- must proceed at a speed of not more than 10.0 knots over the ground within that zone.

### Speed restrictions in the dynamic shipping zones

The detection of North Atlantic right whales in one or more dynamic shipping zone(s), will trigger a speed restriction in the concerned zone(s). The speed restriction in the dynamic shipping zone(s) will be in effect for 15 days from the date of issuance of the NAVWARN. We may extend a speed restriction past the 15 days if North Atlantic right whales continue to be detected.

When a NAVWARN is issued implementing a speed restriction in one or more dynamic shipping zone(s), vessels above **13 m** in length (LOA) must not exceed a speed of 10.0 knots over the ground.

Within any zone that is not subject to a speed restriction, mariners may proceed at a safe operational speed. Mariners are however encouraged to take into consideration the potential for their vessel striking North Atlantic right whales when considering a “safe operational speed” during navigation.

### Seasonal management areas

Seasonal management area 1 (SMA-1) and seasonal management area 2 (SMA-2) are speed restriction areas located north and south of dynamic shipping zone E, respectively.

Within seasonal management areas, vessels above **13 m** in length (LOA):

- must restrict their speed so as not to exceed 10.0 knots over the ground from April 28th to June 30th, 2020; and
- are allowed to proceed at safe operational speed from July 1st to November 15th, 2020, unless a North Atlantic right whale is detected. If a whale is detected, a speed restriction of 10.0 knots over the ground will be triggered for 15 days from the date of issuance of the NAVWARN. The speed restriction may be extended past the 15 days if North Atlantic right whales continue to be detected.



MONTHLY NOTICES TO MARINERS  
EASTERN EDITION 09/2020  
SECTION 1 – GENERAL AND SAFETY INFORMATION

---

Coordinates for the SMA-1:

- 49° 04' N 062° 00' W
- 49° 04' N 061° 00' W
- 48° 10.5' N 061° 00' W
- 48° 35' N 062° 00' W

Coordinates for the SMA-2:

- 48° 24' N 062° 00' W
- 48° 03' N 061° 07.5' W
- 47° 58.1' N 061° 03.5' W
- 47° 26.69' N 062° 00' W

**Restricted area**

In the summer months, an important proportion of the total North Atlantic right whale population gathers for feeding and surface activity near the [Shediac Valley](#). Since this makes the North Atlantic right whale more susceptible to vessel collisions, a mandatory restricted area will be put in place in and near the [Shediac Valley](#). The effective date and exact location of the area were based on the observed distribution of the whales. *The Interim Order for the Protection of North Atlantic Right Whales (Eubalaena glacialis) in and near the Shediac Valley* will provide the necessary details. This information will also be communicated to mariners through navigational warnings and notices to fish harvesters.

Vessels above **13 m** in length (LOA) will be required to:

- avoid the area unless they are part of the exceptions listed in the IO;
- exempted vessels transiting the area must do so at a speed not exceeding 8.0 knots over the ground.

The location and dimension of the restricted area will not be modified.

**Trial voluntary speed restriction in Cabot Strait**

To coincide with the North Atlantic right whales entering and exiting the Gulf of St. Lawrence, we are putting in place a trial voluntary speed restriction in Cabot Strait from April 28th to June 15th, 2020, and from October 1st to November 15th, 2020.

- During this period, vessels above 13 m in length (LOA) will be asked to voluntarily reduce their speed so as to not exceed 10.0 knots over the ground.
- Outside of the restriction period, vessels will be able to proceed at safe operational speeds.

**Voluntary speed restriction zone coordinates:**

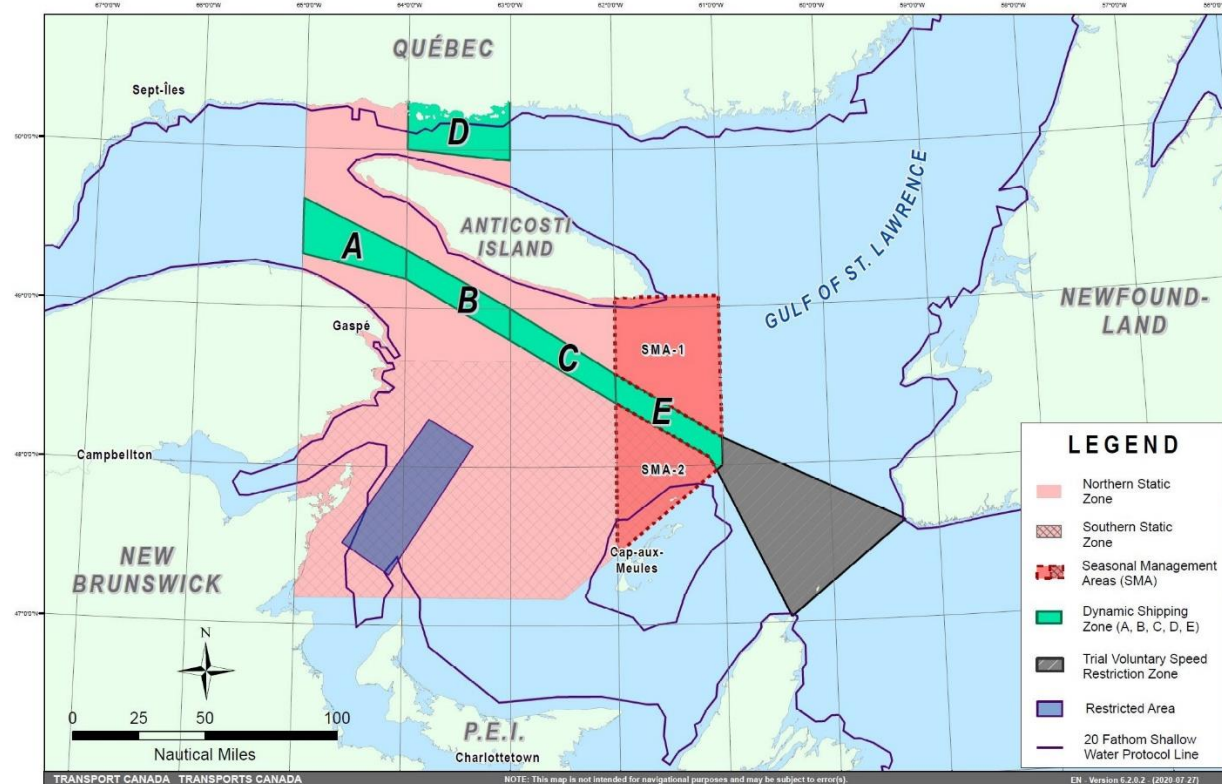
- 48° 10.5' N 061° 00' W
- 47° 37.2' N 059° 18.5' W
- 47° 02' N 060° 23.7' W
- 47° 58.1' N 061° 03.5' W
- 48° 00' N 061° 00' W

**Map of the Gulf of St. Lawrence**

The following map shows

- the speed restriction zone, in pink (static zones);
- the dynamic shipping zones, in green;
- the seasonal management areas, in dark pink;
- the trial voluntary speed restriction zone, in grey; and
- the restricted area, in dark blue.

MONTHLY NOTICES TO MARINERS  
EASTERN EDITION 09/2020  
SECTION 1 – GENERAL AND SAFETY INFORMATION



Map showing the two static zones (north and south), the five dynamic shipping zones (A, B, C, D and E), the seasonal management areas, the restricted area, the trial voluntary speed restriction zone and the 20 fathom shallow water protocol line.

This map is for visual representation only and is not to be used for navigation or enforcement.

### NAVWARN broadcasts

The CCG-MCTS issues and publishes NAVWARNs:

- by radio broadcast; and
- online at [Canada's Maritime Information Portal](#) and its [Navigational Warnings](#) site.

Mariners must ensure they have accurate and up-to-date information about the protection of the North Atlantic right whale, as in all applicable NOTMARS and NAVWARNs.

For the North Atlantic right whale speed restriction, the NAVWARN that is currently in effect will be provided to vessels subject to the *Vessel Traffic Services Zone Regulations* or the *Eastern Canada Vessel Traffic Services Zone Regulations*:

### Outbound vessels

- at Calling-in-Point 10 (St-Laurent); or
- upon a departure downstream from the Quebec pilot station (including the Saguenay River, Chaleur Bay, Miramichi Bay, etc.)

### Inbound vessels

- when a clearance to enter Canadian waters is granted

### **Vessels in transit**

- at the last reporting point prior to entering the speed restriction area; and/or
- at 10 nautical miles prior to entering the speed restriction zone

For those vessels not subject to the above-mentioned regulations, vessel operators are required to monitor broadcasts by the Canadian Coast Guard's Marine Communications and Traffic Services (MCTS) network for the most up to date information. For marine radio frequencies and broadcast times, information may be found in the [Radio Aids to Marine Navigation](#) publication.

### **Aids to navigation**

The Canadian Coast Guard is currently testing virtual Automatic Identification System (AIS) aids to navigation (AIS AtoN) in specific areas. These aids notify mariners of a dynamic shipping zone subject to a speed restriction, per NOTMAR 819(T)/2016.

Each dynamic shipping zone is delimited by four virtual AIS AtoN, which can be displayed on a ship's navigation equipment, such as

- Electronic Chart Display and Information System (ECDIS);
- Electronic Chart System (ECS);
- RADAR;
- Minimum Keyboard Display (MKD); and
- Electronic Nautical Chart (ENC).

The Canadian Coast Guard broadcasts the virtual AIS AtoN only when a speed restriction is in effect in one or more testing zones.

Mariners must select the virtual AIS AtoN symbol to view a message such as "SectA1 Spd Lim 10 kt." This message refers to a speed restriction in effect for a specific zone.

Note: This system is not the primary way we communicate this information.

### **Compliance and enforcement**

You must comply with the Interim Orders made pursuant to the *Canada Shipping Act, 2001*, and any NAVWARNs broadcasted and published by the Canadian Coast Guard relating to the Interim Orders, aimed at regulating the navigation for the purposes of protecting the North Atlantic right whales.

If you do not comply with the Interim Orders or instructions in the NAVWARNs related to the Interim Orders, you could face:

- administrative monetary penalties up to a maximum of CAN \$250,000; and/or
- penal sanctions under the *Canada Shipping Act, 2001*.

If your vessel appears to have violated the speed restriction, Transport Canada Marine Safety inspectors will review all information provided through AIS and seek an explanation from the master.

No exemptions to the speed restriction will be granted in advance. However, if a deviation from the speed restrictions is necessary for safety reasons, the following information must be entered into the bridge logbook:

- Reasons for deviation
- Speed at which vessel is operated
- Latitude and longitude at time of deviation
- Time and duration of deviation
- Master of the vessel shall sign and date the bridge logbook entry



MONTHLY NOTICES TO MARINERS  
EASTERN EDITION 09/2020  
SECTION 1 – GENERAL AND SAFETY INFORMATION

---

For any deviation, Transport Canada will review and consider reasons such as

- Navigating to ensure vessel safety;
- Weather conditions;
- Force majeure (unforeseeable circumstances); and
- Responding to emergencies.

**Report a North Atlantic right whale sighting**

If you see a North Atlantic right whale that is entangled, injured or dead, please report it to your nearest Canadian Coast Guard Marine Communications and Traffic Services Centre, or as follows:

**Southern part of the Gulf of St. Lawrence**

Marine Animal Response Society  
Telephone: 1-866-567-6277

**Newfoundland and Labrador**

Whale Release and Strandings  
Telephone: 1-888-895-3003

**For the Québec Sector**

Marine Mammal Emergencies  
Telephone: 1-877-722-5346

**If you see live, free-swimming whales**

- Call 1-902-440-8611 (local) or 1-844-800-8568 (toll free)
- Email: [XMARWhalesightings@dfo-mpo.gc.ca](mailto:XMARWhalesightings@dfo-mpo.gc.ca)

**Please consult WhaleMap for the latest right whale observations:**

<https://whalemap.ocean.dal.ca/>

**\*901 CANADIAN HYDROGRAPHIC SERVICE – NAUTICAL CHARTS**

CHARTS	MAIN TITLE	SCALE	PUBLISHED	CAT#	PRICE
<b>New Charts</b>					
2326	Middlebrun Bay to/à Washington Island	1:100 000	24-JUL-2020	3	20.00
7787	St. Roch and/et Rasmussen Basins	1:150 000	03-JUL-2020	4	20.00
7788	Simpson Strait to/a Rasmussen Basin	1:150 000	03-JUL-2020	4	20.00
<b>New Editions</b>					
2011	Belleville Harbour	1:6 000	31-JUL-2020	3	11.50
2018	Lower Gap to/à Adolphus Reach	1:30 000	31-JUL-2020	3	20.00
2077	Lake Ontario/Lac Ontario (Western Portion/Partie Ouest)	1:100 000	17-JUL-2020	3	20.00
3477	Plans - Gulf Islands	1:15 000	31-JUL-2020	2	20.00
5510	Puvirnituq et les approches / and Approches	1:60 000	24-JUL-2020	4	20.00
<b>Charts Permanently Withdrawn</b>					
2311	Thunder Cape to/à Pigeon River				
7760	St. Roch and/et Rasmussen Basins				

**\*902 CANADIAN HYDROGRAPHIC SERVICE – ELECTRONIC NAVIGATIONAL CHARTS**

S-57 ENC NUMBER	CHART TITLE
<b>NEW PRODUCTS</b>	
CA479256	Île Mistanoque aux/to Îles Mack
CA479257	Continuation A
<b>WITHDRAWN PRODUCTS</b>	
CA479258	Passage Saint-Augustin

**\*903 CANADIAN HYDROGRAPHIC SERVICE – RASTER DIGITAL CHARTS (BSB V3)**

CHARTS	MAIN TITLE	SCALE	PUBLISHED
<b>New Charts</b>			
RM-2326	Middlebrun Bay to/à Washington Island	1:100 000	24-JUL-2020
RM-7787	St. Roch and/et Rasmussen Basins	1:150 000	03-JUL-2020
RM-7788	Simpson Strait to/a Rasmussen Basin	1:150 000	03-JUL-2020
<b>New Editions</b>			
RM-2011	Belleville Harbour	1:6 000	31-JUL-2020
RM-2018	Lower Gap to/à Adolphus Reach	1:30 000	31-JUL-2020
RM-2077	Lake Ontario/Lac Ontario (Western Portion/Partie Ouest)	1:100 000	17-JUL-2020
RM-3477	Plans - Gulf Islands	1:15 000	31-JUL-2020
RM-5510	Puvirnituk et les approches / and Approches	1:60 000	24-JUL-2020
<b>Charts Permanently Withdrawn</b>			
RM-2311	Thunder Cape to/à Pigeon River		

**\*904 CANADIAN HYDROGRAPHIC SERVICE – CANADIAN TIDE AND CURRENT TABLES – PRINTING TO BE DISCONTINUED**

Due to the availability of the *Canadian Tide and Current Tables* as [viewable and printable PDF files](#) on charts.gc.ca for each complete volume and [additional information in different formats](#) (predictions, observations in tables, and graphics) on tides.gc.ca, the Canadian Hydrographic Service is permanently discontinuing the printing of all volumes of *Canadian Tide and Current Tables* starting January 2021.

Advances in technology bring a new era of marine navigation with a focus on digital and electronic products. The Canadian Hydrographic Service is transforming the way it delivers quality data and services to clients, in a timely manner, to support decision-making.

For more information, visit [www.charts.gc.ca](http://www.charts.gc.ca).

**\*905 CANADIAN HYDROGRAPHIC SERVICE – CHART 1 – PRINTING TO BE DISCONTINUED**

Due to the availability of *Chart 1: Symbols, Abbreviations and Terms* as both [viewable and printable PDF files](#) and [HTML](#) format on charts.gc.ca, the Canadian Hydrographic Service is permanently discontinuing the printing of *Chart 1: Symbols, Abbreviations and Terms* starting January 2021.

Advances in technology bring a new era of marine navigation with a focus on digital and electronic products. The Canadian Hydrographic Service is transforming the way it delivers quality data and services to clients, in a timely manner, to support decision-making.

For more information, visit [www.charts.gc.ca](http://www.charts.gc.ca).

**\*906 CANADIAN HYDROGRAPHIC SERVICE – NOTICES TO MARINERS FOR CHANGES IN BUOY SHAPE**

As part of the CHS Digital Transformation and for the sake of economy, CHS will no longer systematically issue Notices to Mariners (NTM) for buoy shape changes only. These changes will, however, be applied to electronic navigation charts (ENCs) where applicable. The paper and raster versions will be updated during the New Edition process.

**\*907 CANADIAN COAST GUARD– IRIDIUM SAFETYCAST SERVICE**

The International Maritime Organization (IMO) and the International Hydrographic Organization (IHO) announced the establishment of the Iridium SafetyCast Service as a recognized mobile satellite service in the Global Maritime Distress and Safety System (GMDSS).

Effective October 1<sup>st</sup> 2020, an Iridium SafetyCast Service for broadcasting navigational warnings in the English language will be declared to be in an "Initial Operational Capability" (IOC) for Canada's Arctic NAVAREAs XVII and XVIII.

During the Iridium SafetyCast IOC period, navigational warnings will be broadcast in accordance with the Revised Joint IMO/IHOWMO Maritime Safety Information Manual on an intermittent and test basis. The IOC period is a test and evaluation stage which is necessary to ensure navigational warnings are processed and promulgated in a timely and appropriate manner. NAVAREAs XVII and XVIII will broadcast Iridium SafetyCast messages to vessels with an approved SafetyCast receiver. On vessels with Iridium GMDSS terminals installed, mariners are advised to check their manufacturer's operation manuals to obtain information on the setting of their SafetyCast receivers to receive relevant SafetyCast messages.

During this period, the Canadian Coast Guard will not guarantee service availability.

Determination when NAVAREAs XVII and XVIII is ready to establish "Full Operational Capability" (FOC) will come at a later date and will be announced through a subsequent Notice to Mariners.

**\*908(T) SMITH FALLS TO/À KINGSTON INCLUDING/Y COMPRIS TAY RIVER TO/À PERTH – CONSTRUCTION OPERATIONS**

Reference Chart: 1513

Temporary closures of up to 30 minutes are expected in the navigation channel at the Third Crossing Bridge construction site. Spotter boats will be positioned 100 metres north and south of the bridge during work hours.

Installation of a temporary causeway is taking place between 44° 15.41'N 076° 28.78'W and 44° 15.52'N 076° 27.99'W.

(NW-C-3042-19, NW-C-1479-20)

MONTHLY NOTICES TO MARINERS  
EASTERN EDITION 09/2020  
SECTION 2 – CHART CORRECTIONS

---

**1553 - Île D'Arcy à/to Balmer Bay - Sheet/Feuille 2 - New Edition - 31-MAR-2006 - NAD 1983**

04-SEP-2020

LNMD. 14-AUG-2020

Delete light Fl  
(See Chart No. 1, P1) 45°55'49.3"N 077°15'23.6"W  
*(B2020039) LL(1310) DFO(6604683-01)*

**2307 - Coppermine Point to/à Cape Gargantua - New Edition - 09-JUN-2006 - NAD 1983**

18-SEP-2020

LNMD. 15-MAY-2020

Add sounding of 2½ fathoms, Rep (2020)  
(See Chart No. 1, I10) 47°21'14.5"N 084°41'54.9"W  
This notice affects Electronic Navigational Chart: CA373110  
*DFO(6604684-01)*

**4016 - Saint-Pierre to / à St. John's - New Edition - 06-JUN-2003 - NAD 1983**

18-SEP-2020

LNMD. 17-JUL-2020

Delete light F R  
(See Chart No. 1, P1) 47°39'52.0"N 054°43'44.0"W  
This notice affects Electronic Navigational Chart: CA376316  
*DFO(6309183-01)*

**4020 - Strait of Belle Isle / Détroit de Belle Isle - New Edition - 26-JUL-2002 - NAD 1983**

25-SEP-2020

LNMD. 06-SEP-2019

Delete depth of 5 fathoms  
(See Chart No. 1, I10) 51°20'27.0"N 056°05'15.0"W  
*DFO(6309095-08)*

Add depth of 2 fathoms, 3 feet  
(See Chart No. 1, I10) 51°20'24.5"N 056°05'24.1"W  
*DFO(6309095-09)*

Delete depth of 6 fathoms, 4 feet  
(See Chart No. 1, I10) 51°20'33.6"N 055°36'26.4"W  
*DFO(6309095-11)*

Add depth of 4 fathoms, 5 feet  
(See Chart No. 1, I10) 51°20'33.5"N 055°36'29.6"W  
*DFO(6309095-12)*

Add depth of 4 fathoms, 4 feet  
(See Chart No. 1, I10) 51°29'04.8"N 055°29'06.2"W  
This notice affects Electronic Navigational Chart: CA376094  
*DFO(6309095-15)*

Add depth of 5 fathoms  
(See Chart No. 1, I10) 51°28'49.5"N 055°28'55.3"W  
This notice affects Electronic Navigational Chart: CA376094  
*DFO(6309095-17)*

Add rock which covers and uncovers with drying height unknown  
(See Chart No. 1, K11) 51°32'33.2"N 055°27'30.1"W  
This notice affects Electronic Navigational Chart: CA376094  
*DFO(6309095-19)*

MONTHLY NOTICES TO MARINERS  
EASTERN EDITION 09/2020  
SECTION 2 – CHART CORRECTIONS

---

<b>4025 - Cap Whittle à/to Havre-Saint-Pierre et/and Île d'Anticosti - New Edition - 28-MAR-2014 - NAD 1983</b>		
18-SEP-2020		LNM/D. 14-FEB-2020
Add	depth of 15 metres 6 decimetres (See Chart No. 1, I10) This notice affects Electronic Navigational Chart: CA279043, CA379093, CA579098	50°10'32.9"N 061°53'08.9"W  <i>DFO(6410447-04)</i>
Add	depth of 19 metres 6 decimetres (See Chart No. 1, I10) This notice affects Electronic Navigational Chart: CA279043, CA379093, CA579098	50°09'58.4"N 061°53'15.1"W  <i>DFO(6410447-05)</i>
Add	depth of 16 metres 6 decimetres (See Chart No. 1, I10) This notice affects Electronic Navigational Chart: CA279043, CA379093, CA579098	50°09'55.8"N 061°50'41.9"W  <i>DFO(6410447-17)</i>
 <b>4141 - Grand Bay to / à Evandale including / y compris Belleisle Bay - Sheet / Feuille B-C - New Edition - 30-OCT-2009 - NAD 1983</b>		
18-SEP-2020		LNM/D. 13-MAR-2020
Affix	patch Download Patch - <a href="ftp://ftp.dfo-mpo.gc.ca/patches/4141_6309234_1_202008191233.pdf">ftp://ftp.dfo-mpo.gc.ca/patches/4141_6309234_1_202008191233.pdf</a>	45°20'50.0"N 066°13'30.0"W  <i>DFO(6309234-01)</i>
 <b>4209 - Lockeport - New Edition - 30-DEC-2011 - NAD 1983</b>		
25-SEP-2020		LNM/D. 24-MAY-2019
Add	depth of 3.7 metres (See Chart No. 1, I10) This notice affects Electronic Navigational Chart: CA576040	43°42'07.7"N 065°06'22.2"W  <i>DFO(6309104-02)</i>
 <b>4209 - Lockeport Harbour - New Edition - 30-DEC-2011 - NAD 1983</b>		
25-SEP-2020		LNM/D. 24-MAY-2019
Replace	depth of 4.4 metres with depth of 3.7 metres (See Chart No. 1, I10)	43°42'07.7"N 065°06'22.2"W  <i>DFO(6309104-03)</i>
Delete	depth of 2.4 metres (See Chart No. 1, I10) This notice affects Electronic Navigational Chart: CA576040	43°42'16.7"N 065°06'28.3"W  <i>DFO(6309104-04)</i>
Add	depth of 1.7 metres (See Chart No. 1, I10) This notice affects Electronic Navigational Chart: CA576040	43°42'17.4"N 065°06'28.6"W  <i>DFO(6309104-05)</i>
Add	depth of 0.8 metres (See Chart No. 1, I10) This notice affects Electronic Navigational Chart: CA576040	43°42'41.3"N 065°06'34.6"W  <i>DFO(6309104-06)</i>
Add	depth of 1.3 metres (See Chart No. 1, I10) This notice affects Electronic Navigational Chart: CA576040	43°41'32.5"N 065°05'30.7"W  <i>DFO(6309104-07)</i>

MONTHLY NOTICES TO MARINERS  
EASTERN EDITION 09/2020  
SECTION 2 – CHART CORRECTIONS

---

Add	depth of 5.8 metres (See Chart No. 1, I10) This notice affects Electronic Navigational Chart: CA576040	43°41'06.0"N 065°05'23.8"W  <i>DFO(6309104-08)</i>
Delete	depth of 5.2 metres (See Chart No. 1, I10) This notice affects Electronic Navigational Chart: CA576040	43°41'15.0"N 065°04'48.7"W  <i>DFO(6309104-09)</i>
Add	depth of 3.1 metres (See Chart No. 1, I10) This notice affects Electronic Navigational Chart: CA576040	43°41'15.4"N 065°04'47.7"W  <i>DFO(6309104-10)</i>
Add	depth of 5.2 metres (See Chart No. 1, I10) This notice affects Electronic Navigational Chart: CA576040	43°39'34.3"N 065°05'40.3"W  <i>DFO(6309104-11)</i>
Add	depth of 1.3 metres (See Chart No. 1, I10) This notice affects Electronic Navigational Chart: CA576040	43°39'03.4"N 065°07'50.2"W  <i>DFO(6309104-12)</i>
Add	depth of 3.2 metres (See Chart No. 1, I10) This notice affects Electronic Navigational Chart: CA576040	43°41'21.3"N 065°02'13.1"W  <i>DFO(6309104-13)</i>
Add	depth of 2.9 metres (See Chart No. 1, I10) This notice affects Electronic Navigational Chart: CA576040	43°40'46.7"N 065°01'30.4"W  <i>DFO(6309104-14)</i>
Delete	depth of 5.8 metres (See Chart No. 1, I10) This notice affects Electronic Navigational Chart: CA576040	43°40'23.0"N 065°02'05.4"W  <i>DFO(6309104-15)</i>
Add	rock which covers and uncovers with drying height of 0.1 metres (See Chart No. 1, K11) This notice affects Electronic Navigational Chart: CA576040	43°40'22.3"N 065°02'02.0"W  <i>DFO(6309104-16)</i>
<b>4209 - Shelburne Harbour - New Edition - 30-DEC-2011 - NAD 1983</b>		
25-SEP-2020		LNM/D. 24-MAY-2019
Add	depth of 1.9 metres (See Chart No. 1, I10) This notice affects Electronic Navigational Chart: CA576039	43°39'06.1"N 065°17'02.9"W  <i>DFO(6309104-01)</i>
Affix	patch  Download Patch - <a href="ftp://ftp.dfo-mpo.gc.ca/patches/4209_6309104_17_202006111302.pdf">ftp://ftp.dfo-mpo.gc.ca/patches/4209_6309104_17_202006111302.pdf</a> This notice affects Electronic Navigational Chart: CA576039	in the title box below the Symbols and Abbreviations note  <i>DFO(6309104-17)</i>

MONTHLY NOTICES TO MARINERS  
EASTERN EDITION 09/2020  
SECTION 2 – CHART CORRECTIONS

---

**4381 - Mahone Bay - New Edition - 30-AUG-2019 - NAD 1983**

18-SEP-2020

LNM/D. 27-MAR-2020

Add submarine power cable joining 44°31'38.7"N 064°15'30.0"W  
(See Chart No. 1, L31.1) 44°31'34.5"N 064°15'42.6"W  
44°31'14.5"N 064°15'33.7"W  
44°31'03.5"N 064°15'44.6"W  
44°31'05.0"N 064°16'08.3"W  
and 44°31'00.0"N 064°16'17.8"W

This notice affects Electronic Navigational Chart: CA476199

*DFO(6309171-01)*

Delete depth of 3.4 metres 44°30'59.0"N 064°16'59.5"W  
(See Chart No. 1, I10)  
This notice affects Electronic Navigational Chart: CA476199

*DFO(6309171-02)*

Add depth of 3 metres 44°31'01.2"N 064°17'00.0"W  
(See Chart No. 1, I10)  
This notice affects Electronic Navigational Chart: CA476199

*DFO(6309171-03)*

Replace depth of 3.2 metres with depth of 2.5 metres 44°23'32.5"N 064°13'43.7"W  
(See Chart No. 1, I10)  
This notice affects Electronic Navigational Chart: CA476199

*DFO(6309171-04)*

**4428 - Havre de Natashquan et les approches/and Approaches - New Edition - 15-FEB-2008 - NAD 1983**

18-SEP-2020

LNM/D. 01-NOV-2019

Add depth of 9 metres 8 decimetres 50°10'28.2"N 061°52'41.2"W  
(See Chart No. 1, I10)  
This notice affects Electronic Navigational Chart: CA379093, CA579098

*DFO(6410447-01)*

Add depth of 14 metres 3 decimetres 50°10'32.7"N 061°52'25.5"W  
(See Chart No. 1, I10)  
This notice affects Electronic Navigational Chart: CA579098

*DFO(6410447-02)*

Add depth of 9 metres 3 decimetres 50°10'39.1"N 061°52'28.0"W  
(See Chart No. 1, I10)  
This notice affects Electronic Navigational Chart: CA579098

*DFO(6410447-03)*

Add depth of 15 metres 6 decimetres 50°10'32.9"N 061°53'08.9"W  
(See Chart No. 1, I10)  
This notice affects Electronic Navigational Chart: CA279043, CA379093, CA579098

*DFO(6410447-04)*

Add depth of 19 metres 6 decimetres 50°09'58.4"N 061°53'15.1"W  
(See Chart No. 1, I10)  
This notice affects Electronic Navigational Chart: CA279043, CA379093, CA579098

*DFO(6410447-05)*

Add depth of 11 metres 2 decimetres 50°10'09.5"N 061°52'37.9"W  
(See Chart No. 1, I10)  
This notice affects Electronic Navigational Chart: CA579098

*DFO(6410447-06)*

MONTHLY NOTICES TO MARINERS  
EASTERN EDITION 09/2020  
SECTION 2 – CHART CORRECTIONS

---

Add	depth of 14 metres 0 decimetres (See Chart No. 1, I10) This notice affects Electronic Navigational Chart: CA579098	50°10'16.3"N 061°52'26.5"W  <i>DFO(6410447-07)</i>
Add	depth of 16 metres 4 decimetres (See Chart No. 1, I10) This notice affects Electronic Navigational Chart: CA579098	50°10'37.1"N 061°52'12.5"W  <i>DFO(6410447-08)</i>
Add	depth of 10 metres 8 decimetres (See Chart No. 1, I10) This notice affects Electronic Navigational Chart: CA379093, CA579098	50°10'43.5"N 061°52'10.3"W  <i>DFO(6410447-09)</i>
Add	depth of 8 metres 8 decimetres (See Chart No. 1, I10) This notice affects Electronic Navigational Chart: CA579098	50°10'43.9"N 061°51'49.5"W  <i>DFO(6410447-10)</i>
Add	depth of 14 metres 2 decimetres (See Chart No. 1, I10) This notice affects Electronic Navigational Chart: CA579098	50°10'31.7"N 061°51'57.7"W  <i>DFO(6410447-11)</i>
Delete	depth of 20 metres 1 decimetre (See Chart No. 1, I10) This notice affects Electronic Navigational Chart: CA579098	50°10'28.2"N 061°51'58.6"W  <i>DFO(6410447-12)</i>
Add	depth of 12 metres 8 decimetres (See Chart No. 1, I10) This notice affects Electronic Navigational Chart: CA379093, CA579098	50°10'27.3"N 061°52'00.2"W  <i>DFO(6410447-13)</i>
Add	depth of 15 metres 3 decimetres (See Chart No. 1, I10) This notice affects Electronic Navigational Chart: CA579098	50°10'24.7"N 061°52'04.8"W  <i>DFO(6410447-14)</i>
Add	depth of 13 metres 7 decimetres (See Chart No. 1, I10) This notice affects Electronic Navigational Chart: CA579098	50°10'22.3"N 061°51'58.3"W  <i>DFO(6410447-15)</i>
Add	depth of 15 metres 6 decimetres (See Chart No. 1, I10) This notice affects Electronic Navigational Chart: CA379093, CA579098	50°10'20.6"N 061°51'42.0"W  <i>DFO(6410447-16)</i>
Add	depth of 16 metres 6 decimetres (See Chart No. 1, I10) This notice affects Electronic Navigational Chart: CA279043, CA379093, CA579098	50°09'55.8"N 061°50'41.9"W  <i>DFO(6410447-17)</i>
Add	depth of 12 metres 1 decimetre (See Chart No. 1, I10) This notice affects Electronic Navigational Chart: CA579098	50°10'20.5"N 061°50'31.5"W  <i>DFO(6410447-18)</i>



MONTHLY NOTICES TO MARINERS  
EASTERN EDITION 09/2020  
SECTION 2 – CHART CORRECTIONS

---

Add	20 metres contour label (See Chart No. 1, I30)	50°10'47.0"N 061°51'56.9"W
		<i>DFO(6410447-19)</i>

**4454 - Pointe Curlew à/to Baie Washtawouka - New Edition - 16-NOV-2012 - NAD 1983**  
18-SEP-2020

LNMD. 25-OCT-2019

Add	depth of 9 metres 8 decimetres (See Chart No. 1, I10) This notice affects Electronic Navigational Chart: CA379093, CA579098	50°10'28.2"N 061°52'41.2"W
		<i>DFO(6410447-01)</i>

Add	depth of 15 metres 6 decimetres (See Chart No. 1, I10) This notice affects Electronic Navigational Chart: CA279043, CA379093, CA579098	50°10'32.9"N 061°53'08.9"W
		<i>DFO(6410447-04)</i>

Add	depth of 19 metres 6 decimetres (See Chart No. 1, I10) This notice affects Electronic Navigational Chart: CA279043, CA379093, CA579098	50°09'58.4"N 061°53'15.1"W
		<i>DFO(6410447-05)</i>

Add	depth of 10 metres 8 decimetres (See Chart No. 1, I10) This notice affects Electronic Navigational Chart: CA379093, CA579098	50°10'43.5"N 061°52'10.3"W
		<i>DFO(6410447-09)</i>

Add	depth of 12 metres 8 decimetres (See Chart No. 1, I10) This notice affects Electronic Navigational Chart: CA379093, CA579098	50°10'27.3"N 061°52'00.2"W
		<i>DFO(6410447-13)</i>

Add	depth of 15 metres 6 decimetres (See Chart No. 1, I10) This notice affects Electronic Navigational Chart: CA379093, CA579098	50°10'20.6"N 061°51'42.0"W
		<i>DFO(6410447-16)</i>

Add	depth of 16 metres 6 decimetres (See Chart No. 1, I10) This notice affects Electronic Navigational Chart: CA279043, CA379093, CA579098	50°09'55.8"N 061°50'41.9"W
		<i>DFO(6410447-17)</i>

Add	20 metres contour label (See Chart No. 1, I30)	50°10'19.6"N 061°51'10.1"W
		<i>DFO(6410447-19)</i>

**4507 - St Lunaire Bay - New Edition - 05-DEC-2003 - NAD 1983**  
25-SEP-2020

LNMD. 09-FEB-2018

Add	depth of 4 fathoms, 4 feet (See Chart No. 1, I10) This notice affects Electronic Navigational Chart: CA376094	51°29'04.8"N 055°29'06.2"W
		<i>DFO(6309095-15)</i>

Delete	depth of 14 fathoms (See Chart No. 1, I10)	51°28'48.7"N 055°28'55.3"W
		<i>DFO(6309095-16)</i>

MONTHLY NOTICES TO MARINERS  
EASTERN EDITION 09/2020  
SECTION 2 – CHART CORRECTIONS

---

Add	depth of 5 fathoms (See Chart No. 1, I10) This notice affects Electronic Navigational Chart: CA376094	51°28'49.5"N 055°28'55.3"W  <i>DFO(6309095-17)</i>
Add	depth of 4 fathoms, 1 foot (See Chart No. 1, I10)	51°28'39.4"N 055°28'58.2"W  <i>DFO(6309095-18)</i>
<b>4512 - Quirpon Harbour and Approaches / et les approches - New Edition - 24-JAN-2003 - NAD 1983</b>		
25-SEP-2020		LNMD. 08-FEB-2019
Add	depth of 4 fathoms, 3 feet (See Chart No. 1, I10)	51°34'03.8"N 055°25'24.8"W  <i>DFO(6309095-20)</i>
<b>4514 - St. Anthony Bight - New Edition - 23-MAY-2003 - NAD 1983</b>		
25-SEP-2020		LNMD. 10-OCT-2014
Delete	depth of 11.9 metres (See Chart No. 1, I10) This notice affects Electronic Navigational Chart: CA576419	51°21'25.1"N 055°31'07.0"W  <i>DFO(6309095-13)</i>
Add	depth of 9.3 metres (See Chart No. 1, I10) This notice affects Electronic Navigational Chart: CA576419	51°21'24.8"N 055°31'07.4"W  <i>DFO(6309095-14)</i>
<b>4515 - Hare Bay - New Edition - 20-NOV-1998 - NAD 1983</b>		
25-SEP-2020		LNMD. 30-APR-2010
Add	depth of 3 fathoms, 4 feet (See Chart No. 1, I10)	51°13'28.9"N 055°39'41.0"W  <i>DFO(6309095-01)</i>
Delete	depth of 8 fathoms, 5 feet (See Chart No. 1, I10)	51°13'24.6"N 055°40'07.8"W  <i>DFO(6309095-02)</i>
Add	depth of 6 fathoms (See Chart No. 1, I10)	51°13'26.4"N 055°40'08.8"W  <i>DFO(6309095-03)</i>
Add	depth of 6 fathoms (See Chart No. 1, I10)	51°12'12.5"N 055°41'35.7"W  <i>DFO(6309095-04)</i>
Add	depth of 7 fathoms, 4 feet (See Chart No. 1, I10) This notice affects Electronic Navigational Chart: CA576629	51°12'45.5"N 055°45'07.7"W  <i>DFO(6309095-05)</i>
Delete	depth of 9 fathoms (See Chart No. 1, I10) This notice affects Electronic Navigational Chart: CA576629	51°13'03.7"N 055°45'45.0"W  <i>DFO(6309095-06)</i>

MONTHLY NOTICES TO MARINERS  
EASTERN EDITION 09/2020  
SECTION 2 – CHART CORRECTIONS

---

Add	depth of 7 fathoms, 2 feet (See Chart No. 1, I10) This notice affects Electronic Navigational Chart: CA576629	51°13'02.6"N 055°45'44.0"W  <i>DFO(6309095-07)</i>
Delete	depth of 5 fathoms (See Chart No. 1, I10)	51°20'28.0"N 056°05'20.0"W  <i>DFO(6309095-08)</i>
Add	depth of 2 fathoms, 3 feet (See Chart No. 1, I10)	51°20'24.5"N 056°05'24.2"W  <i>DFO(6309095-09)</i>
Delete	depth of 6 fathoms, 4 feet (See Chart No. 1, I10)	51°20'33.6"N 055°36'26.4"W  <i>DFO(6309095-11)</i>
Add	depth of 4 fathoms, 5 feet (See Chart No. 1, I10)	51°20'33.5"N 055°36'29.6"W  <i>DFO(6309095-12)</i>
Delete	depth of 6 fathoms, 3 feet (See Chart No. 1, I10) This notice affects Electronic Navigational Chart: CA576419	51°21'24.0"N 055°31'05.5"W  <i>DFO(6309095-13)</i>
Add	depth of 5 fathoms, 1 foot (See Chart No. 1, I10) This notice affects Electronic Navigational Chart: CA576419	51°21'24.8"N 055°31'07.4"W  <i>DFO(6309095-14)</i>
<b>4516 - Crémillère Harbour - New Edition - 26-DEC-2003 - NAD 1983</b> 25-SEP-2020		LNMD. 05-FEB-2016
Add	depth of 4 fathoms, 5 feet (See Chart No. 1, I10)	51°20'33.5"N 055°36'29.6"W  <i>DFO(6309095-12)</i>
<b>4519 - Maiden Arm, Big Spring Inlet and / et Little Spring Inlet and approaches / et les approches - New Edition - 09-AUG-2002 - NAD 1983</b> 25-SEP-2020		
Add	depth of 7 fathoms, 4 feet (See Chart No. 1, I10) This notice affects Electronic Navigational Chart: CA576629	51°12'45.5"N 055°45'07.7"W  <i>DFO(6309095-05)</i>
Delete	depth of 9 fathoms (See Chart No. 1, I10) This notice affects Electronic Navigational Chart: CA576629	51°13'03.0"N 055°45'45.0"W  <i>DFO(6309095-06)</i>
Add	depth of 7 fathoms, 2 feet (See Chart No. 1, I10) This notice affects Electronic Navigational Chart: CA576629	51°13'02.6"N 055°45'44.0"W  <i>DFO(6309095-07)</i>

MONTHLY NOTICES TO MARINERS  
EASTERN EDITION 09/2020  
SECTION 2 – CHART CORRECTIONS

---

**4530 - Hamilton Sound: Eastern Portion / Partie-est - New Edition - 15-MAR-2002 - NAD 1983**

25-SEP-2020

LNMD. 17-AUG-2018

Amend FI 6s9m to read FI 4s10m against light 49°26'55.9"N 054°13'41.6"W  
(See Chart No. 1, P16)  
This notice affects Electronic Navigational Chart: CA376655, CA476813  
(N2020073) LL(389) DFO(6309151-01)

**4820 - Cape Freels to / à Exploits Islands - New Chart - 01-JUL-2005 - NAD 1983**

25-SEP-2020

LNMD. 07-AUG-2020

Amend FI 6s10m6M to read FI 4s10m5M against light 49°26'56.1"N 054°13'41.6"W  
(See Chart No. 1, P16)  
This notice affects Electronic Navigational Chart: CA376655, CA476813  
(N2020073) LL(389) DFO(6309151-01)

**4831 - Fortune Bay: Northern Portion / Partie Nord - New Chart - 26-DEC-1986 - NAD 1983**

18-SEP-2020

LNMD. 31-JUL-2020

Delete light F R 47°39'51.0"N 054°43'40.0"W  
(See Chart No. 1, P1)  
This notice affects Electronic Navigational Chart: CA376316  
DFO(6309183-01)

Delete pier between 47°39'50.7"N 054°43'40.2"W  
(See Chart No. 1, F14) and 47°39'52.0"N 054°43'39.8"W  
This notice affects Electronic Navigational Chart: CA376316  
DFO(6309183-02)

**4862 - Carmanville to / à Bacalhoa Island and / et Fogo - New Chart - 26-DEC-2003 - NAD 1983**

25-SEP-2020

LNMD. 24-JUL-2020

Amend FI 6s10m6M to read FI 4s10m5M against light 49°26'55.9"N 054°13'41.5"W  
(See Chart No. 1, P16)  
This notice affects Electronic Navigational Chart: CA376655, CA476813  
(N2020073) LL(389) DFO(6309151-01)

**4863 - Bacalhao Island to / à Black Island - New Edition - 30-NOV-2001 - NAD 1983**

04-SEP-2020

LNMD. 07-AUG-2020

Add green port hand lighted spar buoy FI G, marked DVA5 49°31'56.6"N 054°46'01.4"W  
(See Chart No. 1, Qg)  
This notice affects Electronic Navigational Chart: CA476803  
(N2020051) LL(360.47) DFO(6309155-01)

**4913 - Caraquet Harbour, Baie de Shippegan and / et Miscou Harbour - New Chart - 07-AUG-1992 - NAD 1983**

11-SEP-2020

LNMD. 17-JUL-2020

Add green port hand lighted spar buoy Q G, marked EM3 47°51'29.9"N 064°45'38.0"W  
(See Chart No. 1, Qg)  
This notice affects Electronic Navigational Chart: CA476275  
(G2020128) LL(1306.5) DFO(6309099-01)

Add green port hand lighted spar buoy FI G, marked EM25 47°48'19.5"N 064°54'07.3"W  
(See Chart No. 1, Qg)  
This notice affects Electronic Navigational Chart: CA476275  
(G2020129) LL(1315) DFO(6309100-01)

MONTHLY NOTICES TO MARINERS  
EASTERN EDITION 09/2020  
SECTION 2 – CHART CORRECTIONS

---

Add	yellow, black and yellow West cardinal lighted spar buoy Q(9) 15s, marked ENA (See Chart No. 1, Q130.3) This notice affects Electronic Navigational Chart: CA476275	47°48'27.7"N 064°54'12.0"W  (G2020144) LL(1322.2) DFO(6309101-01)
Amend	QG to read FI G against green port hand lighted spar buoy, marked EN9 (See Chart No. 1, Qg) This notice affects Electronic Navigational Chart: CA476275	47°48'44.8"N 064°54'08.0"W  (G2020131) LL(1321.5) DFO(6309102-01)
Replace	red starboard hand conical buoy, marked EM34 with red starboard hand lighted pillar buoy FI R, marked EM34 (See Chart No. 1, Qf) This notice affects Electronic Navigational Chart: CA476275, CA576263	47°48'07.1"N 064°55'27.5"W  (G2020132) LL(1318.6) DFO(6309103-01)
Amend	QG to read FI G against green port hand lighted spar buoy, marked EM31 (See Chart No. 1, Qg) This notice affects Electronic Navigational Chart: CA476275, CA576263	47°47'53.4"N 064°55'22.9"W  (G2020133) LL(1318.2) DFO(6309107-01)
Amend	FI R to read Q R against red starboard hand lighted spar buoy, marked EM8 (See Chart No. 1, Qf) This notice affects Electronic Navigational Chart: CA476275	47°49'58.5"N 064°48'06.0"W  (G2020134) LL(1308) DFO(6309108-01)
Amend	Q R to read FI R against red starboard hand lighted spar buoy, marked EM10 (See Chart No. 1, Qf) This notice affects Electronic Navigational Chart: CA476275	47°49'36.3"N 064°48'55.3"W  (G2020135) LL(1308.5) DFO(6309109-01)
Amend	FI R to read Q R against red starboard hand lighted spar buoy, marked EM18 (See Chart No. 1, Qf) This notice affects Electronic Navigational Chart: CA476275, CA576266	47°48'28.4"N 064°52'14.1"W  (G2020136) LL(1312) DFO(6309110-01)
Amend	FI G to read Q G against green port hand lighted spar buoy, marked EM23 (See Chart No. 1, Qg) This notice affects Electronic Navigational Chart: CA476275	47°48'24.7"N 064°53'34.6"W  (G2020137) LL(1317) DFO(6309111-01)
Amend	Q R to read FI R against red starboard hand lighted spar buoy, marked EM28 (See Chart No. 1, Qf) This notice affects Electronic Navigational Chart: CA476275	47°48'22.0"N 064°54'16.3"W  (G2020138) LL(1318) DFO(6309112-01)
Replace	green port hand lighted pillar buoy FIG, marked EM7 with green port hand lighted spar buoy Q G, marked EM7 (See Chart No. 1, Qg) This notice affects Electronic Navigational Chart: CA476275	47°50'16.5"N 064°47'37.4"W  (G2020139) LL(1307) DFO(6309113-01)
Delete	red starboard hand lighted pillar buoy FIR, marked EM4 (See Chart No. 1, Qf) This notice affects Electronic Navigational Chart: CA476275	47°51'10.2"N 064°46'16.3"W  (G2020140) LL(1306.2) DFO(6309114-01)

MONTHLY NOTICES TO MARINERS  
EASTERN EDITION 09/2020  
SECTION 2 – CHART CORRECTIONS

---

Add	red starboard hand lighted spar buoy FI R, marked EM4 (See Chart No. 1, Qf) This notice affects Electronic Navigational Chart: CA476275	47°50'57.1"N 064°46'38.3"W  (G2020140) LL(1306.2) DFO(6309114-02)
Add	light FI R against red starboard hand spar buoy, marked EN6 (See Chart No. 1, Qf) This notice affects Electronic Navigational Chart: CA476275	47°48'54.0"N 064°54'20.7"W  (G2020141) LL(1320.6) DFO(6309125-01)
Delete	front range/leading light F with leading line (See Chart No. 1, P20.2) This notice affects Electronic Navigational Chart: CA476275	47°47'47.1"N 064°56'12.9"W  (G2020150) LL(1319.2) DFO(6309147-01)
Delete	rear range/leading light F with leading line (See Chart No. 1, P20.2) This notice affects Electronic Navigational Chart: CA476275	47°47'43.0"N 064°56'28.4"W  (G2020151) LL(1319.3) DFO(6309148-01)
 <b>4920 - Caraquet - New Edition - 14-DEC-2018 - NAD 1983</b>		
	11-SEP-2020	LNMD. 03-APR-2020
Replace	red starboard hand conical buoy, marked EM34 with red starboard hand lighted pillar buoy FI R, marked EM34 (See Chart No. 1, Qf) This notice affects Electronic Navigational Chart: CA476275, CA576263	47°48'07.1"N 064°55'27.9"W  (G2020132) LL(1318.6) DFO(6309103-01)
Amend	QG to read FI G against green port hand lighted spar buoy, marked EM31 (See Chart No. 1, Qg) This notice affects Electronic Navigational Chart: CA476275, CA576263	47°47'53.5"N 064°55'23.3"W  (G2020133) LL(1318.2) DFO(6309107-01)
 <b>4920 - Middle Caraquet - New Edition - 14-DEC-2018 - NAD 1983</b>		
	11-SEP-2020	LNMD. 03-APR-2020
Amend	FI R to read Q R against red starboard hand lighted spar buoy, marked EM18 (See Chart No. 1, Qf) This notice affects Electronic Navigational Chart: CA476275, CA576266	47°48'28.4"N 064°52'14.3"W  (G2020136) LL(1312) DFO(6309110-01)
 <b>4935 - Murray Harbour to à Boughton Bay - New Chart - 18-JAN-2019 - NAD 1983</b>		
	11-SEP-2020	LNMD. 14-AUG-2020
Add	red starboard hand lighted spar buoy FI R, marked NM6/2 (See Chart No. 1, Qf) This notice affects Electronic Navigational Chart: CA476490	46°01'19.3"N 062°28'52.0"W  (G2020149) LL(964.1) DFO(6309142-01)
 <b>5412 - Erik Cove to à Nuvuk Harbour including/y compris Digges Islands - New Edition - 26-NOV-2004 - NAD 1983</b>		
	18-SEP-2020	LNMD. 09-AUG-2013
Add	sounding of 4 fathoms 3 feet, Rep (2020) (See Chart No. 1, I10)	62°27'28.2"N 078°06'28.2"W  DFO(6604681-01)

MONTHLY NOTICES TO MARINERS  
EASTERN EDITION 09/2020  
SECTION 2 – CHART CORRECTIONS

---

**7082 - Cape Baring to/à Cambridge Bay - New Edition - 20-FEB-2004 - Unknown**  
25-SEP-2020

LNMD. 09-SEP-2016

Delete depth of 7 fathoms  
(See Chart No. 1, I10) 69°00'41.2"N 105°51'12.8"W

*DFO(6604686-01)*

Add depth of 4 fathoms 5 feet  
(See Chart No. 1, I10) 69°00'30.7"N 105°50'49.4"W

*DFO(6604686-02)*

**7779 - Dease Strait - New Edition - 13-OCT-2006 - NAD 1983**  
25-SEP-2020

LNMD. 22-OCT-2010

Delete depth of 10.5 metres  
(See Chart No. 1, I10) 69°00'30.8"N 105°50'47.3"W

*DFO(6604686-01)*

Add depth of 8.9 metres  
(See Chart No. 1, I10) 69°00'30.7"N 105°50'49.4"W

*DFO(6604686-02)*

**7782 - Queen Maud Gulf Western Portion/Partie Ouest - New Edition - 28-SEP-2007 - NAD 1983**  
25-SEP-2020

Delete depth of 10.5 metres  
(See Chart No. 1, I10) 69°00'30.8"N 105°50'47.3"W

*DFO(6604686-01)*

Add depth of 8.9 metres  
(See Chart No. 1, I10) 69°00'30.7"N 105°50'49.4"W

*DFO(6604686-02)*

\*909 RADIO AIDS TO MARINE NAVIGATION 2020 (ATLANTIC, ST. LAWRENCE, GREAT LAKES, LAKE WINNIPEG, ARCTIC AND PACIFIC)

**Page 1-1**

**DELETE THE FOLLOWING SECTION:**

**1.1.1 The *Radio Aids to Marine Navigation* Annual Publication**

**REPLACE WITH THE FOLLOWING:**

**1.1.1 The *Radio Aids to Marine Navigation* Annual Publication**

Every ship station fitted on a Canadian ship or on a non-Canadian ship engaged in the coasting trade of Canada, pursuant to the *Ship Station (Radio) Regulations 1999*, and all ships in waters under Canadian jurisdiction, pursuant to the *Charts and Nautical Publications Regulations, 1995*, are required to carry the most recent edition of the *Radio Aids to Marine Navigation* publication.

The Canadian Coast Guard has ceased the printing of its *Radio Aids to Marine Navigation* annual publication. The publication will continue to be available online, free of charge, at: <https://www.ccg-gcc.gc.ca/publications/mcts-sctm/ramn-arnm/index-eng.html>.

Beginning in 2021, the annual edition of the *Radio Aids to Marine Navigation* publication will be published in January, with amendments, if any, advertised in Section 3 of the monthly edition of *Notices to Mariners*. The *Notices to Mariners* publications are available online, free of charge, at: <http://www.notmar.gc.ca>.



SECTION 4 – SAILING DIRECTIONS AND SMALL CRAFT GUIDE CORRECTIONS

---

ARC 403 — Western Arctic, First Edition, 2011 —

Chapter 7 — After paragraph 278

Delete: *Chart 7083*

Replace by: *Chart 7738*

(C2020-002.01)

Chapter 8 — Before paragraph 1

Delete: *Charts 7083, 7573, 7646, 7738, 7736, 7760, 7770*

Replace by: *Charts 7083, 7573, 7736, 7737, 7738, 7739, 7770, 7787,  
7788*

(C2020-002.02)

Chapter 8 — Before paragraph 10

Delete: *Chart 7083*

Replace by: *Charts 7736, 7738*

(C2020-002.03)

Chapter 8 — After paragraph 18

Delete: *Chart 7083*

Replace by: *Chart 7738*

(C2020-002.04)

Chapter 8 — Paragraph 39

Delete: 3.7 m

Replace by: 3.1-m

(C2020-002.05)

Chapter 8 — After paragraph 82

Delete: *Chart 7760*

Replace by: *Chart 7788*

(C2020-002.06)

Chapter 8 — After paragraph 84

Delete: *Chart 7083*

Replace by: *Chart 7736*

(C2020-002.07)

Chapter 8 — After paragraph 85

Delete: *Chart 7760*

Replace by: *Chart 7788*

(C2020-002.08)

Chapter 8 — Paragraph 98

Delete: 20 feet (6.1 m)

Replace by: 6 m

(C2020-002.09)

Chapter 8 — Before paragraph 99

Delete: *Charts 7760, 7083*

Replace by: *Chart 7788*

(C2020-002.10)

SECTION 4 – SAILING DIRECTIONS AND SMALL CRAFT GUIDE CORRECTIONS

---

Chapter 8 — After paragraph 105

Delete: *Chart 7083*

Replace by: *Chart 7788*

(C2020-002.11)

Chapter 8 — Paragraph 107

Delete: 17 to 30 fathoms (31 to 55 m)

Replace by: 31 to 55 m

(C2020-002.12)

Chapter 8 — Paragraph 107

Delete: 39 feet (11.9 m), reported in 1985,

Replace by: 8.9 m

(C2020-002.13)

Chapter 8 — Paragraph 117, after “of Victoria Headland.”

Insert: **Tariunnuaq Bay** is west of Cockburn Bay.

(C2020-002.14)

Chapter 8 — After paragraph 118

Delete: *Chart 7760*

Replace by: *Chart 7788*

(C2020-002.15)

Chapter 8 — After paragraph 122

Insert: *Chart 7787*

(C2020-002.16)

Chapter 8 — After paragraph 138

Insert: *Charts 7646, 7787*

(C2020-002.17)

Chapter 8 — Delete paragraph 140

Replace by: 140 **Caution.** — **Incomplete soundings** show mid-channel depths from the bay approaches to Wilkins Point ranging from 9 to 37 m, but several **shoal depths** of 5.8 to 8.8 m lie up to 6 miles north and NNE of Minna Island. A **shoal depth** of 9.8 m lies 4 miles south of Dryden Point. A low rocky islet is 7 miles north of Acland Point; it has **shoal water** extending NE and SW. A 7.3-m **shoal patch** lies 1.5 miles farther NNE. **Shoal depths** under 10 m extend more than 0.5 mile off the beach NE of Wilkins Point.

(C2020-002.18)

Chapter 8 — Delete paragraph 157

Replace by: 157 **Caution.** — A **shoal** close south of Lund Islet has a depth of 1.8 m. A **shoal sounding** of 7.2 m lies 1 mile south of the islet.

(C2020-002.19)

SECTION 4 – SAILING DIRECTIONS AND SMALL CRAFT GUIDE CORRECTIONS

---

- Chapter 8 — In the vicinity of paragraph 165, photo caption  
Delete: **GJOA HAVEN RANGE IN LINE BEARING 358½°** (1991)  
Replace by: **GJOA HAVEN RANGE IN LINE BEARING 358°** (1991)  
(C2020-002.20)
- Chapter 8 — Paragraph 166  
Delete: 358½°  
Replace by: 358°  
(C2020-002.21)
- Chapter 8 — Paragraph 167, delete first two sentences.  
(C2020-002.22)
- Chapter 8 — Paragraph 170  
Delete: 4 to 5 fathoms (7.3 to 9.1 m)  
Replace by: 7.3 to 9.1 m  
(C2020-002.23)
- Chapter 8 — Paragraph 170  
Delete: 10 fathoms (18 m)  
Replace by: 18 m  
(C2020-002.24)
- Chapter 8 — Paragraph 183  
Delete: 3 fathoms (5.5 m)  
Replace by: 5.5 m  
(C2020-002.25)
- Chapter 8 — Paragraph 183  
Delete: 4 to 6 fathoms (7.3 to 11 m)  
Replace by: 6.2 to 9.8 m  
(C2020-002.26)
- Chapter 8 — Paragraph 184, after “King William Island from”  
Insert: **Saattuq Peninsula** on  
(C2020-002.27)
- Chapter 8 — Paragraph 188  
Delete: , reported in 1987,  
(C2020-002.28)
- Chapter 8 — Delete paragraph 190  
Replace by: 190 **Caution.** — **Reconnaissance soundings** through Rae Strait show an uneven bottom with depths ranging between 9.1 and 77 m except for an extensive mid-channel **shoal area** of 4.8 to 18 m extending about 9 miles SSW of Beads Island. **Shoal depths** of 1.3 and 3.8 m lie 1.5 miles E and 2 miles ENE of Beads Island, respectively. A 4.2-m detached **shoal patch** lies 3 miles SSE of **Brands Point** (68°48'N, 95°15'W), an inconspicuous projection on the west side of the strait. An islet, 0.9 m high, and a 3-m **shoal** lie close east of Brands Point.  
(C2020-002.29)

SECTION 4 – SAILING DIRECTIONS AND SMALL CRAFT GUIDE CORRECTIONS

---

Chapter 8 — Paragraph 191 Delete: 235 feet (75 m) Replace by: 64 m	(C2020-002.30)
Chapter 8 — Paragraph 193 Delete: 3-fathom (5.5-m) Replace by: 5-m	(C2020-002.31)
Chapter 8 — Paragraph 193 Delete: 10-fathom (18.3-m) Replace by: 20-m	(C2020-002.32)
Chapter 8 — Paragraph 194 Delete: 12 fathoms (21.9 m) Replace by: 21.9 m	(C2020-002.33)
Chapter 8 — Paragraph 201 Delete: 10 to 50 fathoms (18.3 to 91 m) Replace by: 13.3 to 91 m	(C2020-002.34)
Chapter 8 — Paragraph 201 Delete: 10 fathoms (18.3 m) Replace by: 18.3 m	(C2020-002.35)
Chapter 8 — After paragraph 211 Delete: <i>Chart 7770</i> Replace by: <i>Charts 7770, 7787</i>	(C2020-002.36)
Chapter 8 — Paragraph 223 Delete: 3 feet (0.9 m) Replace by: 0.9 m	(C2020-002.37)
Chapter 8 — Paragraph 233 Delete: 1 foot (0.3 m), 0.7 mile Replace by: 0.4 m, 0.3 mile	(C2020-002.38)
Chapter 8 — Paragraph 234 Delete: 4 fathoms (7 m) Replace by: 7 m	(C2020-002.39)
Chapter 8 — Paragraph 234 Delete: 2 fathoms (3.7 m) Replace by: 3.7 m	(C2020-002.40)

SECTION 4 – SAILING DIRECTIONS AND SMALL CRAFT GUIDE CORRECTIONS

---

Chapter 8 — Paragraph 235 Delete: 27 feet (8.2 m) Replace by: 8.2 m	(C2020-002.41)
Chapter 8 — After paragraph 247 Delete: <i>Chart 7760</i> Replace by: <i>Chart 7787</i>	(C2020-002.42)
Chapter 8 — Before paragraph 256 Delete: <i>Chart 7083</i> Replace by: <i>Chart 7739</i>	(C2020-002.43)
Chapter 8 — After paragraph 256 Delete: <i>Chart 7573</i>	(C2020-002.44)
Chapter 8 — Before paragraph 260 Delete: <i>Chart 7083</i>	(C2020-002.45)
Chapter 8 — After paragraph 264 Delete: <i>Chart 7760</i>	(C2020-002.46)
Chapter 8 — Paragraph 272, after “Wellington Strait is” Delete: <b>not surveyed</b> Replace by: inadequately surveyed	(C2020-002.47)
Chapter 8 — Paragraph 272, after “ <b>Shoals</b> , indicated by” Delete: <b>air reconnaissance</b> Replace by: a single line of soundings	(C2020-002.48)
Chapter 8 — After paragraph 287 Delete: <i>Chart 7573</i> Replace by: <i>Charts 7573, 7739</i>	(C2020-002.49)
Chapter 8 — After paragraph 289 Insert: <i>Chart 7573</i>	(C2020-002.50)
INDEX — After “Saatuq Island, C8/P48” Insert: Saatuq Peninsula, C8/P184	(C2020-002.51)
INDEX — After “Tarium Niryutait Marine Protected Area, C1/P85” Insert: Tariunnuaq Bay, C8/P117	(C2020-002.52)

SECTION 4 – SAILING DIRECTIONS AND SMALL CRAFT GUIDE CORRECTIONS

---

ATL 107 — Saint John River, Second Edition, 2009 —

Chapter 3 — Paragraph 6, after “there is a wharf”

Delete: “with an outer end ... depth of 1.5 m alongside.”

Replace by: in ruins. Close south of the ruined wharf lie two adjacent  
**ferry ramps.**

(A2020-007.1)

Chapter 3 — Adjacent to paragraph 6, delete the wharf pictograph.

(A2020-007.2)

Chapter 3 — Delete paragraph 7

Replace by: 7 **Facilities.** — A public launching **ramp** is located 100 m SE of the Westfield ferry ramps. Floating **wharves** are located nearby to facilitate the launching and landing of small vessels. A licensed restaurant is located 300 m down the highway toward Saint John. A grocery store and a hardware store are located close by in Grand Bay.

(A2020-007.3)

Chapter 3 — Adjacent to paragraph 7, add a wharf pictograph.

(A2020-007.4)

Chapter 3 — Paragraph 8, after “**Westfield Beach**, south of the”

Delete: wharf

Replace by: aforementioned wharf in ruins

(A2020-007.5)

ATL 108 — Gulf of St. Lawrence (Southwest Portion), First Edition, 2006 —

Chapter 2 — Paragraph 54

Delete: “An **outfall pipe** extends ... immediately upstream of the overhead cables.”

Replace by: An **outfall pipe** extends from the shore just upstream from the overhead cables; a submerged crib, with a depth of 8.4 m, is at the outer end of the outfall pipe. Another submerged crib, with a depth of 5.9 m, is 50 m NNW of the previous crib. A crib in ruins, drying 1 m, is on the west shore immediately upstream from the overhead cables.

(Q2020-038)

Chapter 2 — Paragraph 104

Delete: 3.9 m

Replace by: 3.4 m

(Q2020-039)

Chapter 3 — Paragraph 169, after “Fairway light **buoy DE**”

Delete: (1023)

Replace by: (1018.3)

(A2020-008.16)

SECTION 4 – SAILING DIRECTIONS AND SMALL CRAFT GUIDE CORRECTIONS

---

ATL 112 — St. Lawrence River — Cap-Rouge to Montréal and Rivière Richelieu, Third Edition, 2009 —

Chapter 2 — Paragraph 70

Delete: 4.5 m

Replace by: 5 m

(Q2020-029.1)

Chapter 2 — Paragraph 72

Delete: 7.5 m

Replace by: 8 m

(Q2020-029.2)

Chapter 2 — Paragraph 87

Delete: 450-780-5700; for evenings and weekends, please dial 450-746-7349

Replace by: 450-780-3866

(Q2020-034.1)

Chapter 2 — Paragraph 96

Delete: 2 m

Replace by: 2.2 m

(Q2020-029.3)

Chapter 3 — Delete paragraph 16.

(Q2020-036.1)

Chapter 3 — Delete paragraph 24

Replace by: 24 An **outfall pipe** extends 50 m from the east shore at the southern end of Île Deschaillons. A prohibited anchorage sign is shown near the shore. A second **outfall pipe**, located 0.3 mile further upstream, crosses the river as well as the channel on the west side of Île Deschaillons.

(Q2020-029.4)

Chapter 3 — Paragraph 31, after “telecommunication **tower**”

Insert: with red lights

(Q2020-029.5)

Chapter 3 — Paragraph 31

Delete: 2.5 m

Replace by: 2.0 m

(Q2020-029.6)

Chapter 3 — Paragraph 34

Delete: “A **water intake pipe** ... extends from the east shore.”

Replace by: Several **submerged pipelines** upstream and downstream of the public wharf at Saint-Antoine-sur-Richelieu extend from the east shore, while some cross the river completely.

(Q2020-029.7)

Chapter 3 — Paragraph 35

Delete: 4 m

Replace by: 3.8 m

(Q2020-029.8)

SECTION 4 – SAILING DIRECTIONS AND SMALL CRAFT GUIDE CORRECTIONS

---

Chapter 3 — Paragraph 38

Delete: 3.5 m

Replace by: 4.2 m

(Q2020-029.9)

Chapter 3 — At the end of paragraph 40

Add: More **submerged cables** cross the river 0.6 mile upstream of the wharf.

(Q2020-029.10)

Chapter 3 — Delete paragraph 43.

(Q2020-029.11)

Chapter 3 — At the end of paragraph 50

Add: Two **submerged pipelines** cross the river 0.6 mile upstream of the Highway 20 bridge, and another **submerged pipeline** crosses the river 0.7 mile upstream of those two submerged pipelines.

(Q2020-029.12)

Chapter 3 — At the end of paragraph 52

Add: A **submerged cable** crosses the river at the entrance to the buoyed channel.

(Q2020-029.13)

CEN 305 — Lake Huron, St. Marys River, Lake Superior, First Edition, 2000 —

Chapter 7 — After paragraph 159

Delete: *Chart 2301*

Replace by: *Charts 2301, 2326*

(C2020-005.01)

Chapter 7 — Paragraph 163

Delete: 10 feet (3 m)

Replace by: 1 m

(C2020-005.02)

Chapter 7 — Paragraph 163

Delete: 17 feet (5.2 m)

Replace by: 6 m

(C2020-005.03)

Chapter 7 — Paragraph 165

Delete: **Malony**

Replace by: **Maloney**

(C2020-005.04)

Chapter 7 — Paragraph 165

Delete: 16 feet (4.9 m)

Replace by: 5.1 m

(C2020-005.05)



SECTION 4 – SAILING DIRECTIONS AND SMALL CRAFT GUIDE CORRECTIONS

---

Chapter 7 — Paragraph 168 Delete: 10 feet (3 m) Replace by: 1.1 m	(C2020-005.06)
Chapter 7 — Paragraph 169 Delete: 11 feet (3.4 m) Replace by: 4 m	(C2020-005.07)
Chapter 7 — Paragraph 170 Delete: 3 feet (0.9 m) Replace by: 1.7 m	(C2020-005.08)
Chapter 7 — Paragraph 174 Delete: 16 feet (4.9 m) Replace by: 5.2 m	(C2020-005.09)
Chapter 7 — Paragraph 177 Delete: 14 feet (4.3 m) Replace by: 5 m	(C2020-005.10)
Chapter 7 — Paragraph 177 Delete: 4 feet (1.2 m) Replace by: 1.5 m	(C2020-005.11)
Chapter 7 — Paragraph 180, last line Insert: Wharf is in disrepair (2017).	(C2020-005.12)
Chapter 7 — Paragraph 183, after “two <b>daymark beacons</b> ” Insert: <i>(not shown on Chart 2326)</i>	(C2020-005.13)
Chapter 7 — At the start of paragraph 201 Delete: <b>Hamilton Island</b> Replace by: <b>Hamilton Islands</b>	(C2020-005.14)
Chapter 7 — Paragraph 201, after “0.4 mile south of” Delete: Hamilton Island Replace by: Hamilton Islands	(C2020-005.15)
Chapter 7 — Paragraph 201 Delete: 2 feet (0.6 m) Replace by: 0.1 m	(C2020-005.16)

SECTION 4 – SAILING DIRECTIONS AND SMALL CRAFT GUIDE CORRECTIONS

---

Chapter 7 — Paragraph 201, after “a depth of less than” Delete: 6 feet (1.8 m) Replace by: 1.2 m	(C2020-005.17)
Chapter 7 — Paragraph 201 Delete: 5 feet (1.5 m) Replace by: 0.9 m	(C2020-005.18)
Chapter 7 — Paragraph 201, after “SW, has a depth of” Delete: 6 feet (1.8 m) Replace by: 1.4 m	(C2020-005.19)
Chapter 7 — Before paragraph 203 Delete: <i>Chart 2311</i> Replace by: <i>Chart 2326</i>	(C2020-005.20)
Chapter 7 — Paragraph 207 Delete: 6 feet (1.8 m) Replace by: 2 m	(C2020-005.21)
Chapter 7 — Paragraph 207 Delete: 7 feet (2.1 m) Replace by: 2.4 m	(C2020-005.22)
Chapter 7 — Paragraph 208 Delete: 1 foot (0.3 m) high Replace by: 0.1 m deep	(C2020-005.23)
Chapter 7 — Paragraph 209 Delete: 15 fathoms (27.4 m) Replace by: 27.4 m	(C2020-005.24)
Chapter 7 — Paragraph 210, after “the SW island” Delete: is submerged less than 6 feet (1.8 m) Replace by: has a depth of 0.7 m	(C2020-005.25)
Chapter 7 — Paragraph 210 Delete: “A <b>rock</b> with ... position is doubtful.”	(C2020-005.26)
Chapter 7 — Paragraph 210 Delete: 12 feet (3.7 m) Replace by: 3.5 m	(C2020-005.27)

SECTION 4 – SAILING DIRECTIONS AND SMALL CRAFT GUIDE CORRECTIONS

---

Chapter 7 — Paragraph 211 Delete: 5 to 7 fathoms (9.1 to 12.8 m) Replace by: 9.1 to 12.8 m	(C2020-005.28)
Chapter 7 — Paragraph 211 Delete: 3 to 5 fathoms (5.5 to 9.1 m) Replace by: 5.5 to 9.1 m	(C2020-005.29)
Chapter 7 — Paragraph 213 Delete: 6 feet (1.8 m) Replace by: 1.6 m	(C2020-005.30)
Chapter 7 — Paragraph 215 Delete: less than 6 feet (1.8 m) Replace by: 0.6 m	(C2020-005.31)
Chapter 7 — Paragraph 215, after “Another <b>shoal rock</b> ” Insert: , 1 m deep,	(C2020-005.32)
Chapter 7 — Paragraph 217 Delete: less than 6 feet (1.8 m) Replace by: 0.8 m	(C2020-005.33)
Chapter 7 — Paragraph 225 Delete: has a depth of 2 feet (0.6 m) Replace by: is <b>awash</b>	(C2020-005.34)
Chapter 7 — Paragraph 231 Delete: 6 feet (1.8 m) Replace by: 1.7 m	(C2020-005.35)
Chapter 7 — Paragraph 237 Delete: submerged 2 feet (0.6 m) Replace by: <b>awash</b>	(C2020-005.36)
Chapter 7 — Paragraph 238 Delete: 3 feet (0.9 m) Replace by: 0.3 m	(C2020-005.37)

SECTION 4 – SAILING DIRECTIONS AND SMALL CRAFT GUIDE CORRECTIONS

---

- Chapter 7 — Paragraph 242  
Delete: , submerged less than 6 feet (1.8 m),  
Replace by: has a depth of 1.2 m and (C2020-005.38)
- Chapter 7 — Paragraph 247, after “A **rock**,”  
Insert: (*not shown on Chart 2326*) (C2020-005.39)
- Chapter 7 — Paragraph 248  
Delete: 6 fathoms (11 m)  
Replace by: 11 m (C2020-005.40)
- Chapter 7 — Paragraph 248  
Delete: 5 to 6 fathoms (9.1 to 11 m)  
Replace by: 9.1 to 11 m (C2020-005.41)
- Chapter 7 — Paragraph 251  
Delete: 6 feet (1.8 m)  
Replace by: 1.3 m (C2020-005.42)
- Chapter 7 — Paragraph 253, after “south side by”  
Delete: **Dog Island**  
Replace by: **Singleton Island** (C2020-005.43)
- Chapter 7 — Paragraph 253, after “**Wyllie Point** and”  
Delete: Dog Island  
Replace by: Singleton Island (C2020-005.44)
- Chapter 7 — Paragraph 253, after “the passage between”  
Delete: Dog Island  
Replace by: Singleton Island (C2020-005.45)
- Chapter 7 — Paragraph 253, after “east end of”  
Delete: Dog Island  
Replace by: Singleton Island (C2020-005.46)
- Chapter 7 — Paragraph 253  
Delete: **Wyllie Point**  
Replace by: **Wiley Point** (C2020-005.47)
- Chapter 7 — After paragraph 254  
Delete: *Charts 2311, 2301*  
Replace by: *Charts 2301, 2326* (C2020-005.48)

SECTION 4 – SAILING DIRECTIONS AND SMALL CRAFT GUIDE CORRECTIONS

---

Chapter 7 — Delete paragraph 255.	(C2020-005.49)
Chapter 7 — Delete paragraph 256.	(C2020-005.50)
Chapter 7 — Paragraph 257, after “mile NE of” Delete: McNab Point Replace by: <b>McNab Point</b>	(C2020-005.51)
Chapter 7 — Paragraph 257 Delete: is submerged less than 6 feet (1.8 m) Replace by: has a depth of 0.9 m	(C2020-005.52)
Chapter 7 — Paragraph 260 Delete: 19 feet (5.8 m) Replace by: 5.4 m	(C2020-005.53)
Chapter 7 — After paragraph 267 Delete: <i>Chart 2314</i> Replace by: <i>Charts 2314, 2326</i>	(C2020-005.54)
Chapter 7 — Before paragraph 371 Delete: <i>Chart 2301</i> Replace by: <i>Charts 2301, 2326</i>	(C2020-005.55)
Chapter 7 — Paragraph 372 Delete: 5 fathoms (9.1 m) Replace by: 7.7 m	(C2020-005.56)
Chapter 7 — Paragraph 375 Delete: <b>Buck Island</b> Replace by: <b>Buck Islands</b>	(C2020-005.57)
Chapter 7 — Paragraph 375 Delete: <b>rock awash</b> Replace by: <b>rock</b> dry 0.4 m	(C2020-005.58)
Chapter 7 — Paragraph 375 Delete: 1 foot (0.3 m) Replace by: 0.7 m	(C2020-005.59)

SECTION 4 – SAILING DIRECTIONS AND SMALL CRAFT GUIDE CORRECTIONS

---

Chapter 7 — Paragraph 378, after “by a bridge”

Insert: *(not shown on Chart 2326)*

(C2020-005.60)

Chapter 7 — Paragraph 378

Delete: 17 feet (5.2 m)

Replace by: 4.2 m

(C2020-005.61)

Chapter 7 — Paragraph 378

Delete: 12 feet (3.7 m)

Replace by: 3.6 m

(C2020-005.62)

Chapter 7 — Paragraph 380

Delete: 3 feet (0.9 m)

Replace by: 0.5 m

(C2020-005.63)

Chapter 7 — Paragraph 381

Delete: 6 fathoms (11 m)

Replace by: 8.1 m

(C2020-005.64)

Chapter 7 — Paragraph 382

Delete: **Sour Island**

Replace by: **Honeymoon Island**

(C2020-005.65)

Chapter 7 — Paragraph 382

Delete: 7 feet (2.1 m)

Replace by: 2.2 m

(C2020-005.66)

Chapter 7 — Paragraph 383

Delete: 6 to 8 fathoms (11 to 14.6 m)

Replace by: 12.6 m

(C2020-005.67)

Chapter 7 — Paragraph 385, after “**Clavet Point** in”

Delete: 6 fathoms (11 m)

Replace by: 11 m

(C2020-005.68)

Chapter 7 — Paragraph 385, after “**Hoorigan Point** in”

Delete: 6 fathoms (11 m)

Replace by: 11 m

(C2020-005.69)

Chapter 7 — Paragraph 387

Delete: 2 to 6 fathoms (3.7 to 11 m)

Replace by: 5.2 m

(C2020-005.70)

SECTION 4 – SAILING DIRECTIONS AND SMALL CRAFT GUIDE CORRECTIONS

---

- INDEX — After “Malone Island, C7/P145”  
Delete: Malony Shoal, C7/P165  
Replace by: Maloney Shoal, C7/P165  
(C2020-005.71)
- INDEX — After “Ham Point, C7/P112”  
Delete: Hamilton Island, C7/P201  
Replace by: Hamilton Islands, C7/P201  
(C2020-005.72)
- INDEX — After “Dog Harbour, C5/P13”  
Delete: Dog Island, C7/P253  
(C2020-005.73)
- INDEX — After “Sinclair Island, C4/P110”  
Insert: Singleton Island, C7/P253  
(C2020-005.74)
- INDEX — After “Squaw Bay (Black Bay), C7/P99”  
Delete: Squaw Bay (Thunder Bay), C7/P255  
(C2020-005.75)
- INDEX — After “Squaw Island (St. Marys River), C3/P44”  
Delete: Squaw Island (Thunder Bay), C7/P255  
(C2020-005.76)
- INDEX — After “Brush Point, MI, C3/P167”  
Delete: Buck Island, C7/P375  
Replace by: Buck Islands, C7/P375  
(C2020-005.77)
- INDEX — After “Smokehouse Island, C1/P228”  
Delete: Sour Island, C7/P382  
(C2020-005.78)
- INDEX — After “Holdridge Shoal, MI, C2/P156”  
Insert: Honeymoon Island, C7/P382  
(C2020-005.79)
- INDEX — After “Wright Point, C1/P127”  
Delete: Wyllie Point, C7/P253  
(C2020-005.80)
- INDEX — After “Wilde Island, C4/P136”  
Insert: Wiley Point, C7/P253  
(C2020-005.81)
- INDEX — After “McNab Point (Lake Huron), C1/P189”  
Delete: McNab Point (Lake Superior), C7/P255  
Replace by: McNab Point (Lake Superior), C7/P257  
(C2020-005.82)

MONTHLY NOTICES TO MARINERS  
EASTERN EDITION 09/2020

SECTION 5 – LIST OF LIGHTS, BUOYS AND FOG SIGNALS CORRECTIONS

The amendments are highlighted and deletions are crossed out. For general and region-specific information on the List of Lights, click on the following links: [Newfoundland and Labrador Coast](#), [Atlantic Coast](#), [Inland Waters](#) and [Pacific Coast](#).

No.	Name	Position ----- Latitude N. Longitude W.	Light Characteristics	Focal Height in m. above water	Nomi- nal Range	Description ----- Height in meters above ground	Remarks ----- Fog Signals
-----	------	--	--------------------------	--	-----------------------	--	---------------------------------

**NEWFOUNDLAND AND LABRADOR COAST**

**CAPE RACE TO ST. SHOTT'S (LL 1 – 7.4)**

2 <b>H0443.4</b>	Portugal Cove South light and fog signal	<del>On S. side of cove.</del> 46 42 16.3 053 15 37.3	Fl R 2s	9.1	4	Square skeleton tower. 4.3	Flash 0.5 s; eclipse 1.5 s. Seasonal.  Horn - Blast 5 s; sil. 55 s.  Chart:4844 Edn 09/20 (N20-047)
---------------------	--	---	---------	-----	---	-------------------------------	---

**PLACENTIA BAY (LL 14.4 – 79)**

19.5	Red Island Shoal ODAS light buoy	47 19 03.0 054 07 30.0	Fl(5) Y 20s	.....	.....	ODAS, yellow.	Operates 24 h. Seasonal.  Chart:4841 Edn 09/20 (N20-048)
------	-------------------------------------	---------------------------	-------------	-------	-------	---------------	--

**WEST COAST (LL 173 – 208.2)**

199.4 <b>H0176</b>	Trout River Wharf Light	49 28 51.1 058 07 57.2	Fl G 4s	2.6	2	Mast. 2.2	Flash 1 s; eclipse 3 s. Seasonal.  Chart:4881 Edn 09/20 (N20-078)
200.3 <b>H0165</b>	Rocky Harbour Wharf Light	49 35 27.4 057 55 08.1	Fl G 4s	.....	2	Mast. 2.6	Flash 1 s; eclipse 3 s. Seasonal.  Chart:4881 Edn 09/20 (N20-080)

**STRAIT OF BELLE ISLE (LL 211 – 234)**

211.83 <b>H0153.7</b>	Back Arm West Wharf Light	Port au Choix Harbour. 50 42 27.4 057 21 23.2	Fl R 4s	3.5	2	Cylindrical Mast. 2.6	Flash 1 s; eclipse 3 s. Seasonal.  Chart:4679 Edn 09/20 (N20-083)
216 <b>H0145</b>	Harbour Point Light	N. of St Barbe wharf. 51 12 22.8 056 46 33.2	Fl R 4s	6.1	4	Skeleton tower, orange daymark. 5.2	Flash 1 s; eclipse 3 s. Year round.  Chart:4667 Edn 09/20 (N20-084)

**WHITE BAY (LL 235 – 269.3)**

237.4	Butterpot Rock light buoy KQB	Quirpon Harbour entrance. 51 34 52.9 055 26 29.2	Fl(2) W 10s	.....	.....	Black-red-black spar, marked "KQB".	Seasonal.  Chart:4512 Edn 09/20 (N20-065)
247 <b>H0722</b>	Conche Light	Conche Harbour entrance. 50 53 09.8 055 53 49.7	Fl R 6s	7.2	4	Square skeleton tower, red and white rectangular daymark. 6.7	Flash 1 s; eclipse 5 s. Seasonal.  Chart:4583 Edn 09/20 (N20-040)



MONTHLY NOTICES TO MARINERS  
EASTERN EDITION 09/2020

SECTION 5 – LIST OF LIGHTS, BUOYS AND FOG SIGNALS CORRECTIONS

No.	Name	Position ----- Latitude N. Longitude W.	Light Characteristics	Focal Height in m. above water	Nomi- nal Range	Description ----- Height in meters above ground	Remarks ----- Fog Signals	
<b>NOTRE DAME BAY (LL 326 – 346.4, 354 – 395)</b>								
333	Lushes Bight light buoy DL1	Lush's Bight Notre Dame Bay. 49 35 24.2 055 43 36.8	Fl G 4s	.....	.....	Green, marked "DL1".	Seasonal.  Chart:4592 Edn 09/20 (N20-090)	
360 H0648	Duck Island Light	SW. of Main Tickle, Friday Bay. 49 35 33.0 054 43 32.7	Fl W 4s	17.4	6	Square skeleton tower, white rectangular daymark with red band at top and bottom.  4.3	Flash 1 s; eclipse 3 s. Seasonal.  Chart:4863 Edn 09/20 (N20-070)	
360.47	Virgin Arm Inner Shoal light buoy DVA5	49 31 56.6 054 46 01.4	Fl G 4s	.....	.....	Green spar, marked "DVA5".	Seasonal.  Chart:4863 Edn 09/20 (N20-051)	
377 H0632	Smoker Island Light	W. of Change Island. 49 36 41.8 054 27 09.6	Fl W 4s	10.7	5	Square skeleton tower, red and white rectangular daymark.  5.3	Flash 1 s; eclipse 3 s. Year round.  Chart:4862 Edn 09/20 (N20-088)	
389 H0597	Green Island Light	Rocky Bay. 49 26 55.9 054 13 41.6	Fl W 4s	9.8	5	Rectangular skeleton tower, red and white rectangular daymark with white horizontal band.	Flash 1 s; eclipse 3 s. Visible 180°. Year round.  Chart:4530 Edn 09/20 (N20-073)	
<b>ATLANTIC COAST</b>								
<b>GULF OF ST. LAWRENCE (LL 883.2 – 940.3, 1169.1 – 1426, 1477.5 – 1584)</b>								
884 H1230	Havre Boucher range	On SW. shore of harbour. 45 40 54.4 061 31 37.7	F G	.....	8.3	8	Square skeleton tower, white daymark with red vertical stripe.  7.5	Visible in line of range. Seasonal.
885 H1230.1		194°31' 433.2 m from front.	F G	.....	32.4	8	White pyramidal tower with red vertical stripe and red upper portion.  9.6	Visible in line of range. Seasonal.  Chart:4302 Edn 09/20 (G20-147, 148)
898 H1240	Pictou Island Breakwater	On SE. corner of W. breakwater. 45 48 09.5 062 35 08.4	Fl G 4s	4.9	4	Pipe swing pole, green- white-black square daymark.  4.0	Flash 1 s; eclipse 3 s. Seasonal.  Chart:4483 Edn 09/20 (G20-153)	
1246.8 H1526.4	Pokemouche Gully Wharf	On SW. corner. 47 40 20.3 064 48 42.9	Fl W 4s	5.7	4	Pipe swing pole, red and white triangular daymark.  4.7	Operates at night only. Seasonal.  Chart:N/A Edn 09/20 (G20-156)	
1306.5	Caraquet Channel light buoy EM3	47 51 29.9 064 45 38.0	Q G 1s	.....	.....	Green spar, marked "EM3".	Seasonal (in place year round).  Chart:4913 Edn 09/20 (G20-128)	

MONTHLY NOTICES TO MARINERS  
EASTERN EDITION 09/2020

SECTION 5 – LIST OF LIGHTS, BUOYS AND FOG SIGNALS CORRECTIONS

No.	Name	Position ----- Latitude N. Longitude W.	Light Characteristics	Focal Height in m. above water	Nomi- nal Range	Description ----- Height in meters above ground	Remarks ----- Fog Signals
1307	Caraquet Channel light buoy EM7	47 50 16.5 064 47 37.4	Q G 1s	.....	.....	Green spar, marked "EM7".	(Winter spar.) Buoy may be repositioned due to shifting channel. Seasonal (in place year round).  Chart:4913 Edn 09/20 (G20-139)
1308	Caraquet Channel light buoy EM8	NW. side of channel. 47 49 57.8 064 48 07.0	Q R 1s	.....	.....	Red spar, marked "EM8".	(Winter spar.) Buoy may be repositioned due to shifting channel. Seasonal (in place year round).  Chart:4913 Edn 09/20 (G20-134)
1308.5	Caraquet Channel light buoy EM10	47 49 36.3 064 48 55.7	Fl R 4s	.....	.....	Red spar, marked "EM10".	(Winter spar.) Buoy may be repositioned due to shifting channel. Seasonal (in place year round).  Chart:4913 Edn 09/20 (G20-135)
1312	Caraquet Harbour light buoy EM18	47 48 28.4 064 52 14.3	Q R 1s	.....	.....	Red spar, marked "EM18".	(Winter spar.) Buoy may be repositioned due to shifting channel. Seasonal (in place year round).  Chart:4920 Edn 09/20 (G20-136)
1315	Caraquet Harbour light buoy EM25	47 48 19.5 064 54 07.3	Fl G 4s	.....	.....	Green spar, marked "EM25".	Seasonal (in place year round).  Chart:4913 Edn 09/20 (G20-129)
1317	Caraquet Harbour West light buoy EM23	S. of Ile de Caraquet Island. 47 48 24.7 064 53 34.6	Q G 1s	.....	.....	Green spar, marked "EM23".	(Winter spar.) Buoy may be repositioned due to shifting channel. Seasonal (in place year round).  Chart:4913 Edn 09/20 (G20-137)
1318	Caraquet Harbour light buoy EM28	SW. of Ile de Caraquet Island. 47 48 22.0 064 54 16.7	Fl R 4s	.....	.....	Red spar, marked "EM28".	(Winter spar.) Buoy may be repositioned due to shifting channel. Seasonal (in place year round).  Chart:4913 Edn 09/20 (G20-138)
1318.2	Caraquet Harbour light buoy EM31	47 47 53.5 064 55 23.3	Fl G 4s	.....	.....	Green boat type, marked "EM31".	Buoy may be repositioned due to shifting channel. Seasonal.  Chart:4920 Edn 09/20 (G20-133)
1318.6	Caraquet Harbour light buoy EM34	47 48 07.1 064 55 27.9	Fl R 4s	.....	.....	Red, marked "EM34".	(Winter spar.) Seasonal.  Chart:4920 Edn 09/20 (G20-132)

MONTHLY NOTICES TO MARINERS  
EASTERN EDITION 09/2020

SECTION 5 – LIST OF LIGHTS, BUOYS AND FOG SIGNALS CORRECTIONS

No.	Name	Position ----- Latitude N. Longitude W.	Light Characteristics	Focal Height in m. above water	Nomi- nal Range	Description ----- Height in meters above ground	Remarks ----- Fog Signals
1319.2 H1585	Pointe à Brideau range						Delete from list.
1319.3							Delete from list.  Chart:4913 Edn 09/20 (G20-150, 151)
1320.6	Caraquet Island light buoy EN6	Caraquet Harbour. 47 48 53.8 064 54 21.5	Fl R 4s	.....	.....	Red spar, marked "EN6".	Seasonal.  Chart:4913 Edn 09/20 (G20-141)
1321.5	Caraquet Island light buoy EN9	47 48 45.1 064 54 07.8	Fl G 4s	.....	.....	Green spar, marked "EN9".	(Winter spar.) Buoy may be repositioned due to shifting channel. Seasonal (in place year round).  Chart:4913 Edn 09/20 (G20-131)
1322.2	Caraquet Island West cardinal light buoy ENA	47 48 27.8 064 54 12.0	Q(9) W 15s	.....	.....	Yellow-black-yellow spar, marked "ENA".	Seasonal.  Chart:4913 Edn 09/20 (G20-130, 144)
1539.15	Île Dufour fairway light and whistle buoy STAUG	Saint-Augustin. 51 10 32.5 058 18 06.0	Mo(A) W 6s	.....	.....	Red and white vertical stripes, marked "STAUG".	Seasonal.  Chart:4472 Edn 09/20 (Q20-119)
<b>PRINCE EDWARD ISLAND (LL 942 – 1084.7)</b>							
964.1	Sable Point light buoy NM6/2	46 01 19.3 062 28 52.1	Fl R 4s	.....	.....	Red spar, marked "NM6/2".	Seasonal.  Chart:4935 Edn 09/20 (G20-149)
1025 H1057	Fishing Cove	On outer end of breakwater. 46 24 26.2 064 08 04.9	LF R 6s	7.5	4	Pipe swing pole, red and white triangular daymark. 6.9	Flash 2 s; eclipse 4 s. Seasonal.  Chart:4406 Edn 09/20 (G20-098)
1031 H1068	Seal Point (Howards Cove) Wharf	On wharf. 46 44 22.9 064 22 46.3	Iso R 2s	8.3	4	Square skeleton tower, red and white rectangular daymark with red triangle in centre. 6.4	Operates at night only. Year round.  Chart:4906 Edn 09/20 (G20-126)
<b>NORTHUMBERLAND STRAIT (LL 1085 – 1165.9)</b>							
1154	Goulet de Terre- Noire light buoy XX4	46 46 06.8 064 50 50.9	Fl R 4s	.....	.....	Red, marked "XX4".	Buoy may be repositioned due to shifting channel. Seasonal.  Chart:N/A Edn 09/20 (G20-155)
1154.4	Goulet de Terre- Noire light buoy XX24	46 46 01.0 064 51 33.5	Q R 1s	.....	.....	Red, marked "XX24".	Buoy may be repositioned due to shifting channel. Seasonal.  Chart:N/A Edn 09/20 (G20-162)

MONTHLY NOTICES TO MARINERS  
EASTERN EDITION 09/2020

SECTION 5 – LIST OF LIGHTS, BUOYS AND FOG SIGNALS CORRECTIONS

No.	Name	Position ----- Latitude N. Longitude W.	Light Characteristics	Focal Height in m. above water	Nomi- nal Range	Description ----- Height in meters above ground	Remarks ----- Fog Signals
1154.45	Goulet de Terre- Noire light buoy <b>XX31</b>	46 46 15.2 064 52 10.0	Fl G 4s	.....	.....	Green, marked " <b>XX31</b> ".	Buoy may be repositioned due to shifting channel. Seasonal.  Chart:N/A <b>Edn 09/20 (G20-163)</b>

**INLAND WATERS**

**ST. LAWRENCE RIVER SEAWAY (LL 0.05 - 401, 1193 – 1204.5)**

31	<b>Pointe Fortier</b> light buoy BEAA	<b>Pointe Fortier</b> 45 20 22.9 073 54 19.4	Fl Y 4s	.....	.....	Yellow <b>spar</b> , marked "BEAA".	<del>(Winter spar.)</del> Seasonal (in place year round).  Chart:1430 <b>Edn 09/20 (Q20-065)</b>
32	<b>Pointe Fortier</b> light buoy BEAB	<b>Pointe Fortier</b> 45 19 58.9 073 54 55.3	Fl Y 4s	.....	.....	Yellow <b>spar</b> , marked "BEAB".	<del>(Winter spar.)</del> Seasonal (in place year round).  Chart:1430 <b>Edn 09/20 (Q20-066)</b>

**NORTH CHANNEL – LAKE HURON (LL 983 – 1041)**

1009.5	Whitefish River	At river entrance on small island. 46 06 28.1 081 44 01.0	Fl W 4s	<b>6.1</b>	<b>5</b>	Cylindrical mast, red and white rectangular daymark with green square in centre. <b>3.9</b>	Seasonal (in place year round).  Chart:2207 <b>Edn 09/20 (D20-014)</b>
1033	Mississagi Island	On S. end of island. 46 06 27.3 083 00 26.8	Fl W 4s	20.9	<b>4</b>	<del>White</del> Skeleton tower, <del>red</del> and white rectangular daymark. <b>18.0</b>	Obscured from 139° through S. to 209°. Seasonal (in place year round).  Chart:2259 <b>Edn 09/20 (D20-015)</b>

**ST. MARYS RIVER (LL 1059.6 – 1081)**

1062	Rains Wharf range	46 15 15.2 084 05 43	F W	.....	10	.....	Cylindrical mast, white daymark, orange vertical stripe. <b>9.6</b>	Year round.
1063		134°56' 267.9 m from front.	F W	.....	<b>18.4</b>	<b>15</b>	<b>Skeleton</b> tower, white daymark with orange vertical stripe. <b>15.6</b>	<b>Operates 24 h.</b> Year round.  Chart:14883(U.S.) <b>Edn 09/20 (D20-016)</b>

**OTTAWA RIVER (LL 1233.3 – 1322)**

1310	Short Turn Island							Delete from list.  Chart:1553 <b>Edn 09/20 (B20-039)</b>
------	-------------------	--	--	--	--	--	--	---

**CANADIAN COAST GUARD – MARINE INFORMATION REPORT AND SUGGESTION SHEET**

Name of Ship or Sender: ..... Date: .....

Address of Sender: .....  
Street # Street Name

Town / City: ..... Prov / State: ..... Postal Code / Zip Code: .....

Tel / Fax / E-mail address of sender: .....

Observation Date: ..... Time (UTC): .....

Geographical Position: .....

Coordinate Position: Lat: ..... Long: .....

Position Method:  DGPS  GPS with WAAS  GPS  Radar  Other

Horizontal Datum Used:  WGS 84  NAD 27  Other

Estimated Position Accuracy: .....

Chart #: ..... Datum:  NAD 27  NAD 83

Chart Edition: ..... Last Correction applied: .....

Publications affected (Quote edition and page number): .....

\*Full details (Attach additional sheets as necessary): .....

Mariners are requested to notify the responsible authorities when new or suspected dangers to navigation are discovered, changes are observed in aids to navigation, or corrections to publications are seen to be necessary.

*In the case of new or suspected dangers to navigation, it is important that all details be given in order to aid with future investigations. Items of interest include heights, depths, physical description, type of bottom and equipment method used to position the item. It is helpful to mark details on the chart, which will be promptly replaced by the Canadian Hydrographic Service.*

Reports should be made to the nearest Marine Communications and Traffic Services Centre (MCTS) and should be confirmed in writing to:

Leader, Notices to Mariners  
Canadian Coast Guard  
Department of Fisheries and Oceans  
Montreal, QC H2Y 2E7  
[Notmar.XNCR@dfo-mpo.gc.ca](mailto:Notmar.XNCR@dfo-mpo.gc.ca)

In the case of information concerning aids to navigation or the  
List of Lights, Buoys and Fog Signals book.

**OR**

Director General, Canadian Hydrographic Service &  
Oceanographic Services  
Department of Fisheries and Oceans  
Ottawa, ON K1A 0E6  
[CHSINFO@dfo-mpo.gc.ca](mailto:CHSINFO@dfo-mpo.gc.ca)

In the case of new or suspected dangers to navigation or  
where corrections to "Sailing Directions" appear to be  
necessary.

For general questions on Canadian Coast Guard programs or services, please send an e-mail to:  
[info@dfo-mpo.gc.ca](mailto:info@dfo-mpo.gc.ca)