



Fisheries and Oceans  
Canada

Pêches et Océans  
Canada

Canadian  
Coast Guard

Garde côtière  
canadienne

# NOTICES TO MARINERS PUBLICATION EASTERN EDITION

MONTHLY EDITION N°10  
October 30, 2020



Safety First, Service Always

Published Monthly by the  
**CANADIAN COAST GUARD**  
[www.notmar.gc.ca/subscribe](http://www.notmar.gc.ca/subscribe)

## CONTENTS

	Page
Section 1	General and Safety Information..... 1 - 14
Section 2	Chart Corrections..... 15 - 29
Section 3	Radio Aids to Marine Navigation Corrections ..... N/A
Section 4	Sailing Directions and Small Craft Guide Corrections..... 31
Section 5	List of Lights, Buoys and Fog Signals Corrections..... 32 - 39

Notices to Mariners Publication  
Eastern Edition  
Monthly Edition N°10/2020

**Published under the authority of:**  
Canadian Coast Guard Programs  
Aids to Navigation and Waterways  
Fisheries and Oceans Canada  
Montreal, Quebec  
H2Y 2E7

© Her Majesty the Queen in Right of Canada, 2020  
Fs152-5E-PDF  
ISSN 1719-7678

Available on the Notices to Mariners website:  
[www.notmar.gc.ca](http://www.notmar.gc.ca)

Disponible en français :  
Publication des Avis aux navigateurs  
Édition de l'Est  
Édition mensuelle N°10/2020

## EXPLANATORY NOTES

**Geographical positions** refer directly to the graduations of the largest scale Canadian Hydrographic Service chart unless otherwise indicated.

**Bearings** refer to the true compass and are measured clockwise from 000° (North) clockwise to 359°; those relating to lights are from seaward.

**Visibility** of lights is that in clear weather.

**Depths** - The units used for soundings (metres, fathoms or feet) are stated in the title of each chart.

**Elevations** are normally given above Higher High Water, Large Tide unless otherwise indicated.

**Distances** may be calculated as follows:

1 nautical mile = 1,852 metres (6,076.1 feet)

1 statute mile = 1,609.3 metres (5,280 feet)

1 metre = 3.28 feet

**Temporary and Preliminary Notices to Mariners** are indicated by a (T) or a (P) in Section 1, respectively. Please note that nautical charts are not amended by the Canadian Hydrographic Service for temporary (T) and preliminary (P) notices. It is recommended that mariners chart these corrections in pencil. For the list of charts affected by (T) & (P) notices, please refer to the index on page ii of the current [Monthly Summary of \(T\) and \(P\) Notices](#) publication.

**Please note that, in addition to the temporary and preliminary changes normally advertised as (T) & (P) notices, there are a few permanent changes to aids to navigation that have been advertised as preliminary Notices to Mariners while charts are being updated for new editions.**

### Marine Information Report & Suggestion Sheet

Mariners are requested to notify the responsible authorities when new or suspected dangers to navigation are discovered, changes observed in aids to navigation or corrections to publications are seen to be necessary. Such communications can be made using the *Marine Information Report & Suggestion Sheet* inserted on the last page of each monthly edition of *Notices to Mariners*.

### Canadian Hydrographic Service (CHS) – Information Published in Section 2 of *Notices to Mariners*

Mariners are advised that only the most critical changes that directly affect safety to navigation are issued in Section 2 – Chart Corrections. This limitation is required to ensure that charts remain as clear and easy to read as possible. As a result, mariners may see minor discrepancies of a non-critical nature between information in official publications. For example, a small change in the nominal range or focal height of a light may not result in the production of a chart correction in *Notices to Mariners*, but may result in a correction in the *List of Lights, Buoys and Fog Signals* publication.

**In the case of a discrepancy between information provided on CHS charts relating to aids to navigation, and the *List of Lights, Buoys and Fog Signals* publication, the latter shall be deemed as containing the most up-to-date information.**

### Canadian Nautical Charts & Publications

A source list of Canadian nautical charts and publications is published in Notice No. 14 of the *Notices to Mariners Annual Edition 2020*. The source supply and the prices effective at the time of printing are listed. For current chart edition dates, please refer to the following website: [www.chs-shc.gc.ca/charts-cartes/paper-papier/index-eng.asp](http://www.chs-shc.gc.ca/charts-cartes/paper-papier/index-eng.asp)

## CHART CORRECTIONS – SECTION 2

Corrections to nautical charts will be listed in numerical order by chart number. Each chart correction listed applies only to that particular chart. Related charts, if any, will have their own specific correction listed separately.

Users should also refer to CHS *Chart 1: Symbols, Abbreviations and Terms* for additional information pertaining to the correction of charts.

The illustration below describes the elements that will comprise a typical Section 2 chart correction:

	Chart Number	Chart Title	Charts latest new edition date	Horizontal Chart Datum	Last Correction
Weekly chart correction date	1202	Cap Eternité à/to Saint-Fulgence – New Edition – 20-MAY-94 – NAD 1927			
	6-Aug-1999				LNM/D 23-Jul-1999
	Add	light Fl G		48°26'36.4"N 70°53'08.6"W	
		(See Chart No 1 P24)	(F2007-107) LL (700)	DFO(6829264-01)	
	Chart action	Chart No 1 reference no.	CCG reference no.	List of light no.	CHS reference no.

The last correction number is identified with the **LNM/D** or Last Notice to **Mariners** Number / Date.

## NOTICES TO MARINERS WEBSITE – MONTHLY EDITIONS, CHART CORRECTIONS, AND CHART PATCHES

The Notices to Mariners website allows users to access the [monthly publications](#), [chart corrections](#), and [chart patches](#).

Users can subscribe for free to the [email notification service](#) to receive notifications when charts of interest are updated, including their patches, as well as when a new monthly edition becomes available online.

In addition, the monthly publication and related files to download, such as chart patches and *Sailing Directions* diagrams, can be obtained all together through the download of a single ZIP file.

## ADVISORY NAVIGATIONAL WARNINGS / NOTICES TO SHIPPING

The Canadian Coast Guard is implementing a number of changes to the aids to navigation system in Canada.

These changes are advertised as Navigational Warnings, formerly called Notices to Shipping<sup>1</sup>, that are broadcast by the Canadian Coast Guard, and are then followed up with Notices to Mariners, then charts are updated by hand correction, reprints or new editions.

Mariners are advised that all relevant Navigational Warnings (NAVWARNs) should be kept until superseded by Notices to Mariners or through revised charts issued by the Canadian Hydrographic Service (CHS).

Navigational Warnings are accessible on the applicable regional page on the Canadian Coast Guard e-Navigation Maritime Information Portal at <http://www.marinfo.gc.ca/e-nav>.

The Canadian Hydrographic Service is reviewing the impact of these changes with the Canadian Coast Guard and together are preparing an action plan on the issuing of chart revisions.

For further information, contact your regional Navigational Warning (NAVWARN) Issuing Desk.

### Atlantic Region

#### \* Port aux Basques MCTS Centre

Canadian Coast Guard  
49 Stadium Rd.  
P.O. Box 99  
Port aux Basques, NL A0M 1C0

Telephone: (709) 695-2168 or 1-800-563-9089  
Facsimile: (709) 695-7784

Email: [NAVWARN.MCTSPortAuxBasques@innav.gc.ca](mailto:NAVWARN.MCTSPortAuxBasques@innav.gc.ca)  
Website: <http://www.marinfo.gc.ca/e-nav>

#### \* Sydney MCTS Centre

Canadian Coast Guard  
1190 Westmount Road  
Sydney, NS B1R 2J6

Telephone: (902) 564-7751 or 1-800-686-8676  
Facsimile: (902) 564-7662

Email: [NAVWARN.MCTSSydney@innav.gc.ca](mailto:NAVWARN.MCTSSydney@innav.gc.ca)  
Website: <http://www.marinfo.gc.ca/e-nav>

### Central Region

#### \* Prescott MCTS Centre

Canadian Coast Guard  
401 King Street West  
P.O. Box 1000  
Prescott, ON K0E 1T0

"C" and "Q" Series  
Telephone: (613) 925-0666  
Facsimile: (613) 925-4519

Email: [NAVWARN.MCTSPrescott@innav.gc.ca](mailto:NAVWARN.MCTSPrescott@innav.gc.ca)  
Website: <http://www.marinfo.gc.ca/e-nav>

### Arctic Region

#### \* Iqaluit MCTS Centre

*Operational from approximately mid-May until late December.*

Canadian Coast Guard  
P.O. Box 189  
Iqaluit, NU X0A 0H0

"A" Series  
Telephone: (867) 979-5269

"H" Series  
Telephone: (867) 979-0310

Facsimile: (867) 979-4264  
Email: [NAVWARN.MCTSIqaluit@innav.gc.ca](mailto:NAVWARN.MCTSIqaluit@innav.gc.ca)  
Website: <http://www.marinfo.gc.ca/e-nav>

\* Service available in English and French.

---

<sup>1</sup> The expression "Notice to Shipping" was changed to "Navigational Warning" in January 2019.

**INDEX**

**SECTION 1 – GENERAL AND SAFETY INFORMATION 1**

Transport Canada – Restricted Speed Area - St. Clair and Detroit Rivers ..... 1

Canadian Coast Guard Publication – Comments and Suggestions on Notices to Mariners (Notmar) Publications ..... 1

Canadian Hydrographic Service – Modifications to the 2020 Canadian Tide and Current Tables Volume 1 – Atlantic Coast and Bay of Fundy ..... 1

Saguenay-St. Lawrence Marine Park and Surrounding Waters – Whale Protection ..... 1

Transport Canada – COVID-19 Measures, Updates and Guidance ..... 2

Canadian Hydrographic Service – Modifications to the 2020 Canadian Tide and Current Tables, Volume 2 – Gulf of St. Lawrence ..... 2

Saguenay–St. Lawrence Marine Park - Beluga Whale Protection: Slowdown Area at the Mouth of the Saguenay Fjord and Area Closure at Baie Sainte-Marguerite ..... 3

Gulf of St. Lawrence – Protection of the North Atlantic Right Whale ..... 5

Canadian Hydrographic Service – Canadian Tide and Current Tables – Printing to be Discontinued ..... 10

Canadian Hydrographic Service – Chart 1 – Printing to be Discontinued ..... 10

Canadian Hydrographic Service – Notices to Mariners for Changes in Buoy Shape ..... 11

Canadian Coast Guard– Iridium SafetyCast Service ..... 11

\*1001 Canadian Hydrographic Service – Nautical Charts ..... 11

\*1002 Canadian Hydrographic Service – Electronic Navigational Charts ..... 11

\*1003 Canadian Hydrographic Service – Raster Digital Charts (BSB V3) ..... 11

\*1004 Transport Canada – Ship Safety Bulletins #21 and #22/2020 ..... 12

\*1006 Cape Tormentine à / to West Point – Buoy Changed and Repositioned ..... 12

\*1007 Plans Baie des Chaleurs / Chaleur Bay - Côte sud / South Shore – Unlit Buoy Repositioned ..... 12

\*1009(P) Halifax Harbour: Point Pleasant to / à Bedford Basin – Bell to be Discontinued ..... 12

\*1010(P) Halifax Harbour: Black Point to / à Point Pleasant – Notice of Proposed Changes ..... 13

\*1011(P) Détroit de Northumberland / Northumberland Strait: Partie Ouest / Western Portion: Ports / Harbours – Light to be Discontinued ..... 14

\*1012(T) Kingston Harbour and Approaches/et les approches – Construction Operations ..... 14

**SECTION 2 – CHART CORRECTIONS 15**

**SECTION 3 – RADIO AIDS TO MARINE NAVIGATION CORRECTIONS N/A**

**SECTION 4 – SAILING DIRECTIONS AND SMALL CRAFT GUIDE CORRECTIONS 31**

**SECTION 5 – LIST OF LIGHTS, BUOYS AND FOG SIGNALS CORRECTIONS 32**

**NUMERICAL INDEX OF CANADIAN CHARTS AFFECTED**

This numerical index lists all nautical charts mentioned in this monthly edition of Notices to Mariners. Only charts appearing in Section 2 of this publication require a chart correction. The appearance of charts in all other sections, particularly those related to the correction of other nautical publications, is included here for reference.

<b>Chart No.</b>	<b>Page</b>	<b>Chart No.</b>	<b>Page</b>	<b>Chart No.</b>	<b>Page</b>	<b>Chart No.</b>	<b>Page</b>
1226	<a href="#">15</a>	4405	<a href="#">22, 35</a>	8011	<a href="#">28</a>		
1236	<a href="#">15</a>	4425	<a href="#">22, 23</a>	8012	<a href="#">28</a>		
1310	<a href="#">15, 16</a>	4426	<a href="#">23, 34</a>	8047	<a href="#">28</a>		
1320	<a href="#">39</a>	4459	<a href="#">35</a>	8048	<a href="#">29</a>		
2017	<a href="#">14</a>	4472	<a href="#">35</a>				
2181	<a href="#">16</a>	4491	<a href="#">23, 36</a>				
2250	<a href="#">39</a>	4592	<a href="#">33</a>				
3910	<a href="#">11</a>	4661	<a href="#">23</a>				
4000	<a href="#">16</a>	4667	<a href="#">23, 24, 32</a>				
4001	<a href="#">16, 17</a>	4679	<a href="#">24, 32</a>				
4006	<a href="#">17</a>	4730	<a href="#">24</a>				
4013	<a href="#">17</a>	4821	<a href="#">24, 32</a>				
4015	<a href="#">17</a>	4822	<a href="#">24</a>				
4021	<a href="#">17</a>	4844	<a href="#">32</a>				
4023	<a href="#">17</a>	4847	<a href="#">24, 33</a>				
4024	<a href="#">17, 18</a>	4863	<a href="#">24, 25, 33</a>				
4045	<a href="#">18</a>	4881	<a href="#">25, 32</a>				
4047	<a href="#">18</a>	4905	<a href="#">12, 25, 36</a>				
4049	<a href="#">18</a>	4906	<a href="#">25</a>				
4202	<a href="#">12</a>	4909	<a href="#">14, 26, 38</a>				
4203	<a href="#">13</a>	4911	<a href="#">26, 34</a>				
4227	<a href="#">18</a>	4913	<a href="#">26, 27, 34</a>				
4235	<a href="#">18, 19</a>	4920	<a href="#">12, 27, 34</a>				
4236	<a href="#">19, 20, 33, 34</a>	5001	<a href="#">27</a>				
4374	<a href="#">20</a>	5024	<a href="#">27</a>				
4375	<a href="#">20</a>	5048	<a href="#">27</a>				
4376	<a href="#">20, 21</a>	5134	<a href="#">28</a>				
4377	<a href="#">21</a>	5138	<a href="#">28, 32, 33</a>				

#### TRANSPORT CANADA – RESTRICTED SPEED AREA - ST. CLAIR AND DETROIT RIVERS

(Recurrent publication of notice \*1103/12, originally published in the *Notices to Mariners Publication - Eastern Edition 11/2012*.)

Since November 14, 2012, the restricted speed area currently in place as per the St. Clair and Detroit River Navigation Safety Regulations between the Detroit River light and Peche Island light is reduced in size by relocating the southern point of the restricted speed area from its current location at the Detroit River light to a new location at Bar Point light D33.

#### CANADIAN COAST GUARD PUBLICATION – COMMENTS AND SUGGESTIONS ON NOTICES TO MARINERS (NOTMAR) PUBLICATIONS

In an effort to continuously improve the Notices to Mariners publications and to provide the most efficient service possible, the Notices to Mariners team invites all mariners and other interested parties to submit comments and suggestions on possible improvements to its various publications and services at the following email address: [Notmar.XNCR@dfo-mpo.gc.ca](mailto:Notmar.XNCR@dfo-mpo.gc.ca)

#### CANADIAN HYDROGRAPHIC SERVICE – MODIFICATIONS TO THE 2020 CANADIAN TIDE AND CURRENT TABLES VOLUME 1 – ATLANTIC COAST AND BAY OF FUNDY

(Recurrent publication of notice \*203/20, originally published in the *Notices to Mariners Publication - Eastern Edition 02/2020*.)

The Canadian Hydrographic Service of the Atlantic Region has identified an error in the 2020 Canadian Tide and Current Tables Volume 1 - Atlantic Coast and Bay of Fundy, Tide tables for Holyrood, Newfoundland (station #925)

**Mariners must refer to the following link for updated information on Holyrood's Tide Tables:**  
[http://tides.gc.ca/eng/data/table/2020/wlev\\_sec/925](http://tides.gc.ca/eng/data/table/2020/wlev_sec/925)

#### SAGUENAY-ST. LAWRENCE MARINE PARK AND SURROUNDING WATERS – WHALE PROTECTION

(Recurrent publication of notice \*404/20, originally published in the *Notices to Mariners Publication - Eastern Edition 04/2020*.)

The waters in and around the Saguenay–St. Lawrence Marine Park are well known for the resident endangered beluga population and the wide diversity of whales that migrate there to feed, particularly between April and November.

##### REGULATORY PROTECTION MEASURES

All whale species that are found in the St. Lawrence are protected under the *Marine Mammal Regulations*, pursuant to the *Fisheries Act*. Within the boundaries of the Marine Park, specific measures are set out in the *Marine Activities in the Saguenay–St. Lawrence Marine Park Regulations*, pursuant to the establishment of the *Saguenay–St. Lawrence Marine Park Act*. Any collision with a marine mammal within the Marine Park must immediately be reported to a park warden at 1-866-508-9888. For collisions that occur outside the Marine Park or for any situation involving a marine mammal that is dead or in trouble, contact the emergency network at 1-877-722-5346 or on VHF channel 16.

For more information on the Saguenay–St. Lawrence Marine Park, see notice 5C of the *Notices to Mariners Annual Edition 2020*.

##### VOLUNTARY PROTECTION MEASURES

Provisional measures in effect from May 1 to October 31, 2020. See map at the end of this notice.

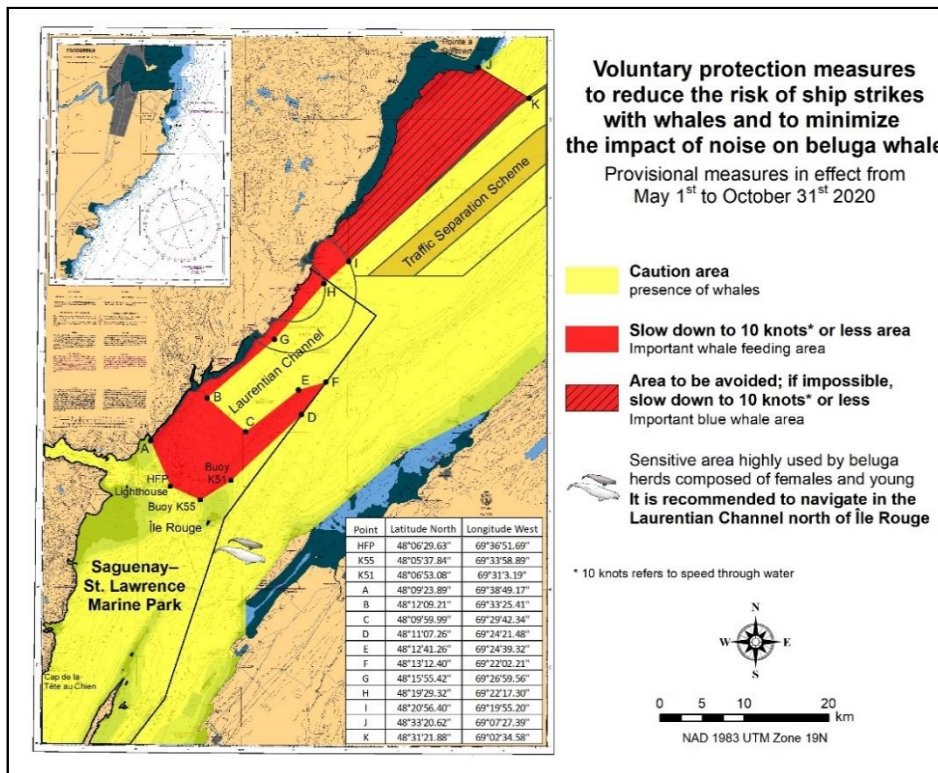
These measures apply to merchant vessels and cruise ships between Pointe à Boisvert and Cap de la Tête au Chien to prevent collisions with whales. These measures should only be taken when they will not jeopardize navigational safety.

**Caution area (yellow area):** To reduce the risk of collisions with whales that can be present anywhere in this area, heightened vigilance of navigators is critical. Posting a lookout is recommended in order to increase the chances of seeing the whales and thus taking necessary measures to avoid them. If bypassing the whales is not possible, slow down and wait for the animals to move away to a distance greater than 400 metres (0.215 nautical miles) before resuming original speed. It is more difficult to see the animals at night therefore increased caution is recommended.



**Slow down to 10 knots or less area (red area):** To reduce the risk of collisions with whales in this feeding area, it is recommended that vessels slow down to a maximum speed through the water of 10 knots and post a lookout. It is further recommended to remain in the Laurentian Channel to the north of Île Rouge to minimize the impact of noise in a sensitive area south of this island, which is highly frequented by herds of beluga whales composed of females and young.

**Area to be avoided (hatched red area):** To reduce noise and the risk of collisions with whales, vessels should avoid transiting through this area which is highly frequented by blue whales, an endangered species. If the area cannot be avoided, slow down to a speed through the water of 10 knots or less.



**TRANSPORT CANADA – COVID-19 MEASURES, UPDATES AND GUIDANCE**

(Recurrent publication of notice \*401/20, originally published in the *Notices to Mariners Publication - Eastern Edition 04/2020*.)

Please refer to the link below for the latest updates to transportation related measures taken by Transport Canada in response to the evolving novel Coronavirus disease (COVID-19):

<https://www.tc.gc.ca/en/initiatives/covid-19-measures-updates-guidance-tc.html>

For travel advice and all other updates, please visit: [Canada.ca/coronavirus](https://Canada.ca/coronavirus)

**CANADIAN HYDROGRAPHIC SERVICE – MODIFICATIONS TO THE 2020 CANADIAN TIDE AND CURRENT TABLES, VOLUME 2 – GULF OF ST. LAWRENCE**

(Recurrent publication of notice \*506/20, originally published in the *Notices to Mariners Publication - Eastern Edition 05/2020*.)

The Canadian Hydrographic Service of the Quebec Region has identified a correction in the 2020 Canadian Tide and Current Tables, Volume 2, Gulf of St. Lawrence, on page 79.

**Mariners should replace a section of Table 3 with the corresponding section annexed below:**

<https://www.notmar.gc.ca/publications/monthly-mensuel/images/ed052020-part1-vol2-p79.pdf>

**SAGUENAY–ST. LAWRENCE MARINE PARK - BELUGA WHALE PROTECTION: SLOWDOWN AREA AT THE MOUTH OF THE SAGUENAY FJORD AND AREA CLOSURE AT BAIE SAINTE-MARGUERITE**

(Recurrent publication of notice \*605/20, originally published in the *Notices to Mariners Publication - Eastern Edition 06/2020*.)

The Saguenay–St. Lawrence Marine Park and its surrounding area are at the heart of endangered beluga whale critical summer habitat. Marine mammal protection measures have been put in place in accordance with the *Marine Activities in the Saguenay–St. Lawrence Marine Park Regulations* within the limits of the Marine Park.

However, important feeding, calving and rearing areas for beluga whales require greater protection to ensure the recovery of the species. The portion of the Saguenay situated between the mouth of the Fjord and Baie Sainte-Marguerite is one of the areas most used by females and their young from May to October. The mouth of the Saguenay is known as a feeding ground and Baie Sainte-Marguerite as a calving and rearing area.

In order to prevent collisions with beluga whales, a compulsory 15-knot slowdown area is in effect from May 1<sup>st</sup> to October 31<sup>st</sup> at the mouth of the Saguenay. To ensure tranquility for female belugas and their young during the critical calving period, access to Baie Sainte-Marguerite is prohibited to all vessels from June 21<sup>st</sup> to September 21<sup>st</sup>, except for special authorizations (see description below).

For safety reasons, *the slowdown area measure at the mouth of the Saguenay Fjord does not apply* to cargo ships (see the monthly edition of *Notice to Mariners* from May to October for voluntary protection measures in the St. Lawrence Estuary). An enhanced vigilance is, however, recommended to all navigators between the mouth of the Saguenay Fjord and Baie Sainte-Marguerite for the protection of beluga whales.

For more information on the Saguenay–St. Lawrence Marine Park, see notice 5C of the *Notices to Mariners Annual Edition 2020* or visit <http://parcmarin.qc.ca/home/>.

**REGULATORY PROTECTION MEASURES — BELUGA WHALE**

**Entire Marine Park Territory:**

- When beluga whales are less than half a nautical mile (926 metres) from a motorized vessel, the vessel must maintain a speed of between 5 and 10 knots.
- All vessels, including human-powered vessels (kayaks and canoes), must continue to move forward and maintain their heading.
- All vessels must maintain a minimum distance of 400 metres from beluga whales at all times.

For more information concerning the regulations, consult: <http://marinepark.ca/protect/#regulations>.

**Mouth of the Saguenay Fjord (Figure 1) — Slowdown Area (area cross-hatched in red):**

- Maximum speed at the mouth of the Saguenay between buoys S7 and S8 and the ferry docks between Baie-Sainte-Catherine and Tadoussac is 15 knots from May 1<sup>st</sup> to October 31<sup>st</sup>.

**Baie Sainte-Marguerite (Figure 2) — Area Closure (red area):**

- From June 21<sup>st</sup> to September 21<sup>st</sup>, vessels must not enter the red area, which follows a line between Cap Nord-Ouest and Cap Sainte-Marguerite.
- Special authorizations are granted only for kayaks, canoes and recreational fishermen who must travel without stopping along a corridor within 10 metres of the shore or in shallow areas.

**VOLUNTARY PROTECTION MEASURES**

**Baie Sainte-Marguerite sector (Figure 2) — Transit Area (area cross-hatched in yellow):**

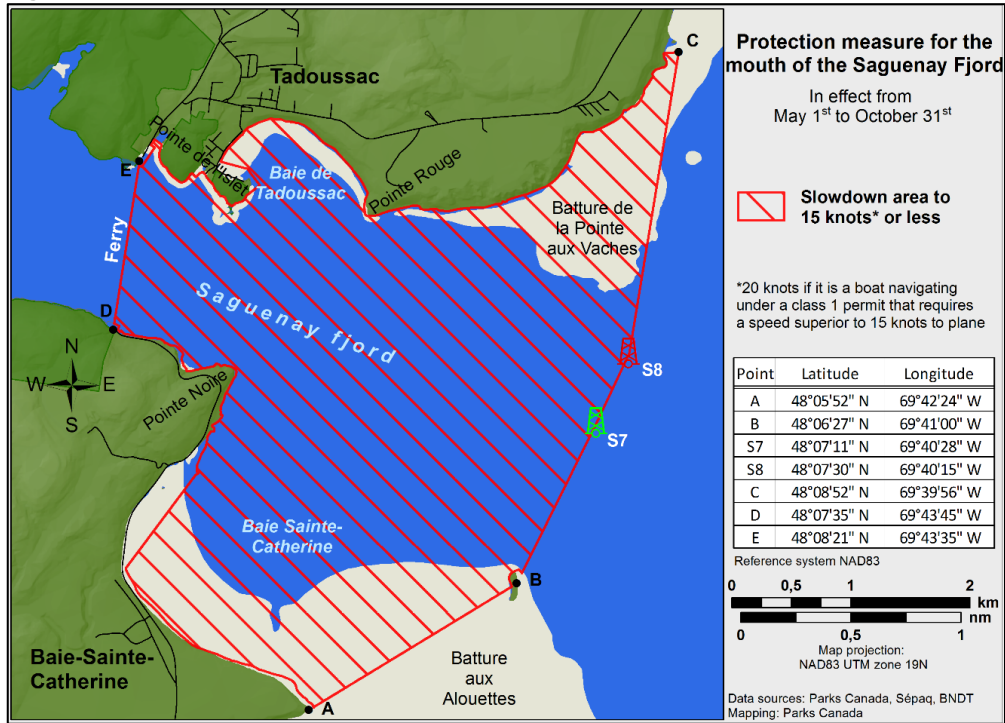
- From June 21<sup>st</sup> to September 21<sup>st</sup>, navigation in this area is recommended at a speed of between 5 and 10 knots without stopping.

The purpose of this transit area is to favour respect of the *Marine Activities in the Saguenay–St. Lawrence Marine Park Regulations*, since beluga whales are often present in the Baie Sainte-Marguerite sector.

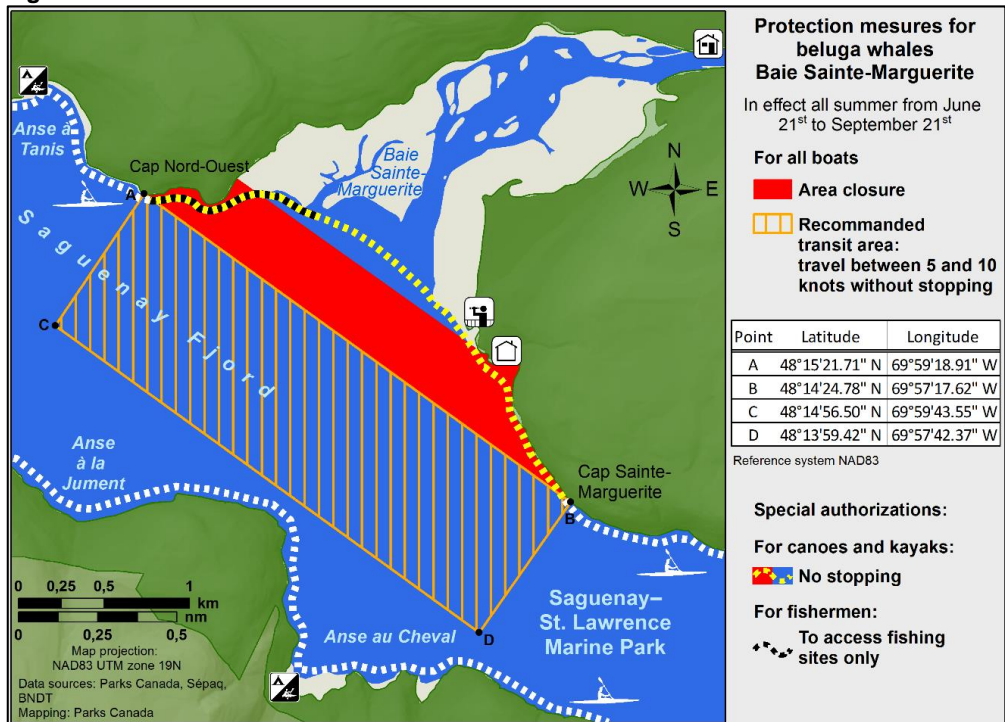
**INFORMATION**

All incidents, including collisions with whales, must be reported without delay by dialling 1-866-508-9888. For any other situation concerning a marine mammal that is either dead or in trouble, contact the emergency network at 1-877-722-5346, or use VHF channel 16.

**Figure 1**



**Figure 2**



## GULF OF ST. LAWRENCE – PROTECTION OF THE NORTH ATLANTIC RIGHT WHALE

(Recurrent publication of notice \*706/20, originally published in the *Notices to Mariners Publication - Eastern Edition 07/2020*.)

Reference: Notice \*504/20 is cancelled.

Due to changing migration patterns of North Atlantic right whales and their increased presence in the Gulf of St. Lawrence, the Government of Canada has established seasonal speed restrictions in specific zones. These speed restrictions are defined as “static zones”, “dynamic shipping zones”, “seasonal management areas”, a trial “voluntary speed restriction zone” and a “restricted area”. [See the map below for details](#).

Note: Navigational Warnings with these speed restrictions are considered to be Notices to Shipping, which vessels **must follow** as per the *Interim Order Protecting North Atlantic Right Whales (Eubalaena Glacialis) in the Gulf of St Lawrence* and the *Interim Order for the protection of North Atlantic Right Whales (Eubalaena Glacialis) in and near the Shediac Valley* for the restricted area.

Speed restriction zones are described in monthly Notices to Mariners (NOTMARs), which are published by the Canadian Coast Guard (CCG). The status of these zones is broadcast through Navigational Warnings (NAVWARNs), which are published by the CCG’s Marine Communications and Traffic Services (MCTS) Centres.

### Changes to speed restriction zones

Based on consultations with industry and on scientific data, changes to the speed restriction zones will be effective from April 28<sup>th</sup>, 2020, while the [restricted area](#) will be implemented as per the *Interim Order for the Protection of North Atlantic Right Whales (Eubalaena glacialis) in and near the Shediac Valley*.

- Portions of the static zones located north and south of dynamic shipping zone E are now changed to seasonal management area 1 (north of dynamic shipping zone E) and seasonal management area 2 (south of dynamic shipping zone E).
- A trial voluntary speed restriction of 10.0 knots over the ground spanning from Cabot Strait (a line running from Cape North NS to Cape Ray NL) to the eastern edge of dynamic shipping zone E, at the beginning and end of the season.
- A restricted area located in and near the Shediac Valley, determined based on aggregation of North Atlantic right whales.

Please refer to the latest NAVWARN issued by the CCG-MCTS for all speed restrictions currently in effect.

### Speed Restriction Measures for 2020

These restrictions will be in effect from **April 28 to November 15, 2020**.

#### Static zones

In the static zones, **all** vessels above **13 m** in length overall (LOA) must proceed at a speed of not more than 10.0 knots over the ground.

#### Coordinates for the northern static zone:

- 50° 20' N 065° 00' W
- 49° 13' N 065° 00' W
- 48° 40' N 064° 13' W
- 48° 40' N 062° 40' W
- 48° 03' N 061° 07.5' W
- 47° 58.1' N 061° 03.5' W
- 48° 00' N 061° 00' W
- 49° 04' N 061° 00' W
- 49° 04' N 062° 00' W
- 49° 43' N 063° 00' W
- 50° 20' N 063° 00' W

#### Coordinates for the southern static zone:

- 48° 40' N 065° 00' W
- 48° 40' N 062° 40' W
- 48° 03' N 061° 07.5' W
- 47° 58.1' N 061° 03.5' W
- 47° 10' N 062° 30' W
- 47° 10' N 065° 00' W

Mariners will be notified ahead via a NAVWARN should the speed restriction status change, due to inclement weather.

Within any static zone that is not subject to a speed restriction, mariners may proceed at a safe operational speed. Mariners are however encouraged to take into consideration the potential for their vessel striking North Atlantic right whales when considering a “safe operational speed” during navigation.

### Dynamic shipping zones

There are five dynamic shipping zones (DSZ) located in the routing systems north and south of Anticosti Island: A, B, C, D and E

#### Coordinates for the dynamic shipping zones:

- |   |   |   |
|---|---|---|
| <b>Zone A</b> <ul style="list-style-type: none"><li>• 49° 41' N 065° 00' W</li><li>• 49° 20' N 065° 00' W</li><li>• 49° 11' N 064° 00' W</li><li>• 49° 22' N 064° 00' W</li></ul> | <b>Zone B</b> <ul style="list-style-type: none"><li>• 49° 22' N 064° 00' W</li><li>• 49° 11' N 064° 00' W</li><li>• 48° 48' N 063° 00' W</li><li>• 49° 00' N 063° 00' W</li></ul>   | <b>Zone C</b> <ul style="list-style-type: none"><li>• 49° 00' N 063° 00' W</li><li>• 48° 48' N 063° 00' W</li><li>• 48° 24' N 062° 00' W</li><li>• 48° 35' N 062° 00' W</li></ul> |
| <b>Zone D</b> <ul style="list-style-type: none"><li>• 50° 16' N 064° 00' W</li><li>• 50° 00' N 064° 00' W</li><li>• 49° 56' N 063° 00' W</li><li>• 50° 16' N 063° 00' W</li></ul> | <b>Zone E</b> <ul style="list-style-type: none"><li>• 48° 35' N 062° 00' W</li><li>• 48° 24' N 062° 00' W</li><li>• 48° 03' N 061° 07.5' W</li><li>• 47° 58.1' N 061° 03.5' W</li><li>• 48° 00' N 061° 00' W</li><li>• 48° 10.5' N 061° 00' W</li></ul> |   |

If the Government of Canada does not detect North Atlantic right whales in these zones, vessels may transit through them at a safe operational speed.

When the Government of Canada detects a North Atlantic right whale in a dynamic shipping zone, vessels above **13 m** in length overall (LOA):

- will be notified through a NAVWARN; and
- must proceed at a speed of not more than 10.0 knots over the ground within that zone.

### Speed restrictions in the dynamic shipping zones

The detection of North Atlantic right whales in one or more dynamic shipping zone(s), will trigger a speed restriction in the concerned zone(s). The speed restriction in the dynamic shipping zone(s) will be in effect for 15 days from the date of issuance of the NAVWARN. We may extend a speed restriction past the 15 days if North Atlantic right whales continue to be detected.

When a NAVWARN is issued implementing a speed restriction in one or more dynamic shipping zone(s), vessels above **13 m** in length (LOA) must not exceed a speed of 10.0 knots over the ground.

Within any zone that is not subject to a speed restriction, mariners may proceed at a safe operational speed. Mariners are however encouraged to take into consideration the potential for their vessel striking North Atlantic right whales when considering a “safe operational speed” during navigation.

### Seasonal management areas

Seasonal management area 1 (SMA-1) and seasonal management area 2 (SMA-2) are speed restriction areas located north and south of dynamic shipping zone E, respectively.

Within seasonal management areas, vessels above **13 m** in length (LOA):

- must restrict their speed so as not to exceed 10.0 knots over the ground from April 28th to June 30th, 2020; and
- are allowed to proceed at safe operational speed from July 1st to November 15th, 2020, unless a North Atlantic right whale is detected. If a whale is detected, a speed restriction of 10.0 knots over the ground will be triggered for 15 days from the date of issuance of the NAVWARN. The speed restriction may be extended past the 15 days if North Atlantic right whales continue to be detected.

MONTHLY NOTICES TO MARINERS  
EASTERN EDITION 10/2020  
SECTION 1 – GENERAL AND SAFETY INFORMATION

---

Coordinates for the SMA-1:

- 49° 04' N 062° 00' W
- 49° 04' N 061° 00' W
- 48° 10.5' N 061° 00' W
- 48° 35' N 062° 00' W

Coordinates for the SMA-2:

- 48° 24' N 062° 00' W
- 48° 03' N 061° 07.5' W
- 47° 58.1' N 061° 03.5' W
- 47° 26.69' N 062° 00' W

**Restricted area**

In the summer months, an important proportion of the total North Atlantic right whale population gathers for feeding and surface activity near the [Shediac Valley](#). Since this makes the North Atlantic right whale more susceptible to vessel collisions, a mandatory restricted area will be put in place in and near the [Shediac Valley](#). The effective date and exact location of the area were based on the observed distribution of the whales. *The Interim Order for the Protection of North Atlantic Right Whales (Eubalaena glacialis) in and near the Shediac Valley* will provide the necessary details. This information will also be communicated to mariners through navigational warnings and notices to fish harvesters.

Vessels above **13 m** in length (LOA) will be required to:

- avoid the area unless they are part of the exceptions listed in the IO;
- exempted vessels transiting the area must do so at a speed not exceeding 8.0 knots over the ground.

The location and dimension of the restricted area will not be modified.

**Trial voluntary speed restriction in Cabot Strait**

To coincide with the North Atlantic right whales entering and exiting the Gulf of St. Lawrence, we are putting in place a trial voluntary speed restriction in Cabot Strait from April 28th to June 15th, 2020, and from October 1st to November 15th, 2020.

- During this period, vessels above 13 m in length (LOA) will be asked to voluntarily reduce their speed so as to not exceed 10.0 knots over the ground.
- Outside of the restriction period, vessels will be able to proceed at safe operational speeds.

**Voluntary speed restriction zone coordinates:**

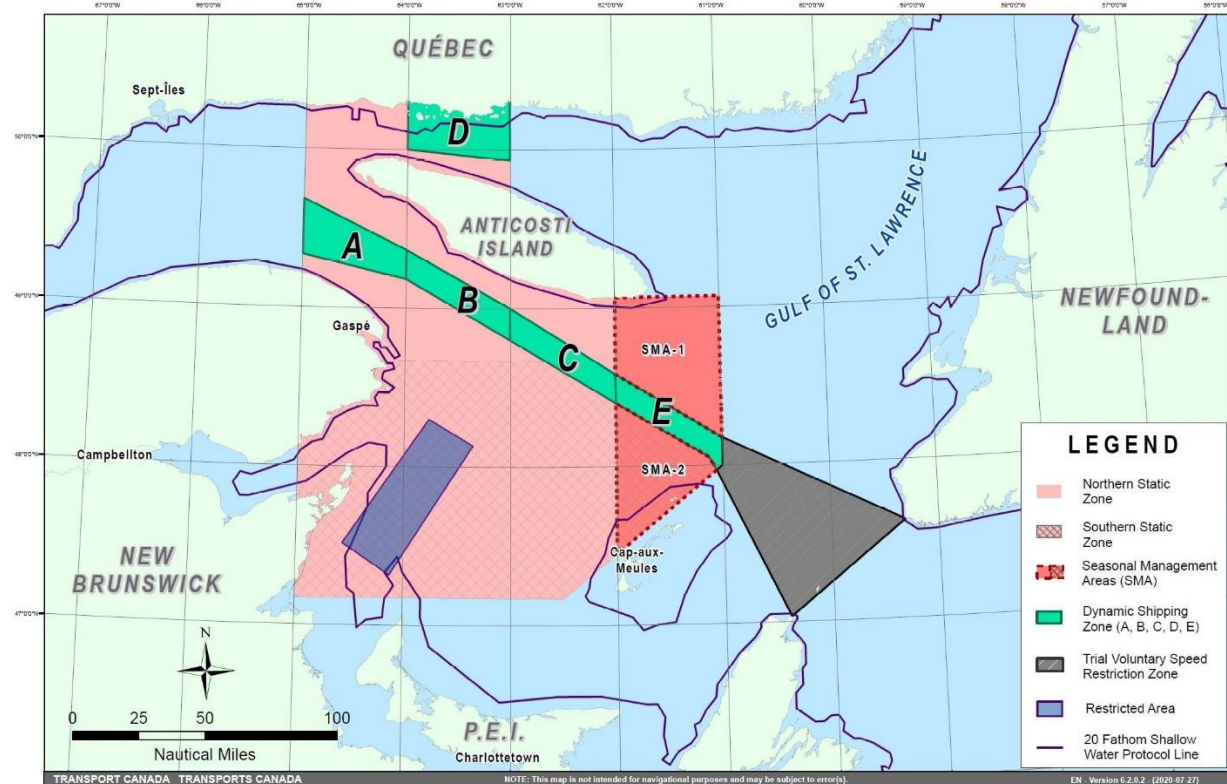
- 48° 10.5' N 061° 00' W
- 47° 37.2' N 059° 18.5' W
- 47° 02' N 060° 23.7' W
- 47° 58.1' N 061° 03.5' W
- 48° 00' N 061° 00' W

**Map of the Gulf of St. Lawrence**

The following map shows

- the speed restriction zone, in pink (static zones);
- the dynamic shipping zones, in green;
- the seasonal management areas, in dark pink;
- the trial voluntary speed restriction zone, in grey; and
- the restricted area, in dark blue.

MONTHLY NOTICES TO MARINERS  
EASTERN EDITION 10/2020  
SECTION 1 – GENERAL AND SAFETY INFORMATION



Map showing the two static zones (north and south), the five dynamic shipping zones (A, B, C, D and E), the seasonal management areas, the restricted area, the trial voluntary speed restriction zone and the 20 fathom shallow water protocol line.

This map is for visual representation only and is not to be used for navigation or enforcement.

### NAVWARN broadcasts

The CCG-MCTS issues and publishes NAVWARNs:

- by radio broadcast; and
- online at [Canada's Maritime Information Portal](#) and its [Navigational Warnings](#) site.

Mariners must ensure they have accurate and up-to-date information about the protection of the North Atlantic right whale, as in all applicable NOTMARS and NAVWARNs.

For the North Atlantic right whale speed restriction, the NAVWARN that is currently in effect will be provided to vessels subject to the *Vessel Traffic Services Zone Regulations* or the *Eastern Canada Vessel Traffic Services Zone Regulations*:

### Outbound vessels

- at Calling-in-Point 10 (St-Laurent); or
- upon a departure downstream from the Quebec pilot station (including the Saguenay River, Chaleur Bay, Miramichi Bay, etc.)

### Inbound vessels

- when a clearance to enter Canadian waters is granted

### Vessels in transit

- at the last reporting point prior to entering the speed restriction area; and/or
- at 10 nautical miles prior to entering the speed restriction zone

For those vessels not subject to the above-mentioned regulations, vessel operators are required to monitor broadcasts by the Canadian Coast Guard's Marine Communications and Traffic Services (MCTS) network for the most up to date information. For marine radio frequencies and broadcast times, information may be found in the [Radio Aids to Marine Navigation](#) publication.

### Aids to navigation

The Canadian Coast Guard is currently testing virtual Automatic Identification System (AIS) aids to navigation (AIS AtoN) in specific areas. These aids notify mariners of a dynamic shipping zone subject to a speed restriction, per NOTMAR 819(T)/2016.

Each dynamic shipping zone is delimited by four virtual AIS AtoN, which can be displayed on a ship's navigation equipment, such as

- Electronic Chart Display and Information System (ECDIS);
- Electronic Chart System (ECS);
- RADAR;
- Minimum Keyboard Display (MKD); and
- Electronic Nautical Chart (ENC).

The Canadian Coast Guard broadcasts the virtual AIS AtoN only when a speed restriction is in effect in one or more testing zones.

Mariners must select the virtual AIS AtoN symbol to view a message such as "SectA1 Spd Lim 10 kt." This message refers to a speed restriction in effect for a specific zone.

Note: This system is not the primary way we communicate this information.

### Compliance and enforcement

You must comply with the Interim Orders made pursuant to the *Canada Shipping Act, 2001*, and any NAVWARNs broadcasted and published by the Canadian Coast Guard relating to the Interim Orders, aimed at regulating the navigation for the purposes of protecting the North Atlantic right whales.

If you do not comply with the Interim Orders or instructions in the NAVWARNs related to the Interim Orders, you could face:

- administrative monetary penalties up to a maximum of CAN \$250,000; and/or
- penal sanctions under the *Canada Shipping Act, 2001*.

If your vessel appears to have violated the speed restriction, Transport Canada Marine Safety inspectors will review all information provided through AIS and seek an explanation from the master.

No exemptions to the speed restriction will be granted in advance. However, if a deviation from the speed restrictions is necessary for safety reasons, the following information must be entered into the bridge logbook:

- Reasons for deviation
- Speed at which vessel is operated
- Latitude and longitude at time of deviation
- Time and duration of deviation
- Master of the vessel shall sign and date the bridge logbook entry



For any deviation, Transport Canada will review and consider reasons such as

- Navigating to ensure vessel safety;
- Weather conditions;
- Force majeure (unforeseeable circumstances); and
- Responding to emergencies.

**Report a North Atlantic right whale sighting**

If you see a North Atlantic right whale that is entangled, injured or dead, please report it to your nearest Canadian Coast Guard Marine Communications and Traffic Services Centre, or as follows:

**Southern part of the Gulf of St. Lawrence**

Marine Animal Response Society  
Telephone: 1-866-567-6277

**Newfoundland and Labrador**

Whale Release and Strandings  
Telephone: 1-888-895-3003

**For the Québec Sector**

Marine Mammal Emergencies  
Telephone: 1-877-722-5346

**If you see live, free-swimming whales**

- Call 1-902-440-8611 (local) or 1-844-800-8568 (toll free)
- Email: [XMARWhalesightings@dfo-mpo.gc.ca](mailto:XMARWhalesightings@dfo-mpo.gc.ca)

**Please consult WhaleMap for the latest right whale observations:**

<https://whalemap.ocean.dal.ca/>

**CANADIAN HYDROGRAPHIC SERVICE – CANADIAN TIDE AND CURRENT TABLES – PRINTING TO BE DISCONTINUED**

(Recurrent publication of notice \*904/20, originally published in the *Notices to Mariners Publication - Eastern Edition 09/2020*.)

Due to the availability of the *Canadian Tide and Current Tables* as [viewable and printable PDF files](#) on charts.gc.ca for each complete volume and [additional information in different formats](#) (predictions, observations in tables, and graphics) on tides.gc.ca, the Canadian Hydrographic Service is permanently discontinuing the printing of all volumes of *Canadian Tide and Current Tables* starting January 2021.

Advances in technology bring a new era of marine navigation with a focus on digital and electronic products. The Canadian Hydrographic Service is transforming the way it delivers quality data and services to clients, in a timely manner, to support decision-making.

For more information, visit [www.charts.gc.ca](http://www.charts.gc.ca).

**CANADIAN HYDROGRAPHIC SERVICE – CHART 1 – PRINTING TO BE DISCONTINUED**

(Recurrent publication of notice \*905/20, originally published in the *Notices to Mariners Publication - Eastern Edition 09/2020*.)

Due to the availability of *Chart 1: Symbols, Abbreviations and Terms* as both [viewable and printable PDF files](#) and [HTML](#) format on charts.gc.ca, the Canadian Hydrographic Service is permanently discontinuing the printing of *Chart 1: Symbols, Abbreviations and Terms* starting January 2021.

Advances in technology bring a new era of marine navigation with a focus on digital and electronic products. The Canadian Hydrographic Service is transforming the way it delivers quality data and services to clients, in a timely manner, to support decision-making.

For more information, visit [www.charts.gc.ca](http://www.charts.gc.ca).

**CANADIAN HYDROGRAPHIC SERVICE – NOTICES TO MARINERS FOR CHANGES IN BUOY SHAPE**

(Recurrent publication of notice \*906/20, originally published in the *Notices to Mariners Publication - Eastern Edition 09/2020*.)

As part of the CHS Digital Transformation and for the sake of economy, CHS will no longer systematically issue Notices to Mariners (NTM) for buoy shape changes only. These changes will, however, be applied to electronic navigation charts (ENCs) where applicable. The paper and raster versions will be updated during the New Edition process.

**CANADIAN COAST GUARD – IRIDIUM SAFETYCAST SERVICE**

(Recurrent publication of notice \*907/20, originally published in the *Notices to Mariners Publication - Eastern Edition 09/2020*.)

The International Maritime Organization (IMO) and the International Hydrographic Organization (IHO) announced the establishment of the Iridium SafetyCast Service as a recognized mobile satellite service in the Global Maritime Distress and Safety System (GMDSS).

Effective October 1<sup>st</sup> 2020, an Iridium SafetyCast Service for broadcasting navigational warnings in the English language will be declared to be in an "Initial Operational Capability" (IOC) for Canada's Arctic NAVAREAs XVII and XVIII.

During the Iridium SafetyCast IOC period, navigational warnings will be broadcast in accordance with the Revised Joint IMO/IHOWMO Maritime Safety Information Manual on an intermittent and test basis. The IOC period is a test and evaluation stage which is necessary to ensure navigational warnings are processed and promulgated in a timely and appropriate manner. NAVAREAs XVII and XVIII will broadcast Iridium SafetyCast messages to vessels with an approved SafetyCast receiver. On vessels with Iridium GMDSS terminals installed, mariners are advised to check their manufacturer's operation manuals to obtain information on the setting of their SafetyCast receivers to receive relevant SafetyCast messages.

During this period, the Canadian Coast Guard will not guarantee service availability.

Determination when NAVAREAs XVII and XVIII is ready to establish "Full Operational Capability" (FOC) will come at a later date and will be announced through a subsequent Notice to Mariners.

**\*1001 CANADIAN HYDROGRAPHIC SERVICE – NAUTICAL CHARTS**

CHARTS	MAIN TITLE	SCALE	PUBLISHED	CAT#	PRICE
<b>New Editions</b>					
3910	Plans - Milbanke Sound and/et Beauchemin Channel	1:20 000	11-SEP-2020	2	20.00

**\*1002 CANADIAN HYDROGRAPHIC SERVICE – ELECTRONIC NAVIGATIONAL CHARTS**

S-57 ENC NUMBER	CHART TITLE
<b>NEW PRODUCTS</b>	
CA479263	Île Mistanoque aux/to Îles Mack (Ouest/West)
CA479264	Île Mistanoque aux/to Îles Mack (Est/East)
<b>WITHDRAWN PRODUCTS</b>	
CA479256	Île Mistanoque aux/to Îles Mack

**\*1003 CANADIAN HYDROGRAPHIC SERVICE – RASTER DIGITAL CHARTS (BSB V3)**

CHARTS	MAIN TITLE	SCALE	PUBLISHED
<b>New Editions</b>			
RM-3910	Plans - Milbanke Sound and/et Beauchemin Channel	1:20 000	11-SEP-2020

**\*1004 TRANSPORT CANADA – SHIP SAFETY BULLETINS #21 AND #22/2020**

New **Ship Safety Bulletins** have recently been posted on the Transport Canada website at [www.tc.gc.ca/ssb-bsn/](http://www.tc.gc.ca/ssb-bsn/).

To view or download these bulletins, please click on the link below:

[SSB#21/2020](#) – Revised Temporary Measures Regarding Marine Personnel Certificates, Discharge Books, Marine Medical Certificates & Marine Counter Services (oral examinations can now be administered virtually)  
RDIMS#16834302

[SSB#22/2020](#) – Get, or renew, safe manning documents online  
RDIMS#16803566

Sign up for [e-Bulletin](#) to receive an e-mail notice each time a new Ship Safety Bulletin is published on our website.

Contact us at [marinesafety-securitemaritime@tc.gc.ca](mailto:marinesafety-securitemaritime@tc.gc.ca) or 1-855-859-3123 (Toll Free).

**\*1006 CAPE TORMENTINE À / TO WEST POINT – BUOY CHANGED AND REPOSITIONED**

Reference Chart: 4905

The following lighted buoy has been replaced by an unlit buoy and repositioned to the following coordinates:

Abrams Village buoy DH14 from LL 1023.6 to LL 6023.6: 46° 26' 53.3"N 064° 07' 03.2"W  
(G2020-220)

**\*1007 PLANS BAIE DES CHALEURS / CHALEUR BAY - CÔTE SUD / SOUTH SHORE – UNLIT BUOY REPOSITIONED**

Reference Chart: 4920

The following unlit buoy has been repositioned to the following coordinates:

Shippagan buoy EG29 (LL 6291.2): 47° 44' 49.1"N 064° 41' 51.4"W  
(G2020-214)

**\*1009(P) HALIFAX HARBOUR: POINT PLEASANT TO / À BEDFORD BASIN – BELL TO BE DISCONTINUED**

Reference Chart: 4202

The Canadian Coast Guard proposes to permanently discontinue the bell from the following aid to navigation:

Ives Knoll light and bell buoy H22 (LL 535) (44° 37' 39.4"N 063° 32' 54.0"W)

The buoy and the light will remain.

Comments on this action are solicited from mariners and other interested parties by January 29, 2021, three months following the initial publication date of October 30, 2020. Following this date, this notice will be cancelled. Comments should be directed to the following:

Superintendent, Aids to Navigation  
Canadian Coast Guard  
P.O. Box 1236  
Charlottetown, PE C1A 7M8  
Telephone: (902) 566-7936  
Email: [claire.maclaren@dfo-mpo.gc.ca](mailto:claire.maclaren@dfo-mpo.gc.ca)

Any objections raised must state the facts on which they are based and should include supporting information on safety, commerce and public benefit.

(F2020-044)

MONTHLY NOTICES TO MARINERS  
EASTERN EDITION 10/2020  
SECTION 1 – GENERAL AND SAFETY INFORMATION

**\*1010(P) HALIFAX HARBOUR: BLACK POINT TO / À POINT PLEASANT – NOTICE OF PROPOSED CHANGES**

Reference Chart: 4203

The Canadian Coast Guard proposes to permanently change the following aids to navigation:

LL #	Aid Name	Position	Proposed Changes
523	Mars Rock light and whistle buoy H9	44° 34' 28.4"N 063° 32' 07.5"W	Discontinue the whistle. Reposition buoy to the following position: 44° 34' 19.1"N 063° 32' 11.3"W.
523.1	Mars Rock North light buoy H11	44° 34' 58.8"N 063° 32' 15.6"W	Establish a port hand buoy equipped with a green lantern with flash characteristics: Fl 0.5 s, Ec 3.5 s.
524.2	West Outer Middle Ground light buoy HK4	44° 35' 50.3"N 063° 32' 33.6"W	Discontinue buoy.
524.3	Outer Middle Ground West cardinal light buoy HKB	44° 35' 50.3"N 063° 32' 33.6"W	Establish a West cardinal buoy equipped with a white lantern with flash characteristics: Q(9) 15s.
525.2	Southeast Middle Ground light buoy HK5	44° 36' 11.3"N 063° 32' 33.6"W	Change aid ID from HK5 to H15.
526.5	Middle Ground South cardinal light buoy HKC	44° 36' 07.2"N 063° 32' 55.0"W	Establish a South cardinal buoy equipped with a white lantern with flash characteristics: Q(6)+LFl 15s.
526.6	Fergusons Cove light buoy HK17	44° 36' 21.4"N 063° 33' 17.2"W	Establish a port hand buoy equipped with a green lantern with flash characteristics: Fl 0.5 s, Ec 3.5 s.
526.7	Middle Ground West cardinal light buoy HKD	44° 36' 35.3"N 063° 32' 59.9"W	Establish a West cardinal buoy equipped with a white lantern with flash characteristics: Q(9) 15s.
527.5	Northeast Middle Ground light buoy H17	44° 36' 41.1"N 063° 32' 49.4"W	Establish a port hand buoy equipped with a green lantern with flash characteristics: Fl 0.5 s, Ec 3.5 s.
529	Pleasant Shoal light and bell buoy H19	44° 36' 58.2"N 063° 33' 08.8"W	Discontinue the bell. Reposition buoy to the following position: 44° 37' 00.3"N 063° 33' 06.9"W. Increase intensity of lantern and change flash characteristics to Fl 0.3 s, Ec 0.7 s.
530	Middle Ground North cardinal light buoy HAD	44° 36' 39.8"N 063° 32' 49.9"W	Discontinue buoy.

Comments on this action are solicited from mariners and other interested parties by January 29, 2021, three months following the initial publication date of October 30, 2020. Following this date, this notice will be cancelled. Comments should be directed to the following:

Superintendent, Aids to Navigation  
Canadian Coast Guard  
P.O. Box 1236  
Charlottetown, PE C1A 7M8  
Telephone: (902) 566-7936  
Email: [claire.maclaren@dfo-mpo.gc.ca](mailto:claire.maclaren@dfo-mpo.gc.ca)

Any objections raised must state the facts on which they are based and should include supporting information on safety, commerce and public benefit.

(F2020-040, 042, 043, 045, 046)

**\*1011(P) DÉTROIT DE NORTHUMBERLAND / NORTHUMBERLAND STRAIT: PARTIE OUEST / WESTERN PORTION:  
PORTS / HARBOURS – LIGHT TO BE DISCONTINUED**

Reference Chart: 4909

The Canadian Coast Guard proposes to permanently discontinue the following aid to navigation:

Cassie Point (LL 1113) (46° 19' 11.4"N 064° 30' 45.5"W)

Comments on this action are solicited from mariners and other interested parties by January 29, 2021, three months following the initial publication date of October 30, 2020. Following this date, this notice will be cancelled. Comments should be directed to the following:

Superintendent, Aids to Navigation  
Canadian Coast Guard  
P.O. Box 1236  
Charlottetown, PE C1A 7M8  
Telephone: (902) 566-7936  
Email: [claire.maclaren@dfo-mpo.gc.ca](mailto:claire.maclaren@dfo-mpo.gc.ca)

Any objections raised must state the facts on which they are based and should include supporting information on safety, commerce and public benefit.

(G2020-226P)

**\*1012(T) KINGSTON HARBOUR AND APPROACHES/ET LES APPROCHES – CONSTRUCTION OPERATIONS**

Reference Chart: 2017

Wharf construction is taking place daily from 1100 UTC to 2300 UTC at the Kingston-Wolfe Island ferry terminal. The ferry remains operational. Vessels are not permitted to dock on the south side. The construction area is marked and lit.

(NW-C-1786-20)

MONTHLY NOTICES TO MARINERS  
EASTERN EDITION 10/2020  
SECTION 2 – CHART CORRECTIONS

---

**1226 - Baie-Comeau - New Edition - 25-OCT-2019 - NAD 1983**

30-OCT-2020

LNMD. 10-APR-2020

Add depth of 1 metre 7 decimetres  
(See Chart No. 1, I10)  
This notice affects Electronic Navigational Chart: CA579048  
49°13'40.2"N 068°07'53.0"W

*DFO(6410468-01)*

Add depth of 1 metre 8 decimetres  
(See Chart No. 1, I10)  
This notice affects Electronic Navigational Chart: CA579048  
49°13'18.6"N 068°07'10.0"W

*DFO(6410468-03)*

Add depth of 0 metres 7 decimetres  
(See Chart No. 1, I10)  
This notice affects Electronic Navigational Chart: CA579048  
49°13'17.3"N 068°07'06.1"W

*DFO(6410468-04)*

Add depth of 1 metre 9 decimetres  
(See Chart No. 1, I10)  
This notice affects Electronic Navigational Chart: CA579048  
49°13'17.1"N 068°06'53.9"W

*DFO(6410468-05)*

**1226 - Quai public/Public Wharf - New Edition - 25-OCT-2019 - NAD 1983**

30-OCT-2020

LNMD. 10-APR-2020

Add depth of 1 metre 7 decimetres  
(See Chart No. 1, I10)  
This notice affects Electronic Navigational Chart: CA579048  
49°13'40.2"N 068°07'53.0"W

*DFO(6410468-01)*

**1226 - Quais/Wharves Cargill et Alcoa - New Edition - 25-OCT-2019 - NAD 1983**

30-OCT-2020

LNMD. 10-APR-2020

Amend 9,3 m (2011) to read 9,3 m (2018)  
(See Chart No. 1, I22)  
This notice affects Electronic Navigational Chart: CA579048  
49°14'58.4"N 068°08'00.8"W

*DFO(6410462-01)*

**1236 - Matane - New Edition - 26-OCT-2012 - NAD 1983**

02-OCT-2020

LNMD. 29-MAY-2020

Affix patch  
Download Patch - [ftp://ftp.dfo-mpo.gc.ca/patches/1236\\_6410267\\_1\\_202008311653.pdf](ftp://ftp.dfo-mpo.gc.ca/patches/1236_6410267_1_202008311653.pdf)  
This notice affects Electronic Navigational Chart: CA579040  
48°50'36.0"N 067°34'34.0"W

*DFO(6410267-01)*

**1310 - Section A-B - New Edition - 07-JUN-2019 - NAD 1983**

02-OCT-2020

LNMD. 08-NOV-2019

Add sounding of 6 metres 1 decimetre  
(See Chart No. 1, I10)  
This notice affects Electronic Navigational Chart: CA579001  
45°37'47.8"N 073°29'08.8"W

*DFO(6410449-01)*

Add sounding of 6 metres 2 decimetres  
(See Chart No. 1, I10)  
This notice affects Electronic Navigational Chart: CA579001  
45°38'13.8"N 073°29'10.6"W

*DFO(6410449-02)*

MONTHLY NOTICES TO MARINERS  
EASTERN EDITION 10/2020  
SECTION 2 – CHART CORRECTIONS

---

**1310 - Section B-C - New Edition - 07-JUN-2019 - NAD 1983**

02-OCT-2020

LNM/D. 08-NOV-2019

Add                   sounding of 6 metres 1 decimetre  
(See Chart No. 1, I10)  
This notice affects Electronic Navigational Chart: CA579001

45°37'47.8"N 073°29'08.8"W

*DFO(6410449-01)*

**2181 - Port Stanley - New Edition - 11-MAY-2007 - NAD 1983**

02-OCT-2020

LNM/D. 18-OCT-2019

Affix                   patch  
Download Patch - [ftp://ftp.dfo-mpo.gc.ca/patches/2181\\_6604685\\_1\\_202009011243.pdf](ftp://ftp.dfo-mpo.gc.ca/patches/2181_6604685_1_202009011243.pdf)

42°39'24.0"N 081°12'50.0"W

*(B2020014) DFO(6604685-01)*

**4000 - Gulf of Maine to/à Baffin Bay / Baie de Baffin - New Edition - 25-JUL-2003 - NAD 1983**

02-OCT-2020

LNM/D. 06-MAR-2020

Delete               subsurface Ocean Data Acquisition System ODAS/SADO with known  
depth of 9 metres  
(See Chart No. 1, L25)  
This notice affects Electronic Navigational Chart: CA176030

53°01'14.6"N 053°27'37.8"W

*DFO(6309223-02)*

Delete               subsurface Ocean Data Acquisition System ODAS/SADO with known  
depth of 9 metres  
(See Chart No. 1, L25)

50°24'40.0"N 049°11'45.3"W

*DFO(6309223-03)*

Delete               subsurface Ocean Data Acquisition System ODAS/SADO with known  
depth of 9 metres  
(See Chart No. 1, L25)  
This notice affects Electronic Navigational Chart: CA276515

44°58'04.0"N 048°44'00.9"W

*DFO(6309223-04)*

Delete               subsurface Ocean Data Acquisition System ODAS/SADO with known  
depth of 9 metres  
(See Chart No. 1, L25)  
This notice affects Electronic Navigational Chart: CA276091

44°11'33.8"N 053°16'29.2"W

*DFO(6309223-05)*

**4001 - Gulf of Maine to Strait of Belle Isle / au Detroit de Belle Isle - New Edition - 01-DEC-1995 - NAD 1983**

02-OCT-2020

LNM/D. 28-AUG-2020

Delete               subsurface Ocean Data Acquisition System ODAS/SADO with known  
depth of 9 metres  
(See Chart No. 1, L25)  
This notice affects Electronic Navigational Chart: CA176030

53°01'14.6"N 053°27'37.8"W

*DFO(6309223-02)*

Delete               subsurface Ocean Data Acquisition System ODAS/SADO with known  
depth of 9 metres  
(See Chart No. 1, L25)

50°24'40.0"N 049°11'45.3"W

*DFO(6309223-03)*

Delete               subsurface Ocean Data Acquisition System ODAS/SADO with known  
depth of 9 metres  
(See Chart No. 1, L25)  
This notice affects Electronic Navigational Chart: CA276515

44°58'04.0"N 048°44'00.9"W

*DFO(6309223-04)*

MONTHLY NOTICES TO MARINERS  
EASTERN EDITION 10/2020  
SECTION 2 – CHART CORRECTIONS

---

Delete subsurface Ocean Data Acquisition System ODAS/SADO with known depth of 9 metres  
(See Chart No. 1, L25)  
This notice affects Electronic Navigational Chart: CA276091 44°11'33.8"N 053°16'29.2"W  
DFO(6309223-05)

**4006 - Newfoundland and Labrador/Terre-Neuve-et-Labrador to Bermuda / aux Bermudes - New Edition - 08-AUG-2003 - NAD 1983**  
02-OCT-2020 LNM/D. 28-AUG-2020

Delete subsurface Ocean Data Acquisition System ODAS/SADO with known depth of 9 metres  
(See Chart No. 1, L25)  
This notice affects Electronic Navigational Chart: CA276091 44°11'33.8"N 053°16'29.2"W  
DFO(6309223-05)

**4013 - Halifax to / à Sydney - New Edition - 06-SEP-2002 - NAD 1983**  
23-OCT-2020 LNM/D. 21-AUG-2020

Amend FI 21s53ft17M to read FI 21s42ft17M against light  
(See Chart No. 1, P16)  
This notice affects Electronic Navigational Chart: CA179245, CA276204, CA376295  
(G2020176) LL(750) DFO(6309205-01) 45°45'56.0"N 060°06'49.0"W

**4015 - Sydney to / à Saint-Pierre - New Edition - 28-MAR-2003 - NAD 1983**  
23-OCT-2020 LNM/D. 07-AUG-2020

Amend FI 21s53ft17M to read FI 21s42ft17M against light  
(See Chart No. 1, P16)  
This notice affects Electronic Navigational Chart: CA179245, CA276204, CA376295  
(G2020176) LL(750) DFO(6309205-01) 45°45'57.0"N 060°06'46.0"W

**4021 - Pointe Amour à / to Cape Whittle et / and Cape George - New Edition - 01-NOV-2002 - NAD 1983**  
23-OCT-2020 LNM/D. 03-JUL-2020

Amend FI6s80ft5M to read FI 4s80ft6M against light  
(See Chart No. 1, P16)  
This notice affects Electronic Navigational Chart: CA276138, CA476708, CA576711  
(N2020077) LL(199) DFO(6309161-01) 49°28'54.0"N 058°08'04.0"W

**4023 - Northumberland Strait / Détroit de Northumberland - New Edition - 27-DEC-2002 - NAD 1983**  
02-OCT-2020 LNM/D. 21-AUG-2020

Reposition red and white fairway lighted spar buoy Mo(A)  
(See Chart No. 1, Qh)  
This notice affects Electronic Navigational Chart: CA276286 from 46°39'09.0"N 063°50'50.0"W  
to 46°39'28.0"N 063°51'23.0"W  
(G2020184) LL(1071.35) DFO(6309213-03)

**4024 - Baie des Chaleurs/Chaleur Bay aux/to Îles de la Madeleine - New Edition - 06-MAR-2015 - NAD 1983**  
16-OCT-2020 LNM/D. 29-MAY-2020

Delete red and white fairway lighted pillar BELL buoy Mo(A), marked TJ  
(See Chart No. 1, Qh)  
This notice affects Electronic Navigational Chart: CA279075, CA376187, CA476275, CA576269  
(G2020205) LL(1248) DFO(6309244-01) 47°42'37.9"N 064°38'59.3"W



MONTHLY NOTICES TO MARINERS  
EASTERN EDITION 10/2020  
SECTION 2 – CHART CORRECTIONS

---

Add red and white fairway lighted spar buoy Mo(A), marked TJ 47°42'42.2"N 064°39'16.8"W  
(See Chart No. 1, Qh)  
This notice affects Electronic Navigational Chart: CA279075, CA376187, CA476275, CA576269  
(G2020205) LL(1248) DFO(6309244-02)

**4045 - Sable Island Bank / Banc de l'Île de Sable to / au St. Pierre Bank / Banc de Saint-Pierre - New Edition - 10-OCT-2003 - NAD 1983**  
23-OCT-2020 LNM/D. 07-AUG-2020

Amend FI 21s16m17M to read FI 21s13m17M against light 45°45'59.0"N 060°06'46.4"W  
(See Chart No. 1, P16)  
This notice affects Electronic Navigational Chart: CA179245, CA276204, CA376295  
(G2020176) LL(750) DFO(6309205-01)

**4047 - St. Pierre Bank / Banc de Saint-Pierre to / au Whale Bank / Banc de la Baleine - New Edition - 09-OCT-1998 - NAD 1983**  
02-OCT-2020 LNM/D. 17-JUL-2020

Delete subsurface Ocean Data Acquisition System ODAS/SADO with known depth of 9 metres 44°11'33.8"N 053°16'29.2"W  
(See Chart No. 1, L25)  
This notice affects Electronic Navigational Chart: CA276091  
DFO(6309223-05)

**4049 - Grand Bank, Northern Portion / Grand Banc, Partie Nord to / à Flemish Pass / Passe Flamande - New Edition - 19-MAY-1995 - NAD 1983**  
30-OCT-2020 LNM/D. 14-AUG-2020

Add submerged production well, with depth over an artificial feature of 609 metres 47°51'18.0"N 046°59'06.0"W  
(See Chart No. 1, L20)  
This notice affects Electronic Navigational Chart: CA276101  
DFO(6309264-01)

**4227 - Country Harbour to / au Ship Harbour - New Chart - 24-MAY-1991 - NAD 1983**  
16-OCT-2020 LNM/D. 10-JUL-2020

Add light FI G against green port hand spar buoy, marked YA3 44°46'43.2"N 062°34'37.9"W  
(See Chart No. 1, Qg)  
This notice affects Electronic Navigational Chart: CA376083  
(F2020034) LL(590.01) DFO(6309237-01)

Add light FI R against red starboard hand spar buoy, marked YA4 44°46'42.7"N 062°33'50.0"W  
(See Chart No. 1, Qf)  
This notice affects Electronic Navigational Chart: CA376102  
(F2020035) DFO(6309238-01)

**4235 - Barren Island to / à Taylors Head - New Edition - 28-APR-2000 - NAD 1983**  
02-OCT-2020 LNM/D. 10-JUL-2020

Replace depth of 5.4 metres with depth of 3.9 metres 44°54'39.0"N 062°07'58.7"W  
(See Chart No. 1, I10)  
This notice affects Electronic Navigational Chart: CA376102, CA476104  
DFO(6309144-01)

Add drying height of 0.9 metres 44°55'52.2"N 062°08'24.6"W  
(See Chart No. 1, I15)  
This notice affects Electronic Navigational Chart: CA376102, CA476104  
DFO(6309144-02)

MONTHLY NOTICES TO MARINERS  
EASTERN EDITION 10/2020  
SECTION 2 – CHART CORRECTIONS

---

Add	depth of 2.4 metres (See Chart No. 1, I10) This notice affects Electronic Navigational Chart: CA376102	44°56'37.6"N 062°06'41.0"W  <i>DFO(6309144-03)</i>
Add	depth of 2.4 metres (See Chart No. 1, I10) This notice affects Electronic Navigational Chart: CA376102, CA476104	44°56'54.5"N 062°07'19.3"W  <i>DFO(6309144-05)</i>
16-OCT-2020		LNMD. 02-OCT-2020
Add	light FI R against red starboard hand spar buoy, marked YA4 (See Chart No. 1, Qf) This notice affects Electronic Navigational Chart: CA376102	44°46'42.3"N 062°33'47.5"W  <i>(F2020035) DFO(6309238-01)</i>
Add	red starboard hand lighted spar buoy FI R, marked YA6 (See Chart No. 1, Qf) This notice affects Electronic Navigational Chart: CA376102	44°47'28.0"N 062°34'01.3"W  <i>(F2020037) LL(590.04) DFO(6309240-01)</i>
<b>4235 - Ecum Secum - New Edition - 28-APR-2000 - NAD 1983</b>		
02-OCT-2020		LNMD. 10-JUL-2020
Replace	depth of 5.4 metres with depth of 3.9 metres (See Chart No. 1, I10) This notice affects Electronic Navigational Chart: CA376102, CA476104	44°54'39.0"N 062°07'58.7"W  <i>DFO(6309144-01)</i>
Add	drying height of 0.9 metres (See Chart No. 1, I15) This notice affects Electronic Navigational Chart: CA376102, CA476104	44°55'52.2"N 062°08'24.6"W  <i>DFO(6309144-02)</i>
Replace	depth of 5.6 metres with depth of 2.4 metres (See Chart No. 1, I10) This notice affects Electronic Navigational Chart: CA476104	44°56'37.6"N 062°06'41.0"W  <i>DFO(6309144-04)</i>
Add	depth of 2.4 metres (See Chart No. 1, I10) This notice affects Electronic Navigational Chart: CA376102, CA476104	44°56'54.5"N 062°07'19.3"W  <i>DFO(6309144-05)</i>
<b>4236 - Taylors Head to / à Shut-in Island - New Edition - 13-JUL-2001 - NAD 1983</b>		
16-OCT-2020		LNMD. 10-JUL-2020
Add	light FI G against green port hand spar buoy, marked YA3 (See Chart No. 1, Qg) This notice affects Electronic Navigational Chart: CA376083	44°46'42.3"N 062°34'41.9"W  <i>(F2020034) LL(590.01) DFO(6309237-01)</i>
Add	light FI R against red starboard hand spar buoy, marked YA4 (See Chart No. 1, Qf) This notice affects Electronic Navigational Chart: CA376102	44°46'42.4"N 062°33'48.4"W  <i>(F2020035) DFO(6309238-01)</i>

MONTHLY NOTICES TO MARINERS  
EASTERN EDITION 10/2020  
SECTION 2 – CHART CORRECTIONS

---

Add	green port hand lighted spar buoy Q G, marked YA5 (See Chart No. 1, Qg) This notice affects Electronic Navigational Chart: CA376083	44°47'24.3"N 062°34'29.4"W  (F2020036) LL(590.03) DFO(6309239-01)
Add	red starboard hand lighted spar buoy FI R, marked YA6 (See Chart No. 1, Qf) This notice affects Electronic Navigational Chart: CA376102	44°47'28.0"N 062°34'01.3"W  (F2020037) LL(590.04) DFO(6309240-01)
Add	green port hand lighted spar buoy FI G, marked YA7 (See Chart No. 1, Qg) This notice affects Electronic Navigational Chart: CA376083	44°48'36.8"N 062°35'56.3"W  (F2020038) LL(590.05) DFO(6309241-01)
Add	red starboard hand lighted spar buoy FI R, marked YA8 (See Chart No. 1, Qf) This notice affects Electronic Navigational Chart: CA376083	44°48'42.9"N 062°35'34.9"W  (F2020039) LL(590.06) DFO(6309242-01)

**4374 - Red Point to / à Guyon Island - New Edition - 08-NOV-2002 - NAD 1983**  
23-OCT-2020

LNM/D. 07-AUG-2020

Amend	FI 21s53ft17M to read FI 21s42ft17M against light (See Chart No. 1, P16) This notice affects Electronic Navigational Chart: CA179245, CA276204, CA376295	45°46'00.5"N 060°06'46.4"W  (G2020176) LL(750) DFO(6309205-01)
-------	--	--

**4375 - Guyon Island to / à Flint Island - New Edition - 11-OCT-2002 - NAD 1983**  
23-OCT-2020

LNM/D. 07-AUG-2020

Amend	FI 21s53ft17M to read FI 21s42ft17M against light (See Chart No. 1, P16) This notice affects Electronic Navigational Chart: CA179245, CA276204, CA376295	45°46'00.5"N 060°06'46.4"W  (G2020176) LL(750) DFO(6309205-01)
-------	--	--

30-OCT-2020

LNM/D. 23-OCT-2020

Delete	depth of 5 fathoms (See Chart No. 1, I10) This notice affects Electronic Navigational Chart: CA376303	45°56'47.0"N 059°47'47.6"W  DFO(6309194-02)
--------	---	---

Add	depth of 1 fathom, 1 foot (See Chart No. 1, I10) This notice affects Electronic Navigational Chart: CA376303	45°56'48.2"N 059°47'43.9"W  DFO(6309194-03)
-----	--	---

**4376 - Louisbourg Harbour - New Edition - 14-JUN-2002 - NAD 1983**  
30-OCT-2020

LNM/D. 12-MAY-2017

Add	depth of 6 feet (See Chart No. 1, I10)	45°52'19.7"N 059°59'29.9"W  DFO(6309195-01)
-----	---	---

Delete	depth of 10 feet (See Chart No. 1, I10)	45°52'32.9"N 059°59'23.1"W  DFO(6309195-02)
--------	--	---

MONTHLY NOTICES TO MARINERS  
EASTERN EDITION 10/2020  
SECTION 2 – CHART CORRECTIONS

---

Add	depth of 2 feet (See Chart No. 1, I10)	45°52'33.5"N 059°59'23.5"W <i>DFO(6309195-03)</i>
Add	depth of 5 feet (See Chart No. 1, I10)	45°52'51.7"N 059°59'04.3"W <i>DFO(6309195-04)</i>
Add	depth of 5 feet (See Chart No. 1, I10)	45°53'01.3"N 059°58'48.8"W <i>DFO(6309195-05)</i>
Add	depth of 4 feet (See Chart No. 1, I10)	45°53'07.2"N 059°58'39.8"W <i>DFO(6309195-06)</i>
Add	depth of 12 feet (See Chart No. 1, I10)	45°53'36.0"N 059°57'45.7"W <i>DFO(6309195-07)</i>
Delete	depth of 12 feet (See Chart No. 1, I10)	45°53'49.1"N 059°57'47.3"W <i>DFO(6309195-08)</i>
Add	depth of 7 feet (See Chart No. 1, I10)	45°53'48.9"N 059°57'48.0"W <i>DFO(6309195-09)</i>

**4377 - Main-à-Dieu Passage - New Edition - 06-NOV-1998 - NAD 1983**  
30-OCT-2020

LNMD. 12-FEB-2016

Add	depth of 9 feet (See Chart No. 1, I10)	45°56'31.3"N 059°47'20.3"W <i>DFO(6309194-01)</i>
Add	depth of 7 feet (See Chart No. 1, I10) This notice affects Electronic Navigational Chart: CA376303	45°56'48.2"N 059°47'43.9"W <i>DFO(6309194-03)</i>
Add	rock awash at chart datum (See Chart No. 1, K12)	45°59'06.3"N 059°49'28.7"W <i>DFO(6309194-04)</i>
Add	depth of 2 feet (See Chart No. 1, I10)	45°59'08.9"N 059°49'21.0"W <i>DFO(6309194-05)</i>
Add	depth of 6 feet (See Chart No. 1, I10)	45°59'11.1"N 059°49'11.3"W <i>DFO(6309194-06)</i>
Replace	depth of 17 feet with depth of 5 feet (See Chart No. 1, I10)	46°00'18.1"N 059°47'51.0"W <i>DFO(6309194-07)</i>
Add	depth of 9 feet (See Chart No. 1, I10)	45°56'35.0"N 059°47'21.2"W <i>DFO(6309194-08)</i>

MONTHLY NOTICES TO MARINERS  
EASTERN EDITION 10/2020  
SECTION 2 – CHART CORRECTIONS

---

**4405 - Victoria Harbour - New Edition - 21-FEB-2003 - NAD 1983**

30-OCT-2020

LNM/D. 21-AUG-2020

Amend            Q R to read FI R against red starboard hand lighted pillar buoy, marked  
NX12  
(See Chart No. 1, Qf)  
This notice affects Electronic Navigational Chart: CA476162  
46°12'15.7"N 063°29'20.1"W  
*(G2020173) LL(1009.2) DFO(6309202-01)*

**4405 - Victoria Wharf / Quai - New Edition - 21-FEB-2003 - NAD 1983**

30-OCT-2020

LNM/D. 21-AUG-2020

Reposition      green port hand lighted pillar buoy FI G, marked NX19/5  
(See Chart No. 1, Qg)  
This notice affects Electronic Navigational Chart: CA576163  
from 46°12'38.9"N 063°29'20.5"W  
to 46°12'32.1"N 063°29'22.2"W  
*(G2020180) LL(1011.18) DFO(6309209-01)*

Reposition      red starboard hand lighted pillar buoy FI R, marked NX20  
(See Chart No. 1, Qf)  
This notice affects Electronic Navigational Chart: CA576163  
from 46°12'34.6"N 063°29'20.5"W  
to 46°12'35.5"N 063°29'19.9"W  
*(G2020181) LL(1011.19) DFO(6309210-01)*

Add             green port hand lighted pillar buoy FI G, marked NX21  
(See Chart No. 1, Qg)  
This notice affects Electronic Navigational Chart: CA576163  
46°12'40.1"N 063°29'20.8"W  
*(G2020182) LL(1011.21) DFO(6309211-01)*

Add             red starboard hand lighted pillar buoy FI R, marked NX22  
(See Chart No. 1, Qf)  
This notice affects Electronic Navigational Chart: CA576163  
46°12'40.8"N 063°29'19.5"W  
*(G2020183) LL(1011.22) DFO(6309212-01)*

**4425 - Tracadie Bay - New Edition - 01-NOV-2002 - NAD 1983**

23-OCT-2020

LNM/D. 27-MAR-2020

Replace          depth of 5 feet with drying height of 1 foot  
(See Chart No. 1, I10, I15)  
46°21'51.6"N 062°59'24.0"W  
*DFO(6309145-01)*

Replace          depth of 6 feet with depth of 4 feet  
(See Chart No. 1, I10)  
46°22'48.0"N 063°01'27.7"W  
*DFO(6309145-02)*

Delete          depth of 10 feet  
(See Chart No. 1, I10)  
46°24'46.8"N 062°59'24.6"W  
*DFO(6309145-03)*

Add             depth of 7 feet  
(See Chart No. 1, I10)  
46°24'46.4"N 062°59'22.1"W  
*DFO(6309145-04)*

Delete          depth of 1 foot  
(See Chart No. 1, I10)  
46°24'45.7"N 063°02'24.5"W  
*DFO(6309145-05)*

Add             drying height of 4 feet  
(See Chart No. 1, I15)  
46°24'47.2"N 063°02'24.4"W  
*DFO(6309145-06)*

MONTHLY NOTICES TO MARINERS  
EASTERN EDITION 10/2020  
SECTION 2 – CHART CORRECTIONS

---

Delete depth of 9 feet 46°24'58.8"N 063°02'30.6"W  
(See Chart No. 1, I10) DFO(6309145-07)

Add depth of 2 feet 46°25'00.2"N 063°02'30.5"W  
(See Chart No. 1, I10) DFO(6309145-08)

Add depth of 3 feet 46°24'16.7"N 062°58'44.9"W  
(See Chart No. 1, I10) DFO(6309145-09)

**4426 - Rivière Ristigouche / Restigouche River - New Edition - 02-AUG-2002 - NAD 1983**  
30-OCT-2020

LNMD. 14-FEB-2020

Delete light FIG 48°00'47.6"N 066°39'53.7"W  
(See Chart No. 1, P1) (G2020177) LL(1352.2) DFO(6309206-01)

**4491 - Malpeque Bay - New Edition - 13-DEC-2002 - NAD 1983**  
02-OCT-2020

LNM/D. 31-JUL-2020

Delete red and white fairway lighted spherical buoy Mo(A), marked JS 46°39'08.2"N 063°50'51.4"W  
(See Chart No. 1, Qh) (G2020184) LL(1071.35) DFO(6309213-01)

Add red and white fairway lighted spar buoy Mo(A), marked JS 46°39'28.0"N 063°51'22.9"W  
(See Chart No. 1, Qh) (G2020184) LL(1071.35) DFO(6309213-02)

**4661 - Bear Head to / à Cow Head - New Edition - 04-JUL-2003 - NAD 1983**  
23-OCT-2020

LNMD. 09-JUN-2017

Amend FI 6s 80ft 5M to read FI 4s80ft6M against light 49°28'55.0"N 058°07'59.0"W  
(See Chart No. 1, P16) This notice affects Electronic Navigational Chart: CA276138, CA476708, CA576711  
(N2020077) LL(199) DFO(6309161-01)

Amend FI R to read LFI against light 49°30'17.4"N 057°54'49.0"W  
(See Chart No. 1, P16) This notice affects Electronic Navigational Chart: CA476708, CA576710  
(N2020079) LL(200) DFO(6309163-01)

**4661 - Trout River Bay - New Edition - 04-JUL-2003 - NAD 1983**  
23-OCT-2020

LNMD. 09-JUN-2017

Amend FI 6s 80ft 5M to read FI 4s80ft6M against light 49°28'55.0"N 058°07'59.0"W  
(See Chart No. 1, P16) This notice affects Electronic Navigational Chart: CA276138, CA476708, CA576711  
(N2020077) LL(199) DFO(6309161-01)

**4667 - Savage Cove to / à St Barbe Bay - New Edition - 30-MAR-2007 - NAD 1983**  
23-OCT-2020

LNM/D. 03-NOV-2017

Amend FI R 6s3m4M to read FI Y 6s3m4M against light 51°12'15.3"N 056°46'22.0"W  
(See Chart No. 1, P16) This notice affects Electronic Navigational Chart: CA476568, CA576569  
(N2020085) LL(216.3) DFO(6309169-01)

MONTHLY NOTICES TO MARINERS  
EASTERN EDITION 10/2020  
SECTION 2 – CHART CORRECTIONS

---

**4667 - St. Barbe Wharf and Approaches / Quai et Approches - New Edition - 30-MAR-2007 - NAD 1983**

23-OCT-2020

LNMD. 03-NOV-2017

Amend FI R 6s3m to read FI Y 6s3m against light 51°12'15.3"N 056°46'22.0"W  
(See Chart No. 1, P16)  
This notice affects Electronic Navigational Chart: CA476568, CA576569  
(N2020085) LL(216.3) DFO(6309169-01)

**4679 - Hawkes Bay, Port Saunders, Back Arm - New Edition - 29-NOV-2002 - NAD 1983**

02-OCT-2020

LNMD. 10-APR-2020

Amend FI G to read LFI G against light 50°42'27.7"N 057°20'55.2"W  
(See Chart No. 1, P16)  
(N2020081) LL(211.81) DFO(6309165-01)

Amend FI R to read FI Y against light 50°42'19.6"N 057°21'07.2"W  
(See Chart No. 1, P16)  
(N2020082) LL(211.82) DFO(6309166-01)

**4730 - Nain to / à Domino Point - New Edition - 31-MAY-2002 - Unknown**

09-OCT-2020

LNMD. 10-JUL-2020

Amend FI 4s25ft to read FI 3s25ft against light 55°57'30.0"N 060°23'43.0"W  
(See Chart No. 1, P16)  
This notice affects Electronic Navigational Chart: CA276652, CA376368  
(N2020086) LL(323.3) DFO(6309180-01)

**4821 - White Bay and / et Notre Dame Bay - New Chart - 23-APR-2004 - NAD 1983**

09-OCT-2020

LNMD. 07-AUG-2020

Amend FI 6s30m7M to read FI 4s30m7M against light 49°58'41.2"N 055°51'20.3"W  
(See Chart No. 1, P16)  
This notice affects Electronic Navigational Chart: CA376656  
(N2020087) LL(264) DFO(6309185-01)

**4822 - Cape St John to / à St Anthony - New Chart - 30-JUN-2006 - NAD 1983**

09-OCT-2020

LNMD. 10-APR-2020

Amend FI 6s30m7M to read FI 4s30m7M against light 49°58'41.1"N 055°51'20.5"W  
(See Chart No. 1, P16)  
This notice affects Electronic Navigational Chart: CA376656  
(N2020087) LL(264) DFO(6309185-01)

**4847 - Conception Bay - New Edition - 03-AUG-2001 - NAD 1983**

16-OCT-2020

LNMD. 26-OCT-2018

Add black, yellow and black East cardinal lighted spar buoy Q(3) 10s,  
marked CF 47°45'29.7"N 053°10'18.4"W  
(See Chart No. 1, Q130.3)  
This notice affects Electronic Navigational Chart: CA376120  
(N2020071) LL(476.2) DFO(6309157-01)

**4863 - Bacalhao Island to / à Black Island - New Edition - 30-NOV-2001 - NAD 1983**

23-OCT-2020

LNMD. 04-SEP-2020

Amend FIR to read FI Y against light 49°34'24.4"N 054°42'15.3"W  
(See Chart No. 1, P16)  
This notice affects Electronic Navigational Chart: CA476804  
(N2020074) LL(360.5) DFO(6309158-01)

MONTHLY NOTICES TO MARINERS  
EASTERN EDITION 10/2020  
SECTION 2 – CHART CORRECTIONS

---

Amend Iso R to read FI R against light 49°31'38.2"N 054°46'18.0"W  
(See Chart No. 1, P16)  
This notice affects Electronic Navigational Chart: CA476803  
(N2020076) LL(360.51) DFO(6309160-01)

**4881 - Gregory Island to Rocky Harbour - New Chart - 26-JUL-2019 - World Geodetic System 1984**  
23-OCT-2020

Amend FI 7M to read FI 6M against light 49°28'58.9"N 058°07'58.2"W  
(See Chart No. 1, P16)  
This notice affects Electronic Navigational Chart: CA276138, CA476708, CA576711  
(N2020077) LL(199) DFO(6309161-01)

Amend FI R to read LFI against light 49°30'17.3"N 057°54'44.9"W  
(See Chart No. 1, P16)  
This notice affects Electronic Navigational Chart: CA476708, CA576710  
(N2020079) LL(200) DFO(6309163-01)

**4881 - Norris Point - New Chart - 26-JUL-2019 - World Geodetic System 1984**  
23-OCT-2020

Amend FI R to read LFI against light 49°30'17.2"N 057°54'44.9"W  
(See Chart No. 1, P16)  
This notice affects Electronic Navigational Chart: CA476708, CA576710  
(N2020079) LL(200) DFO(6309163-01)

**4881 - Trout River - New Chart - 26-JUL-2019 - World Geodetic System 1984**  
23-OCT-2020

Amend FI 6s24m 7M to read FI 4s24m6M against light 49°28'58.7"N 058°07'58.3"W  
(See Chart No. 1, P16)  
This notice affects Electronic Navigational Chart: CA276138, CA476708, CA576711  
(N2020077) LL(199) DFO(6309161-01)

**4905 - Cape Tormentine à / to West Point - New Edition - 29-DEC-2000 - NAD 1983**  
09-OCT-2020

Add red and white fairway lighted spar buoy Mo(A), marked DH LNM/D. 07-AUG-2020  
(See Chart No. 1, Qh) 46°27'18.7"N 064°08'25.9"W  
This notice affects Electronic Navigational Chart: CA376076  
(G2020166) LL(1023) DFO(6309192-01)

Delete red starboard hand lighted spar buoy FI R, marked DH2 46°27'09.7"N 064°07'42.9"W  
(See Chart No. 1, Qf)  
This notice affects Electronic Navigational Chart: CA376076  
LL(1023.1) DFO(6309192-02)

**4906 - West Point à / to Baie de Tracadie - New Chart - 18-MAR-1988 - NAD 1983**  
02-OCT-2020

Delete green port hand lighted pillar buoy QG, marked Q3 LNM/D. 27-OCT-2017  
(See Chart No. 1, Qg) 46°42'55.1"N 064°44'46.5"W  
This notice affects Electronic Navigational Chart: CA376076, CA476131  
(G2020157) LL(1132) DFO(6309177-01)

Add green port hand lighted can buoy Q G, marked Q3 46°42'52.9"N 064°44'40.9"W  
(See Chart No. 1, Qg)  
This notice affects Electronic Navigational Chart: CA376076, CA476131  
(G2020157) LL(1132) DFO(6309177-02)



MONTHLY NOTICES TO MARINERS  
EASTERN EDITION 10/2020  
SECTION 2 – CHART CORRECTIONS

---

**4909 - Richibucto Harbour - New Chart - 17-JUN-1988 - NAD 1983**

02-OCT-2020

LNM/D. 07-AUG-2020

Reposition      red starboard hand lighted conical buoy Q R, marked Q10      from 46°42'27.7"N 064°45'15.7"W  
(See Chart No. 1, Qf)      to 46°42'25.1"N 064°45'10.0"W  
This notice affects Electronic Navigational Chart: CA476131  
(G2020154) LL(1133.6) DFO(6309174-01)

Delete            green port hand lighted pillar buoy QG, marked Q3      46°42'53.9"N 064°44'46.8"W  
(See Chart No. 1, Qg)  
This notice affects Electronic Navigational Chart: CA376076, CA476131  
(G2020157) LL(1132) DFO(6309177-01)

Add                green port hand lighted can buoy Q G, marked Q3      46°42'52.9"N 064°44'40.9"W  
(See Chart No. 1, Qg)  
This notice affects Electronic Navigational Chart: CA376076, CA476131  
(G2020157) LL(1132) DFO(6309177-02)

Reposition        green port hand lighted can buoy FI G, marked Q5      from 46°42'33.4"N 064°45'01.1"W  
(See Chart No. 1, Qg)      to 46°42'33.1"N 064°44'51.7"W  
This notice affects Electronic Navigational Chart: CA476131  
(G2020160) LL(1133.1) DFO(6309179-01)

**4911 - Entrée à / Entrance to Miramichi River - New Edition - 27-JAN-2006 - NAD 1983**

30-OCT-2020

LNM/D. 28-AUG-2020

Reposition        green port hand lighted pillar buoy FI G, marked MH11      from 47°11'30.3"N 065°01'56.5"W  
(See Chart No. 1, Qg)      to 47°11'36.4"N 065°02'15.0"W  
This notice affects Electronic Navigational Chart: CA376134, CA476133  
(G2020203) LL(1236) DFO(6309233-01)

**4911 - Continuation A - New Edition - 27-JAN-2006 - NAD 1983**

30-OCT-2020

LNM/D. 28-AUG-2020

Reposition        green port hand lighted pillar buoy FI G, marked MH11      from 47°11'30.1"N 065°01'56.6"W  
(See Chart No. 1, Qg)      to 47°11'36.4"N 065°02'15.0"W  
This notice affects Electronic Navigational Chart: CA376134, CA476133  
(G2020203) LL(1236) DFO(6309233-01)

**4913 - Caraquet Harbour, Baie de Shippegan and / et Miscou Harbour - New Chart - 07-AUG-1992 - NAD 1983**

16-OCT-2020

LNM/D. 11-SEP-2020

Delete            red and white fairway lighted pillar BELL buoy Mo(A), marked TJ      47°42'37.8"N 064°38'59.0"W  
(See Chart No. 1, Qh)  
This notice affects Electronic Navigational Chart: CA279075, CA376187, CA476275, CA576269  
(G2020205) LL(1248) DFO(6309244-01)

Add                red and white fairway lighted spar buoy Mo(A), marked TJ      47°42'42.2"N 064°39'16.8"W  
(See Chart No. 1, Qh)  
This notice affects Electronic Navigational Chart: CA279075, CA376187, CA476275, CA576269  
(G2020205) LL(1248) DFO(6309244-02)

Reposition        red starboard hand conical lighted buoy FI R, marked EC4      from 47°53'12.2"N 064°40'06.5"W  
(See Chart No. 1, Qf)      to 47°53'11.9"N 064°40'11.9"W  
This notice affects Electronic Navigational Chart: CA476275  
(G2020212) LL(1273.15) DFO(6309250-01)

MONTHLY NOTICES TO MARINERS  
EASTERN EDITION 10/2020  
SECTION 2 – CHART CORRECTIONS

---

Reposition      red starboard hand lighted spar buoy FI R, marked EM4      from 47°50'57.1"N 064°46'38.3"W  
(See Chart No. 1, Qf)      to 47°51'10.2"N 064°46'16.6"W  
This notice affects Electronic Navigational Chart: CA476275  
(G2020217) LL(1306.2) DFO(6309255-01)

**4920 - Shippegan Harbour - New Edition - 14-DEC-2018 - NAD 1983**

16-OCT-2020      LNMD. 11-SEP-2020

Delete      red and white fairway lighted pillar BELL buoy Mo(A), marked TJ      47°42'37.9"N 064°38'59.3"W  
(See Chart No. 1, Qh)  
This notice affects Electronic Navigational Chart: CA279075, CA376187, CA476275, CA576269  
(G2020205) LL(1248) DFO(6309244-01)

Add      red and white fairway lighted spar buoy Mo(A), marked TJ      47°42'42.2"N 064°39'16.8"W  
(See Chart No. 1, Qh)  
This notice affects Electronic Navigational Chart: CA279075, CA376187, CA476275, CA576269  
(G2020205) LL(1248) DFO(6309244-02)

Reposition      green port hand spar buoy, marked TJ39      from 47°43'53.9"N 064°40'14.0"W  
(See Chart No. 1, Qg)      to 47°43'51.6"N 064°40'11.5"W  
This notice affects Electronic Navigational Chart: CA576269  
(G2020211) DFO(6309249-01)

Reposition      red starboard hand spar buoy, marked TJ46      from 47°44'07.7"N 064°40'47.2"W  
(See Chart No. 1, Qf)      to 47°44'09.1"N 064°40'51.6"W  
This notice affects Electronic Navigational Chart: CA576269  
(G2020218) DFO(6309256-01)

Reposition      green port hand lighted spar buoy FI G, marked TJ47      from 47°44'08.3"N 064°40'52.8"W  
(See Chart No. 1, Qg)      to 47°44'09.7"N 064°40'56.5"W  
This notice affects Electronic Navigational Chart: CA576269  
(G2020219) LL(1261.5) DFO(6309257-01)

**5001 - Labrador Sea / Mer du Labrador - New Edition - 17-JAN-2003 - NAD 1983**

02-OCT-2020      LNMD. 28-DEC-2018

Delete      subsurface Ocean Data Acquisition System ODAS/SADO with known      53°01'14.6"N 053°27'37.8"W  
depth of 9 metres  
(See Chart No. 1, L25)  
This notice affects Electronic Navigational Chart: CA176030  
DFO(6309223-02)

**5024 - Nunaksaluk Island to / à Cape Kiglapait - New Chart - 27-JAN-2006 - NAD 1983**

09-OCT-2020      LNMD. 10-JUL-2020

Amend      FI 4s8m7M to read FI 3s8m7M against light      55°57'30.0"N 060°24'43.0"W  
(See Chart No. 1, P16)  
This notice affects Electronic Navigational Chart: CA276652, CA376368  
(N2020086) LL(323.3) DFO(6309180-01)

**5048 - Cape Harrigan to / aux Kidlit Islands - New Edition - 25-DEC-2015 - NAD 1983**

09-OCT-2020      LNMD. 10-JUL-2020

Amend      FI 4s8m7M to read FI 3s8m7M against light      55°57'28.8"N 060°24'43.3"W  
(See Chart No. 1, P16)  
This notice affects Electronic Navigational Chart: CA276652, CA376368  
(N2020086) LL(323.3) DFO(6309180-01)

MONTHLY NOTICES TO MARINERS  
EASTERN EDITION 10/2020  
SECTION 2 – CHART CORRECTIONS

---

**5134 - Approaches to / Approches à Cartwright: Black Island to / à Tumbledown Dick Island - New Edition - 13-SEP-2002 - NAD 1983**

30-OCT-2020 LNM/D. 15-JAN-2016

Add green port hand lighted spar buoy FI G, marked NC3 53°44'37.0"N 056°55'07.1"W  
(See Chart No. 1, Qg)  
This notice affects Electronic Navigational Chart: CA376355, CA476494  
(N2020093) LL(284.41) DFO(6309260-01)

Add red starboard hand lighted spar buoy FI R, marked NC2/2 53°44'26.8"N 056°56'21.6"W  
(See Chart No. 1, Qf)  
This notice affects Electronic Navigational Chart: CA376355, CA476494  
(N2020094) LL(284.42) DFO(6309261-01)

**5138 - Sandwich Bay - New Edition - 17-APR-1998 - NAD 1983**

30-OCT-2020 LNM/D. 15-JAN-2016

Add green port hand lighted spar buoy FI G, marked NC3 53°44'37.0"N 056°55'07.1"W  
(See Chart No. 1, Qg)  
This notice affects Electronic Navigational Chart: CA376355, CA476494  
(N2020093) LL(284.41) DFO(6309260-01)

Add red starboard hand lighted spar buoy FI R, marked NC2/2 53°44'26.8"N 056°56'21.6"W  
(See Chart No. 1, Qf)  
This notice affects Electronic Navigational Chart: CA376355, CA476494  
(N2020094) LL(284.42) DFO(6309261-01)

**8011 - Grand Bank / Grand Banc: Northern Portion / Partie Nord - New Edition - 30-AUG-2002 - NAD 1983**

02-OCT-2020 LNM/D. 08-MAR-2019

Delete subsurface Ocean Data Acquisition System ODAS/SADO with known 44°58'04.0"N 048°44'00.9"W  
depth of 9 metres  
(See Chart No. 1, L25)  
This notice affects Electronic Navigational Chart: CA276515  
DFO(6309223-04)

**8012 - Flemish Pass / Passe Flamande - New Edition - 11-OCT-2002 - NAD 1983**

30-OCT-2020 LNM/D. 14-AUG-2020

Add submerged production well, with depth over an artificial feature of 332 47°51'18.0"N 046°59'06.0"W  
fathoms  
(See Chart No. 1, L20)  
This notice affects Electronic Navigational Chart: CA276101  
DFO(6309264-01)

**8047 - Cod Island to / à Cape Harrison - New Edition - 23-MAY-2003 - Unknown**

02-OCT-2020 LNM/D. 10-JUL-2020

Delete subsurface Ocean Data Acquisition System ODAS/SADO with known 57°14'54.7"N 060°00'28.7"W  
depth of 9 metres  
(See Chart No. 1, L25)  
DFO(6309223-06)

09-OCT-2020 LNM/D. 02-OCT-2020

Amend FI 4s8m to read FI 3s8m against light 55°57'19.0"N 060°23'40.0"W  
(See Chart No. 1, P16)  
This notice affects Electronic Navigational Chart: CA276652, CA376368  
(N2020086) LL(323.3) DFO(6309180-01)

MONTHLY NOTICES TO MARINERS  
EASTERN EDITION 10/2020  
SECTION 2 – CHART CORRECTIONS

---

**8048 - Cape Harrison to / à St. Michael Bay - New Edition - 20-JUN-2003 - NAD 1983**  
02-OCT-2020

LNMD. 09-NOV-2018

Delete subsurface Ocean Data Acquisition System ODAS/SADO with known  
depth of 9 metres  
(See Chart No. 1, L25)  
This notice affects Electronic Navigational Chart: CA276113

55°13'40.4"N 054°11'24.4"W

*DFO(6309223-01)*

Delete subsurface Ocean Data Acquisition System ODAS/SADO with known  
depth of 9 metres  
(See Chart No. 1, L25)  
This notice affects Electronic Navigational Chart: CA176030

53°01'14.6"N 053°27'37.8"W

*DFO(6309223-02)*

MONTHLY NOTICES TO MARINERS  
EASTERN EDITION 10/2020  
SECTION 3 – RADIO AIDS TO MARINE NAVIGATION CORRECTIONS

---

NO CORRECTIONS FOR THIS SECTION.

SECTION 4 – SAILING DIRECTIONS AND SMALL CRAFT GUIDE CORRECTIONS

---

ATL 101 — Newfoundland, Northeast and East Coasts, Second Edition, 2013 —

Chapter 4 — Paragraph 199 (2013 Printed Version)

Delete: “; its outer end ... DLW2 (352.4)”

(N2020-05.7)

ATL 109 — Gulf of St. Lawrence (Northeast Portion), First Edition, 2006 —

Chapter 4 — Paragraph 161 (2006 Printed Version)

Delete: “To the NE of the church, ... approach to the Public wharf.”

Replace by: A small boat facility is located about 0.3 mile NE of the church. An L-shaped stone breakwater provides protection to the facility which consists of a concrete boat ramp and a floating wharf located on the NE side of the main stem of the breakwater. A **light** (183) is shown from a mast on the outer end of the stone breakwater. An outfall pipeline lies close SW of the stone breakwater. Starboard and port hand light **buoys** XG2, XG4 (178.13, 178.15) and XG1, XG3 (178.12, 178.14) mark the approach to the small boat facility.

(N2020-05.8)

Chapter 4 — Paragraph 161 (Print-on-Demand Version)

Delete: “A small facility ... small boat facility.”

Replace by: A small boat facility is located about 0.3 mile NE of the church. An L-shaped stone breakwater provides protection to the facility which consists of a concrete boat ramp and a floating wharf located on the NE side of the main stem of the breakwater. A **light** (183) is shown from a mast on the outer end of the stone breakwater. An outfall pipeline lies close SW of the stone breakwater. Starboard and port hand light **buoys** XG2, XG4 (178.13, 178.15) and XG1, XG3 (178.12, 178.14) mark the approach to the small boat facility.

(N2020-05.9)

CEN 308 — Rideau Canal and Ottawa River, First Edition, 2003 —

Chapter 6 — Delete paragraph 52 and adjacent pictograph.

(C2020-013.01)

MONTHLY NOTICES TO MARINERS  
EASTERN EDITION 10/2020

SECTION 5 – LIST OF LIGHTS, BUOYS AND FOG SIGNALS CORRECTIONS

The amendments are highlighted and deletions are crossed out. For general and region-specific information on the List of Lights, click on the following links: [Newfoundland and Labrador Coast](#), [Atlantic Coast](#), [Inland Waters](#) and [Pacific Coast](#).

No.	Name	Position ----- Latitude N. Longitude W.	Light Characteristics	Focal Height in m. above water	Nomi- nal Range	Description ----- Height in meters above ground	Remarks ----- Fog Signals
-----	------	--	--------------------------	--	-----------------------	--	---------------------------------

**NEWFOUNDLAND AND LABRADOR COAST**

**CAPE RACE TO ST. SHOTT'S (LL 1 – 7.4)**

1.91	Portugal Cove South light buoy MPS1	Portugal Cove South. 46 42 16.3 053 15 40.4	Fl G 4s	.....	.....	Green spar, marked "MPS1".	Seasonal.  Chart:4844 Edn 10/20 (N20-046)
------	---	--	---------	-------	-------	-------------------------------	--

**WEST COAST (LL 173 – 208.2)**

199 H0175	Trout River Light	49 28 58.7 058 07 58.4	Fl W 4s	24.3	6	Square skeleton tower, white and red rectangular daymark with red band at top and bottom. 4.3	Flash 1 s; eclipse 3 s. Year round.  Chart:4881 Edn 10/20 (N20-077)
200 H0168	Woody Point Light	Bonne Bay. 49 30 17.2 057 54 44.9	LFl W 6s	13.7	4	White pyramid tower with red top. 7.3	Flash 2 s; eclipse 4 s. Visible 180°. Seasonal.  Chart:4881 Edn 10/20 (N20-079)

**STRAIT OF BELLE ISLE (LL 211 – 234)**

211.81 H0153.5	Back Arm North Wharf Light	Port au Choix Harbour. 50 42 27.7 057 20 55.2	LFl G 6s	3.5	2	Cylindrical Mast. 2.6	Flash 2 s; eclipse 4 s. Seasonal.  Chart:4679 Edn 10/20 (N20-081)
211.82 H0153.6	Back Arm South cautionary light	Port au Choix Harbour. 50 42 19.5 057 21 07.0	Fl Y 4s	3.5	2	Cylindrical Mast. 2.6	Flash 1 s; eclipse 3 s. Seasonal.  Chart:4679 Edn 10/20 (N20-082)
216.3 H0146	St. Barbe Harbour Light	On seaward end of wharf. 51 12 15.3 056 46 22.0	Fl Y 6s	3.4	4	Mast. 2.6	Flash 1 s; eclipse 5 s. Year round.  Chart:4667 Edn 10/20 (N20-085)

**WHITE BAY (LL 235 – 269.3)**

264	Pacquet Harbour Entrance Light	Entrance to harbour. 49 58 41.1 055 51 20.6	Fl W 4s	30.2	7	Square skeleton tower, red and white rectangular daymark. 4.3	Flash 1 s; eclipse 3 s. Seasonal.  Chart:4821 Edn 10/20 (N20-087)
-----	-----------------------------------	--	---------	------	---	--	---

**NEWFOUNDLAND AND LABRADOR COAST (LL 269.99 – 325.23)**

284.41	Crab Head Shoal light buoy NC3	53 44 37.0 056 55 07.1	Fl G 4s	.....	.....	Green spar, marked "NC3".	Operates 24 h. Seasonal.  Chart:5138 Edn 10/20 (N20-093)
--------	-----------------------------------	---------------------------	---------	-------	-------	---------------------------	--

MONTHLY NOTICES TO MARINERS  
EASTERN EDITION 10/2020

SECTION 5 – LIST OF LIGHTS, BUOYS AND FOG SIGNALS CORRECTIONS

No.	Name	Position ----- Latitude N. Longitude W.	Light Characteristics	Focal Height in m. above water	Nomi- nal Range	Description ----- Height in meters above ground	Remarks ----- Fog Signals
-----	------	--	--------------------------	--	-----------------------	--	---------------------------------

284.42	Crab Island Shoals light buoy NC2/2	53 44 26.8 056 56 21.6	Fl R 4s	.....	.....	Red spar, marked "NC2/2".	Operates 24 h. Seasonal.  Chart:5138 Edn 10/20 (N20-094)
--------	--	---------------------------	---------	-------	-------	---------------------------	--

**NOTRE DAME BAY (LL 326 – 346.4, 354 – 395)**

335 H0677	Lushes Bight Wharf Light	On outer end of wharf. 49 35 34.2 055 43 07.3	Fl R 3s	3.0	4	Red Skeleton tower. 2.3	Flash every 0.5 s; eclipse 2.5 s. Year round.  Chart:4592 Edn 10/20 (N20-091)
--------------	-----------------------------	--	---------	-----	---	----------------------------	---

360.5 H0649	Hillgrade Wharf Light	49 34 24.4 054 42 15.3	Fl Y 4s	.....	2	Red cylindrical Mast. 2.6	Flash 1 s; eclipse 3 s. Seasonal.  Chart:4863 Edn 10/20 (N20-074)
----------------	--------------------------	---------------------------	---------	-------	---	------------------------------	---

360.51 H0651.45	Virgin Arm Wharf Light	49 31 38.2 054 46 18.0	Fl R 4s	.....	2	Cylindrical Mast. 2.6	Flash 1 s; eclipse 3 s. Seasonal.  Chart:4863 Edn 10/20 (N20-076)
--------------------	---------------------------	---------------------------	---------	-------	---	--------------------------	---

**CONCEPTION BAY (LL 471.7 – 498.5)**

476.2	Freshwater Cove East cardinal light buoy CF	47 45 29.7 053 10 18.4	Q(3) W 10s	.....	.....	Black-yellow-black spar, marked "CF".	Seasonal.  Chart:4847 Edn 10/20 (N20-071)
-------	---	---------------------------	------------	-------	-------	--	--

**ATLANTIC COAST**

**NOVA SCOTIA, SOUTHEAST COAST (LL 327 – 684.02)**

590.01	Maloney Shoal light buoy YA3	44 46 42.1 062 34 41.8	Fl G 4s	.....	.....	Green spar, marked "YA3".	Year round.  Chart:4236 Edn 10/20 (F20-034)
--------	---------------------------------	---------------------------	---------	-------	-------	---------------------------	--

590.02	Mad Moll Reef light buoy YA4	44 46 42.3 062 33 48.6	Fl R 4s	.....	.....	Red spar, marked "YA4".	Year round.  Chart:4236 Edn 10/20 (F20-035)
--------	---------------------------------	---------------------------	---------	-------	-------	-------------------------	--

590.03	Neverfail Shoal light buoy YA5	44 47 24.3 062 34 29.4	Q G 1s	.....	.....	Green spar, marked "YA5".	Operates 24 h. Year round.  Chart:4236 Edn 10/20 (F20-036)
--------	-----------------------------------	---------------------------	--------	-------	-------	---------------------------	--

590.04	Spry Bay light buoy YA6	44 47 28.0 062 34 01.3	Fl R 4s	.....	.....	Red spar, marked "YA6".	Operates 24 h. Year round.  Chart:4236 Edn 10/20 (F20-037)
--------	----------------------------	---------------------------	---------	-------	-------	-------------------------	--

590.05	Ram Rock light buoy YA7	44 48 36.8 062 35 56.3	Fl G 4s	.....	.....	Green spar, marked "YA7".	Operates 24 h. Year round.  Chart:4236 Edn 10/20 (F20-038)
--------	----------------------------	---------------------------	---------	-------	-------	---------------------------	--



MONTHLY NOTICES TO MARINERS  
EASTERN EDITION 10/2020

SECTION 5 – LIST OF LIGHTS, BUOYS AND FOG SIGNALS CORRECTIONS

No.	Name	Position ----- Latitude N. Longitude W.	Light Characteristics	Focal Height in m. above water	Nomi- nal Range	Description ----- Height in meters above ground	Remarks ----- Fog Signals
590.06	Bald Rock light buoy YA8	44 48 42.9 062 35 34.9	Fl R 4s	.....	.....	Red spar, marked "YA8".	Operates 24 h. Year round.  Chart:4236 Edn 10/20 (F20-039)
<b>GULF OF ST. LAWRENCE (LL 883.2 – 940.3, 1169.1 – 1426, 1477.5 – 1584)</b>							
1236	Portage Gully light buoy MH11	E. of N. point, Portage Island. 47 11 36.4 065 02 15.0	Fl G 4s	.....	.....	Green, marked "MH11".	Seasonal.  Chart:4911 Edn 10/20 (G20-203)
1248	Shippagan Fairway light buoy TJ	S. entrance to Shippagan Gully. 47 42 42.2 064 39 16.8	Mo(A) W 6s	.....	.....	Red and white vertical striped spar, marked "TJ".	Buoy may be repositioned due to shifting channel. Seasonal.  Chart:4920 Edn 10/20 (G20-205)
1248.13	Shippagan South Gully light buoy TJ6	47 42 51.5 064 39 42.5	Fl R 4s	.....	.....	Red spar, marked "TJ6".	Buoy may be repositioned due to shifting channel. Seasonal.  Chart:N/A Edn 10/20 (G20-207)
1248.133	Shippagan South Gully light buoy TJ7	47 42 49.9 064 39 45.4	Fl G 4s	.....	.....	Green spar, marked "TJ7".	Buoy may be repositioned due to shifting channel. Operates 24 h. Seasonal.  Chart:N/A Edn 10/20 (G20-206)
1248.51	Shippagan Gully light buoy TJ9	47 42 52.6 064 39 51.1	Fl G 4s	.....	.....	Green spar, marked "TJ9".	Operates 24 h. Seasonal.  Chart:N/A Edn 10/20 (G20-209)
1248.71	Shippagan Gully light buoy TJ12	47 43 08.1 064 40 00.4	Fl R 4s	.....	.....	Red, marked "TJ12".	Seasonal.  Chart:N/A Edn 10/20 (G20-210)
1261.5	Shippagan South Gully light buoy TJ47	47 44 09.7 064 40 56.5	Fl G 4s	.....	.....	Green spar, marked "TJ47".	Buoy may be repositioned due to shifting channel. Seasonal (in place year round).  Chart:4920 Edn 10/20 (G20-219)
1273.15	Shippagan Flat light buoy EC4	Miscou Harbour. 47 53 11.9 064 40 11.9	Fl R 4s	.....	.....	Red, marked "EC4".	Seasonal.  Chart:4913 Edn 10/20 (G20-212)
1289	Shippagan Channel light buoy EG21	47 46 07.4 064 43 00.0	Fl G 4s	.....	.....	Green spar, marked "EG21".	Buoy may be repositioned due to shifting channel. Seasonal (in place year round).  Chart:4913 Edn 10/20 (G20-213)
1352.2	Campbellton Wharf						Delete from list.  Chart:4426 Edn 10/20 (G20-177)

MONTHLY NOTICES TO MARINERS  
EASTERN EDITION 10/2020

SECTION 5 – LIST OF LIGHTS, BUOYS AND FOG SIGNALS CORRECTIONS

No.	Name	Position ----- Latitude N. Longitude W.	Light Characteristics	Focal Height in m. above water	Nomi- nal Range	Description ----- Height in meters above ground	Remarks ----- Fog Signals
1539.15	Île Dufour fairway light and bell buoy STAUG	Saint-Augustin. 51 10 32.5 058 18 06.0	Mo(A) W 6s	.....	.....	Red and white vertical stripes, marked "STAUG".	Seasonal.  Chart:4472 Edn 10/20
<b>PRINCE EDWARD ISLAND (LL 942 – 1084.7)</b>							
1009.2	Victoria Harbour light buoy NX12	46 12 15.5 063 29 20.3	Fl R 4s	.....	.....	Red, marked "NX12".	Seasonal.  Chart:4405 Edn 10/20 (G20-173)
1011.14	Victoria Harbour light buoy NX17	46 12 20.4 063 29 21.7	Fl G 4s	.....	.....	Green, marked "NX17".	Seasonal.  Chart:N/A Edn 10/20 (G20-174)
1011.145	Victoria Harbour light buoy NX17/3	46 12 22.5 063 29 21.7	Q G 1s	.....	.....	Green, marked "NX17/3".	Seasonal.  Chart:N/A Edn 10/20 (G20-172)
1011.15	Victoria Harbour light buoy NX18	46 12 26.0 063 29 22.7	Q R 1s	.....	.....	Red, marked "NX18".	Seasonal.  Chart:N/A Edn 10/20 (G20-175)
1011.155	Victoria Harbour light buoy NX18/2	46 12 28.4 063 29 22.0	Fl R 4s	.....	.....	Red, marked "NX18/2".	Seasonal.  Chart:N/A Edn 10/20 (G20-178)
1011.175	Victoria Harbour light buoy NX19	46 12 25.9 063 29 24.2	Q G 1s	.....	.....	Green, marked "NX19".	Seasonal.  Chart:N/A Edn 10/20 (G20-179)
1011.18	Victoria Harbour light buoy NX19/5	46 12 32.1 063 29 22.2	Fl G 4s	.....	.....	Green, marked "NX19/5".	Seasonal.  Chart:4405 Edn 10/20 (G20-180)
1011.19	Victoria Harbour light buoy NX20	46 12 35.5 063 29 19.9	Fl R 4s	.....	.....	Red, marked "NX20".	Seasonal.  Chart:4405 Edn 10/20 (G20-181)
1011.21	Victoria Harbour light buoy NX21	46 12 40.1 063 29 20.8	Fl G 4s	.....	.....	Green, marked "NX21".	Seasonal.  Chart:4405 Edn 10/20 (G20-182)
1011.22	Victoria Harbour light buoy NX22	46 12 40.8 063 29 19.5	Fl R 4s	.....	.....	Red, marked "NX22".	Seasonal.  Chart:4405 Edn 10/20 (G20-183)
1021 H1050	Summerside range	Near outer end of wharf. 46 23 14.4 063 47 21.2	F G	.....	10.8	14 Square skeleton tower, white daymark with red vertical stripe. 9.4	Visible in line of range. Operates 24 h. Year round.
1022 H1050.1		072°04' 1436.3 m from front.	F G	.....	24.8	16 White pyramid tower with red top, red vertical stripe. 20.1	Visible in line of range. Operates 24 h. Year round.
							Chart:4459 Edn 10/20 (G20-215, 216)

MONTHLY NOTICES TO MARINERS  
EASTERN EDITION 10/2020

SECTION 5 – LIST OF LIGHTS, BUOYS AND FOG SIGNALS CORRECTIONS

No.	Name	Position ----- Latitude N. Longitude W.	Light Characteristics	Focal Height in m. above water	Nomi- nal Range	Description ----- Height in meters above ground	Remarks ----- Fog Signals
1023	Abrams Village fairway light buoy DH	46 27 18.7 064 08 25.9	Mo(A) W 6s	.....	.....	Red and white vertical striped spar, marked "DH".	Seasonal.  Chart:4905 Edn 10/20 (G20-166)
1023.1	Abrams Village light buoy DH2	46 27 09.1 064 07 42.8	Fl R 4s	.....	.....	Red spar, marked "DH2".	Seasonal.  Chart:N/A Edn 10/20 (G20-169)
1023.2	Abrams Village light buoy DH6	46 27 06.9 064 07 25.4	Fl R 4s	.....	.....	Red spar, marked "DH6".	Seasonal.  Chart:N/A Edn 10/20 (G20-170)
1023.3	Abrams Village light buoy DH8	Egmont Bay South. 46 27 05.6 064 07 15.1	Q R 1s	.....	.....	Red spar, marked "DH8".	Seasonal.  Chart:N/A Edn 10/20 (G20-168)
1023.4	Abrams Village light buoy DH9	46 27 04.9 064 07 12.5	Fl G 4s	.....	.....	Green spar, marked "DH9".	Seasonal.  Chart:N/A Edn 10/20 (G20-208)
1023.5	Abrams Village light buoy DH10	46 27 04.0 064 07 12.1	Fl R 4s	.....	.....	Red spar, marked "DH10".	Seasonal.  Chart:N/A Edn 10/20 (G20-171)
1023.52	Abrams Village light buoy DH16	Egmont Bay South. 46 26 50.6 064 06 58.6	Q R 1s	.....	.....	Red spar, marked "DH16".	Seasonal.  Chart:N/A Edn 10/20 (G20-221)
1023.6	Abrams Village light buoy DH14						Delete from list.  Chart:4905 Edn 10/20 (G20-220)
1023.7	Abrams Village light buoy DH5	Egmont Bay South. 46 27 08.8 064 07 28.4	Fl G 4s	.....	.....	Green spar, marked "DH5".	Seasonal.  Chart:N/A Edn 10/20 (G20-165)
1071.35	Conway Inlet Fairway light buoy JS	NW. of inlet. 46 39 28.0 063 51 22.9	Mo(A) W 6s	.....	.....	Red and white vertical striped spar, marked "JS".	Buoy may be repositioned due to shifting channel. Seasonal.  Chart:4491 Edn 10/20 (G20-184)
1071.39	Conway Inlet light buoy JS2	46 39 21.8 063 51 30.4	Fl R 4s	.....	.....	Red spar, marked "JS2".	Buoy may be repositioned due to shifting channel. Seasonal.  Chart:N/A Edn 10/20 (G20-185)
1071.41	Conway Inlet light buoy JS3	46 39 20.4 063 51 27.2	Q G 1s	.....	.....	Green spar, marked "JS3".	Buoy may be repositioned due to shifting channel. Seasonal.  Chart:N/A Edn 10/20 (G20-186)

MONTHLY NOTICES TO MARINERS  
EASTERN EDITION 10/2020

SECTION 5 – LIST OF LIGHTS, BUOYS AND FOG SIGNALS CORRECTIONS

No.	Name	Position ----- Latitude N. Longitude W.	Light Characteristics	Focal Height in m. above water	Nomi- nal Range	Description ----- Height in meters above ground	Remarks ----- Fog Signals
1071.42	Conway Inlet light buoy JS4	46 39 14.3 063 51 37.4	Fl R 4s	.....	.....	Red spar, marked "JS4".	Buoy may be repositioned due to shifting channel. Seasonal.  Chart: N/A Edn 10/20 (G20-187)
1071.45	Conway Inlet light buoy JS5	46 39 14.1 063 51 35.5	Fl G 4s	.....	.....	Green spar, marked "JS5".	Buoy may be repositioned due to shifting channel. Seasonal.  Chart: N/A Edn 10/20 (G20-188)
1071.5	Conway Inlet light buoy JS7	46 39 06.4 063 51 43.0	Fl G 4s	.....	.....	Green spar, marked "JS7".	Buoy may be repositioned due to shifting channel. Seasonal.  Chart: N/A Edn 10/20 (G20-189)
1071.52	Conway Inlet light buoy JS8	46 39 01.0 063 51 52.5	Fl R 4s	.....	.....	Red spar, marked "JS8".	Buoy may be repositioned due to shifting channel. Seasonal.  Chart: N/A Edn 10/20 (G20-190)
1071.89	Conway Inlet light buoy JS12	46 38 58.7 063 52 03.1	Fl R 4s	.....	.....	Red, marked "JS12".	Buoy may be repositioned due to shifting channel. Seasonal.  Chart: N/A Edn 10/20 (G20-193)
1071.9	Conway Inlet light buoy JS13	46 39 14.2 063 52 28.0	Fl G 4s	.....	.....	Green spar, marked "JS13".	Buoy may be repositioned due to shifting channel. Seasonal.  Chart: N/A Edn 10/20 (G20-191)
1071.95	Conway Inlet light buoy JS14	46 39 14.8 063 52 26.6	Q R 1s	.....	.....	Red spar, marked "JS14".	Buoy may be repositioned due to shifting channel. Seasonal.  Chart: N/A Edn 10/20 (G20-192)
1071.96	Conway Inlet light buoy JS21	46 39 24.6 063 52 46.3	Q G 1s	.....	.....	Green, marked "JS21".	Buoy may be repositioned due to shifting channel. Seasonal.  Chart: N/A Edn 10/20 (G20-194)
1071.961	Conway Inlet light buoy JS22	46 39 25.2 063 52 45.2	Q R 1s	.....	.....	Red, marked "JS22".	Buoy may be repositioned due to shifting channel. Seasonal.  Chart: N/A Edn 10/20 (G20-195)
1071.962	Conway Inlet light buoy JS23	46 39 32.8 063 52 54.6	Q G 1s	.....	.....	Green, marked "JS23".	Buoy may be repositioned due to shifting channel. Seasonal.  Chart: N/A Edn 10/20 (G20-196)

MONTHLY NOTICES TO MARINERS  
EASTERN EDITION 10/2020

SECTION 5 – LIST OF LIGHTS, BUOYS AND FOG SIGNALS CORRECTIONS

No.	Name	Position ----- Latitude N. Longitude W.	Light Characteristics	Focal Height in m. above water	Nomi- nal Range	Description ----- Height in meters above ground	Remarks ----- Fog Signals
1071.963	Conway Inlet light buoy JS24	46 39 33.2 063 52 53.6	Fl R 4s	.....	.....	Red, marked "JS24".	Buoy may be repositioned due to shifting channel. Seasonal.  Chart: N/A Edn 10/20 (G20-197)
1071.977	Conway Inlet light buoy JS27	46 39 43.6 063 53 05.3	Q G 1s	.....	.....	Green, marked "JS27".	Buoy may be repositioned due to shifting channel. Seasonal.  Chart: N/A Edn 10/20 (G20-198)
1071.98	Conway Inlet light buoy JS32	46 39 38.5 063 53 29.4	Q R 1s	.....	.....	Red, marked "JS32".	Buoy may be repositioned due to shifting channel. Seasonal.  Chart: N/A Edn 10/20 (G20-199)
1072.4	Conway Inlet light buoy JS42	46 39 21.5 063 54 05.2	Fl R 4s	.....	.....	Red, marked "JS42".	Buoy may be repositioned due to shifting channel. Seasonal.  Chart: N/A Edn 10/20 (G20-200)
1072.5	Conway Inlet light buoy JS43	46 39 20.5 063 54 26.6	Q G 1s	.....	.....	Green, marked "JS43".	Buoy may be repositioned due to shifting channel. Seasonal.  Chart: N/A Edn 10/20 (G20-201)
1072.6	Conway Inlet light buoy JS44	46 39 21.7 063 54 26.4	Fl R 4s	.....	.....	Red, marked "JS44".	Buoy may be repositioned due to shifting channel. Seasonal.  Chart: N/A Edn 10/20 (G20-202)
<b>NORTHUMBERLAND STRAIT (LL 1085 – 1165.9)</b>							
1113.01 1115.1	Cocagne Harbour Fairway light buoy XT	46 23 19.7 064 32 38.5	Mo(A) W 6s	.....	.....	Red and white vertical stripes, marked "XT".	Seasonal.  Chart: 4909 Edn 10/20 (G20-222)
1132	Richibucto Gully Entrance light buoy Q3	46 42 52.9 064 44 40.9	Q G 1s	.....	.....	Green, marked "Q3".	Buoy may be repositioned due to shifting channel. Seasonal.  Chart: 4909 Edn 10/20 (G20-157)
1133.1	Richibucto light buoy Q5	46 42 33.1 064 44 51.7	Fl G 4s	.....	.....	Green, marked "Q5".	Buoy may be repositioned due to shifting channel. Seasonal.  Chart: 4909 Edn 10/20 (G20-160)
1154.1	Kouchibouguacis River light buoy XX9	46 46 01.9 064 50 59.7	Fl G 4s	.....	.....	Green, marked "XX9".	Buoy may be repositioned due to shifting channel. Seasonal.  Chart: N/A Edn 10/20 (G20-158)

MONTHLY NOTICES TO MARINERS  
EASTERN EDITION 10/2020

SECTION 5 – LIST OF LIGHTS, BUOYS AND FOG SIGNALS CORRECTIONS

No.	Name	Position ----- Latitude N. Longitude W.	Light Characteristics	Focal Height in m. above water	Nomi- nal Range	Description ----- Height in meters above ground	Remarks ----- Fog Signals
1154.2	Kouchibouguais River light buoy XX19	46 45 59.8 064 51 36.9	Q G 1s	.....	.....	Green, marked "XX19".	Buoy may be repositioned due to shifting channel. Seasonal.

Chart:N/A  
Edn 10/20 (G20-161)

**ST. LAWRENCE RIVER (LL 1584.5 – 1772, 1823.8 – 2185.7, 2273 – 2365.95)**

1763.15	Batture de l'île Ronde light buoy HV3	L'Isle-Verte. 48 02 0.00 069 21 19.1	Fl G 4s	.....	.....	Green, marked "HV3".	Seasonal.  Chart:1320 Edn 10/20 (Q20-154)
1763.2	Batture de l'île Ronde light buoy HV4	L'Isle-Verte. 48 01 56.1 069 21 26.6	Fl R 4s	.....	.....	Red, marked "HV4".	Seasonal.  Chart:1320 Edn 10/20 (Q20-155)
1763.25	Batture de l'île Ronde light buoy HV5	L'Isle-Verte. 48 01 52.2 069 21 10.0	Fl G 4s	.....	.....	Green, marked "HV5".	Seasonal.  Chart:1320 Edn 10/20 (Q20-156)
1763.35	Anse Verte light buoy HV7	L'Isle-Verte. 48 01 45.3 069 21 3.00	Fl G 4s	.....	.....	Green, marked "HV7".	Seasonal.  Chart:1320 Edn 10/20 (Q20-157)
1763.45	Anse Verte light buoy HV9	L'Isle-Verte. 48 01 35.8 069 20 57.7	Fl G 4s	.....	.....	Green, marked "HV9".	Seasonal.  Chart:1320 Edn 10/20 (Q20-158)
1763.6	Anse Verte light buoy HV12	L'Isle-Verte. 48 01 28.4 069 20 59.5	Fl R 4s	.....	.....	Red, marked "HV12".	Seasonal.  Chart:1320 Edn 10/20 (Q20-159)

**INLAND WATERS**

**ST. JOSEPH CHANNEL (LL 1046 – 1059)**

1050	McKay Island	On eastern end of island. 46 16 55.8 083 46 50.4	Iso W 4s	12.7	5	Skeleton tower, red and white slatted daymark. 9.8	Seasonal (in place year round).  Chart:2250 Edn 10/20 (D20-024)
1051	Bruce Mines Wharf	On outer end of wharf in village. 46 17 49.9 083 47 23.6	Fl R 4s	8.3	8	Cylindrical mast, red and white rectangular daymark with red triangle in centre. 6.8	Privately maintained by the Corporation of the Town of Bruce Mines. Seasonal (in place year round).  Chart:2250 Edn 10/20 (D20-025)
1053	Plummer Bank light buoy K8	Off bank. 46 17 46.4 083 54 38.3	Fl R 4s	.....	.....	Red spar, marked "K8".	(Winter spar.) Seasonal (in place year round).  Chart:2250 Edn 10/20 (D20-022)
1059	Cambria Bank light buoy K33	N. of bank. 46 19 27.3 084 06 11.0	Fl G 4s	.....	.....	Green spar, marked "K33".	Seasonal (in place year round).  Chart:2250 Edn 10/20 (D20-023)

**CANADIAN COAST GUARD – MARINE INFORMATION REPORT AND SUGGESTION SHEET**

Name of Ship or Sender: ..... Date: .....

Address of Sender: .....  
Street # Street Name

Town / City: ..... Prov / State: ..... Postal Code / Zip Code: .....

Tel / Fax / E-mail address of sender: .....

Observation Date: ..... Time (UTC): .....

Geographical Position: .....

Coordinate Position: Lat: ..... Long: .....

Position Method:  DGPS  GPS with WAAS  GPS  Radar  Other

Horizontal Datum Used:  WGS 84  NAD 27  Other

Estimated Position Accuracy: .....

Chart #: ..... Datum:  NAD 27  NAD 83

Chart Edition: ..... Last Correction applied: .....

Publications affected (Quote edition and page number): .....

\*Full details (Attach additional sheets as necessary): .....

Mariners are requested to notify the responsible authorities when new or suspected dangers to navigation are discovered, changes are observed in aids to navigation, or corrections to publications are seen to be necessary.

*In the case of new or suspected dangers to navigation, it is important that all details be given in order to aid with future investigations. Items of interest include heights, depths, physical description, type of bottom and equipment method used to position the item. It is helpful to mark details on the chart, which will be promptly replaced by the Canadian Hydrographic Service.*

Reports should be made to the nearest Marine Communications and Traffic Services Centre (MCTS) and should be confirmed in writing to:

Leader, Notices to Mariners  
Canadian Coast Guard  
Department of Fisheries and Oceans  
Montreal, QC H2Y 2E7  
[Notmar.XNCR@dfo-mpo.gc.ca](mailto:Notmar.XNCR@dfo-mpo.gc.ca)

In the case of information concerning aids to navigation or the  
List of Lights, Buoys and Fog Signals book.

**OR**

Director General, Canadian Hydrographic Service &  
Oceanographic Services  
Department of Fisheries and Oceans  
Ottawa, ON K1A 0E6  
[CHSINFO@dfo-mpo.gc.ca](mailto:CHSINFO@dfo-mpo.gc.ca)

In the case of new or suspected dangers to navigation or  
where corrections to "Sailing Directions" appear to be  
necessary.

For general questions on Canadian Coast Guard programs or services, please send an e-mail to:  
[info@dfo-mpo.gc.ca](mailto:info@dfo-mpo.gc.ca)