



Fisheries and Oceans  
Canada

Pêches et Océans  
Canada

Canadian  
Coast Guard

Garde côtière  
canadienne

# Notices to Mariners

**Edition No. 08/2021**  
August 27, 2021



Safety First, Service Always

## Monthly Western Edition

Canada 

Notices to Mariners – Monthly Western Edition  
Edition No. 08/2021

Aussi disponible en français :  
Avis aux navigateurs – Édition mensuelle de l'Ouest  
Édition n° 08/2021

**Published under the Authority of:**

Canadian Coast Guard Programs  
Aids to Navigation and Waterways  
Fisheries and Oceans Canada  
Montreal, QC H2Y 2E7

For more information, contact [Notmar.XNCR@dfo-mpo.gc.ca](mailto:Notmar.XNCR@dfo-mpo.gc.ca).

© Her Majesty the Queen in Right of Canada,  
as represented by the Minister of Fisheries, Oceans  
and the Canadian Coast Guard, 2021.

Cat. No. Fs152-6E-PDF (Electronic PDF, English)  
ISSN 1719-7708

Cat. No. Fs152-6F-PDF (Electronic PDF, French)  
ISSN 1719-7716

A web version is available here:

<https://www.notmar.gc.ca/monthly-mensuel-en.php> (English)

<https://www.notmar.gc.ca/monthly-mensuel-fr.php> (French)

## Explanatory Notes – Notices to Mariners (NOTMAR)

**Geographical positions** refer directly to the graduations of the largest scale Canadian Hydrographic Service chart (unless otherwise indicated).

**Bearings** refer to the true compass and are measured clockwise from 000° (North) clockwise to 359°; those relating to lights are from seaward.

**Visibility** of lights is that in clear weather.

**Depths** - The units used for soundings (metres, fathoms or feet) are stated in the title of each chart.

**Elevations** are normally given above Higher High Water, Large Tide (unless otherwise indicated).

**Distances** may be calculated as follows:

- 1 nautical mile = 1,852 metres (6,076.1 feet)
- 1 statute mile = 1,609.3 metres (5,280 feet)
- 1 metre = 3.28 feet

### Temporary and Preliminary Notices to Mariners – Section 1A of *Notices to Mariners*

These notices are indicated by a (T) or a (P), respectively. Please note that nautical charts are not amended by the Canadian Hydrographic Service for temporary (T) and preliminary (P) notices. It is recommended that mariners chart these corrections in pencil. For the list of charts affected by (T) & (P) notices, please refer to the current [Notices to Mariners - Monthly Summary of Temporary and Preliminary Notices](#) publication.

### Suggestions and Corrections Form

This form is specifically for suggestions and corrections to Notices to Mariners publications. It is available [online](#) and also in [fillable PDF format](#) included with the monthly publication ZIP file.

To report chart discrepancies and/or corrections to the *Sailing Directions* booklets: Fill out the [Marine Information Reporting Form](#) and/or email [chsinfo@dfm-mpo.gc.ca](mailto:chsinfo@dfm-mpo.gc.ca).

To report emergencies or navigational hazards: [Contact your nearest MCTS centre](#)

- VHF channel 16 (156.8 MHz)
- MF/HF frequency 2182 kHz/4125 kHz (where available)
- \*16 on a cellphone (where available)

### NOTMAR Website – Monthly Editions, Chart Corrections and Chart Patches

The NOTMAR website allows users to access the [monthly publications](#), [chart corrections](#), and [chart patches](#).

Users can subscribe for free to the [email notification service](#) to receive notifications when charts of interest are updated, including their patches, as well as when a new Monthly Edition of *Notices to Mariners* is published.

In addition, the monthly publication and related files to download, such as chart patches and *Sailing Directions* diagrams, can be obtained all together through the download of a single ZIP file.

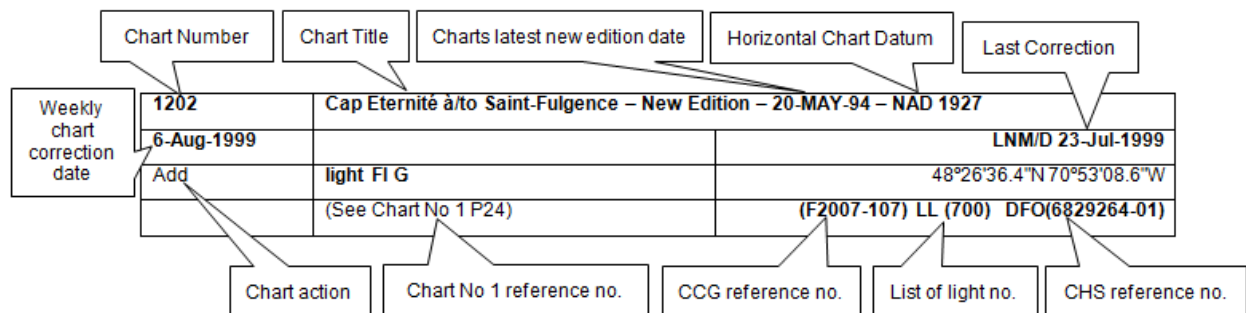
## Explanatory Notes – Canadian Hydrographic Service (CHS)

### Chart Corrections – Section 2 of *Notices to Mariners*

Corrections to nautical charts will be listed in numerical order by chart number. Each chart correction listed applies only to that particular chart. Related charts, if any, will have their own specific correction listed separately.

Users should also refer to CHS *Chart 1: Symbols, Abbreviations and Terms* for additional information pertaining to the correction of charts.

The illustration below describes the elements that will comprise a typical Section 2 chart correction:



The last correction number is identified with the **LNMD** or **Last Notice to Mariners Number / Date**.

Mariners are advised that only the most critical changes that directly affect safety to navigation are issued in “Section 2 – Chart Corrections.” This limitation is required to ensure that charts remain as clear and easy to read as possible. As a result, mariners may see minor discrepancies of a non-critical nature between information in official publications. For example, a small change in the nominal range or focal height of a light may not result in the production of a chart correction in *Notices to Mariners*, but may result in a correction in the [List of Lights, Buoys and Fog Signals](#) publication.

**Note:** In the case of a discrepancy between information provided on CHS charts relating to aids to navigation, and the *List of Lights, Buoys and Fog Signals* publication, the latter shall be deemed as containing the most up-to-date information.

### Canadian Nautical Charts & Publications

A source list of Canadian nautical charts and publications is published in Notice No. 14 of the *Notices to Mariners Annual Edition 2021*. The source supply and the prices effective at the time of printing are listed. For current chart edition dates, please refer to the following website: [www.chs-shc.gc.ca/charts-cartes/paper-papier/index-eng.asp](http://www.chs-shc.gc.ca/charts-cartes/paper-papier/index-eng.asp).

## Explanatory Notes – Marine Communications and Traffic Services (MCTS)

### Navigational Warnings / Notices to Shipping

The Canadian Coast Guard (CCG) is implementing a number of changes to the aids to navigation system in Canada.

These changes are advertised as Navigational Warnings, formerly called Notices to Shipping<sup>1</sup>, that are broadcast by the CCG, and are then followed up with Notices to Mariners, then charts are updated by hand correction, reprints or new editions.

Mariners are advised that all relevant Navigational Warnings (NAVWARNs) should be kept until superseded by Notices to Mariners or through revised charts issued by the Canadian Hydrographic Service (CHS).

NAVWARNs are accessible on the applicable regional page on the CCG Navigational Warnings website at <http://nis.ccg-gcc.gc.ca>.

CHS is reviewing the impact of these changes with CCG and together are preparing an action plan on the issuing of chart revisions.

For further information, contact your regional NAVWARN Issuing Desk.

<p><b>Western Region</b> <b>Prince Rupert MCTS Centre</b></p> <p>“P” Series NAVWARNs</p> <p>Canadian Coast Guard Bag 4444 Prince Rupert, BC V8J 4K2</p> <p>Telephone: 250-627-3070</p> <p>Email: <a href="mailto:NAVWARN.MCTSPrinceRupert@innav.gc.ca">NAVWARN.MCTSPrinceRupert@innav.gc.ca</a></p>	<p><b>Arctic Region</b> <b>*Iqaluit MCTS Centre</b></p> <p><i>Operational from approximately mid-May until late December.</i></p> <p>“A” and “H” Series NAVWARNs</p> <p>Canadian Coast Guard P.O. Box 189 Iqaluit, NU X0A 0H0</p> <p><u>“A” Series NAVWARNs</u> Telephone: 867-979-5269</p> <p><u>“H” Series NAVWARNs</u> Telephone: 867-979-0310</p> <p>Facsimile: 867-979-4264</p> <p>Email: <a href="mailto:NAVWARN.MCTSIqaluit@innav.gc.ca">NAVWARN.MCTSIqaluit@innav.gc.ca</a></p>
---	---

\*Service available in English and in French.

<sup>1</sup> The expression “Notice to Shipping” was changed to “Navigational Warning” in January 2019.

## Table of Contents

<b>Section 1: General and Safety Information</b>	<b>1</b>
Canadian Coast Guard Publication – Comments and Suggestions on Notices to Mariners (NOTMAR) Publications.....	1
Transport Canada – COVID-19 Measures, Updates and Guidance.....	1
Canadian Hydrographic Service – Notices to Mariners for Changes in Buoy Shape .....	1
Anguniaqvia Niqiqyuam Marine Protected Area (ANMPA) And Tarium Niryutait Marine Protected Areas (TNMPA) – Beluga And Bowhead Whale Protection: Voluntary Avoidance And Slowdown Areas.....	2
*801/21 Canadian Hydrographic Service – Electronic Navigational Charts.....	5
*802/21 Transport Canada – Ship Safety Bulletins #10, #11, #12 and #13/2021 .....	6
*803/21 West Coast Haida Gwaii – Trial Voluntary Protection Zone for Shipping .....	6
<b>Section 1A: Temporary and Preliminary Notices</b>	<b>8</b>
Reminder – Comment Period for Active Preliminary Notices .....	8
*811(T)/21 Plans - Stuart Channel – Marine Works.....	8
*812(P)/21 Hugh Keenleyside Dam to/à Burton – Aids to Navigation to be Discontinued.....	9
<b>Section 2: Chart Corrections</b>	<b>10</b>
<b>Section 3: Radio Aids to Marine Navigation Corrections</b>	<b>15</b>
No corrections for this section. ....	15
<b>Section 4: Sailing Directions and Small Craft Guide Corrections</b>	<b>16</b>
<b>Section 5: List of Lights, Buoys and Fog Signals Corrections</b>	<b>19</b>
No corrections for this section. ....	19

## Numerical Index of Canadian Charts Affected

This numerical index lists all nautical charts mentioned in this monthly edition of Notices to Mariners. Only charts appearing in Section 2 of this publication require a chart correction. The appearance of charts in all other sections, particularly those related to the correction of other nautical publications, is included here for reference.

Chart No.	Pages	Chart No.	Pages	Chart No.	Pages
3056	<a href="#">9</a>				
3447	<a href="#">10</a>				
3456	<a href="#">11</a>				
3458	<a href="#">11, 12</a>				
3475	<a href="#">8</a>				
3489	<a href="#">12</a>				
3490	<a href="#">8, 12</a>				
3491	<a href="#">12</a>				
3513	<a href="#">12, 13</a>				
3527	<a href="#">13</a>				
3540	<a href="#">13, 14</a>				
3546	<a href="#">8</a>				
3547	<a href="#">14</a>				
3646	<a href="#">14</a>				
3863	<a href="#">14</a>				
6035	<a href="#">14</a>				
7010	<a href="#">14</a>				
7011	<a href="#">14</a>				

## **Section 1: General and Safety Information**

---

### **Canadian Coast Guard Publication – Comments and Suggestions on Notices to Mariners (NOTMAR) Publications**

In an effort to continuously improve the Notices to Mariners publications and to provide the most efficient service possible, the Notices to Mariners team invites all mariners and other interested parties to submit comments and suggestions on possible improvements to its various publications and services at the following email address: [Notmar.XNCR@dfo-mpo.gc.ca](mailto:Notmar.XNCR@dfo-mpo.gc.ca).

### **Transport Canada – COVID-19 Measures, Updates and Guidance**

(Recurrent publication of notice \*401/20, originally published in the *Notices to Mariners – Monthly Western Edition 04/2020* publication.)

Please refer to the link below for the latest updates to transportation related measures taken by Transport Canada in response to the evolving novel Coronavirus disease (COVID-19):  
<https://www.tc.gc.ca/en/initiatives/covid-19-measures-updates-guidance-tc.html>.

For travel advice and all other updates, please visit: [Canada.ca/coronavirus](https://Canada.ca/coronavirus).

### **Canadian Hydrographic Service – Notices to Mariners for Changes in Buoy Shape**

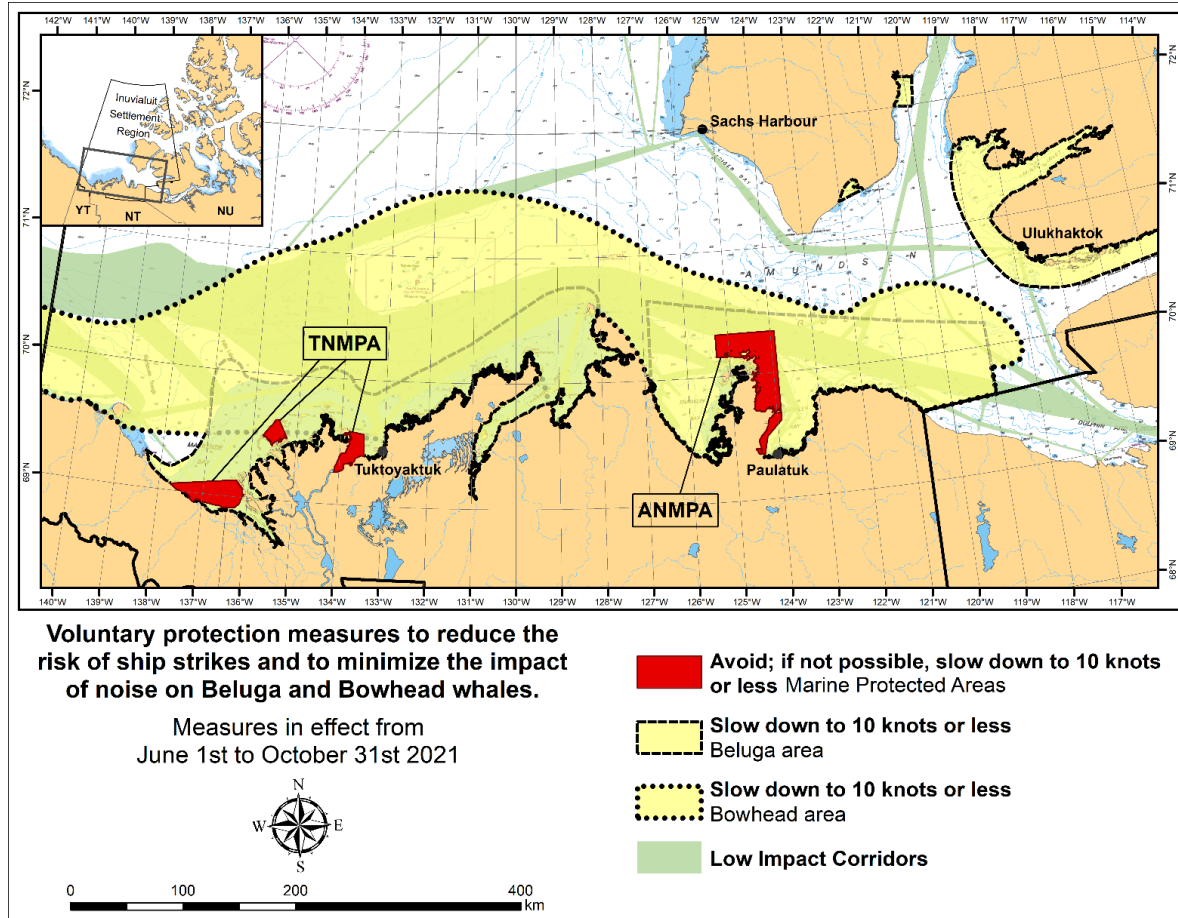
(Recurrent publication of notice \*906/20, originally published in the *Notices to Mariners – Monthly Western Edition 09/2020* publication.)

As part of the CHS Digital Transformation and for the sake of economy, CHS will no longer systematically issue Notices to Mariners (NTM) for buoy shape changes only. These changes will, however, be applied to electronic navigation charts (ENCs) where applicable. The paper and raster versions will be updated during the New Edition process.



## Anguniaqvia Niqiqyam Marine Protected Area (ANMPA) And Tarium Niryutait Marine Protected Areas (TNMPA) – Beluga And Bowhead Whale Protection: Voluntary Avoidance And Slowdown Areas

(Recurrent publication of notice \*506/21, originally published in the *Notices to Mariners – Monthly Western Edition 05/2021* publication.)



The two established Marine Protected Areas (MPAs) in Canada's Western Arctic are located within the Inuvialuit Settlement Region, as such all activities must comply with the [Inuvialuit Final Agreement](#). Protection and preservation of Arctic wildlife, the environment and biological productivity is one of the principles of the Inuvialuit Final Agreement and it is this principle that led the Inuvialuit Regional Corporation and the Inuvialuit Game Council to initiate establishment of the Western Arctic MPAs. The waters in and near the MPAs, and the offshore marine habitats of the Beaufort Sea and Amundsen Gulf, are important summer foraging habitats used seasonally (May-October) by the Eastern Beaufort Sea beluga stock, and the Bering-Chukchi-Beaufort bowhead population.

### Regulatory Protection Measures

All whale species are protected under the Marine Mammal Regulations, pursuant to the *Fisheries Act*. Within the boundaries of the MPAs, a general prohibition is set out in the Regulations, pursuant to the *Oceans Act*. Any incident with a marine mammal within the MPAs must be reported within two hours after its occurrence, to the Canadian Coast Guard. For marine wildlife sightings and incidents such as collisions that occur outside the MPAs or for any situation involving a marine mammal that is dead or in trouble, contact Fisheries and Oceans Canada, Inuvik office at (867) 777-7500.

For more information on the ANMPA and TNMPA, including local contacts and species specific minimum distances, see Section A2 - Notices 5 and 5A.3 of the *Notices to Mariners Annual Edition 2021*.

**Voluntary Protection Measures**

Voluntary measures are in effect from June 1<sup>st</sup> to October 31<sup>st</sup>, 2021. See map above.

These measures apply to merchant vessels, cruise ships, small vessels and adventure craft within the boundaries of the MPAs and the additional identified areas to prevent collisions with whales and to mitigate the underwater noise generated by the vessels. These measures should only be taken when they will not jeopardize navigational safety.

**Avoid (red area):** To reduce the risk of underwater noise disturbance and collisions with whales within the MPAs, vessels should avoid transiting through the MPAs if possible. If passage through this area is required, vessels should slow down to a maximum speed through the water of 10 knots and post a lookout such as a marine mammal observer in order to increase the chances of seeing the whales and thus taking necessary measures to avoid them. If bypassing the whales is not possible, slow down and wait for the animals to move away to a distance greater than 400 metres (0.215 nautical miles) before resuming original speed up to 10 knots. It is more difficult to see the animals in rain, fog, or in rough sea states, therefore increased caution is recommended.

**Slow down to 10 knots or less (yellow area):** To reduce the risk of underwater noise disturbance and collisions with whales within this area, it is recommended that vessels should slow down to a maximum speed through the water of 10 knots, remain in the navigation and marked community supply channels and post a lookout.

These voluntary measures are secondary to rights under the Inuvialuit Final Agreement.

**MPA Coordinates**

The Tarium Niryutait Marine Protected Areas consist of three areas of the Mackenzie Bay: Okeevik, Kittigaryuit and Niaqunnaq. The three areas are bounded by rhumb lines connecting the following geographical coordinates [North America Datum 1983 (NAD 83)/World Geodetic System (WGS 84)].

Okeevik Sub Area		
Point	Latitude (North)	Longitude (West)
1	69° 38' 19"	135° 25' 09"
2	69° 38' 03"	135° 25' 11"
3	69° 37' 46"	135° 24' 52"
4	69° 29' 49"	135° 12' 49"
5	69° 30' 45"	135° 16' 56"
6	69° 29' 26"	135° 18' 53"
7	69° 29' 23"	135° 19' 06"
8	69° 28' 07"	135° 20' 25"
9	69° 27' 36"	135° 24' 25"
10	69° 25' 51"	135° 32' 27"
11	69° 26' 32"	135° 34' 54"
12	69° 28' 21"	135° 35' 24"
13	69° 28' 35"	135° 36' 40"
14	69° 28' 39"	135° 37' 58"
15	69° 30' 34"	135° 45' 54"
16	69° 35' 18"	135° 35' 42"
17	69° 36' 00"	135° 22' 10"
18	69° 34' 40"	135° 20' 09"
19	69° 34' 00"	135° 20' 09"
20	69° 34' 00"	135° 27' 39"
21	69° 36' 00"	135° 27' 39"
22	69° 27' 00"	135° 31' 11"
23	69° 27' 00"	135° 34' 45"

Kittigaryuit Sub Area		
Point	Latitude (North)	Longitude (West)
1	69° 35' 10"	133° 48' 26"
2	69° 34' 00"	133° 28' 00"
3	69° 23' 37"	133° 26' 40"
4	69° 20' 34"	133° 40' 37"
5	69° 19' 05"	133° 42' 21"
6	69° 19' 01"	133° 42' 31"
7	69° 20' 39"	133° 43' 20"
8	69° 16' 42"	133° 54' 54"
9	69° 15' 20"	134° 06' 53"
10	69° 16' 33"	134° 05' 56"
11	69° 20' 42"	134° 02' 44"
12	69° 24' 00"	133° 59' 10"
13	69° 24' 34"	133° 53' 49"
14	69° 28' 21"	133° 48' 15"
15	69° 28' 02"	133° 50' 59"
16	69° 33' 20"	133° 47' 29"
17	69° 34' 33"	133° 47' 42"
18	69° 32' 55"	133° 51' 09"
19	69° 32' 56"	133° 51' 54"
20	69° 33' 46"	133° 55' 48"
21	69° 33' 46"	133° 55' 31"

<b>Niaqunnaq Sub Area</b>		
<b>Point</b>	<b>Latitude (North)</b>	<b>Longitude (West)</b>
1	69° 08' 00"	136° 16' 44"
2	69° 04' 25"	136° 07' 45"
3	69° 03' 43"	136° 07' 08"
4	69° 01' 19"	136° 04' 45"
5	69° 01' 14"	136° 04' 45"
6	69° 00' 57"	136° 05' 42"
7	69° 00' 12"	136° 07' 08"
8	68° 57' 00"	136° 10' 00"
9	68° 55' 00"	136° 15' 00"
10	68° 54' 22"	136° 31' 50"
11	68° 55' 00"	136° 38' 33"
12	68° 56' 15"	137° 00' 41"
13	68° 56' 29"	137° 03' 03"
14	68° 55' 48"	137° 11' 00"
15	68° 57' 50"	137° 16' 40"
16	68° 59' 20"	137° 21' 30"
17	69° 03' 09"	137° 44' 54"

The Anguniaqvia niqiyuam Marine Protected Areas consist of two areas in Darnley Bay and Amundsen Gulf in the Beaufort Sea: Zone 1 and Zone 2. The areas consist of the seabed, the subsoil to a depth of five metres and the water column, including the sea ice. The two areas are bounded by straight lines connecting the following geographical coordinates [North America Datum 1983 (NAD 83)].

<b>Zone 1</b>		
<b>Point</b>	<b>Latitude (North)</b>	<b>Longitude (West)</b>
A	69° 21' 07.8"	124° 21' 32.0" approx
B	70° 12' 00.0" approx	124° 31' 55.2"
C	70° 08' 22.0"	124° 41' 45.0" approx
D	70° 09' 09.9"	124° 57' 42.0" approx
E	70° 09' 13.0" approx	125° 05' 28.6"
F	70° 09' 13.2"	125° 17' 53.0"
G	70° 20' 00.0"	125° 17' 53.0"
H	70° 20' 00.0"	123° 54' 17.5"
I	69° 37' 20.6"	123° 54' 17.5"
J	69° 30' 00.0"	124° 15' 34.7"

<b>Zone 2</b>		
<b>Point</b>	<b>Latitude (North)</b>	<b>Longitude (West)</b>
K	70° 04' 15.8"	124° 41' 51.0" approx
L	70° 04' 48.6"	124° 41' 54.0" approx
M	70° 02' 12.9"	124° 35' 23.0" approx
N	70° 02' 12.9"	124° 35' 29.0" approx

**\*801/21 Canadian Hydrographic Service – Electronic Navigational Charts**

S-57 ENC Number	Chart Title	ENC Compilation Scale	Published
<b>New Charts</b>			
CA471012 (Edn 1.000)	Masset Harbour and/et Naden Harbour	1:180 000	2021-08-20
CA471014 (Edn 1.000)	Hippa Island, Seal Inlet, Tartu Inlet, Masset Inlet	1:180 000	2021-08-20
CA471016 (Edn 1.000)	Cartwright Sound, Skidegate Channel	1:45 000	2021-08-20
CA471017 (Edn 1.000)	Skidegate Channel, Skidegate Inlet	1:45 000	2021-08-20
CA471018 (Edn 1.000)	Dogfish Banks	1:180 000	2021-08-20
CA571047 (Edn 1.000)	Houston Stewart Channel (Part 1 of 9)	1:22 000	2021-08-06
CA571048 (Edn 1.000)	Houston Stewart Channel (Part 2 of 9)	1:22 000	2021-08-06
CA571049 (Edn 1.000)	Houston Stewart Channel (Part 3 of 9)	1:22 000	2021-08-06
CA571050 (Edn 1.000)	Houston Stewart Channel (Part 4 of 9)	1:22 000	2021-08-06
CA571051 (Edn 1.000)	Houston Stewart Channel (Part 5 of 9)	1:22 000	2021-08-06
CA571052 (Edn 1.000)	Houston Stewart Channel (Part 6 of 9)	1:22 000	2021-08-06
CA571053 (Edn 1.000)	Houston Stewart Channel (Part 7 of 9)	1:22 000	2021-08-06
CA571054 (Edn 1.000)	Houston Stewart Channel (Part 8 of 9)	1:22 000	2021-08-06
CA571055 (Edn 1.000)	Houston Stewart Channel (Part 9 of 9)	1:22 000	2021-08-06
CA576592 (Edn 1.000)	Humber Arm, Meadows Point to/à Humber River	1:10 000	2021-08-27
CA576593 (Edn 1.000)	Blue Beach	1:2 500	2021-08-13
<b>New Editions</b>			
CA279043 (Edn 12.000)	Cap Whittle à/to Havre-Saint-Pierre et/and Île d'Anticosti	1:150 000	2021-08-13
CA279044 (Edn 15.000)	Havre Saint-Pierre et/and Cap des Rosiers à/to Pointe des Monts	1:150 000	2021-08-13
CA373267 (Edn 8.000)	Queen Maud Gulf Eastern Portion	1:75 000	2021-08-27
CA379149 (Edn 7.000)	Baie Naticotec - Île d'Anticosti	1:36 000	2021-08-13
CA379151 (Edn 9.000)	Pointe de l'Est - Île d'Anticosti	1:36 000	2021-08-13
CA473456 (Edn 3.000)	Approaches to/ Approches à Koojesse Inlet	1:20 000	2021-08-13
CA573470 (Edn 2.000)	Koojesse Inlet	1:6 000	2021-08-13
<b>Charts Permanently Withdrawn</b>			
CA470178	Masset Harbour and/et Naden Harbour		
CA470197	Approaches to/Approches à Skidegate Inlet		
CA470204	Skidegate Channel		
CA570498	Houston Stewart Channel	Cancelled by CA571055, CA571051, CA571052, CA571053, CA571054, CA571049, CA571050, CA571047, CA571048	
CA576185	Humber Arm - Meadows Point to/à Humber River	Cancelled by CA576592	

**\*802/21 Transport Canada – Ship Safety Bulletins #10, #11, #12 and #13/2021**

New **Ship Safety Bulletins** have recently been posted on the [Transport Canada website](#).

To view or download these bulletins, please click on the links below:

[SSB#10/2021](#) – New Vessel Safety Certificates Regulations and Canadian Inspection Standard  
RDIMS#16442445

[SSB#11/2021](#) – Updated guidelines respecting the mobility of asymptomatic, presumed non-COVID-19-carrying\* seafarers in the marine sector during the COVID-19 pandemic  
RDIMS#17713349

[SSB#12/2021](#) – Protecting killer whales in the waters of southern British Columbia  
RDIMS#17657339

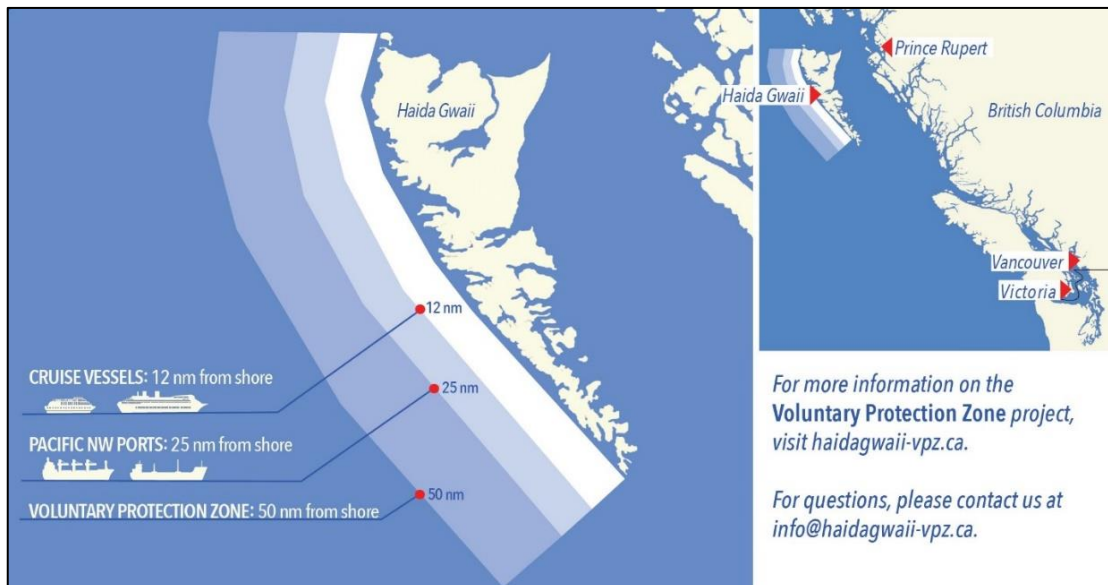
[SSB#13/2021](#) – Trial Voluntary Protection Zone for Shipping, West Coast Haida Gwaii  
RDIMS#17816272

Sign up for [e-Bulletin](#) to receive an e-mail notice each time a new Ship Safety Bulletin is published on our website.

Contact us at [marinesafety-securitemaritime@tc.gc.ca](mailto:marinesafety-securitemaritime@tc.gc.ca) or 1-855-859-3123 (Toll Free).

**\*803/21 West Coast Haida Gwaii – Trial Voluntary Protection Zone for Shipping**

Reference: Notice \*107/21 is cancelled.



**Trial Voluntary Protection Zone for Shipping, West Coast Haida Gwaii (formerly Queen Charlotte Islands)**

Haida Gwaii's remote location, rugged coastline, variable sea and weather conditions, and rich ecological and cultural heritage make it vulnerable to the potential for pollution from shipping breakdowns and accidents. Increasing the distance vessels travel offshore can increase the amount of time available to address propulsion, steering or other issues, and the likelihood of a towing vessel being able to respond to a vessel that is disabled or drifting. This in turn reduces the risk of grounding and oil spills.

A trial Voluntary Protection Zone for Shipping on the West Coast of Haida Gwaii will be in effect from September 1, 2020 through October 31, 2021. In the Voluntary Protection Zone, commercial vessels of 500 gross tonnage or greater shall observe a minimum distance of 50 nautical miles offshore when transiting along the West Coast of Haida Gwaii with the following exceptions:

- Cruise vessels, to observe a minimum 12 nm distance from shore;
- Vessels transiting between Pacific Northwest ports (Washington, Alaska, BC), to observe a minimum 25 nm distance from shore;
- Tugs and barges (including pushing and towing alongside), no minimum distance; and
- Fishing vessels, no minimum distance.

The Voluntary Protection Zone for Shipping coordinates are:

54° 15.436' N	133° 04.788' W
54° 17.572' N	134° 02.484' W
54° 13.614' N	134° 19.427' W
54° 11.786' N	134° 30.841' W
53° 44.036' N	134° 32.677' W
53° 11.118' N	134° 16.412' W
52° 18.483' N	133° 20.917' W
51° 24.590' N	132° 04.081' W
51° 56.158' N	131° 01.830' W

Vessels are requested to adhere to these distances on a voluntary basis and only when it does not jeopardize the safety of navigation, the vessel, the persons aboard, and the cargo.

(NW-P-1085-20)

## Section 1A: Temporary and Preliminary Notices

### Reminder – Comment Period for Active Preliminary Notices

This is a reminder that the comment period is still open for the following active Preliminary notices:

Notice #	Reference Chart #	Aids Affected (LL #)	Intent of Notice
<b>Pacific Coast</b>			
<a href="#">611(P)/21</a>	3490	5237, 368.5	Aids to Navigation to be Discontinued
<a href="#">612(P)/21</a>	3546	5351	Daybeacon to be Discontinued
<a href="#">613(P)/21</a>		N/A	Construction on Fixed Aids to Navigation
<b>Other Preliminary Notices</b>			
<a href="#">614(P)/21</a>		N/A	Raster Navigational Charts to be Discontinued

Please refer to the [Notices to Mariners - Monthly Summary of Temporary and Preliminary Notices](#) publication for details.

### Inland Waters

No notices applicable for this edition.

### Pacific Coast

#### Temporary Notices

#### \*811(T)/21 Plans - Stuart Channel – Marine Works

Reference chart: 3475

Log booming at 48° 59.672'N 123° 48.201'W to 49° 00.551'N 123° 49.510'W.

Hours of operation are Monday to Friday from 1300UTC until 0100UTC.

Caution. Minimum wake during hours of operation.

(NW-P-1003-21)

#### Preliminary Notices

##### Western Region

##### Comment Submission

Comments on proposed changes in preliminary (P) notices are solicited from mariners and other interested parties within three months of the initial publication date. Following this date, the notices will be cancelled. Any objections raised must state the facts on which they are based and should include supporting information on safety, commerce and public benefit.

Comments should be directed to the following:

A/Superintendent, Glenna Evans  
Aids to Navigation & Waterways  
Canadian Coast Guard, Western Region  
25 Huron Street  
Victoria, BC V8V 4V9  
Telephone: (250) 480-2602  
Fax: (250) 480-2702  
Email: [glenna.evans@dfo-mpo.gc.ca](mailto:glenna.evans@dfo-mpo.gc.ca)

**\*812(P)/21 Hugh Keenleyside Dam to à Burton – Aids to Navigation to be Discontinued**

Reference chart: 3056

The Canadian Coast Guard proposes to permanently discontinue the following aids to navigation:

Aid Name	LL #	Position
Needles Sector	29.5	49° 53' 50.8"N 118° 05' 04.5"W
Upper Whatshan Sector	30	49° 54' 00.0"N 118° 04' 41.8"W
Lower Whatshan Sector	31	49° 55' 22.8"N 118° 03' 15.7"W

Initial publication date: Friday, August 27, 2021

[Comment submission deadline](#): Thursday, November 25, 2021

(P2021-017)



## Section 2: Chart Corrections

### 3447 - Nanaimo Harbour and/et Departure Bay - New Edition - 21-DEC-2012 - World Geodetic System 1984

20-AUG-2021

LNMD. 11-DEC-2020

Add	wreck WK with known depth of 19.3 metres (See Chart No. 1, K26) This notice affects Electronic Navigational Chart: CA470756, CA570383	49°12'31.7"N 123°56'44.3"W	<i>DFO(6204424-01)</i>
Delete	depth of 1.9 metres (See Chart No. 1, I10) This notice affects Electronic Navigational Chart: CA570383	49°12'30.3"N 123°57'05.3"W	<i>DFO(6204424-03)</i>
Add	depth of 0.7 metres (See Chart No. 1, I10) This notice affects Electronic Navigational Chart: CA570383	49°12'30.5"N 123°57'05.4"W	<i>DFO(6204424-04)</i>
Add	depth of 1.9 metres (See Chart No. 1, I10) This notice affects Electronic Navigational Chart: CA570383	49°11'33.3"N 123°57'04.5"W	<i>DFO(6204424-05)</i>
Add	depth of 0.4 metres (See Chart No. 1, I10) This notice affects Electronic Navigational Chart: CA570383	49°11'33.2"N 123°55'15.5"W	<i>DFO(6204424-06)</i>
Add	rock which covers and uncovers with drying height of 0.3 metres (See Chart No. 1, K11) This notice affects Electronic Navigational Chart: CA570383	49°11'28.3"N 123°55'15.6"W	<i>DFO(6204424-07)</i>
Delete	depth of 0.1 metres (See Chart No. 1, I10) This notice affects Electronic Navigational Chart: CA570383	49°11'16.3"N 123°55'11.3"W	<i>DFO(6204424-08)</i>
Add	rock awash at chart datum (See Chart No. 1, K12) This notice affects Electronic Navigational Chart: CA570383	49°11'16.2"N 123°55'11.2"W	<i>DFO(6204424-09)</i>
Delete	depth of 1.2 metres (See Chart No. 1, I10) This notice affects Electronic Navigational Chart: CA570383	49°11'33.9"N 123°55'14.2"W	<i>DFO(6204424-10)</i>
27-AUG-2021		LNMD. 20-AUG-2021	
Add	depth of 1.8 metres (See Chart No. 1, I10) This notice affects Electronic Navigational Chart: CA570383	49°10'44.3"N 123°54'43.3"W	<i>DFO(6204478-01)</i>
Delete	depth of 3.4 metres (See Chart No. 1, I10) This notice affects Electronic Navigational Chart: CA570383	49°10'44.3"N 123°54'42.8"W	<i>DFO(6204478-02)</i>

**3456 - Halibut Bank to/à Ballenas Channel - New Chart - 01-JUL-2011 - NAD 1983**

20-AUG-2021		LNMD. 11-DEC-2020
Add	wreck WK with known depth of 19.3 metres (See Chart No. 1, K26) This notice affects Electronic Navigational Chart: CA470756, CA570383	49°12'31.7"N 123°56'44.3"W  <i>DFO(6204424-01)</i>
27-AUG-2021		LNMD. 20-AUG-2021
Add	pipeline (See Chart No. 1, L40.1)  This notice affects Electronic Navigational Chart: CA470756	joining 49°10'34.5"N 123°55'27.4"W 49°10'33.8"N 123°55'32.3"W 49°10'34.0"N 123°55'34.4"W and 49°10'25.2"N 123°56'27.4"W  <i>DFO(6204477-01)</i>
Add	submarine cable (See Chart No. 1, L30.1)  This notice affects Electronic Navigational Chart: CA470756	joining 49°10'14.5"N 123°56'10.9"W 49°10'14.8"N 123°56'08.2"W and 49°10'35.8"N 123°55'31.6"W  <i>DFO(6204477-02)</i>

**3458 - Approaches to/Approches à Nanaimo Harbour - New Edition - 10-MAR-1995 - NAD 1983**

20-AUG-2021		LNMD. 11-DEC-2020
Add	wreck WK with known depth of 19.3 metres (See Chart No. 1, K26) This notice affects Electronic Navigational Chart: CA470756, CA570383	49°12'31.7"N 123°56'44.3"W  <i>DFO(6204424-01)</i>
Delete	depth of 4.6 metres (See Chart No. 1, I10) This notice affects Electronic Navigational Chart: CA570383	49°12'30.2"N 123°57'06.0"W  <i>DFO(6204424-02)</i>
Add	depth of 0.7 metres (See Chart No. 1, I10) This notice affects Electronic Navigational Chart: CA570383	49°12'30.5"N 123°57'05.4"W  <i>DFO(6204424-04)</i>
Add	depth of 0.4 metres (See Chart No. 1, I10) This notice affects Electronic Navigational Chart: CA570383	49°11'33.2"N 123°55'15.5"W  <i>DFO(6204424-06)</i>
Add	rock which covers and uncovers with drying height of 0.3 metres (See Chart No. 1, K11) This notice affects Electronic Navigational Chart: CA570383	49°11'28.3"N 123°55'15.6"W  <i>DFO(6204424-07)</i>
Delete	depth of 0.1 metres (See Chart No. 1, I10) This notice affects Electronic Navigational Chart: CA570383	49°11'16.3"N 123°55'11.3"W  <i>DFO(6204424-08)</i>
Add	rock awash at chart datum (See Chart No. 1, K12) This notice affects Electronic Navigational Chart: CA570383	49°11'16.2"N 123°55'11.2"W  <i>DFO(6204424-09)</i>

Delete	depth of 1.2 metres (See Chart No. 1, I10) This notice affects Electronic Navigational Chart: CA570383	49°11'33.9"N 123°55'14.2"W	<i>DFO(6204424-10)</i>
<b>3489 - Pattullo Bridge to/à Barnston Island - Sheet/Feuille 1 - New Chart - 21-OCT-1994 - NAD 1983</b>			
	13-AUG-2021		LNMD. 14-MAY-2021
Amend	vertical clearance of 0.4 metres, to read 1.3 metres (See Chart No. 1, D22) This notice affects Electronic Navigational Chart: CA570015	49°12'55.6"N 122°55'20.0"W	<i>DFO(6204471-01)</i>
<b>3490 - Fraser River/Fleuve Fraser, Sand Heads to/à Douglas Island, Compartment B-C - New Edition - 02-NOV-2012 - World Geodetic System 1984</b>			
	13-AUG-2021		LNMD. 14-MAY-2021
Amend	vertical clearance of 2.1 metres, to read 1.3 metres (See Chart No. 1, D22) This notice affects Electronic Navigational Chart: CA570015	49°11'37.3"N 122°55'28.0"W	<i>DFO(6204471-01)</i>
<b>3491 - Compartment A-B - New Edition - 19-OCT-2012 - World Geodetic System 1984</b>			
	13-AUG-2021		LNMD. 04-JUN-2021
Amend	vertical clearance of 20 metres, to read 19 metres (See Chart No. 1, D22) This notice affects Electronic Navigational Chart: CA570176	49°11'57.0"N 123°08'11.7"W	<i>DFO(6204474-01)</i>
Amend	vertical clearance of 20 metres, to read 19 metres (See Chart No. 1, D22) This notice affects Electronic Navigational Chart: CA570176	49°12'07.0"N 123°04'41.7"W	<i>DFO(6204475-01)</i>
<b>3491 - Compartment B-C - New Edition - 19-OCT-2012 - World Geodetic System 1984</b>			
	13-AUG-2021		LNMD. 04-JUN-2021
Amend	vertical clearance of 2.1 metres, to read 1.3 metres (See Chart No. 1, D22) This notice affects Electronic Navigational Chart: CA570015	49°11'37.3"N 122°55'28.0"W	<i>DFO(6204471-01)</i>
<b>3513 - Strait of Georgia, Northern Portion/Partie Nord - New Edition - 29-OCT-1999 - NAD 1983</b>			
	06-AUG-2021		LNMD. 26-FEB-2021
Add	depth of 1.3 metres (See Chart No. 1, I10) This notice affects Electronic Navigational Chart: CA370016	49°40'12.0"N 124°53'07.2"W	<i>DFO(6204433-01)</i>
Add	depth of 1.7 metres (See Chart No. 1, I10) This notice affects Electronic Navigational Chart: CA370016	49°37'08.6"N 124°49'47.9"W	<i>DFO(6204433-02)</i>
Add	depth of 0.3 metres (See Chart No. 1, I10) This notice affects Electronic Navigational Chart: CA370016	49°39'08.2"N 124°52'54.1"W	<i>DFO(6204433-03)</i>

Delete	depth of 1.8 metres (See Chart No. 1, I10) This notice affects Electronic Navigational Chart: CA370016	49°39'04.9"N 124°52'34.9"W  <i>DFO(6204433-04)</i>
Add	depth of 0.1 metres (See Chart No. 1, I10) This notice affects Electronic Navigational Chart: CA370016	49°39'07.2"N 124°52'37.4"W  <i>DFO(6204433-05)</i>
Add	depth of 0.1 metres (See Chart No. 1, I10) This notice affects Electronic Navigational Chart: CA370016	49°39'11.5"N 124°52'27.0"W  <i>DFO(6204433-06)</i>
Add	rock awash at chart datum (See Chart No. 1, K12) This notice affects Electronic Navigational Chart: CA370016	49°39'17.2"N 124°52'15.2"W  <i>DFO(6204433-07)</i>
Delete	depth of 1.5 metres (See Chart No. 1, I10) This notice affects Electronic Navigational Chart: CA370016	49°38'51.8"N 124°51'37.6"W  <i>DFO(6204433-08)</i>
Add	depth of 0.4 metres (See Chart No. 1, I10) This notice affects Electronic Navigational Chart: CA370016	49°38'50.1"N 124°51'40.8"W  <i>DFO(6204433-09)</i>
Add	depth of 1.6 metres (See Chart No. 1, I10) This notice affects Electronic Navigational Chart: CA370016	49°38'04.8"N 124°51'25.6"W  <i>DFO(6204433-10)</i>
Add	depth of 0.3 metres (See Chart No. 1, I10) This notice affects Electronic Navigational Chart: CA370016	49°38'53.3"N 124°52'15.9"W  <i>DFO(6204433-11)</i>
<b>3527 - Baynes Sound - New Edition - 06-APR-2001 - NAD 1983</b>		
06-AUG-2021		LNMD. 30-APR-2021
Affix	patch Download Patch - <a href="https://www.notmar.gc.ca/chsftp/patches/3527_6204428_1_202107051323.pdf">https://www.notmar.gc.ca/chsftp/patches/3527_6204428_1_202107051323.pdf</a> This notice affects Electronic Navigational Chart: CA470218	49°28'00.0"N 124°45'00.0"W  <i>DFO(6204428-01)</i>
Affix	patch Download Patch - <a href="https://www.notmar.gc.ca/chsftp/patches/3527_6204433_12_202107061716.pdf">https://www.notmar.gc.ca/chsftp/patches/3527_6204433_12_202107061716.pdf</a> This notice affects Electronic Navigational Chart: CA470218	49°40'00.0"N 124°50'00.0"W  <i>DFO(6204433-12)</i>
<b>3540 - Approaches to/Approches à Campbell River - New Edition - 01-FEB-2016 - World Geodetic System 1984</b>		
27-AUG-2021		LNMD. 19-JUN-2020
Add	depth of 2.6 metres (See Chart No. 1, I10) This notice affects Electronic Navigational Chart: CA570195	50°02'11.5"N 125°14'31.7"W  <i>DFO(6204479-01)</i>

Add depth of 1.2 metres 50°02'09.2"N 125°14'29.9"W  
(See Chart No. 1, I10)  
This notice affects Electronic Navigational Chart: CA570195  
*DFO(6204479-02)*

**3547 - Queen Charlotte Strait Eastern Portion/Partie Est - New Chart - 28-APR-1989 - NAD 1983**  
06-AUG-2021 LNMD. 27-MAR-2020  
Add marine farm 50°51'52.7"N 126°55'20.7"W  
(See Chart No. 1, K48.2)  
This notice affects Electronic Navigational Chart: CA470312  
*DFO(6204473-01)*

**3646 - Bamfield Inlet - New Edition - 30-JUN-1995 - NAD 1983**  
27-AUG-2021 LNMD. 22-MAY-2020  
Add outfall pipe joining 48°50'08.6"N 125°08'09.5"W  
(See Chart No. 1, L41.1) 48°50'13.0"N 125°08'11.5"W  
and 48°50'24.1"N 125°08'19.2"W  
This notice affects Electronic Navigational Chart: CA570227  
*DFO(6204480-01)*

**3863 - Port Chanal - New Edition - 25-APR-1980 - NAD 1927**  
06-AUG-2021 LNMD. 21-NOV-2003  
Add depth of ½ fathoms 53°36'48.2"N 132°56'41.2"W  
(See Chart No. 1, I10)  
*DFO(6204472-01)*

**6035 - Lake Nipissing / Lac Nipissing(Eastern Portion / Partie est) - New Edition - 28-DEC-2001 - NAD 1983**  
13-AUG-2021 LNMD. 17-FEB-2017  
Affix patch 46°07'30.0"N 079°33'00.0"W  
Download Patch - [https://www.notmar.gc.ca/chsftp/patches/6035\\_6604793\\_1\\_202107120751.pdf](https://www.notmar.gc.ca/chsftp/patches/6035_6604793_1_202107120751.pdf)  
*DFO(6604793-01)*

**7010 - Davis Strait and/et Baffin Bay - New Edition - 12-JAN-1979 - Unknown**  
06-AUG-2021 LNMD. 15-NOV-2013  
Add underwater rock of unknown depth, dangerous to surface navigation, 65°10'00.0"N 052°31'00.0"W  
Rep (2021)  
(See Chart No. 1, K13)  
*DFO(6604788-01)*

**7011 - Hudson Strait/Détroit D'Hudson to/à Groenland - New Edition - 02-SEP-1983 - Unknown**  
06-AUG-2021 LNMD. 21-FEB-2020  
Add underwater rock of unknown depth, dangerous to surface navigation, 65°10'00.0"N 052°31'00.0"W  
Rep (2021)  
(See Chart No. 1, K13)  
*DFO(6604788-01)*

### **Section 3: Radio Aids to Marine Navigation Corrections**

---

No corrections for this section.

## Section 4: Sailing Directions and Small Craft Guide Corrections

---

ARC 402 — Eastern Arctic, First Edition, 2014 —

- Chapter 1 — Paragraph 128  
Delete : 5 fathoms (9.1 m)  
Replace by: 9.1 m (A2021-007.01)
- Chapter 1 — Paragraph 151  
Delete : 2-fathom (3.7-m)  
Replace by: 3.7-m (A2021-007.02)
- Chapter 1 — Paragraph 157  
Delete : 20 to 25 fathoms (37 to 46 m)  
Replace by: 37 to 46 m (A2021-007.03)
- Chapter 1 — Paragraph 161  
Delete : 36 fathoms (66 m)  
Replace by: 66 m (A2021-007.04)
- Chapter 1 — Paragraph 162  
Delete : 2 feet (0.6 m)  
Replace by: 0.4 m (A2021-007.05)
- Chapter 1 — Paragraph 174  
Delete : in 1951 and 1958  
Replace by: between 2003 and 2018 (A2021-007.06)
- Chapter 1 — Paragraph 182  
Delete : 4 feet (1.2 m)  
Replace by: 2.2 m (A2021-007.07)
- Chapter 1 — Paragraph 182  
Delete : 100 fathoms (183 m)  
Replace by: over 400 m (A2021-007.08)
- Chapter 1 — Paragraph 184  
Delete : 6 to 23 feet (1.83 m)  
Replace by: drying 0.5 m to 9.7 m (A2021-007.09)
- Chapter 1 — Paragraph 193  
Delete : **rock awash**  
Replace by: rock drying 0.5 m (A2021-007.10)
- Chapter 1 — Paragraph 201  
Delete : 1 fathom (1.8 m)  
Replace by: 2.8 m (A2021-007.11)

Chapter 1 — Paragraph 208 Delete : 10 to 15 fathoms (18.3 to 27.4 m) Replace by: 18.3 to 27.4 m	(A2021-007.12)
Chapter 1 — Paragraph 218 Delete : 6 fathoms (11 m) Replace by: 11.9 m	(A2021-007.13)
Chapter 1 — Paragraph 220 Delete : 3-foot (0.9-m) shoal 0.7 Replace by: 1.9-m shoal 0.9	(A2021-007.14)
Chapter 1 — Paragraph 221 Delete : 7 feet (2.1 m) Replace by: 3.1 m	(A2021-007.15)
Chapter 1 — Paragraph 228 Delete : An 8-fathom (14.6-m) Replace by: A 14.6-m	(A2021-007.16)
Chapter 1 — Paragraph 230 Delete : 30 fathoms (55 m) Replace by: 55 m	(A2021-007.17)
Chapter 1 — Paragraph 230 Delete: 6 fathoms (11 m) Replace by: 11 m	(A2021-007.18)
Chapter 1 — Paragraph 231 Delete: 1-fathom (1.8-m) Replace by: 1.8-m	(A2021-007.19)
Chapter 1 — Paragraph 246 Delete: 15-foot (4.6-m) Replace by: 4.5-m	(A2021-007.20)
Chapter 1 — Paragraph 247 Delete: An 18-foot (5.5-m) Replace by: A 5.4-m	(A2021-007.21)
Chapter 1 — Paragraph 249 Delete: 33 feet (10.1 m) Replace by: 10.1 m	(A2021-007.22)



Chapter 1 — Paragraph 252 Delete : 1950 and 1959 Replace by: 2003 and 2018	(A2021-007.23)
Chapter 1 — Paragraph 267 Delete : 30 fathoms (55 m) Replace by: 55 m	(A2021-007.24)
Chapter 1 — Paragraph 273 Delete : 2 fathoms (3.7 m) Replace by: 3.6 m	(A2021-007.25)
Chapter 1 — Paragraph 282 Delete : 4 feet (1.2 m) Replace by: 1.3 m	(A2021-007.26)
Chapter 1 — Paragraph 296 Delete : 20 fathoms (37 m) Replace by: 37 m	(A2021-007.27)
Chapter 1 — Paragraph 301 Delete : 7 fathoms (12.8 m) Replace by: 12.8 m	(A2021-007.28)
Chapter 1 — Paragraph 306 Delete : 7 fathoms (12.8 m) Replace by: 12.8 m	(A2021-007.29)

## **Section 5: List of Lights, Buoys and Fog Signals Corrections**

---

No corrections for this section.