



NOTICES TO MARINERS

EASTERN EDITION

Published monthly by the



CANADIAN COAST GUARD

CONTENTS

| | Page |
|---|---------|
| Section 1 Safety and General Information | 1 - 4 |
| Section 2 Chart Corrections..... | 5 - 21 |
| Section 3 Radio Aids to Marine Navigation Corrections | 22 |
| Section 4 Sailing Directions and Small Craft Guide Corrections..... | 23 - 28 |
| Section 5 Light List Corrections | 29 - 31 |

Marine Programs Directorate
Aids to Navigation



Internet: <http://www.notmar.com>

EXPLANATORY NOTES

Geographical positions refer directly to the graduations of the largest scale Canadian Hydrographic chart unless otherwise indicated.

Bearings refer to the true compass and are measured clockwise from 000° (North) clockwise to 359°; those relating to lights are from seaward.

Visibility of lights is that in clear weather.

Depths - The units used for soundings (metres, fathoms or feet) are stated in the title of each chart.

Elevations are normally given above Higher High Water, Large Tides unless otherwise indicated.

Distances may be calculated as follows:

| | |
|-----------------|-------------------------------|
| 1 nautical mile | = 1 852 metres (6,076.1 feet) |
| 1 statute mile | = 1 609.3 metres (5,280 feet) |
| 1 metre | = 3.28 feet |

Temporary & Preliminary Notices are indicated by a (T) or a (P) before the chart action. Please note that Nautical charts are not hand amended by the Canadian Hydrographic Service for Temporary (T) and Preliminary (P) Notices. It is recommended that mariners chart these corrections in pencil. Listing of charts affected by Temporary and Preliminary Notices are revised and promulgated quarterly under the *Cumulative chart correction list* published in Section 1 of the Monthly Edition.

Please note that, in addition to the temporary and preliminary changes normally advertised as (T) and (P) Notices, there are a significant number of permanent changes to navigational aids that have been advertised as Preliminary Notices to Mariners while charts are being updated for new editions.

Marine Information Report & Suggestion Sheet - Mariners are requested to notify the responsible authorities when new or suspected dangers to navigation are discovered, changes observed in aids to navigation or corrections to publications are seen to be necessary. Such communications can be made using the *Marine Information Report & Suggestion Sheet* inserted on the last page of each monthly edition of *Notices to Mariners*.

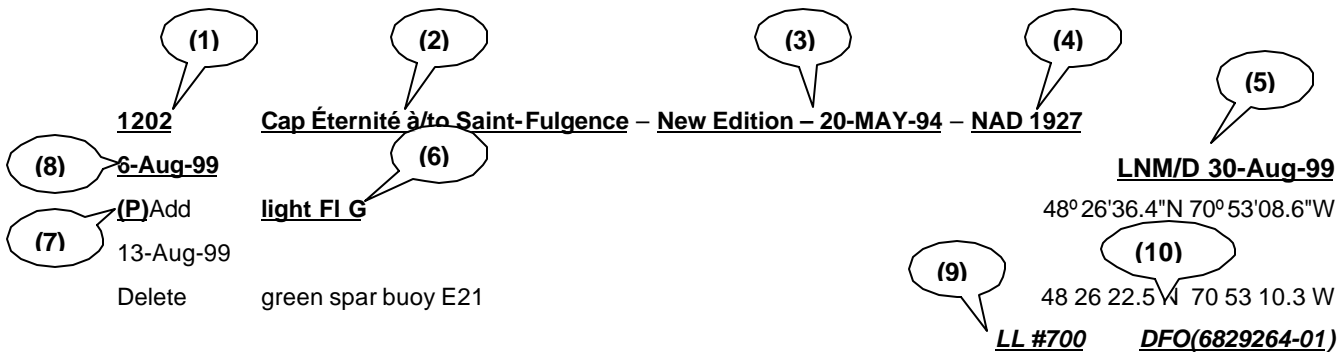
Monthly edition of Notices to Mariners - *Notices to Mariners* are issued free of charge on a monthly basis. Mariners now have a choice between specific *Regional* issue(s) they wish to receive. Requests to be placed on or removed from the mailing list should be made by using the form inserted on page *xiii* of each monthly edition. Notification of changes to the mailing addresses, regional issues and/or number of copies required should also be transmitted by means of this form.

Canadian Nautical Charts & Publications - A source list of *Canadian Nautical Charts & publications* is published in *Notice No. 14* of the current *Annual Edition of Notices to Mariners*. The source supply and the prices effective at the time of printing are listed. This list is periodically updated in the monthly edition of *Notices to Mariners*.

NOTE: Cette publication est aussi disponible en français.

CHART CORRECTIONS - SECTION 2

Corrections to nautical charts will be listed in numeric order by chart number. Each chart correction listed applies only to that particular chart. Related charts, if any, will have their own specific correction listed separately. Users should also refer to CHS Chart 1 Symbols, Abbreviations Terms for additional information pertaining to the correction of charts. The illustration below describes the elements that will comprise a typical Section 2 chart correction.



- 1 - Chart Number
- 2 - Chart Title
- 3 - Chart's latest New Edition date
- 4 - Horizontal Chart Datum
- 5 - Last Correction

- 6 - Chart action
- 7 - Notice type
- 8 - Weekly chart correction date
- 9 - List of light number
- 10 - Record reference number

The last correction number is identified with the **L**NM/D or **L**ast **N**otice to **M**ariners Number / **D**ate. This number is expressed in either old notice number format (ex.: 594/99) or in day-month-year format which is the date known as the weekly chart correction date shown in the above diagram as item (8).

ADVISORY

NOTICES TO SHIPPING (WRITTEN AND BROADCAST)

The Canadian Coast Guard is implementing a number of changes to the aids to navigation system in Canada.

These changes are advertised as Notices to Shipping (Broadcast and Written) by the Canadian Coast Guard and are followed up with Notices to Mariners, then charts are updated by hand correction, reprints or new editions.

The publication of Notices to Mariners and chart revisions are being delayed by the volume of changes that are taking place.

Mariners are advised that all relevant Written Notices to Shipping should be kept until superseded by Notices to Mariners or through revised charts issued by the Canadian Hydrographic Service.

Written Notices to Shipping are published weekly and are available from local Canadian Coast Guard Offices.

The Canadian Hydrographic Service is reviewing the impact of these changes with the Canadian Coast Guard and together we are preparing an action plan on the issuing of chart revisions.

For further information contact your local Canadian Coast Guard office.

Newfoundland

St. John's MCTS Centre
Phone: (709) 772-2083
Fax: (709) 772-6285

Maritimes

Maritimes Regional Operations Centre
Toll Free in Maritimes 1-800-565-1633
Phone: (902) 426-6030
Fax: (902) 426-6334
<http://www.mar.dfo.mpo.gc.ca/cg/ops/roc.htm>
Website E-Mail: ROCWeb@mar.dfo-mpo.gc.ca

Laurentian

Laurentian Regional Operations Centre GC\SO\COR
Operational Information Officer
Phone: (418) 648-5410
Fax: (418) 648-7244
E-Mail: OPSAVIS@dfo-mpo.gc.ca

Central & Arctic

Sarnia MCTS Centre
Toll Free in Ontario 1-800-265-0237
Phone: (519) 337-6360
Fax: (519) 337-2498

Pacific

Regional Marine Information Centre (RMIC)
Toll free in British Columbia – 1-800-889-8852
Phone: (604) 666-6011
Fax: (604) 666-8453
E-mail: RMIC-Pacific@pac.dfo-mpo.gc.ca
Notice to Shipping information
<http://www.pacific.ccg-gcc.gc.ca/epages/mcts/notship/notosh2.htm>

DGPS FULLY OPERATIONAL SERVICE

The Canadian Coast Guard (CCG) announces that the Differential Global Positioning Service (DGPS) Fully Operational Service (FOS) is available for positioning and navigation.

FOS means the service will provide a DGPS broadcast using the type 9 RTCM message for pseudorange corrections at a data transmission rate of 200 baud. Refer to Radio Aids to Marine Navigation (RAMN) for estimated advertised coverage for each differential station.

Users are also advised that differential corrections are based on the NAD 83 datum position of the reference station antenna and positions obtained using DGPS should be referenced to this coordinate system only. DGPS receivers must be set to the WGS 84 datum in order to obtain optimum positioning accuracy.

| Table of DGPS Reference Stations in Canada | | | | | | |
|---|--|--------------------------------|-----------------------|------------------|----------------------------|--------------|
| Station Name | Id. Nos of reference stations | DGPS Station ID | Geog. Position | | Frequency [khz] | Bit/s |
| | | | Latitude | Longitude | | |
| Cape Race, NFLD | 338,339 | 940 | 46 46 N | 53 11 W | 315 | 200 |
| Cape Ray, NFLD | 340,341 | 942 | 47 38 N | 59 14 W | 288 | 200 |
| Cape Norman, NFLD | 342,343 | 944 | 51 30 N | 55 49 W | 310 | 200 |
| Rigolet, NFLD | 344,345 | 946 | 54 15 N | 58 30 W | 299 | 200 |
| Partridge Island, NB | 326,327 | 939 | 45 14 N | 66 03 W | 295 | 200 |
| Pt. Escuminiac, NB | 332,333 | 936 | 47 04 N | 64 48 W | 319 | 200 |
| Fox Island, NS | 336,337 | 934 | 45 20 N | 61 05 W | 307 | 200 |
| Western Head, NS | 334,335 | 935 | 43 59 N | 64 40 W | 312 | 200 |
| Hartlen Point, NS (Tentative October 2000) | 330,331 | 937 | 44 35 N | 63 27 W | 298 | 200 |
| St.-Jean-sur-Richelieu, QC | 312,313 | 929 | 45 19 N | 73 19 W | 296 | 200 |
| Lauzon, QC | 316,317 | 927 | 46 49 N | 71 10 W | 309 | 200 |
| Rivière-du-Loup, QC | 318,319 | 926 | 47 46 N | 69 36 W | 300 | 200 |
| Moisie, QC | 320,321 | 925 | 50 12 N | 66 07 W | 313 | 200 |
| Trois-Rivières, QC | 314,315 | 928 | 46 23 N | 72 27 W | 321 | 200 |
| Warton, ON | 310,311 | 918 | 44 45 N | 81 07 W | 286 | 200 |
| Cardinal, ON | 308,309 | 919 | 44 47 N | 75 25 W | 306 | 200 |
| Alert Bay, BC | 300,301 | 909 | 50 35 N | 126 55 W | 309 | 200 |
| Amphitrite Pt., BC | 302,303 | 908 | 48 55 N | 125 33 W | 315 | 200 |
| Richmond, BC | 304,305 | 907 | 49 11 N | 123 07 W | 320 | 200 |
| Sandspit, BC | 306,307 | 906 | 53 14 N | 131 49 W | 300 | 200 |

DGPS RECEIVER – WARNING

The Canadian Coast Guard's Differential Global Positioning System (DGPS) broadcast contains built in health information designed to alert a DGPS user receiver of an out of tolerance or fault condition. During testing, it was found that some user DGPS receivers did not process the health information properly. Improper processing by a user equipment can result in incorrect positions.

Please contact your DGPS manufacturer or supplier to ensure that your receiver is capable of processing the DGPS Reference Station Health information correctly.

DGPS USER ALERT

The Canadian Coast Guard received reports in March 97 of DGPS receivers apparently ignoring the broadcast alarm which should signal the immediate discontinuation of a particular satellite correction. Reports indicate that some user equipment does not properly recognize this “do-not-use” correction flag and as a result erroneously processes it as a correction. This can result in position errors as large as 15 kilometers while the receiver is in DGPS mode. DGPS users are advised that they should contact the manufacturer of their equipment immediately to determine if they require a receiver upgrade.

DGPS station anomaly report / Rapport d'anomalie des stations DGPS

With the purpose of constantly evaluating the quality of the DGPS service offered, the Canadian Coast Guard is providing the mariner with the following anomaly report. This report will allow us to get well-supported information concerning the anomaly and thus, will facilitate the identification of the origin of the problem. Please fill accordingly each section of this report and forward it by the suggested ways. You will find a legend at the end of this document.

Avec le souci d'évaluer constamment la qualité du service DGPS offert, la Garde côtière met à la disposition du navigateur le présent rapport d'anomalie. Ce rapport servira à bien documenter l'anomalie et, de ce fait, facilitera l'identification ou la recherche de la source du problème. Nous vous prions de bien remplir chaque section de ce rapport et de l'acheminer de la façon suggérée. Vous trouverez une légende à la fin de ce document.

User informations / Renseignements sur l'utilisateur

Vessel name / Nom du navire: _____ Destination: _____

Vessel position at the beginning of the anomaly /
Position du navire au début de l'anomalie : _____

Vessel position at the end of the anomaly /
Position du navire à la fin de l'anomalie : _____

Anomaly report / Rapport d'anomalie

Date and time of the anomaly / Date et heure de l'anomalie: _____ Duration / Durée: _____

Number of satellites tracked on GPS receiver / Nombre de satellites reçu par le récepteur: _____

DGPS site using / Station DGPS utilisée: Freq.: _____ kHz SS: _____ dB SNR: _____ dB

DOP Geometry / Géométrie DOP : _____

User receiver operates correctly with other DGPS sites? /

Votre équipement DGPS fonctionne-t-il normalement à l'utilisation d'autres stations DGPS?: Yes/ Oui ___ No / Non ___

Comments / Commentaires: _____

Point of contact / Personne-ressource: Name/ Nom: _____

Phone / Téléphone : _____

Weather conditions / Conditions météo

Winds / Vents : Direction: _____ Speed / Vitesse: _____ KTS

Temp. °C: _____ VIS: _____ N.M.

Sea State / État de la mer : _____

Bearing and range to electrical storm /

Direction et distance de l'orage : _____

Time of the storm / Heure de l'orage: _____ UTC

Essential informations on user equipment to fill / Renseignements indispensables sur l'équipement à remplir:

User equipment informations / Renseignements sur l'équipement

GPS receiver / Récepteur GPS: Make / Fabricant: _____ Model: _____

DGPS beacon receiver / Démodulateur DGPS: Make / Fabricant : _____ Model: _____

Gyro interface with GPS / Gyro intégré avec le GPS? Yes / Oui : _____ No / Non : _____

DGPS interfaced with an ECDIS / DGPS intégré dans un SVCEI? Yes / Oui: _____ No / Non : _____

If yes, please fill below / Si oui, S.V.P. compléter ci-dessous:

ECDIS / SVCEI: Make / Fabricant: _____ Model: _____

Radar image interfaced / Image radar intégrée?: Yes / Oui: _____ No / Non: _____

Gyro interfaced with ECDIS / Gyro intégré avec SVCEI? Yes / Oui: _____ No / Non: _____

Permanent installation or in evaluation / Installation permanente ou en évaluation : _____

This report can be sent the following ways / Ce rapport peut être acheminé selon les façons suivantes:

1) Fax / Par télécopieur : 613-998-8428 attention Aids to Navigation

2) Mail / Par la poste: Director, Navigation Systems Branch
Department of Fisheries and Oceans
200 Kent Street, Station 5130
Ottawa, ON
K1A 0E6

Directeur, Direction des systèmes à la navigation maritimes
Ministère des Pêches et Océans
200, rue Kent, Station 5130
Ottawa, ON
K1A 0E6

Canada

Legend/Légende

- Position** : Position can be provided by latitude, longitude, bearing and distance, location of a buoy, etc.
La position peut être donnée en latitude, longitude, relèvement et distance, emplacement de bouée, etc.
- KTS** : Wind speed in knots / Vitesse du vent en noeuds.
- N.M.** : Visibility in Nautical Miles / Visibilité en milles nautiques.
- Freq. kHz** : Frequency in kilohertz / Fréquence en kilohertz .
- SS** : Signal strength in decibel / Force de signal en décibel.
- SNR** : Signal to noise ratio in decibel / Rapport signal-bruit en décibel .
- DOP (dilution of precision)** : Measure of the geometrical «strength » of the GPS satellite configuration. The DOP is measured on a scale of 1 to 10 / Mesure de la « force » géométrique de la configuration satellite. Le DOP est mesuré sur une échelle de 1 à 10
- SVCEI / ECDIS** : Electronic Chart Display and Information System / Système de Visualisation de Cartes Electroniques et d'Information .

MONTHLY EDITION OF NOTICES TO MARINERS

MAILING LIST CHANGES

Superintendent, Information and Publications
Navigation Aids
Navigation Systems Branch
Canadian Coast Guard
Department of Fisheries and Oceans
Ottawa, ON
K1A 0E6

Telephone - (613) 990-3037
Facsimile - (613) 998-8428

Please indicate which edition you would like to receive.

EASTERN EDITION (will be comprised of Arctic, Newfoundland, Maritimes, Gulf & River St. Lawrence and Central areas) _____

WESTERN EDITION (will be comprised of Arctic and Pacific areas) _____

ADD _____ **AMEND** _____ **REMOVE** _____ **NO. OF COPIES** _____

| OLD ADDRESS | |
|-------------|-------------|
| NAME | |
| STREET | APT |
| CITY | POSTAL CODE |
| PROVINCE | COUNTRY |
| NEW ADDRESS | |
| NAME | |
| STREET | APT |
| CITY | POSTAL CODE |
| PROVINCE | COUNTRY |
| | |

ID number above address on label

or

Attach complete address label to this sheet

INDEX

| | |
|--|-----------|
| CANADIAN HYDROGRAPHIC SERVICE - Charts..... | 1 |
| - Cumulative chart edition dates. | 2 |
| - Electronic Navigation Charts. | 1 |
| - Special Announcement. | 4 |
| CANADIAN COAST GUARD PUBLICATIONS - Amendment to the Radio Aids to Marine Navigation (Atlantic, St. Lawrence, Great Lakes, Lake Winnipeg and Eastern Arctic) Publication - 2001. | 22 |
| NOVA SCOTIA, SOUTHWEST COAST - HALIFAX HARBOUR - NORTHWEST ARM - Light buoy to be discontinued..... | 4 |
| ST. LAWRENCE RIVER - GRANDE RIVIÈRE HARBOUR - Range lights to be discontinued. | 4 |

NUMERICAL INDEX OF CANADIAN CHARTS AFFECTED

| Chart No. | Page | Chart No. | Page | Chart No. | Page |
|------------------|-------------|------------------|-------------|------------------|-------------|
| 1220 | 5 | L/C4013 | 11 | 6211 | 20 |
| 1234 | 1,5 | L/C4016 | 11 | 6212 | 20 |
| LC1236 | 5 | L/C4020 | 11 | 6215 | 21 |
| 1312 | 5 | 4047 | 11,12 | 6216 | 21 |
| 1315 | 5,6 | 4124 | 12 | 6218 | 21 |
| 1316 | 6 | 4130 | 12 | 6240 | 21 |
| 1317 | 1,6,7 | 4142 | 12-16 | 6243 | 21 |
| 1350 | 7 | 4202 | 16,17 | 6251 | 21 |
| 1434 | 7 | L/C4233 | 17 | | |
| 1435 | 7,8 | 4307 | 17 | | |
| 1436 | 8 | L/C4321 | 17 | | |
| 2022 | 8 | L/C4335 | 17 | | |
| 2029 | 1 | 4416 | 17,18 | | |
| 2050 | 8 | L/C4485 | 18 | | |
| 2085 | 8 | 4616 | 18 | | |
| L/C2100 | 8 | 4624 | 18 | | |
| L/C2123 | 8,9 | 4633 | 18 | | |
| 2181 | 9 | 4634 | 18 | | |
| L/C2200 | 9,10 | 4667 | 18 | | |
| 2204 | 10 | 4668 | 18 | | |
| 2205 | 1 | 4858 | 18,19 | | |
| L/C2228 | 10 | L/C4952 | 19 | | |
| 2251 | 10,11 | 4954 | 20 | | |
| 2297 | 11 | 6100 | 1,20 | | |
| L/C4010 | 11 | 6201 | 20 | | |

**SECTION 1 – Edition 08/2001
SAFETY AND GENERAL INFORMATION**

CANADIAN HYDROGRAPHIC SERVICE - Charts.

| CHARTS | MAIN TITLE | SCALE | PUBLISHED | CAT# | PRICE |
|--------------------|--|----------|-----------|------|---------|
| New Edition | | | | | |
| 6100 | Lac Saint-Jean | 1:00 | 30-Mar-01 | 1 | \$28.00 |
| Reprints | | | | | |
| 1234 | Cap de la Tête au Chien àto Cap aux Oies Note: This chart incorporates and cancels Notice 1119(P)/99 and chart actions dated 2001-02-09 numbered DFO(6406119 and 6406141) | 1:80:000 | 25-May-01 | 1 | \$20.00 |
| 1317 | Sault-au-Cochon àto Québec Note: This chart incorporates and cancels Notice 1513(P)/99 and chart action dated 2001-02-16 numbered DFO(6406179) | 1:50:000 | 17-Aug-01 | 1 | \$20.00 |
| 2029 | Couchiching Lock to Port Severn/Écluse de Couchiching àPort Severn | 1:20:000 | 15-Jun-01 | 3 | \$18.00 |
| 2205 | Killarney to/àLittle Current Note: This chart is still affected by Notice 115(P)/94. | 1:40:000 | 11-May-01 | 3 | \$12.00 |

CANADIAN HYDROGRAPHIC SERVICE - Electronic Navigation Charts.

Notes:(1) The following ENC products are only available from:

**Nautical Data International Inc.
P.O. Box 127, Station C
St. John's, Newfoundland
A1C 5H5
Telephone: 1-800-563-0634 or 1-709-576-0634
Facsimile: 709-576-0636**

**(2) For licence information and rates please contact the distributor,
Nautical Data International Inc. (NDI) at the above-mentioned address.**

RELEASED PRODUCTS

| S-57 ENC NUMBER | CHART TITLE |
|-----------------|--|
| CA373064 | Port Hope to Port Darlington |
| CA373067 | Oiseau Bay to Bottle Point |
| CA373281 | Cape Hurd to/àLonely Island |
| CA476285 | Canso Lock to St.Georges Bay/Écluse de Canso àSt.Georges Bay |
| CA576305 | Channel Port-Aux Basques |
| CA476520 | Paradise Sound |
| CA476805 | Presque Harbour to Bar Haven Island and Paradise Sound |
| CA476806 | Presque Harbour to Bar Haven Island and Paradise Sound |
| CA570125 | Prince Rupert Harbour |
| CA570223 | Port Neville |
| CA570224 | Chatham Channel |
| CA473025 | Grindstone Island to/àCarleton Island |
| CA373091 | Lake Ontario/Lac Ontario, Western Portion/Partie ouest |
| CA376015 | Motion Bay to/àCape St Francis |
| CA576060 | Cape St. Marys |
| CA576096 | International Piers |
| CA576097 | North Sydney |
| CA576098 | Sydney River |
| CA576100 | Sydport |
| CA576142 | Baddeck Harbour |
| CA476215 | Epinette Point to Terrington Basin |
| CA276284 | Sydney to Saint-Pierre |
| CA576416 | Carbonear - Public Wharf/Quai |
| CA476495 | Continuation A - Sandwich Bay |
| CA576498 | Cartwright Harbour |

**SECTION 1 – Edition 08/2001
SAFETY AND GENERAL INFORMATION**

CANADIAN HYDROGRAPHIC SERVICE - Cumulative chart edition dates.

The accompanying correction list is a cumulative listing of charts affected by Notices to Mariners from 28-MAY-2001 to 31-AUG-2001.

| Chart No. | Notices to Mariners Edition Date |
|------------------|--|
| 1220 | 03-AUG-2001 |
| 1233 | 08-JUN-2001 |
| 1234 | (P)31-AUG-2001, (T)31-AUG-2001, (25-MAY-2001 New Edition Advertised) |
| L/C1236 | 10-AUG-2001, 08-JUN-2001, (T)08-JUN-2001 |
| 1310 | 13-JUL-2001, 15-JUN-2001, 08-JUN-2001 |
| 1311 | 13-JUL-2001, 06-JUL-2001, 15-JUN-2001 |
| 1312 | 10-AUG-2001, 15-JUN-2001 |
| 1313 | (T)29-JUN-2001 |
| 1315 | 10-AUG-2001 |
| 1316 | 03-AUG-2001, 15-JUN-2001 |
| 1317 | (P)31-AUG-2001, (17-AUG-2001 New Edition Advertised) |
| 1350 | 10-AUG-2001, 03-AUG-2001, 15-JUN-2001 |
| 1410 | 08-JUN-2001 |
| 1432 | 08-JUN-2001 |
| 1434 | (P)03-AUG-2001 |
| 1435 | (P)03-AUG-2001 |
| 1436 | (P)03-AUG-2001 |
| 1437 | 13-JUL-2001 |
| 1438 | 13-JUL-2001, 08-JUN-2001 |
| 1513 | 06-JUL-2001 |
| 1553 | (P)29-JUN-2001, (16-FEB-2001 New Edition Advertised) |
| 1555 | (25-MAY-2001 New Edition Advertised) |
| L/C2000 | 13-JUL-2001 |
| 2011 | 22-JUN-2001 |
| 2022 | 24-AUG-2001, 13-JUL-2001 |
| 2023 | 13-JUL-2001 |
| 2024 | 13-JUL-2001 |
| 2025 | 13-JUL-2001 |
| 2026 | 13-JUL-2001 |
| 2028 | 13-JUL-2001 |
| 2029 | 13-JUL-2001, (15-JUN-2001 New Edition Advertised) |
| 2042 | 20-JUL-2001, 13-JUL-2001 |
| 2043 | 13-JUL-2001 |
| 2050 | 24-AUG-2001 |
| 2064 | 13-JUL-2001 |
| 2067 | (15-JUN-2001 New Edition Advertised) |
| L/C2077 | (P)06-JUL-2001 |
| 2077 | (P)15-JUN-2001 |
| 2085 | 03-AUG-2001, 13-JUL-2001, (P)06-JUL-2001, (P)15-JUN-2001 |
| 2086 | (P)06-JUL-2001, (P)15-JUN-2001 |
| L/C2100 | 17-AUG-2001 |
| L/C2110 | (P)03-AUG-2001, 01-JUN-2001 |
| L/C2120 | 13-JUL-2001, 01-JUN-2001 |
| L/C2123 | 10-AUG-2001, (P)10-AUG-2001 |
| 2181 | (P)03-AUG-2001 |
| L/C2200 | 17-AUG-2001, (P)17-AUG-2001 |
| L/C2201 | 27-JUL-2001 |
| 2204 | 24-AUG-2001, (23-FEB-2001 New Edition Advertised) |
| 2205 | (11-MAY-2001 New Edition Advertised) |
| L/C2228 | 24-AUG-2001, 01-JUN-2001 |
| 2241 | 06-JUL-2001 |
| 2251 | 17-AUG-2001 |
| 2261 | 01-JUN-2001 |
| L/C2282 | 01-JUN-2001 |
| 2297 | 17-AUG-2001 |
| L/C4001 | 27-JUL-2001 |
| 4003 | 27-JUL-2001, 20-JUL-2001 |
| L/C4006 | 27-JUL-2001 |
| L/C4010 | 17-AUG-2001, 22-JUN-2001 |
| 4011 | 20-JUL-2001 |

**SECTION 1 – Edition 08/2001
SAFETY AND GENERAL INFORMATION**

| Chart No. | Notices to Mariners Edition Date |
|------------------|---|
| L/C4013 | 24-AUG-2001 |
| L/C4015 | 22-JUN-2001, 15-JUN-2001 |
| L/C4016 | 10-AUG-2001, 22-JUN-2001 |
| L/C4020 | 03-AUG-2001 |
| L/C4023 | 20-JUL-2001, 06-JUL-2001, 22-JUN-2001 |
| L/C4045 | 22-JUN-2001, 15-JUN-2001 |
| 4047 | 10-AUG-2001, 22-JUN-2001 |
| L/C4098 | 15-JUN-2001 |
| 4114 | 27-JUL-2001 |
| L/C4116 | 27-JUL-2001, 20-JUL-2001 |
| L/C4118 | 06-JUL-2001 |
| 4124 | (T)31-AUG-2001 |
| 4130 | 17-AUG-2001 |
| 4140 | 22-JUN-2001 |
| 4141 | 13-JUL-2001 |
| 4142 | 31-AUG-2001, 24-AUG-2001 |
| 4202 | 10-AUG-2001 |
| L/C4233 | 24-AUG-2001 |
| 4236 | 06-JUL-2001 |
| L/C4240 | 20-JUL-2001 |
| L/C4241 | 20-JUL-2001 |
| 4245 | 20-JUL-2001 |
| 4307 | 24-AUG-2001 |
| 4308 | 20-JUL-2001 |
| L/C4321 | 24-AUG-2001 |
| L/C4335 | 24-AUG-2001 |
| 4340 | 20-JUL-2001 |
| 4376 | 20-JUL-2001 |
| 4394 | 13-JUL-2001 |
| 4395 | 13-JUL-2001 |
| 4396 | 06-JUL-2001 |
| 4416 | (P)03-AUG-2001, (T)08-JUN-2001 |
| 4425 | 22-JUN-2001, (T)22-JUN-2001 |
| 4437 | 13-JUL-2001 |
| 4443 | 06-JUL-2001 |
| 4445 | 29-JUN-2001 |
| L/C4464 | 27-JUL-2001 |
| L/C4485 | 17-AUG-2001, (T)08-JUN-2001 |
| 4497 | 13-JUL-2001 |
| 4498 | 06-JUL-2001, (T)06-JUL-2001 |
| 4591 | 15-JUN-2001 |
| 4593 | 15-JUN-2001 |
| 4594 | 08-JUN-2001 |
| 4595 | 27-JUL-2001 |
| 4616 | 10-AUG-2001 |
| 4624 | 10-AUG-2001 |
| L/C4625 | 22-JUN-2001 |
| L/C4626 | 22-JUN-2001 |
| 4633 | 03-AUG-2001, 15-JUN-2001 |
| 4634 | 10-AUG-2001, 15-JUN-2001 |
| 4635 | 15-JUN-2001, 01-JUN-2001 |
| 4637 | 15-JUN-2001 |
| 4639 | 01-JUN-2001 |
| 4640 | 08-JUN-2001, 01-JUN-2001 |
| 4641 | 01-JUN-2001 |
| 4643 | 22-JUN-2001 |
| 4644 | 08-JUN-2001 |
| 4667 | 10-AUG-2001 |
| 4668 | 03-AUG-2001 |
| 4830 | 01-JUN-2001 |
| 4858 | 03-AUG-2001 |
| 4886 | 08-JUN-2001 |
| 4905 | 20-JUL-2001 |
| 4911 | 27-JUL-2001 |
| L/C4951 | 15-JUN-2001 |
| L/C4952 | (T)17-AUG-2001, 15-JUN-2001 |

**SECTION 1 – Edition 08/2001
SAFETY AND GENERAL INFORMATION**

| Chart No. | Notices to Mariners Edition Date |
|------------------|---|
| 4954 | (T)17-AUG-2001, (P)29-JUN-2001 |
| 5031 | 29-JUN-2001 |
| 5052 | 22-JUN-2001 |
| 6021 | 06-JUL-2001 |
| 6022 | 13-JUL-2001 |
| 6100 | (P)31-AUG-2001, (30-MARS-2001 New Edition Advertised) |
| 6201 | 17-AUG-2001 |
| 6211 | 17-AUG-2001 |
| 6212 | 17-AUG-2001, 01-JUN-2001 |
| 6214 | 13-JUL-2001 |
| 6215 | 17-AUG-2001 |
| 6216 | 17-AUG-2001 |
| 6218 | 17-AUG-2001, 01-JUN-2001 |
| 6240 | 31-AUG-2001 |
| 6243 | 24-AUG-2001 |
| 6251 | 31-AUG-2001 |
| L/C8007 | 15-JUN-2001 |

CANADIAN HYDROGRAPHIC SERVICE - Special Announcement.

Since May 1, 2001, the Canadian Hydrographic Service Chart Sales and Distribution office located at 1675 Russell Rd., Ottawa, Ontario, no longer offers a retail sales service.

Retail sales, including walk-in, phone, fax and e-mail orders, are now directed to our dealer network.

Please note that orders will only be sent to CHS dealers - Shipments to third parties will not be accepted.

If you require further information, please phone (613) 998-4931.

ST. LAWRENCE RIVER - GRANDE RIVIÈRE HARBOUR - Range lights to be discontinued.

The Canadian Coast Guard proposes to permanently discontinue the Grande-Rivière Harbour range lights (L.L. 1400.4, 1400.5) (48°23'34.4" N 64°29 '32.7" W approx.) on December 1st 2001. To compensate, daymarks will be established on the outer end of the breakwaters.

Comments on this action are solicited from mariners and other interested parties and should be directed to the Superintendent, Aids to Navigation, Canadian Coast Guard, 101 Champlain Blvd., Québec, Québec, G1K 7Y7, Telephone: (418) 648-3574, Facs: (418) 649-6690 within three months from the date of publication of this notice. Any objections raised must state the facts on which they are based and should include supporting information on safety, commerce and public benefit.

NOVA SCOTIA, SOUTHWEST COAST - HALIFAX HARBOUR - NORTHWEST ARM - Light buoy to be discontinued.

The Canadian Coast Guard proposes to permanently discontinue the following aid to navigation:

Chart 4203

Control light buoy (L.L. 531.8) (44°37' 03.3" N 63° 34' 21.6" W).

Comments on this action are solicited from mariners and other interested parties and should be directed to the Superintendent, Aids to Navigation, Canadian Coast Guard - Fundy Zone, P.O. Box 7730, Station A, Saint-John, N.B. E2L 4X6, Telephone: (506) 636-4703, within three months from the date of publication of this notice. Any objections raised must state the facts on which they are based and should include supporting information on safety, commerce and public benefit.

**SECTION 2 – Edition 08/2001
CHART CORRECTIONS**

1220 - Pointe Noire - New Edition - 28-FEB-1997 - NAD 1983

03-AUG-2001

Add sector light FRWG Priv visible over an arc of 22°30'.
Red from 202°41'47" to 206°56'47"
ALRW from 206°56'47" to 210°56'47".
White from 210°56'47" to 216°56'47".
ALGW from 216°56'47" to 220°56'47"
Green from 220°56'47" to 225°11'47".

LNMD. 01-DEC-2000
50°09'47.1"N 066°29'12.3"W

(CCG-L01-044) LL(1672.1) DFO(6406294-01)

1234 - Cap-à-l'Aigle - New Edition - 24-JUL-1998 - NAD 1983

31-AUG-2001

CANCELS legend Ru

47°39'41.6"N 070°05'47.8"W

This chart action is cancelled by the publication of the New Edition of chart 1234.

DFO(6406119-01)

CANCELS depth of 4 metres 7 decimetres

47°39'44.2"N 070°05'44.3"W

This chart action is cancelled by the publication of the New Edition of chart 1234.

DFO(6406141-01)

CANCELS depth of 5 metres with depth of 4 metres 8 decimetres

47°39'43.5"N 070°05'45.8"W

This chart action is cancelled by the publication of the New Edition of chart 1234.

DFO(6406141-03)

CANCELS depth of 19 metres 7 decimetres

47°39'37.3"N 070°05'39.6"W

This chart action is cancelled by the publication of the New Edition of chart 1234.

DFO(6406141-04)

1234 - Pointe de la Rivière du Loup - New Edition - 24-JUL-1998 - NAD 1983

31-AUG-2001

CANCELS 4 metres 7 decimetres

47°50'52.5"N 069°34'15.6"W

This chart action is cancelled by the publication of the New Edition of chart 1234.

DFO(6403264-01)

L/C1236 - Pointe des Monts aux/to Escoumins - New Edition - 25-SEP-1998 - NAD 1983

10-AUG-2001

Replace SADO/ODAS buoy marked IML-A with a yellow, pillar light buoy
FI(5) Y, marked IML-3

LNMD. 08-JUN-2001
48°39'36.0"N 068°09'23.4"W

(CCG-L01-043) LL(1707.1) DFO(6406293-01)

1312 - Lac Saint-Pierre - New Edition - 02-APR-1999 - NAD 1983

10-AUG-2001

Add red light, starboard hand spar buoy FI R, marked SH20 Priv

LNMD. 15-JUN-2001
46°12'48.0"N 072°55'07.0"W
(L2001-060) LL(2147.6) DFO(6406314-01)

1315 - Québec à/to Donnacona - New Edition - 19-MAY-2000 - NAD 1983

10-AUG-2001

Add yellow cautionary spar buoy, marked Priv

LNMD. 27-APR-2001
46°40'06.5"N 071°34'26.6"W
(L2001-067) DFO(6406321-01)

**SECTION 2 – Edition 08/2001
CHART CORRECTIONS**

Add outfall pipe between 46°39'56.9"N 071°34'28.1"W
and 46°40'06.5"N 071°34'26.6"W
DFO(6406321-02)

Add crib wich covers and uncovers, with drying height of 2 metres and 1
decimetre 46°40'06.5"N 071°34'26.6"W
DFO(6406321-03)

1316 - Continuation A - New Edition - 26-FEB-1999 - NAD 1983

03-AUG-2001 LNMD. 15-JUN-2001
Amend Iso G to read Iso G 2s against the light 46°44'44.2"N 071°17'16.2"W
DFO(6406273-03)

Amend Iso G to read Iso G 2s against the light 46°44'44.0"N 071°17'17.0"W
DFO(6406273-04)

1316 - Port de Québec - New Edition - 26-FEB-1999 - NAD 1983

03-AUG-2001 LNMD. 15-JUN-2001
Delete white and orange, information barrel light buoy FI Y, marked
Marina, Priv 46°46'56.0"N 071°13'54.0"W
DFO(6406273-01)

Amend FI R 8m 14M to read FI R 5s 8m 16M against the light 46°46'19.4"N 071°14'35.9"W
DFO(6406273-02)

Reposition tower from 46°48'41.9"N 071°09'36.3"W
to 46°48'41.9"N 071°09'35.3"W
DFO(6406273-05)

Reposition light from 46°49'55.3"N 071°09'55.7"W
to 46°49'55.8"N 071°09'55.1"W
DFO(6406273-06)

Add white and orange, information pillar light buoy FI Y, marked Marina,
Priv 46°46'56.1"N 071°13'52.3"W
DFO(6406273-07)

1317 - Sault-au-Cochon à Pointe de la Durantaye - New Edition - 15-JAN-1999 - NAD 1983

31-AUG-2001
CANCELS depth of 0 metre 3 decimetres 47°03'03.4"N 070°45'22.2"W

This chart action is cancelled by the publication of the New Edition
of chart 1317.
(L1999-2782) DFO(6406179-01)

CANCELS depth of 1 metre 8 decimetres 47°03'07.2"N 070°45'18.3"W

This chart action is cancelled by the publication of the New Edition
of chart 1317.
(L1999-2782) DFO(6406179-02)

CANCELS depth of 5 metres 47°03'03.1"N 070°45'08.2"W

This chart action is cancelled by the publication of the New Edition
of chart 1317.
DFO(6406179-03)

CANCELS depth of 3 metres 2 decimetres 47°03'12.4"N 070°45'41.6"W

This chart action is cancelled by the publication of the New Edition
of chart 1317.
(L1999-2782) DFO(6406179-04)

**SECTION 2 – Edition 08/2001
CHART CORRECTIONS**

1317 - Continuation A - New Edition - 15-JAN-1999 - NAD 1983

31-AUG-2001

CANCELS obstruction and legend "Obstrn"

46°50'42.0"N 071°06'54.0"W

This chart action is cancelled by the publication of the New Edition of chart 1317.

DFO(6020353-01)

1350 - Ruisseau Lahaise à/to Saint-Antoine-sur-Richelieu - Sheet 2 - New Chart - 06-JUL-1984 - NAD 1927

03-AUG-2001

Add yellow cautionary pillar light buoy FI Y, marked DAN-Y, Priv

LNMD. 15-JUN-2001

45°51'39.9"N 073°08'51.5"W

(L2001-082) LL(2204.59) DFO(6406339-01)

10-AUG-2001

Add yellow cautionary pillar light buoy FI Y, marked DAN-X, Priv

LNMD. 03-AUG-2001

45°51'38.6"N 073°08'54.0"W

(L2001-083) LL(2404.6) DFO(6406340-01)

Delete yellow cautionary cylindrical buoy

45°51'38.0"N 073°08'53.4"W

DFO(6406340-02)

1350 - Écluse/Lock Saint-Ours - Sheet 2 - New Chart - 06-JUL-1984 - NAD 1927

03-AUG-2001

Add yellow cautionary pillar light buoy FI Y, marked DAN-Y, Priv

LNMD. 15-JUN-2001

273°, 296m of corner S-E inset.

(L2001-082) LL(2204.59) DFO(6406339-01)

1434 - Compartment A-B - New Chart - 01-MAR-1996 - NAD 1983

03-AUG-2001

(P)Amend "FI R" to read "FI R 2.5s 9m" against light

LNMD. (1504-1999)

44°57'40.5"N 074°57'52.0"W

This information will be incorporated in the next New Edition of this chart.

LL(INL227) DFO(6601536-01)

(P)Amend "FI G" to read "FI G 2.5s 9m" against light

44°57'33.5"N 074°58'01.0"W

This information will be incorporated in the next New Edition of this chart.

LL(INL228) DFO(6601536-02)

(P)Amend "FI G" to read "FI G 2.5s 9m" against light

44°55'33.5"N 075°05'43.0"W

This information will be incorporated in the next New Edition of this chart.

LL(INL241) DFO(6601536-03)

1434 - Compartment B-C - New Chart - 01-MAR-1996 - NAD 1983

03-AUG-2001

(P)Amend "FI G" to read "FI G 2.5s 9m" against light

LNMD. (1504-1999)

44°47'57.0"N 075°20'46.0"W

This information will be incorporated in the next New Edition of this chart.

LL(INL287) DFO(6601536-04)

1435 - Cardinal to Whaleback Shoal - New Chart - 15-DEC-1995 - NAD 1983

03-AUG-2001

(P)Amend "FI R" to read "FI R 2.5s 9m" against light

LNMD. (532-1999)

44°30'22.0"N 075°46'23.0"W

This information will be incorporated in the next New Edition of this chart.

LL(INL343) DFO(6601531-01)

**SECTION 2 – Edition 08/2001
CHART CORRECTIONS**

(P)Amend "FI G" to read "FI G 2.5s 9m" against light 44°28'34.0"N 075°46'51.5"W
This information will be incorporated in the next New Edition of this chart.

LL(INL347) DFO(6601531-02)

1436 - Whaleback Shoal to/au Summerland Group - New Chart - 15-JAN-1993 - NAD 1983

03-AUG-2001 LNM/D. 10-NOV-2000
(P)Amend "FI R" to read "FI R 2.5s 9m" against light 44°30'22.0"N 075°46'23.0"W
LL(INL343) DFO(6601531-01)

(P)Amend "FI G" to read "FI G 2.5s 9m" against light 44°28'34.0"N 075°46'51.5"W
LL(INL347) DFO(6601531-02)

2022 - Bensfort Bridge to/à Peterborough - Sheet 3 - New Edition - 02-AUG-1996 - NAD 1927

24-AUG-2001 LNM/D. 13-JUL-2001
Delete green port hand spar buoy marked C19 44°11'08.0"N 078°20'11.0"W
(B2001-140) DFO(6601616-01)

2050 - Oshawa Harbour - New Chart - 10-MAY-1985 - NAD 1927

24-AUG-2001 LNM/D. 20-APR-2001
Replace red starboard hand spar buoy, marked MV8 with red starboard hand spar light buoy FI R marked MV8 Priv 43°51'52.4"N 078°49'17.5"W
(B2001-134) LL(503.1) DFO(6601590-01)

Replace red starboard hand spar buoy, marked MV10 with red starboard hand spar light buoy FI R marked MV10 Priv 43°51'55.0"N 078°49'19.5"W
(B2001-135) LL(503.2) DFO(6601591-01)

Replace red starboard hand spar buoy, marked MV12 with red starboard hand spar light buoy FI R marked MV12 Priv 43°51'57.6"N 078°49'21.2"W
(B2001-136) LL(503.3) DFO(6601592-01)

2085 - Toronto Harbour - New Edition - 18-FEB-2000 - NAD 1983

03-AUG-2001 LNM/D. 13-JUL-2001
Add white and orange, information pillar light buoy FI Y, marked WKO 11 43°37'46.5"N 079°24'18.5"W
(B2001-130) LL(513.65) DFO(6601583-01)

Add white and orange, information pillar light buoy FI Y, marked WKO 12 43°37'34.1"N 079°24'45.1"W
(B2001-131) LL(513.7) DFO(6601584-01)

Add white and orange, information pillar light buoy FI Y, marked EKO 15 43°37'59.1"N 079°22'49.6"W
(B2001-132) LL(517.15) DFO(6601585-01)

Add white and orange, information pillar light buoy FI Y, marked EKO 16 43°38'07.0"N 079°22'55.7"W
(B2001-133) LL(517.16) DFO(6601586-01)

L/C2100 - Lake Erie / Lac Érié - New Edition - 25-DEC-1998 - NAD 1983

17-AUG-2001 LNM/D. 06-APR-2001
Delete light FI R 42°41'35.8"N 079°02'42.8"W
DFO(6500430-01)

L/C2123 - Pelee Passage to/à La Detroit River - New Edition - 12-MAR-1993 - NAD 1927

10-AUG-2001 LNM/D. 06-OCT-2000
Reposition red light, starboard hand pillar buoy FI R, marked 2 from 41°36'42.6"N 082°49'04.6"W
to 41°36'42.0"N 082°49'02.3"W
DFO(6500426-01)

**SECTION 2 – Edition 08/2001
CHART CORRECTIONS**

| | | |
|----------|---|---|
| Amend | FI R to read FI R 6s against light buoy | 41°36'42.0"N 082°49'02.3"W <i>DFO(6500426-02)</i> |
| (P)Amend | FI G to read FI G 2.5s against light buoy This information will be incorporated in the next New Edition of this chart. | 41°40'16.0"N 082°47'02.0"W <i>DFO(6601541-01)</i> |
| (P)Amend | FI R to read FI R 2.5s against light buoy This information will be incorporated in the next New Edition of this chart. | 41°39'42.0"N 082°49'18.0"W <i>DFO(6601541-02)</i> |
| Amend | "FI 4s 17m 6M" to read "FI 4s 17m 7M" against light | 41°44'12.0"N 083°06'36.0"W <i>DFO(6601542-01)</i> |
| Add | light "FI R 2.5s 9m (Priv)" | 41°37'00.0"N 083°07'42.0"W <i>DFO(6601542-02)</i> |
| Amend | "FI G 2½ 7m 5M" to read "FI R 9m 6M" against light | 41°39'06.0"N 083°14'12.0"W <i>DFO(6601542-03)</i> |
| Amend | "FI G 14m 13M" to read "FI G 10s 14m 13M" against light | 42°02'24.0"N 083°08'03.0"W <i>LL(INL642) DFO(6601544-01)</i> |

2181 - Scudder - New Edition - 10-NOV-1989 - Unknown

| | | |
|-------------|--|--|
| 03-AUG-2001 | | LNM/D. 06-OCT-2000 |
| (P)Amend | "FI R" to read "FI R Priv" against light This information will be incorporated in the next New Edition of this chart. | 157°, 123m from NE corner of wharf <i>(B2001-089) LL(605) DFO(6601533-01)</i> |

L/C2200 - Lake Huron/Lac Huron - New Edition - 01-MAY-1987 - NAD 1927

| | | |
|-------------|---|--|
| 17-AUG-2001 | | LNM/D. 06-APR-2001 |
| (P)Amend | Iso to read Iso 6s 20m 14M against light This information will be incorporated in the next New Edition of this chart. | 45°29'12.0"N 083°54'48.0"W <i>DFO(6500427-01)</i> |
| (P)Amend | FI G to read FI G 2.5s 8m 4M against light This information will be incorporated in the next New Edition of this chart. | 45°35'36.0"N 084°09'42.0"W <i>DFO(6500427-02)</i> |
| (P)Amend | FI R to read FI R 5s 26 m 10M against light This information will be incorporated in the next New Edition of this chart. | 45°46'24.0"N 084°08'12.0"W <i>DFO(6500427-03)</i> |
| (P)Amend | FI to read "FI 10s 23m 13M", "FR" against light This information will be incorporated in the next New Edition of this chart. | 45°56'54.0"N 083°54'12.0"W <i>DFO(6500427-04)</i> |

**SECTION 2 – Edition 08/2001
CHART CORRECTIONS**

| | | |
|----------|--|--|
| (P)Amend | FI to read FI 2.5s 10m 6M against light | 45°48'36.0"N 084°25'18.0"W |
| | This information will be incorporated in the next New Edition of this chart. | <i>DFO(6500427-05)</i> |
| (P)Amend | FI R to read FI R 5s 22m 12M against light | 45°50'36.0"N 084°36'54.0"W |
| | This information will be incorporated in the next New Edition of this chart. | <i>DFO(6500427-06)</i> |
| (P)Amend | Iso 2s 8M to read Iso 2s 22m 8M against light | 45°41'42.0"N 084°21'42.0"W |
| | This information will be incorporated in the next New Edition of this chart. | <i>DFO(6500427-07)</i> |
| Delete | radio beacon | 45°41'42.0"N 084°21'42.0"W <i>DFO(6601582-04)</i> |
| Amend | FI to read AI WR 10s 20m 11M against light | 45°54'48.0"N 084°08'54.0"W <i>DFO(6601582-06)</i> |
| Delete | radio beacon | 45°50'36.0"N 084°36'54.0"W <i>DFO(6601582-09)</i> |
| Delete | radio beacon | 45°56'54.0"N 083°54'12.0"W <i>DFO(6601582-11)</i> |

2204 - Key Harbour to/à French River - Sheet 2 - New Edition - 23-FEB-2001 - NAD 1983

24-AUG-2001

FOR YOUR INFORMATION

| | | |
|--------|---|--|
| Delete | The following notice actions, published in the April edition 2001 of Notice to Mariners against the version of this chart dated 06-MAY-1983 NAD 1927, were incorporated in the new edition dated 23-FEB-2001 NAD 1983. This new version is advertised in the July edition of the Notices to Mariners. | |
| Delete | red, green and red starboard bifurcation spar buoy, marked DA | 45°53'45.1"N 080°48'45.6"W <i>DFO(6601437-01)</i> |
| Add | green port hand can buoy, marked D57 | 45°53'43.1"N 080°48'50.6"W <i>DFO(6601438-01)</i> |
| | THEY DO NOT APPLY TO THE CURRENT VERSION OF THIS CHART DATED 23 FEB 2001, NAD 1983 | <i>DFO(6500431-01)</i> |

L/C2228 - Lake Huron/Lac Huron (Southern Portion/Partie sud) - New Chart - 16-FEB-1990 - NAD 1983

24-AUG-2001

LNM/D. 01-JUN-2001

| | | |
|-------|---|--|
| Amend | FI R 2½ 8m 4M to read FI R 2.5s 9m 4M against light | 43°16'05.0"N 082°31'21.0"W <i>DFO(6601570-01)</i> |
| Amend | FI G 4s 8m 4M to read FI G 8m 3M against light | 43°16'06.0"N 082°31'24.0"W <i>DFO(6601570-02)</i> |

2251 - Meldrum Bay to/à St. Joseph Island - New Chart - 11-APR-1986 - NAD 1927

17-AUG-2001

LNM/D. 23-MAR-2001

| | | |
|-------|---|--|
| Amend | FI WR 10s 23m 13M to read "FI 10s 23m 13M", "F R" against light | 45°56'54.2"N 083°54'15.2"W <i>DFO(6601582-10)</i> |
|-------|---|--|

**SECTION 2 – Edition 08/2001
CHART CORRECTIONS**

Delete radio beacon 45°56'54.2"N 083°54'15.2"W
DFO(6601582-11)

Amend FI R to read FI R 6s against light buoy 45°56'34.4"N 083°52'33.9"W
DFO(6601582-12)

Amend FI R to read FI R 2.5s against lighted bell buoy 45°57'34.0"N 083°53'10.0"W
DFO(6601582-13)

2297 - Duck Islands to DeTour Passage - New Edition - 20-JAN-1960 - Unknown

17-AUG-2001 LNM/D. 02-FEB-2001
Amend FI WR 10 sec 74 ft 13 M to read "FI 10s 74ft 13M", "F R" against light 45°56'54.3"N 083°54'15.0"W
DFO(6601582-10)

Delete radio beacon 45°56'54.3"N 083°54'15.0"W
DFO(6601582-11)

Amend FI R to read FI R 6s against light buoy 45°56'34.5"N 083°52'33.7"W
DFO(6601582-12)

L/C4010 - Bay of Fundy (Inner Portion) - New Edition - 18-NOV-1983 - NAD 1927

17-AUG-2001 LNM/D. 22-JUN-2001
Delete light 45°43'16.6"N 064°37'18.7"W
(F2001-030) LL(158) DFO(6829558-01)

Add tower and legend Lt Ho Aband 45°43'16.6"N 064°37'18.7"W
(F2001-030) DFO(6829558-02)

L/C4013 - Halifax to à Sydney - New Edition - 07-NOV-1986 - NAD 1927

24-AUG-2001 LNM/D. 13-APR-2001
Reposition black, yellow, black, East cardinal pillar light buoy, Q(3) 10s, WHIS, marked PK from 45°17'17.8"N 060°53'08.6"W
to 45°17'35.8"N 060°53'00.6"W
(G2000-021) LL(666.8) DFO(6828775-03)

L/C4016 - Saint-Pierre to à St. John's - New Edition - 05-MAY-1995 - NAD 1927

10-AUG-2001 LNM/D. 22-JUN-2001
Amend LFI to read FI 10s 85ft 17M 46°58'45.0"N 055°11'40.0"W
(N2001-079) LL(71.000) DFO(6829580-01)

Add Fog Sig 46°58'45.0"N 055°11'40.0"W
LL(71.2) DFO(6829580-02)

L/C4020 - Strait of Belle Isle - New Edition - 27-DEC-1991 - NAD 1927

03-AUG-2001 LNM/D. 13-APR-2001
Delete red, starboard hand conical buoy, marked NP6 51°37'42.0"N 056°36'51.0"W
(N1998-215) DFO(6829557-01)

Add red starboard hand pillar light buoy FI R, marked NP6 51°37'42.0"N 056°36'51.0"W
(N1998-215) LL(229.100) DFO(6829557-02)

4047 - St. Pierre Bank/Banc de Saint-Pierre to/au Whale Bank/Banc de la Baleine - New Edition – 09-OCT-1998 - NAD 1983

10-AUG-2001 LNM/D. 22-JUN-2001
Amend LFI to read FI 10s 26m 17M 46°58'50.0"N 055°11'30.0"W
(N2001-079) LL(71.000) DFO(6829580-01)

**SECTION 2 – Edition 08/2001
CHART CORRECTIONS**

Add Fog Sig 46°58'50.0"N 055°11'30.0"W
LL(71.2) DFO(6829580-02)

4124 - Letete Passage, Letang Harbour and/et Blacks Harbour - New Edition - 07-APR-2000 - NAD 1983

31-AUG-2001 LNM/D. 12-JAN-2001
CANCELS red light buoy marked SE2 from 45°01'52.8"N 066°52'21.9"W
to 45°01'51.0"N 066°52'18.0"W

With this notification, Notice 507 (T)/95 is cancelled. The buoy is now back in its original position.

DFO(6012504-01)

4130 - Petitcodiac River and Cumberland Basin - New Chart - 30-MAY-1969 - NAD 1927

17-AUG-2001 LNM/D. (527-1991)
Delete light 45°43'16.6"N 064°37'18.8"W
(F2001-030) LL(158) DFO(6829558-01)

Add tower and legend Lt Ho Aband 45°43'16.6"N 064°37'18.8"W
(F2001-030) DFO(6829558-02)

4142 - Grand Lake - Sheet 4 - New Edition - 01-NOV-1996 - NAD 1983

24-AUG-2001 LNM/D. 26-MAY-2000
Delete green, port hand spar buoy, marked E91 46°04'30.2"N 065°55'28.5"W
(F2001-032) DFO(6829591-01)

Delete green, port hand spar buoy, marked E93 46°04'40.7"N 065°55'20.9"W
(F2001-033) DFO(6829592-01)

Delete red, starboard hand spar buoy, marked E94 46°04'50.1"N 065°55'14.9"W
(F2001-034) DFO(6829593-01)

Delete green, port hand spar buoy, marked E95 46°04'48.2"N 065°55'18.9"W
(F2001-035) DFO(6829594-01)

Delete green, port hand spar buoy, marked E97 46°04'55.7"N 065°55'19.9"W
(F2001-036) DFO(6829595-01)

Delete green, port hand spar buoy, marked E99 46°05'03.2"N 065°55'32.5"W
(F2001-037) DFO(6829596-01)

Delete red, starboard hand spar buoy, marked E100 46°05'05.7"N 065°55'30.6"W
(F2001-038) DFO(6829597-01)

Delete red, starboard hand spar buoy, marked E102 46°04'59.2"N 065°56'01.9"W
(F2001-040) DFO(6829598-01)

Delete green, port hand spar buoy, marked E105 46°04'54.6"N 065°56'17.1"W
(F2001-041) DFO(6829599-01)

Delete red, starboard hand spar buoy, marked E106 46°04'58.4"N 065°56'31.1"W
(F2001-042) DFO(6829600-01)

Delete green, port hand spar buoy, marked E107 46°04'56.5"N 065°56'44.7"W
(F2001-043) DFO(6829601-01)

Delete red, starboard hand spar buoy, marked E108 46°05'01.2"N 065°56'41.5"W
(F2001-044) DFO(6829602-01)

Delete green, port hand spar buoy, marked E111 46°05'06.2"N 065°56'53.9"W
(F2001-045) DFO(6829603-01)

**SECTION 2 – Edition 08/2001
CHART CORRECTIONS**

| | | |
|--------|--|---|
| Delete | red, starboard hand spar buoy, marked E112 | 46°05'05.9"N 065°56'46.0"W (F2001-046) DFO(6829604-01) |
| Delete | red, starboard hand spar buoy, marked E114 | 46°05'14.2"N 065°56'47.0"W (F2001-047) DFO(6829605-01) |
| Delete | green, port hand spar buoy, marked E115 | 46°05'18.2"N 065°56'52.9"W (F2001-048) DFO(6829606-01) |
| Delete | red, starboard hand spar buoy, marked E116 | 46°05'20.9"N 065°56'42.2"W (F2001-049) DFO(6829607-01) |
| Delete | green, port hand spar buoy, marked E117 | 46°05'27.5"N 065°56'44.0"W (F2001-050) DFO(6829608-01) |
| Delete | green, port hand spar buoy, marked E119 | 46°05'33.4"N 065°56'29.4"W (F2001-051) DFO(6829609-01) |
| Delete | green, port hand spar buoy, marked E121 | 46°05'37.8"N 065°56'10.9"W (F2001-052) DFO(6829610-01) |
| Delete | green, port hand spar buoy, marked E123 | 46°05'41.4"N 065°55'57.2"W (F2001-053) DFO(6829611-01) |
| Delete | green, port hand spar buoy, marked E127 | 46°05'46.7"N 065°55'40.9"W (F2001-054) DFO(6829612-01) |
| Delete | green, port hand spar buoy, marked E131 | 46°05'54.7"N 065°55'29.9"W (F2001-055) DFO(6829613-01) |
| Delete | red, starboard hand spar buoy, marked E134 | 46°06'17.0"N 065°55'36.8"W (F2001-056) DFO(6829614-01) |
| Delete | red, starboard hand spar buoy, marked E132 | 46°06'05.7"N 065°55'28.3"W (F2001-057) DFO(6829615-01) |
| Delete | red, starboard hand spar buoy, marked E136 | 46°06'25.2"N 065°55'43.2"W (F2001-058) DFO(6829616-01) |
| Delete | green, port hand spar buoy, marked E137 | 46°06'31.2"N 065°55'47.4"W (F2001-059) DFO(6829617-01) |
| Delete | red, starboard hand spar buoy, marked E138 | 46°06'53.6"N 065°55'47.0"W (F2001-060) DFO(6829618-01) |
| Delete | green, port hand spar buoy, marked E139 | 46°07'04.8"N 065°55'54.6"W (F2001-061) DFO(6829619-01) |
| Delete | red, starboard hand spar buoy, marked E140 | 46°07'06.2"N 065°55'50.9"W (F2001-062) DFO(6829620-01) |
| Delete | green, port hand spar buoy, marked E141 | 46°07'13.9"N 065°56'08.1"W (F2001-063) DFO(6829621-01) |
| Delete | red, starboard hand spar buoy, marked E142 | 46°07'45.2"N 065°56'41.9"W (F2001-064) DFO(6829622-01) |

**SECTION 2 – Edition 08/2001
CHART CORRECTIONS**

| | | |
|-------------|--|---|
| Delete | red, starboard hand spar buoy, marked E144 | 46°08'37.5"N 065°56'11.2"W (F2001-065) DFO(6829623-01) |
| Delete | red, starboard hand spar buoy, marked E146 | 46°08'43.5"N 065°55'28.8"W (F2001-066) DFO(6829624-01) |
| Delete | red, starboard hand spar buoy, marked E148 | 46°08'55.7"N 065°55'18.5"W (F2001-067) DFO(6829625-01) |
| Delete | red, starboard hand spar buoy, marked E150 | 46°09'02.7"N 065°55'05.6"W (F2001-068) DFO(6829626-01) |
| Delete | green, port hand spar buoy, marked E151 | 46°09'07.4"N 065°54'53.8"W (F2001-069) DFO(6829627-01) |
| Delete | green, port hand spar buoy, marked E153 | 46°09'12.3"N 065°54'35.3"W (F2001-070) DFO(6829628-01) |
| Delete | red, starboard hand spar buoy, marked E154 | 46°09'12.7"N 065°54'28.1"W (F2001-071) DFO(6829629-01) |
| Delete | red, starboard hand spar buoy, marked E156 | 46°09'14.9"N 065°54'17.1"W (F2001-072) DFO(6829630-01) |
| Delete | red, starboard hand spar buoy, marked E158 | 46°09'18.4"N 065°54'01.6"W (F2001-073) DFO(6829631-01) |
| Delete | red, starboard hand spar buoy, marked E160 | 46°09'32.0"N 065°53'40.9"W (F2001-074) DFO(6829632-01) |
| Delete | green, port hand spar buoy, marked E101 | 46°04'59.2"N 065°55'48.9"W (F2001-039) DFO(6829662-01) |
| 31-AUG-2001 | | LNMD. 24-AUG-2001 |
| Add | red, starboard hand spar buoy, marked EF10 | 46°05'12.1"N 065°56'48.3"W (F2001-089) DFO(6406390-01) |
| Add | green, port hand spar buoy, marked EF1 | 46°04'49.8"N 065°55'22.9"W (F2001-083) DFO(6829663-01) |
| Add | green, port hand spar buoy, marked EF3 | 46°05'02.0"N 065°55'35.5"W (F2001-084) DFO(6829664-01) |
| Add | red, starboard hand spar buoy, marked EF4 | 46°05'00.0"N 065°55'54.7"W (F2001-085) DFO(6829665-01) |
| Add | green, port hand spar buoy, marked EF5 | 46°04'54.8"N 065°56'17.0"W (F2001-086) DFO(6829666-01) |
| Add | red, starboard hand spar buoy, marked EF6 | 46°04'57.7"N 065°56'33.1"W (F2001-087) DFO(6829667-01) |
| Add | red, starboard hand spar buoy, marked EF8 | 46°05'01.3"N 065°56'44.8"W (F2001-088) DFO(6829668-01) |
| Add | red, starboard hand spar buoy, marked EF12 | 46°05'23.0"N 065°56'40.5"W (F2001-090) DFO(6829669-01) |

**SECTION 2 – Edition 08/2001
CHART CORRECTIONS**

| | | |
|--|--|---|
| Add | green, port hand spar buoy, marked EF13 | 46°05'32.3"N 065°56'29.8"W (F2001-091) DFO(6829670-01) |
| Add | green, port hand spar buoy, marked EF15 | 46°05'38.5"N 065°56'05.5"W (F2001-092) DFO(6829671-01) |
| Add | green, port hand spar buoy, marked EF17 | 46°05'44.6"N 065°55'45.8"W (F2001-093) DFO(6829672-01) |
| Add | green, port hand spar buoy, marked EF19 | 46°05'53.8"N 065°55'30.1"W (F2001-094) DFO(6829673-01) |
| Add | red, starboard hand spar buoy, marked EF20 | 46°06'08.3"N 065°55'31.9"W (F2001-095) DFO(6829674-01) |
| Add | green, port hand spar buoy, marked EF21 | 46°06'34.1"N 065°55'47.6"W (F2001-096) DFO(6829675-01) |
| Add | red, starboard hand spar buoy, marked EF22 | 46°06'54.1"N 065°55'48.4"W (F2001-097) DFO(6829676-01) |
| Add | green, port hand spar buoy, marked EF23 | 46°07'04.3"N 065°55'53.4"W (F2001-098) DFO(6829677-01) |
| Add | green, port hand spar buoy, marked EF25 | 46°07'13.4"N 065°56'07.3"W (F2001-099) DFO(6829678-01) |
| Add | red, starboard hand spar buoy, marked EF26 | 46°07'40.9"N 065°56'39.5"W (F2001-100) DFO(6829679-01) |
| Add | red, starboard hand spar buoy, marked EF30 | 46°08'51.0"N 065°55'22.7"W (F2001-101) DFO(6829680-01) |
| Add | red, starboard hand spar buoy, marked EF28 | 46°08'37.8"N 065°56'11.2"W (F2001-102) DFO(6829681-01) |
| Add | green, port hand spar buoy, marked EF31 | 46°09'05.8"N 065°55'05.5"W (F2001-103) DFO(6829682-01) |
| Add | green, port hand spar buoy, marked EF33 | 46°09'09.8"N 065°54'42.0"W (F2001-104) DFO(6829683-01) |
| Add | red, starboard hand spar buoy, marked EF34 | 46°09'13.6"N 065°54'28.8"W (F2001-105) DFO(6829684-01) |
| Add | red, starboard hand spar buoy, marked EF36 | 46°09'15.3"N 065°54'17.1"W (F2001-106) DFO(6829685-01) |
| 4142 - Chipman - Sheet 4 - New Edition - 01-NOV-1996 - NAD 1983 | | |
| 24-AUG-2001 | | |
| Delete | red, starboard hand spar buoy, marked E160 | LNM/D. 26-MAY-2000 46°09'32.0"N 065°53'40.9"W (F2001-074) DFO(6829632-01) |
| Delete | green, port hand spar buoy, marked E161 | 46°09'37.5"N 065°53'41.3"W (F2001-075) DFO(6829633-01) |
| Delete | red, starboard hand spar buoy, marked E162 | 46°09'44.4"N 065°53'38.8"W (F2001-076) DFO(6829634-01) |

**SECTION 2 – Edition 08/2001
CHART CORRECTIONS**

| | | |
|-------------|--|---|
| Delete | red, starboard hand spar buoy, marked E164 | 46°09'50.1"N 065°53'37.9"W (F2001-077) DFO(6829635-01) |
| Delete | red, starboard hand spar buoy, marked E166 | 46°10'08.4"N 065°53'34.7"W (F2001-078) DFO(6829636-01) |
| Delete | green, port hand spar buoy, marked E167 | 46°10'19.1"N 065°53'36.2"W (F2001-079) DFO(6829637-01) |
| Delete | green, port hand spar buoy, marked E169 | 46°10'23.6"N 065°53'29.0"W (F2001-080) DFO(6829638-01) |
| Delete | red, starboard hand spar buoy, marked E168 | 46°10'18.6"N 065°53'33.8"W (F2001-081) DFO(6829639-01) |
| Delete | green, port hand spar buoy, marked E171 | 46°10'27.0"N 065°53'20.7"W (F2001-082) DFO(6829640-01) |
| 31-AUG-2001 | | LNM/D. 24-AUG-2001 |
| Add | red, starboard hand spar buoy, marked EF40 | 46°09'37.7"N 065°53'39.7"W (F2001-108) DFO(6829687-01) |
| Add | red, starboard hand spar buoy, marked EF42 | 46°09'44.3"N 065°53'38.7"W (F2001-109) DFO(6829688-01) |
| Add | red, starboard hand spar buoy, marked EF44 | 46°09'51.1"N 065°53'37.8"W (F2001-110) DFO(6829689-01) |
| Add | red, starboard hand spar buoy, marked EF46 | 46°09'58.4"N 065°53'35.1"W (F2001-111) DFO(6829690-01) |
| Add | red, starboard hand spar buoy, marked EF48 | 46°10'08.3"N 065°53'34.8"W (F2001-112) DFO(6829691-01) |
| Add | red, starboard hand spar buoy, marked EF50 | 46°10'18.8"N 065°53'33.8"W (F2001-113) DFO(6829692-01) |
| Add | green, port hand spar buoy, marked EF51 | 46°10'25.6"N 065°53'22.9"W (F2001-114) DFO(6829693-01) |

4202 - Halifax Harbour - Point Pleasant to/à Bedford Basin - New Edition - 31-DEC-1999 - NAD 1983

| | | |
|-------------|---------------------------|---|
| 10-AUG-2001 | | LNM/D. 27-OCT-2000 |
| Amend | 3 Lts FR to read 3 Lts FG | 44°38'08.1"N 063°33'47.7"W DFO(6829560-01) |
| Amend | 2 Lts FR to read FR | 44°38'01.7"N 063°33'44.6"W DFO(6829560-02) |
| Amend | 2 Lts FG to read 2 Lts FR | 44°37'59.0"N 063°33'43.5"W DFO(6829560-03) |

4202 - Ocean Terminals - New Edition - 31-DEC-1999 - NAD 1983

| | | |
|-------------|---------------------------|---|
| 10-AUG-2001 | | LNM/D. 27-OCT-2000 |
| Amend | 3 Lts FR to read 3 Lts FG | 44°38'08.1"N 063°33'47.7"W DFO(6829560-01) |
| Amend | 2 Lts FR to read FR | 44°38'01.7"N 063°33'44.6"W DFO(6829560-02) |

**SECTION 2 – Edition 08/2001
CHART CORRECTIONS**

Amend 2 Lts FG to read 2 Lts FR 44°37'59.0"N 063°33'43.5"W
DFO(6829560-03)

L/C4233 - Cape Canso to à Country Island - New Chart - 11-JAN-1991 - NAD 1983

24-AUG-2001 LNM/D. 24-NOV-2000

Reposition black, yellow, black, East cardinal pillar light buoy, Q(3) 10s, WHIS, marked PK from 45°17'18.0"N 060°53'06.0"W
to 45°17'36.0"N 060°52'58.0"W
(G2000-021) LL(666.8) DFO(6828775-03)

Delete green, port hand spar buoy, marked PM1 45°17'57.1"N 060°55'06.2"W
(G2000-023) DFO(6828776-02)

Add green, port hand spar buoy, marked PK1 45°18'13.3"N 060°54'41.7"W
(G2000-025) DFO(6828777-02)

Amend F Y to read F R against front range light 45°19'56.3"N 060°58'45.7"W
(G2000-035) LL(672) DFO(6828848-01)

Amend F Y to read F R against rear range light 266° 28', 384.3 metres from front light
(G2000-036) LL(673) DFO(6828848-02)

Add red, starboard hand spar buoy, marked PK2 45°19'04.3"N 060°55'35.7"W
(G2000-058) DFO(6829224-02)

4307 - Canso Harbour to Strait of Canso - New Edition - 15-FEB-1985 - NAD 1927

24-AUG-2001 LNM/D. (1904-1999)

Amend F Y to read F R against front range light 45°19'56.0"N 060°58'48.0"W
(G2000-035) LL(672) DFO(6828848-01)

Amend F Y to read F R against rear range light 266° 28', 384.3 metres from front light
(G2000-036) LL(673) DFO(6828848-02)

L/C4321 - Cape Canso to Liscomb Island - New Edition - 11-OCT-1985 - NAD 1927

24-AUG-2001 LNM/D. 23-MAR-2001

Reposition black, yellow, black, East cardinal pillar light buoy, Q(3) 10s, WHIS, marked PK from 45°17'19.2"N 060°53'09.9"W
to 45°17'37.2"N 060°53'01.9"W
(G2000-021) LL(666.8) DFO(6828775-03)

L/C4335 - Strait of Canso and Approaches - New Edition - 14-AUG-1998 - NAD 1983

24-AUG-2001 LNM/D. (1904-1999)

Add black, yellow, black, East cardinal pillar light buoy, Q(3) 10s, WHIS marked PK 45°17'36.0"N 060°52'58.0"W
(G2000-021) LL(666.8) DFO(6828775-02)

Amend F Y to read F R against front range light 45°19'56.3"N 060°58'45.7"W
(G2000-035) LL(672) DFO(6828848-01)

Amend F Y to read F R against rear range light 266° 28', 384.3 metres from front light
(G2000-036) LL(673) DFO(6828848-02)

Delete green port hand pillar light buoy FI G, BELL, marked PK1 45°18'05.0"N 060°54'06.5"W
(G1998-067) LL(667) DFO(6829524-01)

4416 - Havre de Gaspé - New Edition - 01-MAY-1998 - NAD 1983

03-AUG-2001 LNM/D. 11-FEB-2000

(P)Reposition green port hand pillar light buoy FI G, marked HD-9 from 48°50'36.2"N 064°24'45.1"W
to 48°50'37.6"N 064°24'45.1"W

**SECTION 2 – Edition 08/2001
CHART CORRECTIONS**

A new edition incorporating this change will be available at a later date.

(L2001-071) LL(ATL1419.8) DFO(6406347-01)

L/C4485 - Cap des Rosiers à/to Chandler - New Edition - 26-SEP-1997 - NAD 1983

17-AUG-2001 LNM/D. 08-DEC-2000
 Reposition green light, port hand pillar buoy FI G, marked HD-9 from 48°50'36.2"N 064°24'45.1"W
 to 48°50'37.6"N 064°24'45.1"W
(L2001-071) LL(1419.8) DFO(6406324-01)

4616 - Burin Harbours - New Edition - 19-APR-1991 - NAD 1927

10-AUG-2001 LNM/D. (1531-1998)
 Amend LFI to read FI 10s 85ft 17M 46°58'49.0"N 055°11'30.0"W
(N2001-079) LL(71.000) DFO(6829580-01)

Add Fog Sig 30s 46°58'49.0"N 055°11'30.0"W
LL(71.2) DFO(6829580-02)

4624 - Long Island to/à St. Lawrence Harbours - New Edition - 07-JAN-2000 - NAD 1983

10-AUG-2001 LNM/D. 11-MAY-2001
 Amend LFI to read FI 10s 26m 17M 46°58'49.0"N 055°11'25.0"W
(N2001-079) LL(71.000) DFO(6829580-01)

Add Fog Sig 30s 46°58'49.0"N 055°11'25.0"W
LL(71.2) DFO(6829580-02)

4633 - Ramea Islands to Bonne Bay - New Edition - 24-APR-1987 - Unknown

03-AUG-2001 LNM/D. 15-JUN-2001
 Add light FI G 47°35'08.5"N 057°06'45.9"W
(N1999-156) LL(139.51) DFO(6827287-01)

4634 - La Poile Bay to Ramea Islands - New Edition - 14-JUL-1995 - Unknown

10-AUG-2001 LNM/D. 15-JUN-2001
 Add red light, starboard hand spar buoy, FI R, marked QUG2 47°39'32.2"N 058°15'40.1"W
(N1999-102) LL(146.4) DFO(6829549-01)

4667 - Savage Cove to St. Barbe Bay - New Edition - 08-OCT-1965 - Unknown

10-AUG-2001 LNM/D. (142-1999)
 Add legend "Bkw" against breakwater 42° 10' 2.660 miles from Capstan
 Observation Point (51°17'25"N 56°44'33"W)
DFO(6500429-01)

4668 - Pinware Bay – New Chart - 10-OCT-1957 - Unknown

03-AUG-2001 LNM/D. (2147-1998)
 Delete red, starboard hand conical buoy, marked NP6 060°30' 3.615 sea miles from St. Modeste
 Island light (51°35'30"N,56°41'00"W)
(N1998-215) DFO(6829557-01)

Add red starboard hand pillar light buoy FI R, marked NP6 060°30' 3.615 sea miles from St. Modeste
 Island light (51°35'30"N,56°41'00"W)
(N1998-215) LL(229.100) DFO(6829557-02)

4858 - Greenspond Harbour to/à Pound Cove - New Chart - 25-DEC-1998 - NAD 1983

03-AUG-2001 LNM/D. 26-JAN-2001
 Delete red, starboard hand, conical buoy, marked JV8 49°07'02.8"N 053°36'23.5"W
(N2000-119) LL(419.52) DFO(6828918-01)

Add red starboard hand spar light buoy FI R, marked JV8 49°07'02.8"N 053°36'23.5"W
(N2000-119) LL(419.52) DFO(6828918-02)

**SECTION 2 – Edition 08/2001
CHART CORRECTIONS**

Replace green port hand spar buoy, marked JV7, with green port hand spar light buoy FI G, marked JV7 49°07'01.8"N 053°36'23.5"W
(N1999-045) LL(417.100) DFO(6829144-01)

4858 - Valleyfield - New Chart - 25-DEC-1998 - NAD 1983

03-AUG-2001 LNMD. 26-JAN-2001
Delete red, starboard hand, conical buoy, marked JV8 49°07'02.8"N 053°36'23.5"W
(N2000-119) LL(419.52) DFO(6828918-01)

Add red starboard hand spar light buoy FI R, marked JV8 49°07'02.8"N 053°36'23.5"W
(N2000-119) LL(419.52) DFO(6828918-02)

Replace green port hand spar buoy, marked JV7, with green port hand spar light buoy FI G, marked JV7 49°07'01.8"N 053°36'23.5"W
(N1999-045) LL(417.100) DFO(6829144-01)

L/C4952 - Îles de la Madeleine - Partie nord/Northern Portion - New Chart - 21-AUG-1992 - NAD 1983

17-AUG-2001 LNMD. 15-JUN-2001
(T)Add yellow cautionary spar buoy, Priv 47°35'02.5"N 061°31'25.4"W

This buoy belongs to the marine farm being advertised in this edition for this chart. See record reference number DFO (6406346).

(L2001-077) DFO(6406330-01)

(T)Add yellow cautionary spar buoy, Priv 47°34'21.6"N 061°30'52.3"W

This buoy belongs to the marine farm being advertised in this edition for this chart. See record reference number DFO (6406346).

(L2001-078) DFO(6406331-01)

(T)Add yellow cautionary spar buoy, Priv 47°34'05.5"N 061°31'26.0"W

This buoy belongs to the marine farm being advertised in this edition for this chart. See record reference number DFO (6406346).

(L2001-079) DFO(6406332-01)

(T)Add yellow cautionary spar buoy, Priv 47°34'42.7"N 061°32'02.7"W

This buoy belongs to the marine farm being advertised in this edition for this chart. See record reference number DFO (6406346).

(L2001-080) DFO(6406333-01)

(T)Add marine farm joining 47°35'02.5"N 061°31'25.4"W
47°34'21.6"N 061°30'52.3"W
47°34'05.5"N 061°31'26.0"W
47°34'42.7"N 061°32'02.7"W
and 47°35'02.5"N 061°31'25.4"W

An aquaculture zone covering a maximum area of 1441 X 991 metres is established. The zone is marked from April 1 to December 1 with yellow unlighted cautionary buoys equipped with radar reflectors. The long lines are marked with yellow balloons spaced at a maximum 30 metre intervals.

DFO(6406346-01)

**SECTION 2 – Edition 08/2001
CHART CORRECTIONS**

4954 - Chenal du Havre de la Grande Entrée - New Edition - 20-JUN-1997 - NAD 1983

17-AUG-2001 LNM/D. 09-FEB-2001
 (T)Add marine farm joining 47°35'02.5"N 061°31'25.4"W
 47°34'20.6"N 061°30'52.3"W
 47°34'05.5"N 061°31'26.0"W
 47°34'42.7"N 061°32'02.7"W
 and 47°35'02.5"N 061°31'25.4"W

An aquaculture zone covering a maximum area of 1441 X 991 metres is established. The zone is marked from April 1 to December 1 with yellow unlighted cautionary buoys equipped with radar reflectors. The long lines are marked with yellow balloons spaced at a maximum 30 metre intervals.

DFO(6406348-01)

(T)Add yellow cautionary spar buoy, Priv 47°34'42.7"N 061°32'02.7"W
(L2001-080) DFO(6406349-01)

(T)Add yellow cautionary spar buoy, Priv 47°34'05.5"N 061°31'26.0"W
(L2001-079) DFO(6406350-01)

(T)Add yellow cautionary spar buoy, Priv 47°34'21.6"N 061°30'52.3"W
(L2001-078) DFO(6406351-01)

(T)Add yellow cautionary spar buoy, Priv 47°35'02.5"N 061°31'25.4"W
(L2001-077) DFO(6406353-01)

6100 - Saint-Félicien - Sheet 3 - Reprint - 10-APR-1992 - NAD 1927

31-AUG-2001
 CANCELS St-Félicien's marina 041°30', 686 meters from Southwest corner of border

This information has been incorporated into the New Edition of this chart. See Section 1 in this issue.

DFO(6406106-01)

6201 - Lake of the Woods - New Edition - 16-MAR-1973 - NAD 1927

17-AUG-2001 LNM/D. 29-SEP-2000
 Delete light FI G 49°45'02.0"N 094°29'11.0"W
(D2001-036) LL(1471.7) DFO(6601601-01)

6211 - Big Traverse Bay - New Chart - 26-AUG-1988 - NAD 1983

17-AUG-2001 LNM/D. 02-JUN-2000
 Delete red, starboard hand spar buoy, marked 2 49°19'49.0"N 094°52'30.0"W
DFO(6601593-01)

Delete red, starboard hand spar buoy 49°19'44.0"N 094°54'00.0"W
DFO(6601593-02)

6212 - Kenora to/à Aulneau Peninsula (Northern Portion / Partie nord) - New Edition - 12-NOV-1982 - NAD 1927

17-AUG-2001 LNM/D. 01-JUN-2001
 Delete legend DB-4 against starboard daybeacon 49°42'05.0"N 094°30'44.0"W
(C2001-003) DFO(6601595-01)

Delete starboard daybeacon marked K-64 49°42'05.0"N 094°30'43.0"W
(C2001-003) DFO(6601595-02)

**SECTION 2 – Edition 08/2001
CHART CORRECTIONS**

6215 - Basil Channel to/à Sturgeon Channel - New Chart - 01-JUL-1977 - NAD 1927

| | | |
|-------------|---|---|
| 17-AUG-2001 | | LNM/D. 02-JUN-2000 |
| Delete | red, starboard hand spar buoy, marked 2 | 49°19'48.0"N 094°52'30.0"W DFO(6601593-01) |
| Delete | red, starboard hand spar buoy | 49°19'44.0"N 094°53'56.5"W DFO(6601593-02) |

6216 - Sturgeon Channel to/à Big Narrows Island - New Chart - 02-APR-1982 - NAD 1927

| | | |
|-------------|-------------------------------|---|
| 17-AUG-2001 | | LNM/D. 29-DEC-2000 |
| Delete | green, port hand spar buoy | 49°21'10.0"N 095°03'27.0"W DFO(6601594-01) |
| Delete | red, starboard hand spar buoy | 49°20'52.0"N 095°03'30.0"W DFO(6601594-02) |
| Delete | red, starboard hand spar buoy | 49°21'11.5"N 095°04'36.0"W DFO(6601594-03) |
| Delete | red, starboard hand spar buoy | 49°21'13.5"N 095°04'29.0"W DFO(6601594-04) |

6218 - Kenora, Rat Portage Bay - New Edition - 11-MAR-1988 - NAD 1927

| | | |
|-------------|---|---|
| 17-AUG-2001 | | LNM/D. 01-JUN-2001 |
| Delete | legend DB-4 against starboard daybeacon | 49°42'05.0"N 094°30'44.0"W (C2001-003) DFO(6601595-01) |
| Delete | starboard daybeacon marked K-64 | 49°42'05.0"N 094°30'43.0"W (C2001-003) DFO(6601595-02) |

6240 - Red River to Berens River - New Edition - 15-DEC-1995 - Unknown

| | | |
|-------------|------------------------|---|
| 31-AUG-2001 | | LNM/D. 01-SEP-2000 |
| Add | note "Channel buoyed". | 50°24'24.0"N 096°45'00.0"W DFO(6601615-02) |

6243 - Winnipeg River and Approaches - New Edition - 10-DEC-1971 - Unknown

| | | |
|-------------|-------------|---|
| 24-AUG-2001 | | LNM/D. 12-MAY-2000 |
| Add | beacon BnOr | 50°39'31.0"N 096°20'30.0"W (D2001-083) DFO(6601611-01) |

6251 - Red River / Rivière Rouge to/à Gull Harbour - New Edition - 26-MAY-2000 - NAD 1927

| | | |
|-------------|--|---|
| 31-AUG-2001 | | LNM/D. 18-MAY-2001 |
| Delete | note "Channel dredged to 10 feet and marked by buoys/Chenal dragué à 10 pieds et balisé" | 50°24'18.0"N 096°50'30.0"W DFO(6601615-01) |
| Add | note "Channel buoyed/Chenal balisé" | 50°24'18.0"N 096°50'30.0"W DFO(6601615-03) |

SECTION 3 - Edition 08/2001
CORRECTIONS TO RADIO AIDS TO MARINE NAVIGATION

CANADIAN COAST GUARD PUBLICATIONS - Amendment to the Radio Aids to Marine Navigation (Atlantic, St. Lawrence, Great Lakes, Lake Winnipeg and Eastern Arctic) Publication - 2001.

Page 2-71

Under Trois-Rivières - West (Pont Laviolette North of Channel) Quebec - Column 1 - Amend coordinates to read
46 18 28.9N 72 33 46.1W

Under Trois-Rivières - West (Pont Laviolette South of Channel) Quebec - Column 1 - Amend coordinates to read
46 18 23N 72 33 38W

SECTION 4 - Edition 08/2001
SAILING DIRECTIONS AND SMALL CRAFT GUIDE CORRECTIONS

Gulf of St. Lawrence, First Edition, 1992 —

Page 57 — Paragraph 136, line 2 – after “Island.”

Add: Starboard hand spar light **buoy** NP6 (229.1) is moored
0.25 mile SE of Soldier Rock.

(N2001-022.1)

Page 57 — Paragraph 140, last line

Add: Starboard hand spar light **buoy** NT2 (323.7) is moored close off
the north side of the Public wharf.

(N2001-022.2)

Page 186 — Paragraph 254, line 5

Delete: 4 to 11 fathoms (7.3 to 20 m)

Replace by: 36 to 66 feet (11 to 20 m)

(L2001-022.1)

Page 186 — Delete paragraph 254.1 (Re: Correction promulgated in Bi-weekly Edition No. 18/94)

Replace by: 254.1 Marine farm facilities, marked by yellow cautionary
buoys and lateral buoys, lie permanently in Bassin du Nord-
Ouest. For more information, refer to temporary Notices to
Mariners in effect.

(L2001-022.2)

Page 186 — After paragraph 255

Insert: 255.1 A marine farm, marked at each corner by a yellow
cautionary buoy, lies 1 mile east of Pointe de Sandy Beach.

(L2001-022.3)

Page 186 — Delete paragraph 256

Replace by: 256 Gaspé **Public** wharf is situated on the east side of the
harbour, near the hamlet of **Sandy Beach**. The wharf, 759 feet
(231 m) long and 110 feet (34 m) wide, has a depth of 33 feet
(10.1 m) alongside the outer 525 feet (160 m) of the north face
and a depth of 26 feet (8 m) alongside the outer 574 feet
(175 m) of the south face. It has a deck elevation of 7 feet
(2.1 m). Fuel and water are available. Several oil tanks lie in
the vicinity of the wharf.

(L2001-022.4)

Page 186 — Paragraph 259, line 2

Delete: 5 to 9 fathoms (9.1 to 16.5 m)

Replace by: 36 to 54 feet (11 to 16.5 m)

(L2001-022.5)

ATL 101 — Newfoundland — Northeast and East Coasts, First Edition, 1997 —

Page 85 — Paragraph 255, line 9

Delete: buoyed

Replace by: marked by starboard and port hand spar light **buoys**
JV8 and JV7 (419.52, 417.10)

(N2001-022.6)

SECTION 4 - Edition 08/2001
SAILING DIRECTIONS AND SMALL CRAFT GUIDE CORRECTIONS

- Page 91 — Paragraph 341, lines 4 and 12
Delete: Public
(N2001-022.7)
- Page 91 — Paragraph 341, lines 9 and 10
Delete: “Many... wharf.”
Replace by: A sunken wreck is located alongside the inner end
of the SW side of the wharf: caution is advised.
(N2001-022.8)
- Page 94 — Paragraph 367, line 13
Delete: fish plant with a
Replace by: Public
(N2001-022.9)
- Page 94 — Paragraph 367, line 16 – after “cove.”
Insert: A **light** (439.65) is shown from a mast at the outer
end of the wharf.
(N2001-023.0)
- Page 94 — Paragraph 367, line 17
Delete: “Diesel... fishers.”
(N2001-023.1)
- Page 96 — Paragraph 383, line 8 – after “bifurcation”
Insert: , port hand
(N2001-023.2)
- Page 96 — Paragraph 383, line 9
Delete correction promulgated in Monthly Edition No. 4/99.
Replace by: , JTT1, (442.45)
(N2001-023.3)
- Page 96 — Paragraph 384, line 5 – after “available.”
Insert: A **light** (442.5) is shown from a mast on the outer
end of the wharf.
(N2001-023.4)
- Page 97 — Paragraph 390, last line
Add: A **light** (441.25) is shown from a mast on the outer
end of the wharf.
(N2001-023.5)
- Page 97 — Paragraph 391, line 4 – after “long.”
Insert: A **light** (441.3) is shown from a mast on the outer
end of the Public wharf.
(N2001-023.6)
- Page 100 — Paragraph 410, last line
Add: A **light** (442.14) is shown from a mast on the outer
end of the Public wharf.
(N2001-023.7)

SECTION 4 - Edition 08/2001
SAILING DIRECTIONS AND SMALL CRAFT GUIDE CORRECTIONS

Page 101 — Paragraph 418, line 6 – after “end.”

Insert: A **light** (442.6) is shown from a mast on the outer end of the Public wharf.

(N2001-023.8)

Page 101 — Paragraph 421, last line

Add: A **light** (442.3) is shown from a mast on the outer end of the Public wharf.

(N2001-023.9)

Page 101 — Paragraph 422, last line

Add: A **light** (442.12) is shown from a mast on the outer end of the Public wharf.

(N2001-024.0)

Page 101 — Paragraph 425, last line

Add: A **light** (442.13) is shown from a mast on the outer end of the Public wharf.

(N2001-024.1)

Page 102 — Paragraph 436, last line

Add: A **light** (442.8) is shown from a mast on the outer end of the Public wharf.

(N2001-024.2)

Page 102 — Paragraph 438, last line

Add: A **light** (443.1) is shown from a mast on the outer end of the Public wharf.

(N2001-024.3)

Page 103 — Paragraph 448, line 7

Delete: 33 m (108 ft)

Replace by: 100 m (328 ft)

(N2001-024.4)

ATL 102 — Newfoundland — East and South Coasts, First Edition, 1995 —

Page 2 — Paragraph 13, last line

Add: A **light** (463.1) is shown from a mast on the outer end of the Public wharf.

(N2001-021.5)

Page 6 — Paragraph 57, line 8

Delete correction promulgated in Monthly Edition No. 4/97.

Replace by: in ruins

(N2001-021.6)

Page 8 — Paragraph 92, line 3 – after “**wharf**”

Insert: in ruins

(N2001-021.7)

Page 8 — Paragraph 92, lines 8 and 9

Delete: “was... 1991.”

Replace by: is in ruins.

(N2001-021.8)

Page 11 — Paragraph 124, line 4

SECTION 4 - Edition 08/2001
SAILING DIRECTIONS AND SMALL CRAFT GUIDE CORRECTIONS

Cancel correction promulgated in Monthly Edition No. 4/97. (N2001-021.9)

Page 79 — Paragraph 141, lines 3 and 4 (Re: Correction promulgated in Monthly Edition No. 8/98)
Add: A **fog signal** (71.2) of one blast every 30 seconds is sounded from a horn at the light on Little Burin Island; the horn point 096°. (N2001-022.0)

ATL 103 — Newfoundland — Southwest Coast, First Edition, 1995 —

Page 38 — Paragraph 18, line 4 – after “wharf.”
Add: A **light** (139.51) is shown from a mast on the outer end of the Public wharf. (N2001-022.3)

Page 50 — Paragraph 108, last line
Add: Starboard hand spar light **buoy** QUG2 (146.4) is moored 1.3 miles WNW of the west tip of Harbour Island. (N2001-022.4)

Page 54 — Paragraph 134, line 8
Delete: 40 feet (12.2 m)
Replace by: 26 feet (8 m) (N2001-022.5)

CEN 302 — Lake Ontario, First Edition, 1996 —

Page 51 — After paragraph 137
Insert: ^{137.1} There is a privately maintained **light** on a mast near the SW end of the breakwater on the NE side of the harbour entrance. (C2001-006.1)

CEN 303 — Welland Canal and Lake Erie, First Edition, 1996 —

Page 31 — After paragraph 134
Insert: ^{134.1} **Caution.** — There is (2000) an area of shallower water in the slip along the line of the range. Depths along this area range from 27 feet (8.2 m) at the entrance to the slip to 23 feet (7 m) at the mid point, reducing to 17 feet (5.2 m) near the head of the slip. (C2001-044.1)

CEN 306 — Georgian Bay, First Edition, 1998 —

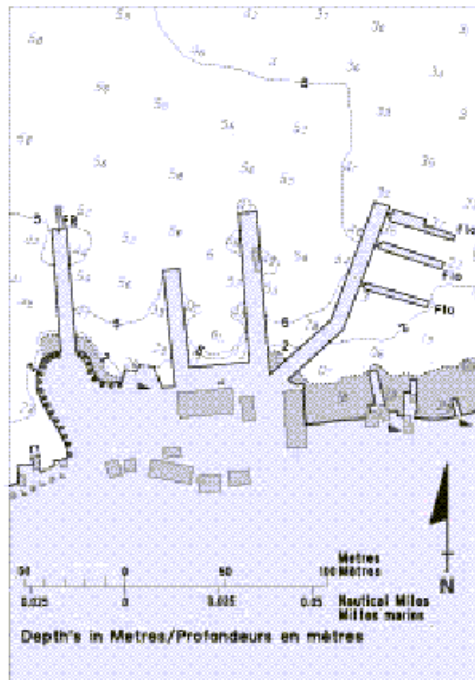
Page 112 — Paragraph 223, line 3
Delete: marked by a buoy (C2001-045.1)

**SECTION 4 - Edition 08/2001
SAILING DIRECTIONS AND SMALL CRAFT GUIDE CORRECTIONS**

Due to the poor quality of the LUMSDEN SOUTH Diagram (ATL 101 – N2001-019.9) and the ARNOLD’S COVE Diagram (ATL 102 – N2001-021.4) we are re-issuing them.

SECTION 4 - Edition 08/2001
SAILING DIRECTIONS AND SMALL CRAFT GUIDE CORRECTIONS

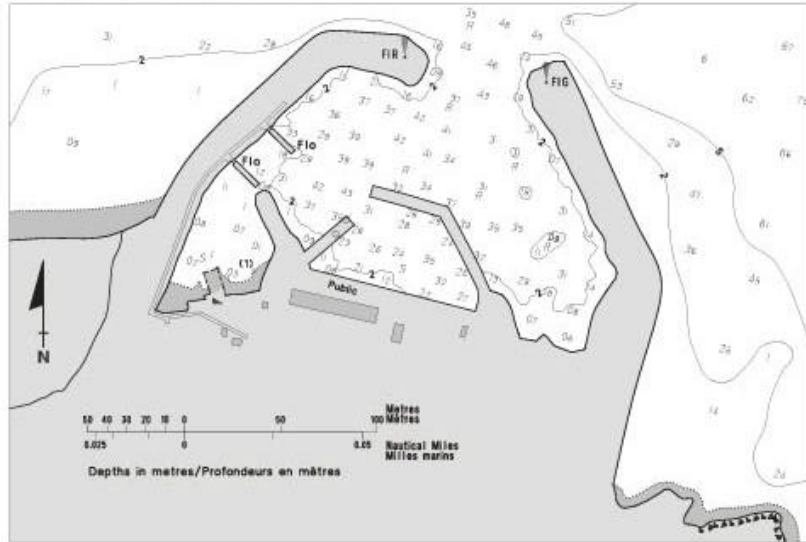
ARNOLD'S COVE Scale 1:3 000 Echelle



Sources: PWC and CHS surveys to 2000
Sources : TCP et SHC levés jusqu'à 2000

SECTION 4 - Edition 08/2001
SAILING DIRECTIONS AND SMALL CRAFT GUIDE CORRECTIONS

LUMSDEN SOUTH Scale 1:2 500 Échelle



Sources: Surveyed by CHS in 1992
and PWC in 1995 and 1999.

Sources: Levé par le SHC en 1992
et TPC en 1995 et 2000.

<D:\Web\graphics\menu\lumsden-south-sdd.pdf>

SECTION 5 – Edition 08/2001
LIST OF LIGHTS, BUOYS AND FOG SIGNALS CORRECTIONS

| No. | Name | Position ----- Latitude N. Longitude W. | Light Characteristics | Focal Height in m. above water | Nomi- nal Range | Description ----- Height in meters above ground | Remarks ----- Fog Signals |
|---------------------|---|---|--------------------------|--|-----------------------|--|--|
| NEWFOUNDLAND | | | | | | | |
| 71 | Little Burin Island | At eastern end of island. 46 58 49 55 11 30 | Fl W | 10s | 25.9 | 17 | Skeleton tower, black and white rectangular daymark. Flash 0.2 s; eclipse 9.8 s. Visible from 122° through S., W. and N. to 040°. Emergency light. Year round. Chart:4616 Edn 08/01 (N01-079) |
| 71.2 | Little Burin Island Fog Signal | At eastern end of island. 46 58 49 55 11 30 | | | | | Horn - Blast 3s; sil. 27s. Horn points 096°. Year round. Chart:4616 Edn 08/01 (N01-079) |
| 139.51 | Grey River Wharf | 47 35 08.5 57 06 45.9 | Fl G | 4s | | | Cylindrical mast. 2.6 Year round. Chart:4633 Edn 08/01 (N99-156) |
| 146.4 | Boat Passage Island light buoy QUG2 | 47 39 32.2 58 15 40.1 | F R | 4s | | | Red spar, marked "QUG2". Year round. Chart:4634 Edn 08/01 (N99-102) |
| 229.1 | Soldier's Rock light buoy NP6 | 51 37 42 56 36 51 | F R | 4s | | | Red, marked "NP6". Seasonal. Chart:4020 Edn 08/01 (N98-215) |
| 417.1 | Heart Island light buoy JV7 | 49 07 01.8 53 36 23.5 | F G | 4s | | | Green spar, marked "JV7". Seasonal. Chart:4858 Edn 08/01 (N98-045) |
| 419.52 | Walkers Point light buoy JV8 | 49 07 02.8 53 36 23.5 | F R | 4s | | | Red spar, marked "JV8". Seasonal. Chart:4858 Edn 08/01 (N98-119) |
| ATLANTIC | | | | | | | |
| 158 H4046 | Grindstone | | | | | | Delete from List. Chart:4130 Edn 08/01 (F01-030) |
| 666.8 | Andrew Island East cardinal light and whistle buoy PK | 45 17 36 60 52 58 | Q(3) W | 10s | | | Black, yellow and black, marked "PK". Seasonal. Chart:4233 Edn 08/01 (G00-021) |
| 672 H3460 | Canso range | S. of Lanigan Beach, near S. entrance to harbour. 45 19 56 60 58 48 | F R | | 10.4 | 14 | White structure, red vertical stripe. 8.5 Visible in line of range. Year round. |
| 673 H3460.1 | | 266°28' 384.3m from front. | F R | | 28.7 | 14 | White structure, red vertical stripe. 14.0 Visible in line of range. Year round. Chart:4281 Edn 08/01 (G00-035,036) |
| 1419.8 | Baie de Gaspé light buoy HD9 | N. of Pointe Sandy Beach. 48 50 37.6 64 24 45.1 | F G | 4s | | | Green, marked "HD9". Winter spar. Year round. Chart:4416 Edn 08/01 (L01-071) |

SECTION 5 – Edition 08/2001
LIST OF LIGHTS, BUOYS AND FOG SIGNALS CORRECTIONS

| No. | Name | Position ----- Latitude N. Longitude W. | Light Characteristics | Focal Height in m. above water | Nomi- nal Range | Description ----- Height in meters above ground | Remarks ----- Fog Signals |
|-----|------|--|--------------------------|--|-----------------------|--|---------------------------------|
|-----|------|--|--------------------------|--|-----------------------|--|---------------------------------|

ATLANTIC

| | | | | | | | | | |
|---------|--|--------------------------------------|---------------------------------|-------|-------|-------|--------------------------|--|---|
| 1672.1 | Pointe Noire Sector | 50 09 47.1 66 29 12.3 | F R Al W RW G Al GW | | 14.0 | | Skeleton tower. 16.6 | Red from 202° 41'47" to 206° 56'47"; Al RW from 206° 56'47" to 210° 56'47"; white from 210° 56'47" to 216° 56'47"; Al GW from 216°56'47" to 220°56'47"; green from 220°56'47" to 225°11'47". White sector indicates preferred channel. Year round. | Chart:1220 Edn 08/01 (L01-044) |
| 1707.1 | Mont-Joli light buoy IML-3 | 48 39 36 68 09 23.4 | F(5) Y | 20s | | | Yellow, marked "IML-3". | Seasonal. | Chart:1236 Edn 08/01 (L01-043) |
| 2105.72 | Pont Laviolette North | On bridge. 46 18 28.9 72 33 48 | | | | | | Year round. | Chart:1313 Edn. 08/01 |
| | Racon – (T) X & S Band | | | | | | | | |
| 2105.73 | Pont Laviolette South | On bridge. 46 18 24.2 72 33 38 | | | | | | Year round. | Chart:1313 Edn. 08/01 |
| | Racon (H) X & S Band | | | | | | | | |
| 2147.6 | Louiseville Entrance Channel light buoy SH20 | 46 12 48 72 55 07 | F R | 4s | | | Red spar, marked "SH20". | Seasonal. Maintained by Louiseville Township. | Chart:1312 Edn 08/01 (L01/060) |
| 2204.59 | St-Ours Lock cautionary light buoy DAN-Y | 45 51 39.9 73 08 51.5 | F Y | 4s | | | Yellow, marked "DAN-Y". | Seasonal.Maintained by Parcs Canada. | Chart:1350 Edn 08/01 (L01-071) |
| 2404.6 | St-Ours Lock cautionary light buoy DAN-X | 45 51 38.6 73 08 54 | F Y | 4s | | | Yellow, marked "DAN-X". | Seasonal. Maintained by Parcs Canada. | Chart:1350 Edn 08/01 (L01-083) |

INLAND WATERS

| | | | | | | | | | |
|-------|-----------------------------------|--------------------------|-----|----|-------|-------|-----------------------------|--|---|
| 503.1 | Oshawa Harbour light buoy MV8 | 43 51 52.4 78 49 17.5 | F R | 4s | | | Red spar, marked "MV8". | Year round. Privately maintained by Oshawa Harbour Commission. | Chart:2050 Edn 08/01 (B01-134) |
| 503.2 | Oshawa Harbour light buoy MV10 | 43 51 55 78 49 19.5 | F R | 4s | | | Red spar, marked "MV10". | Year round. Privately maintained by Oshawa Harbour Commission. | Chart:2050 Edn 08/01 (B01-135) |

SECTION 5 – Edition 08/2001
LIST OF LIGHTS, BUOYS AND FOG SIGNALS CORRECTIONS

| No. | Name | Position ----- Latitude N. Longitude W. | Light Characteristics | Focal Height in m. above water | Nomi- nal Range | Description ----- Height in meters above ground | Remarks ----- Fog Signals |
|----------------------|---|--|--------------------------|--|-----------------------|--|--|
| INLAND WATERS | | | | | | | |
| 503.3 | Oshawa Harbour light buoy MV12 | 43 51 57.6 78 49 21.2 | F R | 4s | | Red spar, marked "MV12". | Year round. Privately maintained by Oshawa Harbour Commission. |
| | | | | | | | Chart:2050 Edn 08/01 (B01-136) |
| 513.65 | Western Gap Information light buoy WKO-11 | 43 37 46.5 79 24 18.5 | F Y | 4s | | White and orange, marked "WKO-11". | Seasonal. |
| | | | | | | | Chart:2085 Edn 08/01 (B01/130) |
| 513.7 | Western Gap Information light buoy WKO-12 | 43 37 34.1 79 24 45.1 | F Y | 4s | | White and orange, marked "WKO-12". | Seasonal. |
| | | | | | | | Chart:2085 Edn 08/01 (B01/131) |
| 517.15 | Inner Harbour Information light buoy EKO-15 | 43 37 59.1 79 22 49.6 | F Y | 4s | | White and orange, marked "EKO-15". | Seasonal. |
| | | | | | | | Chart:2085 Edn 08/01 (B01/132) |
| 517.16 | Inner Harbour Information light buoy EKO-16 | 43 38 07 79 22 55.7 | F Y | 4s | | White and orange, marked "EKO-16". | Seasonal. |
| | | | | | | | Chart:2085 Edn 08/01 (B01/133) |
| 605 | Scudder wharf, Inner | On E. end of wharf. 41 48 48 82 39 31 | Fl R | 4s | 5.8 | 6 White cylindrical tower, red upper portion. 3.6 | Seasonal. Maintained by Pelee Township. |
| | | | | | | | Chart:2181 Edn 08/01 (B01-089) |
| 709.7 | Light buoy 29 (U.S.) | 42 30 35 82 42 21 | F G | 2.5s | | Green, marked "29". | Seasonal. |
| | | | | | | | Chart:14850(U.S.) Edn 08/01 |
| 709.8 | Light buoy 30 (U.S.) | 42 30 38 82 41 53 | F R | 4s | | Red, marked "30". | Seasonal. |
| | | | | | | | Chart:14850(U.S.) Edn 08/01 |
| 731 | Light 13 (U.S.) | 42 33 05 82 35 27.3 | Fl G | 2.5s | 7.3 | 6 White skeleton mast, green square daymark, marked "13". | Year round. |
| | | | | | | | Chart:14853 (U.S.) Edn 08/01 |
| 760.6 | Light buoy 58 (U.S.) | 42 53 20 82 28 14.5 | F R | 2.5s | | Red, marked "58". | Seasonal. |
| | | | | | | | Chart:14853(U.S.) Edn 08/01 |
| 980.2 | Cash Flow Rock | 45 58 02.5 81 33 56 | Fl R | 4s | 5.7 | 5 Cylindrical mast. | Seasonal. |
| | | | | | | | Chart:2205 Edn 08/01 |
| 1066.2 | Bayfield light buoy 108 (U.S.) | 46 30 03 84 19 38 | F R | 2.5s | | Red, marked "108". | Seasonal. |
| | | | | | | | Chart:14884(U.S.) Edn 08/01 |

**CANADIAN COAST GUARD
MARINE INFORMATION REPORT AND SUGGESTION SHEET**

Navigating Officer or Observer: _____ Captain: _____

Ship (or address) _____

If Merchant Vessel add Line or Company with Head Office address: _____

General locality: _____

Subject: _____

Approx. position: _____ Lat. _____ Long _____

Chart No. used to plot: _____ (Corrected to N/M No. _____ of 2000) _____ Publications

affected: *(Quote Volume and page)*

* Full details *(Attach additional sheets as necessary)*

Time (UTC) _____ Date _____

INSTRUCTIONS:

Mariners are requested to notify the responsible authorities when new or suspected dangers to navigation are discovered, changes are observed in aids to navigation, or corrections to publications are seen to be necessary.

** In the case of new or suspected dangers to navigation, it is important that all details be given in order to aid with future investigations. Items of interest include heights, depths, physical description, type of bottom and equipment method used to position the item. It is helpful to mark details on chart, which will be promptly replaced by the Canadian Hydrographic Service.*

Reports should be made to the nearest Marine Communications and Traffic Services Centre and should be confirmed in writing to:

Director, Navigation Systems
Canadian Coast Guard
Department of Fisheries and Oceans
Ottawa, Ontario, K1A 0E6

In the case of information Canadian
navigational aids or the List Department
of Lights, Buoys and Fog Signals.

OR

Dominion Hydrographer
Canadian Hydrographic Service
Department of Fisheries and Oceans
Ottawa, Ontario, K1A 0E6

In the case of new or suspected
dangers to navigation, or where
corrections to "Sailing Directions"
appear to be necessary.