



# NOTICES TO MARINERS

## EASTERN EDITION

Published monthly by the



## CANADIAN COAST GUARD

### CONTENTS

	<b>Page</b>
Section 1 Safety and General Information .....	1 to 7
Section 2 Chart Corrections.....	8 to 22
Section 3 Radio Aids to Marine Navigation Corrections .....	23, 24
Section 4 Sailing Directions and Small Craft Guide Corrections.....	25 to 27
Section 5 Light List Corrections .....	28 to 31

Marine Programs Directorate  
Aids to Navigation



Internet: <http://www.notmar.com>

## EXPLANATORY NOTES

**Geographical positions** refer directly to the graduations of the largest scale Canadian Hydrographic chart unless otherwise indicated.

**Bearings** refer to the true compass and are measured clockwise from 000° (North) clockwise to 359°; those relating to lights are from seaward.

**Visibility** of lights is that in clear weather.

**Depths** - The units used for soundings (metres, fathoms or feet) are stated in the title of each chart.

**Elevations** are normally given above Higher High Water, Large Tides unless otherwise indicated.

**Distances** may be calculated as follows:

1 nautical mile	= 1 852 metres (6,076.1 feet)
1 statute mile	= 1 609.3 metres (5,280 feet)
1 metre	= 3.28 feet

**Temporary & Preliminary Notices** are indicated by a (T) or a (P) before the chart action. Please note that Nautical charts are not hand amended by the Canadian Hydrographic Service for Temporary (T) and Preliminary (P) Notices. It is recommended that mariners chart these corrections in pencil. Listing of charts affected by Temporary and Preliminary Notices are revised and promulgated quarterly in Section 1 of the Monthly Edition.

**Please note that, in addition to the temporary and preliminary changes normally advertised as (T) and (P) Notices, there are a significant number of permanent changes to navigational aids that have been advertised as Preliminary Notices to Mariners while charts are being updated for new editions.**

**Marine Information Report & Suggestion Sheet** - Mariners are requested to notify the responsible authorities when new or suspected dangers to navigation are discovered, changes observed in aids to navigation or corrections to publications are seen to be necessary. Such communications can be made using the *Marine Information Report & Suggestion Sheet* inserted on the last page of each monthly edition of *Notices to Mariners*.

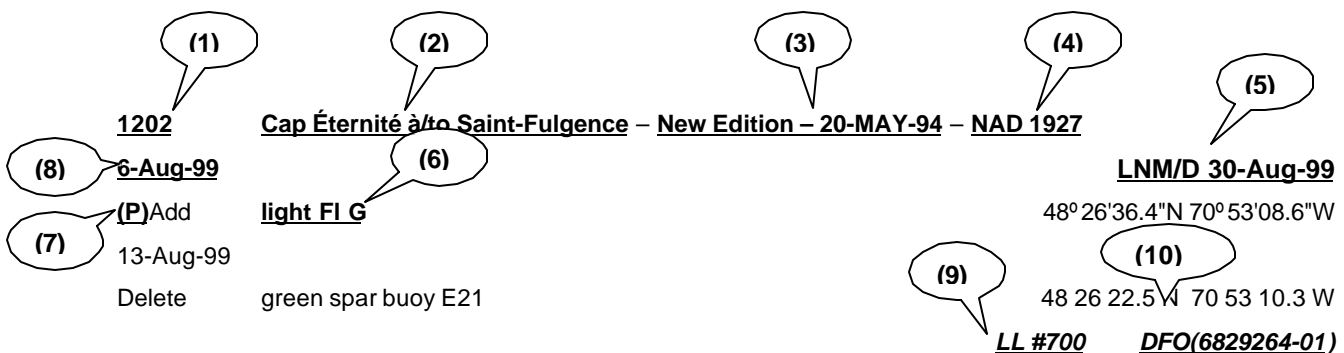
**Monthly edition of Notices to Mariners** - *Notices to Mariners* are issued free of charge on a monthly basis. Mariners now have a choice between specific *Regional* issue(s) they wish to receive. Requests to be placed on or removed from the mailing list should be made by using the form inserted on page *xiii* of each monthly edition. Notification of changes to the mailing addresses, regional issues and/or number of copies required should also be transmitted by means of this form.

**Canadian Nautical Charts & Publications** - A source list of *Canadian Nautical Charts & publications* is published in *Notice No. 14* of the current *Annual Edition of Notices to Mariners*. The source supply and the prices effective at the time of printing are listed. This list is periodically updated in the monthly edition of *Notices to Mariners*.

**NOTE: Cette publication est aussi disponible en français.**

## CHART CORRECTIONS - SECTION 2

Corrections to nautical charts will be listed in numeric order by chart number. Each chart correction listed applies only to that particular chart. Related charts, if any, will have their own specific correction listed separately. Users should also refer to CHS Chart 1 Symbols, Abbreviations Terms for additional information pertaining to the correction of charts. The illustration below describes the elements that will comprise a typical Section 2 chart correction.



- 1 - Chart Number
- 2 - Chart Title
- 3 - Chart's latest New Edition date
- 4 - Horizontal Chart Datum
- 5 - Last Correction

- 6 - Chart action
- 7 - Notice type
- 8 - Weekly chart correction date
- 9 - List of light number
- 10 - Record reference number

The last correction number is identified with the **L**NM/D or **L**ast **N**otice to **M**ariners Number / **D**ate. This number is expressed in either old notice number format (ex.: 594/99) or in day-month-year format which is the date known as the weekly chart correction date shown in the above diagram as item (8).

## ADVISORY

### **NOTICES TO SHIPPING (WRITTEN AND BROADCAST)**

The Canadian Coast Guard is implementing a number of changes to the aids to navigation system in Canada.

These changes are advertised as Notices to Shipping (Broadcast and Written) by the Canadian Coast Guard and are followed up with Notices to Mariners, then charts are updated by hand correction, reprints or new editions.

The publication of Notices to Mariners and chart revisions are being delayed by the volume of changes that are taking place.

Mariners are advised that all relevant Written Notices to Shipping should be kept until superseded by Notices to Mariners or through revised charts issued by the Canadian Hydrographic Service.

Written Notices to Shipping are published weekly and are available from local Canadian Coast Guard Offices.

The Canadian Hydrographic Service is reviewing the impact of these changes with the Canadian Coast Guard and together we are preparing an action plan on the issuing of chart revisions.

For further information contact your local Canadian Coast Guard office.

#### **Newfoundland**

St. John's MCTS Centre  
Phone: (709) 772-2083  
Fax: (709) 772-5369

#### **Maritimes**

Maritimes Regional Operations Centre  
Toll Free in Maritimes 1-800-565-1633  
Phone: (902) 426-6030  
Fax: (902) 426-6334  
<http://www.mar.dfo.mpo.gc.ca/cg/ops/roc.htm>  
Website E-Mail: ROCWeb@mar.dfo-mpo.gc.ca

#### **Quebec**

Quebec Regional Operations Centre GC\SO\COR  
Operational Information Officer  
Phone: (418) 648-5410  
Fax: (418) 648-7244  
E-Mail: OPSAVIS@dfo-mpo.gc.ca

#### **Central & Arctic**

Sarnia MCTS Centre  
Toll Free in Ontario 1-800-265-0237  
Phone: (519) 337-6360  
Fax: (519) 337-2498

#### **Pacific**

Pacific Regional Marine Information Centre  
Phone: (604) 666-6011  
Fax: (604) 666-8453  
E-mail: RMIC-Pacific@pac.dfo-mpo.gc.ca  
Notice to Shipping information  
[http://www.pacific.ccg-gcc.gc.ca/mcts-sctm/notship/index\\_e.htm](http://www.pacific.ccg-gcc.gc.ca/mcts-sctm/notship/index_e.htm)

## DGPS FULLY OPERATIONAL SERVICE

The Canadian Coast Guard (CCG) announces that the Differential Global Positioning Service (DGPS) Fully Operational Service (FOS) is available for positioning and navigation.

FOS means the service will provide a DGPS broadcast using the type 9 RTCM message for pseudorange corrections at a data transmission rate of 200 baud. Refer to Radio Aids to Marine Navigation (RAMN) for estimated advertised coverage for each differential station.

Users are also advised that differential corrections are based on the NAD 83 datum position of the reference station antenna and positions obtained using DGPS should be referenced to this coordinate system only. DGPS receivers must be set to the WGS 84 datum in order to obtain optimum positioning accuracy.

<b>Table of DGPS Reference Stations in Canada</b>						
<b>Station Name</b>	<b>Id. Nos of reference stations</b>	<b>DGPS Station ID</b>	<b>Geog. Position</b>		<b>Frequency [khz]</b>	<b>Bit/s</b>
			<b>Latitude</b>	<b>Longitude</b>		
Cape Race, NL	338,339	940	46 46 N	53 11 W	315	200
Cape Ray, NL	340,341	942	47 38 N	59 14 W	288	200
Cape Norman, NL	342,343	944	51 30 N	55 49 W	310	200
Rigolet, NL	344,345	946	54 11 N	58 27 W	299	200
Partridge Island, NB	326,327	939	45 14 N	66 03 W	295	200
Pt. Escuminac, NB	332,333	936	47 04 N	64 48 W	319	200
Fox Island, NS	336,337	934	45 20 N	61 05 W	307	200
Western Head, NS	334,335	935	43 59 N	64 40 W	312	200
Hartlen Point, NS	330,331	937	44 36 N	63 27 W	298	200
St.-Jean-sur-Richelieu, QC	312,313	929	45 19 N	73 19 W	296	200
Lauzon, QC	316,317	927	46 49 N	71 10 W	309	200
Rivière-du-Loup, QC	318,319	926	47 46 N	69 36 W	300	200
Moisie, QC	320,321	925	50 12 N	66 07 W	313	200
Warton, ON	310,311	918	44 45 N	81 07 W	286	200
Cardinal, ON	308,309	919	44 47 N	75 25 W	306	200
Alert Bay, BC	300,301	909	50 35 N	126 55 W	309	200
Amphitrite Pt., BC	302,303	908	48 55 N	125 33 W	315	200
Richmond, BC	304,305	907	49 11 N	123 07 W	320	200
Sandspit, BC	306,307	906	53 14 N	131 49 W	300	200

### **DGPS RECEIVER - WARNING**

The Canadian Coast Guard's Differential Global Positioning System (DGPS) broadcast contains built in health information designed to alert a DGPS user receiver of an out of tolerance or fault condition. During testing, it was found that some user DGPS receivers did not process the health information properly. Improper processing by a user equipment can result in incorrect positions.

Please contact your DGPS manufacturer or supplier to ensure that your receiver is capable of processing the DGPS Reference Station Health information correctly.

### **DGPS USER ALERT**

The Canadian Coast Guard received reports in March 97 of DGPS receivers apparently ignoring the broadcast alarm which should signal the immediate discontinuation of a particular satellite correction. Reports indicate that some user equipment does not properly recognize this "do-not-use" correction flag and as a result erroneously processes it as a correction. This can result in position errors as large as 15 kilometers while the receiver is in DGPS mode. DGPS users are advised that they should contact the manufacturer of their equipment immediately to determine if they require a receiver upgrade.

## **DGPS station anomaly report / Rapport d'anomalie des stations DGPS**

With the purpose of constantly evaluating the quality of the DGPS service offered, the Canadian Coast Guard is providing the mariner with the following anomaly report. This report will allow us to get well-supported information concerning the anomaly and thus, will facilitate the identification of the origin of the problem. Please fill accordingly each section of this report and forward it by the suggested ways. You will find a legend at the end of this document.

Avec le souci d'évaluer constamment la qualité du service DGPS offert, la Garde côtière met à la disposition du navigateur le présent rapport d'anomalie. Ce rapport servira à bien documenter l'anomalie et, de ce fait, facilitera l'identification ou la recherche de la source du problème. Nous vous prions de bien remplir chaque section de ce rapport et de l'acheminer de la façon suggérée. Vous trouverez une légende à la fin de ce document.

### **User informations / Renseignements sur l'utilisateur**

Vessel name / Nom du navire: \_\_\_\_\_ Destination: \_\_\_\_\_

Vessel position at the beginning of the anomaly /  
Position du navire au début de l'anomalie : \_\_\_\_\_

Vessel position at the end of the anomaly /  
Position du navire à la fin de l'anomalie : \_\_\_\_\_

### **Anomaly report / Rapport d'anomalie**

Date and time of the anomaly / Date et heure de l'anomalie: \_\_\_\_\_ Duration / Durée: \_\_\_\_\_

Number of satellites tracked on GPS receiver / Nombre de satellites reçu par le récepteur: \_\_\_\_\_

DGPS site using / Station DGPS utilisée: Freq.: \_\_\_\_\_ kHz SS: \_\_\_\_\_ dB SNR: \_\_\_\_\_ dB

DOP Geometry / Géométrie DOP : \_\_\_\_\_

User receiver operates correctly with other DGPS sites? /

Votre équipement DGPS fonctionne-t-il normalement à l'utilisation d'autres stations DGPS?: Yes/ Oui \_\_\_ No / Non \_\_\_

Comments / Commentaires: \_\_\_\_\_  
\_\_\_\_\_  
\_\_\_\_\_

Point of contact / Personne-ressource: Name/ Nom: \_\_\_\_\_

Phone / Téléphone : \_\_\_\_\_

### **Weather conditions / Conditions météo**

Winds / Vents : Direction: \_\_\_\_\_ Speed / Vitesse: \_\_\_\_\_ KTS

Temp. °C: \_\_\_\_\_ VIS: \_\_\_\_\_ N.M.

Sea State / État de la mer : \_\_\_\_\_

Bearing and range to electrical storm /

Direction et distance de l'orage : \_\_\_\_\_

Time of the storm / Heure de l'orage: \_\_\_\_\_ UTC

**Essential informations on user equipment to fill / Renseignements indispensables sur l'équipement à remplir:**

### **User equipment informations / Renseignements sur l'équipement**

GPS receiver / Récepteur GPS: Make / Fabricant: \_\_\_\_\_ Model: \_\_\_\_\_

DGPS beacon receiver / Démodulateur DGPS: Make / Fabricant : \_\_\_\_\_ Model: \_\_\_\_\_

Gyro interface with GPS / Gyro intégré avec le GPS? Yes / Oui : \_\_\_\_\_ No / Non : \_\_\_\_\_

DGPS interfaced with an ECDIS / DGPS intégré dans un SVCEI? Yes / Oui: \_\_\_\_\_ No / Non : \_\_\_\_\_

If yes, please fill below / Si oui, S.V.P. compléter ci-dessous:

ECDIS / SVCEI: Make / Fabricant: \_\_\_\_\_ Model: \_\_\_\_\_

Radar image interfaced / Image radar intégrée?: Yes / Oui: \_\_\_\_\_ No / Non: \_\_\_\_\_

Gyro interfaced with ECDIS / Gyro intégré avec SVCEI? Yes / Oui: \_\_\_\_\_ No / Non: \_\_\_\_\_

Permanent installation or in evaluation / Installation permanente ou en évaluation : \_\_\_\_\_

**This report can be sent the following ways / Ce rapport peut être acheminé selon les façons suivantes:**

- 1) Fax / Par télécopieur : (613) 998-8428  
Attention: Aids to Navigation / Aides à la navigation
  
- 2) Mail / Par la poste: Director, Navigation Systems Branch  
Department of Fisheries and Oceans  
200 Kent Street, Station 5130  
Ottawa, ON  
K1A 0E6  
  
Directeur, Direction des systèmes à la navigation maritimes  
Ministère des Pêches et Océans  
200, rue Kent, Station 5130  
Ottawa, ON  
K1A 0E6

**Canada**

**Legend/Légende**

- Position** : Position can be provided by latitude, longitude, bearing and distance, location of a buoy, etc.  
La position peut être donnée en latitude, longitude, relèvement et distance, emplacement de bouée, etc.
- KTS** : Wind speed in knots / Vitesse du vent en noeuds.
- N.M.** : Visibility in Nautical Miles / Visibilité en milles nautiques.
- Freq. kHz** : Frequency in kilohertz / Fréquence en kilohertz .
- SS** : Signal strength in decibel / Force de signal en décibel.
- SNR** : Signal to noise ratio in decibel / Rapport signal-bruit en décibel .
- DOP (dilution of precision)** : Measure of the geometrical «strength » of the GPS satellite configuration. The DOP is measured on a scale of 1 to 10 / Mesure de la « force » géométrique de la configuration satellite. Le DOP est mesuré sur une échelle de 1 à 10
- SVCEI / ECDIS** : Electronic Chart Display and Information System / Système de Visualisation de Cartes  
Electroniques et d'Information .

# MONTHLY EDITION OF NOTICES TO MARINERS

## MAILING LIST CHANGES

Leader, Notices to Mariners  
Navigation Aids  
Navigation Systems Branch  
Canadian Coast Guard  
Department of Fisheries and Oceans  
Ottawa, ON  
K1A 0E6

Telephone (613) 990-3037  
Facsimile (613) 998-8428

Please indicate which edition you would like to receive.

**EASTERN EDITION** (will be comprised of Arctic, Newfoundland, Maritimes, Gulf & River St. Lawrence and Central areas) \_\_\_\_\_

**WESTERN EDITION** (will be comprised of Arctic and Pacific areas) \_\_\_\_\_

**ADD** \_\_\_\_\_ **AMEND** \_\_\_\_\_ **REMOVE** \_\_\_\_\_ **NO. OF COPIES** \_\_\_\_\_

OLD ADDRESS	
NAME	
STREET	APT
CITY	POSTAL CODE
PROVINCE	COUNTRY
NEW ADDRESS	
NAME	
STREET	APT
CITY	POSTAL CODE
PROVINCE	COUNTRY

*ID number above address on label*

*or*

*Attach complete address label to this sheet*

## INDEX

CANADA - 96 HOURS NOTIFICATION PRIOR TO ENTERING CANADIAN WATERS - CAUTION.....	1
NOTICE TO USERS .....	1
CANADIAN COAST GUARD PUBLICATION – AMENDMENT TO THE RADIO AIDS TO MARINE NAVIGATION (ATLANTIC, ST. LAWRENCE, GREAT LAKES, LAKE WINNIPEG AND EASTERN ARCTIC) PUBLICATION – 2003 – PART 1.....	23
CANADIAN COAST GUARD PUBLICATION – AMENDMENT TO THE RADIO AIDS TO MARINE NAVIGATION (ATLANTIC, ST. LAWRENCE, GREAT LAKES, LAKE WINNIPEG AND EASTERN ARCTIC) PUBLICATION – 2003 – .....	23
CANADIAN COAST GUARD PUBLICATION – AMENDMENT TO THE RADIO AIDS TO MARINE NAVIGATION (ATLANTIC, ST. LAWRENCE, GREAT LAKES, LAKE WINNIPEG AND EASTERN ARCTIC) PUBLICATION – 2003 – .....	23, 24
*817    CANADIAN COAST GUARD PUBLICATION - AMENDMENT TO THE 2003 ANNUAL EDITION OF NOTICES TO MARINERS. ....	1
*813    CANADIAN HYDROGRAPHIC SERVICE - CHARTS.....	1
*815    CANADIAN HYDROGRAPHIC SERVICE - RASTER ELECTRONIC NAVIGATION CHARTS.....	2
*816    CANADIAN HYDROGRAPHIC SERVICE - S57 NAVIGATION CHARTS .....	2
*814    CANADIAN HYDROGRAPHIC SERVICE - CUMULATIVE CHART CORRECTION LIST.....	3
*811(P)    GEORGIAN BAY - SMALL CRAFT ROUTE NORTH - NARROW ISLAND - DAY BEACON RANGES TO BE DISCONTINUED. ....	7
*809    INLAND WATERS - MANITOBA - LAKE WINNIPEG - MUKUTAWA RIVER APPROACH - SPAR BUOYS DISCONTINUED. ....	7
*807    LAKE ONTARIO - BURLINGTON CANAL ENTRANCE - TEMPORARY LIGHT BUOY. ....	7
*812(P)    LOWER LAKE GEORGE - DAY BEACON RANGE TO BE DISCONTINUED.....	7
*810    MONTRÉAL HARBOUR - MOORING PROHIBITED AT SECTIONS 101 AND 102 IN MONTREAL HARBOUR. ....	7
*804    NEW BRUNSWICK - CAMPOBELLO ISLAND - CHOCOLATE COVE - LIGHT DISCONTINUED. ....	6
*803    NOVA SCOTIA - LIVERPOOL HARBOUR - LIGHT BUOYS DISCONTINUED.....	6
*801    NOVA SCOTIA, SOUTHEAST COAST - COFFIN ISLAND AND LIVERPOOL BAY - LIGHT BUOYS DISCONTINUED.....	6
*806    ONTARIO - TRENT-SEVERN WATERWAY - OCTONABEE RIVER - LAKEFIELD - PIER UNDER RECONSTRUCTION. ....	7
*802    PRINCE EDWARD ISLAND - NORTH RUSTICO AND NEW LONDON - LIGHTED BUOYS REPLACED. ....	6
*805    TRANSPORT CANADA PUBLICATIONS - SHIP SAFETY BULLETINS (TP-3231) - 2003.....	6



## NUMERICAL INDEX OF CANADIAN CHARTS AFFECTED

Chart No.	Page	Chart No.	Page	Chart No.	Page
1223	8	4395	1	7125	2
L/C1236	8	4445	1		
1313	8	L/C4463	1		
1317	8	4521	1		
1433	8	4529	2		
1510	9	4584	2		
1512	9	4624	18		
1513	9	4626	18		
2024	1	4634	18		
2026	9	4635	2		
2067	9, 10	4639	19		
L/C2120	10, 11	4653	2		
L/C2122	11 - 15	4667	2		
L/C2123	15	4682	2		
2181	15, 16	4767	2		
L/C2300	16	4774	2		
2305	16	4847	19		
4001	16	4849	20		
L/C4002	17	4906	20		
4003	17	4920	20		
L/C4006	17	4050	20		
4011	17	L/C4951	20		
4012	17	L/C4952	20		
4013	17	4954	20		
4023	17	4980	21		
4047	17	5133	2		
4140	17	5140	2		
4202	18	6021	21		
4211	1	6023	21		
L/C4230	18	6259	21		
4367	1	6263	22		

**SECTION 1 – Edition 08/2003  
SAFETY AND GENERAL INFORMATION**

**CANADA - 96 HOURS NOTIFICATION PRIOR TO ENTERING CANADIAN WATERS - CAUTION.**

Effective October 11<sup>th</sup>, 2001, 0000 UTC, all vessels that are:

- a) of 500 gross tonnage or more;
- b) engaged in towing or pushing a vessel, where the combined tonnage of the ship and the vessel being towed or pushed is 500 tons gross tonnage or more; or
- c) carrying a pollutant or dangerous goods, or engaged in towing or pushing a vessel carrying a pollutant or dangerous goods;

**must request clearance 96 hours prior to entering Canadian waters from seaward**, or as soon as practical where the estimated time of arrival of the ship in Canadian waters is less than 96 hours after the time the ship departed its last port of call. This will remain in effect until further notice.

**NOTICE TO USERS**

**ANNOUNCEMENT REGARDING CANADIAN HYDROGRAPHIC SERVICE CHARTS PURCHASED BETWEEN AUGUST 2002 AND MARCH 2003.**

We recently discovered that some Canadian Hydrographic Service charts purchased between August 2002 and March 2003 exhibit poor durability.

Such durability issues may include ink that erases too easily or flakes off, charts that don't withstand folding nor hold up as well as they should after contact with moisture. These charts can be easily identified by the existence of a white chalky coating sitting loosely on the surface of the paper. This coating can be rubbed off the paper and onto hands with normal handling. This is due to a manufacturing defect where coating was improperly applied to the paper.

Testing charts for this condition is best done by scratching a white area of the chart with a fingernail. Affected charts will leave a chalky white substance on the fingernail.

If you own any charts from this time frame that exhibit this behaviour, contact your dealer to arrange for free replacements.

We apologize for any inconvenience caused by this situation and have taken steps to prevent this from happening in the future.

**\*817 CANADIAN COAST GUARD PUBLICATION - AMENDMENT TO THE 2003 ANNUAL EDITION OF NOTICES TO MARINERS.**

Page D28-2

**Insert the following after paragraph 9 and renumber the remaining paragraphs accordingly**

- 10** Mariners are reminded that distress flares/signals as described in Annex IV of the Collision Regulations are for the use of a person or persons who are in distress and require immediate assistance. Any other use of distress flares is contrary to the *Canadian Shipping Act* (CSA) and the International Convention for the Safety of Life At Sea (SOLAS). Organizations wishing to conduct training in the use of flares are encouraged to contact the flare manufacturer for information on where/how to obtain training aids.

**\*813 CANADIAN HYDROGRAPHIC SERVICE - CHARTS**

CHARTS	MAIN TITLE	SCALE	PUBLISHED	CAT#	PRICE
<b>New Editions</b>	All temporary and preliminary notices affecting the previous versions of the following charts are now cancelled. For any outstanding notices please consult section 2 of this edition.				
2024	Buckhorn to/àBobcaygeon including/y compris Chemong Lake	1:20 000	16-MAY-2003	3	\$33.00
4211	Cape Lahave to/àLiverpool Bay	1:37 500	20-JUN-2003	1	\$20.00
4367	Flint Island to/àCape Smoky	1:75 185	03-APR-2003	1	\$20.00
4395	Lahave River Riverport to/àConquerall Bank	1:12 150	04-JUL-2003	1	\$20.00
4445	Merigomish Harbour	1:18 232	23-MAY-2003	1	\$20.00
L/C4463	Chéticamp to/àCape Mabou	1:75 000	27-JUN-2003	1	\$20.00
4521	Baie Verte	1:25 000	04-JUN-2003	1	\$20.00

**SECTION 1 – Edition 08/2003  
SAFETY AND GENERAL INFORMATION**

CHARTS	MAIN TITLE	SCALE	PUBLISHED	CAT#	PRICE
<b>New Editions</b>	All temporary and preliminary notices affecting the previous versions of the following charts are now cancelled. For any outstanding notices please consult section 2 of this edition.				
4529	Fogo Harbour Seal Cove and Approaches/et les approches	1:20 000	13-JUN-2003	1	\$20.00
4584	White Bay - Southern Part / Partie Sud	1:73 500	11-JUL-2003	1	\$15.00
4635	Cape Ray to/àLa Poile Bay	1:75 000	30-MAY-2003	1	\$20.00
4653	Bay of Islands	1:50 000	30-MAY-2003	1	\$20.00
4667	Savage Cove to/àSt. Barbe Bay	1:24 300	27-JUN-2003	1	\$20.00
4682	Larkin Point to/àCape Anguille	1:20 000	27-JUN-2003	1	\$20.00
4767	Saglek Bay Anchorage/Mouillage	1:17 500	18-JUL-2003	1	\$20.00
4774	Approaches to/approches àWilliams Harbor	1:30 000	04-JUL-2003	1	\$20.00
5133	Domino Point to/àCape North	----	27-JUN-2003	1	\$20.00
5140	South Green Island to/àTicoralak Island	1:50 000	27-JUN-2003	1	\$20.00
7125	Pike-Resor Channel	1:37 500	20-JUN-2003	4	\$20.00

**\*815 CANADIAN HYDROGRAPHIC SERVICE - RASTER ELECTRONIC NAVIGATION CHARTS**

**Notes: (1) The following ENC products are only available from:**

**Nautical Data International Inc.  
P.O. Box 127, Station C  
St. John's, Newfoundland  
A1C 5H5  
Telephone: 1-800-563-0634 or 1-709-576-0634  
Facsimile: 709-576-0636**

**(2) For licence information and rates please contact the distributor,  
Nautical Data International Inc. (NDI) at the above-mentioned address.**

CHARTS	MAIN TITLE	PUBLISHED	PRICE
<b>New Chart</b>	All temporary and preliminary notices affecting the previous versions of the following chart is now cancelled. For any outstanding notices please consult section 2 of this edition.		
3053R/M	Shuswap Lake		See Note 2
<b>New Editions</b>	All temporary and preliminary notices affecting the previous versions of the following charts are now cancelled. For any outstanding notices please consult section 2 of this edition.		
4381R/M	Mahone Bay	31-JAN-2003	See Note 2
4391R/M	Lahave River Conquerall Bank to/àBridgewater	20-DEC-2002	See Note 2
4954R/M	Chenal du Havre de la Grande Entrée	21-FEB-2003	See Note 2
4956R/M	Cap-aux-Meules	21-FEB-2003	See Note 2

**\*816 CANADIAN HYDROGRAPHIC SERVICE - S57 NAVIGATION CHARTS**

**Notes: (1) The following ENC products are only available from:**

**Nautical Data International Inc.  
P.O. Box 127, Station C  
St. John's, Newfoundland  
A1C 5H5  
Telephone: 1-800-563-0634 or 1-709-576-0634  
Facsimile: 709-576-0636**

**(2) For licence information and rates please contact the distributor,  
Nautical Data International Inc. (NDI) at the above-mentioned address.**

RELEASED PRODUCTS	
S-57 ENC NUMBER	CHART TITLE
CA470318	Fitz Hugh Channel to Lama Passage
CA576268	Quai / Wharf Belledune
CA570006	Active Pass
CA570007	Porlier Pass
CA570008	Montague Harbour
CA470042	Quatsino Sound

**SECTION 1 – Edition 08/2003  
SAFETY AND GENERAL INFORMATION**

<b>RELEASED PRODUCTS</b>	
<b>S-57 ENC NUMBER</b>	<b>CHART TITLE</b>
CA470074	Approaches to/Approches à Prince Rupert Harbour
CA573008	Toronto Harbour
CA576096	International Piers
CA576097	North Sydney
CA576098	Sydney River
CA576099	Sydney Wharves/Quais
CA576100	Sydport

**\*814 CANADIAN HYDROGRAPHIC SERVICE - Cumulative chart correction list.**

The accompanying correction list is a cumulative listing of charts affected by Notices to Mariners from 02-JUN-2003 to 29-AUG-2003.

<b>Chart No.</b>	<b>Notices to Mariners Edition Date</b>
1203	13-JUN-2003
1221	13-JUN-2003
1223	29-AUG-2003
1230	27-JUN-2003
1235	13-JUN-2003
L/C1236	29-AUG-2003, 27-JUN-2003
1312	13-JUN-2003
1313	29-AUG-2003, (T)04-JUL-2003, 20-JUN-2003
1317	(P)22-AUG-2003, 18-JUL-2003, (P)18-JUL-2003, 13-JUN-2003
1350	13-JUN-2003
1351	13-JUN-2003
1409	18-JUL-2003, 13-JUN-2003
1410	25-JUL-2003, 13-JUN-2003
1433	08-AUG-2003
1510	22-AUG-2003, (P)13-JUN-2003
1512	22-AUG-2003, 18-JUL-2003
1513	08-AUG-2003
2006	18-JUL-2003
2024	(16-MAY-2003 New Edition Advertised)
2026	29-AUG-2003
2028	20-JUN-2003, 13-JUN-2003
2067	22-AUG-2003, 01-AUG-2003, 11-JUL-2003
2077	13-JUN-2003
2086	11-JUL-2003, 13-JUN-2003
L/C2120	01-AUG-2003, 18-JUL-2003, 11-JUL-2003, (P)11-JUL-2003, 04-JUL-2003, (P)04-JUL-2003, 27-JUN-2003, (P)27-JUN-2003
L/C2122	22-AUG-2003, 08-AUG-2003, 27-JUN-2003
L/C2123	08-AUG-2003, 27-JUN-2003
2181	29-AUG-2003, 27-JUN-2003
2202	20-JUN-2003, 13-JUN-2003
2203	13-JUN-2003
2205	13-JUN-2003
2218	13-JUN-2003
2222	27-JUN-2003
L/C2228	25-JUL-2003
2241	20-JUN-2003
L/C2243	13-JUN-2003, (P)13-JUN-2003, (T)13-JUN-2003
2257	13-JUN-2003, (P)13-JUN-2003
2260	13-JUN-2003
2261	25-JUL-2003
2268	13-JUN-2003, (P)13-JUN-2003
2283	06-JUN-2003
2289	13-JUN-2003

**SECTION 1 – Edition 08/2003  
SAFETY AND GENERAL INFORMATION**

Chart No.	Notices to Mariners Edition Date
2291	25-JUL-2003, 20-JUN-2003
2299	13-JUN-2003, (P)13-JUN-2003
L/C2300	01-AUG-2003
2305	08-AUG-2003
4001	08-AUG-2003, 25-JUL-2003, (T)11-JUL-2003
L/C4002	08-AUG-2003
4003	08-AUG-2003, (T)11-JUL-2003, 04-JUL-2003, (T)04-JUL-2003, 20-JUN-2003
L/C4006	08-AUG-2003, (T)11-JUL-2003, 04-JUL-2003
4011	08-AUG-2003, 04-JUL-2003, 20-JUN-2003
4012	08-AUG-2003
4013	08-AUG-2003
4015	(28-MAR-2003 New Edition Advertised)
4016	(T)04-JUL-2003, (06-JUN-2003 New Edition Advertised)
4017	(T)04-JUL-2003, 20-JUN-2003
4022	(17-JAN-2003 New Edition Advertised)
4023	08-AUG-2003
L/C4049	(T)04-JUL-2003
4117	04-JUL-2003, 20-JUN-2003
4140	29-AUG-2003
4202	29-AUG-2003
4209	25-JUL-2003
4211	(20-JUN-2003 New Edition Advertised)
L/C4227	13-JUN-2003
L/C4230	08-AUG-2003
4241	25-JUL-2003
4245	18-JUL-2003
4275	11-JUL-2003
4306	20-JUN-2003
4307	20-JUN-2003
4308	(21-MAR-2003 New Edition Advertised)
4335	20-JUN-2003
4342	04-JUL-2003, (P)04-JUL-2003
4365	20-JUN-2003
4367	(03-APR-2003 New Edition Advertised)
4384	(10-JAN-2003 New Edition Advertised)
4395	(04-JUL-2003 New Edition Advertised)
4402	11-JUL-2003
4403	(04-APR-2003 New Edition Advertised)
4419	18-JUL-2003
4425	18-JUL-2003
4429	13-JUN-2003
4437	(14-MAR-2003 New Edition Advertised)
4445	(23-MAY-2003 New Edition Advertised)
4450	(21-MAR-2003 New Edition Advertised)
4460	(30-MAY-2003 New Edition Advertised)
L/C4463	(27-JUN-2003 New Edition Advertised)
4474	27-JUN-2003
4486	06-JUN-2003
4498	(20-JUN-2003 New Edition Advertised)
4504	(23-MAY-2003 New Edition Advertised)
4509	(06-JUN-2003 New Edition Advertised)
4514	(23-MAY-2003 New Edition Advertised)
4520	(T)04-JUL-2003
4521	(04-JUN-2003 New Edition Advertised)
4524	(04-JUL-2003 New Edition Advertised)
4529	(13-JUN-2003 New Edition Advertised)
4584	(11-JUL-2003 New Edition Advertised)
4616	(06-JUN-2003 New Edition Advertised)

**SECTION 1 – Edition 08/2003  
SAFETY AND GENERAL INFORMATION**

Chart No.	Notices to Mariners Edition Date
4624	(P)29-AUG-2003
4625	(24-JAN-2003 New Edition Advertised)
4626	08-AUG-2003, (24-JAN-2003 New Edition Advertised)
4634	29-AUG-2003
4635	(30-MAY-2003 New Edition Advertised)
4639	22-AUG-2003
4643	(28-MAR-2003 New Edition Advertised)
4652	(10-JAN-2003 New Edition Advertised)
4653	(30-MAY-2003 New Edition Advertised)
4667	(27-JUN-2003 New Edition Advertised)
4682	(27-JUN-2003 New Edition Advertised)
4700	(21-MAR-2003 New Edition Advertised)
4703	(04-APR-2003 New Edition Advertised)
4712	18-JUL-2003
4731	(13-JUN-2003 New Edition Advertised)
4732	(06-JUN-2003 New Edition Advertised)
4744	25-JUL-2003
4763	11-JUL-2003
4767	(18-JUL-2003 New Edition Advertised)
4771	(07-MAR-2003 New Edition Advertised)
4774	(04-JUL-2003 New Edition Advertised)
4775	11-JUL-2003
4824	25-JUL-2003
4845	13-JUN-2003
L/C4846	(T)04-JUL-2003
4847	22-AUG-2003, (T)22-AUG-2003
4849	(T)22-AUG-2003, 20-JUN-2003, 13-JUN-2003
L/C4850	13-JUN-2003
L/C4851	04-JUL-2003
4853	04-JUL-2003, 20-JUN-2003
L/C4854	20-JUN-2003
4905	18-JUL-2003, 06-JUN-2003
4906	08-AUG-2003
4911	06-JUN-2003
4920	08-AUG-2003, 06-JUN-2003
4921	13-JUN-2003
4950	01-AUG-2003, 20-JUN-2003
L/C4951	01-AUG-2003, 20-JUN-2003
L/C4952	01-AUG-2003, 20-JUN-2003
4954	01-AUG-2003
4956	27-JUN-2003, 13-JUN-2003, (P)13-JUN-2003
4980	22-AUG-2003
5047	11-JUL-2003
5133	(27-JUN-2003 New Edition Advertised)
5140	(27-JUN-2003 New Edition Advertised)
5143	(07-MAR-2003 New Edition Advertised)
6021	22-AUG-2003
6023	29-AUG-2003
6035	13-JUN-2003
6242	06-JUN-2003
6259	01-AUG-2003
6263	01-AUG-2003
8005	(20-JUN-2003 New Edition Advertised)
L/C8014	(T)04-JUL-2003, 20-JUN-2003, 13-JUN-2003
8015	(T)04-JUL-2003
8047	(23-MAY-2003 New Edition Advertised)
8048	(03-JUN-2003 New Edition Advertised)
8049	(07-MAR-2003 New Edition Advertised)

**SECTION 1 – Edition 08/2003  
SAFETY AND GENERAL INFORMATION**

**\*805 TRANSPORT CANADA PUBLICATIONS - SHIP SAFETY BULLETINS (TP-3231) - 2003**

Ship Safety Bulletins address safety-related matters pertaining to vessels. Bulletins are available from Transport Canada's Marine Safety Directorate free of charge and are issued on an "as needed" basis.  
**A complete list of Ship Safety Bulletins are available on Transport Canada's Web site.**

If you do not have access to our Web site and wish to be included in the Ship Safety Bulletins mailing list, please send your request to the Marine Safety location provided below.

As of June 30, 2003, the following bulletins have been issued.

Bulletin Number	Title	Date of Creation
01/2003	Memorandum of Understanding Between United States Coast Guard and Transport Canada Marine Safety Respecting Mutual Recognition of Domestic Mariner Qualifications	2003-01-07
02/2003	2003 Interim Small Vessel Compliance Program	2003-01-29
03/2003	Accessibility of Fire Control Plans	2003-05-01

**Transport Publications (TPs) New and/or Amended - 2003**

Publication No.	Title	Date
TP 10936	Bridge Watchman Training Course (amended)	2003
TP 10944	Notice to Shipmasters Loading Coal (amended)	2003
TP 11342	Coastal Life Raft (amended)	2003
TP 13571	Standards for SOLAS Life Jackets (amended)	2003

Copies of these publications may be obtained from:

Marine Safety  
Transport Canada  
Place de Ville, Tower "C"  
330 Sparks Street, 11<sup>th</sup> floor  
Ottawa, Ontario, K1A 0N8

E-mail: [marinesafety@tc.gc.ca](mailto:marinesafety@tc.gc.ca)

**Web site: Ship Safety Bulletins:** [http://www.tc.gc.ca/marinesafety/bulletins/toc\\_e.htm](http://www.tc.gc.ca/marinesafety/bulletins/toc_e.htm)

Transport Publications: <http://www.tc.gc.ca/MarineSafety/TP/menu.htm>

Phone: (613) 991-3135

Fax: (613) 990-6191

**\*801 NOVA SCOTIA, SOUTHEAST COAST - COFFIN ISLAND AND LIVERPOOL BAY - LIGHT BUOYS DISCONTINUED.**

Reference: Notice published in Section I of Edition 03/2002 is cancelled.

**\*803 NOVA SCOTIA - LIVERPOOL HARBOUR - LIGHT BUOYS DISCONTINUED.**

Reference: Notice published in Section I of Edition 05/2002 is cancelled.

**\*804 NEW BRUNSWICK - CAMPOBELLO ISLAND - CHOCOLATE COVE - LIGHT DISCONTINUED.**

Reference: Notice published in Section I of Edition 10/2002 is cancelled.

**\*802 PRINCE EDWARD ISLAND - NORTH RUSTICO AND NEW LONDON - LIGHTED BUOYS REPLACED.**

Reference: Notice published in Section I of Edition 03/2002 is cancelled.

**SECTION 1 – Edition 08/2003  
SAFETY AND GENERAL INFORMATION**

**\*810      MONTRÉAL HARBOUR - MOORING PROHIBITED AT SECTIONS 101 AND 102 IN MONTREAL HARBOUR.**

Major decontamination of the grounds is in progress at sections 101 and 102 in Montréal Harbour. Excavations on the surface of the wharf could affect the stability of the wharf frontage. Access to the installations from land as well as mooring are prohibited. Completion of work is schedule for 2006.

**\*806      ONTARIO - TRENT-SEVERN WATERWAY - OCTONABEE RIVER - LAKEFIELD - PIER UNDER RECONSTRUCTION.**

Reference: Notice 525(T)/92 cancelled.

(B2003-029)

**\*811(P)      GEORGIAN BAY - SMALL CRAFT ROUTE NORTH - NARROW ISLAND - DAY BEACON RANGES TO BE DISCONTINUED.**

The Canadian Coast Guard proposes to permanently discontinue the following aids to navigation:

Thistle Island day beacon range (45°23' 55.5"N 80°18'55"W approx.)  
Franklin Island day beacon range (45°24' 25"N 80°19'25"W approx.)  
Cormican Bay day beacon range (45°24' 28.5"N 80°19'00"W approx.)  
Narrow Island South day beacon range (45°24' 43.5"N 80°19'13"W approx.)  
Narrow Island North day beacon range (45°24' 56"N 80°19'26"W approx.)  
Tennant Point beacon range (45°25' 34.5"N 80°19'53"W approx.)  
Galna Point day beacon range (45°25' 29"N 80°21'23"W approx.)  
Sparks Island beacon range (45°25' 01"N 80°19'46"W approx.)

Additional buoys will be added in place of ranges. Comments on this action are solicited from mariners and other interested parties. Comments should be directed to Supervisor, Marine Aids Program, 28 Waubeek St., Parry Sound, Ontario, P2A 1B9, Telephone (705) 746-2196, Facsimile (705) 746-4820, e-mail [ChilderhoseR@dfo-mpo.gc.ca](mailto:ChilderhoseR@dfo-mpo.gc.ca) within three months of publication of this notice. Any objections raised must state the facts on which they are based and should include supporting information on safety, commerce and public benefit.

(D2003-119)

**\*812(P)      LOWER LAKE GEORGE - DAY BEACON RANGE TO BE DISCONTINUED.**

The Canadian Coast Guard proposes to permanently discontinue the following aids to navigation:

Day beacon range (46°21' 33.5"N 84°07'40"W approx.)

Comments on this action are solicited from mariners and other interested parties. Comments should be directed to Supervisor, Marine Aids Program, 28 Waubeek St., Parry Sound, Ontario, P2A 1B9, Telephone (705) 746-2196, Facsimile (705) 746-4820, e-mail [ChilderhoseR@dfo-mpo.gc.ca](mailto:ChilderhoseR@dfo-mpo.gc.ca) within three months of publication of this notice. Any objections raised must state the facts on which they are based and should include supporting information on safety, commerce and public benefit.

(D2003-120)

**\*807      LAKE ONTARIO - BURLINGTON CANAL ENTRANCE - TEMPORARY LIGHT BUOY.**

Reference: Notice 603(T)/96 cancelled.

**\*809      INLAND WATERS - MANITOBA - LAKE WINNIPEG - MUKUTAWA RIVER APPROACH - SPAR BUOYS DISCONTINUED.**

Reference: Notice published in Section I of Edition 07/2002 is cancelled.

(D2003-061-072, 100)



**SECTION 2 – Edition 08/2003  
CHART CORRECTIONS**

**1223 - Chenal Du Bic et les approches/and approaches - New Edition - 03-OCT-1997 - NAD 1983**

**29-AUG-2003**

		LNM/D. 11-FEB-2000
Add	prohibited anchoring area and legend Mouillage interdit / Anchorage Prohibited	joining 48°25'59.9"N 068°42'00.3"W
		48°27'28.9"N 068°43'07.8"W
		48°27'28.9"N 068°41'58.1"W
		and 48°25'59.9"N 068°42'00.3"W
		<i>DFO(6405542-02)</i>

**L/C1236 - Pointe des Monts aux/to Escoumins - New Edition - 25-SEP-1998 - NAD 1983**

**29-AUG-2003**

		LNM/D. 27-JUN-2003
Add	prohibited anchoring area	joining 48°23'50.0"N 068°40'22.3"W
		48°31'20.9"N 068°46'03.4"W
		48°31'43.2"N 068°45'11.8"W
		48°24'12.3"N 068°39'30.6"W
		48°23'42.0"N 068°39'53.6"W
		and 48°23'50.0"N 068°40'22.3"W
		<i>DFO(6405542-01)</i>

**1313 - Port de Trois-Rivières - New Edition - 28-JUL-2000 - NAD 1983**

**29-AUG-2003**

		LNM/D. 20-JUN-2003
Delete	the spoil ground limit	joining 46°20'41.8"N 072°30'47.8"W
		46°20'36.1"N 072°30'50.3"W
		and 46°20'30.0"N 072°30'43.5"W
		<i>DFO(6405551-01)</i>

Delete	depth of 3 metres 7 decimetres	46°20'35.3"N 072°30'50.6"W
		<i>DFO(6405551-03)</i>

Add	the spoil ground limit	joining 46°20'41.9"N 072°30'47.8"W
		46°20'36.1"N 072°30'52.1"W
		and 46°20'30.0"N 072°30'43.5"W
		<i>DFO(6405551-02)</i>

**1317 - Sault-au-Cochon à/to Québec - New Edition - 17-AUG-2001 - NAD 1983**

**22-AUG-2003**

		LNM/D. 18-JUL-2003
CANCELS	depth of 4 metres 6 decimetres	47°00'56.8"N 070°35'33.3"W
	This information is incorporated in the patch that appeared in the July edition.	
		<i>DFO(6405237-07)</i>

**1433 - Île St. Régis to/à Moses-Saunders Power Dam - New Chart - 28-MAY-1999 - NAD 1983**

**08-AUG-2003**

		LNM/D. 18-OCT-2002
Delete	light Fl R, marked 26	44°59'10.0"N 074°47'37.0"W
		<i>DFO(6600927-01)</i>

Add	red starboard hand pillar light buoy FIR, marked 26	44°59'10.0"N 074°47'37.0"W
		<i>DFO(6600927-02)</i>

**1433 - Moses-Saunders Power Dam to/à Croil Island - New Chart - 28-MAY-1999 - NAD 1983**

**08-AUG-2003**

		LNM/D. 18-OCT-2002
Delete	light Fl R, marked 26	44°59'10.0"N 074°47'37.0"W
		<i>DFO(6600927-01)</i>

Add	red starboard hand pillar light buoy FIR, marked 26	44°59'10.0"N 074°47'37.0"W
		<i>DFO(6600927-02)</i>

**SECTION 2 – Edition 08/2003  
CHART CORRECTIONS**

**1510 - Baie de Vaudreuil à/to Laval - Compartiment A-B - Sheet 2 - New Edition - 14-JUN-2002 - NAD 1983**

**22-AUG-2003** LNMD. 14-FEB-2003  
 Add dangerous wreck, depth unknown 45°29'39.5"N 073°57'52.9"W  
*DFO(6405556-01)*

**1512 - Merrickville Locks / Écluses 21-23 - Sheet 3 - New Edition - 03-MAY-2002 - No geographic reference**

**22-AUG-2003** LNMD. 18-JUL-2003  
 Replace drying height of 3ft with depth of 4ft over crib 019½, 392ft from starboard daybeacon  
 N302  
*DFO(6600966-01)*

**1513 - Narrows Lock to/à Newboro<sup>1</sup> - Sheet 2 - New Edition - 07-JUN-1996 - NAD 1927**

**08-AUG-2003** LNMD. 28-FEB-2003  
 Add submarine cable between 44°42'05.8"N 076°17'36.3"W  
 and 44°42'13.3"N 076°17'35.2"W  
*DFO(6600926-02)*

**1513 - Rocky Narrows to/à Narrows Lock - Sheet 2 - New Edition - 07-JUN-1996 - NAD 1927**

**08-AUG-2003** LNMD. 28-FEB-2003  
 Delete legend Mooring Area / Zone d'amarrage 44°42'18.6"N 076°17'32.1"W  
*DFO(6600926-01)*

Add submarine cable joining 44°42'05.8"N 076°17'36.3"W  
 44°42'16.2"N 076°17'34.9"W  
 44°42'19.2"N 076°17'35.7"W  
 44°42'22.0"N 076°17'37.3"W  
 and 44°42'23.2"N 076°17'40.0"W  
*DFO(6600926-02)*

**1513 - Narrows Lock, Lock / Écluse 35 - Sheet 2 - New Edition - 07-JUN-1996 - No geographic reference**

**08-AUG-2003** LNMD. 28-FEB-2003  
 Add submarine cable between a point 130°, 500 feet from  
 starboard daybeacon N636  
 and a point 070°, 440 feet from starboard  
 daybeacon N636  
*DFO(6600926-03)*

**2026 - Lake Scugog - Sheet 2 - New Edition - 05-APR-1985 - NAD 1927**

**29-AUG-2003** LNMD. 21-FEB-2003  
 Add submarine cable joining 44°09'38.0"N 078°49'59.0"W  
 44°11'29.5"N 078°50'45.5"W  
 44°12'09.5"N 078°51'13.8"W  
 44°12'51.0"N 078°51'30.0"W  
 44°13'09.0"N 078°52'02.0"W  
 and 44°13'21.0"N 078°51'58.0"W  
*DFO(6600950-01)*

**2067 - Hamilton Harbour - New Edition - 15-JUN-2001 - NAD 1983**

**01-AUG-2003** LNMD. 11-JUL-2003  
 Add light, Fl G 43°17'01.0"N 079°47'38.6"W  
*(B2003028) LL(537.73) DFO(6600911-01)*

**22-AUG-2003** LNMD. 01-AUG-2003  
 Add obstruction with known depth of 7.6m 43°16'41.2"N 079°51'39.2"W  
*DFO(6600935-01)*

**SECTION 2 – Edition 08/2003  
CHART CORRECTIONS**

**2067 - Hamilton Yacht Clubs/Clubs Nautiques de Hamilton - New Edition - 15-JUN-2001 - No geographic reference**

**22-AUG-2003**

LNMD. 01-AUG-2003

Add obstruction with known depth of 7.6m 075°, 52m from northwest Centennial Dock light

*DFO(6600935-02)*

**L/C2120 - Niagara River to/à Long Point - New Edition - 06-NOV-1998 - NAD 1983**

**01-AUG-2003**

LNMD. 18-JUL-2003

Delete gas pipeline joining 42°44'10.0"N 079°45'27.0"W  
42°42'14.3"N 079°43'14.2"W  
and 42°41'48.5"N 079°41'39.7"W  
*DFO(6600905-01)*

Delete gas pipeline between 42°41'14.7"N 079°43'16.0"W  
and 42°42'14.3"N 079°43'14.2"W  
*DFO(6600905-02)*

Delete gas pipeline between 42°42'06.0"N 079°44'12.0"W  
and 42°42'14.3"N 079°43'14.2"W  
*DFO(6600905-03)*

Delete gas pipeline joining 42°42'56.0"N 079°35'17.0"W  
42°47'17.0"N 079°29'16.0"W  
42°47'45.0"N 079°29'14.0"W  
and 42°48'45.0"N 079°29'14.0"W  
*DFO(6600910-01)*

Delete gas pipeline between 42°46'45.5"N 079°29'13.3"W  
and 42°47'17.0"N 079°29'16.0"W  
*DFO(6600910-02)*

Delete gas pipeline joining 42°47'46.0"N 079°27'18.9"W  
42°47'45.5"N 079°28'13.1"W  
and 42°45'45.0"N 079°29'14.0"W  
*DFO(6600910-03)*

Delete gas pipeline between 42°48'07.0"N 079°28'46.0"W  
and 42°47'49.0"N 079°29'12.0"W  
*DFO(6600910-04)*

Delete wellhead 42°47'49.0"N 079°29'12.0"W  
*DFO(6600910-09)*

Add gas pipeline joining 42°44'10.0"N 079°45'27.0"W  
42°42'09.2"N 079°43'21.7"W  
and 42°41'48.5"N 079°41'39.7"W  
*DFO(6600905-04)*

Add gas pipeline between 42°42'14.3"N 079°43'14.2"W  
and 42°42'09.2"N 079°43'21.7"W  
*DFO(6600905-05)*

Add gas pipeline between 42°41'14.7"N 079°43'16.0"W  
and 42°42'09.2"N 079°43'21.7"W  
*DFO(6600905-06)*

Add gas pipeline between 42°42'06.0"N 079°44'12.0"W  
and 42°42'09.2"N 079°43'21.7"W  
*DFO(6600905-07)*

**SECTION 2 – Edition 08/2003  
CHART CORRECTIONS**

Add	gas pipeline	between 42°42'54.0"N 079°43'55.0"W and 42°42'52.8"N 079°44'07.8"W <i>DFO(6600905-08)</i>
Add	gas pipeline	joining 42°42'56.0"N 079°35'17.0"W 42°43'38.4"N 079°34'19.9"W 42°47'29.0"N 079°29'12.2"W 42°47'48.6"N 079°29'04.0"W and 42°48'45.0"N 079°29'14.0"W <i>DFO(6600910-05)</i>
Add	gas pipeline	joining 42°46'45.5"N 079°29'13.3"W 42°47'29.0"N 079°29'12.2"W 42°47'45.7"N 079°29'14.1"W 42°47'48.6"N 079°29'04.0"W and 42°48'07.0"N 079°28'46.0"W <i>DFO(6600910-06)</i>
Add	gas pipeline	joining 42°47'46.0"N 079°27'18.9"W 42°47'48.2"N 079°28'07.2"W and 42°47'48.6"N 079°29'04.0"W <i>DFO(6600910-07)</i>

**L/C2122 - Pointe aux Pins to/à Point Pelee - New Edition - 05-JUL-1991 - NAD 1927  
08-AUG-2003**

LNM/D. 27-JUN-2003

Delete	wellhead	42°05'00.0"N 082°19'02.6"W <i>DFO(6600879-01)</i>
Delete	gas pipeline	joining 42°05'00.0"N 082°19'02.6"W 42°03'45.0"N 082°20'57.0"W 42°00'42.0"N 082°24'38.0"W and 41°59'29.5"N 082°26'05.7"W <i>DFO(6600879-02)</i>
Delete	gas pipeline	between 42°01'38.0"N 082°25'54.0"W and 42°00'42.0"N 082°24'38.0"W <i>DFO(6600879-04)</i>
Delete	gas pipeline	joining 41°59'29.5"N 082°26'05.7"W 41°57'59.0"N 082°27'16.0"W and 41°56'39.0"N 082°27'50.1"W <i>DFO(6600879-06)</i>
Add	gas pipeline	joining 42°05'00.0"N 082°19'02.6"W 42°03'36.3"N 082°20'56.8"W 42°02'00.7"N 082°22'51.6"W 42°00'36.2"N 082°24'35.1"W 42°00'19.9"N 082°24'58.0"W and 41°59'29.5"N 082°26'05.7"W <i>DFO(6600879-03)</i>
Add	gas pipeline	joining 42°01'38.0"N 082°25'52.0"W 42°01'04.0"N 082°25'12.4"W and 42°00'36.2"N 082°24'35.1"W <i>DFO(6600879-05)</i>
Add	abandoned pipeline	joining 41°59'29.5"N 082°26'05.7"W 41°57'58.6"N 082°27'11.3"W and 41°56'39.3"N 082°27'50.1"W <i>DFO(6600879-08)</i>

**SECTION 2 – Edition 08/2003  
CHART CORRECTIONS**

**22-AUG-2003**

LNM/D. 08-AUG-2003

Delete	gas pipeline	joining 42°06'39.3"N 082°15'58.7"W 42°05'30.0"N 082°17'23.0"W and 42°05'00.0"N 082°19'02.6"W <i>DFO(6600930-01)</i>
Delete	gas pipeline	between 42°08'24.7"N 082°18'13.4"W and 42°05'00.0"N 082°19'02.6"W <i>DFO(6600930-03)</i>
Delete	gas pipeline	between 42°08'24.7"N 082°18'13.4"W and 42°08'01.0"N 082°18'13.0"W <i>DFO(6600930-04)</i>
Delete	gas pipeline	joining 42°10'30.0"N 082°15'15.0"W 42°09'52.0"N 082°13'43.0"W 42°09'40.0"N 082°13'15.2"W and 42°09'55.6"N 082°12'46.5"W <i>DFO(6600932-01)</i>
Delete	gas pipeline	between 42°09'52.0"N 082°13'43.0"W and 42°09'18.1"N 082°13'28.2"W <i>DFO(6600932-02)</i>
Delete	gas pipeline	between 42°09'52.0"N 082°13'43.0"W and 42°09'06.4"N 082°13'25.5"W <i>DFO(6600932-03)</i>
Delete	gas pipeline	between 42°08'53.6"N 082°13'23.5"W and 42°08'51.0"N 082°13'11.0"W <i>DFO(6600932-04)</i>
Delete	gas pipeline	between 42°08'55.6"N 082°12'53.5"W and 42°08'56.0"N 082°13'18.0"W <i>DFO(6600932-05)</i>
Delete	gas pipeline	joining 42°09'05.4"N 082°12'40.0"W 42°08'54.0"N 082°13'02.0"W and 42°09'08.1"N 082°12'53.4"W <i>DFO(6600932-06)</i>
Delete	gas pipeline	between 42°08'33.0"N 082°12'51.0"W and 42°08'53.0"N 082°13'06.0"W <i>DFO(6600932-07)</i>
Delete	gas pipeline	between 42°10'30.0"N 082°15'15.0"W and 42°09'30.0"N 082°14'00.0"W <i>DFO(6600932-08)</i>
Delete	gas pipeline	joining 42°08'53.5"N 082°13'24.5"W 42°08'35.1"N 082°13'05.8"W 42°08'33.0"N 082°12'51.0"W 42°08'19.8"N 082°13'34.8"W and 42°07'46.5"N 082°12'08.5"W <i>DFO(6600932-09)</i>

**SECTION 2 – Edition 08/2003  
CHART CORRECTIONS**

Delete	gas pipeline	joining 42°14'25.0"N 082°06'40.0"W 42°13'49.0"N 082°06'11.0"W 42°13'29.0"N 082°05'53.0"W 42°13'26.0"N 082°05'20.0"W and 42°13'26.0"N 082°04'37.5"W <i>DFO(6600937-01)</i>
Delete	gas pipeline	between 42°12'57.0"N 082°05'22.1"W and 42°13'26.0"N 082°05'20.0"W <i>DFO(6600937-02)</i>
Delete	gas pipeline	between 42°12'50.8"N 082°04'44.6"W and 42°10'46.1"N 082°03'55.2"W <i>DFO(6600937-03)</i>
Delete	gas pipeline	joining 42°13'49.0"N 082°06'11.0"W 42°14'00.0"N 082°06'00.0"W and 42°14'20.0"N 082°05'34.0"W <i>DFO(6600937-04)</i>
Delete	gas pipeline	joining 42°13'49.0"N 082°06'11.0"W 42°13'49.0"N 082°05'33.0"W and 42°13'49.0"N 082°04'50.0"W <i>DFO(6600937-05)</i>
Delete	gas pipeline	joining 42°10'30.0"N 082°15'15.0"W 42°09'42.0"N 082°14'03.0"W 42°09'57.0"N 082°11'06.0"W 42°11'10.0"N 082°04'48.0"W 42°14'34.0"N 081°50'27.0"W 42°16'37.0"N 081°49'18.0"W 42°18'51.0"N 081°49'07.0"W 42°20'59.0"N 081°49'24.0"W and 42°21'30.0"N 081°49'54.0"W <i>DFO(6600948-01)</i>
Reposition	wellhead	from 42°14'20.0"N 082°05'34.0"W to 42°14'18.9"N 082°05'39.4"W <i>DFO(6600937-06)</i>
Reposition	wellhead	from 42°14'00.0"N 082°06'00.0"W to 42°13'59.9"N 082°06'06.5"W <i>DFO(6600937-07)</i>
Reposition	wellhead	from 42°13'49.0"N 082°04'50.0"W to 42°13'48.1"N 082°04'55.6"W <i>DFO(6600937-08)</i>
Reposition	wellhead	from 42°13'26.0"N 082°05'20.0"W to 42°13'27.4"N 082°05'17.6"W <i>DFO(6600937-09)</i>
Reposition	wellhead	from 42°13'26.0"N 082°04'37.5"W to 42°13'24.1"N 082°04'43.3"W <i>DFO(6600937-10)</i>
Add	gas pipeline	joining 42°06'39.3"N 082°15'58.7"W 42°05'45.2"N 082°17'42.2"W and 42°05'00.0"N 082°19'02.6"W <i>DFO(6600930-02)</i>

**SECTION 2 – Edition 08/2003  
CHART CORRECTIONS**

Add	abandoned pipeline	joining 42°09'55.6"N 082°12'46.5"W 42°09'40.0"N 082°13'15.2"W and 42°09'18.1"N 082°13'28.2"W <i>DFO(6600932-10)</i>
Add	gas pipeline	joining 42°09'18.1"N 082°13'28.2"W 42°09'06.4"N 082°13'25.5"W 42°09'01.0"N 082°13'09.6"W 42°08'55.6"N 082°12'53.5"W and 42°09'05.4"N 082°12'40.0"W <i>DFO(6600932-11)</i>
Add	gas pipeline	between 42°10'33.0"N 082°15'07.0"W and 42°09'30.0"N 082°14'00.0"W <i>DFO(6600932-12)</i>
Add	gas pipeline	between 42°09'08.1"N 082°12'53.4"W and 42°09'01.0"N 082°13'09.6"W <i>DFO(6600932-13)</i>
Add	gas pipeline	between 42°08'53.6"N 082°13'23.5"W and 42°07'49.9"N 082°12'07.2"W <i>DFO(6600932-14)</i>
Add	gas pipeline	between 42°08'53.0"N 082°13'06.0"W and 42°08'43.1"N 082°12'51.1"W <i>DFO(6600932-15)</i>
Add	gas pipeline	joining 42°14'33.3"N 082°06'20.3"W 42°13'47.5"N 082°06'05.3"W 42°13'29.0"N 082°05'54.1"W 42°13'27.4"N 082°05'17.6"W and 42°13'24.0"N 082°04'43.3"W <i>DFO(6600937-11)</i>
Add	gas pipeline	joining 42°14'18.9"N 082°05'39.4"W 42°13'59.9"N 082°06'06.5"W and 42°13'47.5"N 082°06'05.3"W <i>DFO(6600937-12)</i>
Add	gas pipeline	joining 42°13'48.1"N 082°04'55.6"W 42°13'50.0"N 082°05'34.0"W and 42°13'47.5"N 082°06'05.3"W <i>DFO(6600937-13)</i>
Add	gas pipeline	between 42°12'57.0"N 082°05'22.1"W and 42°12'27.4"N 082°05'17.6"W <i>DFO(6600937-14)</i>
Add	gas pipeline	joining 42°10'33.0"N 082°15'07.0"W 42°09'44.9"N 082°13'56.6"W 42°09'28.0"N 082°13'28.2"W 42°09'25.1"N 082°13'02.8"W 42°09'59.4"N 082°11'00.9"W 42°10'30.3"N 082°08'01.9"W 42°11'09.1"N 082°05'03.3"W 42°11'48.2"N 082°02'10.6"W 42°12'23.5"N 081°59'14.2"W 42°13'01.7"N 081°56'15.3"W 42°14'30.9"N 081°50'29.4"W

**SECTION 2 – Edition 08/2003  
CHART CORRECTIONS**

42°16'32.2"N 081°49'14.9"W  
 42°16'33.1"N 081°49'17.8"W  
 42°17'41.3"N 081°49'11.0"W  
 42°18'26.4"N 081°49'06.3"W  
 42°18'47.9"N 081°49'02.4"W  
 and 42°21'01.4"N 081°49'22.0"W  
*DFO(6600948-02)*

**L/C2123 - Pelee Passage to/à la Detroit River - New Edition - 12-MAR-1993 - NAD 1927**

**08-AUG-2003**

LNMD. 27-JUN-2003

Delete gas pipeline joining 42°03'06.0"N 082°21'38.0"W  
 42°00'44.0"N 082°24'30.0"W  
 and 41°59'30.0"N 082°26'07.0"W  
*DFO(6600879-02)*

Delete gas pipeline between 42°01'38.0"N 082°25'52.0"W  
 and 42°00'36.0"N 082°24'38.0"W  
*DFO(6600879-04)*

Delete gas pipeline joining 41°59'30.0"N 082°26'07.0"W  
 41°58'05.0"N 082°27'12.0"W  
 and 41°56'39.0"N 082°27'50.0"W  
*DFO(6600879-06)*

Delete gas pipeline between 42°01'04.0"N 082°25'16.0"W  
 and 42°00'43.0"N 082°24'30.0"W  
*DFO(6600879-07)*

Add gas pipeline joining 42°03'06.0"N 082°21'26.0"W  
 42°02'00.7"N 082°22'51.6"W  
 42°00'36.2"N 082°24'35.0"W  
 42°00'19.9"N 082°24'58.0"W  
 and 41°59'30.0"N 082°26'07.0"W  
*DFO(6600879-03)*

Add gas pipeline joining 42°01'38.0"N 082°25'52.0"W  
 42°01'04.0"N 082°25'12.4"W  
 and 42°00'36.2"N 082°24'35.0"W  
*DFO(6600879-05)*

Add abandoned pipeline joining 41°59'30.0"N 082°26'07.0"W  
 41°57'58.6"N 082°27'11.2"W  
 and 41°56'39.3"N 082°27'50.1"W  
*DFO(6600879-08)*

**2181 - Scudder - New Edition - 10-NOV-1989 - NAD 1983**

**29-AUG-2003**

LNMD. 27-JUN-2003

Add pile 186½, 180ft from Scudder outer wharf light  
*DFO(6600975-01)*

Add pile 184½, 105ft from Scudder outer wharf light  
*DFO(6600975-02)*

Add pile 179½, 57ft from Scudder outer wharf light  
*DFO(6600975-03)*

Add pile 168½, 35ft from Scudder outer wharf light  
*DFO(6600975-04)*



**SECTION 2 – Edition 08/2003  
CHART CORRECTIONS**

Add	pile	220°, 23ft from Scudder outer wharf light	
			<i>DFO(6600975-05)</i>
Add	pile	318°, 43ft from Scudder outer wharf light	
			<i>DFO(6600975-06)</i>
Add	pile	281°, 38ft from Scudder outer wharf light	
			<i>DFO(6600975-07)</i>
Add	pile	250°, 45ft from Scudder outer wharf light	
			<i>DFO(6600975-08)</i>
Add	pile	233°, 60ft from Scudder outer wharf light	
			<i>DFO(6600975-09)</i>
Add	pile	219½°, 78ft from Scudder outer wharf light	
			<i>DFO(6600975-10)</i>
Add	pile	210°, 120ft from Scudder outer wharf light	
			<i>DFO(6600975-11)</i>
Add	pile	207°, 148ft from Scudder outer wharf light	
			<i>DFO(6600975-12)</i>

**L/C2300 - Lake Superior/Lac Supérieur - New Chart - 24-APR-1998 - NAD 1983**

<b>01-AUG-2003</b>			LNM/D. 04-APR-2003
Delete	yellow ODAS/SADO light buoy, FI (4) Y, marked 45004	47°33'50.0"N 086°32'58.0"W	<i>DFO(6600912-01)</i>
Add	yellow ODAS/SADO light buoy, FI (4) Y, marked 45004	47°03'19.0"N 086°32'59.0"W	<i>DFO(6600912-02)</i>

**2305 - Plans of Harbours - New Edition - 17-DEC-1956 - Astronomic Positioning**

<b>08-AUG-2003</b>			LNM/D. (922-1998)
Amend	HORIZONTAL DATUM: Astronomic Datum. Positions on NAD 83 or WGS 84 must be moved 3.04 seconds northward and 0.86 seconds eastward to agree with this chart.	48°47'36.0"N 086°57'06.0"W	<i>DFO(6600928-01)</i>

**4001 - Gulf of Maine to Strait of Belle Isle au Déroit de Belle Isle - New Edition - 01-DEC-1995 - NAD 1983**

<b>08-AUG-2003</b>			LNM/D. 25-JUL-2003
Add	yellow ODAS/SADO light buoy, marked PRIV	43°37'31.2"N 066°37'16.2"W	<i>DFO(6300964-01)</i>

**L/C4002 - Golfe du Saint-Laurent / Gulf of St. Lawrence - New Edition - 27-DEC-1991 - NAD 1927**

<b>08-AUG-2003</b>			LNM/D. 04-APR-2003
Add	yellow ODAS/SADO light buoy, FI Y 5s, marked 44150	46°50'59.8"N 064°38'50.6"W	<i>DFO(6300963-01)</i>

**SECTION 2 – Edition 08/2003  
CHART CORRECTIONS**

**4003 - Cape Breton to/à Cape Cod - New Edition - 21-MAR-2003 - NAD 1983**

**08-AUG-2003**

Add	yellow ODAS/SADO light buoy, Fl (5) Y, marked PRIV	LNMD. 04-JUL-2003 43°37'31.2"N 066°37'16.2"W <i>DFO(6300964-01)</i>
-----	--	---

**L/C4006 - Newfoundland/Terre Neuve to/à Cape Bermuda - - New Edition - 14-DEC-1984 - NAD 1927**

**08-AUG-2003**

Add	yellow ODAS/SADO light buoy, marked PRIV	LNMD. 04-JUL-2003 43°37'31.2"N 066°37'16.2"W <i>DFO(6300964-01)</i>
-----	--	---

**4011 - Approaches to/Approches à Bay of Fundy/Baie de Fundy - Sheet 1 - New Edition - 03-JAN-2003 - NAD 1983**

**08-AUG-2003**

Add	yellow ODAS/SADO light buoy, Fl (5) Y, marked PRIV	LNMD. 04-JUL-2003 43°37'31.2"N 066°37'16.2"W <i>DFO(6300964-01)</i>
-----	--	---

**4012 - Yarmouth to/à Halifax - Sheet 1 - New Edition - 14-FEB-2003 - NAD 1983**

**08-AUG-2003**

Add	yellow ODAS/SADO light buoy, Fl (5) Y, marked PRIV	43°37'31.2"N 066°37'16.2"W <i>DFO(6300964-01)</i>
-----	--	--

**4013 - Halifax to/à Sydney - New Edition - 06-SEP-2002 - NAD 1983**

**08-AUG-2003**

Delete	fog signal	45°37'50.0"N 060°34'00.0"W <i>(G2003007) LL(740) DFO(6300980-01)</i>
--------	------------	---

**4023 - Northumberland Strait / Déroit de Northumberland - New Edition - 27-DEC-2002 - NAD 1983**

**08-AUG-2003**

Add	yellow ODAS/SADO light buoy, Fl Y 5s, marked 44150	LNMD. 04-APR-2003 46°51'00.0"N 064°38'48.0"W <i>DFO(6300963-01)</i>
-----	--	---

**4047 - St. Pierre Bank/Banc de Saint-Pierre to/au Whale Bank/Banc de la Baleine - New Edition - 09-OCT-1998 - NAD 1983**

**29-AUG-2003**

CANCELS	Notice 108(T)/94 is cancelled - subsurface mooring removed.	LNMD. 14-MAR-2003 46°21'12.0"N 054°52'12.0"W <i>DFO(6011081-01)</i>
---------	---	---

**4140 - Avon River and Approaches/et les approches - New Edition - 15-NOV-2002 - NAD 1983**

**29-AUG-2003**

Delete	depth of 20 feet	45°12'44.0"N 064°15'14.0"W <i>DFO(6300969-01)</i>
Delete	depth of 8 feet	45°08'24.0"N 064°13'56.0"W <i>DFO(6300969-04)</i>
Add	awash 0 feet	45°12'46.0"N 064°15'12.7"W <i>DFO(6300969-02)</i>
Add	depth of 10 feet	45°08'23.2"N 064°13'58.7"W <i>DFO(6300969-05)</i>
Add	depth of 2 feet	45°08'21.0"N 064°13'54.3"W <i>DFO(6300969-06)</i>
Add	depth of 1 foot	45°08'25.2"N 064°13'55.5"W <i>DFO(6300969-07)</i>

**SECTION 2 – Edition 08/2003  
CHART CORRECTIONS**

**4202 - Halifax Harbour Point Pleasant to/à Bedford Basin - New Edition - 31-DEC-1999 - NAD 1983**

**29-AUG-2003**

		LNM/D. 23-MAY-2003
Delete	sector light line	between 44°36'54.6"N 063°30'47.8"W and 44°36'42.3"N 063°30'32.0"W <i>DFO(6300979-01)</i>
Delete	sector light line	between 44°37'01.0"N 063°30'41.1"W and 44°36'42.3"N 063°30'20.3"W <i>DFO(6300979-02)</i>
Delete	sector light line	between 44°37'01.8"N 063°30'40.1"W and 44°36'42.3"N 063°30'19.1"W <i>DFO(6300979-03)</i>
Delete	sector light line	between 44°36'58.3"N 063°30'16.3"W and 44°36'42.3"N 063°30'06.3"W <i>DFO(6300979-04)</i>
Delete	sector light arc	between 44°36'46.6"N 063°30'32.5"W and 44°36'57.4"N 063°30'15.7"W <i>DFO(6300979-05)</i>
Delete	sector light legendl 'G'	44°36'49.3"N 063°30'30.5"W <i>DFO(6300979-06)</i>
Delete	sector light legend 'W'	44°36'51.8"N 063°30'27.5"W <i>DFO(6300979-07)</i>
Delete	sector light legend 'R'	44°36'54.0"N 063°30'23.9"W <i>DFO(6300979-08)</i>

**L/C4230 - Little Hope Island to/à Cape St. Marys - New Chart - 15-JUN-1990 - NAD 1983**

**08-AUG-2003**

		LNM/D. 23-AUG-2002
Add	yellow ODAS/SADO light buoy, Fl (5) Y, marked PRIV	43°37'31.2"N 066°37'16.2"W <i>DFO(6300964-01)</i>

**4624 - Long Island to/à St. Lawrence Harbours - New Edition - 07-JAN-2000 - NAD 1983**

**29-AUG-2003**

		LNM/D. 11-APR-2003
CANCELS	27 metres 4 decimetres (15 fathoms) Repld 1990 Notice 356(P)/90 is cancelled - shoal has been incorporated on to the new edition of chart 4624.	47°10'15.0"N 054°47'48.0"W <i>DFO(6007246-01)</i>

**4626 - Saint-Pierre and/et Miquelon (France) - New Edition - 24-JAN-2003 - NAD 1983**

**08-AUG-2003**

Add	marine farm	joining 47°07'04.1"N 056°18'46.9"W 47°06'02.9"N 056°17'11.5"W and 47°05'37.1"N 056°18'04.9"W <i>DFO(6300986-01)</i>
-----	-------------	--

**4634 - La Poile Bay to Ramea Islands - New Edition - 14-JUL-1995 - Unknown**

**29-AUG-2003**

		LNM/D. 18-APR-2003
Amend	"Chart 4637" to read "Chart 4825"	47°29'06.0"N 057°22'06.0"W <i>DFO(6300989-01)</i>
Amend	"Chart 4637" to read "Chart 4825"	47°32'15.0"N 057°40'00.0"W <i>DFO(6300989-02)</i>

**SECTION 2 – Edition 08/2003  
CHART CORRECTIONS**

**4639 - Garia Bay and / et Le Moine Bay - New Edition - 10-MAY-2002 - NAD 1983**

**22-AUG-2003**

Delete	light FIR 10s 15m 13M	47°36'05.9"N 058°42'02.0"W (N2002088) LL(151) DFO(6300499-01)
Delete	Lt Ho/Phare Aband	47°36'06.3"N 058°41'40.6"W (N2002089) LL(151.07) DFO(6300500-01)
Delete	Fog Sig 60s	47°36'05.9"N 058°42'02.0"W (N2002090) LL(151.09) DFO(6300501-01)
Delete	red and white fairway pillar light buoy Mo(A), WHIS, marked QR	47°35'28.4"N 058°41'41.7"W (N2002135) LL(149) DFO(6300573-01)
Add	light FIR 6s 29m 3M	47°36'06.3"N 058°41'40.6"W (N2002089) LL(151.07) DFO(6300500-02)
Add	Fog Sig 60s	47°36'06.3"N 058°41'40.6"W (N2002092) LL(151.08) DFO(6300503-01)

**4639 - Rose Blanche - New Edition - 10-MAY-2002 - NAD 1983**

**22-AUG-2003**

Delete	light FIR 10s 15m 13M	47°36'05.9"N 058°42'02.0"W (N2002088) LL(151) DFO(6300499-01)
Delete	Lt Ho/Phare Aband	47°36'06.3"N 058°41'40.6"W (N2002089) LL(151.07) DFO(6300500-01)
Delete	Fog Sig 60s	47°36'05.9"N 058°42'02.0"W (N2002090) LL(151.09) DFO(6300501-01)
Delete	red and white fairway pillar light buoy Mo(A), WHIS, marked QR	47°35'28.4"N 058°41'41.7"W (N2002135) LL(149) DFO(6300573-01)
Add	light FIR 6s 29m 3M	47°36'06.3"N 058°41'40.6"W (N2002089) LL(151.07) DFO(6300500-02)
Add	Fog Sig 60s	47°36'06.3"N 058°41'40.6"W (N2002092) LL(151.08) DFO(6300503-01)

**4847 - Conception Bay - New Edition - 03-AUG-2001 - NAD 1983**

**22-AUG-2003**

CANCELS	light Temporary light discontinued. Original light reconstructed. See reference DFO 6300994 appearing in this edition. With this notification, Notice dated 30-MAR-2001(T), DFO 6829425-01 is cancelled.	LNMD. 23-MAY-2003 47°41'24.6"N 053°12'52.9"W  (N2001-009(T)) LL(481.000) DFO(6829425-01)
Amend	FR to F RWG against light	47°41'24.0"N 053°12'52.0"W (N2002003) LL(481.1) DFO(6300994-01)
CANCELS	light FI R Temporary light discontinued. With this notification, Notice dated 30-MAR-2001(T), DFO 6829425-02 is cancelled.	47°41'24.4"N 053°12'52.9"W  (N2001-009(T)) DFO(6829425-02)

**SECTION 2 – Edition 08/2003  
CHART CORRECTIONS**

**4849 - Harbour Grace and/et Carbonear - New Chart - 30-DEC-1988 - NAD 1983**

**22-AUG-2003**

CANCELS light  
Temporary light discontinued. Original light reconstructed. See reference DFO 6500109 appearing in Edition 6, 13-JUN-2003. With this notification, Notice dated 30-MAR-2001(T), DFO 6829425-01 is cancelled.

LNMD. 20-JUN-2003  
47°41'24.6"N 053°12'52.8"W

*(N2001-009(T)) LL(481.000) DFO(6829425-01)*

CANCELS light, FI R  
Temporary light discontinued. With this notification, Notice dated 30-MAR-2001(T), DFO 6829425-02 is cancelled.

47°41'24.4"N 053°12'52.8"W

*(N2001-009(T)) DFO(6829425-02)*

**4849 - Fish Plant / Conserverie de Poisson - New Chart - 30-DEC-1988 - NAD 1983**

**22-AUG-2003**

CANCELS light  
Temporary light discontinued. Original light reconstructed. See reference DFO 6500109 appearing in Edition 6, 13-JUN-2003. With this notification, Notice dated 30-MAR-2001(T), DFO 6829425-01 is cancelled.

LNMD. 20-JUN-2003  
47°41'24.6"N 053°12'52.8"W

*(N2001-009(T)) LL(481.000) DFO(6829425-01)*

CANCELS light, FI R  
Temporary light discontinued. With this notification, Notice dated 30-MAR-2001(T), DFO 6829425-02 is cancelled.

47°41'24.4"N 053°12'52.8"W

*(N2001-009(T)) DFO(6829425-02)*

**4906 - West Point à/to Baie de Tracadie - New Chart - 18-MAR-1988 - NAD 1983**

**08-AUG-2003**

Add yellow ODAS/SADO light buoy, FI Y 5s, marked 44150

LNMD. 07-MAR-2003  
46°51'00.0"N 064°38'48.0"W  
*DFO(6300963-01)*

**4920 - Shippegan Harbour - New Edition - 18-SEP-1998 - NAD 1983**

**08-AUG-2003**

Add depth of 1 metre 3 decimetres

LNMD. 06-JUN-2003  
47°43'12.7"N 064°40'02.1"W  
*DFO(6300968-01)*

**4950 - Îles de la Madeleine - New Chart - 23-AUG-2002 - NAD 1983**

**01-AUG-2003**

Delete beacon marked Bn

LNMD. 20-JUN-2003  
47°32'33.2"N 061°32'39.1"W  
*DFO(6405529-01)*

**L/C4951 - Îles de la Madeleine - Partie sud/South Portion - New Chart - 04-JAN-1991 - NAD 1983**

**01-AUG-2003**

Delete beacon marked Bn

LNMD. 20-JUN-2003  
47°32'32.8"N 061°32'39.9"W  
*DFO(6405529-01)*

**L/C4952 - Îles de la Madeleine - Partie nord/Northern Portion - New Chart - 21-AUG-1992 - NAD 1983**

**01-AUG-2003**

Delete beacon marked Bn

LNMD. 20-JUN-2003  
47°32'32.2"N 061°32'39.1"W  
*DFO(6405529-01)*

**4954 - Chenal du Havre de la Grande Entrée - New Edition - 21-FEB-2003 - NAD 1983**

**01-AUG-2003**

Delete beacon marked Bn

47°32'32.4"N 061°32'39.6"W  
*DFO(6405529-01)*

**SECTION 2 – Edition 08/2003  
CHART CORRECTIONS**

**4980 - Blanc-Sablon - New Chart - 03-JAN-1992 - NAD 1983**

**22-AUG-2003**

Add	outfall	LNM/D. 09-MAY-2003 between 51°25'19.5"N 057°07'23.6"W and 51°25'17.1"N 057°07'27.3"W <i>DFO(6405559-01)</i>
Add	depth of 2 metres 4 decimetres over an artificial feature	51°25'17.1"N 057°07'27.3"W <i>DFO(6405559-02)</i>

**6021 - Lake Muskoka - Sheet 2 - New Edition - 24-SEP-1999 - NAD 1983**

**22-AUG-2003**

Add	submarine cable	LNM/D. 03-MAY-2002 joining 45°04'20.0"N 079°32'12.0"W 45°04'12.0"N 079°32'06.5"W 45°04'07.3"N 079°32'11.8"W and 45°04'08.0"N 079°32'14.3"W <i>DFO(6600949-01)</i>
Add	submarine cable	joining 45°04'08.0"N 079°32'14.3"W 45°03'47.5"N 079°32'44.3"W and 45°03'48.7"N 079°32'51.0"W <i>DFO(6600949-02)</i>

**6023 - Lake of Bays - New Edition - 26-FEB-1988 - NAD 1927**

**29-AUG-2003**

Add	submarine power cable	LNM/D. 09-MAR-2001 joining 45°15'20.0"N 078°58'05.1"W 45°15'27.0"N 078°58'03.9"W 45°15'38.0"N 078°57'42.0"W and 45°15'41.5"N 078°57'41.5"W <i>DFO(6600971-01)</i>
-----	-----------------------	--

**6259 - Kettle Island to/à Martin Point - New Chart - 23-FEB-1990 - NAD 1983**

**01-AUG-2003**

Delete	front range beacon	LNMD. 30-JUN-2000 53°53'33.4"N 097°59'49.0"W <i>(D2003052) DFO(6600914-01)</i>
Delete	rear range beacon, leading line and legends 349° and 169°	349°, 400 metres from front range beacon <i>(D2003054) DFO(6600915-02)</i>
Delete	rear range beacon, leading line and legends 055° and 235°	055°, 1080 metres from front range beacon <i>(D2003056) DFO(6600916-02)</i>
Delete	front range beacon	53°53'42.0"N 097°58'22.0"W <i>(D2003057) DFO(6600917-01)</i>
Delete	port daybeacon	53°52'17.0"N 097°59'21.0"W <i>(D2003058) DFO(6600918-01)</i>
Delete	front range beacon	53°51'48.5"N 097°59'27.5"W <i>(D2003059) DFO(6600919-01)</i>
Delete	rear range beacon, leading line and legend 187° - 007°	187°, 70 metres from front range beacon <i>(D2003060) DFO(6600923-02)</i>
Add	rock which covers and uncovers with drying height of 0 metres, 3 decimetres	53°52'17.0"N 097°59'21.0"W <i>DFO(6600918-02)</i>

SECTION 2 – Edition 08/2003  
CHART CORRECTIONS

6263 - Playgreen Lake to/au Little Playgreen Lake - New Chart - 14-APR-1989 - NAD 1983

01-AUG-2003

Delete	front range beacon	LNMD. (339-1992) 53°53'33.5"N 097°59'49.5"W (D2003052) DFO(6600914-01)
Delete	rear range beacon	349°, 400 metres from front range beacon  (D2003054) DFO(6600915-02)
Delete	rear range beacon, leading line and legends 055° and 235°	055°, 1080 metres from front range beacon (D2003056) DFO(6600916-02)
Delete	front range beacon	53°53'42.0"N 097°58'22.0"W (D2003057) DFO(6600917-01)

SECTION 3 – Edition 08/2003  
CORRECTIONS TO RADIO AIDS TO MARINE NAVIGATION

**CANADIAN COAST GUARD PUBLICATION – AMENDMENT TO THE RADIO AIDS TO MARINE  
NAVIGATION (ATLANTIC, ST. LAWRENCE, GREAT LAKES, LAKE WINNIPEG AND EASTERN ARCTIC)  
PUBLICATION – 2003 – PART 1**

Add on page 1-2, the following advance notice:

**7) Automatic Identification System (AIS)**

**Installation of AIS shore base equipment at MCTS Centres in Canada.**

The Canadian Coast Guard's Marine Communications and Traffic Services are in the process of installing Automatic Identification System equipment at selected radio sites associated with MCTS Centres (St John's, Placentia Bay, Halifax, Les Escoumins, Quebec, Montreal, Sarnia and Comox) for testing purposes. The AIS equipment is in "**Operational on Test**" Status. Therefore mariners may observe on their AIS display an AIS ICON identifying a shore base station. If you need more information contact the above MCTS Centres.

Additional information regarding the implementation of the National AIS infrastructure will be provided as required.

**CANADIAN COAST GUARD PUBLICATION – AMENDMENT TO THE RADIO AIDS TO MARINE  
NAVIGATION (ATLANTIC, ST. LAWRENCE, GREAT LAKES, LAKE WINNIPEG AND EASTERN ARCTIC)  
PUBLICATION – 2003**

**Page 2-26**

**MCTS Port aux Basques/VOJ – Broadcasts:**

Under Frequency Ch 28B

**Delete :** Bonne Bay

Under Frequency Ch83B

**Add:** Bonne Bay

Under RADIOTELEPHONY: (English)

**Delete:**

"CMB from Ramca Island and Table Mountain is unilingual English only"

All other information remains the same.

**CANADIAN COAST GUARD PUBLICATION – AMENDMENT TO THE RADIO AIDS TO MARINE  
NAVIGATION (ATLANTIC, ST. LAWRENCE, GREAT LAKES, LAKE WINNIPEG AND EASTERN ARCTIC)  
PUBLICATION – 2003**

**Page 3-16**

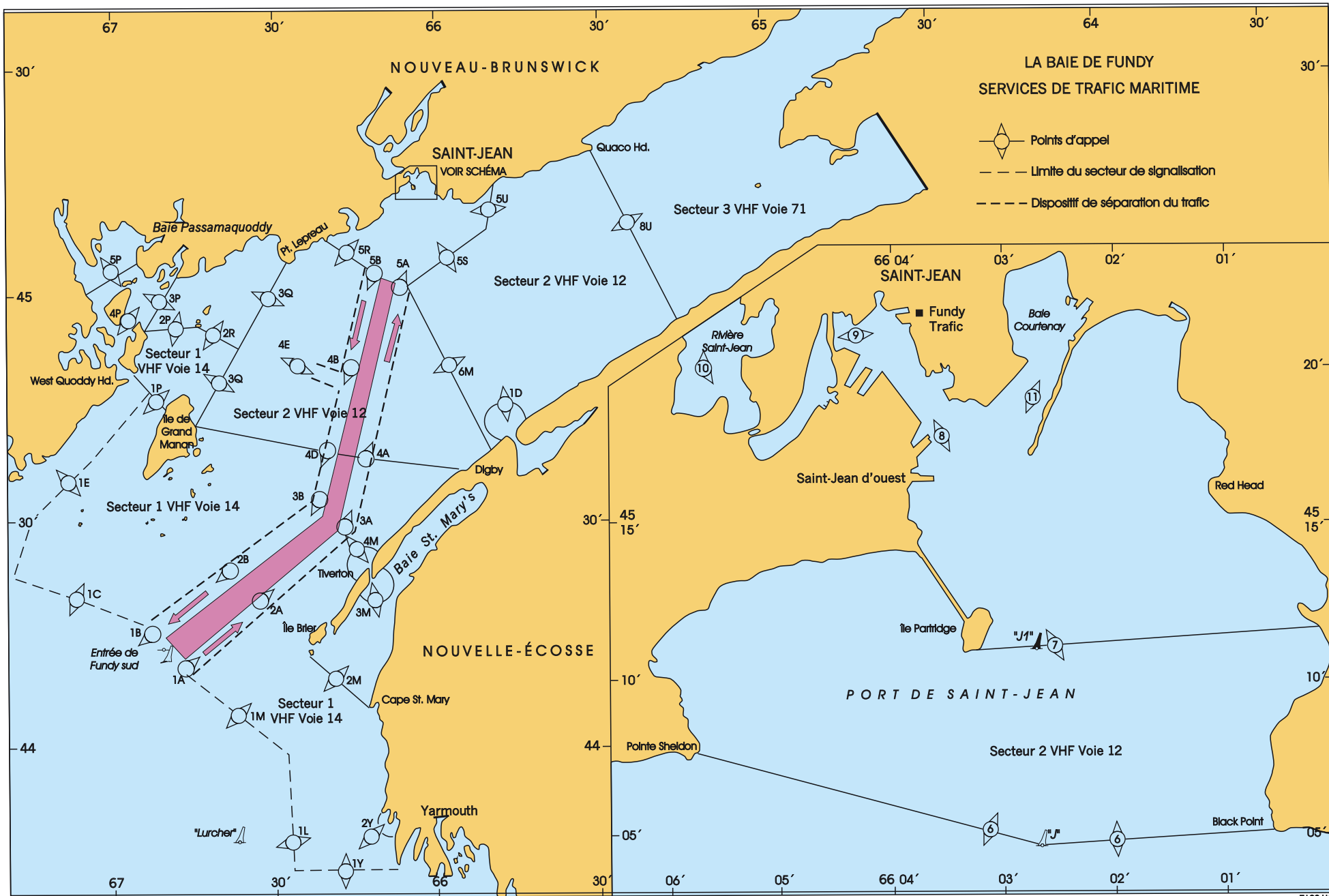
***VESSEL TRAFFIC SERVICES ZONE SCHEDULES  
BAY OF FUNDY VESSEL VTS ZONE***

**DELETE** – CHART (Pg 3-16)

**MODIFY** - (WITH ATTACHED CHART)



3-16



**SECTION 4 – Edition 08/2003  
SAILING DIRECTIONS**

Labrador and Hudson Bay, Sixth Edition, 1988 —

- Page 150 — After paragraph 193  
Insert: *Charts 4701, 5032* (N2003-09.5)
- Page 153 — Top left column, after “4701”  
Add: 5032 (N2003-09.6)
- Page 153 — After paragraph 198, after “4702”  
Add: 5032 (N2003-09.7)
- Pages 154, 155, 156 and 158 — Top left column, after “4702”  
Add: 5032 (N2003-09.8)
- Page 158 — After paragraph 253  
Insert: *Charts 4702, 5033* (N2003-09.9)
- Pages 160, 162, 164 and 165 — Top left column, after “4702”  
Add: 5033 (N2003-10.0)
- Page 160 — After paragraph 268  
Delete: *Chart 4712* (N2003-10.1)
- Page 160 — After paragraph 285, after “4702”  
Add: 5033 (N2003-10.2)
- Page 163 — After paragraph 3, after “4702”  
Add: 5033 (N2003-10.3)
- Page 163 — After paragraph 4  
Delete: *Chart 4712* (N2003-10.4)
- Page 163 — After paragraph 11  
Delete: *Chart 4702* (N2003-10.5)
- Page 164 — After paragraph 13  
Delete: *Charts 4712, 4702* (N2003-10.6)

**SECTION 4 – Edition 08/2003  
SAILING DIRECTIONS**

Page 164 — After paragraph 17  
Delete: *Chart 4702*

(N2003-10.7)

Page 165 — After paragraph 39  
Insert: *Chart 4702*

(N2003-10.8)

Page 174 — Paragraph 162, last line (Re: Correction promulgated in Monthly Edition No. 4/1999)  
Delete: isolated danger  
Replace by: south cardinal

(N2003-10.9)

Page 241 — Paragraph 245, last line  
Add: West cardinal light **buoy** NHH (321.62) is moored 0.19 mile NW of Ellen Island. East cardinal light **buoy** NH (321.77) is moored 0.1 mile ESE of Seneraluk Rock. Port and starboard hand spar light **buoys** NH3 and NH4 (321.4, 321.45) mark the entrance to Hopedale Harbour.

(N2003-11.0)

Page 273 — Paragraph 599, lines 1 and 2  
Delete: 18-foot (5.5 m)  
Replace by: 12-foot (3.7 m)

(N2003-11.1)

ATL 102 — Newfoundland — East and South Coasts, First Edition, 1995 —

Page 4 — Paragraph 31, line 1  
Delete: and whistle

(N2003-09.0)

Page 6 — Paragraph 62, last line  
Cancel correction promulgated in Monthly Edition No. 10/2002.

(N2003-09.1)

Page 23 — Paragraph 232, lines 3 and 4  
Delete: “Fairway ... Point.”  
Replace by: Port hand spar light **buoy** TP1 (471.51) is moored 0.3 mile WSW of Skerwink Point.

(N2003-09.2)

Page 26 — Paragraph 248, line 6  
Delete: and bell

(N2003-09.3)

**SECTION 4 – Edition 08/2003  
SAILING DIRECTIONS**

ATL 110 — St. Lawrence River — Cap Whittle/Cap Gaspé to Les Escoumins and Anticosti Island, Second Edition, 2002 —

Page 26 — **Table 1.3 Sept-Îles — Wharves**

Please make the following correction in the “**Remarks**” column.

<b>Berth</b>	<b>Remarks</b>	
<b>Quai de la Relance</b>		
41	**Dredged in 2001.	(Q2003-048.1)

Page 27 — Paragraph 295, line 5

Delete: 14 m

Replace by: 13.3 m

(Q2003-048.2)

Page 28 — Paragraph 300, line 1

Delete: private

(Q2003-048.3)

**SECTION 5 – Edition 08/2003**  
**LIST OF LIGHTS, BUOYS AND FOG SIGNALS CORRECTIONS**

No.	Name	Position ----- Latitude N. Longitude W.	Light Characteristics	Focal Height in m. above water	Nomi- nal Range	Description ----- Height in meters above ground	Remarks ----- Fog Signals
<b>NEWFOUNDLAND</b>							
10.51	Branch East Inner Breakwater	46 52 54 53 57 02	Fl R	4s	.....	2 Grey cylindrical mast. 2.1	Year round.  Chart:4842 Edn 08/03(N00-031)
75.52	Allan's Island Wharf	46 51 22.4 55 48 17.4	Fl G	4s	3.1	2 Grey cylindrical mast. 2.1	Year round.  Chart:4642 Edn 08/03(N00-298)
106.51	Grand Bank Float Dock	47 05 57.4 55 45 02.9	Fl G	4s	.....	2 Cylindrical mast.	Year round.  Chart:4832 Edn 08/03
108	Grand Bank Breakwater	On seaward end of Outermost Breakwater. 47 06 08 55 44 52.5	Fl R	4s	5.6	4 Red cylindrical mast. 3.2	Year round.  Chart:4832 Edn 08/03(N01-065)
140.51	Turnip Island Rock light buoy QR2	47 30 46.2 57 22 32.5	Fl R	4s	.....	..... Red spar, marked "QR2".	Year round.  Chart:4825 Edn 08/03(N99-175)
140.53	Shoal Northwest light buoy QR5	47 31 22.1 57 22 38.9	Fl G	4s	.....	..... Green spar, marked "QR5".	Year round.  Chart:4825 Edn 08/03(N99-177)
144.512	Stern Rock light buoy QV2.2	47 35 17.2 57 40 17.3	Fl R	4s	.....	..... Green spar, marked "QV2.2".	Year round.  Chart:4825 Edn 08/03(N99-178)
144.52	Marchand Rock light buoy QV2.4	47 35 28 57 39 35	Fl R	4s	.....	..... Red spar, marked "QV2.4".	Year round.  Chart:4825 Edn 08/03(N99-179)
144.53	Sandbanks # 1 light buoy QV2.6	47 35 48 57 38 58	Fl R	4s	.....	..... Red spar, marked "QV2.6".	Year round.  Chart:4825 Edn 08/03(N99-180)
144.54	Sandbanks # 2 light buoy QV3.7	47 35 56 57 39 00	Fl G	4s	.....	..... Green spar, marked, "QV3.7".	Year round  Chart:4825 Edn 08/03(N99-181)
144.55	North of Douglas light buoy QV2.8	47 36 03 57 37 42.1	Fl R	4s	.....	..... Red spar, marked "QV2.8".	Year round.  Chart:4825 Edn 08/03(N99-172)
144.56	Indian Hide Tickle light buoy QV4	47 36 17 57 36 48.4	Fl R	4s	.....	..... Red spar, marked "QV4".	Year round.  Chart:4825 Edn 08/03(N99-173)
149	Rose Blanche light and whistle buoy QR						Delete from list.  Chart:4635 Edn 08/03(N02-135)

**SECTION 5 – Edition 08/2003**  
**LIST OF LIGHTS, BUOYS AND FOG SIGNALS CORRECTIONS**

No.	Name	Position ----- Latitude N. Longitude W.	Light Characteristics	Focal Height in m. above water	Nomi- nal Range	Description ----- Height in meters above ground	Remarks ----- Fog Signals
<b>NEWFOUNDLAND</b>							
151	Rose Blanche (Cain's Island)						Delete from list  Chart:4635 Edn 08/03(N02-088)
151.07	Cain's Island light	47 36 06.3 58 41 40.6	Fl R	6s	..... 3	On top of fog horn. 2.3	Year round.  Chart:4639 Edn 08/03(N02-089)
151.08	Cain's Island Fog Signal	47 36 06.3 58 41 40.6	.....	.....	.....	.....	Horn - Blast 4s; sil 56s. Year round.  Chart:4639 Edn 08/03(N02-092)
151.09	Rose Blanche (Cain's Island) Fog Signal						Delete from list  Chart:4635 Edn 08/03(N02-090)
174.3	Beach Point light buoy XY4	47 52 38.8 59 23 43.4	Fl R	4s	.....	Red spar, marked "XY4".	Seasonal.  Chart:4682 Edn 08/03(N02-046)
215.6	Anchor Point light buoy XA2	51 13 24.7 56 48 25	Fl R	4s	.....	Red, marked "XA2".	Seasonal.  Chart:4667 Edn 08/03(N02-063)
221.31	Bartletts Cove Wharf	50 56 28.5 56 59 29.2	Fl G	4s	3.5 2	Grey cylindrical skeleton mast. 2.1	Year round.  Chart:4680 Edn 08/03(N00-337)
239.22	Vanguard Shoal light buoy KN1	51 29 20.4 55 27 04	Fl G	4s	.....	Green spar, marked "KN1"	Seasonal.  Chart:4507 Edn 08/03(N01-072)
239.25	Harbour Shoal light buoy KN5	51 29 57 55 27 55	Fl G	4s	.....	Green spar, marked "KN5".	Seasonal.  Chart:4507 Edn 08/03(N00-360)
239.251	Wharf Rock light buoy KN4	51 27 59.7 55 28 27.3	Fl R	4s	.....	Red spar, marked "KN4".	Seasonal.  Chart:4507 Edn 08/03(N00-340)
239.27	St. Lunaire Wharf	51 29 59.4 55 26 27	Fl R	4s	3.5 2	Grey cylindrical skeleton mast. 4.5	Seasonal.  Chart:4507 Edn 08/03(N00-336)
279.29	Mad Moll Rock light buoy NL2	52 42 50.8 55 48 03.9	Fl R	4s	.....	Red, marked "NL2".	Seasonal.  Chart:4702 Edn 08/02(N03-005)
279.72	Barr Tickle Shoal light buoy NM	52 46 36 55 54 18	Fl R (2+1)	6s	.....	Red, green and red spar, marked "NM"	Seasonal.  Chart:4702 Edn 08/03(N02-160)
279.83	The Sisters light buoy NL4	53 43 02.2 55 49 20.4	Fl R	4s	.....	Red, marked "NL4".	Seasonal.  Chart:4702 Edn 08/03(N03-006)

**SECTION 5 – Edition 08/2003**  
**LIST OF LIGHTS, BUOYS AND FOG SIGNALS CORRECTIONS**

No.	Name	Position ----- Latitude N. Longitude W.	Light Characteristics	Focal Height in m. above water	Nomi- nal Range	Description ----- Height in meters above ground	Remarks ----- Fog Signals
<b>NEWFOUNDLAND</b>							
350.6	Phillips Head Wharf	49 13 30 55 18 23	Fl R	4s	.....	1.4 Grey cylindrical mast. 2.1	Seasonal.  Chart:4597 Edn 08/03(N00-017)
352.5	Porterville Wharf	49 15 26 55 11 33	Fl R	4s	.....	4 Grey cylindrical mast. 2.4	Seasonal.  Chart:4596 Edn 08/03(N00-013)
361.01	Exploits Outer light buoy DE4	49 31 07 55 03 42	Fl R	4s	.....	..... Red spar, marked "DE4"	Seasonal.  Chart:4520 Edn 08/03(N00-199)
361.02	Exploits Outer light buoy DE5	49 31 03 55 03 34	Fl G	4s	.....	..... Green spar, marked "DE5"	Seasonal.  Chart:4520 Edn 08/03(N00-200)
361.03	Exploits Inner light buoy DE6	49 31 22 55 03 40	Fl R	4s	.....	..... Red spar, marked "DE6".	Seasonal.  Chart:4520 Edn 08/03(N00-201)
361.04	Exploits Inner light buoy DE7	49 31 14 55 03 38	Fl G	4s	---	..... Green spar, marked "DE7"	Seasonal.  Chart : 4520 Edn 08/03(N00-202)
481	Harbour Grace						Delete from list  Chart:4849 Edn 08/03(N02-003)
<b>ATLANTIC</b>							
970.5	Bear Reef light buoy NN2	46 00 44.2 62 26 17.1	Q R	1s	.....	..... Red spar, marked "NN2".	Seasonal.  Chart:4420 Edn.08/03 (G03-052)
1084.5	Tignish Harbour light buoy JX2	Off Tignish Harbour. 46 56 36.2 63 57 12.6	Fl R	4s	.....	..... Red spar, marked "JX2".	Seasonal.  Chart:4023 Edn 08/03(G03-059)
1651 H1828	Cap de la Madeleine	On cape. 49 15 03.5 65 19 32.3	Fl(3) W	27s	44.5	20 White cylindrical tower. 16.8	Flash 0.18 s; eclipse 4.32 s; flash 0.18 s; eclipse 4.32 s; flash 0.18 s; eclipse 17.82 s Year round. Privately maintained by l'Association Touristique Madeleine.
2286 H2456	Courbe de Bellmouth	45 55 12.9 73 12 31.1	F R	.....	22.1	15 White skeleton tower, fluorescent orange and white rectangular daymark. 11.9	Visible on a bearing of 024°46'. Emergency light. Year round.  Chart:1311 Edn 08/03 (L03-238)

**SECTION 5 – Edition 08/2003**  
**LIST OF LIGHTS, BUOYS AND FOG SIGNALS CORRECTIONS**

No.	Name	Position ----- Latitude N. Longitude W.	Light Characteristics	Focal Height in m. above water	Nomi- nal Range	Description ----- Height in meters above ground	Remarks ----- Fog Signals	
<b>ATLANTIC</b>								
2290 H2458	Route de Contrecoeur range	On E. bank. 45 55 19.5 73 12 32.4	F Y	.....	26.2	19	Square skeleton tower, fluorescent orange slatwork daymark, black vertical stripe. 16.8	Emergency light. Visible in line of range. Year round.
2291 H2458.1		033°10' 772.5m from front.	F Y	.....	42.3	19	Skeleton tower, fluorescent orange slatwork daymark, black vertical stripe. 23.7	Emergency light. Visible in line of range. Year round.
Inland LL 2522 H13.84	Cambridge Bay range 2	69 05 13 104 57 00	F Y	.....	10.1	14	Grey square skeleton mast, red daymark, white vertical stripe. 4.6	Visible in line of range. Seasonal.
Inland LL 2523 H13.85		015° 426.7m from front.	F Y	.....	12.8	14	Grey skeleton tower, red daymark, white vertical stripe. 6.1	Visible in line of range. Seasonal.
							<b>Chart:1311</b> <b>Edn 08/03(L03-239)</b>	
							<b>Chart:7750</b> <b>Edn 08/03(A03-004,005)</b>	
<b>INLAND</b>								
16.1	Kahnawake range	45 24 10.3 73 47 45.7	F W	.....	9.9	15	White cylindrical tower, fluorescent red rectangular daymark, black vertical stripe.	Visible in line of range. Visible 360°. Operates at night only. Seasonal.
16.2		266°36' 513.4m from front.	F W	.....	19.0	15	White cylindrical tower, fluorescent red daymark, black vertical stripe.	Visible in line of range. Operates at night only. Seasonal.
							<b>Chart:1410</b> <b>Edn 08/03</b>	
537.73	Hamilton Harbour Pier 27	North end of pier. 43 17 01 79 47 38.6	Fl G	4s	.....	.....	White cylindrical mast. 5.5	Maintained by Hamilton Harbour Commission. Seasonal.
							<b>Chart:2067</b> <b>Edn 08/03(B03-28)</b>	
2522 H13.84	Cambridge Bay range 2	69 05 13 104 57 00	F Y	.....	10.1	14	Grey square skeleton mast, red daymark, white vertical stripe. 4.6	Visible in line of range. Seasonal.
2523 H13.85		015° 426.7m from front.	F Y	.....	12.8	14	Grey skeleton tower, red daymark, white vertical stripe. 6.1	Visible in line of range. Seasonal.
							<b>Chart:7750</b> <b>Edn 08/03(A03-004,005)</b>	



**CANADIAN COAST GUARD  
MARINE INFORMATION REPORT AND SUGGESTION SHEET**

Navigating Officer or Observer: \_\_\_\_\_ Captain: \_\_\_\_\_

Ship (or address) \_\_\_\_\_

If Merchant Vessel add Line or Company with Head Office address: \_\_\_\_\_

General locality: \_\_\_\_\_

Subject: \_\_\_\_\_

Approx. position: \_\_\_\_\_ Lat. \_\_\_\_\_ Long \_\_\_\_\_

Chart No. used to plot: \_\_\_\_\_ (Corrected to N/M No. \_\_\_\_\_ of 2000 ) \_\_\_\_\_ Publications

affected: (Quote Volume and page)

\* Full details (Attach additional sheets as necessary)

Time (UTC) \_\_\_\_\_ Date \_\_\_\_\_

**INSTRUCTIONS:**

Mariners are requested to notify the responsible authorities when new or suspected dangers to navigation are discovered, changes are observed in aids to navigation, or corrections to publications are seen to be necessary.

*\* In the case of new or suspected dangers to navigation, it is important that all details be given in order to aid with future investigations. Items of interest include heights, depths, physical description, type of bottom and equipment method used to position the item. It is helpful to mark details on chart, which will be promptly replaced by the Canadian Hydrographic Service.*

Reports should be made to the nearest Marine Communications and Traffic Services Centre and should be confirmed in writing to:

Director, Navigation Systems  
Canadian Coast Guard  
Department of Fisheries and Oceans  
Ottawa, Ontario, K1A 0E6

In the case of information Canadian  
navigational aids or the List Department  
of Lights, Buoys and Fog Signals.

**OR**

Dominion Hydrographer  
Canadian Hydrographic Service  
Department of Fisheries and Oceans  
Ottawa, Ontario, K1A 0E6

In the case of new or suspected  
dangers to navigation, or where  
corrections to "Sailing Directions"  
appear to be necessary.