



Fisheries and Oceans
Canada

Pêches et Océans
Canada

Canadian
Coast Guard

Garde côtière
canadienne

Notices to Mariners

Edition No. 04/2024
April 26, 2024



Safety First, Service Always

Monthly Western Edition

Canada 

Notices to Mariners – Monthly Western Edition
Edition No. 04/2024

Aussi disponible en français :
Avis aux navigateurs – Édition mensuelle de l'Ouest
Édition n° 04/2024

Published under the Authority of:

Canadian Coast Guard Programs
Aids to Navigation and Waterways
Fisheries and Oceans Canada
Montreal, QC H2Y 2E7

For more information, contact DFO.Notmar-Notmar.MPO@dfo-mpo.gc.ca.

© His Majesty the King in Right of Canada,
as represented by the Minister of Fisheries, Oceans
and the Canadian Coast Guard, 2024.

Cat. No. Fs152-9E-PDF (Electronic PDF, English)
ISSN 2817-0253

Cat. No. Fs152-9F-PDF (Electronic PDF, French)
ISSN 2817-0261

A web version is available here:

[Notices to Mariners – Monthly Editions](#) (English)

[Avis aux navigateurs – Publications mensuelles](#) (French)

Explanatory Notes – Notices to Mariners (NOTMAR)

Geographical positions refer directly to the graduations of the largest scale Canadian Hydrographic Service chart (unless otherwise indicated).

Bearings refer to the true compass and are measured clockwise from 000° (North) clockwise to 359°; those relating to lights are from seaward.

Visibility of lights is that in clear weather.

Depths - The units used for soundings (metres, fathoms or feet) are stated in the title of each chart.

Elevations are normally given above Higher High Water, Large Tide (unless otherwise indicated).

Distances may be calculated as follows:

- 1 nautical mile = 1,852 metres (6,076.1 feet)
- 1 statute mile = 1,609.3 metres (5,280 feet)
- 1 metre = 3.28 feet

Temporary and Preliminary Notices to Mariners – Section 1A of *Notices to Mariners*

These notices are indicated by a (T) or a (P), respectively. Please note that nautical charts are not amended by the Canadian Hydrographic Service for temporary (T) and preliminary (P) notices. It is recommended that mariners chart these corrections in pencil. For the list of charts affected by (T) & (P) notices, please refer to the current [Notices to Mariners - Monthly Summary of Temporary and Preliminary Notices](#) publication.

Suggestions and Corrections Form

This form is specifically for suggestions and corrections to Notices to Mariners publications. It is available [online](#) and also in [fillable PDF format](#) included with the monthly publication ZIP file.

To submit comments and suggestions on possible improvements to the various publications and services: DFO.Notmar-Notmar.MPO@dfo-mpo.gc.ca.

To report chart discrepancies and/or corrections to the *Canadian Sailing Directions* booklets: Fill out the [Marine Information Reporting Form](#) and/or email chsinfo@dfo-mpo.gc.ca.

To report emergencies or navigational hazards: [Contact your nearest MCTS centre](#)

- VHF channel 16 (156.8 MHz)
- MF/HF frequency 2182 kHz/4125 kHz (where available)
- *16 on a cellphone (where available)

NOTMAR Website – Monthly Editions, Chart Corrections and Chart Patches

The NOTMAR website allows users to access the [monthly publications](#), [chart corrections](#), and [chart patches](#).

Users can subscribe for free to the [email notification service](#) to receive notifications when charts of interest are updated, including their patches, as well as when a new Monthly Edition of *Notices to Mariners* is published.

In addition, the monthly publication and related files to download, such as chart patches, can be obtained all together through the download of a single ZIP file.

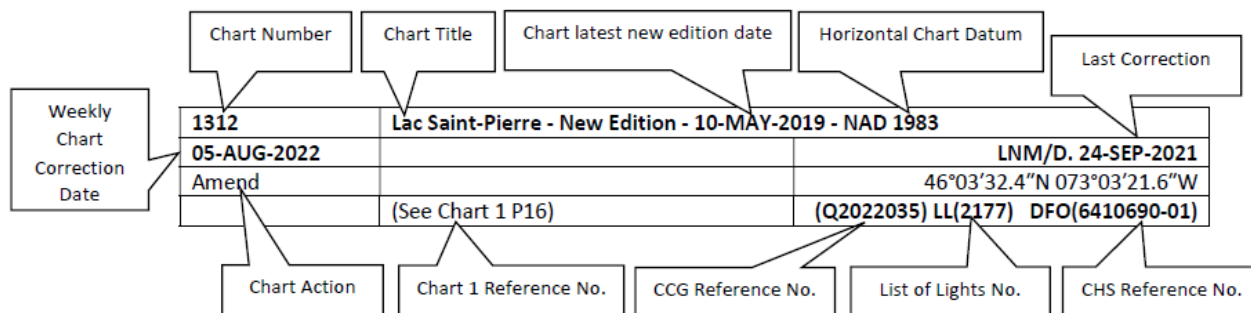
Explanatory Notes – Canadian Hydrographic Service (CHS)

Chart Corrections – Section 2 of *Notices to Mariners*

Corrections to nautical charts will be listed in numerical order by chart number. Each chart correction listed applies only to that particular chart. Related charts, if any, will have their own specific correction listed separately.

Users should also refer to CHS *Chart 1: Symbols, Abbreviations and Terms* for additional information pertaining to the correction of charts.

The illustration below describes the elements that will comprise a typical Section 2 chart correction:



The last correction number is identified with the **LNM/D** or **Last Notice to Mariners Number / Date**.

Mariners are advised that only the most critical changes that directly affect safety to navigation are issued in “Section 2 – Chart Corrections.” This limitation is required to ensure that charts remain as clear and easy to read as possible. As a result, mariners may see minor discrepancies of a non-critical nature between information in official publications. For example, a small change in the nominal range or focal height of a light may not result in the production of a chart correction in *Notices to Mariners*, but may result in a correction in the [List of Lights, Buoys and Fog Signals](#) publication.

Note: In the case of a discrepancy between information provided on CHS charts relating to aids to navigation, and the *List of Lights, Buoys and Fog Signals* publication, the latter shall be deemed as containing the most up-to-date information.

Canadian Nautical Charts & Publications

A source list of Canadian nautical charts and publications is published in Notice No. 14 of the *Notices to Mariners Annual Edition 2024*. The source supply and the prices effective at the time of printing are listed. For current chart edition dates, please refer to the [Canadian Hydrographic Service – List of Charts](#).

Explanatory Notes – Marine Communications and Traffic Services (MCTS)

Navigational Warnings / Notices to Shipping

The Canadian Coast Guard (CCG) is implementing a number of changes to the aids to navigation system in Canada.

These changes are advertised as Navigational Warnings, formerly called Notices to Shipping¹, that are broadcast by the CCG, and are then followed up with Notices to Mariners, then charts are updated by hand correction, reprints or new editions.

Mariners are advised that all relevant Navigational Warnings (NAVWARN) should be kept until superseded by Notices to Mariners or through revised charts issued by the Canadian Hydrographic Service (CHS).

NAVWARN are accessible on the applicable regional page on the [CCG Navigational Warnings](#).

CHS is reviewing the impact of these changes with CCG and together are preparing an action plan on the issuing of chart revisions.

For further information, contact your regional NAVWARN Issuing Desk.

| | |
|--|--|
| <p>Western Region Prince Rupert MCTS Centre</p> <p>“P” Series NAVWARN</p> <p>Canadian Coast Guard Bag 4444 Prince Rupert, BC V8J 4K2</p> <p>Telephone: 250-627-3070</p> <p>Email: NAVWARN.MCTSPrinceRupert@innav.gc.ca</p> | <p>Arctic Region *Iqaluit MCTS Centre</p> <p><i>Operational from approximately mid-May until late December.</i></p> <p>“A” Series NAVWARN</p> <p>Canadian Coast Guard P.O. Box 189 Iqaluit, NU X0A 0H0</p> <p>Telephone: 867-979-5269 Facsimile: 867-979-4264</p> <p>Email: NAVWARN.MCTSIqaluit@innav.gc.ca</p> |
|--|--|

*Service available in English and in French.

¹ The expression “Notice to Shipping” was changed to “Navigational Warning” in January 2019.

Table of Contents

| | |
|--|-----------|
| Section 1: General and Safety Information | 1 |
| *505/23 Canadian Hydrographic Service – Magnetic Declination Calculations | 1 |
| *1004/23 Transport Canada – British Columbia North Coast Waterway Management Guidelines | 1 |
| *1207/23 Canadian Hydrographic Service – Inappropriate Geographical Names Review Process..... | 2 |
| *208/24 West Coast Haida Gwaii – Voluntary Protection Zone for Shipping..... | 3 |
| *304/24 Canadian Hydrographic Service – Chart 3895 Partially Replaced by New Chart 3816 | 4 |
| *402/24 Canadian Hydrographic Service – Nautical Charts..... | 4 |
| *403/24 Canadian Hydrographic Service – Electronic Navigational Charts..... | 5 |
| *404/24 Canadian Hydrographic Service – Raster Digital Charts (BSB V3)..... | 5 |
| *405/24 Transport Canada – Ship Safety Bulletin #09 and #10/2024..... | 6 |
| *408/24 Canadian Coast Guard Publication - Amendments to the Notices to Mariners Annual Edition 2024 - Section E, Notice 31: Reporting Marine Occurrences..... | 6 |
| *409/24 Canadian Hydrographic Service – Chart 3811 Permanently Withdrawn..... | 6 |
| Section 1A: Temporary and Preliminary Notices | 7 |
| Reminder – Comment Period for Active Preliminary Notices | 7 |
| Section 2: Chart Corrections | 8 |
| Section 3: Radio Aids to Marine Navigation Corrections | 15 |
| *415/24 Radio Aids to Marine Navigation 2024 (Atlantic, St. Lawrence, Great Lakes, Lake Winnipeg, Arctic and Pacific)..... | 15 |
| Section 4: Canadian Sailing Directions Corrections | 21 |
| Section 5: List of Lights, Buoys and Fog Signals Corrections | 22 |

Numerical Index of Canadian Charts Affected

This numerical index lists all nautical charts mentioned in this monthly edition of Notices to Mariners. Only charts appearing in Section 2 of this publication require a chart correction. The appearance of charts in all other sections, particularly those related to the correction of other nautical publications, is included here for reference.

| Chart No. | Pages | Chart No. | Pages | Chart No. | Pages |
|-----------|------------------------|-----------|-------|-----------|-------|
| 3000 | 8 | | | | |
| 3001 | 8 | | | | |
| 3441 | 8, 9 | | | | |
| 3458 | 22 | | | | |
| 3462 | 9, 10 | | | | |
| 3479 | 10 | | | | |
| 3488 | 11 | | | | |
| 3489 | 11, 12 | | | | |
| 3493 | 12 | | | | |
| 3512 | 12 | | | | |
| 3514 | 12 | | | | |
| 3534 | 22 | | | | |
| 3535 | 12 | | | | |
| 3546 | 22 | | | | |
| 3548 | 13 | | | | |
| 3549 | 13 | | | | |
| 3601 | 14 | | | | |
| 3604 | 22 | | | | |
| 3744 | 14, 22 | | | | |
| 3811 | 6 | | | | |
| 3816 | 4 | | | | |
| 3859 | 4 | | | | |
| 3895 | 4 | | | | |
| 3902 | 14 | | | | |
| 3935 | 14 | | | | |
| 3957 | 14 | | | | |
| 3981 | 14 | | | | |

Section 1: General and Safety Information

***505/23 Canadian Hydrographic Service – Magnetic Declination Calculations**

(Recurrent publication of notice *505/23, originally published in the *Notices to Mariners – Monthly Western Edition 05/2023* publication.)

Mariners are advised that CHS has adopted the harmonized World Magnetic Model (WMM), as found on the NCEI/NOAA website. Old compass rose declination information on CHS navigational products can be updated using the [Magnetic Declination Estimated Value](#) website. While the differences in the model declinations are small each year, they can become more significant over a large period of time.

***1004/23 Transport Canada – British Columbia North Coast Waterway Management Guidelines**

(Recurrent publication of notice *1004/23, originally published in the *Notices to Mariners – Monthly Western Edition 10/2023* publication.)

Reference: Notice *905/22 is cancelled.

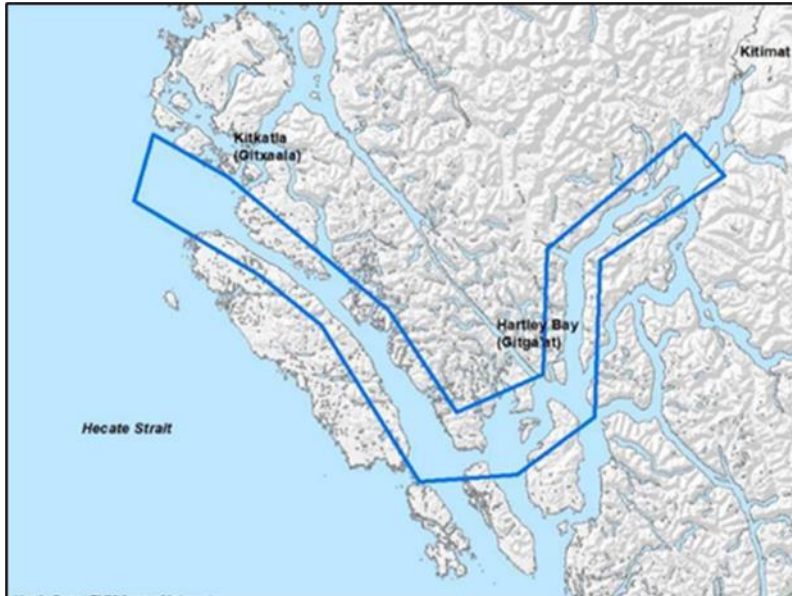
The North Coast Waterway Management Guidelines are voluntary guidelines that aim to improve safety on the water by reducing conflicts between First Nations' marine use activities, such as fishing and shoreline harvesting, and commercial vessels on the shipping route between Kitimat and Browning Entrance. The guidelines came into effect on September 1, 2022, and will be reviewed from time to time.

The guidelines apply to all vessels navigating on the route between Kitimat and Browning Entrance, on the north coast of British Columbia. This area includes:

- Douglas Channel
- Wright Sound
- Lewis Passage
- Otter Channel
- Nepean Sound, and
- Principe Channel

The complete guidelines document is available at [British Columbia North Coast Waterway Management Guidelines](#).

Nothing in these guidelines replaces or changes how we apply any Canadian or international laws or regulations, including the Collision Regulations. Furthermore, nothing in these guidelines prevents or limits the master or pilot of a ship from making any decisions to protect the vessel, the crew, or the marine environment.



The guidelines include information for:

- all vessels that covers:
 - inshore safety zones
 - routing measures
 - speed reductions
 - guidelines for meeting and passing
 - a special operating area in Wright Sound, and
 - guidelines in case of a mechanical or electrical breakdown
- large commercial ships, including bulk carriers, general cargo vessels, liquid bulk vessels, and passenger vessels
- tugs and barges, and
- vessels operating in First Nations Areas of Concern where you must pay special attention to make sure local community users can transit and use the area safely.

***1207/23 Canadian Hydrographic Service – Inappropriate Geographical Names Review Process**

(Recurrent publication of notice *1207/23, originally published in the *Notices to Mariners – Monthly Western Edition 12/2023* publication.)

The records of the Canadian Hydrographic Service could contain geographical names that may be considered inappropriate, offensive and derogatory. Geographical naming authorities are in the process of addressing many offensive place names, the review process is underway. For more information, about inappropriate geographical names, please see the [following announcement](#).

***208/24 West Coast Haida Gwaii – Voluntary Protection Zone for Shipping**

(Recurrent publication of notice *208/24, originally published in the *Notices to Mariners – Monthly Western Edition 02/2024* publication.)

Reference: Notice *1105/21 is cancelled.

**Voluntary Protection Zone for Shipping, western shore of Haida Gwaii
(formerly Queen Charlotte Islands)**

Haida Gwaii's remote location, rugged coastline, variable sea and weather conditions, and rich ecological and cultural heritage make it vulnerable to the potential for pollution from shipping breakdowns and accidents. Increasing the distance vessels travel offshore can increase the amount of time available to address propulsion, steering or other issues, and the likelihood of a towing vessel being able to respond to a vessel in distress or drifting. This in turn reduces the risk of grounding and oil spills.

A Voluntary Protection Zone for Shipping on the western shore of Haida Gwaii is currently in effect. In the Voluntary Protection Zone, commercial vessels of 500 gross tonnage or greater are requested to observe a minimum distance of 50 nautical miles from the western shore of Haida Gwaii with the following exemptions:

Exemptions from requested 50 nm distance:

- Cruise vessels, which are asked to observe a minimum 12 nm distance from shore;
- Vessels transiting from Alaska to British Columbia or Washington State, or vice versa, through the Voluntary Protection Zone are asked to observe a distance of at least 25 nm from shore
- No minimum distance is requested for tugs and barges (including pushing and towing alongside) or vessels engaged in commercial fishing.
- Vessels to which this bulletin applies are not required to observe requested minimum distances if doing so may compromise navigational, vessel, passenger or cargo safety.

The Voluntary Protection Zone for Shipping coordinates are:

| | |
|---------------|----------------|
| 54° 15.436' N | 133° 04.788' W |
| 54° 17.572' N | 134° 02.484' W |
| 54° 13.614' N | 134° 19.427' W |
| 54° 11.786' N | 134° 30.841' W |
| 53° 44.036' N | 134° 32.677' W |
| 53° 11.118' N | 134° 16.412' W |
| 52° 18.483' N | 133° 20.917' W |
| 51° 24.590' N | 132° 04.081' W |
| 51° 56.158' N | 131° 01.830' W |

Vessels are requested to adhere to these distances on a voluntary basis and only when it does not jeopardize the safety of navigation, the vessel, the persons onboard, and the cargo.



***304/24 Canadian Hydrographic Service – Chart 3895 Partially Replaced by New Chart 3816**

(Recurrent publication of notice *304/24, originally published in the *Notices to Mariners – Monthly Western Edition 03/2024* publication.)

Chart 3895, Plans – Dixon Entrance, has been partially replaced by new chart 3816, Parry Passage. The plan titled Parry Passage is now cancelled. The remaining plans will be cancelled at a later date.

***402/24 Canadian Hydrographic Service – Nautical Charts**

| Charts | Main Title | Scale | Edition Date | Published | Cat# | Price |
|-------------------------------------|---------------|----------|--------------|------------|------|---------|
| New Charts | | | | | | |
| 3816 | Parry Passage | 1:22 000 | 2024-02-02 | 2024-04-26 | 2 | \$20.00 |
| Charts Permanently Withdrawn | | | | | | |
| 3859 | Tasu Sound | | | | | |

***403/24 Canadian Hydrographic Service – Electronic Navigational Charts**

| S-57 ENC Number | Chart Title | ENC Compilation Scale | Published |
|-------------------------------------|---|---|------------|
| New Charts | | | |
| CA370766 (Edn 1.000) | Saanich to Point Roberts | 1:45 000 | 2024-04-26 |
| CA571158 (Edn 1.000) | Murchison-Faraday Passage | 1:6 000 | 2024-04-19 |
| CA58PKVA (Edn 1.000) | CA58PKVA | 1:11 000 | 2024-04-12 |
| CA58PKWA (Edn 1.000) | CA58PKWA | 1:11 000 | 2024-04-12 |
| CA58PKXA (Edn 1.000) | CA58PKXA | 1:6 000 | 2024-04-12 |
| CA58QKWA (Edn 1.000) | CA58QKWA | 1:11 000 | 2024-04-12 |
| CA58QKXA (Edn 1.000) | CA58QKXA | 1:11 000 | 2024-04-12 |
| CA595L0A (Edn 1.000) | CA595L0A | 1:11 000 | 2024-04-05 |
| New Editions | | | |
| CA44UN4A (Edn 2.000) | Transit4800N07100W | 1:11 000 | 2024-04-05 |
| CA44UNEA (Edn 2.000) | Transit4800N07000W | 1:22 500 | 2024-04-05 |
| CA46CRFA (Edn 2.000) | CA46CRFA | 1:45 000 | 2024-04-05 |
| CA46CRRA (Edn 2.000) | CA46CRRA | 1:45 000 | 2024-04-19 |
| CA46NRRA (Edn 2.000) | CA46NRRA | 1:45 000 | 2024-04-19 |
| CA471221 (Edn 2.000) | CA471221 | 1:22 500 | 2024-04-12 |
| CA54VNGA (Edn 2.000) | Port4810N06980W | 1:2 000 | 2024-04-05 |
| CA553Q2A (Edn 2.000) | Port4880N06460W | 1:4 000 | 2024-04-05 |
| CA553Q3A (Edn 2.000) | Port4880N06450W | 1:4 000 | 2024-04-05 |
| CA553Q4A (Edn 2.000) | Port4880N06440W | 1:4 000 | 2024-04-05 |
| CA571157 (Edn 2.000) | Windy Bay | 1:11 000 | 2024-04-12 |
| CA576003 (Edn 14.000) | Halifax Harbour - Point Pleasant to/à Bedford Basin | 1:5 000 | 2024-04-26 |
| Charts Permanently Withdrawn | | | |
| CA573372 | Ivujivik | | |
| CA573374 | Akulivik | Cancelled by CA58QKXA,CA58QKWA,CA58PKXA | |

***404/24 Canadian Hydrographic Service – Raster Digital Charts (BSB V3)**

| Charts | Main Title | Scale | Edition Date | Published |
|-------------------------------------|------------|-------|--------------|-----------|
| Charts Permanently Withdrawn | | | | |
| RM-3859 | Tasu Sound | | | |

***405/24 Transport Canada - Ship Safety Bulletin #09 and #10/2024**

New **Ship Safety Bulletins** have recently been posted on the [Transport Canada website](#).

To view or download these bulletins, please click on the links below:

[SSB#09/2024](#) – New and existing insurance requirements for some vessels
RDIMS# 20166820

[SSB#10/2024](#) – Protecting the North Atlantic right whale: Speed restriction measures in the Gulf of St. Lawrence
RDIMS# 18265176

Sign up for [e-Bulletin](#) to receive an e-mail notice each time a new Ship Safety Bulletin is published on our website.

Contact us at marinesafety-securitemaritime@tc.gc.ca or 1-855-859-3123 (Toll Free).

***408/24 Canadian Coast Guard Publication - Amendments to the *Notices to Mariners Annual Edition 2024* - Section E, Notice 31: Reporting Marine Occurrences**

Page 1:

AMEND AS FOLLOWS:

| Location | Address | Phone | Facsimile | E-mail |
|-----------------|---|--------------|--------------|--|
| Atlantic Region | 150 Thorne Avenue Dartmouth, NS, B3B 1Z2 | 902-471-0820 | 819-997-2239 | MarineNotifications.Atlantic@tsb-bst.gc.ca |
| Central Region | 2575 Ste-Anne Boulevard, Suite 220, Québec, QC, G1J 0G7 | 418-580-3510 | 819-997-2239 | MarineNotifications.Central@tsb-bst.gc.ca |
| Pacific Region | # 4 - 3071 Number Five Road Richmond, BC, V6X 2T4 | 604-219-2414 | 819-997-2239 | MarineNotifications.Pacific@tsb-bst.gc.ca |

***409/24 Canadian Hydrographic Service – Chart 3811 Permanently Withdrawn**

Chart 3811, Harbours in Queen Charlotte Islands/Havres dans Îles de la Reine-Charlotte, has been permanently cancelled.

Section 1A: Temporary and Preliminary Notices

Reminder – Comment Period for Active Preliminary Notices

No notices applicable for this edition.

Inland Waters

Temporary Notices

No notices applicable for this edition.

Preliminary Notices

No notices applicable for this edition.

Pacific Coast

Temporary Notices

No notices applicable for this edition.

Preliminary Notices

No notices applicable for this edition.

Section 2: Chart Corrections

3000 - Juan de Fuca Strait to/à Dixon Entrance - New Edition - 20-JAN-1989 - NAD 1927

12-APR-2024

LNMD. 16-FEB-2024

Affix Patch 50°00'00.0"N 124°00'00.0"W
Download Patch - https://www.notmar.gc.ca/chsftp/patches/3000_6204908_1_202403141125.pdf
DFO(6204908-01)

3001 - Vancouver Island / Île de Vancouver, Juan de Fuca Strait to/à Queen Charlotte Sound - New Edition - 23-FEB-2001 - NAD 1927

12-APR-2024

LNMD. 16-FEB-2024

Affix Patch 50°00'00.0"N 124°00'00.0"W
Download Patch - https://www.notmar.gc.ca/chsftp/patches/3001_6204908_1_202403141354.pdf
DFO(6204908-01)

3441 - Haro Strait, Boundary Pass and/et Satellite Channel - New Edition - 01-JUL-2005 - NAD 1983

05-APR-2024

LNMD. 23-FEB-2024

Add subsurface Ocean Data Acquisition System ODAS with known depth of 192 metres (See Chart 1, L25) 48°45'39.0"N 123°03'39.9"W
DFO(6204911-01)

Add subsurface Ocean Data Acquisition System ODAS with known depth of 192 metres (See Chart 1, L25) 48°45'33.4"N 123°03'51.7"W
DFO(6204911-02)

Delete pontoon (See Chart 1, F16) joining 48°39'01.3"N 123°33'08.1"W
48°39'01.3"N 123°33'08.4"W
and 48°38'59.5"N 123°33'08.4"W
DFO(6204912-01)

Delete pontoon (See Chart 1, F16) between 48°38'59.5"N 123°33'06.0"W
and 48°39'01.7"N 123°33'06.2"W
DFO(6204912-02)

Delete pontoon (See Chart 1, F16) between 48°38'59.6"N 123°33'02.4"W
and 48°39'02.0"N 123°33'02.5"W
DFO(6204912-03)

Add pontoon (See Chart 1, F16) joining 48°38'59.4"N 123°33'02.4"W
48°38'59.4"N 123°33'00.7"W
and 48°39'01.8"N 123°33'00.7"W
DFO(6204912-04)

Delete private light F Y (See Chart 1, P1) 48°44'59.4"N 123°37'26.6"W
DFO(6204914-01)

Delete private light F G (See Chart 1, P1) 48°44'59.4"N 123°37'25.7"W
DFO(6204914-02)

Delete private light F R (See Chart 1, P1) 48°44'48.4"N 123°37'25.4"W
DFO(6204914-03)

Notices to Mariners – Monthly Western Edition
Section 2: Chart Corrections

| | | |
|-------------|---|---|
| Delete | private light F (See Chart 1, P1) | 48°44'45.0"N 123°37'25.2"W <i>DFO(6204914-04)</i> |
| 12-APR-2024 | | LNMD. 05-APR-2024 |
| Delete | radar reflector (See Chart 1, S4) | 48°40'43.2"N 123°23'29.5"W <i>(P2023115) LL(236) DFO(6204844-01)</i> |
| Delete | radar reflector (See Chart 1, S4) | 48°39'18.0"N 123°19'24.0"W <i>(P2023114) LL(225.4) DFO(6204845-01)</i> |
| Add | radar reflector (See Chart 1, S4) | 48°42'36.9"N 123°25'54.8"W <i>(P2023099) LL(248.3) DFO(6204867-01)</i> |
| Reposition | light FI G | from 48°41'14.6"N 123°29'22.8"W to 48°41'13.8"N 123°29'22.6"W <i>(P2024001) LL(248.6) DFO(6204872-01)</i> |
| Add | radar reflector (See Chart 1, S4) | 48°41'13.8"N 123°29'22.6"W <i>DFO(6204872-02)</i> |
| Delete | radar reflector (See Chart 1, S4) | 48°41'28.1"N 123°23'17.3"W <i>(P2023095) LL(238) DFO(6204873-01)</i> |
| Add | radar reflector (See Chart 1, S4) | 48°42'04.3"N 123°24'18.3"W <i>(P2023097) LL(246) DFO(6204874-01)</i> |
| Delete | radar reflector (See Chart 1, S4) | 48°43'33.5"N 123°23'12.9"W <i>(P2023096) LL(241) DFO(6204875-01)</i> |
| Reposition | green port hand can buoy, marked 1 (See Chart 1, Qc) | from 48°34'44.1"N 123°10'50.0"W to 48°34'45.2"N 123°10'46.7"W <i>DFO(6204922-02)</i> |

3462 - Juan de Fuca Strait to Strait of Georgia - New Edition - 01-JUL-2005 - NAD 1983

| | | |
|-------------|--------------------------------------|---|
| 12-APR-2024 | | LNMD. 16-FEB-2024 |
| Delete | radar reflector (See Chart 1, S4) | 48°39'18.0"N 123°19'24.0"W <i>(P2023114) LL(225.4) DFO(6204845-01)</i> |
| Add | radar reflector (See Chart 1, S4) | 48°42'36.9"N 123°25'54.8"W <i>(P2023099) LL(248.3) DFO(6204867-01)</i> |
| Add | radar reflector (See Chart 1, S4) | 48°41'14.5"N 123°29'21.9"W <i>DFO(6204872-02)</i> |
| Delete | radar reflector (See Chart 1, S4) | 48°43'33.5"N 123°23'12.9"W <i>(P2023096) LL(241) DFO(6204875-01)</i> |

| | | |
|--------|--|---|
| Delete | radar transponder beacon (See Chart 1, S3.1) | 48°40'33.7"N 122°42'48.4"W DFO(6204915-01) |
| Delete | black spherical topmarks against buoy (See Chart 1, Q9) | 48°32'56.4"N 122°59'22.3"W DFO(6204922-01) |
| Delete | radar transponder beacon against buoy (See Chart 1, S3.1) | 48°45'18.5"N 122°46'30.5"W DFO(6204922-03) |

3479 - Approaches to/Approches à Sidney - New Chart - 18-MAY-2007 - NAD 1983
12-APR-2024

LNMD. 09-FEB-2024

| | | |
|------------|--------------------------------------|---|
| Delete | radar reflector (See Chart 1, S4) | 48°40'43.0"N 123°23'29.5"W (P2023115) LL(236) DFO(6204844-01) |
| Delete | radar reflector (See Chart 1, S4) | 48°39'17.8"N 123°19'24.0"W (P2023114) LL(225.4) DFO(6204845-01) |
| Add | radar reflector (See Chart 1, S4) | 48°42'36.9"N 123°25'54.8"W (P2023099) LL(248.3) DFO(6204867-01) |
| Delete | radar reflector (See Chart 1, S4) | 48°41'28.2"N 123°23'17.2"W (P2023095) LL(238) DFO(6204873-01) |
| Reposition | light FI G (See Chart 1, P1) | from 48°41'28.1"N 123°23'17.3"W to 48°41'28.3"N 123°23'17.6"W DFO(6204873-02) |
| Add | radar reflector (See Chart 1, S4) | 48°42'04.3"N 123°24'18.3"W (P2023097) LL(246) DFO(6204874-01) |
| Delete | radar reflector (See Chart 1, S4) | 48°43'33.5"N 123°23'12.9"W (P2023096) LL(241) DFO(6204875-01) |

3479 - Iroquois Passage and/et John Passage - New Chart - 18-MAY-2007 - NAD 1983
12-APR-2024

LNMD. 09-FEB-2024

| | | |
|------------|--------------------------------------|---|
| Delete | radar reflector (See Chart 1, S4) | 48°40'43.0"N 123°23'29.5"W (P2023115) LL(236) DFO(6204844-01) |
| Delete | radar reflector (See Chart 1, S4) | 48°41'28.1"N 123°23'17.3"W (P2023095) LL(238) DFO(6204873-01) |
| Reposition | light FI G (See Chart 1, P1) | from 48°41'28.1"N 123°23'17.3"W to 48°41'28.3"N 123°23'17.6"W DFO(6204873-02) |

3488 - Crescent Island to/à Strawberry Island - Sheet/Feuille 1 - New Chart - 21-OCT-1994 - NAD 1983

12-APR-2024

LNM/D. 19-JUN-2009

| | | |
|--------|--|--|
| Add | depth of 4.2 metres (See Chart 1, I10) | 49°08'19.8"N 122°14'29.0"W <i>DFO(6204904-01)</i> |
| Add | depth of 2.7 metres (See Chart 1, I10) | 49°08'31.5"N 122°14'53.3"W <i>DFO(6204904-02)</i> |
| Add | depth of 2.2 metres (See Chart 1, I10) | 49°08'37.2"N 122°15'07.0"W <i>DFO(6204904-03)</i> |
| Add | depth of 1.9 metres (See Chart 1, I10) | 49°08'41.9"N 122°15'21.4"W <i>DFO(6204904-04)</i> |
| Delete | depth of 18.3 metres (See Chart 1, I10) | 49°08'45.9"N 122°15'26.9"W <i>DFO(6204904-05)</i> |
| Add | depth of 2.1 metres (See Chart 1, I10) | 49°08'44.6"N 122°15'25.0"W <i>DFO(6204904-06)</i> |
| Delete | depth of 23.4 metres (See Chart 1, I10) | 49°08'45.0"N 122°15'36.5"W <i>DFO(6204904-07)</i> |
| Add | depth of 3.1 metres (See Chart 1, I10) | 49°08'45.8"N 122°15'34.4"W <i>DFO(6204904-08)</i> |
| Add | depth of 3.1 metres (See Chart 1, I10) | 49°08'45.8"N 122°15'40.0"W <i>DFO(6204904-09)</i> |

3489 - Barnston Island to/à Crescent Island - Sheet/Feuille 2 - New Chart - 21-OCT-1994 - NAD 1983

12-APR-2024

LNM/D. 15-OCT-2021

| | | |
|--------|---|--|
| Delete | depth of 3.6 metres (See Chart 1, I10) | 49°10'30.9"N 122°32'58.5"W <i>DFO(6204905-01)</i> |
| Add | depth of 1.9 metres (See Chart 1, I10) | 49°10'31.5"N 122°32'58.5"W <i>DFO(6204905-02)</i> |
| Add | depth of 1.1 metres (See Chart 1, I10) | 49°10'32.8"N 122°33'02.8"W <i>DFO(6204905-03)</i> |
| Add | depth of 2.0 metres (See Chart 1, I10) | 49°10'33.7"N 122°33'05.5"W <i>DFO(6204905-04)</i> |
| Delete | depth of 4.8 metres (See Chart 1, I10) | 49°11'22.8"N 122°40'18.4"W <i>DFO(6204924-01)</i> |

Add wreck WK with known depth of 3.4 metres
(See Chart 1, K26) 49°11'23.3"N 122°40'18.5"W
DFO(6204924-02)

3493 - Vancouver Harbour Western Portion/Partie Ouest - New Edition - 15-NOV-2019 - World Geodetic System 1984
12-APR-2024 LNM/D. 02-FEB-2024

Delete pipeline between 49°18'15.2"N 123°07'47.4"W
(See Chart 1, L41.1) and 49°18'18.4"N 123°07'45.7"W
This notice affects Electronic Navigational Chart: CA570073
DFO(6204921-01)

Add pipeline joining 49°18'15.2"N 123°07'47.4"W
(See Chart 1, L41.1) 49°18'16.3"N 123°07'46.7"W
49°18'18.1"N 123°07'46.5"W
49°18'21.2"N 123°07'43.0"W
and 49°18'21.8"N 123°07'42.9"W
This notice affects Electronic Navigational Chart: CA570073
DFO(6204921-02)

3512 - Strait of Georgia, Central Portion/Partie Centrale - New Edition - 25-DEC-1998 - NAD 1983
12-APR-2024 LNM/D. 22-DEC-2023

Affix patch 49°38'00.0"N 124°03'00.0"W
Download Patch - https://www.notmar.gc.ca/chsftp/patches/3512_6204908_5_202403141128.pdf
This notice affects Electronic Navigational Chart: CA570544
DFO(6204908-05)

3514 - Jervis Inlet - New Edition - 02-AUG-1996 - NAD 1983
12-APR-2024 LNM/D. 27-OCT-2023

Replace DESERTED BAY with ts'unay 50°05'31.4"N 123°45'15.0"W
DFO(6204908-02)

Affix patch 49°45'00.0"N 124°00'00.0"W
Download Patch - https://www.notmar.gc.ca/chsftp/patches/3514_6204908_4_202403141125.pdf
This notice affects Electronic Navigational Chart: CA470095
DFO(6204908-04)

3535 - Pender Harbour - New Edition - 08-MAR-2019 - World Geodetic System 1984
12-APR-2024 LNM/D. 06-OCT-2023

Add harbour limit and legend PENDER between 49°36'14.0"N 124°03'34.0"W
(See Chart 1, N49) and 49°37'43.4"N 124°04'56.0"W
DFO(6204908-03)

Affix patch 49°38'00.0"N 124°03'00.0"W
Download Patch - https://www.notmar.gc.ca/chsftp/patches/3535_6204908_5_202403141128.pdf
This notice affects Electronic Navigational Chart: CA570544
DFO(6204908-05)

Add harbour limit between 49°37'56.0"N 124°04'54.0"W
(See Chart 1, N49) and 49°38'14.0"N 124°04'21.0"W
This notice affects Electronic Navigational Chart: CA570544
DFO(6204908-06)

3548 - Queen Charlotte Strait, Central Portion/Partie Centrale - New Edition - 26-SEP-1997 - NAD 1983

05-APR-2024

LNM/D. 01-DEC-2023

Delete submarine cable (See Chart 1, L30.1) joining 50°46'30.5"N 127°26'52.0"W
50°47'15.7"N 127°25'49.7"W
50°47'53.5"N 127°25'40.7"W
50°48'24.8"N 127°25'50.8"W
and 50°51'05.5"N 127°30'00.0"W
DFO(6204913-01)

Add submarine cable (See Chart 1, L30.1) joining 50°47'29.3"N 127°30'00.0"W
50°47'27.2"N 127°29'46.6"W
50°46'43.4"N 127°26'54.5"W
50°46'38.9"N 127°26'50.3"W
50°46'35.1"N 127°26'50.0"W
and 50°46'30.5"N 127°26'52.0"W
DFO(6204913-03)

3549 - Queen Charlotte Strait Western Portion/Partie Ouest - New Chart - 03-DEC-1993 - NAD 1983

05-APR-2024

LNM/D. 20-OCT-2023

Delete submarine cable (See Chart 1, L30.1) between 50°46'30.5"N 127°26'52.0"W
and 50°46'46.6"N 127°26'30.0"W
DFO(6204913-01)

Delete submarine cable (See Chart 1, L30.1) joining 50°48'51.2"N 127°26'30.0"W
50°51'00.3"N 127°29'50.6"W
50°51'30.6"N 127°30'53.0"W
50°51'31.8"N 127°31'02.9"W
50°52'13.4"N 127°33'14.4"W
50°52'07.9"N 127°34'55.4"W
50°52'02.7"N 127°35'10.8"W
50°51'53.8"N 127°35'45.9"W
50°51'38.0"N 127°36'26.0"W
and 50°51'37.7"N 127°36'30.9"W
DFO(6204913-02)

Add submarine cable (See Chart 1, L30.1) joining 50°51'47.5"N 127°36'23.9"W
50°51'55.9"N 127°36'27.0"W
50°51'59.4"N 127°36'32.9"W
50°52'11.3"N 127°37'16.3"W
50°52'17.9"N 127°37'32.0"W
50°52'27.1"N 127°38'02.6"W
50°52'47.6"N 127°38'29.4"W
50°52'59.8"N 127°39'01.4"W
50°53'01.3"N 127°39'33.1"W
50°52'56.6"N 127°39'34.1"W
50°52'41.9"N 127°39'25.4"W
50°51'39.8"N 127°39'06.5"W
50°51'27.2"N 127°38'57.2"W
50°51'14.2"N 127°38'49.5"W
50°50'48.5"N 127°38'23.8"W
50°50'34.4"N 127°38'21.9"W
50°50'07.5"N 127°38'33.8"W
50°50'00.5"N 127°38'30.6"W
50°49'26.5"N 127°37'59.6"W
50°49'10.1"N 127°37'21.0"W
50°48'38.5"N 127°36'34.5"W
50°47'49.4"N 127°32'26.9"W
50°47'27.2"N 127°29'46.6"W
50°46'43.4"N 127°26'54.5"W
50°46'38.9"N 127°26'50.3"W
50°46'35.1"N 127°26'50.0"W
and 50°46'30.5"N 127°26'52.0"W
DFO(6204913-03)

3601 - Juan de Fuca Strait to/à Vancouver Harbour - New Edition - 01-JUL-2005 - NAD 1983

| | | |
|-------------|--|--|
| 12-APR-2024 | | LNМ/D. 05-JAN-2024 |
| Delete | radar transponder beacon (See Chart 1, S3.1) | 48°40'33.9"N 122°42'49.2"W <i>DFO(6204915-01)</i> |
| Delete | radar transponder beacon against buoy (See Chart 1, S3.1) | 48°45'18.5"N 122°46'30.5"W <i>DFO(6204922-03)</i> |

3744 - Queen Charlotte Sound - New Edition - 20-MAY-1988 - NAD 1927

| | | |
|-------------|---|--|
| 05-APR-2024 | | LNМ/D. 17-NOV-2023 |
| Delete | subsurface Ocean Data Acquisition System (ODAS) with known depth of 22 fathoms (See Chart 1, L25) | 53°06'29.5"N 130°22'52.8"W <i>DFO(6204895-01)</i> |

3902 - Hecate Strait - New Edition - 09-DEC-1988 - NAD 1927

| | | |
|-------------|---|--|
| 05-APR-2024 | | LNМ/D. 17-FEB-2023 |
| Delete | subsurface Ocean Data Acquisition System (ODAS) with known depth of 22 fathoms (See Chart 1, L25) | 53°06'29.6"N 130°22'52.8"W <i>DFO(6204895-01)</i> |
| Add | subsurface Ocean Data Acquisition System ODAS with known depth of 114 fathoms (See Chart 1, L25) | 52°15'00.8"N 129°40'54.3"W <i>DFO(6204910-01)</i> |

3935 - Hakai Passage and Vicinity/et Environs - New Chart - 28-JAN-2000 - NAD 1983

| | | |
|-------------|--|--|
| 05-APR-2024 | | LNМ/D. 01-DEC-2023 |
| Delete | subsurface Ocean Data Acquisition System (ODAS) with known depth of 13 metres (See Chart 1, L25) | 51°42'43.2"N 128°14'09.6"W <i>DFO(6204896-01)</i> |

3957 - Approaches to/Approches à Prince Rupert Harbour - New Edition - 07-OCT-2016 - World Geodetic System 1984

| | | |
|-------------|---|--|
| 05-APR-2024 | | LNМ/D. 22-JUL-2022 |
| Add | subsurface Ocean Data Acquisition System ODAS with known depth of 195 metres (See Chart 1, L25) | 54°15'48.0"N 130°46'42.0"W <i>DFO(6204903-01)</i> |
| Add | subsurface Ocean Data Acquisition System ODAS with known depth of 189 metres (See Chart 1, L25) | 54°15'16.7"N 130°45'26.6"W <i>DFO(6204907-01)</i> |

3981 - Laredo Channel and/et Laredo Inlet - New Chart - 19-APR-2013 - NAD 1983

| | | |
|-------------|---|--|
| 05-APR-2024 | | LNМ/D. 30-MAR-2018 |
| Add | subsurface Ocean Data Acquisition System ODAS with known depth of 146 metres (See Chart 1, L25) | 52°44'36.0"N 129°06'02.6"W <i>DFO(6204909-01)</i> |

Section 3: Radio Aids to Marine Navigation Corrections

***415/24 Radio Aids to Marine Navigation 2024 (Atlantic, St. Lawrence, Great Lakes, Lake Winnipeg, Arctic and Pacific)**

Page 2-64

AMEND AS FOLLOWS:

Table 2-31 - Radar Beacons Located in Newfoundland

| Name and Location | Identifier | Remarks |
|--|--------------|--|
| ... | ... | ... |
| Grappling Island Light 54°27'22.2"N 54°27'22.5"N 056°52'52.3"W 056°52'51.5"W | ---• (G) | Navigation season only. |
| Hens and Chickens 56°30'39.5"N 060°38'37.5"W | •--- (W) | Open year round. |
| Negro Island Light 56°21'05.8"N 060°32'40.8"W | ---•• (Z) | Open year round. |
| Quaker Hat 54°44'12.5"N 057°20'37.7"W | ---•- (Q) | Open year round. Navigation season only. |
| White Bear Island (Nanuaktok) 55°26'00.7"N 059°30'40.9"W | -• (N) | Navigation season only. |

Page 2-72 to 2-73

AMEND AS FOLLOWS:

Table 2-39 - Radar Beacons Located in Yukon

| Name and Location | Identifier | Remarks |
|---|--------------|-------------------------|
| Calton Point 69°30'09"N 69°30'08"N 139°06'30"W 139°06'40"W (NAD27) | ---• (G) | Navigation season only. |
| Collinson Head 69°34'30"N 138°51'34"W 138°51'41"W (NAD27) | -• (N) | Navigation season only. |
| Kay Point 69°17'26"N 69°17'25"N 138°22'42"W 138°22'52"W (NAD27) | -•- (K) | Navigation season only. |
| Shingle Point 69°00'30"N 69°00'29"N 137°34'12"W 137°34'22"W | -•--- (Y) | Navigation season only. |

Table 2-41 - Radar Beacons Located in Northwest Territories

| Name and Location | Identifier | Remarks |
|---|-------------|-------------------------|
| Atkinson Point 69°56'46.7"N 131°26'59.3"W | —•— (Y) | Navigation season only. |
| Baillie Islands 70°37'38.7"N 128°15'24.8"W | —•— (K) | Navigation season only. |
| Cape Dalhousie 70°16'05"N 129°42'36"W 129°42'45"W (NAD27) | —••• (Z) | Navigation season only. |
| Hardisty Island 61°43'52.6"N 114°35'00.2"W | —•• (G) | Navigation season only. |
| Pelly Island 69°37'26.2"N 135°29'15.7"W | —•— (Y) | Navigation season only. |
| Pilot Islands 62°13'04"N 114°06'49.3"W | —••• (C) | Navigation season only. |
| Pitt Island 69°09'15"N 136°10'30"W 136°10'40"W | —•— (K) | Navigation season only. |
| Pullen Island 69°46'24.4"N5 134°24'04.2"W | —•• (G) | Navigation season only. |
| Relief Islet 70°08'45"N 130°49'30"W 130°49'40"W (NAD27) | —•• (G) | Navigation season only. |
| Tuktoyaktuk Island 69°27'21.2"N 132°59'58.8"W | —••• (C) | Navigation season only. |
| Warren Point 69°45'00"N 132°21'30"W | —••• (C) | Navigation season only. |

Page 2-73 to 2-74

AMEND AS FOLLOWS:

Table 2-42 - Radar Beacons Located in Nunavut

| Name and Location | Identifier | Remarks |
|---|----------------|-------------------------|
| Beacon Island 58°54'07.9"N 066°20'30.3"W | — — • (G) | Navigation season only. |
| Broomfield Island 55°40'24"N 55°40'25"N 079°14'18"W 079°14'17"W (NAD27) | — • (N) | Navigation season only. |
| Cache Point 68°39'26.2"N 113°25'11.7"W | — — • (G) | Navigation season only. |
| Cape Bexley 69°00'47"N 115°55'24.1"W | — • — — (Y) | Navigation season only. |
| Coats Island 62°10'20"N 62°10'25.7"N 083°08'00"W 083°07'42.2"W (NAD27) | — • — • (C) | Navigation season only. |
| Delta Island 68°35'15.3"N 100°01'51.9"W | — — • (G) | Navigation season only. |
| Kitdliat Island 59°58'34.5"N 069°37'30.6"W | — • — (K) | Navigation season only. |
| Mansel Island 62°25'00"N 62°24'52.2"N 079°36'30"W 079°36'18.3"W (NAD27) | — • — (K) | Navigation season only. |
| McClintock Point 69°18'34.2"N 099°53'48.9"W | — • — • (C) | Navigation season only. |
| Nipper Island 59°00'26.5"N 068°53'18.0"W | — — • (G) | Navigation season only. |
| Nordenskiold Islands 68°21'01.5"N 100°47'22.1"W | — • — (K) | Navigation season only. |
| Nottingham Island 63°05'10"N 63°05'35.5"N 077°57'00" 077°56'54.6"W (NAD27) | — • (N) | Navigation season only. |
| ... | ... | ... |

Table 2-43 - Radar Beacons Located in Nunavik

| Name and Location | Identifier | Remarks |
|--|----------------|-------------------------|
| Pointe Qirniraujaq 58°35'00.6"N 068°00'19.0"W | — • • — (X) | Navigation season only. |
| Puvirnituq 60°01'15.6"N 60°01'15.5"N 077°20'21.3"W | • — — • (P) | Navigation season only. |

Page 4-6

AMEND

4.1.2.2 The Alarm Signal

TO READ:

4.1.2.2 The Alarm Signal

The radiotelephony Audio Alarm Signal consists of a two tone audio transmission followed by a ten second continuous tone. The two tones are different pitches, similar to the sound of emergency vehicles, and the ten second continuous tone indicates that the transmission is from an MCTS Centre.

The Audio Alarm Signal is used to alert mariners that:

- a) A distress call or distress message is about to follow;
- b) There is a new warning pertaining to a dangerous weather phenomena (only the initial broadcast)
- c) A tsunami warning broadcast is about to follow (only the initial broadcast); or,
- d) There has been an observed or reports of a dangerous weather phenomena, such as a waterspout.

Page 4-63

AMEND

4.3.3 World-Wide Navigational Warning Service (WWNWS)

TO READ:

4.3.3 World-Wide Navigational Warning Service (WWNWS)

4.3.3.1 NAVAREAS XVII and XVIII: Navigational Warnings

The Canadian Coast Guard has assumed responsibility of NAVAREA coordination for NAVAREAs XVII and XVIII as part of the World-Wide Navigational Warning Service (WWNWS).

Under the WWNWS, navigational warnings containing urgent information relevant to safe navigation that are broadcast in accordance with the Chapter IV of the International Convention for the Safety of Life at Sea (SOLAS).

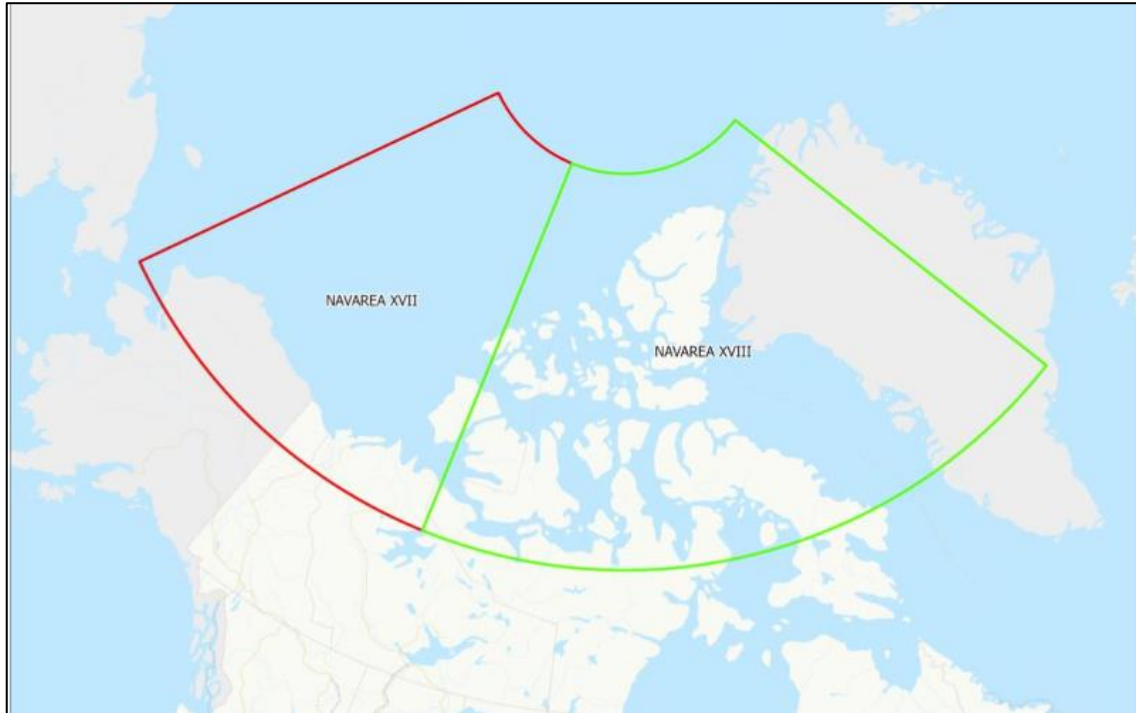
NAVAREA warnings, which contain information specific to ocean going mariners, remain in force until cancelled or promulgated by other means.

NAVAREA XVII and XVIII warnings that are less than 42 days old are promulgated via SafetyNET II and SafetyCast.

The complete text of all In-Force NAVAREA warnings is available from [the Canadian Coast Guard website](https://www.ccg.gc.ca).

Alternatively, these may be requested by forwarding an email to the NAVAREA Operations desk at: navarea17.18@innav.gc.ca.

Figure 4-13 - Canadian NAVAREA Zones and Broadcast Areas



The map portrayed in figure 4-13 is of Northern Canada. Shown are the zones for NAVAREA XVII in red and NAVAREA XVIII in green. These position limits are detailed in Table 4-14.

Table 4-14 – NAVAREA* Coordinates

| NAVAREA XVII | NAVAREA XVIII |
|----------------|----------------|
| 67°00N 168°58W | 67°00N 120°00W |
| 90°00N 168°58W | 90°00N 120°00W |
| 90°00N 120°00 | 90°00N 035°00W |
| 67°00N 120°00W | 67°00N 035°00W |

*The geographical sea area contained with these coordinates which may include inland seas, lakes and waterways navigable by sea-going ships

During the Arctic navigational season, NAVAREA XVII and XVIII warnings applicable to the Canadian Search and Rescue boundaries for waters North of 70 degrees latitude are broadcast from Iqaluit (with limits to coverage area and reliability) using High Frequency Narrow Band Direct Printing (HF NBDP) on 8416.5 kHz at 03:30 UTC and 15:30 UTC. Refer to [Iqaluit MCTS in Part 2](#) for details about the broadcast content.,

Table 4-15 - Broadcast Schedule

| Hour UTC | Service | Frequency, Satellite, or System |
|----------|-----------|---------------------------------|
| 0330 | HF NBDP | 8416.5 kHz* |
| 1100 | NAV XVIII | AOR-E, AOR-W SafetyCast |
| 1130 | NAV XVII | AOR-W, POR, SafetyCast |
| 1530 | HF NBDP | 8416.5 kHz* |
| 2300 | NAV XVIII | AOR-E, AOR-W, SafetyCast |
| 2330 | NAV XVII | AOR-W, POR, SafetyCast |

*Available during Arctic navigational season

Comments concerning the reception of NAVAREA XVII and XVIII broadcasts, especially above 75°N, would be appreciated and should be sent to:

NAVAREA XVII and XVIII

Prescott MCTS Centre

Telephone: 613-925-0666

Facsimile: 613-925-4519

E-mail: navarea17.18@innav.gc.ca

Page 4-64

AMEND

4.3.3.1.1 SafetyNET

TO READ:

4.3.3.1.1 Inmarsat C- SafetyNET II

NAVAREAs XVII and XVIII warnings are broadcast in the English language directly into the appropriate GMDSS NAVAREA zone, with a broadcast overlap of 300 NM.

To learn more about the [Inmarsat SafetyNET service](#), please consult their website or the SafetyNET manual (MSC.1/Circ.1364/Rev.2).

ADD AS FOLLOWS:

4.3.3.1.2 Iridium - SafetyCast

Section 4: Canadian Sailing Directions Corrections

The following **Canadian Sailing Directions** volumes have recently been updated on the [Canadian Hydrographic Service website](#).

| No. | Title |
|-----------------------|---|
| Atlantic Coast | |
| ATL105 | Cape Canso to Cape Sable (including Sable Island) |

Each volume includes a section entitled “Record of Changes” which lists all updates that are incorporated during the current calendar year.

Section 5: List of Lights, Buoys and Fog Signals Corrections

The amendments are highlighted and deletions are crossed out. For general and region-specific information on the List of Lights, click on the following links: [Newfoundland and Labrador Coast](#), [Atlantic Coast](#), [Inland Waters](#) and [Pacific Coast](#).

| No. | Name | Position ----- Latitude N. Longitude W. | Light Characteristics | Focal Height in m. above water | Nomi- nal Range | Description ----- Height in meters above ground | Remarks ----- Fog Signals |
|-----|------|--|--------------------------|--|-----------------------|--|---------------------------------|
|-----|------|--|--------------------------|--|-----------------------|--|---------------------------------|

PACIFIC COAST

WEST COAST, VANCOUVER ISLAND (LL 66 – 179.1)

| | | | | | | | |
|------|--|--|-------------|-------|-------|---------------------------------|--|
| 87.5 | South Brooks ODAS light buoy 46132 | W. of Kyuquot Sound. 49 46 15.6 127 52 56.0 | Fl(5) Y 20s | | | Yellow ODAS, marked "46132". | Year round. Chart:3604 Edn 04/24 (P24-015) |
|------|--|--|-------------|-------|-------|---------------------------------|--|

HOWE SOUND (LL 417 – 432)

| | | | | | | | |
|-------------------|----------------------------|--------------------------------|-----------|-----|----|--|---|
| 427.1 G5423.75 | Squamish Terminal range | 49 41 12.1 123 10 22.6 | F Y | 4.9 | 10 | Square skeleton tower, white daymark with red vertical stripe. | Operates 24 h. Year round. |
| 427.2 G5423.76 | | 019°30' 122.2 m from front. | F Y | 9.8 | 10 | 3-pile dolphin, white daymark with red vertical stripe. | Operates 24 h. Year round. Chart:3534 Edn 04/24 (P24-020, 021) |

VANCOUVER ISLAND (LL 433 – 447.2)

| | | | | | | | |
|-------|----------------------------------|---|--------|-------|-------|-------------------|--|
| 435.2 | Forwood Channel light buoy P0 | SW. of Entrance Island. 49 12 21.9 123 48 52.1 | Q R 1s | | | Red, marked "P0". | Year round. Chart:3458 Edn 04/24 (P24-019) |
|-------|----------------------------------|---|--------|-------|-------|-------------------|--|

BROUGHTON STRAIT (LL 545 – 553.5)

| | | | | | | | |
|----------------|-------------------|---|--------|-----|---|---|--|
| 550.5 G5625 | Haddington Island | N. side of island. 50 36 18.1 127 01 16.4 | Q G 1s | 7.6 | 5 | Square skeleton tower, green and white rectangular daymark. | Radar reflector. Year round. Chart:3546 Edn 04/24 (P24-018) |
|----------------|-------------------|---|--------|-----|---|---|--|

QUEEN CHARLOTTE SOUND (LL 569.2 – 586)

| | | | | | | | |
|-------|--|--|-------------|-------|-------|---------------------------------|---|
| 582.5 | West Sea Otter ODAS light buoy 46204 | Off Calvert Island. 51 24 14.2 128 41 06.3 | Fl(5) Y 20s | | | Yellow ODAS, marked "46204". | Year round. Position in NAD 83. Chart:3744 Edn 04/24 (P24-007) |
|-------|--|--|-------------|-------|-------|---------------------------------|---|