



Fisheries and Oceans  
Canada

Pêches et Océans  
Canada

Canadian  
Coast Guard

Garde côtière  
canadienne

# NOTICES TO MARINERS MONTHLY SUMMARY OF (T) AND (P) NOTICES

MONTHLY EDITION N°06  
June 26, 2020



Safety First, Service Always

**CANADIAN COAST GUARD**  
[www.notmar.gc.ca](http://www.notmar.gc.ca)

Notices to Mariners  
Monthly Summary of (T) and (P) Notices  
Monthly Edition N°06/2020

**Published under the authority of:**  
Canadian Coast Guard Programs  
Aids to Navigation and Waterways  
Fisheries and Oceans Canada  
Montreal, Quebec  
H2Y 2E7

© Her Majesty the Queen in Right of Canada, 2020  
Fs151-19E-PDF  
ISSN 2561-5106

Available on the Notices to Mariners website:  
[www.notmar.gc.ca](http://www.notmar.gc.ca)

Disponible en français :  
Avis aux navigateurs  
Sommaire mensuel des avis (T) et (P)  
Édition mensuelle N°06/2020

**NOTICES TO MARINERS  
MONTHLY REPRINT OF TEMPORARY AND PRELIMINARY NOTICES  
IN EFFECT AS OF JUNE 26, 2020**

**Geographical positions** refer directly to the graduations of the largest scale Canadian Hydrographic Service chart, unless otherwise indicated.

**Bearings** refer to the true compass and are measured clockwise from 000° (North) clockwise to 359°; those relating to lights are from seaward.

**Visibility** of lights is that in clear weather.

**Depths** - The units used for soundings (metres, fathoms or feet) are stated in the title of each chart.

**Elevations** are normally given above Higher High Water, Large Tides unless otherwise indicated.

**EXPLANATION OF TEMPORARY AND PRELIMINARY NOTICES TO MARINERS**

Certain Notices to Mariners appearing in the monthly editions have a (T) or (P) appended to the regular number. These letters indicate that the information contained in the notice is of a temporary or preliminary nature, respectively.

**TEMPORARY (T) NOTICES**

If a temporary change in conditions affecting navigation exists and if the change will be effective for a period of over three months, a temporary (T) notice will be published. Temporary changes which are effective for periods of less than three months will not normally be published (unless it is of exceptional interest). Otherwise, information will be promulgated as a Navigational Warning (NAVWARN) by the Canadian Coast Guard Marine Communications and Traffic Services (MCTS) Centre(s) in the affected area. (T) notices will be cancelled as necessary.

Please note that (T) notices with an end date will be automatically cancelled once the end date has passed. In the event of a change to these notices, a new Notice to Mariners will be issued.

**PRELIMINARY (P) NOTICES**

- a. When important changes affecting navigation are to take place in the near future, a Notice to Mariners describing the change will be published, so that mariners will have advance information on the change. Such notices will be designated (P).
- b. When a change in conditions affecting navigation has taken place but full information is not available, a preliminary (P) notice giving available information will be published. This notice will be followed by a regular notice when complete information becomes available. The regular notice will cancel the (P) notice.
- c. When a change has taken place which is too complex to describe in a written notice, a (P) notice giving general information will be published. This notice will explain that follow up action will be taken to update charts by publishing patch corrections, new editions or new charts.

Please note that following the expiry of the 90-day comment or objection period, (P) notices describing proposed changes or intention to discontinue will be automatically cancelled. In the event of a change to these notices, a new Notice to Mariners will be issued.

**ACTION REQUIRED ON RECEIPT OF (T) & (P) NOTICES**

It is not customary to make permanent corrections to charts and publications from (T) & (P) notices. On receipt of such notices, the information they contain should be noted in pencil on the affected charts and/or publications.

**CAUTION**

Mariners are reminded that charts and publications are not corrected from (T) & (P) notices when purchased from suppliers. For the list of charts affected by (T) & (P) notices, please refer to the index on page ii of this publication.

**INDEX OF (T) & (P) NOTICES**

<b>Notice #</b>	<b>Page</b>	<b>Notice #</b>	<b>Page</b>	<b>Notice #</b>	<b>Page</b>	<b>Notice #</b>	<b>Page</b>
616(T)/07	1	1218(T)/16	7	716(T)/19	10	415(P)/20	15
909(T)/14	2	1219(T)/16	7	816(T)/19	10	416(T)/20	15
1005(T)/15	3	108(T)/17	8	1117(T)/19	10	509(P)/20	16
1105(T)/15	3	309(T)/17	8	1118(T)/19	10	510(P)/20	16
515(T)/16	4	1205(T)/17	8	314(T)/20	11	511(P)/20	17
814(T)/16	4	1206(T)/17	8	411(P)/20	12	611(P)/20	17
818(T)/16	4	709(T)/18	9	412(P)/20	12, 13	612(P)/20	18
819(T)/16	5, 6	809(T)/18	9	413(P)/20	14	613(P)/20	18
1011(T)/16	7	417(T)/19	10	414(P)/20	14		

**INDEX OF CHARTS AFFECTED BY (T) & (P) NOTICES**

<b>Chart</b>	<b>Page</b>	<b>Chart</b>	<b>Page</b>	<b>Chart</b>	<b>Page</b>	<b>Chart</b>	<b>Page</b>
1203	16	2077	7	3515	16	4849	14
1430	10	2085	8, 10, 11	3564	17	4862	15
1553	17	2086	7	4117	15	4921	10
2017	2, 9	2123	8	4118	12	6022	8
2044	3	2181	8	4426	10	6108	18
2058	9	2235	4	4448	12, 13		
2060	4	2291	10	4839	18		
2067	7	2315	4	4847	14		

2007

**\*616(T) DEMARCATION BAY TO/À PHILIPS BAY – MOBILE OFFSHORE DRILLING UNIT TEMPORARILY ESTABLISHED**

The unmanned mobile offshore drilling unit “SDC” has been temporarily established at 69° 24.71'N 138° 53.76'W. The unit is marked with a light FI R, the structure is 202.4 metres long and 53 metres wide.

For information, contact Captain Connelly at 1-250-598-4513 or 1-250-744-9818 or e-mail [doncon@islandnet.com](mailto:doncon@islandnet.com)

(NOTSHIP H0212/06, Sarnia, June 2007)

2014

**\*909(T) KINGSTON HARBOUR AND APPROACHES/ET LES APPROCHES – DOCK UNSERVICEABLE**

Reference Chart: 2017

The Kingston psychiatric hospital dock is unserviceable and out of bounds for use as dockage until further notice.

(NOTSHIP C2409/10)

2015

**\*1005(T) PORT DALHOUSIE - EAST AND WEST PIERS – ACCESS FORBIDDEN**

Reference Chart: 2044

A recent engineering investigation identified structural issues and safety concerns with both the East and West piers at Port Dalhousie. In light of the inspection findings, the Department of Fisheries and Oceans is taking action to protect the safety of the public by prohibiting vessel, vehicular, and pedestrian access to the piers.

Vessels can still safely navigate the waters surrounding the piers, but will be unable to moor at the piers. The City of St. Catharines will accommodate boaters as possible at other local wharves.

Mark Sandeman  
Area Manager, Client Services  
Small Craft Harbours  
Central & Arctic Region  
Fisheries and Oceans Canada

3027 Harvester Road, Unit 310  
Burlington, ON L7N 3G7  
Telephone: (905) 639-2050  
Facsimile: (905) 639-5975  
Email: [mark.sandeman@dfo-mpo.gc.ca](mailto:mark.sandeman@dfo-mpo.gc.ca)

(NOTSHIP C567/15)

**\*1105(T) CANADA – SAFETY OF OFFSHORE EXPLORATION AND EXPLOITATION VESSELS**

Reference: Notice 410(T)/2007 is cancelled.

2015 Annual Edition of Notices to Mariners, Notice No. 20, pages A20-1 to A20-4.

Mariners are advised that offshore exploration and exploitation vessels may be conducting drilling operations in the following areas:

**Gulf of St. Lawrence**

NIL

**Mainland NWT**

NIL

**Mackenzie Delta NWT/Beaufort Sea**

NIL

**Arctic Islands of the NWT/Arctic Islands of Nunavut**

NIL

**Eastern Arctic Offshore**

NIL

**Davis Strait**

NIL

NOTE: Mariners are advised to obtain up-to-date position reports on drilling vessels and production installations before entering an area of exploration and exploitation. This information is available by contacting, as appropriate, ECAREG CANADA, NORDREG CANADA or CVTS OFFSHORE via any Marine Communications and Traffic Services Centre (MCTS).

(NOTSHIP M2215/15) (NEB)

2016

**\*515(T) HARBOURS ON THE EAST SHORE OF LAKE SUPERIOR/PORTS SUR LA RIVE EST DU LAC SUPÉRIEUR – BUOYS TEMPORARILY DISCONTINUED**

Reference Chart: 2315

The Canadian Coast Guard has temporarily discontinued the following aids to navigation:  
XT1, XT2, XT3, XT4, XT5, XT6, XT7, XT8, XT9, XT10, XT11, XT12.

(NOTSHIP C1045)

**\*814(T) MAIN DUCK ISLAND TO/À SCOTCH BONNET ISLAND – PARTIALLY SUBMERGED FIXED STEEL BARGES**

Reference Chart: 2060

There are 3 partially submerged fixed steel barges in North end of West Lake (43° 57' 02.3"N 077° 20' 12.8"W), which have been reported just below the water line.

Barges are marked with cautionary buoys.

(NOTSHIP C1641/14)

**\*818(T) CAPE HURD TO/À LONELY ISLAND – LIGHT CHARACTERISTICS TEMPORARILY CHANGED**

Reference Chart: 2235

The light characteristics of Cove Island (LL 805) (U.S. LL 12675) have temporarily changed to flash 1 second, eclipse 9 seconds and night-time operation only.

(NOTSHIP C2522/11)



2016

**\*819(T) AUTOMATIC IDENTIFICATION SYSTEM (AIS)**

**AIS Application-Specific Messages (ASM) and AIS AtoN**

Mariners are advised that the Canadian Coast Guard will perform a test of AIS Application-Specific Messages (AIS-ASM) on the Pacific Coast from the Sand Heads meteorological/hydrological station: 49°06'21"N 123°18'12"W, and may extend this testing to other stations in the coming months. The test will start at the end of August and consist of broadcasting meteorological/hydrological (MET/HYDRO) data through AIS binary "Message 8".

Although AIS was originally developed as a means for positive identification and tracking of ships, it includes functionalities to transmit binary messages such as MET/HYDRO information and other types of data. These additional functionalities of AIS may be useful to mariners to assist in onboard voyage planning.

Ships need to be equipped with a proper Class "A" AIS device for the accurate onboard display of AIS message. The IMO mandatory carriage requirement for the Class "A" AIS display<sup>1</sup> is the Minimum Keyboard Display (MKD) which displays the binary data in an alphanumeric form. However, as there is no current requirement for the MKD to be capable of decoding all AIS binary messages, the display and use of the ASM information may require additional hardware and/or software<sup>2</sup>.

**AIS Aids to Navigation (AtoN)**

The International Association of Marine Aids to Navigation and Lighthouse Authorities (IALA) defines an AtoN as:

*'a device or system external to vessels that is designed and operated to enhance the safe and efficient navigation of vessels and/or vessel traffic'.<sup>3</sup>*

The primary purpose of an AIS AtoN Station is to promote and enhance safety and efficiency of navigation by one or more of the following:

- Providing a positive and all-weather means of identification;
- Complementing existing services (e.g. RACONS) from AtoN;
- Transmitting accurate positions of floating AtoN;
- Indicating if a floating AtoN is off position (monitoring the status of an AtoN);
- Marking or delineating tracks, routes, areas, and limits;
- Marking offshore structures;
- Enable timely marking of new hazards (fixed or dynamic) using Virtual AIS AtoN.

The use of AIS within the marine aids to navigation service is accomplished by the broadcasting of the aids to navigation report message "Message 21".

An AIS AtoN can be implemented in three ways, Real, Synthetic, and Virtual.

- 1) Physical/real AIS AtoN: An AIS device which is physically located on the AtoN and transmits "Message 21".
- 2) Synthetic AIS AtoN: There are 2 types of Synthetic AIS AtoN – Monitored and Predicted.
  - a. Monitored: A "Message 21" is transmitted from a nearby AIS base station. The AtoN physically exists but there is no AIS device on it. A communication link is installed on the AtoN to allow the monitoring of its status.
  - b. Predicted: A "Message 21" is transmitted from a nearby AIS base station. The AtoN physically exists but there is neither an AIS device on it nor a communication link. Status and position of the AtoN cannot be monitored.
- 3) Virtual AIS AtoN: A "Message 21" is transmitted from a nearby AIS base station for an AtoN that does not physically exist. The "Message 21" will clearly identify this as a virtual AIS AtoN.

<sup>1</sup> Class A AIS units are those meeting the mandatory SOLAS carriage requirements (SOLAS Chapter V, Rule 19) for vessels over 300GRT. Class B AIS units are for use on craft that are not covered by the mandatory carriage requirements.

<sup>2</sup> IALA Guideline No. 1095 On Harmonised implementation of Application-Specific Messages (ASMs) Edition 1 May 2013.

<sup>3</sup> IALA Recommendation A-126 On The Use of the Automatic Identification System (AIS) in Marine Aids to Navigation Services Edition 1.5 June 2011 Edition 1; June 2004.

**2016**

**Displays and Symbology**

As the AIS information available to mariners will be dependent on their display system, **not all transmitted information may be displayed**. Mariners are encouraged to install systems that provide AIS overlay on either ECDIS or Radar, or both.

Of those vessels that are AIS equipped the various displays available can range from no display on some Class B units, through to the mandatory Class A MKD, and to a full ECDIS or Radar overlay. In the absence of an ECDIS or Radar overlay, mariners will not be able to fully utilize the AIS AtoN functionality. Also note that there is a variance in the information that can be displayed on ECDIS or Radar equipment by the different AIS manufacturers.

The symbology that may be displayed on nautical charts, display systems and the MKD is summarised below.

Nautical Charts

On nautical charts AIS AtoN are indicated by a magenta circle surrounding the existing AtoN symbol and an adjacent legend stating AIS. The font will be straight for fixed AtoN and italic for floating AtoN.



A physical AIS AtoN provided as an overlay on ECDIS, Radar or other display systems are indicated by a diamond shape with crossed lines at the reported position of the AtoN. A physical AIS AtoN that is off position will use the same symbol but in red. A virtual AIS AtoN is indicated by a dotted line diamond shape with the crossed lines at the reported position.

Physical AIS Aton



Physical AIS Aton  
off position



Virtual AIS Aton



Minimum Keyboard Display

The mandatory MKD is only required to display data in alphanumeric form. Some MKD are units supplemented by a small graphical display. Exact presentation will vary but this layout below would be typical of MKD displays.

Range	Bearing	Name
XX.XX	XXX.X	XXXXXXXXXX
XX.XX	XXX.X	XXXXXXXXXX
XX.XX	XXX.X	XXXXXXXXXX
<b>Latitude</b>		XXX XX.XXX
<b>Longitude</b>		XXX XX.XXX

Feedback on AIS-ASM

Mariners are requested to provide feedback on the AIS-ASM test bed to their applicable Regional MCTS Office.

Contact information can be found in the publication Radio Aids to Marine Navigation, Part 1.

2016

**\*1011(T) LAKE ONTARIO/LAC ONTARIO (WESTERN PORTION/PARTIE OUEST) – SILTING REPORTED**

Reference Chart: 2077

Silting reported in main entrance channel to Fifty Point Marina. Centre of channel depth reported to be 1.9 metres with shallower depths on the sides.

Mariners are requested to use caution in the area.

(NOTSHIP C2266/16)

**\*1218(T) HAMILTON HARBOUR – SILTING REPORTED**

Reference Chart: 2067

Silting reported along the North faces of Pier 11 and Pier 12:

Pier 11 North Face between positions 43° 16' 31"N 079° 50' 56"W and 43° 16' 29"N 079° 50' 49"W, and at position 43° 16' 28"N 079° 50' 42"W.

Pier 12 North Face between positions 43° 16' 27"N 079° 50' 39"W and 43° 16' 26"N 079° 50' 33"W.

Mariners are requested to use caution and reduce speed upon arrival and departure. Seaway draft will be affected when water level is less than 0.70 metres above chart datum in these areas.

(NOTSHIP C1831/13)

**\*1219(T) TORONTO TO/À HAMILTON – CONSTRUCTION OPERATIONS**

Reference Chart: 2086

Construction operations taking place from November 14, 2016 until approximately 2026 at Lakeview Water Treatment Plant between Marie Curtis Park and Serson Creek. A variety of equipment will be used to expand the land mass along the shoreline. Landfill and 3 islands will be lit and marked.

(NOTSHIP C2533/16)

2017

**\*108(T) HARBOURS IN LAKE ERIE/HAVRES DANS LE LAC ÉRIÉ – UNLIT BUOYS TEMPORARILY REPOSITIONED**

Reference Chart: 2181

The following unlit spar buoys have been temporarily repositioned due to silting:

ES2 (LL 7169) to position 42° 39' 10.0"N 081° 12' 32.0"W

ES3 (LL 7170) to position 42° 39' 15.4"N 081° 12' 40.7"W

ES4 (LL 7171) to position 42° 39' 16.8"N 081° 12' 37.7"W

The shallowest depth to 3.5M occurs between ES3 and ES4 with the deepest water off the red side of the channel. Mariners are requested to use caution in the area.

(B2017-003)

**\*309(T) PELEE PASSAGE TO/À LA DETROIT RIVER – LOW WATER LEVELS REPORTED**

Reference Chart: 2123

Low water levels have been reported from the south end of the entrance to Sturgeon Creek Harbour northward.

Annette Winter  
Project and Divestiture Officer  
Small Craft Harbours  
Fisheries and Oceans Canada

Canada Centre for Inland Waters (CCIW)  
867 Lakeshore Road  
Burlington, ON L7S 1A1  
Telephone: (905) 315-5286  
Email: [annette.winter@dfo-mpo.gc.ca](mailto:annette.winter@dfo-mpo.gc.ca)

(NOTSHIP C58/13)

**\*1205(T) TORONTO HARBOUR – BREAKWATER ENTRANCE TO MARINA CLOSED DUE TO THE COLLAPSE OF THE BREAKWATER**

Reference Chart: 2085

The breakwater entrance to the west of Ontario Place Marina has been closed due to the collapse of the breakwater.

Sub-surface hazards exist in the breakwater gap and on the inner and outer edge of the breakwater wall.

Green spar buoy BW1 has been removed, and 3 white and orange keep out markers have been placed in the breakwater entrance.

The outer edge of the breakwater wall is marked with 2 white and orange keep out markers.

The inner edge of the breakwater wall is marked with 3 white and orange keep out markers.

(NOTSHIP C79/13)

**\*1206(T) LAKE ROSSEAU AND/ET LAKE JOSEPH – UNLIT BUOY TEMPORARY ESTABLISHED**

Reference Chart: 6022

The following unlit buoy has been temporary established:

P3/1 (LL 9089.1) (45° 08' 09.0"N 079° 40' 36.0"W)

(D2017-006)

2018

**\*709(T) KINGSTON HARBOUR AND APPROACHES/ET LES APPROCHES – INFORMATION REGARDING MOORING AND ANCHORING**

Reference: Notice 309(T)/14 is cancelled.

Reference Chart: 2017

All mooring or anchoring within the public port of Kingston is prohibited outside of designated marina areas until further notice without authorization from the port official.

Inquiries are to be directed to Transport Canada at (416) 952-0475.

**\*809(T) COBOURG TO/À OSHAWA – DREDGING OPERATIONS**

Reference Chart: 2058

Dredging operations in Port Hope Harbour from August 3, 2018 until December 30, 2022. A wave attenuator will block the entrance to the western basin.

Mariners are requested to stay clear of the area.

(NOTSHIP C1951/18)

2019

**\*417(T) TORONTO HARBOUR – CONSTRUCTION OPERATIONS**

Reference Chart: 2085

Construction operations in position 43° 36' 46.84"N 079° 23' 27.99"W and marked by a line of yellow cautionary buoys from September 2018 to December 2020. Tug and barge operation will be placing stone in the water to 0.3 m above chart datum.

Vessels in the area are advised to keep clear of the operation and to contact David G on VHF channel 16 or at 416-938-9607.

**\*716(T) RIVIÈRE RISTIGOUCHE / RESTIGOUCHE RIVER – FEDERAL WHARF CLOSED TO NAVIGATION**

Reference Chart: 4426

The federal wharf at Miguasha is closed to navigation. For reasons of safety and because of the collapsing risk, it is not permitted to berth at the wharf or to come closer than 20 metres from these structures.

For more information, please contact the regional representative of port operations at Transport Canada, Quebec region, Mme Myriam Rouleau at 418-446-8402.

(NAVWARN NW-Q-0318-16)

**\*816(T) POINT CLARK TO/À SOUTHAMPTON – OBSTRUCTION BELOW THE SURFACE OF THE WATER REPORTED**

Reference Chart: 2291

A fixed concrete obstruction just below the surface of the water has been reported in the Saugeen River west of highway 21 at the following position: 44° 30' 01.7"N 081° 22' 07.7"W. Mariners are requested to use caution in the area.

(NAVWARN NW-C-2508-15)

**\*1117(T) LAC SAINT-LOUIS – SUBMERGED OBJECTS**

Reference Chart: 1430

Fifty-three anchorage blocks and chains reported on the seabed in the vicinity of the Beauharnois Marina in the following area:

Position

Pt 1: 45° 19' 02.4"N 073° 52' 34.0"W

Pt 2: 45° 19' 02.3"N 073° 52' 39.5"W

Pt 3: 45° 19' 07.3"N 073° 52' 39.7"W

Pt 4: 45° 19' 07.3"N 073° 52' 34.1"W

(NAVWARN NW-Q-1339-19)

**\*1118(T) PLANS, BAIE DES CHALEURS/CHALEUR BAY (CÔTE NORD/NORTH SHORE) – FEDERAL WHARF CLOSED TO NAVIGATION**

Reference Chart: 4921

The federal wharf at Chandler is closed to navigation. For safety reasons, it is not permitted to berth at the wharf.

For more information, please contact Jean-Guy Fullum, Harbour Master, at 418-680-3203.

(NAVWARN NW-Q-1580-16)

2020

**\*314(T) TORONTO HARBOUR – CONSTRUCTION OPERATIONS**

Reference: Notice 209(T)/20 is now cancelled.

Reference Chart: 2085

Construction is taking place at Ashbridge's Bay and consists of the construction of two breakwaters and of a landform. A variety of equipment will be used, including tug boats and barges. Temporary aids to navigation will be placed prior to and during construction. The operations are scheduled to take at the following positions:

**Breakwater construction operations**

43° 39' 20.7"N 079° 18' 48.1"W

Phase 1: 2020-04-01 through 2020-12-31

Phase 2: 2021-04-01 through 2021-12-31

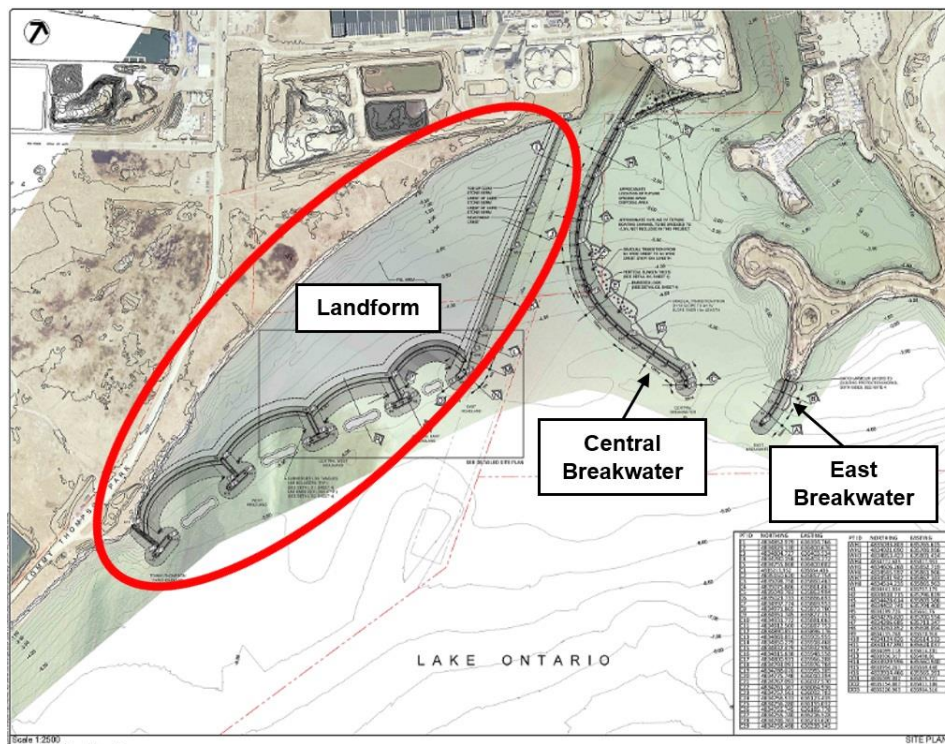
Phase 3: 2022-04-01 through 2022-12-31

**Landform construction operations**

43° 39' 01.4"N 079° 19' 01.9"W

Implementation of the shoreline infill area is expected to take approximately five years.

Mariners are requested to keep out of the construction zone.



2020

**\*411(P) ST. MARYS BAY – FOG SIGNALS TO BE DISCONTINUED**

Reference Chart: 4118

The Canadian Coast Guard proposes to permanently discontinue the fog signals on the following aids to navigation:

Boars Head	(LL 216)	(44° 24' 14.5"N 066° 12' 55.0"W):	The light and structure to remain.
Grand Passage	(LL 221)	(44° 17' 13.0"N 066° 20' 31.2"W):	The light and structure to remain.
Brier Island	(LL 223)	(44° 14' 55.0"N 066° 23' 32.0"W):	The light and structure to remain.
Peter Island	(LL 227)	(44° 15' 25.7"N 066° 20' 13.1"W):	The light and structure to remain.

Comments on this action are solicited from mariners and other interested parties by July 31, 2020, three months following the initial publication date of April 24, 2020. Following this date, this notice will be cancelled. Comments should be directed to the following:

Superintendent, Aids to Navigation  
Canadian Coast Guard  
P.O. Box 5667  
250 Southside Road  
St. John's, NL A1C 5X1  
Telephone: (902) 566-7936  
Email: [claire.maclaren@dfo-mpo.gc.ca](mailto:claire.maclaren@dfo-mpo.gc.ca)

Any objections raised must state the facts on which they are based and should include supporting information on safety, commerce and public benefit.

(F2020-013, 014, 015, 016)

**\*412(P) PORT HOOD AND/ET MABOU HARBOUR – NOTICE OF PROPOSED CHANGES**

Reference Chart: 4448

The Canadian Coast Guard proposes to permanently change the following aids to navigation:

Fixed Aids			
LL #	Aid Name	Position	Proposed Changes
876.8	Murphy Pond	46° 01' 33.3"N 061° 32' 39.7"W	Decrease lantern intensity.
876.9	Murphy Pond Breakwater	46° 01' 35.7"N 061° 32' 38.0"W	Decrease lantern intensity.
878.1	Port Hood Wharf	46° 01' 01.7"N 061° 32' 25.2"W	Discontinue aid.
879.1	Port Hood	46° 01' 29.4"N 061° 32' 20.5"W	Discontinue aid.



NOTICES TO MARINERS  
MONTHLY SUMMARY OF (T) AND (P) NOTICES  
EDITION 06/2020

2020

Floating Aids			
LL #	Aid Name	Position	Proposed Changes
876.5	Port Hood light buoy VX	46° 01' 51.7"N 061° 33' 57.3"W	Establish a fairway buoy equipped with a white lantern with flash characteristics Mo (A) 6s. Seasonal operation.
880.2	Smith Point light buoy VK13	46° 00' 29.3"N 061° 32' 46.8"W	Establish a port hand buoy equipped with a green lantern with flash characteristics FI 0.5 s, Ec 3.5 s. Seasonal operation.
880.5	Port Hood Causeway South light buoy VK15	46° 01' 03.5"N 061° 33' 02.7"W	Establish a port hand buoy equipped with a green lantern with flash characteristics FI 0.5 s, Ec 3.5 s.
880.6	Port Hood Causeway South light buoy VK16	46° 01' 03.8"N 061° 33' 01.8"W	Establish a starboard buoy equipped with a red lantern with flash characteristics FI 0.5 s, Ec 3.5 s.
880.7	Port Hood Causeway North light buoy VK17	46° 01' 04.9"N 061° 33' 01.8"W	Establish a port hand buoy equipped with a green lantern with flash characteristics FI 0.3 s, Ec 0.7 s.
880.8	Port Hood Causeway North light buoy VK18	46° 01' 05.1"N 061° 33' 03.1"W	Establish a starboard buoy equipped with a red lantern with flash characteristics FI 0.3 s, Ec 0.7 s.
5880.3	Port Hood Buoy VK14	46° 00' 31.2"N 061° 32' 30.6"W	Discontinue buoy.
5882.3	Smith Point South cardinal buoy VM	46° 00' 23.2"N 061° 33' 07.6"W	Add a white lantern with flash characteristics: Q(6)+LFI 15 s.

Comments on this action are solicited from mariners and other interested parties by July 31, 2020, three months following the initial publication date of April 24, 2020. Following this date, this notice will be cancelled. Comments should be directed to the following:

Superintendent, Aids to Navigation  
Canadian Coast Guard  
P.O. Box 5667  
250 Southside Road  
St. John's, NL A1C 5X1  
Telephone: (902) 566-7936  
Email: [claire.maclaren@dfo-mpo.gc.ca](mailto:claire.maclaren@dfo-mpo.gc.ca)

Any objections raised must state the facts on which they are based and should include supporting information on safety, commerce and public benefit.

(G2020-023P, 024P, 025P, 028)

2020

**\*413(P) CONCEPTION BAY – LIGHT BUOY TO BE ESTABLISHED**

Reference Chart: 4847

The Canadian Coast Guard proposes to establish the following aid to navigation:

Harbour Rock Shoal light buoy (LL 488.5) (47° 30' 01.7"N 053° 11' 29.3"W)

Comments on this action are solicited from mariners and other interested parties by July 31, 2020, three months following the initial publication date of April 24, 2020. Following this date, this notice will be cancelled. Comments should be directed to the following:

Superintendent, Aids to Navigation  
Canadian Coast Guard  
P.O. Box 5667  
250 Southside Road  
St. John's, NL A1C 5X1  
Telephone: (902) 566-7936  
Email: [claire.maclaren@dfo-mpo.gc.ca](mailto:claire.maclaren@dfo-mpo.gc.ca)

Any objections raised must state the facts on which they are based and should include supporting information on safety, commerce and public benefit.

(N2020-021)

**\*414(P) PLANS, CONCEPTION BAY, TRINITY BAY AND / ET BONAVISTA HARBOUR – LIGHT BUOY TO BE ESTABLISHED**

Reference Chart: 4849

The Canadian Coast Guard proposes to establish the following aid to navigation:

Freshwater Cove light buoy (LL 476.2): (47° 45' 29.7"N 053° 10' 18.4"W)

Comments on this action are solicited from mariners and other interested parties by July 31, 2020, three months following the initial publication date of April 24, 2020. Following this date, this notice will be cancelled. Comments should be directed to the following:

Superintendent, Aids to Navigation  
Canadian Coast Guard  
P.O. Box 5667  
250 Southside Road  
St. John's, NL A1C 5X1  
Telephone: (902) 566-7936  
Email: [claire.maclaren@dfo-mpo.gc.ca](mailto:claire.maclaren@dfo-mpo.gc.ca)

Any objections raised must state the facts on which they are based and should include supporting information on safety, commerce and public benefit.

(N2020-020)

2020

**\*415(P) CARMANVILLE TO / À BACALHOA ISLAND AND / ET FOGO – NOTICE OF PROPOSED CHANGES**

Reference Chart: 4862

The Canadian Coast Guard proposes to permanently change the following aids to navigation:

LL #	Aid Name	Position	Proposed Changes
387	Frederickton Outer light buoy DK6	49° 25' 52.8"N 054° 21' 13.1"W	Reposition buoy to the following position: 49° 25' 55.7"N 054° 21' 12.8"W.
387.05	Frederickton Harbour light buoy DK5	49° 25' 53.7"N 054° 21' 10.0"W	Establish a port hand buoy equipped with a green lantern with flash characteristics: Fl 0.5 s, Ec 3.5 s.
387.1	Frederickton Middle light buoy DK8	49° 25' 48.8"N 054° 21' 14.6"W	Remove lantern. Reposition buoy to the following position: 49° 25' 50.0"N 054° 21' 13.5"W.
387.12	Frederickton Inner light buoy DK9	49° 25' 45.3"N 054° 21' 19.1"W	Remove lantern.
387.92	Frederickton Harbour light buoy DK3	49° 25' 59.0"N 054° 21' 20.0"W	Discontinue buoy.

Comments on this action are solicited from mariners and other interested parties by July 31, 2020, three months following the initial publication date of April 24, 2020. Following this date, this notice will be cancelled. Comments should be directed to the following:

Superintendent, Aids to Navigation  
Canadian Coast Guard  
P.O. Box 5667  
250 Southside Road  
St. John's, NL A1C 5X1  
Telephone: (902) 566-7936  
Email: [claire.maclaren@dfo-mpo.gc.ca](mailto:claire.maclaren@dfo-mpo.gc.ca)

Any objections raised must state the facts on which they are based and should include supporting information on safety, commerce and public benefit.

(N2020-024, 025)

**\*416(T) SAINT JOHN HARBOUR AND APPROACHES / ET LES APPROCHES – WHARF CONSTRUCTION**

Reference Chart: 4117

Effective April 13, 2020 until April 13, 2021, wharf construction underway at Piers 1, 2, 3 and Rodney Terminal at the following position: 45° 15' 57.4"N 066° 04' 11.0"W.

Authorized vessels should use the small craft base at Pier 3A, transit via the Rodney Slip side and remain well clear of any work vessels. Unauthorized vessels should remain well clear of the construction site safety area and work vessels. Minimum wash.

NW-M-0449-20

2020

**\*509(P) TADOUSSAC À/TO CAP ÉTERNITÉ – LIGHT BUOY TO BE DISCONTINUED**

Reference Chart: 1203

The Canadian Coast Guard proposes to permanently discontinue the following aid to navigation:

Haut-fond Prince light and bell buoy SAGUE (LL 1774) (48° 07' 08.8"N 069° 36' 05.5"W)

Comments on this action are solicited from mariners and other interested parties by August 28, 2020, three months following the initial publication date of May 29, 2020. Following this date, this notice will be cancelled. Comments should be directed to the following:

Superintendent, Mathieu Roy  
Aids to Navigation & Waterways  
Canadian Coast Guard  
1550 D'Estimauville Avenue  
Québec, QC G1J 5E9  
Telephone: (418) 648-7450  
Email: [mathieu.roy@dfo-mpo.gc.ca](mailto:mathieu.roy@dfo-mpo.gc.ca)

Any objections raised must state the facts on which they are based and should include supporting information on safety, commerce and public benefit.

(Q2020-070)

**\*510(P) KNIGHT INLET – DAYBEACON TO BE DISCONTINUED**

Reference Chart: 3515

The Canadian Coast Guard proposes to permanently discontinue the following aid to navigation:

Irvine Point port daybeacon (LL 5348) (50° 49' 20.8"N 126° 13' 46.4"W)

Comments on this action are solicited from mariners and other interested parties by August 28, 2020, three months following the initial publication date of May 29, 2020. Following this date, this notice will be cancelled. Comments should be directed to the following:

A/Superintendent, Glenna Evans  
Aids to Navigation & Waterways, Western Region  
Canadian Coast Guard  
25 Huron Street  
Victoria, BC V8V 4V9  
Telephone: (250) 480-2602  
Fax: (250) 480-2702  
Email: [glenna.evans@dfo-mpo.gc.ca](mailto:glenna.evans@dfo-mpo.gc.ca)

Any objections raised must state the facts on which they are based and should include supporting information on safety, commerce and public benefit.

(P2020-036)

2020

**\*511(P) PLANS - JOHNSTONE STRAIT – DAYBEACON TO BE DISCONTINUED**

Reference Chart: 3564

The Canadian Coast Guard proposes to permanently discontinue the following aid to navigation:

Lily Islet starboard daybeacon (LL 5343) (50° 31' 53.8"N 126° 15' 24.6"W)

Comments on this action are solicited from mariners and other interested parties by August 28, 2020, three months following the initial publication date of May 29, 2020. Following this date, this notice will be cancelled. Comments should be directed to the following:

A/Superintendent, Glenna Evans  
Aids to Navigation & Waterways, Western Region  
Canadian Coast Guard  
25 Huron Street  
Victoria, BC V8V 4V9  
Telephone: (250) 480-2602  
Fax: (250) 480-2702  
Email: [glenna.evans@dfo-mpo.gc.ca](mailto:glenna.evans@dfo-mpo.gc.ca)

Any objections raised must state the facts on which they are based and should include supporting information on safety, commerce and public benefit.

(P2020-035)

**\*611(P) ÎLE MARCOTTE À/T0 RAPIDES-DES-JOACHIMS – FIXED AID TO NAVIGATION TO BE REPLACED WITH LIGHTED BUOY**

Reference Chart: 1553

The Canadian Coast Guard proposes to discontinue the following fixed aid to navigation, replace it with a lighted buoy and add a light to a separate aid:

Short Turn Island (LL 1310): (45° 55' 49.3"N 077° 15' 23.6"W)

Comments on this action are solicited from mariners and other interested parties by September 25, 2020, three months following the initial publication date of June 26, 2020. Following this date, this notice will be cancelled. Comments should be directed to the following:

Supervisor, Ryan Goodearle  
Aids to Navigation & Waterways  
Canadian Coast Guard  
520 Exmouth Street  
Sarnia, ON N7T 8B1  
Telephone: (519) 383-1871  
Email: [Ryan.Goodearle@dfo-mpo.gc.ca](mailto:Ryan.Goodearle@dfo-mpo.gc.ca)

Any objections raised must state the facts on which they are based and should include supporting information on safety, commerce and public benefit.

(B2020-017)

2020

**\*612(P) HEAD OF / FOND DE PLACENTIA BAY – BELL TO BE DISCONTINUED**

Reference Chart: 4839

The Canadian Coast Guard proposes to permanently discontinue the bell from the following aid to navigation:

Southern Harbour light and bell buoy ES (LL 38.5) (47° 41' 52.3"N 053° 58' 37.0"W)

The buoy and the light will remain.

Comments on this action are solicited from mariners and other interested parties by September 25, 2020, three months following the initial publication date of June 26, 2020. Following this date, this notice will be cancelled. Comments should be directed to the following:

A/Superintendent, Aids to Navigation  
Canadian Coast Guard  
P.O. Box 1236  
Unit 2 - 185 John Yeo Drive  
Charlottetown, PEI C1A 7M8  
Telephone: (902) 566-7936  
Email: [Claire.MacLaren@dfo-mpo.gc.ca](mailto:Claire.MacLaren@dfo-mpo.gc.ca)

Any objections raised must state the facts on which they are based and should include supporting information on safety, commerce and public benefit.

(N2020-031)

**\*613(P) FORT FRANCES TO/À HOSTESS ISLAND AND/ET SANDPOINT ISLAND – FIXED AID TO NAVIGATION TO BE REPLACED WITH LIGHTED BUOY**

Reference Chart: 6108

The Canadian Coast Guard proposes to discontinue the following fixed aid to navigation and replace it with a lighted buoy:

Crowe Island (LL 1446): (48° 43' 59.5"N 093° 18' 16.8"W)

Comments on this action are solicited from mariners and other interested parties by September 25, 2020, three months following the initial publication date of June 26, 2020. Following this date, this notice will be cancelled. Comments should be directed to the following:

Supervisor, Ryan Goodearle  
Aids to Navigation & Waterways  
Canadian Coast Guard  
520 Exmouth Street  
Sarnia, ON N7T 8B1  
Telephone: (519) 383-1871  
Email: [Ryan.Goodearle@dfo-mpo.gc.ca](mailto:Ryan.Goodearle@dfo-mpo.gc.ca)

Any objections raised must state the facts on which they are based and should include supporting information on safety, commerce and public benefit.

(D2020-021)