



Fisheries and Oceans
Canada

Pêches et Océans
Canada

Canadian
Coast Guard

Garde côtière
canadienne

Notices to Mariners

Edition No. 08/2022
August 26, 2022



Safety First, Service Always

Monthly Summary of Temporary and Preliminary Notices

Canada 

Notices to Mariners – Monthly Summary of Temporary and Preliminary Notices
Edition No. 08/2022

Aussi disponible en français :
Avis aux navigateurs – Sommaire mensuel des avis temporaires et préliminaires
Édition n° 08/2022

Published under the Authority of:

Canadian Coast Guard Programs
Aids to Navigation and Waterways
Fisheries and Oceans Canada
Montreal, QC H2Y 2E7

For more information, contact Notmar.XNCR@dfo-mpo.gc.ca.

© Her Majesty the Queen in Right of Canada,
as represented by the Minister of Fisheries, Oceans
and the Canadian Coast Guard, 2022.

Cat. No. Fs151-19E-PDF (Electronic PDF, English)
ISSN 2561-5106

Cat. No. Fs151-19F-PDF (Electronic PDF, French)
ISSN 2561-5114

A web version is available here:

<https://www.notmar.gc.ca/temp-pre-monthly> (English)

<https://www.notmar.gc.ca/temp-pre-mensuel> (French)

Explanatory Notes

Geographical positions refer directly to the graduations of the largest scale Canadian Hydrographic Service chart (unless otherwise indicated).

Bearings refer to the true compass and are measured clockwise from 000° (North) clockwise to 359°; those relating to lights are from seaward.

Visibility of lights is that in clear weather.

Depths - The units used for soundings (metres, fathoms or feet) are stated in the title of each chart.

Elevations are normally given above Higher High Water, Large Tide (unless otherwise indicated).

Explanation of Temporary and Preliminary Notices to Mariners

Certain Notices to Mariners appearing in the monthly editions have a (T) or (P) appended to the regular number. These letters indicate that the information contained in the notice is of a temporary or preliminary nature, respectively.

Temporary (T) Notices

If a temporary change in conditions affecting navigation exists and if the change will be effective for a period of over three months, a temporary (T) notice will be published. Temporary changes which are effective for periods of less than three months will not normally be published (unless it is of exceptional interest). Otherwise, information will be promulgated as a Navigational Warning (NAVWARN) by the Canadian Coast Guard Marine Communications and Traffic Services (MCTS) Centre(s) in the affected area. (T) notices will be cancelled as necessary.

Please note that (T) notices with an end date will be automatically cancelled once the end date has passed. In the event of a change to these notices, a new Notice to Mariners will be issued.

Preliminary (P) Notices

- a. When important changes affecting navigation are to take place in the near future, a Notice to Mariners describing the change will be published, so that mariners will have advance information on the change. Such notices will be designated (P).
- b. When a change in conditions affecting navigation has taken place but full information is not available, a preliminary (P) notice giving available information will be published. This notice will be followed by a regular notice when complete information becomes available. The regular notice will cancel the (P) notice.
- c. When a change has taken place which is too complex to describe in a written notice, a (P) notice giving general information will be published. This notice will explain that follow up action will be taken to update charts by publishing patch corrections, new editions or new charts.

Please note that following the expiry of the 90-day comment or objection period, (P) notices describing proposed changes or intention to discontinue will be automatically cancelled. In the event of a change to these notices, a new Notice to Mariners will be issued.

Action Required on Receipt Of (T) & (P) Notices

It is not customary to make permanent corrections to charts and publications from (T) & (P) notices. On receipt of such notices, the information they contain should be noted in pencil on the affected charts and/or publications.

Caution

Mariners are reminded that charts and publications are not corrected from (T) & (P) notices when purchased from suppliers. For the list of charts affected by (T) & (P) notices, please refer to the index on page ii of this publication.

Table of Contents

Newfoundland and Labrador Coast **1**

Temporary Notices

No notices applicable for this edition..... 1

Preliminary Notices

*605(P)/22 Cape Pine to / au Cape St Mary's – Bell to be Discontinued 1
 *706(P)/22 White Bay and / et Notre Dame Bay – Notice of Proposed Changes 1
 *707(P)/22 Conception Bay – Notice of Proposed Changes 2
 *708(P)/22 Greenspond Harbour to / à Pound Cove – Notice of Proposed Changes..... 2

Atlantic Coast **3**

Temporary Notices

*111(T)/21 Rivière des Prairies – Construction Operations..... 3
 *206(T)/21 Plans, Baie des Chaleurs/Chaleur Bay (côte nord/north shore) – Federal Wharf Closed to Navigation 3
 *318(T)/21 Pointe des Monts aux/to Escoumins – Scientific Moorings 3
 *207(T)/22 Port de Québec – Obstruction 3
 *208(T)/22 Sault-au-Cochon à/to Québec – Waterway Information..... 3
 *209(T)/22 Rivière Ristigouche / Restigouche River – Federal Wharf Closed to Navigation..... 4
 *307(T)/22 Port de Québec – Waterway Information..... 4
 *411(T)/22 Lac Saint-Pierre – Obstruction: Floating and Falling Debris 4
 *513(T)/22 Plans, Baie des Chaleurs/Chaleur Bay (côte nord/North Shore) – Federal Wharf Permanently Closed to Navigation..... 4
 *709(T)/22 Port de Québec – Bridge Lights Temporarily Unlit 4
 *809(T)/22 Port de Montréal – Waterway Information: Calculation of Under-Keel Clearance 5
 *810(T)/22 Île du Petit Mécatina aux/to Îles Sainte-Marie – Waterway Information: Shoal 5
 *811(T)/22 Cap-aux-Meules – Waterway Information: Restrictions 5

Preliminary Notices

*606(P)/22 Saint John Harbour and Approaches / et les approches – Aid to Navigation Name to be Changed..... 6
 *607(P)/22 Saint John to / à Evandale – Aid to Navigation Name to be Changed..... 6
 *608(P)/22 Evandale to / à Ross Island – Aid to Navigation Names to be Changed 7
 *609(P)/22 Halifax Harbour: Point Pleasant to / à Bedford Basin – Aid to Navigation Name to be Changed..... 7
 *610(P)/22 Lockeport to / à Cape Sable – Aid to Navigation Names to be Changed 8
 *611(P)/22 Wedgeport and Vicinity / et les abords – Aid to Navigation Names to be Changed 9
 *612(P)/22 Pearl Island to / à Cape La Have – Aid to Navigation Name to be Changed..... 9
 *613(P)/22 St. Margaret's Bay – Aid to Navigation Names to be Changed..... 10
 *710(P)/22 Charlottetown Harbour – Notice of Proposed Changes 10
 *711(P)/22 Hillsborough Bay – Aids to navigation to be Discontinued 10

*812(P)/22	Halifax Harbour: Black Point to / à Point Pleasant – Aid to Navigation to be Discontinued.....	11
------------	--	----

Inland Waters	12
----------------------	-----------

Temporary Notices

*909(T)/14	Kingston Harbour and Approaches/et les approches – Dock Unserviceable	12
*1005(T)/15	Port Dalhousie – East and West Piers: Access Forbidden	12
*515(T)/16	Harbours on the East Shore of Lake Superior/Ports sur la rive est du lac Supérieur – Buoys Temporarily Discontinued	12
*814(T)/16	Main Duck Island to/à Scotch Bonnet Island – Partially Submerged Fixed Steel Barges	12
*1011(T)/16	Lake Ontario/Lac Ontario (Western Portion/Partie Ouest) – Silting Reported	13
*1218(T)/16	Hamilton Harbour – Silting Reported	13
*1219(T)/16	Toronto to/à Hamilton – Construction Operations	13
*108(T)/17	Harbours in Lake Erie/Havres dans le lac Érié – Unlit Buoys Temporarily Repositioned	13
*309(T)/17	Pelee Passage to/à la Detroit River – Low Water Levels Reported.....	14
*1205(T)/17	Toronto Harbour – Breakwater Entrance to Marina Closed Due to the Collapse of the Breakwater	14
*1206(T)/17	Lake Rosseau and/et Lake Joseph – Unlit Buoy Temporary Established	14
*709(T)/18	Kingston Harbour and Approaches/et les approches – Information Regarding Mooring and Anchoring	14
*809(T)/18	Cobourg to/à Oshawa – Dredging Operations.....	15
*314(T)/20	Toronto Harbour – Construction Operations.....	15
*710(T)/20	Murray Canal to Healey Falls Locks / Murray Canal aux Écluses de Healey Falls – Construction Operations	16
*908(T)/20	Smith Falls to/à Kingston including/y compris Tay River to/à Perth – Construction Operations.....	16
*1012(T)/20	Kingston Harbour and Approaches/et les approches – Construction Operations.....	16
*1210(T)/20	Demarcation Bay to/à Philips Bay – Mobile Offshore Drilling Unit Temporarily Established.....	16
*112(T)/21	Upper Gap to/à Telegraph Narrows – Construction Operations	16
*413(T)/21	Kingston Harbour and Approaches/et les approches – Aid to Navigation Temporarily Unlit	17
*810(T)/21	Fort Frances to/à Hostess Island and/et Sandpoint Island – Aids to Navigation Temporarily Discontinued	17
*907(T)/21	Lac des Deux Montagnes – Missing Unlit Buoy	17
*107(T)/22	Canal de la Rive Sud – Waterways Information	17
*108(T)/22	Lower Gap to/à Adolphus Reach – Construction Operations Frontenac II Ferry Dock .	17
*413(T)/22	Detroit River – Waterway Information: Bridge Construction.....	18
*614(T)/22	Canal de la Rive Sud – Bridge Repair Work.....	18
*615(T)/22	Canal de la Rive Sud – Bridge Demolition.....	18
*616(T)/22	Canal de la Rive Sud – Federal Wharf Permanently Closed to Navigation	18
*617(T)/22	Lac Saint-Louis – Aids to Navigation Temporarily Established	18

*618(T)/22	Point Clark to/à Southampton – Aids to Navigation Established.....	19
*813(T)/22	Lac Saint-Louis – Obstruction: Rock.....	19

Preliminary Notices

*814(P)/22	Lake Nipissing / Lac Nipissing (Eastern Portion / Partie est) – Unlit Buoy to be Discontinued.....	19
*815(P)/22	Iron Island to/à West Bay – Range Lights to be Discontinued	20

Pacific Coast	21
----------------------	-----------

Temporary Notices

*610(T)/21	Laredo Sound – Trial AIS Unit Installed.....	21
*811(T)/21	Plans - Stuart Channel – Marine Works	21

Preliminary Notices

No notices applicable for this edition.....	21
---	----

Other (T) & (P) Notices	22
------------------------------------	-----------

Temporary Notices

*1105(T)/15	Canada – Safety of Offshore Exploration and Exploitation Vessels	22
*208(T)/21	Canadian Coast Guard – Automatic Identification System (AIS)	22

Preliminary Notices

*816(P)/22	Canadian Hydrographic Service – Raster Navigational Charts to be Discontinued	23
------------	---	----

List of Charts Affected by (T) & (P) Notices

Chart No.	Pages	Chart No.	Pages	Chart No.	Pages
1236	3	2077	13	4426	4
1310	5	2085	14, 15	4460	10
1312	4	2086	13	4466	10
1316	3, 4	2123	14	4468	5
1317	3	2181	13	4821	1
1429	17, 18	2291	19	4842	1
1430	18, 19	2315	12	4847	2
1509	3	3475	21	4858	2
1510	17	3980	21	4921	3, 4
1513	16	4117	6	4956	5
2006	16	4141	6	6022	14
2017	12, 14, 16, 17	4142	7	6035	19
2018	17	4202	7	6037	19
2021	16	4203	11	6108	17
2044	12	4241	8	7661	16
2058	15	4244	9	14853	18
2060	12	4384	9		
2067	13	4386	10		

Newfoundland and Labrador Coast

Temporary Notices

No notices applicable for this edition.

Preliminary Notices

Atlantic Region

Comment Submission

Comments on proposed changes in preliminary (P) notices are solicited from mariners and other interested parties within three months of the initial publication date. Following this date, the notices will be cancelled. Any objections raised must state the facts on which they are based and should include supporting information on safety, commerce and public benefit.

Comments should be directed to the following:

Superintendent,
Aids to Navigation & Waterways
Canadian Coast Guard, Atlantic Region
P.O. Box 1000
50 Discovery Drive
Dartmouth, NS B2Y 3Z8
Telephone: (506) 636-4708
Email: [DFO.CCGATLaidstoNavDiscont-
AidesalanavSupprATLGCC.MPO@dfo-mpo.gc.ca](mailto:DFO.CCGATLaidstoNavDiscont-AidesalanavSupprATLGCC.MPO@dfo-mpo.gc.ca)

***605(P)/22 Cape Pine to / au Cape St Mary's – Bell to be Discontinued**

Reference chart: 4842

The Canadian Coast Guard proposes to permanently discontinue the bell from the following aid to navigation:

Aid Name	LL #	Position
Point La Haye light and bell buoy MH2	7.5	46° 53' 35.8"N 053° 37' 35.9"W

The buoy and the light will remain.

Initial publication date: Friday, June 24, 2022

[Comment submission deadline](#): Thursday, September 29, 2022

(N2022-084)

***706(P)/22 White Bay and / et Notre Dame Bay – Notice of Proposed Changes**

Reference chart: 4821

The Canadian Coast Guard proposes to permanently change the following aid to navigation:

Aid Name	LL #	Position	Proposed Changes
Gull Island (Cape St. John)	326	49° 59' 48.3"N 055° 21' 54.4"W	Discontinue the fog signal. Change name to: "Gull Island Light Station (Cape St. John)". Change flash characteristics to: Fl 2 s; Ec 8 s.

Initial publication date: Friday, July 29, 2022

[Comment submission deadline](#): Thursday, October 27, 2022

(N2022-132)

***707(P)/22 Conception Bay – Notice of Proposed Changes**

Reference chart: 4847

The Canadian Coast Guard proposes to permanently change the following aid to navigation:

Aid Name	LL #	Position	Proposed Changes
Bell Island Ferry Wharf Light & Fog Signal	494	47° 37' 45.9"N 052° 55' 26.0"W	Discontinue the fog signal. Change name to: "Bell Island Ferry Wharf Light". Change flash characteristics to: Fl 2 s; Ec 4 s.

Initial publication date: Friday, July 29, 2022

[Comment submission deadline](#): Thursday, October 27, 2022

(N2022-131)

***708(P)/22 Greenspond Harbour to / à Pound Cove – Notice of Proposed Changes**

Reference chart: 4858

The Canadian Coast Guard proposes to permanently change the following aid to navigation:

Aid Name	LL #	Position	Proposed Changes
Puffin Island	430	49° 03' 42.0"N 053° 33' 03.2"W	Discontinue the fog signal. Change name to: "Puffin Island Light Station". Change flash characteristics to: Fl 2 s; Ec 4 s.

Initial publication date: Friday, July 29, 2022

[Comment submission deadline](#): Thursday, October 27, 2022

(N2022-130)

Atlantic Coast

Temporary Notices

***111(T)/21 Rivière des Prairies – Construction Operations**

Reference chart: 1509

Repair work is taking place 24 hours a day at the Pie-IX bridge as of August 17th, 2020.

Buoys, jetties, and a turbidity curtain are in place.

(NW-Q-1112-20)

***206(T)/21 Plans, Baie des Chaleurs/Chaleur Bay (côte nord/north shore) – Federal Wharf Closed to Navigation**

Reference: Notice *1118/19 is cancelled.

Reference chart: 4921

The federal wharf at Chandler is closed to navigation. For safety reasons, it is not permitted to berth at the wharf.

For more information, please contact Mr. Simon Bilodeau at Transport Canada at 418-563-2325 or by email at the following address: simon.bilodeau@tc.gc.ca.

(NAVWARN NW-Q-1580-16)

***318(T)/21 Pointe des Monts aux/to Escoumins – Scientific Moorings**

Reference chart: 1236

Over 80 underwater scientific moorings have been placed in the area delimited by the following positions:

Pt 1:	49° 18' 00.7"N	067° 40' 03.6"W
Pt 2:	49° 18' 12.0"N	067° 43' 30.8"W
Pt 3:	49° 17' 31.3"N	067° 43' 32.4"W
Pt 4:	49° 17' 25.3"N	067° 40' 15.5"W

(NW-Q-0968-20)

***207(T)/22 Port de Québec – Obstruction**

Reference chart: 1316

Power boat 6 metres in length reported sunk at 46° 43.830'N 071° 20.000'W.

(NW-Q-1348-21)

***208(T)/22 Sault-au-Cochon à/to Québec – Waterway Information**

Reference chart: 1317

Shallower depth of 5.9 metres located at: 47° 08.911'N 070° 40.591'W.

(NW-Q-0092-22)

***209(T)/22 Rivière Ristigouche / Restigouche River – Federal Wharf Closed to Navigation**

Reference: Notice 716(T)/19 is cancelled.

Reference chart: 4426

The federal wharf at Miguasha is closed to navigation. For reasons of safety and because of the collapsing risk, it is not permitted to berth at the wharf or to come closer than 20 metres from these structures.

For more information, please contact the regional representative of port operations at Transport Canada, Quebec region, M. Hugues Gagnon-Montreuil at 581-398-8378.

(NW-Q-0318-16)

***307(T)/22 Port de Québec – Waterway Information**

Reference chart: 1316

Repair work with scaffolding taking place on the Pierre-Laporte bridge Monday to Saturday. Bridge clearance reduced by 2.6 metres.

(NW-Q-0182-22)

***411(T)/22 Lac Saint-Pierre – Obstruction: Floating and Falling Debris**

Reference chart: 1312

Floating and falling debris reported beneath the bridge located at 46° 04.783'N 073° 09.205'W. The bridge is marked with yellow buoys suspended at mid-height between the deck and the water level. Warning signs installed above.

(NW-Q-1266-19)

***513(T)/22 Plans, Baie des Chaleurs/Chaleur Bay (côte nord/North Shore) – Federal Wharf Permanently Closed to Navigation**

Reference chart: 4921

The federal wharf in Paspébiac is permanently closed to navigation. For safety reasons, it is forbidden to moor there or drive in a vehicle.

For additional information, please contact the program officer responsible for Paspébiac port operations at Transport Canada, Mr. Hugues Gagnon-Montreuil at 418-398-8378 or TC.QUEPorts-PortsQUE.TC@tc.gc.

***709(T)/22 Port de Québec – Bridge Lights Temporarily Unlit**

Reference chart: 1316

The following four red lights, located on the Pierre-Laporte bridge, are temporarily unlit:

Pont Pierre-Laporte Northeast Light	46° 44.815'N 071° 17.480'W
Pont Pierre-Laporte Northwest Light	46° 44.809'N 071° 17.502'W
Pont Pierre-Laporte Southeast Light	46° 44.629'N 071° 17.368'W
Pont Pierre-Laporte Southwest Light	46° 44.622'N 071° 17.390'W

(NW-Q-1281-21, NW-Q-1282-21, NW-Q-1283-21, NW-Q-1284-21)

***809(T)/22 Port de Montréal – Waterway Information: Calculation of Under-Keel Clearance**

Reference chart: 1310

Canadian Coast Guard Marine Communications and Traffic Services has been using all Canadian Hydrographic Service water-level stations for the calculation of passage authorizations in the Sorel–Montreal sector of the navigational waterway, namely Sorel, Contrecoeur, Varennes, Montreal-Frontenac and Montreal-Jetty No. 1.

In light of the particular features of the navigational waterway in the portion between buoys M84 (downstream of the municipality of Verchères) and M157 (opposite to the Port of Montreal, section 109) as well as the No. 1 Anchorage Pointe-aux-Tremble, it was agreed to adjust upward the available water column by 10 cm in this portion.

The minimum water column in this portion of the navigational waterway as per the Varennes hydrographic station, obtained after adjustment, will be used for the calculation of under-keel clearance.

(NW-Q-0776-22)

***810(T)/22 Île du Petit Mécatina aux/to Îles Sainte-Marie – Waterway Information: Shoal**

Reference chart: 4468

Rocky shoal located at the entrance to Harrington Harbour. Navigation must take place between the wharf and the red lantern at 50° 29.832'N 059° 28.581'W.

(NW-Q-1494-20)

***811(T)/22 Cap-aux-Meules – Waterway Information: Restrictions**

Reference chart: 4956

Restrictions in place and mooring prohibited in certain areas at the fishermen's wharf, at the port of Cap-aux-Meules.

Contact the port manager for more information at 418-937-7635.

(NW-Q-0199-21)

Preliminary Notices

Atlantic Region

Comment Submission

Comments on proposed changes in preliminary (P) notices are solicited from mariners and other interested parties within three months of the initial publication date. Following this date, the notices will be cancelled. Any objections raised must state the facts on which they are based and should include supporting information on safety, commerce and public benefit.

Comments should be directed to the following:

Superintendent,
Aids to Navigation & Waterways
Canadian Coast Guard, Atlantic Region
P.O. Box 1000
50 Discovery Drive
Dartmouth, NS B2Y 3Z8
Telephone: (506) 636-4708
Email: DFO.CCGATLAidstoNavDiscont-AidesalanavSupprATLGCC.MPO@dfo-mpo.gc.ca

***606(P)/22 Saint John Harbour and Approaches / et les approches – Aid to Navigation Name to be Changed**

Reference chart: 4117

The Canadian Coast Guard proposes to permanently change the name of the following aid to navigation:

Aid Name	LL #	Position	Proposed Change
Negro Head light and bell buoy JA1	98	45° 11' 12.8"N 066° 08' 18.0"W	Change name to: "Lorneville Approach light buoy JA1"

Initial publication date: Friday, June 24, 2022

[Comment submission deadline](#): Thursday, September 29, 2022

(F2022-003)

***607(P)/22 Saint John to / à Evandale – Aid to Navigation Name to be Changed**

Reference chart: 4141

The Canadian Coast Guard proposes to permanently change the name of the following aid to navigation:

Aid Name	LL #	Position	Proposed Change
Indian Island buoy AM1	5116.1	45° 18' 25.3"N 066° 06' 49.9"W	Change name to: "Brothers Cove buoy AM1"

Initial publication date: Friday, June 24, 2022

[Comment submission deadline](#): Thursday, September 29, 2022

(F2022-002)

***608(P)/22 Evandale to / à Ross Island – Aid to Navigation Names to be Changed**

Reference chart: 4142

The Canadian Coast Guard proposes to permanently change the names of the following aids to navigation:

Aid Name	LL #	Position	Proposed Changes
Indian Point East spar buoy EF1	5141.601	46° 04' 49.8"N 065° 55' 22.9"W	Change name to: "Moray Point buoy EF1"
Indian Point North spar buoy EF3	5141.603	46° 05' 02.0"N 065° 55' 35.5"W	Change name to: "Moray Point buoy EF3"
Indian Point Northwest spar buoy EF4	5141.604	46° 05' 00.0"N 065° 55' 54.7"W	Change name to: "Moray Point buoy EF4"
Indian Point West spar buoy EF5	5141.605	46° 04' 54.8"N 065° 56' 17.0"W	Change name to: "Moray Point buoy EF5"

Initial publication date: Friday, June 24, 2022

[Comment submission deadline](#): Thursday, September 29, 2022

(F2022-002)

***609(P)/22 Halifax Harbour: Point Pleasant to / à Bedford Basin – Aid to Navigation Name to be Changed**

Reference chart: 4202

The Canadian Coast Guard proposes to permanently change the name of the following aid to navigation:

Aid Name	LL #	Position	Proposed Change
Indian Point light buoy HP21	534	44° 37' 46.5"N 063° 31' 56.8"W	Change name to: "Eastern Passage light buoy HP21"

Initial publication date: Friday, June 24, 2022

[Comment submission deadline](#): Thursday, September 29, 2022

(F2022-006)

***610(P)/22 Lockeport to / à Cape Sable – Aid to Navigation Names to be Changed**

Reference chart: 4241

The Canadian Coast Guard proposes to permanently change the names of the following aids to navigation:

Aid Name	LL #	Position	Proposed Changes
Negro Harbour light buoy SN52	350.02	43° 31' 48.9"N 065° 20' 53.0"W	Change name to: "East Point light buoy SN52"
Negro Harbour light buoy SP56	351.02	43° 32' 36.4"N 065° 21' 51.5"W	Change name to: "Apple Island light buoy SP56"
Negro Harbour light buoy SP59	351.04	43° 33' 08.0"N 065° 22' 04.0"W	Change name to: "North East Harbour light buoy SP59"
Negro Harbour light and whistle buoy SN	353	43° 31' 01.5"N 065° 18' 50.0"W	Change name to: "East Entrance Fairway light buoy SN"
Negro Harbour buoy SN56	5350.05	43° 32' 30.0"N 065° 23' 08.0"W	Change name to: "John Point buoy SN56"
Negro Harbour buoy SN59	5350.06	43° 32' 40.0"N 065° 24' 33.0"W	Change name to: "Franks Ledge buoy SN59"
Negro Harbour buoy SNP	5351.01	43° 32' 24.0"N 065° 22' 19.0"W	Change name to: "East Entrance Starboard Bifurcation buoy SNP"
Negro Harbour buoy SP65	5351.06	43° 33' 40.0"N 065° 22' 09.5"W	Change name to: "North East Harbour buoy SP65"

Initial publication date: Friday, June 24, 2022

[Comment submission deadline](#): Thursday, September 29, 2022

(F2022-005)

***611(P)/22 Wedgeport and Vicinity / et les abords – Aid to Navigation Names to be Changed**

Reference chart: 4244

The Canadian Coast Guard proposes to permanently change the names of the following aids to navigation:

Aid Name	LL #	Position	Proposed Changes
Indian Sluice Point Wharf	294.55	43° 46' 21.2"N 065° 57' 02.4"W	Change name to: "Sluice Point Wharf Light"
Indian Sluice Bay light buoy TE2	294.551	43° 44' 04.6"N 065° 56' 41.6"W	Change name to: "Wilson Island North light buoy TE2"
Indian Sluice Bay buoy TE1	5294.51	43° 44' 11.8"N 065° 56' 37.5"W	Change name to: "Wilson Island North buoy TE1"
Indian Sluice Bay buoy TE2/2	5294.52	43° 44' 17.8"N 065° 56' 30.4"W	Change name to: "Wilson Island North buoy TE2/2"
Indian Sluice Bay buoy TE4	5294.53	43° 44' 27.8"N 065° 56' 26.7"W	Change name to: "Mikes Island South buoy TE4"
Indian Sluice Bay buoy TE6	5294.54	43° 44' 38.8"N 065° 56' 20.4"W	Change name to: "Mikes Island East buoy TE6"
Indian Sluice Bay buoy TE8	5294.555	43° 44' 56.3"N 065° 56' 25.9"W	Change name to: "Mikes Island East buoy TE8"
Indian Sluice Bay buoy TE12	5294.57	43° 45' 22.3"N 065° 56' 39.9"W	Change name to: "Surettes Island West buoy TE12"
Indian Sluice Bay buoy TE13	5294.58	43° 45' 39.3"N 065° 56' 44.9"W	Change name to: "Surettes Island West buoy TE13"

Initial publication date: Friday, June 24, 2022

[Comment submission deadline](#): Thursday, September 29, 2022

(F2022-004)

***612(P)/22 Pearl Island to / à Cape La Have – Aid to Navigation Name to be Changed**

Reference chart: 4384

The Canadian Coast Guard proposes to permanently change the name of the following aid to navigation:

Aid Name	LL #	Position	Proposed Change
Indian Island light and whistle buoy TS51	420	44° 09' 18.3"N 064° 22' 13.8"W	Change name to: "Cape La Have Island South Whistle buoy TS51"

Initial publication date: Friday, June 24, 2022

[Comment submission deadline](#): Thursday, September 29, 2022

(F2022-005)

***613(P)/22 St. Margaret's Bay – Aid to Navigation Names to be Changed**

Reference chart: 4386

The Canadian Coast Guard proposes to permanently change the names of the following aids to navigation:

Aid Name	LL #	Position	Proposed Changes
Indian Harbour	482	44° 31' 20.3"N 063° 56' 45.7"W	Change name to: "Paddy Head Island Light"
Indian Harbour buoy DN56	5484.01	44° 31' 15.3"N 063° 56' 39.7"W	Change name to: "Paddy Head Island buoy DN56"
Indian Harbour buoy DN57	5484.02	44° 31' 22.3"N 063° 56' 40.7"W	Change name to: "Paddy Head Island buoy DN57"
Indian Harbour buoy DN58	5484.03	44° 31' 21.3"N 063° 56' 37.8"W	Change name to: "Paddy Head Island buoy DN58"
Indian Harbour buoy DN60	5484.04	44° 31' 24.8"N 063° 56' 37.8"W	Change name to: "Paddy Head Island buoy DN60"
Indian Harbour buoy DG52	5484.05	44° 32' 10.2"N 063° 56' 34.0"W	Change name to: "Modesty Cove buoy DG52"

Initial publication date: Friday, June 24, 2022

[Comment submission deadline](#): Thursday, September 29, 2022

(F2022-006)

***710(P)/22 Charlottetown Harbour – Notice of Proposed Changes**

Reference chart: 4460

The Canadian Coast Guard proposes to permanently change the following aid to navigation:

Aid Name	LL #	Position	Proposed Changes
Blockhouse Point	993	46° 11' 26.1"N 063° 07' 45.7"W	Decrease intensity of lantern. Change flash characteristics to: Fl 2 s; Ec 4 s.

Initial publication date: Friday, July 29, 2022

[Comment submission deadline](#): Thursday, October 27, 2022

(G2022-081)

***711(P)/22 Hillsborough Bay – Aids to navigation to be Discontinued**

Reference chart: 4466

The Canadian Coast Guard proposes to permanently discontinue the following aids to navigation:

Aid Name	LL #	Position
Spithead East Cardinal light buoy CJB	983.5	46° 09' 12.9"N 063° 07' 45.4"W
St. Peters Island South Cardinal buoy CJA	6001	46° 06' 06.2"N 063° 11' 37.0"W

Initial publication date: Friday, July 29, 2022

[Comment submission deadline](#): Thursday, October 27, 2022

(G2022-081)

***812(P)/22 Halifax Harbour: Black Point to / à Point Pleasant – Aid to Navigation to be Discontinued**

Reference chart: 4203

The Canadian Coast Guard proposes to permanently discontinue the following aid to navigation:

Aid Name	LL #	Position
Herring Cove Breakwater	522.1	44° 34' 09.6"N 063° 33' 25.4"W

Initial publication date: Friday, August 26, 2022

[Comment submission deadline](#): Thursday, November 24, 2022

(F2022-015)

Inland Waters

Temporary Notices

***909(T)/14 Kingston Harbour and Approaches/et les approches – Dock Unserviceable**

Reference chart: 2017

The Kingston psychiatric hospital dock is unserviceable and out of bounds for use as dockage until further notice.

(NOTSHIP C2409/10)

***1005(T)/15 Port Dalhousie – East and West Piers: Access Forbidden**

Reference chart: 2044

A recent engineering investigation identified structural issues and safety concerns with both the East and West piers at Port Dalhousie. In light of the inspection findings, the Department of Fisheries and Oceans is taking action to protect the safety of the public by prohibiting vessel, vehicular, and pedestrian access to the piers.

Vessels can still safely navigate the waters surrounding the piers, but will be unable to moor at the piers. The City of St. Catharines will accommodate boaters as possible at other local wharves.

Mark Sandeman
Area Manager, Client Services
Small Craft Harbours
Central & Arctic Region
Fisheries and Oceans Canada

3027 Harvester Road, Unit 310
Burlington, ON L7N 3G7
Telephone: (905) 639-2050
Facsimile: (905) 639-5975
Email: mark.sandeman@dfo-mpo.gc.ca

(NOTSHIP C567/15)

***515(T)/16 Harbours on the East Shore of Lake Superior/Ports sur la rive est du lac Supérieur – Buoys Temporarily Discontinued**

Reference chart: 2315

The Canadian Coast Guard has temporarily discontinued the following aids to navigation:
XT1, XT2, XT3, XT4, XT5, XT6, XT7, XT8, XT9, XT10, XT11, XT12.

(NOTSHIP C1045)

***814(T)/16 Main Duck Island to/à Scotch Bonnet Island – Partially Submerged Fixed Steel Barges**

Reference chart: 2060

There are 3 partially submerged fixed steel barges in North end of West Lake (43° 57' 02.3"N 077° 20' 12.8"W), which have been reported just below the water line.

Barges are marked with cautionary buoys.

(NOTSHIP C1641/14)

***1011(T)/16 Lake Ontario/Lac Ontario (Western Portion/Partie Ouest) – Silting Reported**

Reference chart: 2077

Silting reported in main entrance channel to Fifty Point Marina. Centre of channel depth reported to be 1.9 metres with shallower depths on the sides.

Mariners are requested to use caution in the area.

(NOTSHIP C2266/16)

***1218(T)/16 Hamilton Harbour – Silting Reported**

Reference chart: 2067

Silting reported along the North faces of Pier 11 and Pier 12:

Pier 11 North Face between positions 43° 16' 31"N 079° 50' 56"W and 43° 16' 29"N 079° 50' 49"W, and at position 43° 16' 28"N 079° 50' 42"W.

Pier 12 North Face between positions 43° 16' 27"N 079° 50' 39"W and 43° 16' 26"N 079° 50' 33"W.

Mariners are requested to use caution and reduce speed upon arrival and departure. Seaway draft will be affected when water level is less than 0.70 metres above chart datum in these areas.

(NOTSHIP C1831/13)

***1219(T)/16 Toronto to/à Hamilton – Construction Operations**

Reference chart: 2086

Construction operations taking place from November 14, 2016 until approximately 2026 at Lakeview Water Treatment Plant between Marie Curtis Park and Serson Creek. A variety of equipment will be used to expand the land mass along the shoreline. Landfill and 3 islands will be lit and marked.

(NOTSHIP C2533/16)

***108(T)/17 Harbours in Lake Erie/Havres dans le lac Érié – Unlit Buoys Temporarily Repositioned**

Reference chart: 2181

The following unlit spar buoys have been temporarily repositioned due to silting:

Aid Name	LL #	Temporary Changes
ES2	7169	Reposition to 42° 39' 10.0"N 081° 12' 32.0"W
ES3	7170	Reposition to 42° 39' 15.4"N 081° 12' 40.7"W
ES4	7171	Reposition to 42° 39' 16.8"N 081° 12' 37.7"W

The shallowest depth to 3.5M occurs between ES3 and ES4 with the deepest water off the red side of the channel. Mariners are requested to use caution in the area.

(B2017-003)

***309(T)/17 Pelee Passage to/à la Detroit River – Low Water Levels Reported**

Reference chart: 2123

Low water levels have been reported from the south end of the entrance to Sturgeon Creek Harbour northward.

Annette Winter
Project and Divestiture Officer
Small Craft Harbours
Fisheries and Oceans Canada

Canada Centre for Inland Waters (CCIW)
867 Lakeshore Road
Burlington, ON L7S 1A1
Telephone: (905) 315-5286
Email: annette.winter@dfo-mpo.gc.ca

(NOTSHIP C58/13)

***1205(T)/17 Toronto Harbour – Breakwater Entrance to Marina Closed Due to the Collapse of the Breakwater**

Reference chart: 2085

The breakwater entrance to the west of Ontario Place Marina has been closed due to the collapse of the breakwater.

Sub-surface hazards exist in the breakwater gap and on the inner and outer edge of the breakwater wall.

Green spar buoy BW1 has been removed, and 3 white and orange keep out markers have been placed in the breakwater entrance.

The outer edge of the breakwater wall is marked with 2 white and orange keep out markers.

The inner edge of the breakwater wall is marked with 3 white and orange keep out markers.

(NOTSHIP C79/13)

***1206(T)/17 Lake Rosseau and/et Lake Joseph – Unlit Buoy Temporary Established**

Reference chart: 6022

The following unlit buoy has been temporary established:

Aid Name	LL #	Position
P3/1	9089.1	45° 08' 09.0"N 079° 40' 36.0"W

(D2017-006)

***709(T)/18 Kingston Harbour and Approaches/et les approches – Information Regarding Mooring and Anchoring**

Reference: Notice 309(T)/14 is cancelled.

Reference chart: 2017

All mooring or anchoring within the public port of Kingston is prohibited outside of designated marina areas until further notice without authorization from the port official.

Inquiries are to be directed to Transport Canada at (416) 952-0475.

***809(T)/18 Cobourg to/à Oshawa – Dredging Operations**

Reference chart: 2058

Dredging operations in Port Hope Harbour from August 3, 2018 until December 30, 2022. A wave attenuator will block the entrance to the western basin.

Mariners are requested to stay clear of the area.

(NOTSHIP C1951/18)

***314(T)/20 Toronto Harbour – Construction Operations**

Reference: Notice 209(T)/20 is now cancelled.

Reference chart: 2085

Construction is taking place at Ashbridge's Bay and consists of the construction of two breakwaters and of a landform. A variety of equipment will be used, including tug boats and barges. Temporary aids to navigation will be placed prior to and during construction. The operations are scheduled to take at the following positions:

Breakwater construction operations

43° 39' 20.7"N 079° 18' 48.1"W

Phase 1: 2020-04-01 through 2020-12-31

Phase 2: 2021-04-01 through 2021-12-31

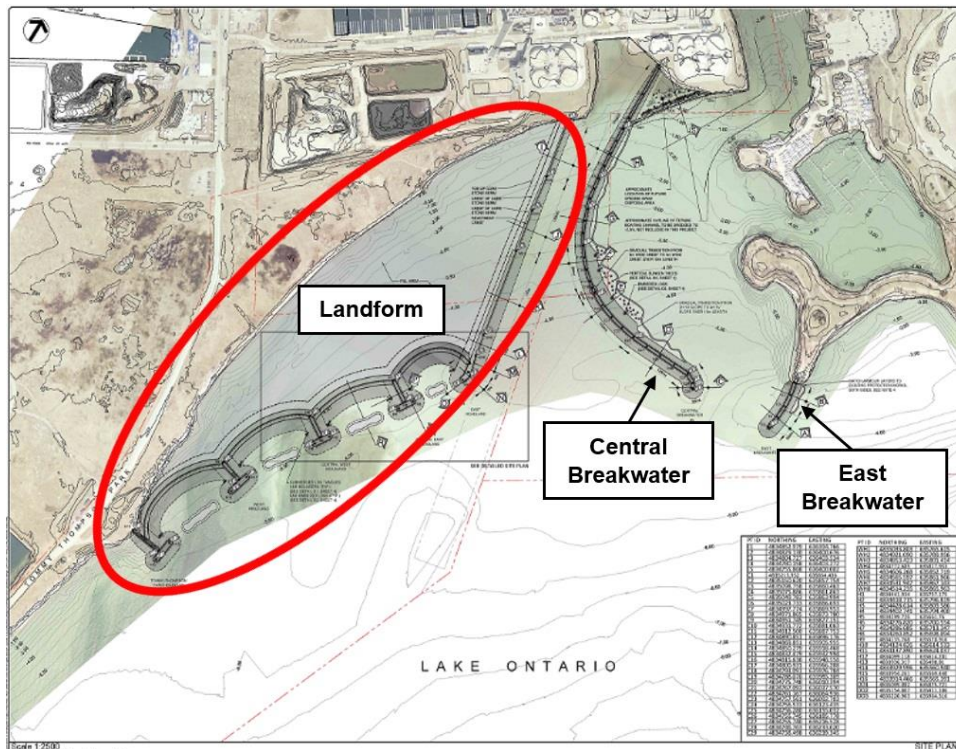
Phase 3: 2022-04-01 through 2022-12-31

Landform construction operations

43° 39' 01.4"N 079° 19' 01.9"W

Implementation of the shoreline infill area is expected to take approximately five years.

Mariners are requested to keep out of the construction zone.



***710(T)/20 Murray Canal to Healey Falls Locks / Murray Canal aux Écluses de Healey Falls – Construction Operations**

Reference chart: 2021

Construction operations, including diving operations, in progress as of July 6, 2020 between 1100 UTC and 0100 UTC at the mouth of the Trent River south of Dundas Street bridge in Trenton. The site is marked with red, green and white markers. Tug and barge on site, lit at night.

Vessels are advised to use caution when transiting the area and to keep clear of construction operations. Call 416-729-8830 for further details.

(NW-C-1012-20)

***908(T)/20 Smith Falls to/à Kingston including/à compris Tay River to/à Perth – Construction Operations**

Reference chart: 1513

Temporary closures of up to 30 minutes are expected in the navigation channel at the Third Crossing Bridge construction site. Spotter boats will be positioned 100 metres north and south of the bridge during work hours.

Installation of a temporary causeway is taking place between 44° 15.41'N 076° 28.78'W and 44° 15.52'N 076° 27.99'W.

(NW-C-3042-19, NW-C-1479-20)

***1012(T)/20 Kingston Harbour and Approaches/et les approches – Construction Operations**

Reference chart: 2017

Wharf construction is taking place daily from 1100 UTC to 2300 UTC at the Kingston-Wolfe Island ferry terminal. The ferry remains operational. Vessels are not permitted to dock on the south side. The construction area is marked and lit.

(NW-C-1786-20)

***1210(T)/20 Demarcation Bay to/à Philips Bay – Mobile Offshore Drilling Unit Temporarily Established**

Reference: Notice 616(T)/07 is cancelled.

Reference chart: 7661

The unmanned mobile offshore drilling unit “SDC” continues to be temporarily established at 69° 24.71'N 138° 53.76'W. The structure is 202.4 metres long and 53 metres wide.

For information, contact Captain Connelly at 1-250-598-4513 or 1-250-744-9818 or e-mail at doncon@islandnet.com or dcmarine@shaw.ca.

***112(T)/21 Upper Gap to/à Telegraph Narrows – Construction Operations**

Reference chart: 2006

Construction operations are currently underway on the Bay of Quinte Skyway Bridge.

During these operations, lit barges are on site and the bridge clearance is 19 metres.

(NW-C-2834-19)

***413(T)/21 Kingston Harbour and Approaches/et les approches – Aid to Navigation
Temporarily Unlit**

Reference chart: 2017

The following aid to navigation is temporarily unlit:

Marysville Wharf light (LL 399.3): 44° 11' 42.4"N 076° 26' 27.3"W

(NW-C-1802-20)

***810(T)/21 Fort Frances to/à Hostess Island and/et Sandpoint Island – Aids to Navigation
Temporarily Discontinued**

Reference chart: 6108

The following aids to navigation are temporarily discontinued:

Aid Name	LL #	Position
Noden Causeway East	1465	48° 39' 08.5"N 093° 18' 47.6"W
Noden Causeway West	1466	48° 39' 08.5"N 093° 18' 49.1"W

(D2021-026T, 027T)

***907(T)/21 Lac des Deux Montagnes – Missing Unlit Buoy**

Reference chart: 1510

The following unlit buoy is currently missing and will not be replaced before the 2022 navigation season:

Aid Name	LL #	Position
Chenal Saint-Placide buoy HJ17	6251.68	45° 31' 20.7"N 074° 12' 25.1"W

(NW-Q-1526-20)

***107(T)/22 Canal de la Rive Sud – Waterways Information**

Reference chart: 1429

Inspection work taking place under the Champlain bridge Monday to Friday from 1000 UTC until 1900 UTC. Tug "Intense" and barge are on site and will be lit and marked at night. Tug "Intense" monitoring VHF channel 79.

(NW-Q-1179-20)

***108(T)/22 Lower Gap to/à Adolphus Reach – Construction Operations Frontenac II Ferry
Dock**

Reference chart: 2018

Construction operations are taking place daily during daylight hours at the Millhaven and Stella ferry docks. Temporary docks will be installed in the vicinity of the ferry docks. Docks will be marked with buoys and lit with amber lights.

(NW-C-2916-17)

***413(T)/22 Detroit River – Waterway Information: Bridge Construction**

Reference chart: 14853

Bridge construction operations taking place in an area bounded by:

42° 17.200'N 083° 05.633'W
42° 17.183'N 083° 05.600'W
42° 17.067'N 083° 05.667'W
42° 17.000'N 083° 05.717'W
42° 17.017'N 083° 05.750'W
42° 17.100'N 083° 05.667'W

Unauthorized entry prohibited.

(NW-C-0151-22)

***614(T)/22 Canal de la Rive Sud – Bridge Repair Work**

Reference chart: 1429

Repair work in progress at the Honoré-Mercier Bridge (upstream) between Lasalle and Kahnawake. Bridge deck installed under the bridge span.

(NW-Q-1810-19)

***615(T)/22 Canal de la Rive Sud – Bridge Demolition**

Reference chart: 1429

Demolition work on the old Champlain Bridge in progress. Tugs, workboats, and barges on site.

(NW-Q-0204-21)

***616(T)/22 Canal de la Rive Sud – Federal Wharf Permanently Closed to Navigation**

Reference chart: 1429

The Lachine Port de Plaisance Marina is permanently closed. Services are no longer available to all pleasure crafts. Access to the navigational channel and canal is not affected.

Mooring prohibited.

(NW-Q-0356-22)

***617(T)/22 Lac Saint-Louis – Aids to Navigation Temporarily Established**

Reference chart: 1430

Six yellow lighted buoys marking a 400 metres breakwater awash temporarily established at the following coordinates:

45° 20' 44.5"N 073° 50' 32.9"W	45° 21' 00.3"N 073° 50' 11.6"W
45° 20' 47.7"N 073° 50' 29.4"W	45° 21' 05.4"N 073° 50' 07.6"W
45° 20' 50.0"N 073° 50' 24.1"W	45° 21' 11.8"N 073° 50' 04.6"W

(NW-Q-0579-22)

***618(T)/22 Point Clark to/à Southampton – Aids to Navigation Established**

Reference: Notice 1212(T)/21 is cancelled.

Reference chart: 2291

Twenty-two sub-surface moorings have been removed and replaced by spar buoys at the following coordinates:

44° 13.912'N 081° 37.060'W	44° 22.719'N 081° 32.404'W
44° 13.970'N 081° 37.379'W	44° 22.933'N 081° 33.992'W
44° 13.981'N 081° 38.188'W	44° 23.512'N 081° 31.893'W
44° 15.862'N 081° 36.683'W	44° 23.953'N 081° 32.850'W
44° 15.894'N 081° 37.028'W	44° 25.270'N 081° 29.521'W
44° 15.885'N 081° 37.468'W	44° 25.576'N 081° 30.070'W
44° 19.834'N 081° 36.316'W	44° 26.041'N 081° 30.817'W
44° 19.867'N 081° 36.618'W	44° 33.449'N 081° 19.640'W
44° 21.668'N 081° 34.609'W	44° 33.525'N 081° 19.847'W
44° 22.055'N 081° 34.987'W	44° 34.184'N 081° 21.275'W

(NW-C-0708-22)

***813(T)/22 Lac Saint-Louis – Obstruction: Rock**

Reference chart: 1430

Uncharted rock with 30 centimetres protruding above the surface reported at 45° 25.062'N 073° 52.098'W.

(NW-Q-0813-22)

Preliminary Notices

Central Region

Comment Submission

Comments on proposed changes in preliminary (P) notices are solicited from mariners and other interested parties within three months of the initial publication date. Following this date, the notices will be cancelled. Any objections raised must state the facts on which they are based and should include supporting information on safety, commerce and public benefit.

Comments should be directed to the following:

Superintendent, Mathieu Roy
Aids to Navigation & Waterways
Canadian Coast Guard, Central Region
1550 D'Estimauville Avenue
Québec, QC G1J 5E9
Telephone: (418) 648-7450
Email: mathieu.roy@dfo-mpo.gc.ca

***814(P)/22 Lake Nipissing / Lac Nipissing (Eastern Portion / Partie est) – Unlit Buoy to be Discontinued**

Reference chart: 6035

The Canadian Coast Guard proposes to permanently discontinue the following aid to navigation:

Aid Name	LL #	Position
Buoy K8	9327	46° 14' 48.7"N 079° 25' 03.6"W

Initial publication date: Friday, August 26, 2022

Comment submission deadline: Thursday, November 24, 2022

(D2022-030)

***815(P)/22 Iron Island to/à West Bay – Range Lights to be Discontinued**

Reference chart: 6037

The Canadian Coast Guard proposes to permanently discontinue the following aids to navigation:

Aid Name	LL #	Position
Sturgeon River front range	1442	46° 19' 11.0"N 079° 58' 05.0"W
Sturgeon River rear range	1443	308°30' 466 m from front

Initial publication date: Friday, August 26, 2022

[Comment submission deadline](#): Thursday, November 24, 2022

(D2022-027)

Pacific Coast

Temporary Notices

***610(T)/21 Laredo Sound – Trial AIS Unit Installed**

Reference chart: 3980

Jaffrey Rock light and whistle buoy E64 (LL 622- MMSI 993161103) has been equipped with AIS Aids to Navigation System, providing position information. This system is part of a Canadian Coast Guard trial.

Please visit <http://www.marinfo.gc.ca/e-nav/> for more information about the trial.

Mariners are encouraged to submit their comments to Prince Rupert MCTS Centre

(P2021-013)

***811(T)/21 Plans - Stuart Channel – Marine Works**

Reference chart: 3475

Log booming at 48° 59.672'N 123° 48.201'W to 49° 00.551'N 123° 49.510'W.

Hours of operation are Monday to Friday from 1300UTC until 0100UTC.

Caution. Minimum wake during hours of operation.

(NW-P-1003-21)

Preliminary Notices

Western Region

Comment Submission

Comments on proposed changes in preliminary (P) notices are solicited from mariners and other interested parties within three months of the initial publication date. Following this date, the notices will be cancelled. Any objections raised must state the facts on which they are based and should include supporting information on safety, commerce and public benefit.

Comments should be directed to the following:

Superintendent, Glenna Evans
Aids to Navigation & Waterways
Canadian Coast Guard, Western Region
25 Huron Street
Victoria, BC V8V 4V9
Telephone: (250) 480-2602
Fax: (250) 480-2702
Email: glenna.evans@dfo-mpo.gc.ca

No notices applicable for this edition.

Other (T) & (P) Notices

Temporary Notices

***1105(T)/15 Canada – Safety of Offshore Exploration and Exploitation Vessels**

Reference: Notice 410(T)/2007 is cancelled.

2015 Annual Edition of Notices to Mariners, Notice No. 20, pages A20-1 to A20-4.

Mariners are advised that offshore exploration and exploitation vessels may be conducting drilling operations in the following areas:

Gulf of St. Lawrence

NIL

Mainland NWT

NIL

Mackenzie Delta NWT/Beaufort Sea

NIL

Arctic Islands of the NWT/Arctic Islands of Nunavut

NIL

Eastern Arctic Offshore

NIL

Davis Strait

NIL

NOTE: Mariners are advised to obtain up-to-date position reports on drilling vessels and production installations before entering an area of exploration and exploitation. This information is available by contacting, as appropriate, ECAREG CANADA, NORDREG CANADA or CVTS OFFSHORE via any Marine Communications and Traffic Services Centre (MCTS).

(NOTSHIP M2215/15) (NEB)

***208(T)/21 Canadian Coast Guard – Automatic Identification System (AIS)**

Reference: Notice *819(T)/16 is cancelled.

AIS Aids to Navigation (AtoNs)

Mariners are advised that the Canadian Coast Guard (CCG) is continuing to conduct supervised test beds of AIS AtoNs, with the objective of bringing AIS AtoNs to Full Operational Capability (FOC). Specific information on AIS AtoN test bed sites can be found on the CCG e-Navigation Maritime Information Portal at <http://www.marinfo.gc.ca/e-nav/docs/ais-aton-locations-eng.php>.

Although AIS was originally developed as a collision avoidance tool for vessels, it also allows for the broadcasting of other types of data, such as the AIS AtoN “Message 21” (AIS AtoN Report).

Ships need to be equipped with standard shipborne AIS equipment for the display of AIS messages. The IMO mandatory carriage requirement for the Class “A” AIS display is the Minimum Keyboard Display (MKD), however, the display and use of the AtoN information may require additional hardware and/or software such as an AIS-connected Electronic Chart Display and Information System (ECDIS), Electronic Chart System (ECS), Radar or Portable Pilot Unit (PPU).

As the AIS information available to mariners will be dependent on their display system and its compliance with the latest IMO and IALA standards, some transmitted information may not be displayed or may have a different symbol. Mariners are encouraged to install and upgrade systems that provide AIS overlay on ECDIS, ECS and/or Radar. Mariners should be familiar with the display settings on their vessel's shipborne equipment.

All geographical positions (latitude and longitude) are based on the WGS 84 datum; time is displayed in Coordinated Universal Time (UTC).

CCG is making every effort to broadcast quality information; however, as with any navigational tool, mariners should not rely on this information as their sole means of navigation.

Mariners are advised to consult the CCG e-Navigation web page on AIS AtoN, accessible at <http://www.marinfo.gc.ca/e-nav/docs/ais-aton-index-eng.php> for pertinent information, including examples of AIS AtoN display and symbology.

Individual NAVWARNs and/or NOTMARs are rarely issued for AIS AtoN trials.

Mariners are requested to provide feedback on the AIS AtoN test beds to the CCG e-Navigation Team at ccg.enav.gcc@dfo-mpo.gc.ca. In addition, mariners who wish to participate in CCG's questionnaire on AIS AtoN are invited to access it at <http://www.marinfo.gc.ca/e-nav/docs/asm-aton-survey-eng.php>. The collected results will guide the CCG in further developing this information service.

Preliminary Notices

***816(P)/22 Canadian Hydrographic Service – Raster Navigational Charts to be Discontinued**

The Canadian Hydrographic Service (CHS) has commenced the discontinuation, in progressive phases, of all of its digital Raster Navigational Charts (RNC) offered in BSB format.

CHS will support Global Navigation Satellite System (GNSS) users by offering Electronic Navigational Charts (ENC) in S-57 format, as well as non-GNSS users by continuing to offer Paper Charts.

To learn more about the advantages of ENC over RNC, please visit <https://charts.gc.ca/charts-cartes/digital-electronique/raster-enc-eng.html>.

Charts to be cancelled in the second phase of this initiative are listed below.

Comments on this action are solicited from mariners and other interested parties by Thursday, November 24, 2022, three months following the initial publication date of Friday, August 26, 2022. Following this date, this notice will be cancelled.

Any objections raised must state the facts on which they are based and should include supporting information on safety, commerce and public benefit.

Comments should be directed to the following email address: chsinfo@dfo-mpo.gc.ca.

Notices to Mariners – Monthly Summary of Temporary and Preliminary Notices
Other (T) & (P) Notices

BSB Chart	Title	BSB Chart	Title
RM-1400	Montréal to/à Lake/Lac Ontario	RM-2235	Cape Hurd to/à Lonely Island
RM-1431	Canal de Beauharnois	RM-2241	Port Severn to/à Christian Island
RM-1432	Lac Saint-François/Lake St. Francis	RM-2242	Giants Tomb Island to/à Franklin Island
RM-1433	Île St-Régis to/à Croil Islands	RM-2250	Bruce Mines to/à Sugar Island
RM-1434	Croil Islands to/à Cardinal	RM-2260	Sarnia to/à Bayfield
RM-1435	Cardinal to/à Whaleback Shoal	RM-2261	Bayfield to/à Douglas Point
RM-1436	Whaleback Shoal to/au Summerland Group	RM-2266	Michael's Bay to/à Great Duck Island
RM-1437	Summerland Group to/à Grindstone Island	RM-2267	Great Duck Island to/à False Detour Passage
RM-1438	Grindstone Island to/à Carleton Island	RM-2273	South Baymouth Harbour and Approaches
RM-1439	Carleton Island to/au Charity Shoal	RM-2274	Cape Hurd to/à Tobermory and/et Cove Island
RM-2011	Belleville Harbour	RM-2283	Owen Sound to/à Giant's Tomb Island
RM-2017	Kingston Harbour and Approaches/et les approches	RM-2291	Point Clark to/à Southampton
RM-2018	Lower Gap to/à Adolphus Reach	RM-2292	Chantry Island to Cove Island
RM-2019	Adolphus Reach to/à Big Bay	RM-2314	Port of Thunder Bay
RM-2020	Belleville to/à Presqu'île Bay	RM-3475	Plans – Stuart Channel
RM-2042	Welland Canal St.Catharines to/à Port Colborne	RM-3477	Plans – Gulf Islands
RM-2047	Clarkson Harbour	RM-3478	Plans – Saltspring Island
RM-2050	Oshawa Harbour	RM-3479	Approaches to/Approches à Sidney
RM-2060	Main Duck Island to/à Scotch Bonnet Island	RM-3552	Seymour Inlet and/et Belize Inlet
RM-2067	Hamilton Harbour	RM-3554	Plans – Desolation Sound
RM-2077	Lake Ontario/Lac Ontario (Western Portion/Partie Ouest)	RM-3623	Kyuquot Sound to/à Cape Cook
RM-2085	Toronto Harbour	RM-3624	Cape Cook to Cape Scott
RM-2086	Toronto to/à Hamilton	RM-3670	Broken Group
RM-2110	Long Point Bay	RM-3673	Clayoquot Sound, Tofino Inlet to/à Millar Channel
RM-2120	Niagara River to/à Long Point	RM-3679	Quatsino Sound
RM-2121	Long Point to/à Port Glasgow	RM-3685	Tofino
RM-2122	Pointe aux Pins to/à Point Pelee	RM-3686	Approaches to/Approches à Winter Harbour
RM-2123	Pelee Passage to/à la Detroit River	RM-3795	Langley Passage, Estevan Group
RM-2181	Harbours in Lake Erie/Havres dans le lac Érié	RM-3909	Plans – Chatham Sound
RM-2205	Killarney to/à Little Current	RM-3910	Plans – Milbanke Sound and/et Beauchemin Channel
RM-2224	Rose Island to/à Parry Sound	RM-3911	Plans – Vicinity of/Proximité de Princess Royal Island
RM-2228	Lake Huron/Lac Huron (Southern Portion/Partie sud)	RM-3912	Plans, Vicinity of/Proximité de Banks Island

Notices to Mariners – Monthly Summary of Temporary and Preliminary Notices
Other (T) & (P) Notices

BSB Chart	Title	BSB Chart	Title
RM-3920	Nass Bay, Alice Arm and Approaches/et les approches	RM-4823	Cape Ray to / à Garia Bay
RM-3921	Fish Egg Inlet and/et Allison Harbour	RM-4824	Garia Bay to / à Burgeo
RM-3931	Smith Inlet, Boswell Inlet and/et Draney Inlet	RM-4825	Burgeo and / et Ramea Islands
RM-3932	Rivers Inlet	RM-4826	Burgeo to / à François
RM-3934	Approaches to/Approches à Smith Sound and/et Rivers Inlet	RM-4827	Hare Bay to / à Fortune Head
RM-3944	Princess Royal Channel	RM-4830	Great Bay de l'Eau and Approaches / et les approches
RM-4010	Bay of Fundy / Baie de Fundy: Inner portion / partie intérieure	RM-4831	Fortune Bay: Northern Portion / Partie Nord
RM-4012	Yarmouth to / à Halifax	RM-4832	Fortune Bay: Southern Portion / Partie Sud
RM-4115	Passamaquoddy Bay and / et St. Croix River	RM-4839	Head of / Fond de Placentia Bay
RM-4116	Approaches to / Approches à Saint John	RM-4841	Cape St Mary's to / à Argentinia
RM-4118	St. Marys Bay	RM-4842	Cape Pine to / au Cape St Mary's
RM-4209	Lockeport Harbour and / et Shelburne Harbour	RM-4843	Head of / Fond de St Mary's Bay
RM-4210	Cape Sable to / à Pubnico Harbour	RM-4844	Cape Pine to / à Renews Harbour
RM-4233	Cape Canso to / à Country Island	RM-4846	Motion Bay to / à Cape St Francis
RM-4234	Country Island to / à Barren Island	RM-4847	Conception Bay
RM-4235	Barren Island to / à Taylors Head	RM-4848	Holyrood and / et Long Pond
RM-4236	Taylors Head to / à Shut-in Island	RM-4849	Plans, Conception Bay, Trinity Bay and / et Bonavista Harbour
RM-4237	Approaches to / Approches de Halifax Harbour	RM-4850	Cape St Francis to / à Baccalieu Island and / et Heart's Content
RM-4240	Liverpool Harbour to / à Lockeport Harbour	RM-4851	Trinity Bay: Southern Portion / Partie Sud
RM-4243	Tusket Islands to / à Cape St Marys	RM-4852	Smith Sound and / et Random Sound
RM-4342	Grand Manan (Harbours / Havres)	RM-4853	Trinity Bay: Northern Portion / Partie Nord
RM-4381	Mahone Bay	RM-4854	Catalina Harbour to / à Inner Gooseberry Islands
RM-4396	Annapolis Basin	RM-4855	Bonavista Bay: Southern Portion / Partie sud
RM-4530	Hamilton Sound: Eastern Portion / Partie-est	RM-4856	Bonavista Bay: Western Portion / Partie ouest
RM-4617	Red Island to / à Pinchgut Point	RM-4857	Indian Bay to / à Wadham Islands
RM-4644	Bay D'Espoir and / et Hermitage Bay	RM-4861	Fogo Island Northern Portion / Partie Nord
RM-4653	Bay of Islands	RM-4862	Carmanville to / à Bacalhoa Island and / et Fogo
RM-4722	Terrington Basin	RM-4863	Bacalhao Island to / à Black Island

Notices to Mariners – Monthly Summary of Temporary and Preliminary Notices
Other (T) & (P) Notices

BSB Chart	Title	BSB Chart	Title
RM-4865	Approaches to / Approches à Lewisporte and / et Loon Bay	RM-5055	Cape Kiglapait to / à Khikkertarsoak North Island
RM-4866	Botwood and Approaches / et les approches	RM-5056	Khikkertarsoak North Island to / à Morhardt Point
RM-4881	Gregory Island to Rocky Harbour	RM-5057	Hare Islands to / à North Head
RM-4886	Twillingate Harbours	RM-5058	North Head to / à Murphy Head
RM-4940	Northumberland Strait Central Portion - Ports/Harbours	RM-5059	Saglek Bay
RM-5030	Green Bay to / à Double Island	RM-5060	Cape Daly to / à Amiktok Island
RM-5031	St. Lewis Sound and / et Inlet	RM-5061	Amiktok Island to / à Osborne Point
RM-5032	Approaches to / à White Bear Arm	RM-5062	Osborne Point to / à Cape Kakkiviak
RM-5033	Hawke Bay and / et Squasho Run	RM-5063	Cape Kakkiviak to / à Duck Islands
RM-5042	Cut Throat Island to / à Quaker Hat	RM-5064	McLelan Strait
RM-5043	Quaker Hat to / à Cape Harrison	RM-5065	Gray Strait and / et Button Islands
RM-5044	Cape Harrison to / à Dog Islands	RM-5070	Satsoak Island to / à Akuliakatak Peninsula
RM-5045	Dog Islands to / à Cape Makkovik	RM-5133	Domino Point to / à Cape North
RM-5046	Kaipokok Bay and Cape Makkovik to / à Winsor Harbour Island	RM-5134	Approaches to / Approches À Cartwright: Black Island to / à Tumbledown Dick Island
RM-5047	Winsor Harbour Island to / aux Kikkertaksoak Islands	RM-5135	Approaches to / Approches À Hamilton Inlet
RM-5048	Cape Harrigan to / aux Kidlit Islands	RM-5138	Sandwich Bay
RM-5049	Davis Inlet to / aux Seniartlit Islands	RM-5162	Groswater Bay
RM-5051	Nunaksuk Island to / aux Calf Cow and / et Bull Islands	RM-5163	Ticoralak Head to/à Green Island
RM-5052	Seniartlit Islands to / à Nain	RM-5164	Lake Melville
RM-5054	South Auliatsivik Island to / à Fenstone Tickle Island	RM-5165	Epinette Point to/à Terrington Basin