



Fisheries and Oceans  
Canada

Pêches et Océans  
Canada

Canadian  
Coast Guard

Garde côtière  
canadienne

# Notices to Mariners

**Edition No. 06/2023**  
**June 30, 2023**



Safety First, Service Always

## **Monthly Summary of Temporary and Preliminary Notices**

Canada 

Notices to Mariners – Monthly Summary of Temporary and Preliminary Notices  
Edition No. 06/2023

Aussi disponible en français :  
Avis aux navigateurs – Sommaire mensuel des avis temporaires et préliminaires  
Édition n° 06/2023

**Published under the Authority of:**

Canadian Coast Guard Programs  
Aids to Navigation and Waterways  
Fisheries and Oceans Canada  
Montreal, QC H2Y 2E7

For more information, contact [Notmar.XNCR@dfo-mpo.gc.ca](mailto:Notmar.XNCR@dfo-mpo.gc.ca).

© His Majesty the King in Right of Canada,  
as represented by the Minister of Fisheries, Oceans  
and the Canadian Coast Guard, 2023.

Cat. No. Fs151-19E-PDF (Electronic PDF, English)  
ISSN 2561-5106

Cat. No. Fs151-19F-PDF (Electronic PDF, French)  
ISSN 2561-5114

A web version is available here:

<https://www.notmar.gc.ca/temp-pre-monthly> (English)

<https://www.notmar.gc.ca/temp-pre-mensuel> (French)

## Explanatory Notes

**Geographical positions** refer directly to the graduations of the largest scale Canadian Hydrographic Service chart (unless otherwise indicated).

**Bearings** refer to the true compass and are measured clockwise from 000° (North) clockwise to 359°; those relating to lights are from seaward.

**Visibility** of lights is that in clear weather.

**Depths** - The units used for soundings (metres, fathoms or feet) are stated in the title of each chart.

**Elevations** are normally given above Higher High Water, Large Tide (unless otherwise indicated).

### Explanation of Temporary and Preliminary Notices to Mariners

Certain Notices to Mariners appearing in the monthly editions have a (T) or (P) appended to the regular number. These letters indicate that the information contained in the notice is of a temporary or preliminary nature, respectively.

#### Temporary (T) Notices

If a temporary change in conditions affecting navigation exists and if the change will be effective for a period of over three months, a temporary (T) notice will be published. Temporary changes which are effective for periods of less than three months will not normally be published (unless it is of exceptional interest). Otherwise, information will be promulgated as a Navigational Warning (NAVWARN) by the Canadian Coast Guard Marine Communications and Traffic Services (MCTS) Centre(s) in the affected area. (T) notices will be cancelled as necessary.

Please note that (T) notices with an end date will be automatically cancelled once the end date has passed. In the event of a change to these notices, a new Notice to Mariners will be issued.

#### Preliminary (P) Notices

- a. When important changes affecting navigation are to take place in the near future, a Notice to Mariners describing the change will be published, so that mariners will have advance information on the change. Such notices will be designated (P).
- b. When a change in conditions affecting navigation has taken place but full information is not available, a preliminary (P) notice giving available information will be published. This notice will be followed by a regular notice when complete information becomes available. The regular notice will cancel the (P) notice.
- c. When a change has taken place which is too complex to describe in a written notice, a (P) notice giving general information will be published. This notice will explain that follow up action will be taken to update charts by publishing patch corrections, new editions or new charts.

Please note that following the expiry of the 90-day comment or objection period, (P) notices describing proposed changes or intention to discontinue will be automatically cancelled. In the event of a change to these notices, a new Notice to Mariners will be issued.

#### Action Required on Receipt Of (T) & (P) Notices

It is not customary to make permanent corrections to charts and publications from (T) & (P) notices. On receipt of such notices, the information they contain should be noted in pencil on the affected charts and/or publications.

#### Caution

Mariners are reminded that charts and publications are not corrected from (T) & (P) notices when purchased from suppliers. For the list of charts affected by (T) & (P) notices, please refer to the index on page ii of this publication.

## Table of Contents

---

### **Newfoundland and Labrador Coast** **1**

---

#### Temporary Notices

*1111(T)/22	Seniartlit Islands to / à Nain – Waterway Information.....	1
-------------	--	---

#### Preliminary Notices

*410(P)/23	Tilt Cove and / et La Scie Harbour – Aid to Navigation to be Discontinued.....	1
*609(P)/23	Smith Sound and / et Random Sound – Aid to Navigation to be Discontinued .....	1
*610(P)/23	Indian Bay to / à Wadham Islands – Aid to Navigation to be Discontinued .....	2
*611(P)/23	Carmanville to / à Bacalhoa Island and / et Fogo – Fog Signal to be Discontinued .....	2

---

### **Atlantic Coast** **3**

---

#### Temporary Notices

*111(T)/21	Rivière des Prairies – Construction Operations.....	3
*206(T)/21	Plans, Baie des Chaleurs/Chaleur Bay (côte nord/north shore) – Federal Wharf Closed to Navigation .....	3
*318(T)/21	Pointe des Monts aux/to Escoumins – Scientific Moorings .....	3
*207(T)/22	Port de Québec – Obstruction .....	3
*307(T)/22	Port de Québec – Waterway Information.....	3
*411(T)/22	Lac Saint-Pierre – Obstruction: Floating and Falling Debris .....	4
*709(T)/22	Port de Québec – Bridge Lights Temporarily Unlit .....	4
*809(T)/22	Port de Montréal – Waterway Information: Calculation of Under-Keel Clearance .....	4
*810(T)/22	Île du Petit Mécatina aux/to Îles Sainte-Marie – Waterway Information: Shoal .....	4
*811(T)/22	Cap-aux-Meules – Waterway Information: Restrictions .....	5
*1009(T)/22	Plans, Baie des Chaleurs/Chaleur Bay (côte nord/North Shore) – Waterway Information: Shallow Depths Reported .....	5
*1114(T)/22	Rivière-du-Loup – Waterway Information: Shallow Depths Reported.....	5
*1214(T)/22	Cap des Rosiers à/to Chandler – Obstruction: Sunken Barge and Excavator.....	5
*107(T)/23	Sable Island Bank / Banc de l'Île de Sable to / au St. Pierre Bank / Banc de Saint-Pierre – ODAS Buoy Unlit.....	5
*313(T)/23	Batiscan au/to Lac Saint-Pierre – Waterway Information: Shallow Depth Reported .....	6
*314(T)/23	Approaches to / Approches à Bay of Fundy / Baie de Fundy – Obstruction : Scientific Moorings.....	6
*315(T)/23	Georges Bank / Banc de Georges: Eastern Portion / Partie Est – Obstruction : Scientific Moorings.....	6
*316(T)/23	Havre de Gaspé – Caution Concerning Aquaculture Sites .....	7
*317(T)/23	Baie des Chaleurs / Chaleur Bay – Caution Concerning Aquaculture Sites.....	8
*318(T)/23	Plans, Baie des Chaleurs/Chaleur Bay (côte nord/North Shore) – Caution Concerning Aquaculture Sites .....	8
*509(T)/23	St. Marys Bay – Obstruction : Wreck.....	9

#### Preliminary Notices

*412(P)/23	Baie des Chaleurs / Chaleur Bay – Notice of Proposed Changes .....	9
------------	--	---

*413(P)/23	Caraquet Harbour, Baie de Shippegan and / et Miscou Harbour – Notice of Proposed Changes .....	10
*414(P)/23	Plans Baie des Chaleurs / Chaleur Bay - Côte sud / South Shore – Notice of Proposed Changes .....	10
*612(P)/23	Great Bras D'Or, St. Andrews Channel and/et St. Anns Bay – Notice of Proposed Changes .....	11

<b>Inland Waters</b>	<b>12</b>
----------------------	-----------

**Temporary Notices**

*909(T)/14	Kingston Harbour and Approaches/et les approches – Dock Unserviceable .....	12
*515(T)/16	Harbours on the East Shore of Lake Superior/Ports sur la rive est du lac Supérieur – Buoys Temporarily Discontinued .....	12
*814(T)/16	Main Duck Island to/à Scotch Bonnet Island – Partially Submerged Fixed Steel Barges	12
*1011(T)/16	Lake Ontario/Lac Ontario (Western Portion/Partie Ouest) – Silting Reported .....	12
*1218(T)/16	Hamilton Harbour – Silting Reported .....	12
*1219(T)/16	Toronto to/à Hamilton – Construction Operations .....	13
*108(T)/17	Harbours in Lake Erie/Havres dans le lac Érié – Unlit Buoys Temporarily Repositioned.	13
*309(T)/17	Pelee Passage to/à la Detroit River – Low Water Levels Reported .....	13
*1206(T)/17	Lake Rosseau and/et Lake Joseph – Unlit Buoy Temporary Established .....	13
*709(T)/18	Kingston Harbour and Approaches/et les approches – Information Regarding Mooring and Anchoring .....	14
*710(T)/20	Murray Canal to Healey Falls Locks / Murray Canal aux Écluses de Healey Falls – Construction Operations .....	14
*1012(T)/20	Kingston Harbour and Approaches/et les approches – Construction Operations.....	14
*1210(T)/20	Demarcation Bay to/à Philips Bay – Mobile Offshore Drilling Unit Temporarily Established.....	14
*112(T)/21	Upper Gap to/à Telegraph Narrows – Construction Operations .....	14
*413(T)/21	Kingston Harbour and Approaches/et les approches – Aid to Navigation Temporarily Unlit .....	15
*810(T)/21	Fort Frances to/à Hostess Island and/et Sandpoint Island – Aids to Navigation Temporarily Discontinued .....	15
*907(T)/21	Lac des Deux Montagnes – Missing Unlit Buoy .....	15
*107(T)/22	Canal de la Rive Sud – Waterways Information .....	15
*108(T)/22	Lower Gap to/à Adolphus Reach – Construction Operations Frontenac II Ferry Dock .	15
*413(T)/22	Detroit River – Waterway Information: Bridge Construction.....	16
*614(T)/22	Canal de la Rive Sud – Bridge Repair Work.....	16
*615(T)/22	Canal de la Rive Sud – Bridge Demolition.....	16
*616(T)/22	Canal de la Rive Sud – Federal Wharf Permanently Closed to Navigation .....	16
*617(T)/22	Lac Saint-Louis – Aids to Navigation Temporarily Established .....	16
*618(T)/22	Point Clark to/à Southampton – Aids to Navigation Established.....	17
*109(T)/23	Port Hope Harbour – Dredging Operations .....	17
*415(T)/23	Toronto Harbour – Marine Works - Overhead Construction.....	17
*512(T)/23	Toronto Harbour – Construction Operations.....	18
*613(T)/23	Ottawa to/à Smiths Falls – Marine Works – Bridge Repair .....	18

Preliminary Notices

No notices applicable for this edition. .... 19

---

**Pacific Coast** **20**

Temporary Notices

No notices applicable for this edition. .... 20

Preliminary Notices

No notices applicable for this edition. .... 20

---

**Other (T) & (P) Notices** **21**

Temporary Notices

\*1105(T)/15 Canada – Safety of Offshore Exploration and Exploitation Vessels ..... 21

\*111(T)/23 Canadian Coast Guard – Automatic Identification System (AIS) ..... 21

Preliminary Notices

No notices applicable for this edition. .... 22

### List of Charts Affected by (T) & (P) Notices

Chart No.	Pages	Chart No.	Pages	Chart No.	Pages
1234	5	2060	12	4522	1
1236	3	2067	12	4852	1
1310	4	2077	12	4857	2
1312	4	2085	17, 18	4862	2
1313	6	2086	13	4913	10
1316	3, 4	2123	13	4920	10
1320	5	2181	13	4921	3, 5, 8
1429	15, 16	2291	17	4956	5
1430	16	2315	12	5052	1
1509	3	4011	6	6022	13
1510	15	4045	5	6108	15
1512	18	4118	9	7661	14
1515	18	4255	6	14853 (U.S.)	16
2006	14	4277	11		
2017	12, 14, 15	4416	7		
2018	15	4468	4		
2021	14	4485	5		
2053	17	4486	8, 9		

## Newfoundland and Labrador Coast

### Temporary Notices

#### \*1111(T)/22 Seniartlit Islands to / à Nain – Waterway Information

Reference chart: 5052

Tide Gauge 01430 located at Nain is undergoing maintenance. Observation and forecast data unavailable, however, prediction data still available.

(NW-N-1555-22)

### Preliminary Notices

#### Atlantic Region

##### Comment Submission

Comments on proposed changes in preliminary (P) notices are solicited from mariners and other interested parties within three months of the initial publication date. Following this date, the notices will be cancelled. Any objections raised must state the facts on which they are based and should include supporting information on safety, commerce and public benefit.

Comments should be directed to the following:

Superintendent,  
Aids to Navigation & Waterways  
Canadian Coast Guard, Atlantic Region  
P.O. Box 1000  
50 Discovery Drive  
Dartmouth, NS B2Y 3Z8  
Telephone: (506) 636-4708  
Email: [DFO.CCGATLaidstoNavDiscont-AidesalanavSupprATLGCC.MPO@dfo-mpo.gc.ca](mailto:DFO.CCGATLaidstoNavDiscont-AidesalanavSupprATLGCC.MPO@dfo-mpo.gc.ca)

#### \*410(P)/23 Tilt Cove and / et La Scie Harbour – Aid to Navigation to be Discontinued

Reference chart: 4522

The Canadian Coast Guard proposes to permanently discontinue the following aid to navigation:

Aid Name	LL #	Position
La Scie Harbour Floating Dock	267.2	49° 57' 35.4"N 055° 36' 05.6"W

Initial publication date: Friday, April 28, 2023

[Comment submission deadline](#): Thursday, July 27, 2023

(N2023-060)

#### \*609(P)/23 Smith Sound and / et Random Sound – Aid to Navigation to be Discontinued

Reference chart: 4852

The Canadian Coast Guard proposes to permanently discontinue the following aid to navigation:

Aid Name	LL #	Position
Petley Wharf	466.8	48° 09' 15.8"N 053° 44' 41.3"W

Initial publication date: Friday, June 30, 2023

[Comment submission deadline](#): Thursday, September 28, 2023

(N2023-074)



**\*610(P)/23 Indian Bay to / à Wadham Islands – Aid to Navigation to be Discontinued**

Reference chart: 4857

The Canadian Coast Guard proposes to permanently discontinue the following aid to navigation:

Aid Name	LL #	Position
Pound Cove	421	49° 10' 17.3"N 053° 31' 49.5"W

Initial publication date: Friday, June 30, 2023

[Comment submission deadline](#): Thursday, September 28, 2023

(N2023-073)

**\*611(P)/23 Carmanville to / à Bacalhoa Island and / et Fogo – Fog Signal to be Discontinued**

Reference chart: 4862

The Canadian Coast Guard proposes to permanently discontinue the fog signal from the following aid to navigation:

Aid Name	LL #	Position
Bacalhao Island	363	49° 41' 12.8"N 054° 33' 24.6"W

Initial publication date: Friday, June 30, 2023

[Comment submission deadline](#): Thursday, September 28, 2023

(N2023-087)

## Atlantic Coast

### Temporary Notices

#### **\*111(T)/21 Rivière des Prairies – Construction Operations**

Reference chart: 1509

Repair work is taking place 24 hours a day at the Pie-IX bridge as of August 17<sup>th</sup>, 2020.

Buoys, jetties, and a turbidity curtain are in place.

(NW-Q-1112-20)

#### **\*206(T)/21 Plans, Baie des Chaleurs/Chaleur Bay (côte nord/north shore) – Federal Wharf Closed to Navigation**

Reference: Notice \*1118/19 is cancelled.

Reference chart: 4921

The federal wharf at Chandler is closed to navigation. For safety reasons, it is not permitted to berth at the wharf.

For more information, please contact Mr. Simon Bilodeau at Transport Canada at 418-563-2325 or by email at the following address: [simon.bilodeau@tc.gc.ca](mailto:simon.bilodeau@tc.gc.ca).

(NAVWARN NW-Q-1580-16)

#### **\*318(T)/21 Pointe des Monts aux/to Escoumins – Scientific Moorings**

Reference chart: 1236

Over 80 underwater scientific moorings have been placed in the area delimited by the following positions:

Pt 1:	49° 18' 00.7"N	067° 40' 03.6"W
Pt 2:	49° 18' 12.0"N	067° 43' 30.8"W
Pt 3:	49° 17' 31.3"N	067° 43' 32.4"W
Pt 4:	49° 17' 25.3"N	067° 40' 15.5"W

(NW-Q-0968-20)

#### **\*207(T)/22 Port de Québec – Obstruction**

Reference chart: 1316

Power boat 6 metres in length reported sunk at 46° 43.830'N 071° 20.000'W.

(NW-Q-1348-21)

#### **\*307(T)/22 Port de Québec – Waterway Information**

Reference chart: 1316

Repair work with scaffolding taking place on the Pierre-Laporte bridge Monday to Saturday. Bridge clearance reduced by 2.6 metres.

(NW-Q-0182-22)

**\*411(T)/22 Lac Saint-Pierre – Obstruction: Floating and Falling Debris**

Reference chart: 1312

Floating and falling debris reported beneath the bridge located at 46° 04.783'N 073° 09.205'W. The bridge is marked with yellow buoys suspended at mid-height between the deck and the water level. Warning signs installed above.

(NW-Q-1266-19)

**\*709(T)/22 Port de Québec – Bridge Lights Temporarily Unlit**

Reference chart: 1316

The following four red lights, located on the Pierre-Laporte bridge, are temporarily unlit:

Pont Pierre-Laporte Northeast Light	46° 44.815'N 071° 17.480'W
Pont Pierre-Laporte Northwest Light	46° 44.809'N 071° 17.502'W
Pont Pierre-Laporte Southeast Light	46° 44.629'N 071° 17.368'W
Pont Pierre-Laporte Southwest Light	46° 44.622'N 071° 17.390'W

(NW-Q-1281-21, NW-Q-1282-21, NW-Q-1283-21, NW-Q-1284-21)

**\*809(T)/22 Port de Montréal – Waterway Information: Calculation of Under-Keel Clearance**

Reference chart: 1310

Canadian Coast Guard Marine Communications and Traffic Services has been using all Canadian Hydrographic Service water-level stations for the calculation of passage authorizations in the Sorel–Montreal sector of the navigational waterway, namely Sorel, Contrecoeur, Varennes, Montreal-Frontenac and Montreal-Jetty No. 1.

In light of the particular features of the navigational waterway in the portion between buoys M84 (downstream of the municipality of Verchères) and M157 (opposite to the Port of Montreal, section 109) as well as the No. 1 Anchorage Pointe-aux-Tremble, it was agreed to adjust upward the available water column by 10 cm in this portion.

The minimum water column in this portion of the navigational waterway as per the Varennes hydrographic station, obtained after adjustment, will be used for the calculation of under-keel clearance.

(NW-Q-0776-22)

**\*810(T)/22 Île du Petit Mécatina aux/to Îles Sainte-Marie – Waterway Information: Shoal**

Reference chart: 4468

Rocky shoal located at the entrance to Harrington Harbour. Navigation must take place between the wharf and the red lantern at 50° 29.832'N 059° 28.581'W.

(NW-Q-1494-20)

**\*811(T)/22 Cap-aux-Meules – Waterway Information: Restrictions**

Reference chart: 4956

Restrictions in place and mooring prohibited in certain areas at the fishermen's wharf, at the port of Cap-aux-Meules.

Contact the port manager for more information at 418-937-7635.

(NW-Q-0199-21)

**\*1009(T)/22 Plans, Baie des Chaleurs/Chaleur Bay (côte nord/North Shore) – Waterway Information: Shallow Depths Reported**

Reference chart: 4921

Shallower depths located at:

48° 24' 51.8"N	064° 23' 38.9"W	(2.9 metres)
48° 24' 52.7"N	064° 23' 41.9"W	(2.9 metres)
48° 24' 55.5"N	064° 23' 45.2"W	(2.5 metres)
48° 24' 53.7"N	064° 23' 43.7"W	(2.6 metres)

(NW-Q-1485-22)

**\*1114(T)/22 Rivière-du-Loup – Waterway Information: Shallow Depths Reported**

Reference: Notice 1008(T)/22 is cancelled.

Reference chart: 1234, 1320

Shallower depths located at:

47° 55' 29.8"N	069° 38' 57.7"W	(9.7 metres)
47° 56' 58.4"N	069° 47' 24.2"W	(3.2 metres)
48° 00' 07.0"N	069° 45' 43.1"W	(8.5 metres)

(NW-Q-1058-22)

**\*1214(T)/22 Cap des Rosiers à/to Chandler – Obstruction: Sunken Barge and Excavator**

Reference chart: 4485

Sunken barge and excavator reported at 48° 35.1'N 064° 08.1'W. Barge is 18 metres by 7 metres.

(NW-Q-1709-22)

**\*107(T)/23 Sable Island Bank / Banc de l'Île de Sable to / au St. Pierre Bank / Banc de Saint-Pierre – ODAS Buoy Unlit**

Reference chart: 4045

ODAS buoy marked "44139" in 44° 14.400'N, 057° 06.180'W is unlit. Caution.

(NW-M-2321-22)

**\*313(T)/23 Batiscan au/to Lac Saint-Pierre – Waterway Information: Shallow Depth Reported**

Reference chart: 1313

A shallower depth of 10.6 metres is located at the following positions:

46° 19' 58.9"N 072° 32' 40.9"W

(NW-Q-1823-22)

**\*314(T)/23 Approaches to / Approches à Bay of Fundy / Baie de Fundy – Obstruction : Scientific Moorings**

Reference chart: 4011

Subsurface scientific equipment deployed in 42° 50.437'N 066° 43.862'W. Top of equipment is at 214 metres water depth.

(NW-M-0285-23)

**\*315(T)/23 Georges Bank / Banc de Georges: Eastern Portion / Partie Est – Obstruction : Scientific Moorings**

Reference chart: 4255

Subsurface scientific equipment deployed in 42° 18.196'N 065° 59.250'W. Top of equipment is at 234 metres water depth.

(NW-M-0284-23)

**\*316(T)/23 Havre de Gaspé – Caution Concerning Aquaculture Sites**

Reference chart: 4416

Vicinity	Positions	Description
L'Anse-aux-Cousins	48° 51' 21.2"N 064° 30' 02.6"W 48° 51' 06.2"N 064° 29' 25.6"W 48° 51' 00.2"N 064° 30' 02.6"W 48° 51' 00.2"N 064° 29' 30.6"W	Unmarked aquaculture site with submerged equipment.
Havre de Gaspé	48° 51' 50.2"N 064° 29' 02.5"W 48° 51' 20.2"N 064° 28' 37.5"W 48° 51' 20.2"N 064° 28' 16.5"W 48° 50' 47.2"N 064° 28' 16.5"W 48° 51' 23.2"N 064° 29' 40.5"W 48° 51' 23.2"N 064° 29' 20.5"W 48° 51' 30.2"N 064° 29' 02.5"W	Unmarked aquaculture site with submerged equipment.
Havre de Gaspé	48° 51' 18.5"N 064° 27' 02.5"W 48° 51' 08.8"N 064° 26' 34.6"W 48° 50' 51.1"N 064° 26' 35.4"W 48° 50' 47.2"N 064° 26' 45.5"W 48° 50' 47.2"N 064° 27' 02.5"W	Unmarked aquaculture site with submerged equipment, some of which is located outside the defined area.
Havre de Gaspé	48° 50' 25.7"N 064° 28' 24.5"W 48° 50' 51.2"N 064° 29' 28.7"W 48° 51' 03.8"N 064° 29' 16.1"W 48° 50' 37.7"N 064° 28' 12.6"W	Unmarked aquaculture site with submerged equipment.
Havre de Gaspé	48° 50' 47.2"N 064° 27' 07.5"W 48° 50' 38.6"N 064° 27' 07.5"W 48° 50' 29.4"N 064° 27' 34.1"W 48° 50' 44.9"N 064° 28' 11.5"W 48° 50' 47.1"N 064° 28' 11.3"W	Aquaculture site with non-compliant buoyage and equipment at the surface.
Havre de Gaspé	48° 51' 17.6"N 064° 28' 11.6"W 48° 51' 00.2"N 064° 28' 11.6"W 48° 51' 17.6"N 064° 27' 07.6"W 48° 51' 00.2"N 064° 27' 07.6"W	Aquaculture site with non-compliant buoyage with surface and submerged equipment.
Baie de Gaspé	48° 51' 21.2"N 064° 30' 02.6"W 48° 51' 06.2"N 064° 29' 25.6"W 48° 51' 00.2"N 064° 30' 02.6"W 48° 51' 00.2"N 064° 29' 30.6"W	Unmarked aquaculture site with submerged equipment.

(NW-Q-0732-16, NW-Q-0735-16, NW-Q-0737-16, NW-Q-0758-16,  
NW-Q-0761-16, NW-Q-0794-16, NW-Q-1719-18)

**\*317(T)/23 Baie des Chaleurs / Chaleur Bay – Caution Concerning Aquaculture Sites**

Reference chart: 4486

Vicinity	Positions	Description
Cascapedia Bay	48° 07' 10.7"N 066° 01' 18.2"W 48° 07' 31.1"N 066° 00' 30.8"W 48° 07' 00.8"N 065° 59' 59.9"W 48° 06' 39.7"N 066° 00' 47.0"W	Aquaculture site with non-compliant buoyage with surface and submerged equipment.
Cascapedia Bay	48° 07' 22.0"N 065° 55' 12.0"W 48° 07' 22.0"N 065° 53' 14.0"W 48° 06' 33.0"N 065° 53' 14.0"W 48° 06' 33.0"N 065° 55' 12.0"W	Aquaculture site with non-compliant buoyage with submerged equipment.
Cascapedia Bay	48° 05' 24.2"N 066° 01' 42.8"W 48° 06' 11.2"N 066° 00' 07.8"W 48° 05' 36.2"N 065° 59' 29.8"W 48° 04' 49.2"N 066° 01' 04.8"W	Aquaculture site marked with non-compliant buoyage with surface and submerged equipment.
Tracadigache Bay	48° 05' 12.0"N 066° 12' 02.6"W 48° 05' 12.0"N 066° 11' 00.0"W 48° 04' 30.0"N 066° 11' 00.0"W 48° 04' 30.0"N 066° 12' 02.6"W	Aquaculture site with temporarily non-compliant buoyage.

(NW-Q-0769-16, NW-Q-0770-16, NW-Q-0783-16, NW-Q-0789-16)

**\*318(T)/23 Plans, Baie des Chaleurs/Chaleur Bay (côte nord/North Shore) – Caution Concerning Aquaculture Sites**

Reference chart: 4921

Vicinity	Positions	Description
Carleton-sur-Mer	48° 05' 21.9"N 066° 01' 55.5"W 48° 04' 45.0"N 066° 01' 15.3"W 48° 04' 21.7"N 066° 02' 11.5"W 48° 04' 56.2"N 066° 02' 51.2"W	Unmarked aquaculture site with submerged equipment.
Carleton-sur-Mer	48° 05' 50.6"N 066° 02' 27.5"W 48° 05' 29.7"N 066° 02' 04.7"W 48° 05' 04.8"N 066° 03' 00.7"W 48° 05' 25.6"N 066° 03' 23.5"W	Unmarked aquaculture site with submerged equipment.
Carleton-sur-Mer	48° 06' 14.9"N 066° 00' 02.5"W 48° 05' 39.1"N 065° 59' 22.1"W 48° 06' 28.1"N 065° 57' 41.7"W 48° 07' 02.8"N 065° 58' 21.3"W	Unmarked aquaculture site with submerged equipment.

(NW-Q-1716-18, NW-Q-1717-18, NW-Q-1718-18)

**\*509(T)/23 St. Marys Bay – Obstruction : Wreck**

Reference chart: 4118

Sunken 30 by 90 feet barge with 500 feet of tow line still attached at the following position:  
44° 16' 24.9"N 066° 28' 44.9"W Caution.

(NW-M-0529-23)

**Preliminary Notices**

**Atlantic Region**

Comment Submission

Comments on proposed changes in preliminary (P) notices are solicited from mariners and other interested parties within three months of the initial publication date. Following this date, the notices will be cancelled. Any objections raised must state the facts on which they are based and should include supporting information on safety, commerce and public benefit.

Comments should be directed to the following:

Superintendent,  
Aids to Navigation & Waterways  
Canadian Coast Guard, Atlantic Region  
P.O. Box 1000  
50 Discovery Drive  
Dartmouth, NS B2Y 3Z8  
Telephone: (506) 636-4708  
Email: [DFO.CCGATLaidstoNavDiscont-AidesalanavSupprATLGCC.MPO@df-mpo.gc.ca](mailto:DFO.CCGATLaidstoNavDiscont-AidesalanavSupprATLGCC.MPO@df-mpo.gc.ca)

**\*412(P)/23 Baie des Chaleurs / Chaleur Bay – Notice of Proposed Changes**

Reference chart: 4486

The Canadian Coast Guard proposes to permanently change the following aids to navigation:

Aid Name	LL #	Position	Proposed Changes
<b>Fixed Aids</b>			
Blue Cove (Anse-Bleue) front range	1325	47° 49' 55.5"N 065° 04' 47.8"W	Change the aid type from front range to wharf light. Change lantern colour from red to green. Change flash characteristics to: Fl 1 s; Ec 5 s. Change the light operation from "Operates 24 h." to "Operates at night only." Change daymark colour to green and white.
Blue Cove (Anse-Bleue) rear range	1325.1	195° 04' 338.6 m from front	Change the aid type from rear range to landfall light. Change lantern colour from red to white. Change flash characteristics to: Fl 1 s; Ec 5 s. Change daymark colour to red, white and red.
Blue Cove (Anse-Bleue) Breakwater	1325.4	47° 49' 55.8"N 065° 04' 50.8"W	Change flash characteristics to: Fl 1 s; Ec 5 s. Add a red and white daymark.
Blue Cove (Anse-Bleue) Wharf	1325.5	47° 49' 53.7"N 065° 04' 48.8"W	Discontinue aid to navigation.

Initial publication date: Friday, April 28, 2023

[Comment submission deadline](#): Thursday, July 27, 2023

(G2023-016)



**\*413(P)/23 Caraquet Harbour, Baie de Shippegan and / et Miscou Harbour – Notice of Proposed Changes**

Reference chart: 4913

The Canadian Coast Guard proposes to permanently change the following aids to navigation:

Aid Name	LL #	Position	Proposed Changes
<b>Fixed Aids</b>			
Caraquet Island	1322	47° 49' 21.2"N 064° 54' 16.0"W	Change flash characteristics to: Fl 1 s; Ec 5 s.
Maisonnette	1324	47° 50' 15.0"N 065° 00' 13.0"W	Change flash characteristics to: Fl 2 s; Ec 4 s. Change the light operation from "Operates 24 h." to "Operates at night only." Add a red, white and red daymark.

Initial publication date: Friday, April 28, 2023

[Comment submission deadline](#): Thursday, July 27, 2023

(G2023-016)

**\*414(P)/23 Plans Baie des Chaleurs / Chaleur Bay - Côte sud / South Shore – Notice of Proposed Changes**

Reference chart: 4920

The Canadian Coast Guard proposes to permanently change the following aids to navigation:

Aid Name	LL #	Position	Proposed Changes
<b>Fixed Aids</b>			
Petit Rocher	1339	47° 46' 54.6"N 065° 42' 27.2"W	Change lantern colour from white to red. Change flash characteristics to: Fl 1 s; Ec 5 s. Add a red and white daymark.
Petit-Rocher Breakwater light	1339.2	47° 46' 55.2"N 065° 42' 29.7"W	Increase lantern intensity.
<b>Floating Aids</b>			
Petit-Rocher light buoy ES2	1339.5	47° 46' 55.2"N 065° 42' 08.7"W	Increase lantern intensity.

Initial publication date: Friday, April 28, 2023

[Comment submission deadline](#): Thursday, July 27, 2023

(G2023-018)

**\*612(P)/23 Great Bras D'Or, St. Andrews Channel and/et St. Anns Bay – Notice of Proposed Changes**

Reference chart: 4277

The Canadian Coast Guard proposes to permanently change the following aids to navigation:

Aid Name	LL #	Position	Proposed Changes
<b>Floating Aids</b>			
Carey Beach light and bell buoy Q1	797	46° 19' 06.7"N 060° 23' 13.1"W	Discontinue the bell.
Carey Beach light and bell buoy Q2	797.5	46° 19' 05.8"N 060° 23' 19.2"W	Increase lantern intensity. Discontinue the bell.
Black Rock Point light buoy Q3	798	46° 18' 52.4"N 060° 23' 26.2"W	Reposition buoy to the following position: 46° 18' 52.5" N 060° 23' 26.1" W. Change flash characteristics to: FI 0.5 s; Ec 3.5 s. Decrease lantern intensity. Reduce the size of the buoy.
Great Bras D'or Entrance Outer light buoy Q4	801	46° 18' 39.6"N 060° 23' 43.0"W	Decrease lantern intensity. Reduce the size of the buoy.
Gooseberry Beach light buoy Q7	802.1	46° 17' 54.0"N 060° 24' 18.4"W	Decrease lantern intensity.
Carey Point light buoy Q8	802.2	46° 17' 43.0"N 060° 24' 33.9"W	Increase lantern intensity.
Duncan Head light buoy Q11/1	805.5	46° 14' 40.9"N 060° 28' 51.7"W	Establish a port hand buoy equipped with a green lantern with flash characteristics: FI 0.3 s; Ec 0.7 s.
Seal Reefs light buoy Q12	805.8	46° 14' 04.2"N 060° 29' 20.2"W	Change flash characteristics to: FI 0.5 s; Ec 3.5 s.
Seal Reefs light buoy Q14	806	46° 13' 50.2"N 060° 29' 34.7"W	Reposition buoy to the following position: 46° 13' 52.1" N 060° 29' 34.1" W.

Initial publication date: Friday, June 30, 2023

[Comment submission deadline](#): Thursday, September 28, 2023

(G2023-019)

## Inland Waters

### Temporary Notices

#### **\*909(T)/14 Kingston Harbour and Approaches/et les approches – Dock Unserviceable**

Reference chart: 2017

The Kingston psychiatric hospital dock is unserviceable and out of bounds for use as dockage until further notice.

(NOTSHIP C2409/10)

#### **\*515(T)/16 Harbours on the East Shore of Lake Superior/Ports sur la rive est du lac Supérieur – Buoys Temporarily Discontinued**

Reference chart: 2315

The Canadian Coast Guard has temporarily discontinued the following aids to navigation: XT1, XT2, XT3, XT4, XT5, XT6, XT7, XT8, XT9, XT10, XT11, XT12.

(NOTSHIP C1045)

#### **\*814(T)/16 Main Duck Island to/à Scotch Bonnet Island – Partially Submerged Fixed Steel Barges**

Reference chart: 2060

There are 3 partially submerged fixed steel barges in North end of West Lake (43° 57' 02.3"N 077° 20' 12.8"W), which have been reported just below the water line.

Barges are marked with cautionary buoys.

(NOTSHIP C1641/14)

#### **\*1011(T)/16 Lake Ontario/Lac Ontario (Western Portion/Partie Ouest) – Silting Reported**

Reference chart: 2077

Silting reported in main entrance channel to Fifty Point Marina. Centre of channel depth reported to be 1.9 metres with shallower depths on the sides.

Mariners are requested to use caution in the area.

(NOTSHIP C2266/16)

#### **\*1218(T)/16 Hamilton Harbour – Silting Reported**

Reference chart: 2067

Silting reported along the North faces of Pier 11 and Pier 12:

Pier 11 North Face between positions 43° 16' 31"N 079° 50' 56"W and 43° 16' 29"N 079° 50' 49"W, and at position 43° 16' 28"N 079° 50' 42"W.

Pier 12 North Face between positions 43° 16' 27"N 079° 50' 39"W and 43° 16' 26"N 079° 50' 33"W.

Mariners are requested to use caution and reduce speed upon arrival and departure. Seaway draft will be affected when water level is less than 0.70 metres above chart datum in these areas.

(NOTSHIP C1831/13)

**\*1219(T)/16 Toronto to/à Hamilton – Construction Operations**

Reference chart: 2086

Construction operations taking place from November 14, 2016 until approximately 2026 at Lakeview Water Treatment Plant between Marie Curtis Park and Serson Creek. A variety of equipment will be used to expand the land mass along the shoreline. Landfill and 3 islands will be lit and marked.

(NOTSHIP C2533/16)

**\*108(T)/17 Harbours in Lake Erie/Havres dans le lac Érié – Unlit Buoys Temporarily Repositioned**

Reference chart: 2181

The following unlit spar buoys have been temporarily repositioned due to silting:

Aid Name	LL #	Temporary Changes
ES2	7169	Reposition to 42° 39' 10.0"N 081° 12' 32.0"W
ES3	7170	Reposition to 42° 39' 15.4"N 081° 12' 40.7"W
ES4	7171	Reposition to 42° 39' 16.8"N 081° 12' 37.7"W

The shallowest depth to 3.5M occurs between ES3 and ES4 with the deepest water off the red side of the channel. Mariners are requested to use caution in the area.

(B2017-003)

**\*309(T)/17 Pelee Passage to/à la Detroit River – Low Water Levels Reported**

Reference chart: 2123

Low water levels have been reported from the south end of the entrance to Sturgeon Creek Harbour northward.

Annette Winter  
Project and Divestiture Officer  
Small Craft Harbours  
Fisheries and Oceans Canada

Canada Centre for Inland Waters (CCIW)  
867 Lakeshore Road  
Burlington, ON L7S 1A1  
Telephone: (905) 315-5286  
Email: [annette.winter@dfp-mpo.gc.ca](mailto:annette.winter@dfp-mpo.gc.ca)

(NOTSHIP C58/13)

**\*1206(T)/17 Lake Rosseau and/et Lake Joseph – Unlit Buoy Temporary Established**

Reference chart: 6022

The following unlit buoy has been temporary established:

Aid Name	LL #	Position
P3/1	9089.1	45° 08' 09.0"N 079° 40' 36.0"W

(D2017-006)

**\*709(T)/18 Kingston Harbour and Approaches/et les approches – Information Regarding Mooring and Anchoring**

Reference: Notice 309(T)/14 is cancelled.

Reference chart: 2017

All mooring or anchoring within the public port of Kingston is prohibited outside of designated marina areas until further notice without authorization from the port official.

Inquiries are to be directed to Transport Canada at (416) 952-0475.

**\*710(T)/20 Murray Canal to Healey Falls Locks / Murray Canal aux Écluses de Healey Falls – Construction Operations**

Reference chart: 2021

Construction operations, including diving operations, in progress as of July 6, 2020 between 1100 UTC and 0100 UTC at the mouth of the Trent River south of Dundas Street bridge in Trenton. The site is marked with red, green and white markers. Tug and barge on site, lit at night.

Vessels are advised to use caution when transiting the area and to keep clear of construction operations. Call 416-729-8830 for further details.

(NW-C-1012-20)

**\*1012(T)/20 Kingston Harbour and Approaches/et les approches – Construction Operations**

Reference chart: 2017

Wharf construction is taking place daily from 1100 UTC to 2300 UTC at the Kingston-Wolfe Island ferry terminal. The ferry remains operational. Vessels are not permitted to dock on the south side. The construction area is marked and lit.

(NW-C-1786-20)

**\*1210(T)/20 Demarcation Bay to/à Philips Bay – Mobile Offshore Drilling Unit Temporarily Established**

Reference: Notice 616(T)/07 is cancelled.

Reference chart: 7661

The unmanned mobile offshore drilling unit “SDC” continues to be temporarily established at 69° 24.71'N 138° 53.76'W. The structure is 202.4 metres long and 53 metres wide.

For information, contact Captain Connelly at 1-250-598-4513 or 1-250-744-9818 or e-mail at [doncon@islandnet.com](mailto:doncon@islandnet.com) or [dcmarine@shaw.ca](mailto:dcmarine@shaw.ca).

**\*112(T)/21 Upper Gap to/à Telegraph Narrows – Construction Operations**

Reference chart: 2006

Construction operations are currently underway on the Bay of Quinte Skyway Bridge.

During these operations, lit barges are on site and the bridge clearance is 19 metres.

(NW-C-2834-19)

**\*413(T)/21 Kingston Harbour and Approaches/et les approches – Aid to Navigation  
Temporarily Unlit**

Reference chart: 2017

The following aid to navigation is temporarily unlit:

Marysville Wharf light (LL 399.3): 44° 11' 42.4"N 076° 26' 27.3"W

(NW-C-1802-20)

**\*810(T)/21 Fort Frances to/à Hostess Island and/et Sandpoint Island – Aids to Navigation  
Temporarily Discontinued**

Reference chart: 6108

The following aids to navigation are temporarily discontinued:

Aid Name	LL #	Position
Noden Causeway East	1465	48° 39' 08.5"N 093° 18' 47.6"W
Noden Causeway West	1466	48° 39' 08.5"N 093° 18' 49.1"W

(D2021-026T, 027T)

**\*907(T)/21 Lac des Deux Montagnes – Missing Unlit Buoy**

Reference chart: 1510

The following unlit buoy is currently missing and will not be replaced before the 2022 navigation season:

Aid Name	LL #	Position
Chenal Saint-Placide buoy HJ17	6251.68	45° 31' 20.7"N 074° 12' 25.1"W

(NW-Q-1526-20)

**\*107(T)/22 Canal de la Rive Sud – Waterways Information**

Reference chart: 1429

Inspection work taking place under the Champlain bridge Monday to Friday from 1000 UTC until 1900 UTC. Tug "Intense" and barge are on site and will be lit and marked at night. Tug "Intense" monitoring VHF channel 79.

(NW-Q-1179-20)

**\*108(T)/22 Lower Gap to/à Adolphus Reach – Construction Operations Frontenac II Ferry  
Dock**

Reference chart: 2018

Construction operations are taking place daily during daylight hours at the Millhaven and Stella ferry docks. Temporary docks will be installed in the vicinity of the ferry docks. Docks will be marked with buoys and lit with amber lights.

(NW-C-2916-17)

**\*413(T)/22 Detroit River – Waterway Information: Bridge Construction**

Reference chart: 14853 (U.S.)

Bridge construction operations taking place in an area bounded by:

42° 17.200'N 083° 05.633'W

42° 17.183'N 083° 05.600'W

42° 17.067'N 083° 05.667'W

42° 17.000'N 083° 05.717'W

42° 17.017'N 083° 05.750'W

42° 17.100'N 083° 05.667'W

Unauthorized entry prohibited.

(NW-C-0151-22)

**\*614(T)/22 Canal de la Rive Sud – Bridge Repair Work**

Reference chart: 1429

Repair work in progress at the Honoré-Mercier Bridge (upstream) between Lasalle and Kahnawake. Bridge deck installed under the bridge span.

(NW-Q-1810-19)

**\*615(T)/22 Canal de la Rive Sud – Bridge Demolition**

Reference chart: 1429

Demolition work on the old Champlain Bridge in progress. Tugs, workboats, and barges on site.

(NW-Q-0204-21)

**\*616(T)/22 Canal de la Rive Sud – Federal Wharf Permanently Closed to Navigation**

Reference chart: 1429

The Lachine Port de Plaisance Marina is permanently closed. Services are no longer available to all pleasure crafts. Access to the navigational channel and canal is not affected.

Mooring prohibited.

(NW-Q-0356-22)

**\*617(T)/22 Lac Saint-Louis – Aids to Navigation Temporarily Established**

Reference chart: 1430

Six yellow lighted buoys marking a 400 metres breakwater awash temporarily established at the following coordinates:

45° 20' 44.5"N 073° 50' 32.9"W

45° 21' 00.3"N 073° 50' 11.6"W

45° 20' 47.7"N 073° 50' 29.4"W

45° 21' 05.4"N 073° 50' 07.6"W

45° 20' 50.0"N 073° 50' 24.1"W

45° 21' 11.8"N 073° 50' 04.6"W

(NW-Q-0579-22)

**\*618(T)/22 Point Clark to à Southampton – Aids to Navigation Established**

Reference: Notice 1212(T)/21 is cancelled.

Reference chart: 2291

Twenty-two sub-surface moorings have been removed and replaced by spar buoys at the following coordinates:

44° 13.912'N 081° 37.060'W	44° 22.719'N 081° 32.404'W
44° 13.970'N 081° 37.379'W	44° 22.933'N 081° 33.992'W
44° 13.981'N 081° 38.188'W	44° 23.512'N 081° 31.893'W
44° 15.862'N 081° 36.683'W	44° 23.953'N 081° 32.850'W
44° 15.894'N 081° 37.028'W	44° 25.270'N 081° 29.521'W
44° 15.885'N 081° 37.468'W	44° 25.576'N 081° 30.070'W
44° 19.834'N 081° 36.316'W	44° 26.041'N 081° 30.817'W
44° 19.867'N 081° 36.618'W	44° 33.449'N 081° 19.640'W
44° 21.668'N 081° 34.609'W	44° 33.525'N 081° 19.847'W
44° 22.055'N 081° 34.987'W	44° 34.184'N 081° 21.275'W

(NW-C-0708-22)

**\*109(T)/23 Port Hope Harbour – Dredging Operations**

Reference: Notice 809(T)/18 is cancelled.

Reference chart: 2053

Dredging and wall repair operations in Port Hope Harbour. Entrance to the western basin is blocked. Caution.

**\*415(T)/23 Toronto Harbour – Marine Works - Overhead Construction**

Reference chart: 2085

Position : 43° 37' 44.3"N 079° 25' 04.3"W

Overhead construction taking place in the North Marina of Ontario Place between West Island and East Island. Waterway closed to marine traffic.

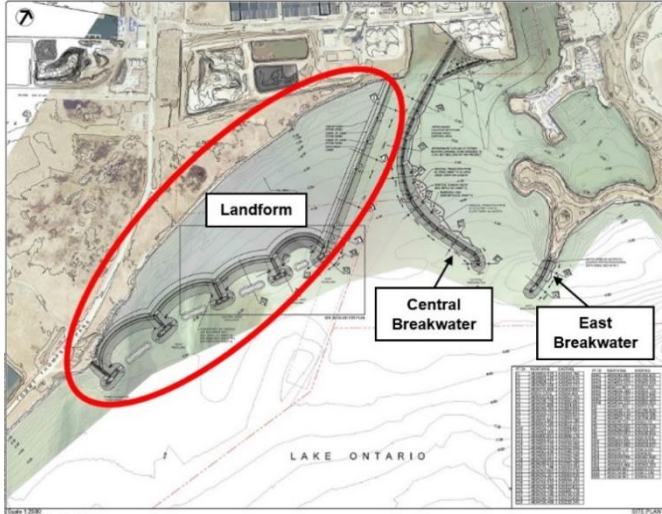
(NW-C-0064-23)



**\*512(T)/23 Toronto Harbour – Construction Operations**

Reference chart: 2085

Construction is taking place at Ashbridge's Bay and consists of the construction of two breakwaters and of a landform. A variety of equipment are being used, including tug boats and barges. Temporary aids to navigation are on site during construction. The operations are scheduled to take at the following positions:



**Breakwater construction operations**

43° 39' 20.7"N 079° 18' 48.1"W

Phase 1: Completed

Phase 2: 2021-04-01 through 2024-12-31

Phase 3: 2021-04-01 through 2024-12-31

**Landform construction operations**

43° 39' 01.4"N 079° 19' 01.9"W

Implementation of the shoreline infill area is expected to take approximately five years.

Mariners are requested to keep out of the construction zone.

**\*613(T)/23 Ottawa to à Smiths Falls – Marine Works – Bridge Repair**

Reference chart: 1512, 1515

Repairs work on the pillars of the MacDonal Cartier Bridge in progress. Scaffolding barge on site. Cautionary buoys upstream and downstream of the bridge. Minimum wake.

(NW-C-1882-21)

---

## **Preliminary Notices**

---

### **Central Region**

#### Comment Submission

Comments on proposed changes in preliminary (P) notices are solicited from mariners and other interested parties within three months of the initial publication date. Following this date, the notices will be cancelled. Any objections raised must state the facts on which they are based and should include supporting information on safety, commerce and public benefit.

No notices applicable for this edition.

Comments should be directed to the following:

Superintendent, Mathieu Roy  
Aids to Navigation & Waterways  
Canadian Coast Guard, Central Region  
1550 D'Estimauville Avenue  
Québec, QC G1J 5E9  
Telephone: (418) 648-7450  
Email: [mathieu.roy@dfo-mpo.gc.ca](mailto:mathieu.roy@dfo-mpo.gc.ca)

### **Western Region**

#### Comment Submission

Comments on proposed changes in preliminary (P) notices are solicited from mariners and other interested parties within three months of the initial publication date. Following this date, the notices will be cancelled. Any objections raised must state the facts on which they are based and should include supporting information on safety, commerce and public benefit.

No notices applicable for this edition.

Comments should be directed to the following:

A/Superintendent, Marc Jourdenais  
Aids to Navigation & Waterways  
Canadian Coast Guard, Western Region  
25 Huron Street  
Victoria, BC V8V 4V9  
Telephone: (250) 480-2602  
Fax: (250) 480-2702  
Email: [marc.jourdenais@dfo-mpo.gc.ca](mailto:marc.jourdenais@dfo-mpo.gc.ca)

## Pacific Coast

### Temporary Notices

No notices applicable for this edition.

### Preliminary Notices

#### Western Region

##### Comment Submission

Comments on proposed changes in preliminary (P) notices are solicited from mariners and other interested parties within three months of the initial publication date. Following this date, the notices will be cancelled. Any objections raised must state the facts on which they are based and should include supporting information on safety, commerce and public benefit.

Comments should be directed to the following:

A/Superintendent, Marc Jourdenais  
Aids to Navigation & Waterways  
Canadian Coast Guard, Western Region  
25 Huron Street  
Victoria, BC V8V 4V9  
Telephone: (250) 480-2602  
Fax: (250) 480-2702  
Email: [marc.jourdenais@dfo-mpo.gc.ca](mailto:marc.jourdenais@dfo-mpo.gc.ca)

No notices applicable for this edition.

## Other (T) & (P) Notices

### Temporary Notices

#### **\*1105(T)/15 Canada – Safety of Offshore Exploration and Exploitation Vessels**

Reference: Notice 410(T)/2007 is cancelled.

2015 Annual Edition of Notices to Mariners, Notice No. 20, pages A20-1 to A20-4.

Mariners are advised that offshore exploration and exploitation vessels may be conducting drilling operations in the following areas:

Gulf of St. Lawrence

NIL

Mainland NWT

NIL

Mackenzie Delta NWT/Beaufort Sea

NIL

Arctic Islands of the NWT/Arctic Islands of Nunavut

NIL

Eastern Arctic Offshore

NIL

Davis Strait

NIL

**NOTE:** Mariners are advised to obtain up-to-date position reports on drilling vessels and production installations before entering an area of exploration and exploitation. This information is available by contacting, as appropriate, ECAREG CANADA, NORDREG CANADA or CVTS OFFSHORE via any Marine Communications and Traffic Services Centre (MCTS).

(NOTSHIP M2215/15) (NEB)

#### **\*111(T)/23 Canadian Coast Guard – Automatic Identification System (AIS)**

Reference: Notice \*208(T)/21 is cancelled.

##### **AIS Aids to Navigation (AtoNs)**

Mariners are advised that the Canadian Coast Guard (CCG) is continuing to conduct supervised test beds of AIS AtoNs, with the objective of bringing AIS AtoNs to Full Operational Capability (FOC). Specific information on AIS AtoN test bed sites can be found on the CCG e-Navigation Maritime Information Portal at <https://e-navigation.canada.ca/topics/aids/docs/ais-aton/locations-en>.

Although AIS was originally developed as a collision avoidance tool for vessels, it also allows for the broadcasting of other types of data, such as the AIS AtoN “Message 21” (AIS AtoN Report).

Ships need to be equipped with standard shipborne AIS equipment for the display of AIS messages. The IMO mandatory carriage requirement for the Class “A” AIS display is the Minimum Keyboard Display (MKD), however, the display and use of the AtoN information may require additional hardware and/or software such as an AIS-connected Electronic Chart Display and Information System (ECDIS), Electronic Chart System (ECS), Radar or Portable Pilot Unit (PPU).

As the AIS information available to mariners will be dependent on their display system and its compliance with the latest IMO and IALA standards, some transmitted information may not be displayed or may have a different symbol. Mariners are encouraged to install and upgrade systems that provide AIS overlay on ECDIS, ECS and/or Radar. Mariners should be familiar with the display settings on their vessel's shipborne equipment.

All geographical positions (latitude and longitude) are based on the WGS 84 datum; time is displayed in Coordinated Universal Time (UTC).

CCG is making every effort to broadcast quality information; however, as with any navigational tool, mariners should not rely on this information as their sole means of navigation.

Mariners are advised to consult the CCG e-Navigation web page on AIS AtoN, accessible at <https://e-navigation.canada.ca/topics/aids/docs/ais-aton/index-en> for pertinent information, including examples of AIS AtoN display and symbology.

Individual NAVWARNs and/or NOTMARs are rarely issued for AIS AtoN trials.

Mariners are requested to provide feedback on the AIS AtoN test beds to the CCG e-Navigation Team at [ccg.enav.gcc@dfo-mpo.gc.ca](mailto:ccg.enav.gcc@dfo-mpo.gc.ca). In addition, mariners who wish to participate in CCG's questionnaire on AIS AtoN are invited to access it at <https://e-navigation.canada.ca/docs/surveys/asm-aton-en>. The collected results will guide the CCG in further developing this information service.

---

## **Preliminary Notices**

---

No notices applicable for this edition.